

Mississippi Gulf Coast Metropolitan Planning Organization

Transportation Improvement Program

FY 2012-2015

March 2013

Mississippi Gulf Coast Metropolitan Planning Organization (MPO)

The MPO is a federally mandated planning body responsible for transportation planning in the Mississippi Gulf Coast urbanized areas. The Gulf Regional Planning Commission (GRPC) serves as the MPO for the Mississippi Gulf Coast, coordinating transportation programs for all jurisdictions within the urbanized areas of Hancock, Harrison, and Jackson Counties. It is the lead agency responsible for developing and administering plans and programs to maintain eligibility and receive federal funds for the transportation systems in the Mississippi Gulf Coast area. The primary mission of the MPO is to develop and maintain a transportation planning process that is compliant with federal and state requirements, and supports the development and enhancement of sustainable multimodal facilities, programs and systems in the Mississippi Gulf Coast area. The Transportation Improvement Program (TIP) is one of the most important products of the MPO's planning process.

What is the TIP?

The Transportation Improvement Program (TIP) is a financially constrained four-year program for addressing short-term transportation priorities that are consistent with the area's long-range transportation plan (LRP). The TIP allocates the limited transportation resources among the various capital and operating needs of the area, based on locally developed priorities.

The TIP:

- Covers a minimum four-year period of investment
- Is an agreed upon list of priority projects for the region
- Is updated every two years
- May be amended every 6 months
- Is realistic in terms of available funding
- Is approved by the MPO and the governor
- Will be financially constrained
- Is incorporated into the Statewide Transportation Improvement Program

What role does the MPO play?

The TIP is developed and approved by the MPO and is included, without modification, in the Statewide Transportation Improvement Program (STIP) following approval by the Governor. The TIP can be modified at any time subject to approval of the MPO technical and policy committees.

How is the TIP funded?

Federal funding made available through the Surface Transportation Program (STP) is transferred first to the Mississippi Department of Transportation (MDOT), and then allocated to the MPO in a population-based formula. The funds are allocated through the MPO to local public agencies for eligible transportation improvement projects.

What roads are eligible on the Mississippi Gulf Coast?

Any functionally classified road within the urbanized area is eligible for Federal funding.

What are the funding requirements?

- Safety projects may be 100% federally funded but may not exceed 10% of the annual STP allocation
- Other projects are eligible for 80% federal funding

Eligible projects Include:

Projects that improve traffic flow, reduce congestion, enhance safety, reduce vehicle idling, reduce vehicle miles traveled, provide access to public transit, and improve the modal options and intermodal connectivity for people and goods.

- New signals, signal upgrades, signal systems
- Turn lanes, intersection geometry improvements
- Access management
- Reconstruction
- Construction of additional lanes or new facilities
- Bicycle and pedestrian facilities
- Facilities for park and ride programs
- Public transit programs and facilities

TIP development process

- TIP is updated every 2-years and may be amended every 6-months
- Submittal of project application
- Resolution from governing Board or Council for commitment of local match
- GRPC recommendation of projects to be incorporated into the TIP based on a project evaluation process that reflects the MPO's objectives
- Public comment period for draft TIP
- Technical Coordinating Committee (TCC) recommendation of the TIP
- Transportation Policy Committee (TPC) adoption of the TIP

Project evaluation process

- Projects will be ranked by type of improvement, deficiencies addressed and other MPO goals satisfied
- Level of congestion and safety deficiency will be assessed
- Cost, regional significance, project match, environmental justice impacts, etc. will be considered
- Project readiness will positively impact ranking
- Traffic operations projects will be highly ranked
- Projects that incorporate transit, pedestrian and/or bicycle facilities will receive additional points

Funding

Federal funding for projects in the TIP is provided through the Surface Transportation Program (STP) and is administered through the Federal Highway Administration (FHWA) and Federal Transit Administration (FTA). These funds are apportioned to each state's urbanized area through the Metropolitan Planning Organization (MPO). A formula is developed to apportion these funds to each state based on that state's urbanized area population as a ratio of the nation's total urbanized area population.

With the exception of safety projects and some projects funded through congressional earmarks, which may receive 100% federal funding, TIP projects are generally funded using an 80% federal/20% local-match ratio. For a project to be considered for inclusion in the TIP, a commitment from the sponsoring agency to provide the required local matching funds is required.

For more information:

Download the MPO's TIP Handbook at

[http://www.grpc.com/PDF/TIP%20Handbook\(2011\).pdf](http://www.grpc.com/PDF/TIP%20Handbook(2011).pdf).

**Mississippi Gulf Coast MPO
Transportation Improvement Program (TIP)
FY 2012-2015**

Route/Category:	Pass Road		
Termini:	Eisenhower Drive to Iberville Drive		
Improvement Type:	Intersection Improvements	Responsible Agency:	City of Biloxi
Project Length:	N/A	County:	Harrison
Project Description:			

Fiscal Year	Fund Source	Phase	Federal Funds	Local Funds	Total Funds
Complete		ENV			
Complete		DESIGN			
Complete		ROW	\$0	\$75,000	\$75,000
2012	STP	CON	\$1,500,000	\$375,000	\$1,875,000

Action History	Amend Adjust	Date	Remarks
Project added to TIP	Amend		
Funding Increase	Amend	3/11/2004	STP increase from \$2,174,600 to \$3,112,900

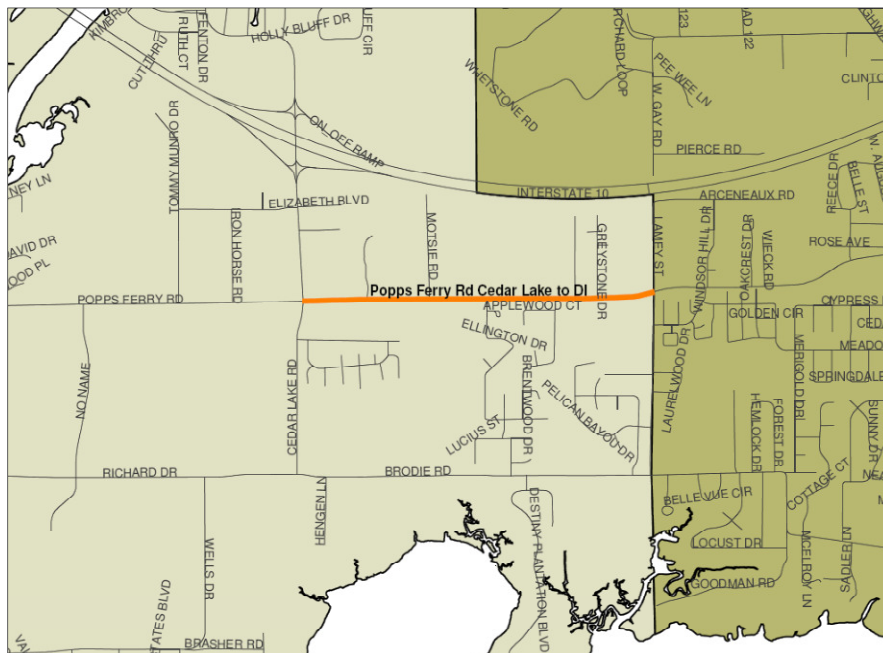


**Mississippi Gulf Coast MPO
Transportation Improvement Program (TIP)
FY 2012-2015**

Route/Category:	Popps Ferry Road (Phase IV)		
Termini:	Cedar Lake Road to D'Iberville		
Improvement Type:	Add Lanes	Responsible Agency:	City of Biloxi
Project Length:	1.0 mile	County:	Harrison
Project Description:			

Fiscal Year	Fund Source	Phase	Federal Funds	Local Funds	Total Funds
Complete		ENV	\$0	\$75,000	\$75,000
Complete		DESIGN	\$0	\$325,000	\$325,000
Complete		ROW	\$0	\$900,000	\$900,000
2013	STP	CON	\$2,204,800	\$551,200	\$2,756,000

Action History	Amend Adjust	Date	Remarks
Project added to TIP	Amend		

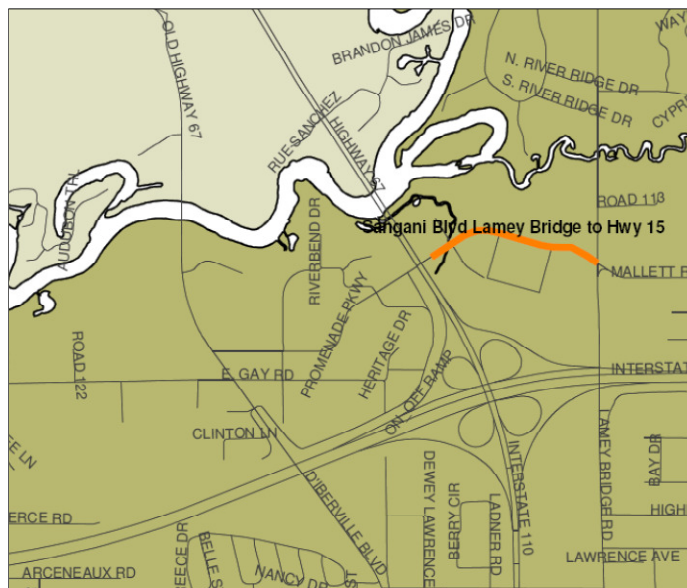


**Mississippi Gulf Coast MPO
Transportation Improvement Program (TIP)
FY 2012-2015**

Route/Category:	Sangani Boulevard		
Termini:	Hwy 15 to Lamey Bridge Road		
Improvement Type:	Capacity Improvements/Sidewalks	Responsible Agency:	City of D'Iberville
Project Length:	.5 miles	County:	Harrison County
Project Description:			

Fiscal Year	Fund Source	Phase	Federal Funds	Local Funds	Total Funds
Complete		ENV			
Complete		DESIGN	\$0	\$195,000	\$195,000
Complete		ROW	\$0	\$0	\$0
2013	STP	CON	\$2,400,000	\$480,000	\$2,880,000

Action History	Amend Adjust	Date	Remarks
Project Addition	Amend	5/31/2007	\$2,000,000 STP
Funding Increase	Amend	5/27/2010	Add \$1,360,000 STP
Project Addition	Amend	12/2/2008	\$1,300,000 STP
Change FY	Mod	10/1/2012	Move from FY 2012 to FY 2013

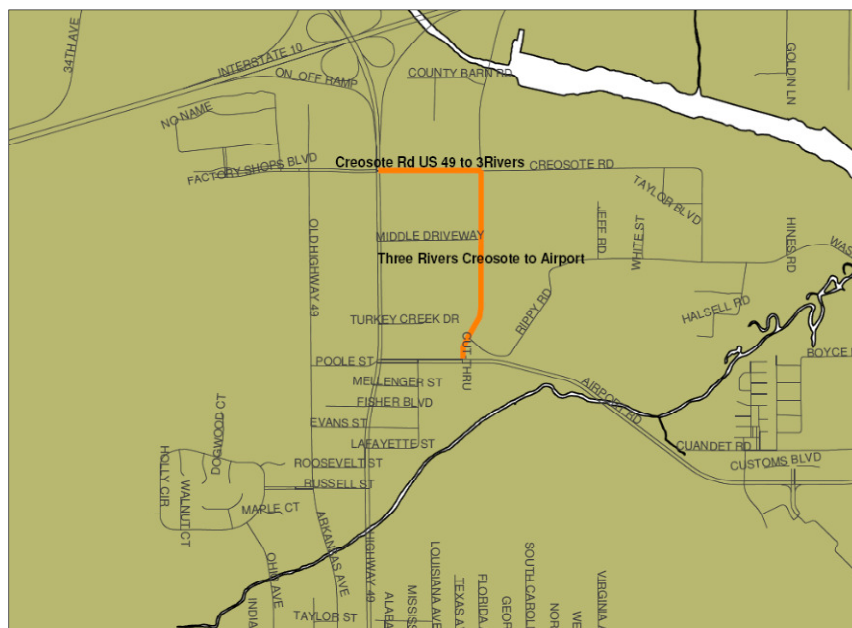


**Mississippi Gulf Coast MPO
Transportation Improvement Program (TIP)
FY 2012-2015**

Route/Category:	Creosote Road & Three Rivers Road		
Termini:	US 49 to Airport Road		
Improvement Type:	Capacity	Responsible Agency:	City of Gulfport
Project Length:	.99 miles	County:	Harrison County
Project Description:	Add Lanes		

Fiscal Year	Fund Source	Phase	Federal Funds	Local Funds	Total Funds
Complete		ENV		\$165,000	\$165,000
Complete		DESIGN		\$165,000	\$165,000
Complete		ROW		\$175,000	\$175,000
2013	STP	CON	\$3,943,146	\$868,750	\$4,343,750

Action History	Amend Adjust	Date	Remarks
Funding Increase	Amend	5/31/2007	From \$1,605,192 STP to \$2,641,192 STP
Funding Increase	Amend	11/30/11	\$2,641,192 to \$3,475,000
Funding Increase	Adjust	3/2012	\$3,475,000 to \$3,943,146
Change FY	Mod	10/1/2012	Move from FY 2012 to FY 2013

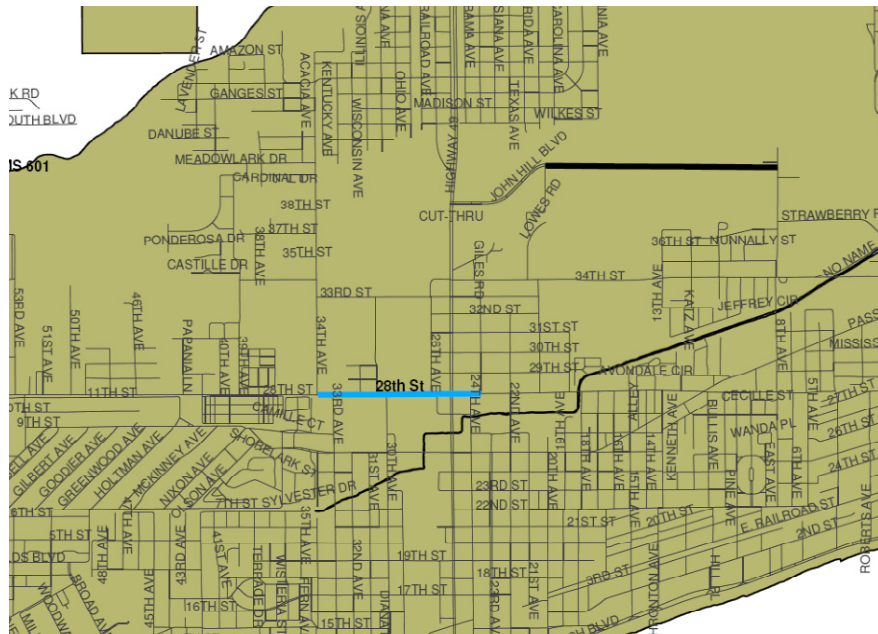


**Mississippi Gulf Coast MPO
Transportation Improvement Program (TIP)
FY 2012-2015**

Route/Category:	28 th Street		
Termini:	34 th Avenue to 23 rd Avenue		
Improvement Type:	Add lanes	Responsible Agency:	City of Gulfport
Project Length:	.7 miles	County:	Harrison County
Project Description:			

Fiscal Year	Fund Source	Phase	Federal Funds	Local Funds	Total Funds
Complete		ENV	\$0	\$150,000	\$150,000
Complete		DESIGN	\$0	\$150,000	\$150,000
Complete		ROW	\$0	\$500,000	\$500,000
2013	STP	CON	\$4,500,000	\$1,125,000	\$5,625,000

Action History	Amend Adjust	Date	Remarks
Project Addition	Amend		
Funding Increase	Amend	11/30/11	\$2,392,000 to \$4,500,000
Change FY	Mod	10/1/2012	Move from FY 2012 to FY 2013



**Mississippi Gulf Coast MPO
Transportation Improvement Program (TIP)
FY 2012-2015**

Route/Category:	Popp's Ferry Bridge		
Termini:	Length of Popp's Ferry Bridge		
Improvement Type:	Submarine Cable Installation	Responsible Agency:	City of Biloxi
Project Length:		County:	Harrison County
Project Description:			

Fiscal Year	Fund Source	Phase	Federal Funds	Local Funds	Total Funds
Complete		ENV			
Complete		DESIGN			
Complete		ROW			
2013	STP	CON	\$749,000	\$187,250	\$936,250

Action History	Amend Adjust	Date	Remarks
Project Addition	Amend	5/31/2007	\$560,000 STP
Change FY	Mod	10/1/2012	Move from FY 2012 to FY 2013
Increase Funding	Amend	3/28/2013	Increase from \$560,000 to \$749,000

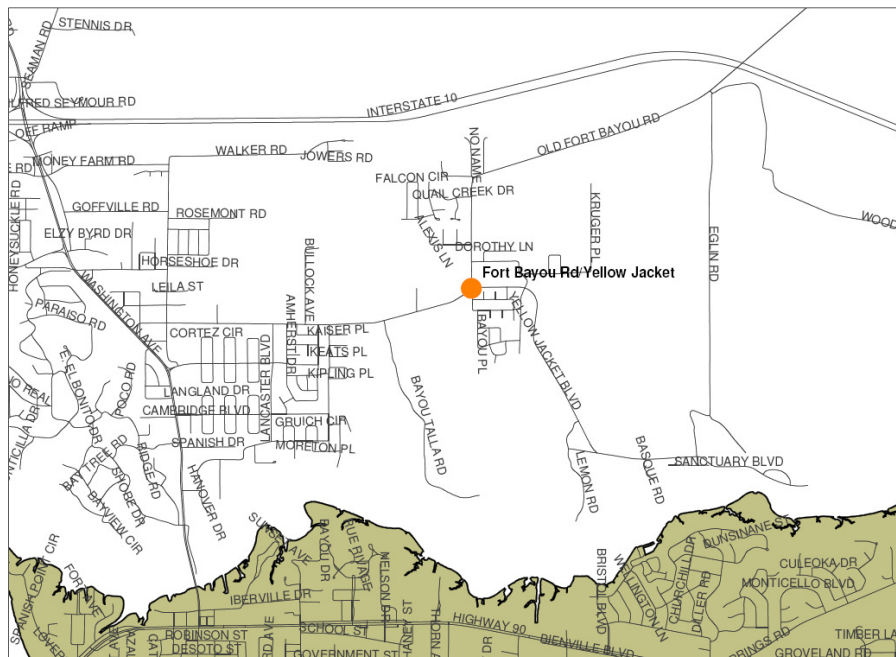


**Mississippi Gulf Coast MPO
Transportation Improvement Program (TIP)
FY 2012-2015**

Route/Category:	Old Fort Bayou Road		
Termini:	Yellow Jacket Road		
Improvement Type:	Intersection Improvement	Responsible Agency:	Jackson County
Project Length:		County:	Jackson County
Project Description:			

Fiscal Year	Fund Source	Phase	Federal Funds	Local Funds	Total Funds
2012		ENV	\$0	\$60,000	\$60,000
2012		DESIGN	\$0	\$150,000	\$150,000
2012		ROW	\$0	\$600,000	\$600,000
2014	STP	CON	\$1,780,844	\$619,156	\$2,400,000

Action History	Amend Adjust	Date	Remarks
Project Addition	Amend	5/31/2007	\$1,489,000 STP

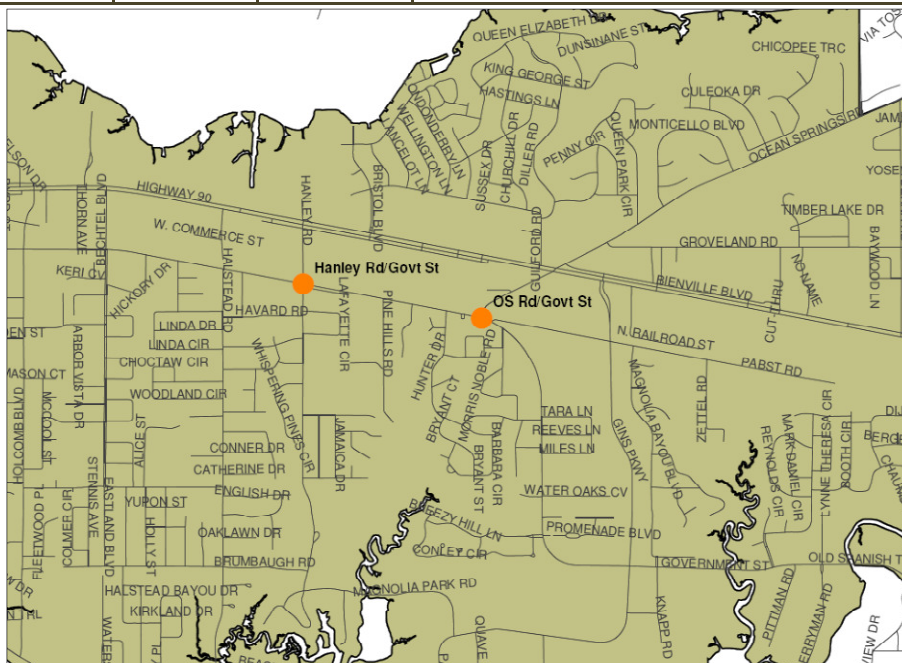


**Mississippi Gulf Coast MPO
Transportation Improvement Program (TIP)
FY 2012-2015**

Route/Category:	Government Street		
Termini:	Hanley Road to Ocean Springs Road		
Improvement Type:	Intersection Improvements	Responsible Agency:	City of Ocean Springs
Project Length:	1.2 miles	County:	Jackson County
Project Description:			

Fiscal Year	Fund Source	Phase	Federal Funds	Local Funds	Total Funds
Complete		ENV	\$0	\$50,000	\$50,000
Complete		DESIGN	\$0	\$50,000	\$50,000
Complete		ROW	\$0	\$200,000	\$200,000
2012	STP	CON	\$916,160	\$229,040	\$1,145,200

Action History	Amend Adjust	Date	Remarks
Project added to TIP	Amend		
Terminus Change	Amend	10/1/2010	Change the eastern terminus from "Pine Street" to "Hanley Road"

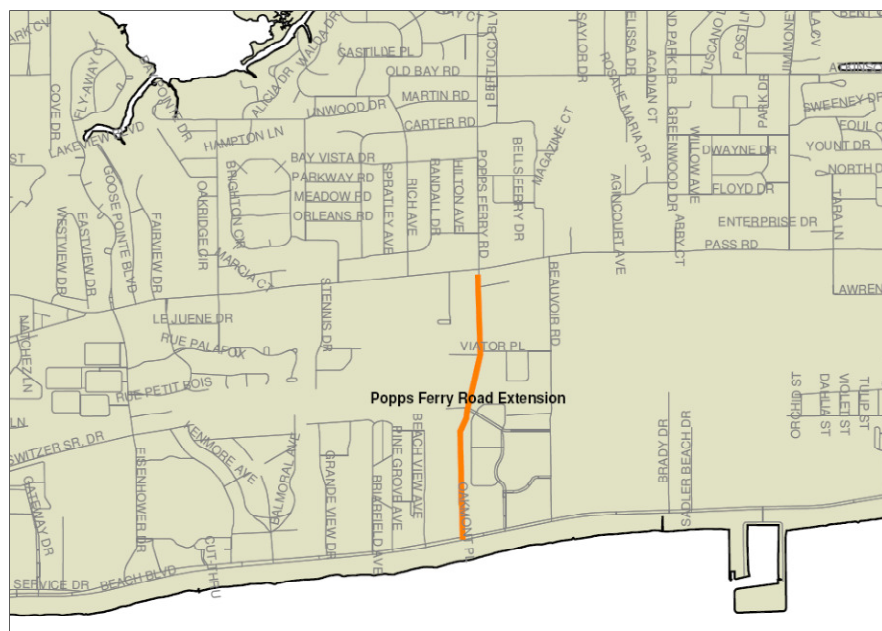


**Mississippi Gulf Coast MPO
Transportation Improvement Program (TIP)
FY 2012-2015**

Route/Category:	Popps Ferry Road Extension		
Termini:	Pass Road to US 90		
Improvement Type:	New and Reconstruction	Responsible Agency:	City of Biloxi
Project Length:	.75 miles	County:	Harrison County
Project Description:			

Fiscal Year	Fund Source	Phase	Federal Funds	Local Funds	Total Funds
2012	Earmark	ENV	\$550,000	\$137,500	\$687,500
2011	Earmark	DESIGN	\$400,000	\$100,000	\$500,000
2012	Earmark	ROW	\$4,560,000	\$1,140,000	\$5,700,000
2014	STP	CON	\$2,163,200	\$540,800	\$2,704,000
2014	Earmark	CON	\$890,000	\$4,406,000	\$5,296,000

Action History	Amend Adjust	Date	Remarks
Project Addition	Amend	11/29/2007	\$2,000,000 STP
Change Termini	Amend	5/2011	From "Coliseum to Pass Rd" to "Pass Rd to US 90"
Add Earmark	Amend	5/2011	ENV-\$550,000(federal) \$137,500(local)/DESIGN \$400,000(federal) \$100,000(local)/ROW \$4,560,000(federal) \$1,140,000(local)/CON \$890,000 (federal) \$4,406,000(local)

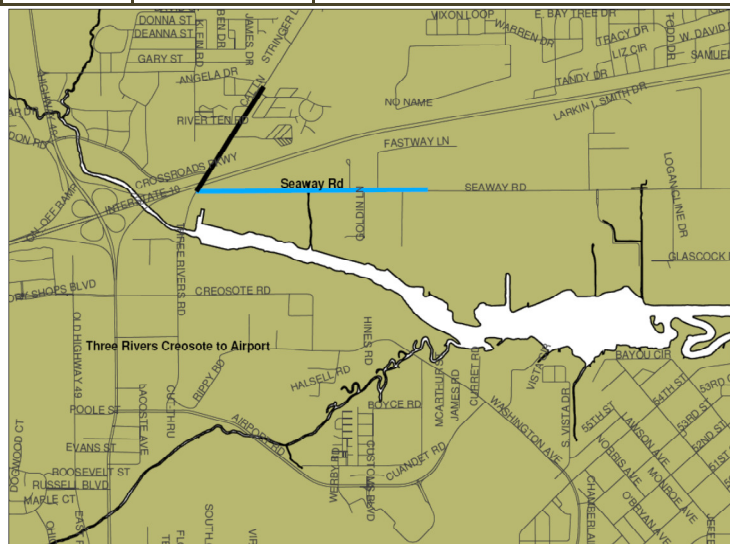


**Mississippi Gulf Coast MPO
Transportation Improvement Program (TIP)
FY 2012-2015**

Route/Category:	Seaway Road		
Termini:	Three Rivers Road to approximately 1 mile east		
Improvement Type:	Capacity improvements	Responsible Agency:	City of Gulfport
Project Length:	1 mile	County:	Harrison County
Project Description:	Add lanes		

Fiscal Year	Fund Source	Phase	Federal Funds	Local Funds	Total Funds
2011		ENV			
2011		DESIGN	\$0	\$380,000	\$380,000
2011		ROW			
2013	STP	CON	\$3,429,022	\$751,610	\$3,758,051

Action History	Amend Adjust	Date	Remarks
Funding Increase	Amend	11/29/2007	\$2,095,200 STP to \$3,095,200 STP
Termini Change	Amend	12/9/2010	Change to Three Rivers Rd. to appr. 1 mile east.
Funding Change	Amend	12/9/2010	From \$3,095,200 STP to \$2,516,314 STP
Funding Increase	Amend	11/30/11	\$2,516,314 to \$3,006,441
Change FY	Mod	10/1/2012	Move from FY 2012 to FY 2013
Funding Increase	Mod	10/1/2012	\$3,006,441(STP) to \$3,429,022(STP)



**Mississippi Gulf Coast MPO
Transportation Improvement Program (TIP)
FY 2012-2015**

Route/Category:	Main Street		
Termini:	Beach Boulevard to US 90		
Improvement Type:	Operations	Responsible Agency:	City of Bay St. Louis
Project Length:		County:	Hancock County
Project Description:	Lighting, pavement marking, emergency signal		

Fiscal Year	Fund Source	Phase	Federal Funds	Local Funds	Total Funds
2012		ENV			
2012		DESIGN			
2012		ROW			
2012	STP	CON	\$878,749	\$290,287	\$1,098,436

Action History	Amend Adjust	Date	Remarks
Project Addition	Amend	10/1/2010	Re submittal of project \$878,749 STP
Scope Change	Adjust	7/2011	Change from "reconstruction" to "Lighting, pavement marking, emergency signal".

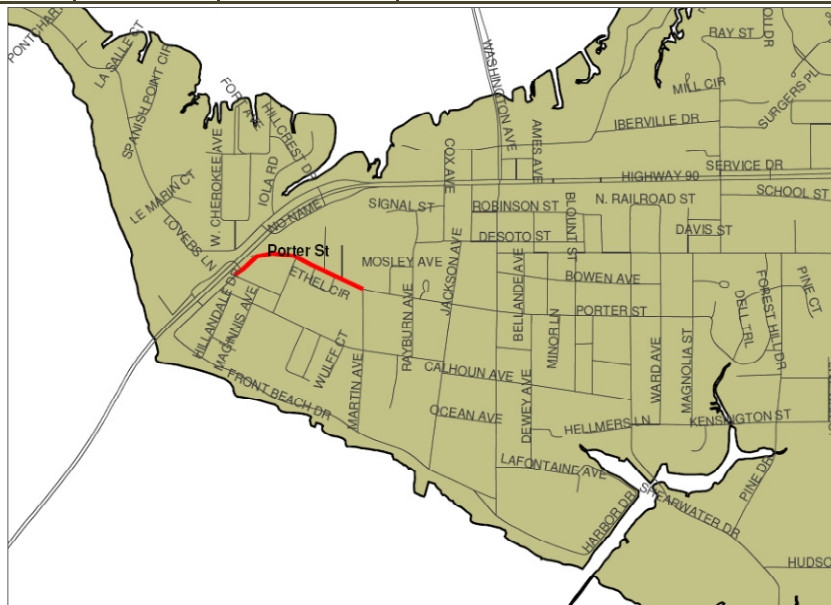


**Mississippi Gulf Coast MPO
Transportation Improvement Program (TIP)
FY 2012-2015**

Route/Category:	Porter Avenue		
Termini:	Martin Avenue to Howard Avenue		
Improvement Type:	Pedestrian	Responsible Agency:	City of Ocean Springs
Project Length:	.5 miles	County:	Jackson County
Project Description:	Sidewalks		

Fiscal Year	Fund Source	Phase	Federal Funds	Local Funds	Total Funds
2012		ENV			
2012		DESIGN			
2012		ROW			
2013	STP	CON	\$913,788	\$228,447	\$1,142,235

Action History	Amend Adjust	Date	Remarks
Project Addition	Amend	12/11/2008	\$324,000 STP
Funding Change	Adjust	5/2011	\$600,000 STP to \$690,000 STP
Funding Change	Amend	8/2011	\$690,000 STP to \$913,788 STP
Change FY	Mod	10/1/2012	Move from FY 2012 to FY 2013

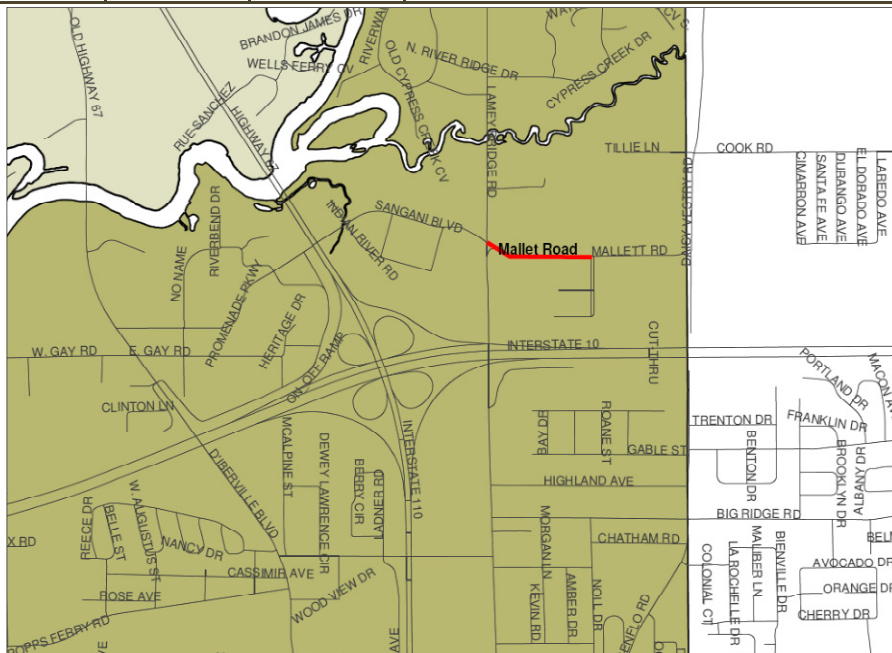


**Mississippi Gulf Coast MPO
Transportation Improvement Program (TIP)
FY 2012-2015**

Route/Category:	Mallet Road		
Termini:	Lamey Bridge Road to Cinema Drive		
Improvement Type:	Pedestrian	Responsible Agency:	City of D'Iberville
Project Length:	.93	County:	Jackson County
Project Description:	Sidewalks		

Fiscal Year	Fund Source	Phase	Federal Funds	Local Funds	Total Funds
2012		ENV			
2012		DESIGN			
2012		ROW			
2012	STP	CON	\$225,000	\$56,250	\$281,250

Action History	Amend Adjust	Date	Remarks
Project added to TIP	Amend		
Error adjust	Adjust	10/1/2010	Adjust error in federal funding from \$200,000 to \$225,000



**Mississippi Gulf Coast MPO
Transportation Improvement Program (TIP)
FY 2012-2015**

Route/Category:	Hwy 57		
Termini:	Old Spanish Trail to US 90		
Improvement Type:	Reconstruction, Pedestrian	Responsible Agency:	Jackson County
Project Length:	.5 miles	County:	Jackson County
Project Description:	Sidewalks		

Fiscal Year	Fund Source	Phase	Federal Funds	Local Funds	Total Funds
2012		ENV	\$0	150,000	\$150,000
2012		DESIGN	\$0	150,000	\$150,000
2012		ROW	\$0	120,000	\$120,000
2014	STP	CON	\$800,000	\$200,000	\$1,000,000

Action History	Amend Adjust	Date	Remarks
Project Addition	Amend	12/11/2008	\$800,000 STP

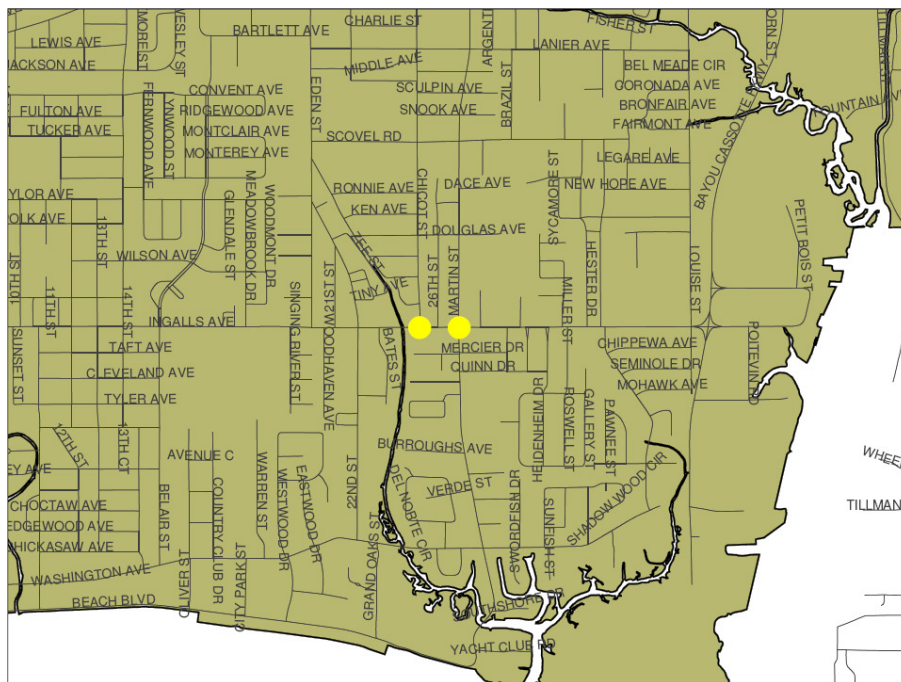


**Mississippi Gulf Coast MPO
Transportation Improvement Program (TIP)
FY 2012-2015**

Route/Category:	Ingalls Avenue		
Termini:	Chicot Road & Martin Street		
Improvement Type:	Intersection Improvements	Responsible Agency:	City of Pascagoula
Project Length:	N/A	County:	Jackson County
Project Description:			

Fiscal Year	Fund Source	Phase	Federal Funds	Local Funds	Total Funds
2012		ENV			
2012		DESIGN	\$0	\$45,000	\$45,000
2012		ROW			
2014	STP	CON	\$396,000	\$99,000	\$495,000

Action History	Amend Adjust	Date	Remarks
Project Addition	Amend	12/11/2008	\$396,000 STP

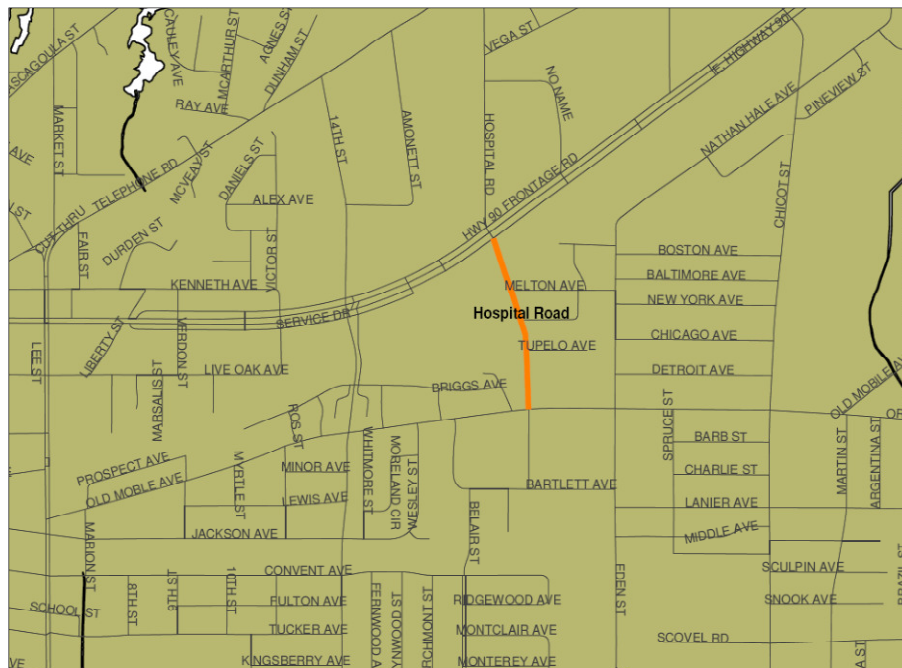


**Mississippi Gulf Coast MPO
Transportation Improvement Program (TIP)
FY 2012-2015**

Route/Category:	Hospital Road		
Termini:	Old Mobile Hwy to US 90		
Improvement Type:	Reconstruction	Responsible Agency:	City of Pascagoula
Project Length:	.5 miles	County:	Jackson County
Project Description:			

Fiscal Year	Fund Source	Phase	Federal Funds	Local Funds	Total Funds
2013		ENV			
2013		DESIGN	\$0	\$57,000	\$57,000
2013		ROW	\$0	\$120,000	\$120,000
2015		CON	\$494,400	\$123,600	\$618,000

Action History	Amend Adjust	Date	Remarks
Project Addition	Amend	12/11/2008	\$494,400 STP

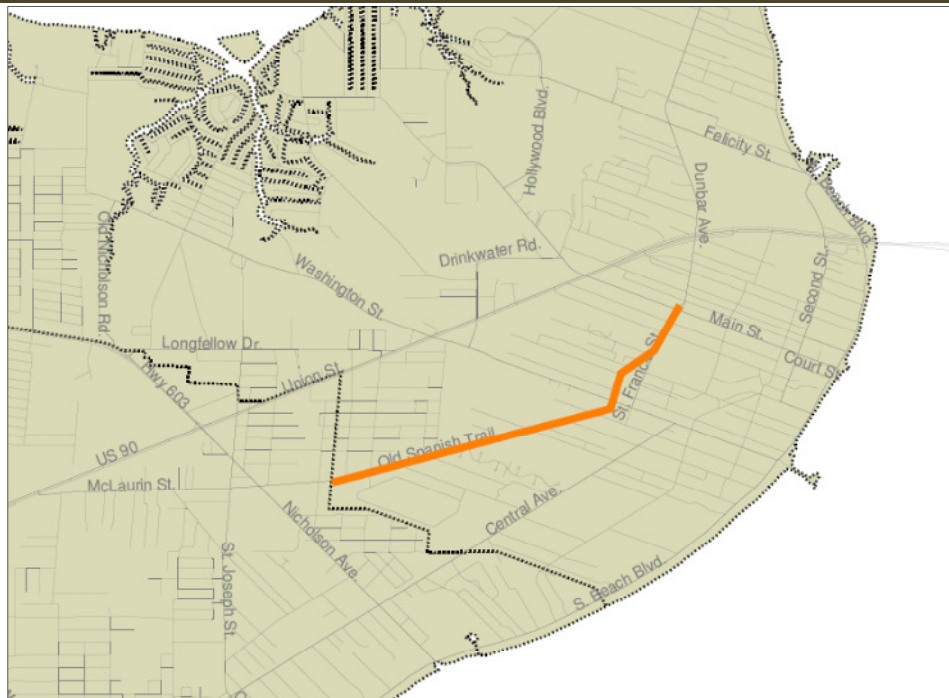


**Mississippi Gulf Coast MPO
Transportation Improvement Program (TIP)
FY 2012-2015**

Route/Category:	Old Spanish Trail		
Termini:	City Limits to Main St		
Improvement Type:	Pedestrian	Responsible Agency:	City of Bay St Louis
Project Length:		County:	Hancock County
Project Description:	Sidewalks		

Fiscal Year	Fund Source	Phase	Federal Funds	Local Funds	Total Funds
2012		ENV			
2012		DESIGN			
2012		ROW			
2013	STP	CON	\$743,762	\$185,940	\$929,702

Action History	Amend Adjust	Date	Remarks
Project Addition	Amend	12/9/2010	\$491,362 STP
Combine 2 Projects	Adjust	4/2012	Combine two Bay St Louis projects – (Old Spanish Trl/City Limits to Washington St \$491,362 STP) and (Old Spanish Trl/Washington St to Main St \$252,400 STP)

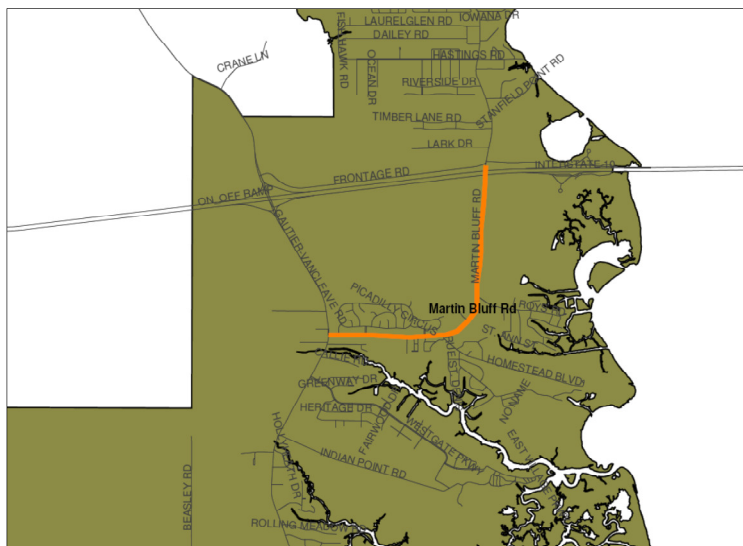


**Mississippi Gulf Coast MPO
Transportation Improvement Program (TIP)
FY 2012-2015**

Route/Category:	Martin Bluff Road		
Termini:	Gautier-Vancleave Road to Frontage Road		
Improvement Type:	Reconstruction	Responsible Agency:	City of Gautier
Project Length:	2.1 miles	County:	Jackson County
Project Description:			

Fiscal Year	Fund Source	Phase	Federal Funds	Local Funds	Total Funds
2013	Earmark	ENV DESIGN ROW CON	\$1,700,000	\$0	\$1,700,000
2013	STP	CON	\$936,000	\$234,000	\$1,171,000
2013	Earmark	CON	\$2,400,000	\$600,000	\$3,000,000

Action History	Amend Adjust	Date	Remarks
Project Addition	Amend	12/9/2010	\$936,000 STP
Funding Addition	Amend	12/9/2010	\$1,700,000 earmark
Adjust Year	Adjust	2/10/2011	Change Earmark from 2010 to 2011/ Change STP from 2011 to 2012
Change FY	Mod	10/1/2012	Move from FY 2012 to FY 2013

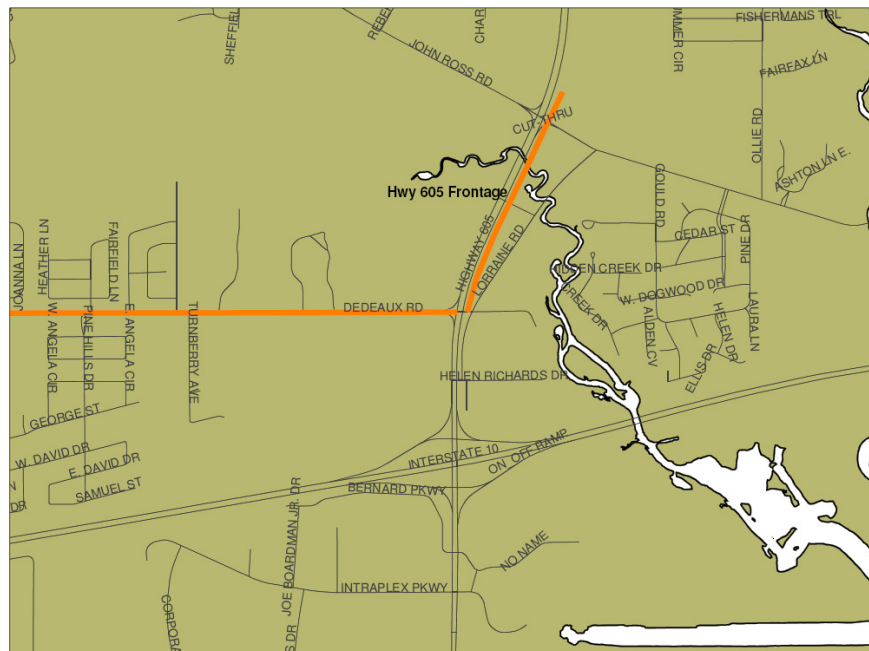


**Mississippi Gulf Coast MPO
Transportation Improvement Program (TIP)
FY 2012-2015**

Route/Category:	Hwy 605 Frontage Road		
Termini:	Lorraine Road to 2000' North – East Side		
Improvement Type:	Access Management	Responsible Agency:	Harrison County
Project Length:	2000 ft	County:	Harrison County
Project Description:			

Fiscal Year	Fund Source	Phase	Federal Funds	Local Funds	Total Funds
2012		ENV			
2012		DESIGN			
2012		ROW			
2014	STP	CON	\$726,800	\$281,700	\$1,008,500

Action History	Amend Adjust	Date	Remarks
Project Addition	Amend	12/9/2010	\$726,800 STP

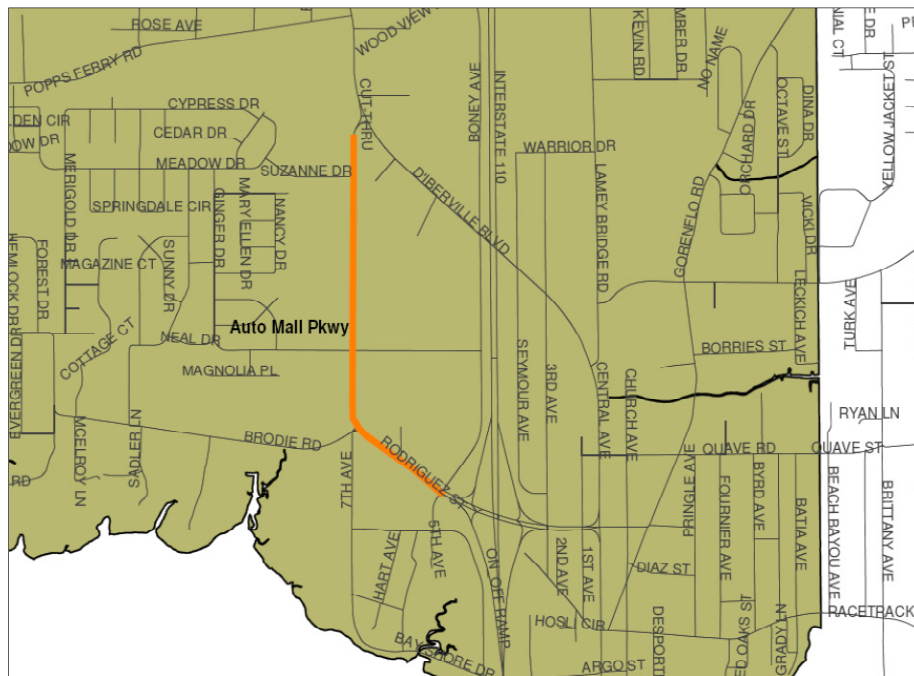


**Mississippi Gulf Coast MPO
Transportation Improvement Program (TIP)
FY 2012-2015**

Route/Category:	Automall Parkway & Rodriguez Street		
Termini:	D'Iberville Boulevard to I-110		
Improvement Type:	Reconstruction	Responsible Agency:	City of D'Iberville
Project Length:	.8 miles	County:	Harrison County
Project Description:			

Fiscal Year	Fund Source	Phase	Federal Funds	Local Funds	Total Funds
2013		ENV			
2013		DESIGN			
2013		ROW	\$0	\$0	\$0
2013	STP	CON	\$200,000	\$50,000	\$250,000

Action History	Amend Adjust	Date	Remarks
Project Addition	Amend	5/26/2005	
	Amend	12/9/2010	

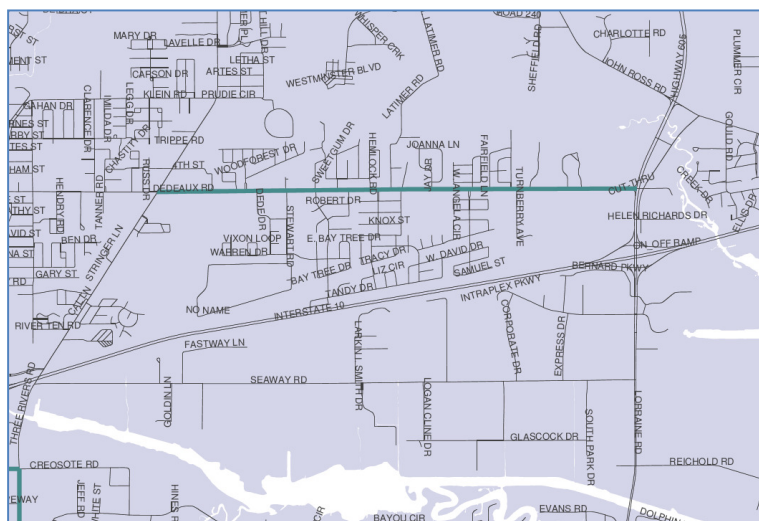


**Mississippi Gulf Coast MPO
Transportation Improvement Program (TIP)
FY 2012-2015**

Route/Category:	Deadeaux Road		
Termini:	Three Rivers Road to Hwy 605		
Improvement Type:	Capacity	Responsible Agency:	City of Gulfport
Project Length:	2.7 miles	County:	Harrison County
Project Description:	Add lanes		

Fiscal Year	Fund Source	Phase	Federal Funds	Local Funds	Total Funds
2012	Earmark	DESIGN	\$1,025,871	\$0	\$1,025,871
2012	Earmark	ROW	\$1,760,915	\$1,318,980	\$3,079,895
2013	Earmark	CON	\$8,000,000	\$2,000,000	\$10,000,000
2013	STP	CON	\$3,000,000	\$750,000	\$3,750,000

Action History	Amend Adjust	Date	Remarks
Funding Change	Adjust	8/30/2007	Move \$239,085 of the \$2,000,000 (earmark) for construction to PE phase.
Funding Change	Amend	8/2011	2011 Preliminary Engineering (PE) phase to project. \$1,025,871 (Federal Earmark)
Add Phase	Amend	8/2011	Add 2011 Preliminary Engineering (PE) phase to project. \$1,025,871 (Federal Earmark)
Add STP funding	Amend	11/30/11	Add \$3,000,000 STP



**Mississippi Gulf Coast MPO
Transportation Improvement Program (TIP)
FY 2012-2015**

Route/Category:	Ship Island Terminal Project		
Termini:	Bert Jones Yacht Basin		
Improvement Type:	Intermodal	Responsible Agency:	City of Gulfport
Project Length:		County:	Harrison County
Project Description:	A new elevated terminal building and pier where ferry boats will be docked for passenger boarding		

Fiscal Year	Fund Source	Phase	Federal Funds	Local Funds	Total Funds
		ENV			
		DESIGN			
2013	ARRA Ferry	CON	\$701,395	\$175,349	\$876,744
2013	Earmark	CON	\$496,750	\$124,199	\$620,949
2013	STP	CON	\$560,301	\$140,075	\$700,376

Action History	Amend Adjust	Date	Remarks
Project Addition	Amend	5/21/2009	ARRA Ferry Grant \$876,744
Add STP	Amend	11/30/11	Add \$560,301 STP
Change FY	Mod	10/1/2012	Move from FY 2012 to FY 2013

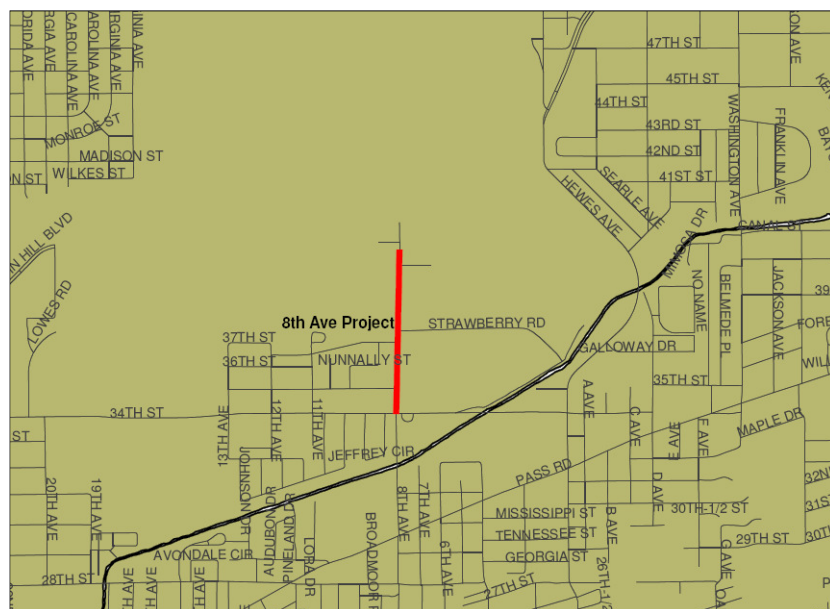


**Mississippi Gulf Coast MPO
Transportation Improvement Program (TIP)
FY 2012-2015**

Route/Category:	8 th Avenue Connector		
Termini:	Gulfport Biloxi International Airport to 34 th Street		
Improvement Type:	New	Responsible Agency:	Gpt-Blx Airport
Project Length:	.6 miles	County:	Harrison County
Project Description:			

Fiscal Year	Fund Source	Phase	Federal Funds	Local Funds	Total Funds
		ENV			
		DESIGN			
		ROW			
2012	STP (MDOT)	CON	\$587,051	\$146,763	\$733,814

Action History	Amend Adjust	Date	Remarks
Project Addition	Amend	3/19/2009	ICIP program. \$763,216
Change Fund Source	Adjust	10/1/2010	Change from "ICIP" funds to "STP" (MDOT) funds.
Adjust Error	Adjust	2/10/2011	Federal funds and local funds were mixed up
Change FY	Adjust	5/2011	Change from 2010 to 2011



**Mississippi Gulf Coast MPO
Transportation Improvement Program (TIP)
FY 2012-2015**

Route/Category:	Harrison County Multimodal Facility		
Termini:			
Improvement Type:	Modal	Responsible Agency:	CTA
Project Length:		County:	Harrison County
Project Description:	Construction of building		

Fiscal Year	Fund Source	Phase	Federal Funds	Local Funds	Total Funds
		ENV			
2012	Earmark	DESIGN	\$500,000	\$0	\$500,000
		ROW			
2012	Earmark	CON	\$13,850,000	\$0	\$13,850,000

Action History	Amend Adjust	Date	Remarks
Project Addition	Amend		

**Mississippi Gulf Coast MPO
Transportation Improvement Program (TIP)
FY 2012-2015**

Route/Category:	Airport Road and Airport Exit		
Termini:	Airport Road and Airport Exit Road		
Improvement Type:	Intersection	Responsible Agency:	Gpt-Blx Int'l Airport
Project Length:		County:	Harrison
Project Description:	Intersection improvements and lighting		

Fiscal Year	Fund Source	Phase	Federal Funds	Local Funds	Total Funds
		ENV			
		DESIGN			
		ROW			
2012	ICIP	CON	\$1,431,803	\$527,058	\$1,958,861

Action History	Amend Adjust	Date	Remarks
Project Addition	Amend		

**Mississippi Gulf Coast MPO
Transportation Improvement Program (TIP)
FY 2012-2015**

Route/Category:	Popps Ferry Road Bridge		
Termini:	Bay of Biloxi		
Improvement Type:	Replace Bridge	Responsible Agency:	City of Biloxi
Project Length:		County:	Harrison County
Project Description:	Replace Bridge		

Fiscal Year	Fund Source	Phase	Federal Funds	Local Funds	Total Funds
2013	Earmark/ STP	ENV/DES	\$4,000,000	\$1,000,000	\$5,000,000
		DESIGN			
		ROW			
2013		CON	\$8,000,000	\$2,000,000	\$10,000,000

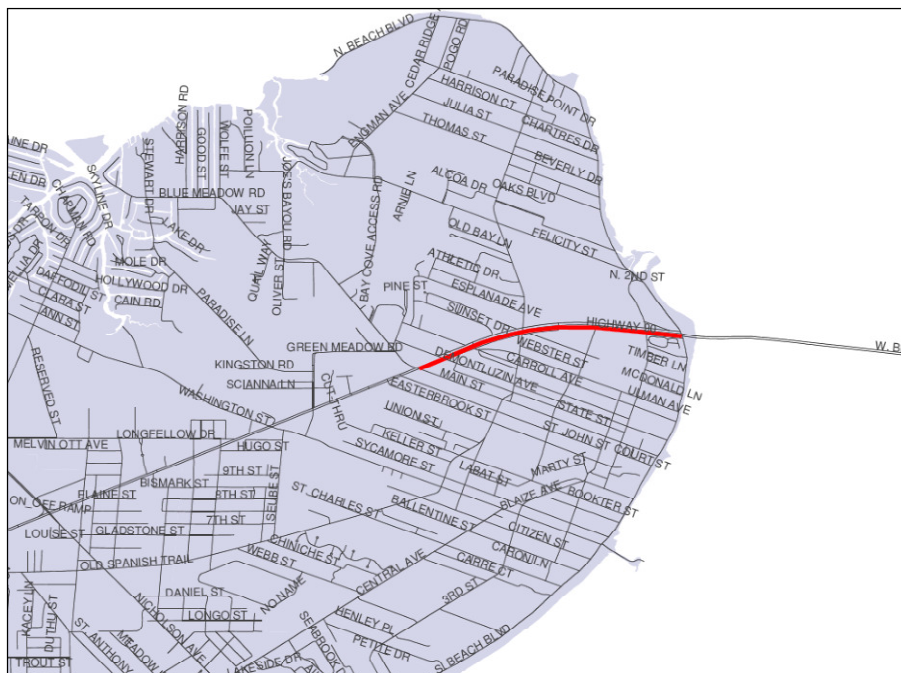
Action History	Amend Adjust	Date	Remarks
Project Addition	Amend		
Change FY	Mod	10/1/2012	Move from FY 2012 to FY 2013

FY 2012-2015

Route/Category:	US 90 Pedestrian Pathway		
Termini:	BSL Bridge to Main Street		
Improvement Type:	Pedestrian	Responsible Agency:	Bay St. Louis
Project Length:		County:	Hancock County
Project Description:	Pedestrian pathway along US 90		

Fiscal Year	Fund Source	Phase	Federal Funds	Local Funds	Total Funds
		ENV			
		DESIGN			
		ROW			
2013	STP	CON	\$164,800	\$41,200	\$206,000

Action History	Amend Adjust	Date	Remarks
Added to TIP	Amend	11/30/11	

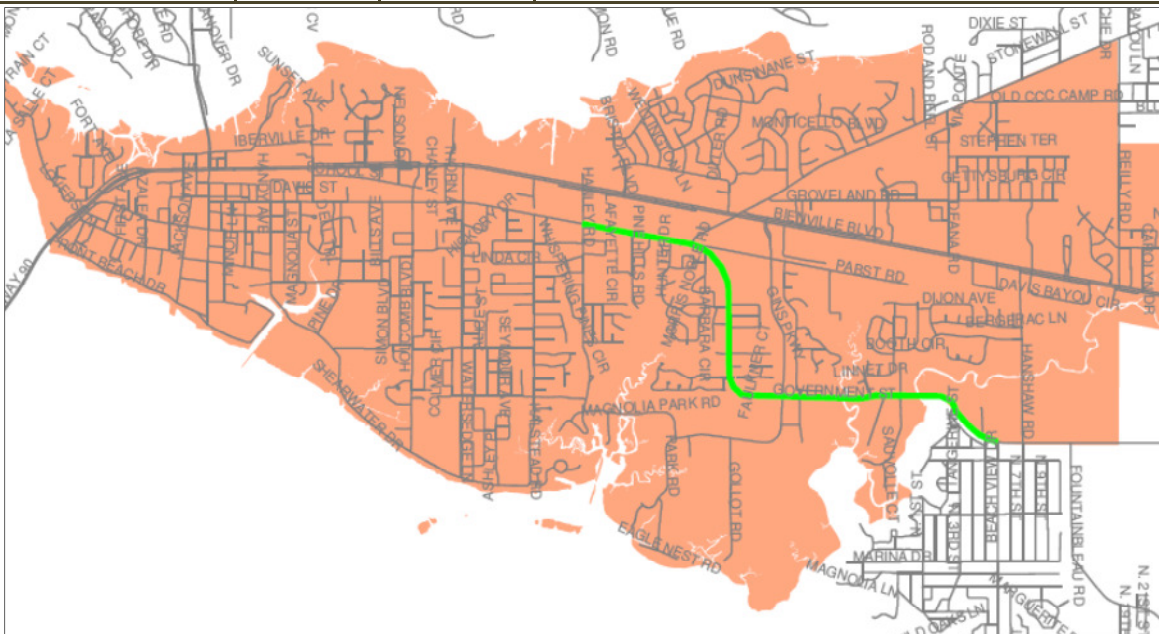


**Mississippi Gulf Coast MPO
Transportation Improvement Program (TIP)
FY 2012-2015**

Route/Category:	Government Street		
Termini:	Hanley Road to Hanshaw Rd		
Improvement Type:	Reconstruction	Responsible Agency:	Ocean Springs
Project Length:	2.5 miles	County:	Jackson County
Project Description:	Improved sidewalks and pedestrian bridge over bayou		

Fiscal Year	Fund Source	Phase	Federal Funds	Local Funds	Total Funds
		ENV			
		DESIGN			
		ROW			
2013	STP	CON	\$889,679	\$223,000	\$1,112,679

Action History	Amend Adjust	Date	Remarks
Added to TIP	Amend	11/30/11	
Termini Change	Amend	1/2012	From "Hanley Rd to east side of Davis Bayou" to "Hanley Rd to Beachview Rd"
Termini Change	Amend	10/1/2012	From "Hanley Rd to Beachview Rd" to "Hanley Rd to Hanshaw Rd"

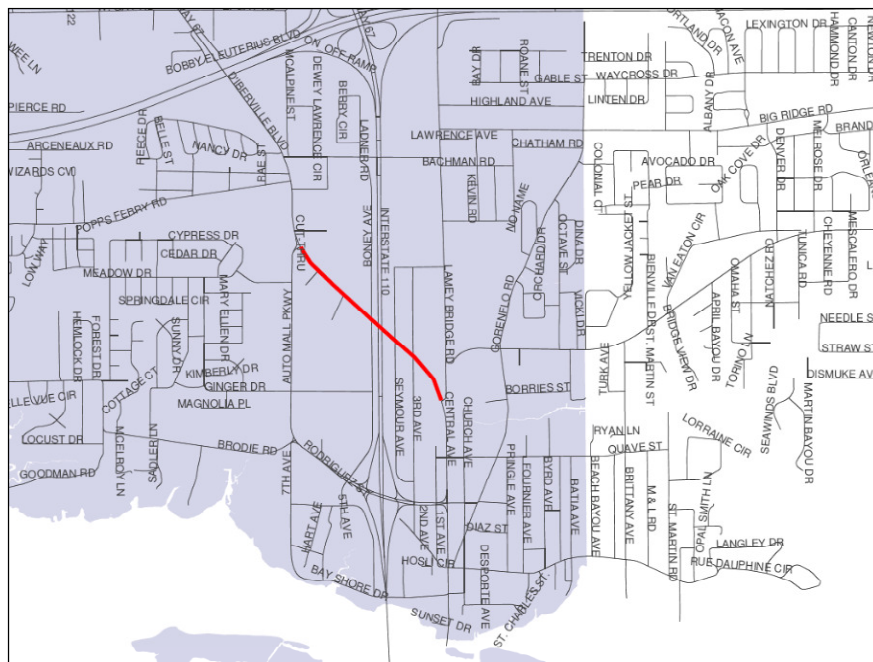


**Mississippi Gulf Coast MPO
Transportation Improvement Program (TIP)
FY 2012-2015**

Route/Category:	D'Iberville Boulevard		
Termini:	Central Avenue to Automall Parkway		
Improvement Type:	Pedestrian/Bike	Responsible Agency:	City of D'Iberville
Project Length:	7800 feet	County:	Harrison
Project Description:	Sidewalks within public ROW on north side of road. Pavement widening to create on-street travel space for bicycles		

Fiscal Year	Fund Source	Phase	Federal Funds	Local Funds	Total Funds
		ENV			
		DESIGN			
		ROW			
2013	STP	CON	\$97,002	\$24,250	\$121,253

Action History	Amend Adjust	Date	Remarks
Added to TIP	Amend	11/30/11	

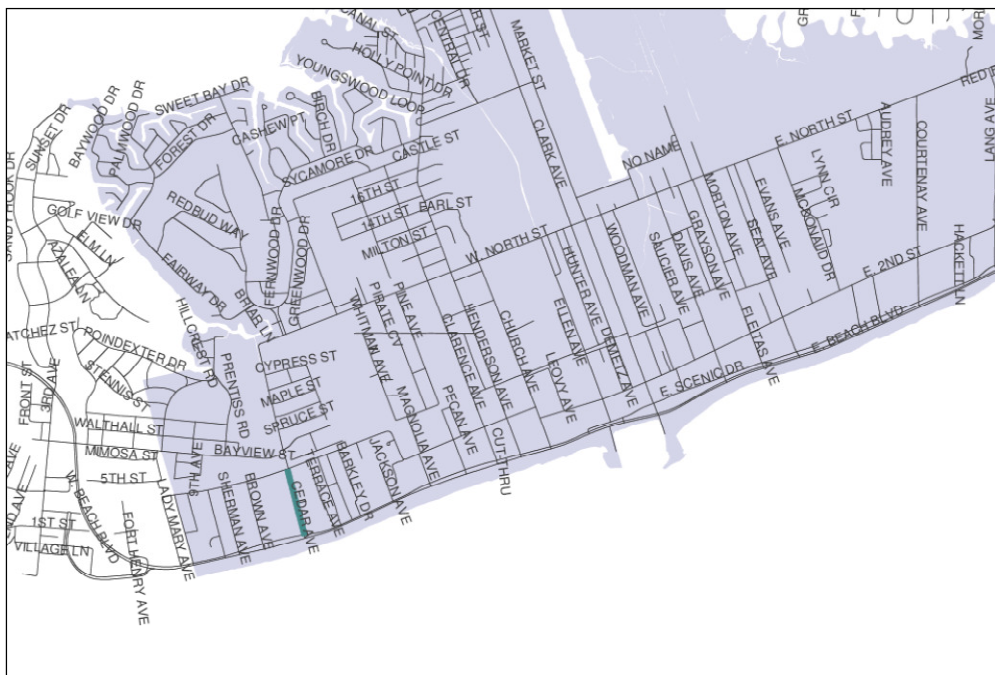


**Mississippi Gulf Coast MPO
Transportation Improvement Program (TIP)
FY 2012-2015**

Route/Category:	Cedar Avenue		
Termini:	Railroad to US 90		
Improvement Type:	Capacity	Responsible Agency:	Pass Christian
Project Length:		County:	Harrison County
Project Description:	Widen 20 foot, one-way street to accommodate two-way traffic. Sidewalks will be added.		

Fiscal Year	Fund Source	Phase	Federal Funds	Local Funds	Total Funds
		ENV			
		DESIGN			
		ROW			
2015	STP	CON	\$163,570	\$40,892	\$204,463

Action History	Amend Adjust	Date	Remarks
Added to TIP	Amend	11/30/11	

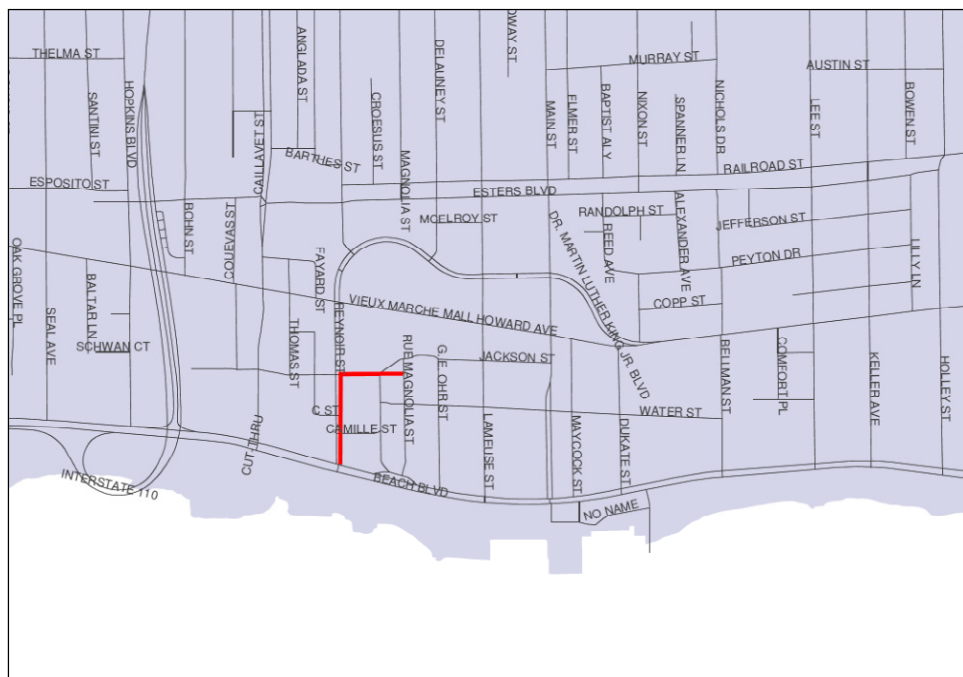


**Mississippi Gulf Coast MPO
Transportation Improvement Program (TIP)
FY 2012-2015**

Route/Category:	Reynoir Street and Jackson Street		
Termini:	Downtown Biloxi		
Improvement Type:	Pedestrian	Responsible Agency:	City of Biloxi
Project Length:		County:	Harrison County
Project Description:	Crosswalks and ADA compliance in project area		

Fiscal Year	Fund Source	Phase	Federal Funds	Local Funds	Total Funds
		ENV			
		DESIGN			
		ROW			
2014	STP	CON	\$74,400	\$18,600	\$93,000

Action History	Amend Adjust	Date	Remarks
Added to TIP	Amend	11/30/11	

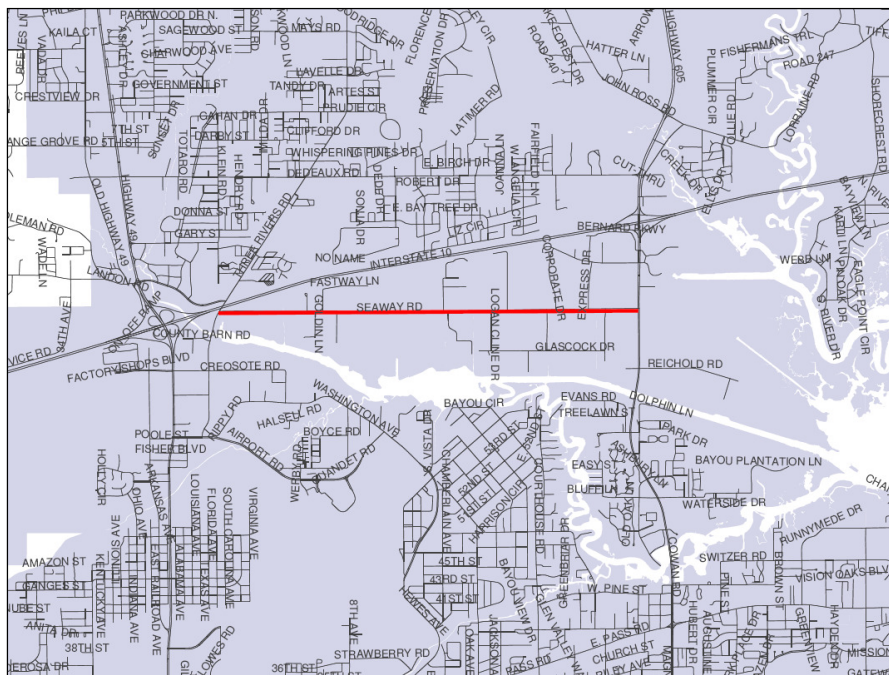


**Mississippi Gulf Coast MPO
Transportation Improvement Program (TIP)
FY 2012-2015**

Route/Category:	Seaway Road Pedestrian Path		
Termini:	Three Rivers Road to Lorraine Road		
Improvement Type:	Pedestrian/Bike	Responsible Agency:	City of Gulfport
Project Length:		County:	Harrison County
Project Description:	Walk and bike path on south side of the road		

Fiscal Year	Fund Source	Phase	Federal Funds	Local Funds	Total Funds
		ENV			
		DESIGN			
		ROW			
2013	STP	CON	\$788,304	\$197,076	\$985,380

Action History	Amend Adjust	Date	Remarks
Added to TIP	Amend	11/30/11	

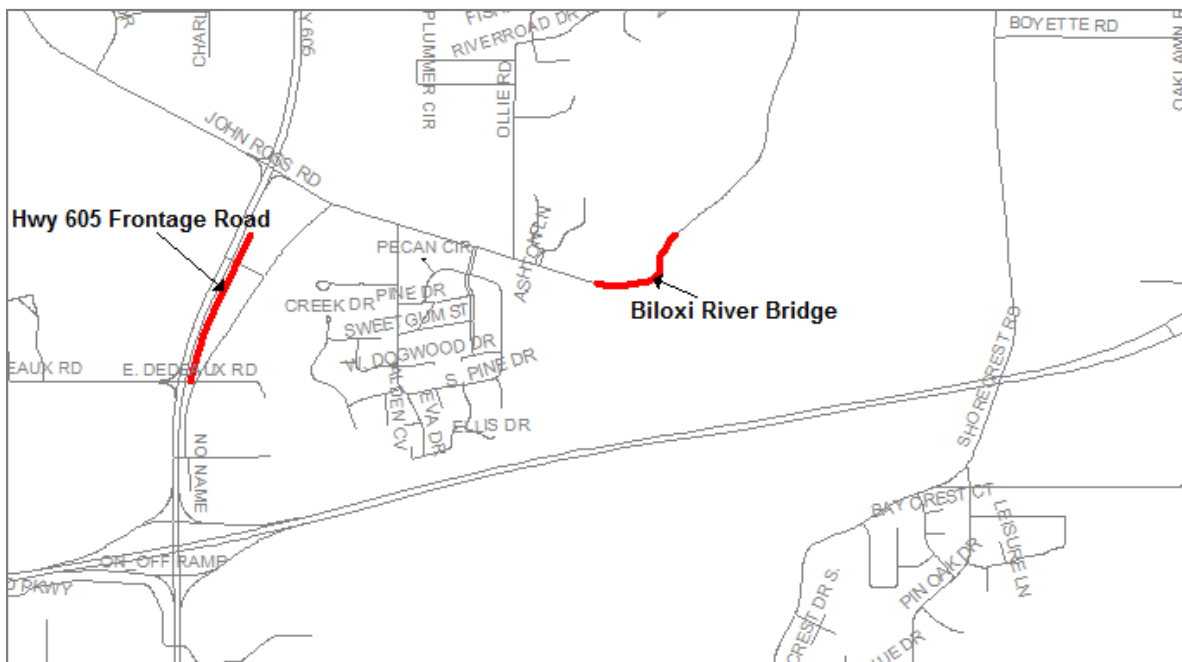


**Mississippi Gulf Coast MPO
Transportation Improvement Program (TIP)
FY 2012-2015**

Route/Category:	Biloxi River Bridge		
Termini:	Lorraine Road		
Improvement Type:	Bridge	Responsible Agency:	Harrison County
Project Length:	.25 mile	County:	
Project Description:	Bridge over the Biloxi River on Lorraine Road		

Fiscal Year	Fund Source	Phase	Federal Funds	Local Funds	Total Funds
		ENV			
		DESIGN			
2013	State Aid	CON	\$3,000,000	\$750,000	
2013	STP	CON	\$4,155,200	\$1,038,800	\$9,774,000

Action History	Amend Adjust	Date	Remarks
Added to TIP	Amend	10/1/2012	

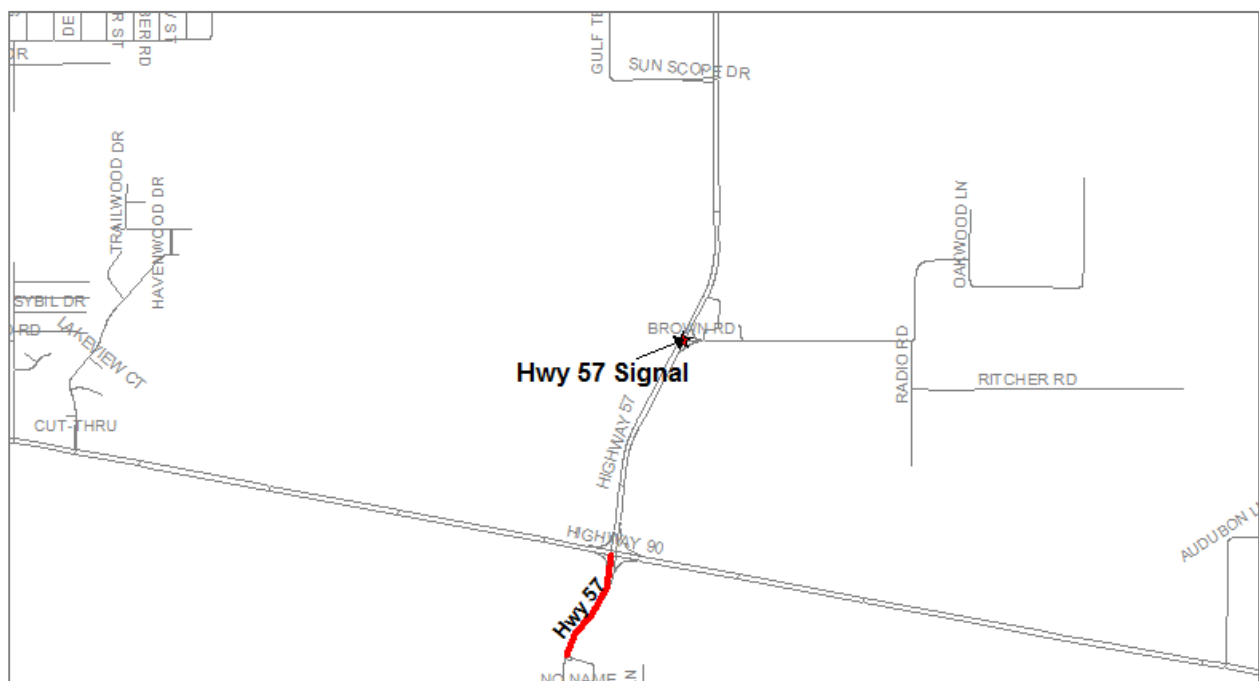


**Mississippi Gulf Coast MPO
Transportation Improvement Program (TIP)
FY 2012-2015**

Route/Category:	Hwy 57		
Termini:	Brown Road		
Improvement Type:	Intersection	Responsible Agency:	Gautier
Project Length:	N/A	County:	Jackson County
Project Description:	Signal		

Fiscal Year	Fund Source	Phase	Federal Funds	Local Funds	Total Funds
		ENV			
		DESIGN			
		ROW			
2013	STP	CON	\$100,000	\$40,000	\$140,000

Action History	Amend Adjust	Date	Remarks
Added to TIP	Amend	10/1/2012	

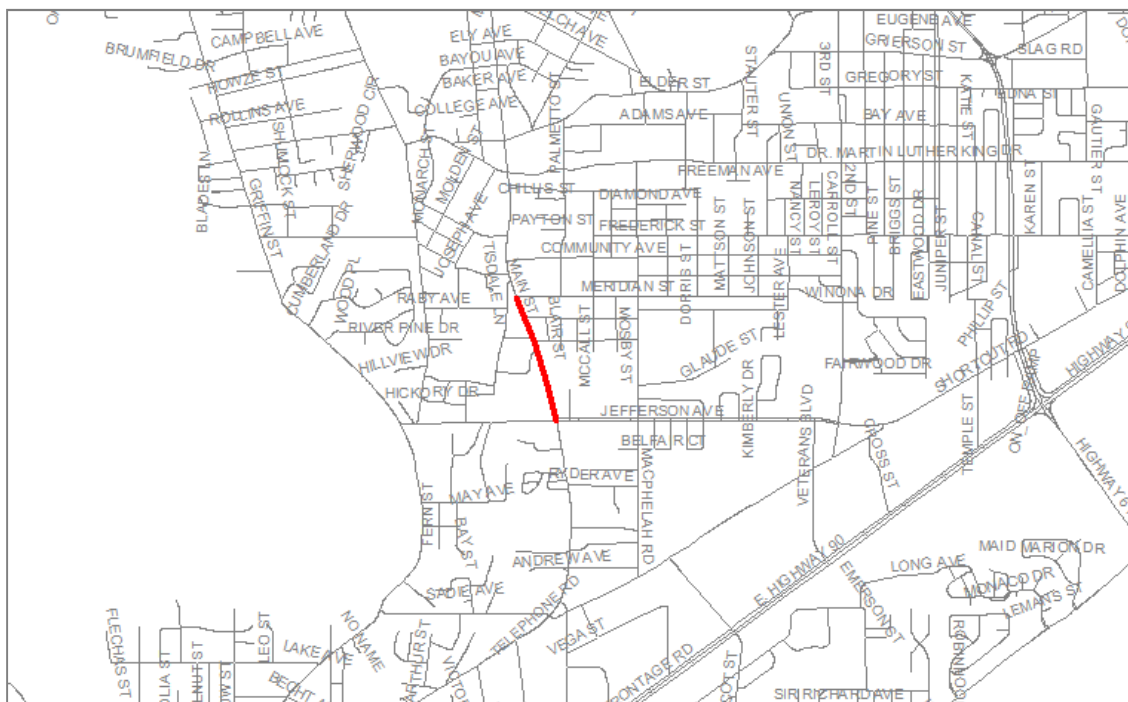


**Mississippi Gulf Coast MPO
Transportation Improvement Program (TIP)
FY 2012-2015**

Route/Category:	Main Street		
Termini:	Ely Street to Jefferson Street		
Improvement Type:	Sidewalks	Responsible Agency:	Moss Point
Project Length:	2300 ft	County:	Jackson
Project Description:	Extend sidewalks on Main Street in Moss Point		

Fiscal Year	Fund Source	Phase	Federal Funds	Local Funds	Total Funds
		ENV			
		DESIGN			
		ROW			
2013	STP	CON	\$244,000	\$61,000	\$305,000

Action History	Amend Adjust	Date	Remarks
Added to TIP	Amend	10/1/2012	

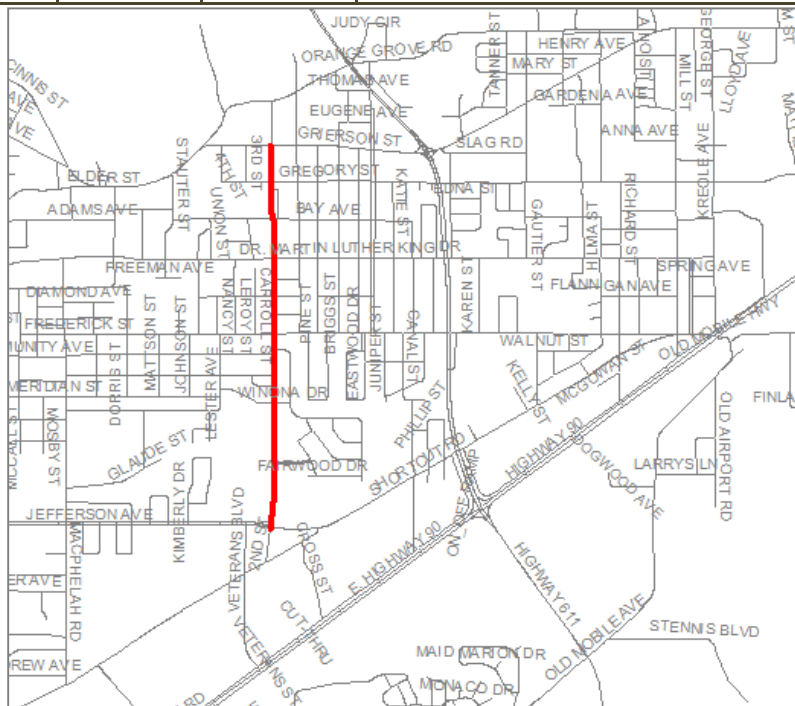


**Mississippi Gulf Coast MPO
Transportation Improvement Program (TIP)
FY 2012-2015**

Route/Category:	Second Street		
Termini:	Jefferson Street to Grierson Street		
Improvement Type:	Pedestrian/Bicycle	Responsible Agency:	Moss Point
Project Length:	6700 ft	County:	Jackson
Project Description:	Sidewalk project		

Fiscal Year	Fund Source	Phase	Federal Funds	Local Funds	Total Funds
		ENV			
		DESIGN			
		ROW			
2014	STP	CON	\$200,000	\$50,000	\$250,000

Action History	Amend Adjust	Date	Remarks
Added to TIP	Amend	10/1/2012	



Mississippi Gulf Coast MPO
Transportation Improvement Program (TIP)
FY 2012-2015
Other Federal Projects

FY	Project	Responsible Agency	Fund Source	Federal Funds	Local Funds	Total Funds
2012	Desoto	US Forest Service	Public Lands Highway-Forest Highway	\$340,871	\$0	\$340,871
2012	Sandhill Crane National Wildlife Refuge	US Forest Service	Refuge Roads	\$4,643,455	\$0	\$4,643,455
2012	Gulf Island National Seashore	National Park Service	Park Roads and Parkways	\$598,200	\$0	\$598,200
2012	Hurricane Evacuation Information		Earmark	\$60,000	\$0	\$60,000
2012	Tri-County Automated System	USM	Earmark	\$1,000,000	\$0	\$1,000,000
2012	Mini Vans purchase	Singing River Hospital System	Section 5310	\$69,838	\$0	\$69,838
2012	ITS Deployment - Communications	Harrison County Sheriff	Earmark	\$1,163,659	\$0	\$1,163,659
2012	Port Bienville Intermodal Connector Study	Hancock County Port	Earmark	\$1,000,000	\$0	\$1,000,000
2012	Port Bienville Intermodal Connector Study	Hancock County Port	Earmark	\$2,400,000	\$570,000	\$2,970,000
2012	Bicycle Path	City of Pascagoula	Earmark	\$120,000	\$30,000	\$150,000
2012						
2012						
2012						
2012						

**Mississippi Gulf Coast MPO
Transportation Improvement Program (TIP)
FY 2012-2015**

Coast Transit Authority Funding

Year Apportioned	Project	Fund Source	Federal Funds	Local Funds	Total Funds
2012	Operating Assistance For Period 10/01/11 Through 9/30/12	Sec 5307	\$2,125,000	\$2,125,000	\$4,250,000
2012	Preventive Maintenance	Sec 5307 or 5309	\$780,000	\$195,000	\$975,000
2012	Marketing/Planning	Sec 5307	\$80,000	\$20,000	\$100,000
2012	Computer Equipment	Sec 5307 or 5309	\$18,000	\$2,000	\$20,000
2012	Shop Equipment	Sec 5307 or 5309	\$8,000	\$2,000	\$10,000
2012	ADA Operating Expense	Sec 5307	\$260,000	\$65,000	\$325,000
2012	Transit Enhancements	Sec 5307 or 5309	\$40,000	\$10,000	\$50,000
2012	Facility Rehab & Renovations	Sec 5307 or 5309	\$160,000	\$40,000	\$200,000
2012	Purchase Office Equipment	Sec 5307 or 5309	\$8,000	\$2,000	\$10,000
2012	Purchase Farebox Equipment	Sec 5307 or 5309	\$40,000	\$10,000	\$50,000
2012	Purchase Communication Equipment	Sec 5307 or 5309	\$16,000	\$4,000	\$20,000
2012	Purchase Revenue Vehicles	Sec 5307 or 5309	\$400,000	\$100,000	\$500,000
2012	Gulfport Intermodal Center Construction	Sec 5309	\$5,812,800	\$1,453,200	\$7,266,000
2012	Purchased Transportation	5307 Capital	\$208,000	\$52,000	\$260,000
2012	JARC Purchased Transportation	Sec 5316	\$165,000	\$165,000	\$330,000
2012	New Freedom Services	Sec 5317	\$45,000	\$45,000	\$90,000
2013	Operating Assistance For Period 10/01/12 Through 9/30/13	Sec 5307	\$2,190,000	\$2,190,000	\$4,380,000
2013	Preventive Maintenance	Sec 5307 or 5309	\$804,000	\$201,000	\$1,005,000
2013	Marketing/Planning	Sec 5307	\$80,000	\$20,000	\$100,000
2013	Computer Equipment	Sec 5307 or 5309	\$18,000	\$2,000	\$20,000
2013	Shop Equipment	Sec 5307 or 5309	\$8,000	\$2,000	\$10,000
2013	ADA Operating Expense	Sec 5307	\$268,000	\$67,000	\$335,000
2013	Transit Enhancements	Sec 5307 or 5309	\$40,000	\$10,000	\$50,000
2013	Facility Rehab & Renovations	Sec 5307 or 5309	\$160,000	\$40,000	\$200,000
2013	Purchase Office Equipment	Sec 5307 or 5309	\$8,000	\$2,000	\$10,000
2013	Purchase Farebox Equipment	Sec 5307 or 5309	\$40,000	\$10,000	\$50,000
2013	Purchase Communication Equipment	Sec 5307 or 5309	\$16,000	\$4,000	\$20,000
2013	Purchase Revenue Vehicles	Sec 5307 or 5309	\$400,000	\$100,000	\$500,000
2013	Purchase Support Vehicles	Sec 5307 or 5309	\$24,000	\$6,000	\$30,000
2013	JARC Purchased Transportation	Sec 5316	\$165,000	\$165,000	\$330,000
2013	New Freedom Services	Sec 5317	\$45,000	\$45,000	\$90,000
2013	Hydrogen Fuel Cell Project	FTA Clean Fuels	\$5,000,000	\$1,250,000	\$6,250,000
2013	Purchase Support Vehicles	Sec 5307	\$150,000	\$30,000	\$12,000

**Mississippi Gulf Coast MPO
Transportation Improvement Program (TIP)
FY 2012-2015**

Coast Transit Authority Funding

Year Apportioned	Project	Fund Source	Federal Funds	Local Funds	Total Funds
2014	Operating Assistance For Period 10/01/13 Through 9/30/14	Sec 5307	\$2,257,500	\$2,257,500	\$4,515,000
2014	Preventive Maintenance	Sec 5307	\$828,800	\$207,200	\$1,036,000
2014	Marketing/Planning	Sec 5307	\$80,000	\$20,000	\$100,000
2014	Computer Equipment	Sec 5307 or 5309	\$18,000	\$2,000	\$20,000
2014	Shop Equipment	Sec 5307 or 5309	\$8,000	\$2,000	\$10,000
2014	ADA Operating Expense	Sec 5307	\$276,000	\$69,000	\$345,000
2014	Transit Enhancements	Sec 5307 or 5309	\$40,000	\$10,000	\$50,000
2014	Facility Rehab & Renovations	Sec 5307 or 5309	\$160,000	\$40,000	\$200,000
2014	Purchase Office Equipment	Sec 5307 or 5309	\$8,000	\$2,000	\$10,000
2014	Purchase Farebox Equipment	Sec 5307 or 5309	\$40,000	\$10,000	\$50,000
2014	Purchase Communication Equipment	Sec 5307 or 5309	\$16,000	\$4,000	\$20,000
2014	Purchase Revenue Vehicles	Sec 5307 or 5309	\$400,000	\$100,000	\$500,000
2014	Purchase Support Vehicles	Sec 5307 or 5309	\$24,000	\$6,000	\$30,000
2014	JARC Purchased Transportation	Sec 5316	\$165,000	\$165,000	\$330,000
2014	New Freedom Services	Sec 5317	\$72,000	\$18,000	\$90,000
2015	Operating Assistance For Period 10/01/14 Through 9/30/15	Sec 5307	\$2,327,500	\$2,327,500	\$4,655,000
2015	Preventive Maintenance	Sec 5307	\$854,400	\$213,600	\$1,068,000
2015	Marketing/Planning	Sec 5307	\$80,000	\$20,000	\$100,000
2015	Computer Equipment	Sec 5307 or 5309	\$18,000	\$2,000	\$20,000
2015	Shop Equipment	Sec 5307 or 5309	\$8,000	\$2,000	\$10,000
2015	ADA Operating Expense	Sec 5307	\$284,800	\$71,200	\$356,000
2015	Transit Enhancements	Sec 5307 or 5309	\$40,000	\$10,000	\$50,000
2015	Facility Rehab & Renovations	Sec 5307 or 5309	\$160,000	\$40,000	\$200,000
2015	Purchase Office Equipment	Sec 5307 or 5309	\$8,000	\$2,000	\$10,000
2015	Purchase Farebox Equipment	Sec 5307 or 5309	\$40,000	\$10,000	\$50,000
2015	Purchase Communication Equipment	Sec 5307 or 5309	\$16,000	\$4,000	\$20,000
2015	Purchase Revenue Vehicles	Sec 5307 or 5309	\$400,000	\$100,000	\$500,000
2015	Purchase Support Vehicles	Sec 5307 or 5309	\$24,000	\$6,000	\$30,000
2015	JARC Purchased Transportation	Sec 5316	\$165,000	\$165,000	\$330,000
2015	New Freedom Services	Sec 5317	\$72,000	\$18,000	\$90,000

Mississippi Gulf Coast MPO
Transportation Improvement Program (TIP)
FY 2012-2015
Grouped Projects

Bicycle, Pedestrian and Transit

FY	Agency	Fund Source	Federal Funds	Local Funds	Total Funds
2012	GRPC	STP	\$559,949	\$139,987	\$699,936
2013	GRPC	STP	\$559,949	\$139,987	\$699,936
2014	GRPC	STP	\$559,949	\$139,987	\$699,936
2015	GRPC	STP	\$559,949	\$139,987	\$699,936

Safety

FY	Agency	Fund Source	Federal Funds	Local Funds	Total Funds
2012	GRPC	STP	\$559,949	\$0	\$559,949
2013	GRPC	STP	\$559,949	\$0	\$559,949
2014	GRPC	STP	\$559,949	\$0	\$559,949
2015	GRPC	STP	\$559,949	\$0	\$559,949

MPO Studies/Projects

FY	Agency	Fund Source	Federal Funds	Local Funds	Total Funds
2012	GRPC	STP	\$400,000	\$100,000	\$500,000
2013	GRPC	STP	\$400,000	\$100,000	\$500,000
2014	GRPC	STP	\$400,000	\$100,000	\$500,000
2015	GRPC	STP	\$400,000	\$100,000	\$500,000

**Public Participation Summary Report:
2012-2015 Transportation Improvement Program
and the Public Participation Plan Update**

Fall 2011 TIP Update

Public Participation Summary report

The MS Gulf Coast MPO held four public open-houses providing an opportunity for community members to review and make comment on both the TIP (Transportation Improvement Program) and the PPP (Public Participation Plan). This report summarizes the events, lists the public comments received and documents some lessons learned for future planning activities. There are two appendix chapters. Appendix A is event photos and Appendix B is a blank copy of the public comment sheet.

Public Engagement Activities

Public outreach encouraging awareness of and participation in the public open-houses was conducted through several methods including; print publications in local media, in person invitations, translated materials as appropriate, yard signs in project areas, email invitations and utilization of the GRPC website.

DATE	Activity(result)
10/4	Legal Notice in Sun Herald
10/4	TIP and PPP drafts available on GRPC website for review and comment
10/5	Public Open house Invitation flier posted on GRPC website
10/10	TIP and PPP at libraries for public review (Ocean Springs, Gulfport, Bay St. Louis, Pass Christian, Long Beach, Biloxi, D'Iberville)
10/12	Save the date distributed to MPO members via email
11/6	Display ad in Sun Herald
11/1-11/7	433 personally delivered fliers to businesses (13 were Spanish translated) and 47 yard signs were distributed throughout the proposed project areas
11/8	Harrison Co. Open House (21 guests, 7 MDOT reps, 1 FHWA Rep, 1 CTA Rep, 4 GRPC staff)
11/9	Jackson Co. Open House (5 guest, 2 MDOT reps, 3 GRPC staff)
11/10	Hancock Co. Open House (5 guest, 2 MDOT reps, 4 GRPC staff)
11/20	Article in MS Press promoting Ocean Springs meeting
11/18	Article in Sun Herald promoting Ocean Springs meeting
11/21	Ocean Springs Open House (2 guests, 2 GRPC staff)

Measuring Performance: Lessons learned/Action Items

The Sun Herald display ad received much better placement and was more informative to the public than the small legal ad placed at the beginning of the process. It needs to be discussed whether spending money on legal ads buried in columns is a worthwhile expense or if we should just focus on display ads in the future.

Opportunity notices will be published in the Sea Coast Echo for Hancock County projects and the MS Press for Jackson County projects in the future. We hope this will garner more local participation. MS Press was used to advertise the Ocean Springs Open House.

MGCCC in Jackson Co. is a difficult location to find. The campus is large and without the yard signs in place would be very confusing to the general public. The room was nice but in a less busy part of the campus so engaging the students was difficult. Also, the room is excessively large for our event purposes. We used tables to cut the room in half so that it looked full and interesting for guests. Lastly,

it is absolutely not allowed that we bring in any snacks or drinks for the guests. All food and beverages must be purchased through campus services. This is not cost effective for our needs so we end up having no refreshments for the guests or partners working the event with staff members. For future public meetings we will look at identifying other venue options.

We will target local interest groups for attendance in the future. This could help boost attendance and garner even greater useful feedback for proposed projects. We will compile a contact list of the local interest groups for future use.

Public Comments Received

It is important to note that the PPP was available at each of the libraries listed above, at each open house and in the GRPC front office for public review and comment throughout the participation period. No comments were submitted for the PPP. Below are the comments submitted for the proposed TIP projects. All comments on the projects are combined below. Individual responses can be requested from the Public Involvement Coordinator, splancich@grpc.com and will be scanned as attachments to the 2012-2015 TIP.

The last page of this summary report is a blank copy of the Project Suggestion Card filled out by members of the public. From these sheets, I have extracted the public comments and have written them in below. There are three questions summarized for each project.

1. What is your desired outcome? What do you want the project to look like?
2. Do you feel this project supports your desired outcome?
 - a. No
 - b. Yes
3. What would make you unhappy at the end of the project?

NOTE: We received one public comment sheet on the MDOT- STIP materials presented during the Harrison County Open-House. "Well thought out, needed improvements." A copy of the completed form, including contact information, was forwarded to MDOT on 11/15/2011.

All comments for projects relevant to a jurisdiction/project sponsor will be forwarded to them for their consideration

City of Gulfport: Ship Island

Build a new elevated terminal building and pier where ferry boats dock for passenger boarding

❖ *Alternate plans and design options dropped off at GRPC. Available to view upon request.*

1. What is your desired outcome?

- Easy access to the ferry
- Simple, straight forward building without over spending to raise it
- Not overdone like transit shelters
- Build the terminal at ground level
- User friendly
- Cost Effective
- They provide, I appreciate the recreation
- Ground level or only slightly raised structure
- Should not have long ramps, will not serve well
- Increased tourism of ferry trips that encourages shopping and eating downtown

2. Do you feel this project supports your desired outcome?

a. No

- Having to use elevators and stairs is lengthy and inconvenient when traveling with an ice chest, chairs, etc.
- Access to the restrooms, ticket sales, snack bar should be quick, easy and within sight of boarding location
- Too hard to access if built on an elevated structure
- Build at user friendly level
- Removable during threat of storm
- Ramp will inhibit use by people with limited strength and stamina
- Single elevator will not solve the problem, since crowds arrive at once and are large

b. Yes

- Fits my desire but only with signs, parking and pathways from downtown to terminal

3. What would make you unhappy at the end of the project?

- A building that would cause inconvenience to customers
- A raised building above the boarding location
- Building another expensive two story building
- Tall
- Expensive
- NOT user friendly bathrooms
- Waste of tax payer money
- Poorly spent money on a bad design
- No increase in tourist use
- No economic benefit for local business
- No direct links to downtown
- Expended funds with no payback

City of Gulfport: Jones Park

Pedestrian walk over bridge across Hwy.90 to link the park with downtown

1. What is your desired outcome?

- Hope to see the crossover bridge connecting downtown with the Gulfport yacht harbor and Jones Park
- Provide safe access across Hwy 90
- Consistent style with downtown with pathways to Hwy 90
- Well signaled crosswalks at ship island terminal entrance and at CTA Station
- Connect Ship Island to downtown with a styled pathway and crosswalk
- Build Safe structures in Jones Park

2. Do you feel this project supports your desired outcome?

a. No

- Proposed solution not functional – providing a single crossing will rarely get used.
- Money spent on one bridge could pay for several at-grade crossing improvements
- Frivolous expenditure but idea for crossings is good

b. Yes

- Yes, Parking for visitors to Ship Island and the ferry service will be limited in the new Jones Park. A cross over will allow ferry customers to park downtown when the harbor is full during peak summer weekends

3. What would make you unhappy at the end of the project?

- Great project!
- Will be a huge stimulus to businesses in downtown while offering safe crossing of Hwy 90
- Overly expensive solution that provides very little benefit
- I will not use an over pass bridge so I don't expect others to
- Can't we get multiple well-lit/signaled crosswalks styled and landscaped for the same coast as one bridge?
- Won't it be easier and cheaper to repair a crosswalk rather than a bridge if we get another Katrina type storm?
- Build the harbor and buildings in a status that will resist hurricanes

City of Gulfport: Dedeaux Road

Build a new elevated terminal building and pier where ferry boats dock for passenger boarding

1. What is your desired outcome?

- Widen the road in the least expensive and most expeditious manner as possible to a five lane/divided Blvd. with walking and biking paths
- Would like to see Road widened - 2 way road very dangerous at this time
- Safe and Clean sidewalks for bikes that link to Hwy 605 and Seaway for a loop
- More lanes for traffic
- Speed controls

2. Do you feel this project supports your desired outcome?

a. No

b. Yes

- Yes
- Yes
- Yes and No, will path be cleaned for use, will speed controls be installed

3. What would make you unhappy at the end of the project?

- Unhappy if it is not completed
- Construction needs to start on schedule (End of March 2013)
- Would like a left and right hand turn lane for my property – it will be difficult to do U-turns
- Will signs be installed for driver instruction of bike/walk/child safety?
- Will my driveway be blocked?
- Are there right of way needs? Where?
- How will my commute be affected?
- Will project be done in phases or all at once?
- Will there be support getting in and out of my neighborhood? Temporary all way stop signs?
- Will work be done during the day to control evening noise and dust?
- Where will crosswalks be added?
- Will we have full length bus service?
- Will this mirror what's been done from three rivers to Hwy 90?
- How is this being paid for?
- Lots of low-income and elderly, need to have bus service to hospital and mall.

City of Gulfport: Seaway Road

Pedestrian Pathway on Southside of Seaway Road

1. *What is your desired outcome?*

- A clean, safe path with crosswalks to services on North side of street
- Link to other existing and planned pathways, ex. Hwy 605/Lorraine bike lanes

2. *Do you feel this project supports your desired outcome?*

a. *No*

b. *Yes*

- Yes, but need to ensure paths are clean otherwise can't use them anyway

3. *What would make you unhappy at the end of the project?*

- Unclean, therefore unsafe pathway = waste of money
- Any thought to add/allow for high speed internet and cable for the businesses?
- Will there be separation from traffic?
- Will crosswalks with signals be added to cross the street?
- Will there be bike racks and benches along the path?
- Will speed limit increase? Will it be enforced?
- Will clients & employees have trouble getting to my business?
- Will side streets off seaway road ever be improved?
- Will improved bus service be added with covered stops the length of Seaway for the Knight Center, MGCCC campus, Medicare office and businesses?
- Will those in wheel chairs be able to use the pathway safely and cross the street?

City of Pass Christian: Cedar Ave

From Hwy 90 to Everett turn one way street into two lanes with sidewalks

1. *What is your desired outcome?*

- Landscaped with speed controls
- Don't want to lose small town, safe feeling

2. *Do you feel this project supports your desired outcome?*

a. *No*

b. *Yes*

- Don't know

3. *What would make you unhappy at the end of the project?*

- Will you be taking any of my land along the street?
- What speed controls?
- Any landscaping?
- Sidewalks on one side?
- Crosswalk over Hwy 90?
- When will this project happen?

City of Bay St Louis: Hwy 90

Add a walk and bike path to Southside from Main Street to BSL Bridge

1. What is your desired outcome?

- A good size bike/walk loop from over the bridge down Hwy 90 through downtown then back up Beach Blvd. to bridge
- Clean and safe place to ride a bike
- Loop into beach Blvd.
- Connected, walkable community with lighting and landscaping

2. Do you feel this project supports your desired outcome?

a. No

b. Yes (3)

3. What would make you unhappy at the end of the project?

- Will a lane be closed during construction?
- Where are the match funds coming from?
- Will homes and businesses on services roads be blocked or difficult to get to?
- Will crosswalks be added/improved across Hwy 90? If so, where?
- Who will clean the pathway for users?
- Will paths be on both sides of Hwy 90?
- We need an environmental impact study to quantify the value of all the streetscape improvements
- Diversions
- Construction Waste

City of Bay St Louis: Old Spanish Trail

Add sidewalks from Washington Street to Main Street

1. What is your desired outcome?

- A safe loop with the Beach Blvd and Hwy 90 projects
- ADA compliant for the seniors in project area
- Improve access to my business on corner of WA and OST

2. Do you feel this project supports your desired outcome?

a. No

- Yes and No. It ends right before my business but gets people closer.

b. Yes

- Yes – if ADA

3. What would make you unhappy at the end of the project?

- Not built for safe use of seniors and kids in neighborhood
- Will there be any right of way concerns or needs?
- Will there be sidewalks on both sides of the street?
- Are there plans to extend the sidewalks further on OST?
- Need sidewalks to Washington St. intersection businesses
- Will there be a crosswalk with light?

City of D'Iberville: D'Iberville Blvd.

Add sidewalks and widened shoulder for bicycle traffic from Automall Pkwy to Central Ave

1. *What is your desired outcome?*

- Complete the project without blocking access to my business. 10470 D'Iberville Blvd.
- Smooth connection with project already being done [on central]
- Safe road crossings between food and stores

2. *Do you feel this project supports your desired outcome?*

a. *No*

b. *Yes*

- Yes, so long as there are enough crosswalks at street intersections between stores and restaurants. Ex. McDonalds and Win-Dixie shopping center

3. *What would make you unhappy at the end of the project?*

- No crosswalks
- No signals
- No crosswalk at Automall
- Traffic not respecting bicyclists

City of Biloxi: Reynoir St. and Jackson St.

Add sidewalks and improve ADA compliance of existing sidewalks

1. *What is your desired outcome?*

Easier access to hospital and walking streets to stores

2. *Do you feel this project supports your desired outcome?*

a. *No*

b. *Yes*

- Yes

3. *What would make you unhappy at the end of the project?*

- Will ROW affect the homes/offices?
- What ADA improvements are planned?
- Will it match existing walking area, brick pathway styles?

City of Ocean Springs: Government St.

Improve sidewalks and pedestrian bridge from Hanley road to East side of Davis Bayou

1. ***What is your desired outcome?***
 - *A complete, safe path for community members*
2. ***Do you feel this project supports your desired outcome?***
 - a. ***No***
 - b. ***Yes***
 - Yes – if there are safe crossings and sidewalks added where there are none
3. ***What would make you unhappy at the end of the project? Question?***
 - Gaps in sidewalks left at the end of the project
 - Spending money on areas that don't require immediate repair

Comments Forwarded to CTA for their Consideration

We did not specifically collect public comments or seek feedback or suggestions on CTA services during this public review and comment period, however, some questions and comments were submitted.

All CTA related comments are listed below and were submitted to Kevin Coggin the CTA Executive Director CTA for consideration in their planning process.

- Gulfport: Dedeaux Road project - Will we have full length bus service?
- Gulfport: Dedeaux Road project - Lots of low-income and elderly, need to have bus service to hospital and mall.
- Gulfport: Seaway Road Pathway project - Will improved bus service be added with covered stops the length of Seaway for the Knight Center, MGCCC campus, Medicare office and businesses?
- Biloxi: Need bus services up Popps Ferry Road
- Gulfport: Need bus service along Dedeaux Road
- Need bus service until 8pm or later to all libraries 7 days per week

Measuring Performance: Lessons learned/Action Items

The personal invitation to the businesses in project areas took a large amount of time in both prep work and delivery. It did not result in huge numbers of event attendees but many of those who did come came because of the personal invitation. There were a total of 33 guests at the open-houses. We will add a column to the sign in sheets asking how they heard about the event in the future. This will provide a more accurate gauge for what strategies are working and which are not.

Some of the greatest benefits of the personal invitation strategy is that promotion of the event is focused on those most likely to be affected by the project, it increases public awareness of GRPC, it builds trust in the community and forms a basis for future participation activities. The greatest benefit though is the amount of public comments gathered during the one-on-one conversations. It was enlightening and effective to hear firsthand what the concerns and questions of the public are. Even though many did not attend the event, their comments were still recorded and provided to the appropriate jurisdiction and they were engaged. 421 businesses were met with and provided an opportunity to speak their concerns and were given an event flier for the meeting.

Submitted comment cards at the open houses were anonymous, so they can't be followed up on or clarified individually. Comments can be difficult to read or to understand. The one-on-one discussions require the staff member to record the comments so they can clarify meanings and understanding on the spot.

Smaller group meetings and personalized invitations, if chosen to be used again, need more time to work efficiently. It would be helpful if the deadline for project applications was moved up in the year. This will allow us to see where proposed projects are, identify groups in the local area and schedule the meetings instead of showing up on doorsteps randomly. Having smaller group sessions will also provide an opportunity for us to determine the best way to disseminate follow-up information on their suggestions, recommendations and questions. Currently we will post this information on the website and make it available upon the request of the public. There is no direct follow-up to maintain effective engagement with those who participated in this process.

Another benefit of having smaller meetings is the option to still have one final county meeting where results, responses and actions taken on the public comments will be displayed to participants. It is valuable that we not only ask for feedback but also demonstrate how it has been considered, discussed and utilized in the process. A justification for why a person's feedback will not affect a project's development is just as important to report back as why someone else's will be. This follow through on behalf of the MPO will develop trust in the organization and can lead to greater future public participation.

It was mentioned that a different schedule be applied in the future for MPO projects and program development to meet the requirement of "early and continuing" opportunities for the public to be involved in the transportation planning process. Although we had a larger than previous turn out, it was suggested that developing an annual calendar for public review and comment periods will help create a continuity of engagement and participatory opportunities. November may not be the best month for holding public meetings. The first meeting was the same day as voting and the weather was not cooperative the second two days.

The open-house style event was successful and allowed the guests to receive individual attention from GRPC, MPO, MDOT, CTA and FHWA staff members. We had interest from engineering and construction firms who were looking at potential bidding opportunities, business owners, homeowners and city

leadership attend. They could arrive when it was convenient for their schedules and leave without missing any information. The new layout of the TIP projects with the maps was a great addition commented upon by various staff members and reps. We will cut the event from 3 hours down to 2 hours until such a time as the need to stay longer is warranted.

Sticker Vote Results:

We conducted a sticker vote during all three public meetings. Participants were asked to choose their top 3 priorities from a list of 11 improvement projects or activities. 1st choice was red worth 3 points, 2nd choice was yellow worth 2 points and green was the third choice worth 1 point. Below are the response results.

Color	Traffic Accident Reduction	Improve intersection lighting	Improve bike/Ped Safety	More safety Education	Improved bus services	Safe routes to schools
Red	5	0	5	0	1	5
Yellow	7	8	7	1	2	3
green	6	0	6	4	3	2
TOTALS	35	16	35	6	10	23

Color	Bicycle paths & Lanes	Protect/Improve air quality	Reduce traffic congestion	Add/Improve crosswalks	Add/Improve sidewalks	
Red	5	2	18	3	5	
Yellow	2	1	7	4	4	
green	6	7	3	3	4	
TOTALS	25	15	71	20	27	

Based on the above scores the public priorities are as follows:

1. Reduce traffic congestion (Top priority: more than double the next highest score)
2. Improve bike/pedestrian safety
3. Traffic Accident Reduction
4. Add/Improve sidewalks
5. Add Bicycle lanes & paths
6. Safe routes to schools
7. Add/Improve crosswalks
8. Improve intersection lighting
9. Protect/Improve air quality
10. Improve/Extend Bus services
11. More safety education

Long range plan comparison:

This result shows consistency with the public survey conducted for the 2035 Long Range Transportation plan. At the LRTP public meetings members of the public and other stakeholders identified traffic congestion and associated air pollution as the top priority of the region and were asked to suggest

solutions. The top three reduction options were improved public transit, high-occupancy lanes and flexible work schedules.

This sticker vote reaffirms the priority for traffic congestion reduction and also demonstrates a high priority for adding, improving pedestrian and bicycle facilities and ensuring the safety of those using these alternative transportation options.

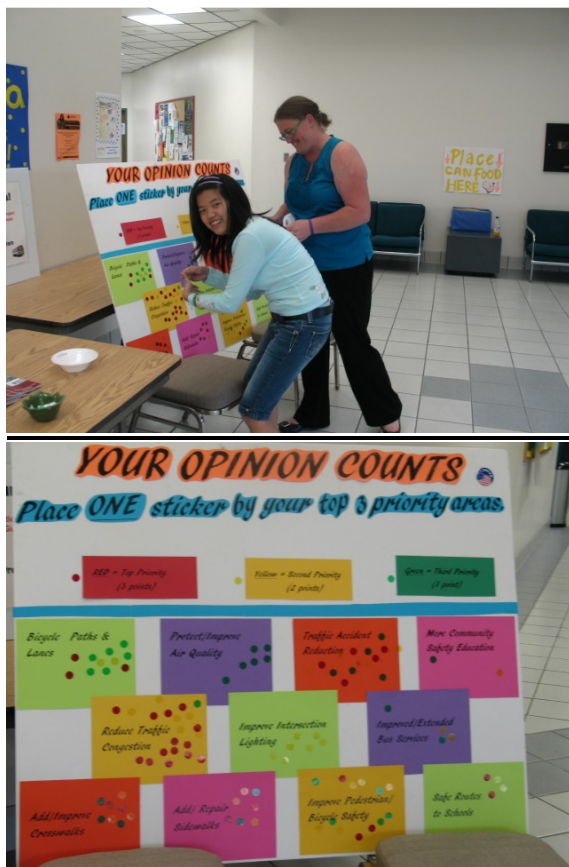
Measuring Performance: Lessons learned/Action Items

The sticker board was a very large and colorful display that was meant to reengage guests after they had reviewed the project boards and PPP information. It was user friendly, had simple instructions and was fun. At the Harrison County open—house it became the center piece of the event and was the hub of conversation and roadway improvement discussions.

In each of the three events it was a success and people enjoyed participating. Many guest commented that it was harder than it looked by making them choose only their top three priorities from the listed options.

We will continue to take the board into the public throughout the year to gain valuable insight of the true priorities and values of the region's community members. The results will be available to MPO members and jurisdiction to help them in selecting future projects.

The stickered sheets tallied above are saved in the TIP 2011 participation folder. Copies can be requested from Stephanie Planchich, the Public Involvement Coordinator; splanchich@grpc.com



Open-House Event Photos

Harrison County: 11/8/2011



Jackson County: 11/9/2011



Hancock County: 11/10/2011



Project Suggestion Card

Date: _____ Location: _____

Project City: _____

Project Street: _____

Was this the project that you came to the open-house to discuss?	Yes - No, which one _____
--	---------------------------

What is your connection to the project area? Live, work, drive through, etc.	
--	--

What is your desired outcome? What result would you like to see? What do you want it to look like?	
--	--

Do you feel that the proposed solution will support your desired outcome?	Yes - No, why _____

What would make you unhappy at the end of the project? List your concerns	There is more room for comments on the back of this page
---	--

THANK YOU for your feedback. Every comment will be recorded and addressed.

Please fill in the method that will best keep you informed about these projects and other participation opportunities.

Phone:	
Email:	
Mailing address:	
Facebook Updates:	http://www.facebook.com/pages/Gulf-Regional-Planning-Commission
GRPC website:	www.grpc.com

