

Gulf Regional
Planning Commission

***Beachview Drive /
Ocean Springs Middle School
Study***

UPWP Task E

FINAL REPORT

Prepared By:



200 North Congress Street, Suite 600
Jackson, Mississippi 39201

March 30, 2009

TABLE OF CONTENTS

1.	Introduction	1
2.	Existing Conditions	2
2.1	Project Area Characteristics	2
2.2	Project Area Roadway and Intersection Inventory	2
2.3	Project Area Sidewalk Inventory	2
2.4	School Zone Traffic Control Inventory.....	4
2.5	Problem Areas Identified.....	4
2.5.1	Old Spanish Trail @ Hanshaw Rd./N 8th St. Intersection.....	5
2.5.2	Old Spanish Trail @ Beachview Dr. Intersection	5
2.5.3	Old Spanish Trail (between Canebrake Subdivision and Fountainbleau Rd.)	6
2.5.4	Beachview Drive	7
2.5.5	N 8th Street	8
3.	Data Collection	
3.1	Existing Traffic Volume Data	9
3.1.1	Manual 12-Hour Turning Movement Counts	9
3.1.2	Tube Counts.....	9
3.1.3	School Pedestrian and Bus Traffic Volumes	10
3.2	Crash Data	10
4.	Operation Analysis Methodology	13
4.1	Traffic Signal Warrants Analyses	13
4.2	Intersection Delay and Level of Service (LOS) Analysis	13
4.3	Travel Time Analysis	14
4.4	Crash Data Analysis	14
5.	Existing Conditions Analysis.....	17
5.1	Traffic Signal Warrant Analysis Results	17
5.1.1	Old Spanish Trail @ Hanshaw Rd.	17
5.1.2	Old Spanish Trail @ Beachview Dr.	17



5.2 Existing Intersection Delay and Level of Service (LOS) Analyses Results	17
5.2.1 Old Spanish Trail @ Hanshaw Rd.	17
5.2.2 Old Spanish Trail @ Beachview Dr.	18
5.3 Existing Travel Time Analyses Results	19
6. Alternative Scenarios	20
6.1 Alternate Scenario 1	20
6.2 Alternate Scenario 2	20
6.3 Alternate Scenario 3	23
6.4 Alternate Scenario 4	23
6.5 Alternate Scenario 5	23
6.6 Alternate Scenario 6	23
7. Alternative Scenarios Analyses	29
7.1 Alternative Scenarios Delay and Level of Service (LOS) Analyses Results.....	29
7.1.1 Alternate Scenario 2	29
7.1.2 Alternate Scenario 3	31
7.1.3 Alternate Scenario 4	32
7.1.4 Alternate Scenario 5	36
7.1.5 Alternate Scenario 6	37
7.2 Alternative Scenarios Travel Time Analyses Results	40
7.3 Summary of Results.....	42
8. Alternative Scenario Cost Estimates	42
9. Conclusions and Recommendations	42
10. Public Input	42

APPENDIX

- A – Traffic Volume Data
- B – Traffic Signal Warrant Analysis and Definition
- C – Delay and Level of Service (LOS) Analysis
- D – Cost Estimates
- E – Public Involvement

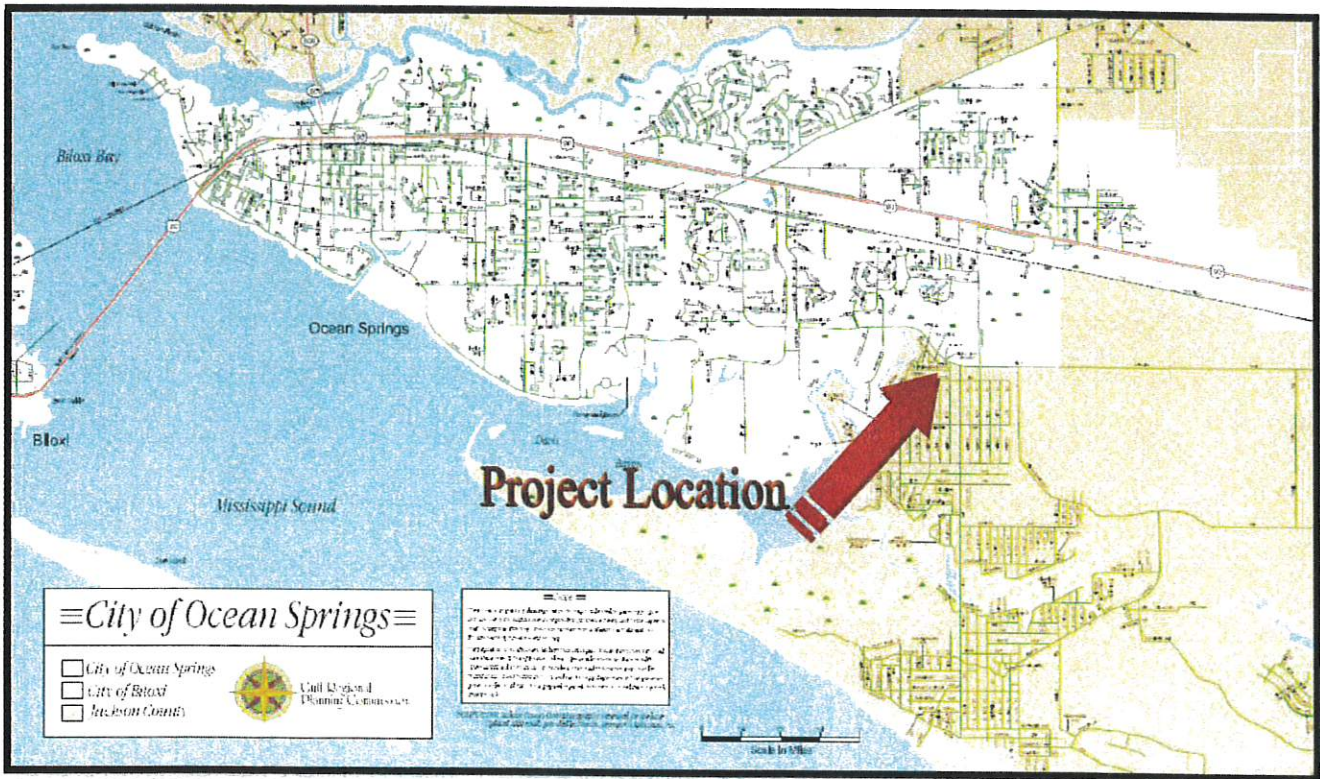
1. INTRODUCTION

At the request of the Gulf Regional Planning Commission (GRPC) and associated partners, Jackson County and the City of Ocean Springs, ABMB Engineers, Inc. has conducted a traffic and pedestrian/bicycle study in the Gulf Park Estates area near Ocean Springs Middle School. **Figure 1** shows the general location of this project. The primary goals of this project are to increase pedestrian/bicycle usage, improve pedestrian/bicycle safety, reduce vehicle traffic speed, and reduce vehicle traffic delay; then evaluate and recommend methods to attain these goals. In addition, the intersections of Old Spanish Trail @ Beachview Dr. and Old Spanish Trail @ Hanshaw Rd./N 8th St. are congested and experience significant traffic delays, particularly during school peak hours. Improvements to these intersections will also be evaluated.

The following objectives for this project have been identified:

- To improve vehicle traffic flow throughout the project study area.
- To promote pedestrian and bicycle mobility and safety to and from school and throughout the Gulf Park Estates neighborhood.
- To enhance the aesthetics of the transportation facilities in the project study area.

Figure 1 – Project Location



Source: GRPC, 2000