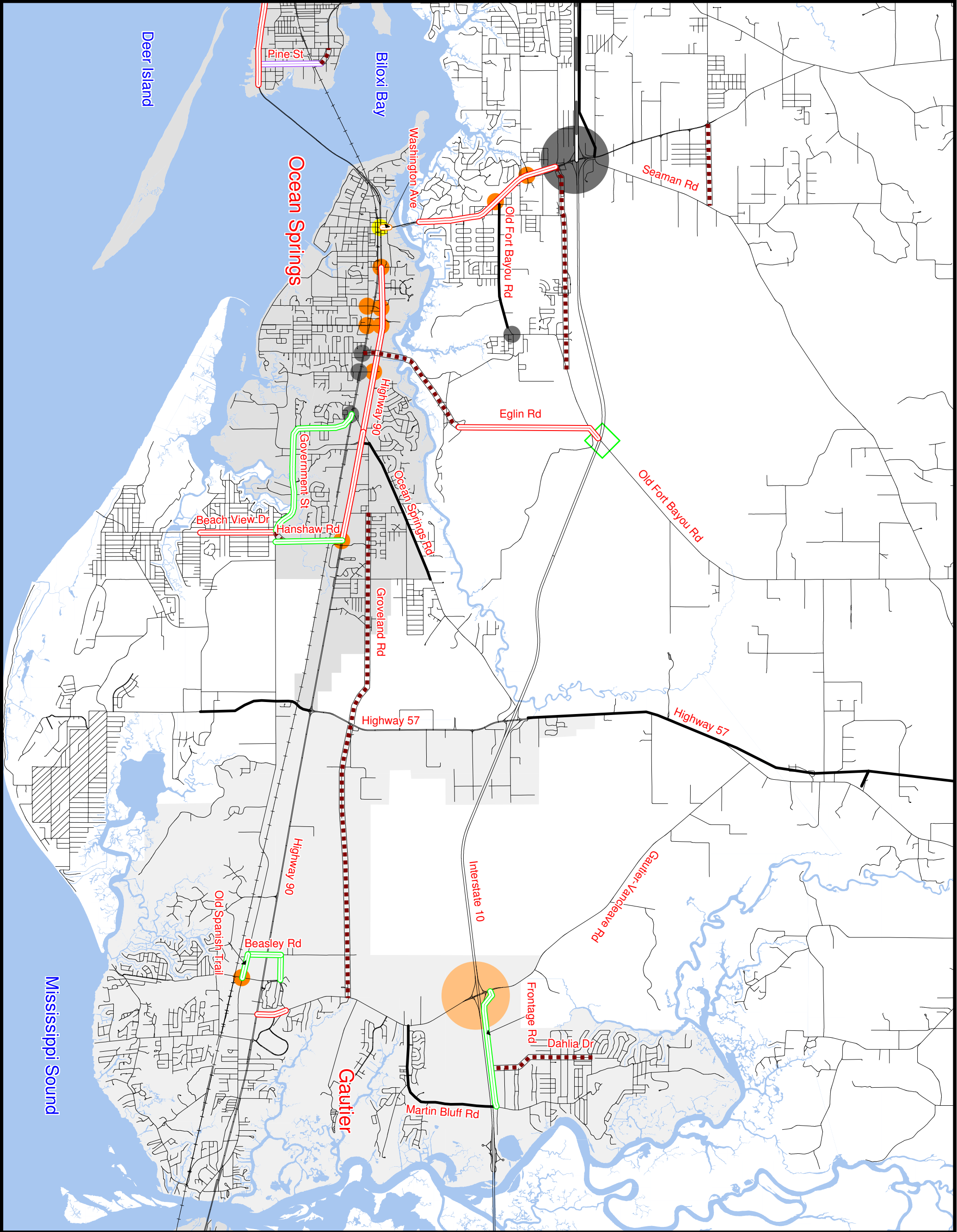


# 2035 Staged Improvement Program



## Legend

- Committed Interchange
- Committed Intersection Improvements
- Intersection Improvement
- New Interchange
- Minor Intersection Improvements
- Roadway Widening
- Corridor Reconstruction - CTL
- Corridor Reconstruction, Operations & Channelization
- HOV Lanes
- New Roadway
- Reconstruction and Access Management
- Committed Corridors

- Planned Park and Ride
- Existing Park and Ride



Figure:13.4