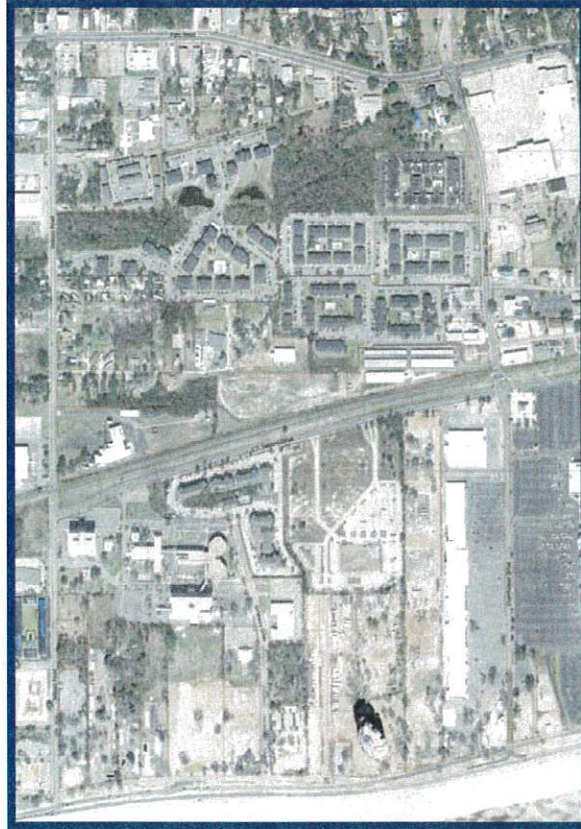

West Biloxi Circulation Study



Final Report
June 2012

Prepared by:



Gulf Regional
Planning Commission



TABLE OF CONTENTS

Section.....	Page No.
Section 1 Introduction	1 - 1
Figure 1.1 Project Location Map.....	1 - 1
Section 2 Existing Conditions.....	2 - 1
2.1 U.S. Highway 90 (Beach Boulevard).....	2 - 1
2.2 Highway 90 Service Road.....	2 - 1
2.3 Debuys Road	2 - 1
Figure 2.1 Existing Conditions	2 - 2
Figure 2.2 Existing Conditions	2 - 3
2.4 C.T. Switzer Drive	2 - 4
2.5 Pass Road.....	2 - 4
2.6 Eisenhower Drive	2 - 4
Section 3 Evaluation of Existing Conditions	3 - 1
3.1 Existing Traffic Volumes.....	3 - 1
Figure 3.1 Existing Peak Hour Volumes.....	3 - 2
3.2 Basis of Analysis	3 - 3
3.3 Highway 90 and Debuys Road.....	3 - 3
Figure 3.2 Existing Intersection Level-of-Service	3 - 3
3.4 Highway 90 and Eisenhower Drive	3 - 4
Figure 3.3 Existing Intersection Level-of-Service	3 - 4
3.5 Eisenhower Drive and C.T. Switzer Drive	3 - 4
Figure 3.4 Existing Intersection Level-of-Service	3 - 4
3.6 Eisenhower Drive and Rue Petit Bois	3 - 5
Figure 3.5 Existing Intersection Level-of-Service	3 - 5
3.7 Pass Road and Eisenhower Drive	3 - 5
Figure 3.6 Existing Intersection Level-of-Service	3 - 6
3.8 Pass Road and Debuys Road.....	3 - 6
Figure 3.7 Existing Intersection Level-of-Service	3 - 6
3.9 Debuys Road and C.T. Switzer Drive	3 - 7
Figure 3.8 Existing Intersection Level-of-Service	3 - 7
Section 4 Proposed Development	4 - 1
4.1 Proposed Development.....	4 - 1
4.2 Trip Generation	4 - 1
Table 4.1 Trip Generation.....	4 - 2
Figure 4.2 Trip Distribution.....	4 - 3
4.3 Non-Site Traffic Forecast	4 - 4

Table 4.2	Historical Daily Traffic Volumes	4 - 4
4.4	Year 2012 Total Traffic.....	4 - 4
Figure 4.3	Year 2012 Total Traffic Volumes	4 - 5
4.5	Year 2012 Traffic Analysis	4 - 6
Table 4.3	Year 2012 Total Traffic Level-of-Service	4 - 6
4.6	Year 2030 Traffic Analysis	4 - 6
Figure 4.4	Year 2030 Total Traffic Volumes	4 - 7
Table 4.4	Year 2030 Total Traffic Level-of-Service	4 - 8
Section 5	Recommendations and Conclusions	5 - 1
5.1	Eisenhower Drive	5 - 1
Figure 5.1	Typical Section for Eisenhower	5 - 1
Table 5.1	Estimated Construction Cost	5 - 2
Table 5.2	Estimated Construction Cost	5 - 3
Figure 5.2	Eisenhower Drive – Long Term Improvements	5 - 4
Figure 5.3	Eisenhower Drive – Long Term Improvements	5 - 5
Figure 5.4	Eisenhower Drive – Long Term Improvements	5 - 6
5.2	Eisenhower Drive and Pass Road Intersection.....	5 - 6
Figure 5.5	Proposed Long Term Improvements	5 - 7
Table 5.3	2030 Level-of-Service	5 - 8
Table 5.4	Estimated Construction Cost	5 - 8
5.3	Debuys Road	5 - 8
Table 5.5	Estimated Construction Cost	5 - 9
Figure 5.6	Long Term Improvements.....	5 - 10
Table 5.6	2030 Level-of-Service	5 - 10
Table 5.7	Estimated Construction Cost	5 - 11
5.4	Debuys Road and C.T. Switzer Drive Intersection.....	5 - 10
5.5	C.T. Switzer Drive	5 - 11
Figure 5.7	Typical Section – Bus Stop on C.T. Switzer Drive.....	5 - 12
Table 5.8	Estimated Construction Cost	5 - 13
Figure 5.8	C.T. Switzer Drive.....	5 - 14
Table 5.9	Estimated Construction Cost	5 - 14
5.6	Gateway Drive.....	5 - 15
Table 5.10	Estimated Construction Cost	5 - 15
Figure 5.9	Gateway Drive	5 - 16

Appendix

Year 2011 Existing Traffic Volumes

Peak Hour Volumes and Trip Distribution

Year 2011 Analysis

Year 2012 Analysis

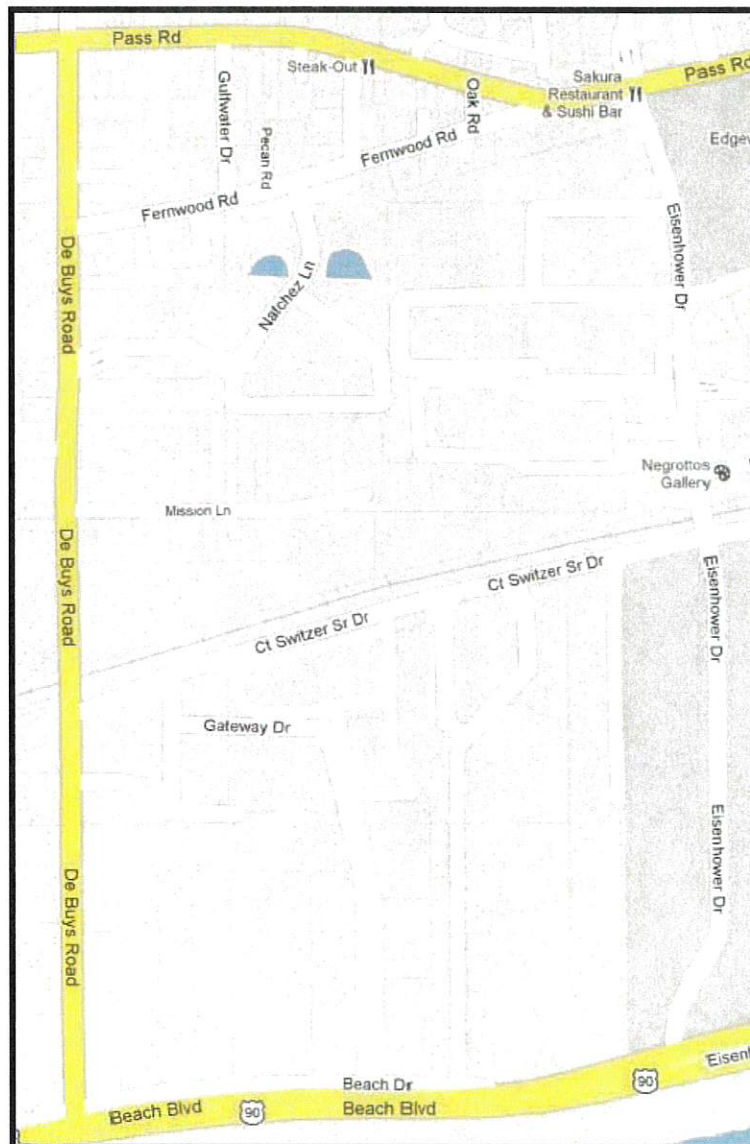
Year 2030 Analysis

Year 2030 Analysis – Proposed Improvements

Section 1 Introduction

This report summarizes the findings of the circulation analysis performed by Neel-Schaffer, Inc. as requested by the Gulf Regional Planning Commission (GRPC) and the City of Biloxi for the West Biloxi area being impacted by Walmart's relocation. The area is bounded by Pass Road to the north, U.S. Highway 90 to the south, Debuys Road to the west, and Eisenhower Drive to the east in Biloxi, Mississippi.

Figure 1.1 – Project Location Map



The purpose of this analysis is to review the traffic impact study completed for Walmart's development, estimate the trip generation potential for other known developments in the area, and evaluate the impact of the site traffic on adjacent roadways and intersections. Based on these impacts, recommended improvements were evaluated to mitigate traffic concerns as they relate to the site developments.