



FY 2017-2020
Mississippi Gulf Coast
Metropolitan Planning Organization

Public Review and Comment Period for Draft: July 3-August 19, 2016



Mississippi Gulf Coast Transportation Improvement Program

Introduction

Mississippi Gulf Coast MPO

The Metropolitan Planning Organization (MPO) is a federally mandated planning body responsible for transportation planning in the Mississippi Gulf Coast urbanized areas. The Gulf Regional Planning Commission (GRPC) serves as the MPO for the Mississippi Gulf Coast, coordinating transportation programs for all jurisdictions within the urbanized areas of Hancock, Harrison, and Jackson Counties. It is the lead agency responsible for developing and administering plans and programs to maintain eligibility and receive federal funds for the transportation systems in the Mississippi Gulf Coast area. The primary mission of the MPO is to develop and maintain a transportation planning process that is compliant with federal and state requirements, and supports the development and enhancement of sustainable multimodal facilities, programs and systems in the Mississippi Gulf Coast area. The Transportation Improvement Program (TIP) is one of the most important products of the MPO's planning process.

What is the TIP?

The Transportation Improvement Program (TIP) is a financially constrained program developed through an on-going planning process for addressing short-term transportation priorities that are consistent with the MS Gulf Coast's Metropolitan Transportation Plan (MTP), the long-range transportation plan for our region.

The MPO, in cooperation with the State(s) and any affected public transportation operator(s), shall develop a TIP for the metropolitan planning area. The TIP shall cover a period of no less than four years, be updated at least every four years, and be approved by the MPO and the Governor. However, if the TIP covers more than four years, the FHWA and the FTA will consider the projects in the additional years as informational. The TIP may be updated more frequently, but the cycle for updating the TIP must be compatible with the STIP development and approval process. (23 CFR 450.324)

The TIP is developed and approved by the MPO and is included, without modification, in the Statewide Transportation Improvement Program (STIP) following approval by the Governor. The TIP can be modified at any time subject to approval of the MPO technical and policy committees.

MPO STP funding

The TIP includes federal funding for projects provided through the Surface Transportation Program (STP) and is administered through the Federal Highway Administration (FHWA). These funds are apportioned to each state's urbanized area through the Metropolitan Planning Organization (MPO). A formula is developed to apportion these funds to each state based on that state's urbanized area population as a ratio of the nation's total urbanized area population. With the exception of certain safety projects, TIP projects are generally funded using an 80% federal/20% local ratio. For a project to be considered for inclusion in the TIP, a commitment from the sponsoring agency to provide the required local matching funds is required.

Advance Construction

The MPO uses a technique which allows a state to initiate a project using non-Federal funds while preserving eligibility for future Federal-aid funds. Eligibility means that FHWA has determined that the project technically qualifies for Federal-aid although no present or future Federal funds are committed to the project. After an advance construction project is authorized, the state may convert the project to regular Federal-aid funding provided Federal funds are made available for the project.

Public transportation operators

The TIP includes projects funded by the Federal Transit Administration (FTA) including FTA Discretionary Grant Program (Section 5309), FTA Job Access/Reverse Commute Program (5316), FTA New Freedom Program (5317), FTA Rural Transit Program (Section 5311), FTA Transportation Planning Program (Section 5303), Handicapped Transportation Program (Section 5310) FTA Elderly.

MDOT projects

Although not specifically listed in the Gulf Coast TIP, the Mississippi Department of Transportation (MDOT) must get approval from the MPO regarding the allocation of funds to projects in the Gulf Coast urbanized area from sources such as: Interstate Maintenance, Bridge Replacement, National Highway System, Surface Transportation Program, and others. More information on these funding sources can be found in MDOT's Statewide Transportation Program.

Safety projects

The Mississippi Gulf Coast MPO will set aside 10% of the gulf coast's Surface Transportation Program (STP) funds for projects to enhance the safe mobility of all modes of transportation on the Mississippi Gulf Coast. The Federal share payable on account of any project for traffic control signalization, maintaining minimum levels of retroreflectivity of highway signs or pavement markings, traffic circles (also known as "roundabouts"), safety rest areas, pavement marking, shoulder and centerline rumble strips and stripes, commuter carpooling and vanpooling, rail-highway crossing closure, or installation of traffic signs, traffic lights, guardrails, impact attenuators, concrete barrier endtreatments, breakaway utility poles, or priority control systems for emergency vehicles or transit vehicles at signalized intersections may amount to 100 percent of the cost of construction of such projects; except that not more than 10 percent of all sums apportioned for all the Federal-aid programs for any fiscal year in acc

TAP projects

The Transportation Alternatives Program (TAP) is eligible for funding under the Surface Transportation Program (STP). The TAP was established under the Moving Ahead for Progress in the 21st Century (MAP-21) of 2012 and replaces the Transportation Enhancement Program (TEP), Safe Routes to School Program (SRSP), as well as the Recreational Trails Program (RTP).

Bicycle, pedestrian and transit projects

The Mississippi Gulf Coast MPO will set aside 10% of the gulf coast's Surface Transportation Program (STP) funds for projects to improve bicycle, pedestrian and transit accessibility and mobility in the region. An independent walkway project must be constructed on highway right-of-way or easement. Independent walkway projects are constructed separately from a Federal-aid highway construction project.

MPO studies/projects

The Mississippi Gulf Coast MPO will set aside \$400,000 in STP funds annually for the purpose of developing and implementing projects that directly support the MPO goals and objectives. Each year a project (or projects) will be selected by GRPC for funding through this program. Project(s) are based on needs identified through the agency's transportation planning process toward the provision of an efficient, safe and accessible transportation system for all modes. Projects considered for funding through this program include: various intersection improvement projects that enhance traffic flow and/or safety; projects that enhance transportation modal options (bike/pedestrian, transit, etc.); projects that improve roadway safety; intersection analyses; corridor studies; safety audits; and others.

TIP development process

The TIP is updated every two years in order to allocate projected available funding to projects. Every six months GRPC will initiate an amendment and evaluation process to consider existing project funding increases and the addition of "new" projects funded with gulf coast STP funds based on the availability of existing funds in the financially constrained TIP. Recommendations are made by the sub-committee of MPO's Technical Coordinating Committee (TCC) and the full TCC and then adoption by the Transportation Policy Committee (TPC). Then the TIP is submitted to MDOT for approval and then Federal Highway Administration (FHWA) and Federal Transit Administration (FTA) shall jointly find that each metropolitan TIP is consistent with the metropolitan transportation plan produced by the continuing and comprehensive transportation process carried on cooperatively by the MPO.

Public review

As required in CFR 450.316, The MPO maintains a Public Participation Plan (PPP) that defines a process for providing interested parties with a reasonable opportunity to comment on the proposed TIP including at least one public meeting.

For more information and when and how to participate in the public review and comment period visit www.grpc.com or contact Stephanie Plancich at splancich@grpc.com by calling 228-864-1167. You may also mail or make comments at the GRPC offices located at 1635-G Popps Ferry Road, Biloxi MS, 39532.



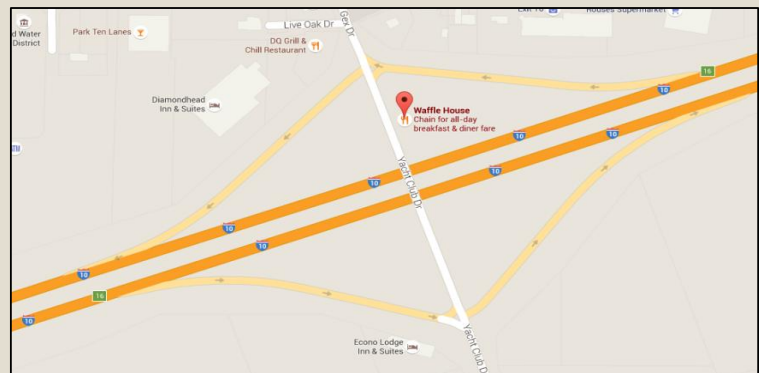
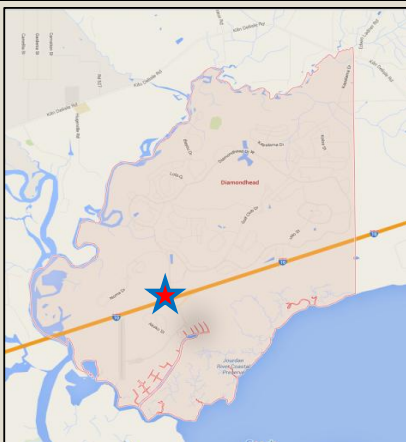
Mississippi Gulf Coast Transportation
 Improvement Program Estimated Funding:
 FY2017-2020

Estimated Available Funds 2017				
Funding Source	Carryover	Federal	Local	Total
STP Projects	\$18,103,989	\$5,171,690	\$1,292,922	\$6,464,612
Safety Projects		\$171,256	\$0	\$171,256
Bicycle, Pedestrian and Transit Projects	\$108,566	\$500,000	\$152,141	\$760,707
MPO Studies/Projects	\$560,209	\$400,000	\$240,052	\$1,200,261
TAP Projects	\$1,194,552	\$310,730	\$376,320	\$1,881,602
Estimated Available Funds 2018				
Funding Source	Carryover	Federal	Local	Total
STP Projects		\$5,260,586	\$1,315,146	\$6,575,732
Safety Projects		\$500,000	\$0	\$500,000
Bicycle, Pedestrian and Transit Projects		\$500,000	\$125,000	\$625,000
MPO Studies/Projects		\$400,000	\$100,000	\$500,000
TAP Projects		\$310,730	\$77,682	\$388,412
Estimated Available Funds 2019				
Funding Source	Carryover	Federal	Local	Total
STP Projects		\$5,351,260	\$1,337,815	\$6,689,075
Safety Projects		\$500,000	\$0	\$500,000
Bicycle, Pedestrian and Transit Projects		\$500,000	\$125,000	\$625,000
MPO Studies/Projects		\$400,000	\$100,000	\$500,000
TAP Projects		\$310,730	\$77,682	\$388,412
Estimated Available Funds 2020				
Funding Source	Carryover	Federal	Local	Total
STP Projects		\$5,443,748	\$1,360,937	\$6,804,685
Safety Projects		\$500,000	\$0	\$500,000
Bicycle, Pedestrian and Transit Projects		\$500,000	\$125,000	\$625,000
MPO Studies/Projects		\$400,000	\$100,000	\$500,000
TAP Projects		\$310,730	\$77,682	\$388,412

Mississippi Gulf Coast Metropolitan Planning Organization
2017-2020 Transportation Improvement Program (TIP)

County	Hancock	Agency	Diamondhead	Project Cost	\$500,000	Project #	2017DH17
Improvement Type	Interchange Improvements					TIP Year	2017
Route/Category	I-10 on/off ramps					Miles	N/A
Termini	Gex Dr. and Yacht Club Dr.						
Project Description	Install lighting to illuminate I-10 interchange						

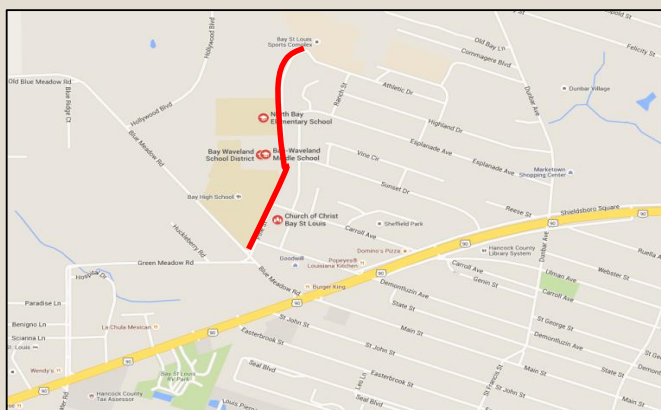
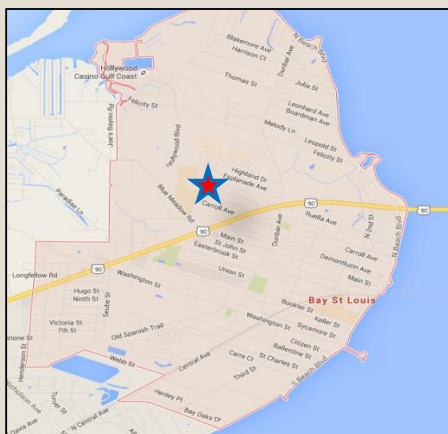
Fiscal Year	Funding Source	Project Phase	Federal Funds	Local Match	Total Cost
2017	STP-TMA	CON	\$400,000	\$100,000	\$500,000

[illegible]

Mississippi Gulf Coast Metropolitan Planning Organization
2017-2020 Transportation Improvement Program (TIP)

County	Hancock	Agency	Bay-Wave SD	Project Cost	\$366,000	Project #	2017BW17
Improvement Type	Sidewalks (Bay-Waveland School District: Bay St Louis)					TIP Year	2017
Route/Category	Pine Street					Length	.55 mi.
Termini	Blue Meadow Road to Athletic Drive						
Project Description	Add new sidewalks from Sports complex past North Bay Elementary and Bay High School						

Fiscal Year	Funding Source	Project Phase	Federal Funds	Local Match	Total Cost
2017	TAP	CON	\$244,000	\$122,000	\$366,000

[illegible]

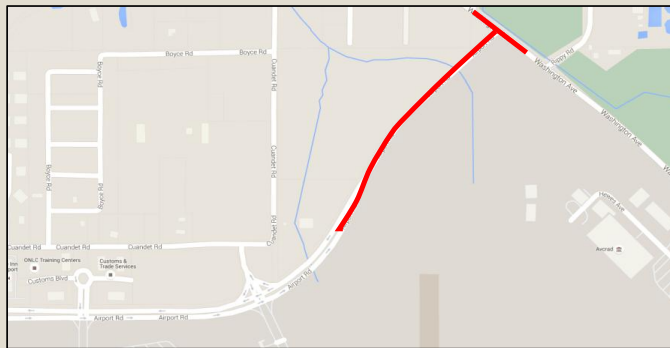
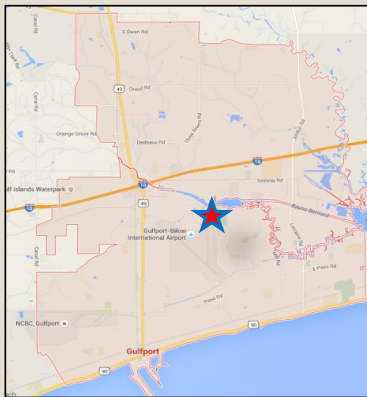
Mississippi Gulf Coast Metropolitan Planning Organization 2017-2020 Transportation Improvement Program (TIP)

County	Harrison	Agency	Gulfport	Project Cost	\$700,000	Project #	2015GP17
Improvement Type	Capacity					TIP Year	2017
Route/Category	Airport Road					Length	.25 mi.
Termini	Washington Ave to the existing 4 lane segment						
Project Description	Widen Airport Road from 2 to 4 lanes and build roundabout at Washington Ave.						

Fiscal Year	Funding Source	Project Phase	Federal Funds	Local Match	Total Cost
2017	STP-TMA	CON	\$550,000	\$150,000	\$700,000



Action History	Type	Date	Remarks:
Added to TIP	Amend	6/25/2015	\$550,000 STP



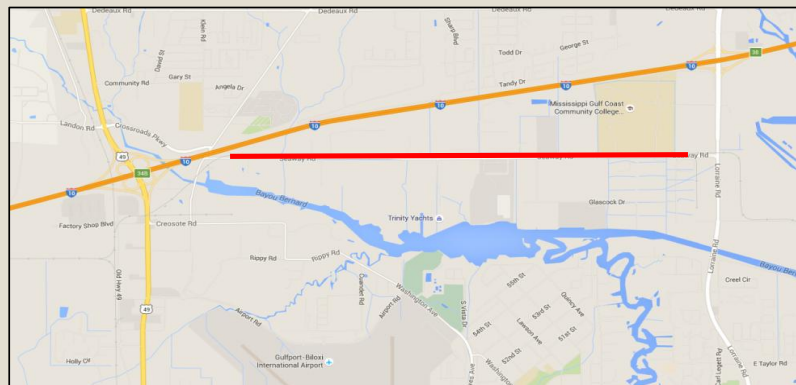
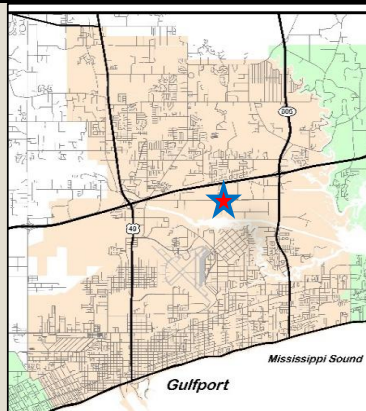
Mississippi Gulf Coast Metropolitan Planning Organization 2017-2020 Transportation Improvement Program (TIP)

County	Harrison	Agency	Gulfport	Project Cost	\$985,380	Project #	2017GP17
Improvement Type	Add multi-use pathway					TIP Year	2017
Route/Category	Seaway Road					Length	3.3 mi.
Termini	Three Rivers to Hwy 605						
Project Description	Install multi-use pathway on southside the length of Seaway Road						

Fiscal Year	Funding Source	Project Phase	Federal Funds	Local Match	Total Cost
2017	TAP	CON	\$788,304	\$197,076	\$985,380



Action History	Type	Date	Remarks:
Added to TIP	Amend	8/25/2016	\$788,304 STP



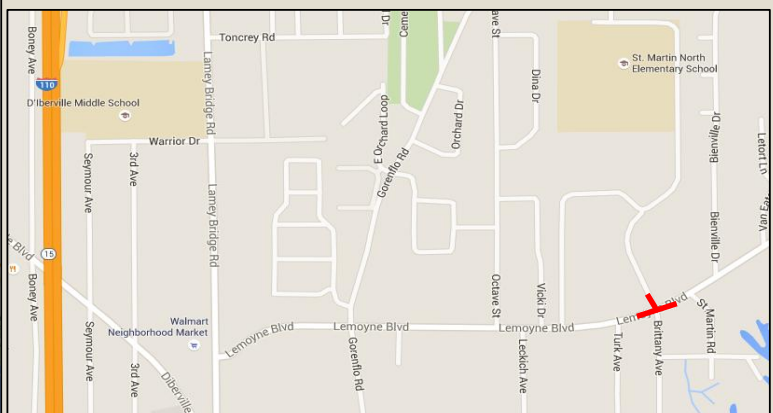
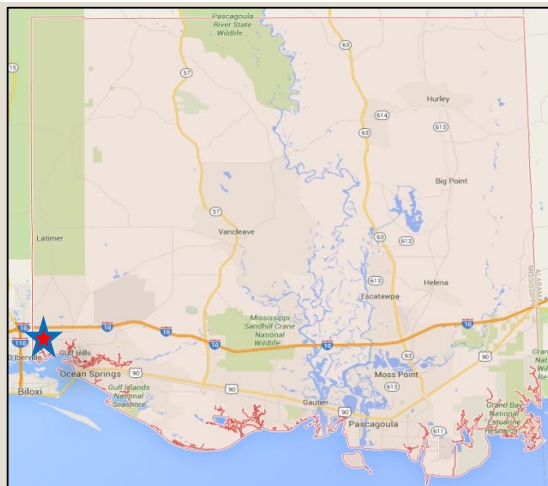
Mississippi Gulf Coast Metropolitan Planning Organization 2017-2020 Transportation Improvement Program (TIP)

County	Harrison	Agency	Biloxi	Project Cost	\$936,250	Project #	2007BIL12
Improvement Type	Bridge Improvement					TIP Year	2017
Route/Category	Popps Ferry Road					Length	.3 mi.
Termini	Length of Bridge						
Project Description	Submarine cable installation						

Fiscal Year	Funding Source	Project Phase	Federal Funds	Local Match	Total Cost
2017	STP-TMA	CON	\$749,000	\$187,250	\$936,250



Action History	Type	Date	Remarks:
Added to TIP	Amend	5/31/2007	\$560,000 STP
Change CON FY	Mod	10/1/2012	Move from FY12 to FY13
Increase Funding	Amend	3/28/2013	Increase STP to \$749,000
Change CON FY	Mod	10/12/2015	Change to FY16
Change CON FY	Mod	8/25/2016	Change to FY17



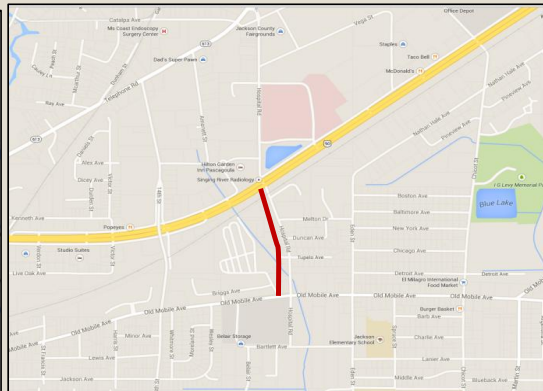
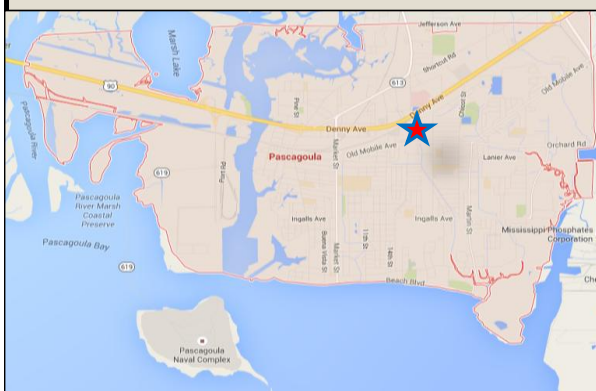
Mississippi Gulf Coast Metropolitan Planning Organization 2017-2020 Transportation Improvement Program (TIP)

County	Jackson	Agency	Pascagoula	Project Cost	\$2,866,521	Project #	2008PG15
Improvement Type	Reconstruction					TIP Year	2017
Route/Category	Hospital Road					Length	.5 mi.
Termini	Old Mobile Hwy to Hwy 90						
Project Description	Add a turn lane to existing 2-lane road, add sidewalks, bike lanes, landscaping and lighting, bridge and intersection improvements						

Fiscal Year	Funding Source	Project Phase	Federal Funds	Local Match	Total Cost
2017	STP-Non-Urb	CON	\$2,293,217	\$573,304	\$2,866,521



Action History	Type	Date	Remarks:
Project Added to TIP	Amend	12/11/2008	\$494,400 STP
Increase Funding	Amend	10/24/2013	Add \$1,798,817 STP for total of \$2,293,217 STP
Change CON FY	Mod	9/13/2013	Change From FY15 to FY 16
Split Funding	Mod	10/0/2014	Split funds between FY 17 & FY 18
Change CON FY	Mod	11/0/2015	Move up from FY17/18 to FY16/17
Change CON FY	Mod	8/25/2016	Remove advance construction, full project in 2017



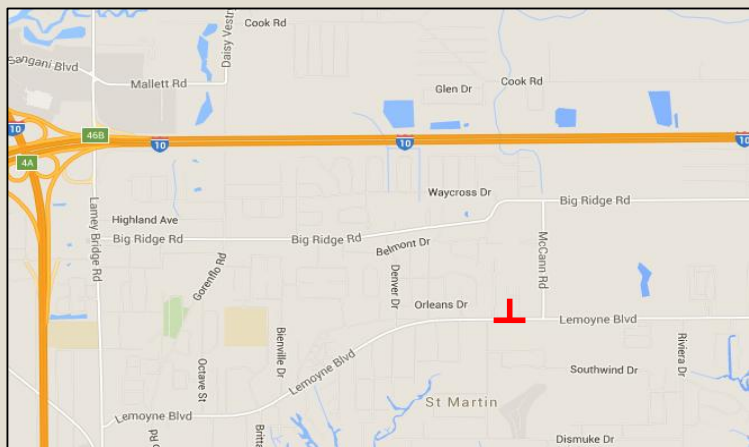
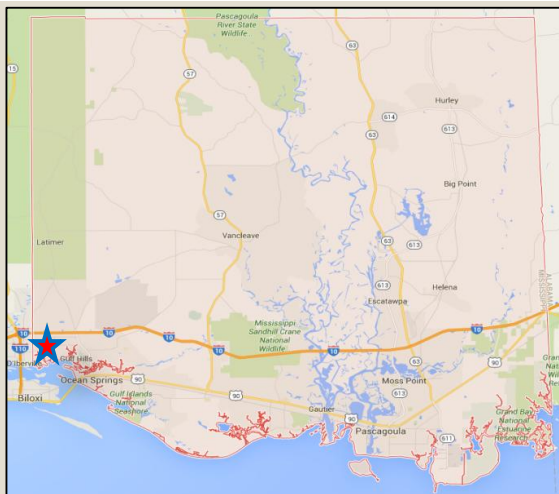
Mississippi Gulf Coast Metropolitan Planning Organization 2017-2020 Transportation Improvement Program (TIP)

County	Jackson	Agency	Jackson Co.	Project Cost	\$450,000	Project #	2017JAX17
Improvement Type	Traffic Signal, Sidewalk					TIP Year	2017
Route/Category	Lemoyne Blvd					Length	N/A
Termini	at McCann Road						
Project Description	Install new traffic signal and upgrade sidewalks/curb ramps at intersection						

Fiscal Year	Funding Source	Project Phase	Federal Funds	Local Match	Total Cost
2017	STP-TMA	CON	\$360,000	\$90,000	\$450,000



Action History	Type	Date	Remarks:
Added to TIP	Amend	8/25/2016	\$360,000 STP



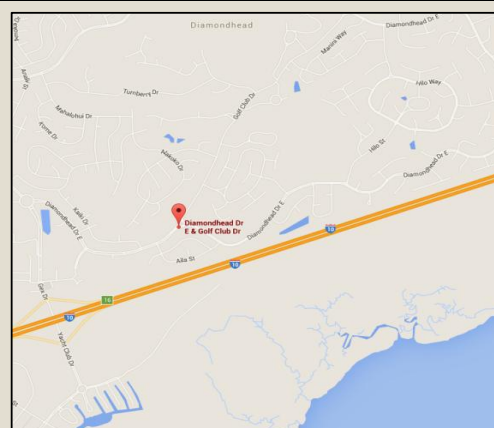
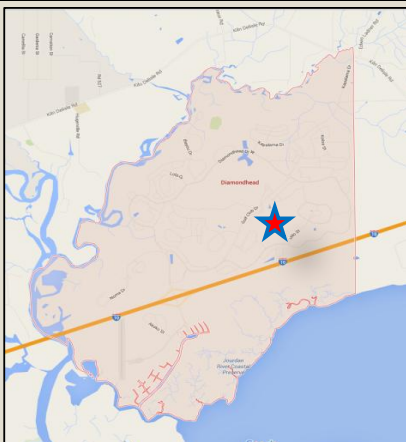
Mississippi Gulf Coast Metropolitan Planning Organization 2017-2020 Transportation Improvement Program (TIP)

County	Hancock	Agency	Diamondhead	Project Cost	\$250,000	Project #	2017DH18
Improvement Type	Intersection Improvement					TIP Year	2018
Route/Category	Golf Club Drive					Length	N/A
Termini	Diamondhead East Drive						
Project Description	Install a roundabout						

Fiscal Year	Funding Source	Project Phase	Federal Funds	Local Match	Total Cost
2018	STP-TMA	CON	\$200,000	\$50,000	\$250,000



Action History	Type	Date	Remarks:
Add Project to TIP	Amend	8/25/2016	\$200,000 STP



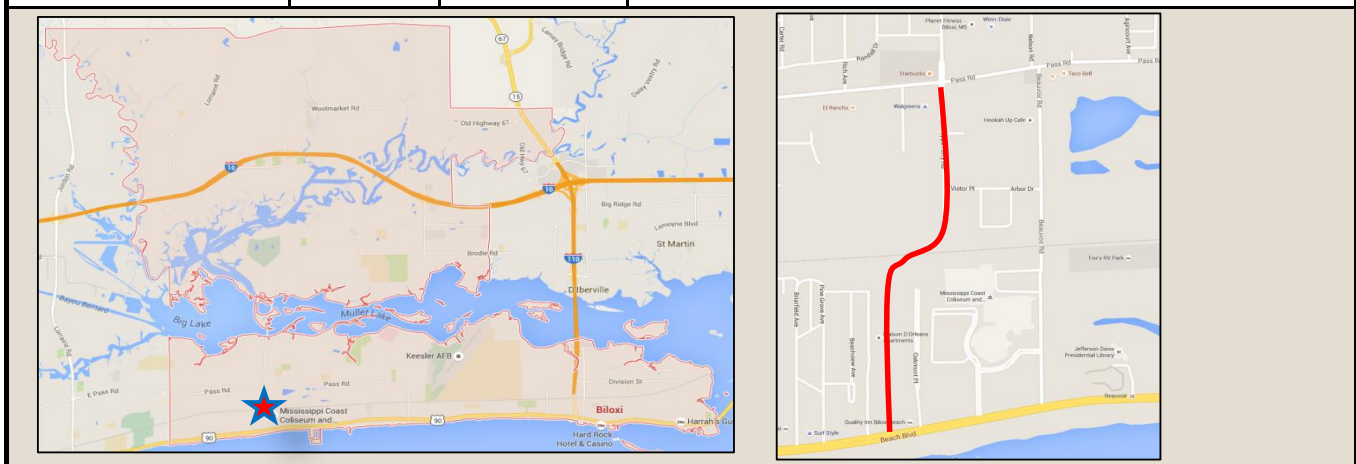
Mississippi Gulf Coast Metropolitan Planning Organization 2017-2020 Transportation Improvement Program (TIP)

County	Harrison	Agency	Biloxi	Project Cost	\$14,887,500	Project #	2007BIL12
Improvement Type	Popps Ferry Road Extension					TIP Year	2018
Route/Category	New and reconstruction					Length	.75 mi.
Termini	Pass Road to US 90						
Project Description	New Roadway						

Fiscal Year	Funding Source	Project Phase	Federal Funds	Local Match	Total Cost
2015	Earmark	ENV	\$550,000	\$137,500	\$687,500
2015	Earmark	Design	\$400,000	\$100,000	\$500,000
2018	Earmark	ROW	\$4,560,000	\$1,140,000	\$5,700,000
2018	Earmark	CON	\$890,000	\$4,406,000	\$5,296,000
2018	STP - TMA	CON	\$2,163,200	\$540,800	\$2,704,000



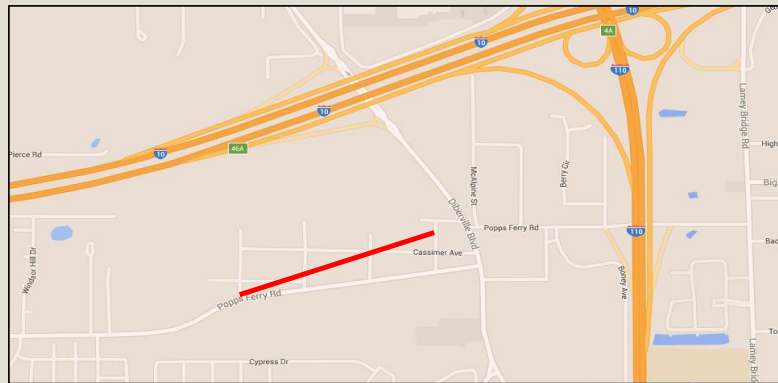
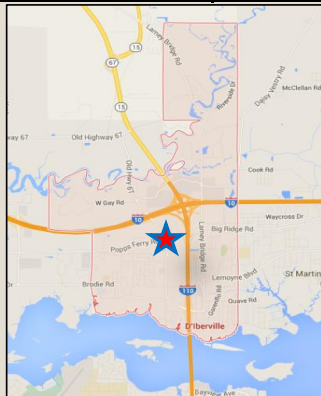
Action History	Type	Date	Remarks:
Project Addition	Amend	11/29/2007	\$2,000,000 STP
Change Termini	Amend	5/7/2011	From "Coliseum to Pass Road" to Pass Road to US 90
Add Earmark	Amend	5/7/2011	ENV-\$550,000(fed) \$137,500(local)/Design \$400,000(fed) \$100,000(local)/ROW \$4,560,000(fed) \$1,140,000(local)/Con \$890,000(fed) \$4,406,000(local)
Add STP funds	Mod	5/7/2011	163200 Administrative Adjustment
Move CON FY	Mod	9/13/2013	Move from FY 2012 to FY 2018
Move CON FY	Mod	10/0/2014	Move from FY 2018 to FY 2019
Move CON FY	Mod	11/0/2015	Move from FY 2019 to FY 2018



Mississippi Gulf Coast Metropolitan Planning Organization
2017-2020 Transportation Improvement Program (TIP)

County	Harrison	Agency	D'Iberville	Project Cost	\$3,673,473	Project #	2017DIB18
Improvement Type	Realignment					TIP Year	2018
Route/Category	Popps Ferry Road					Length	.5 mi.
Termini	Belle St to Galeria Parkway/D'Iberville Blvd						
Project Description	Construct new segment to align with Popps Ferry Road at D'Iberville Blvd/Galleria Parkway						

Fiscal Year	Funding Source	Project Phase	Federal Funds	Local Match	Total Cost
2018	STP-TMA	CON	\$2,938,779	\$734,694	\$3,673,473

[illegible]

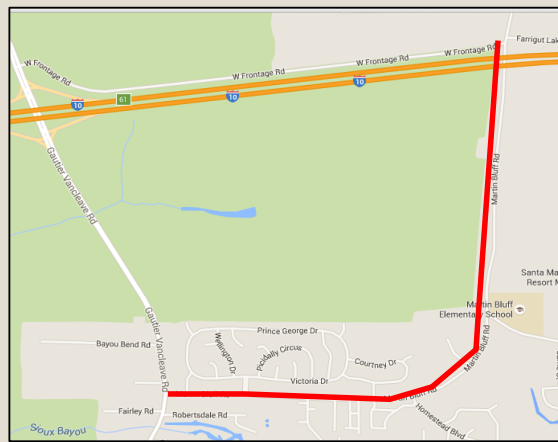
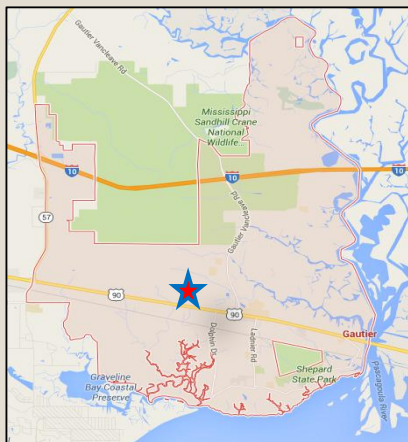
Mississippi Gulf Coast Metropolitan Planning Organization 2017-2020 Transportation Improvement Program (TIP)

County	Jackson	Agency	Gautier	Project Cost		Project #	2010GAU12
Improvement Type	Reconstruction					TIP Year	18/19
Route/Category	Martin Bluff Road					Length	2.1 mi.
Termini	Gautier-Vancleave Road to Frontage Road						
Project Description	Widening, Bike/Ped and Intersection Improvements						

Fiscal Year	Funding Source	Project Phase	Federal Funds	Local Match	Total Cost
2018	STP-Non-Urb	CON	\$1,664,002	\$416,001	\$2,080,003
2019	STP-Non-Urb	AC/CONV	\$1,664,002	\$416,001	\$2,080,003



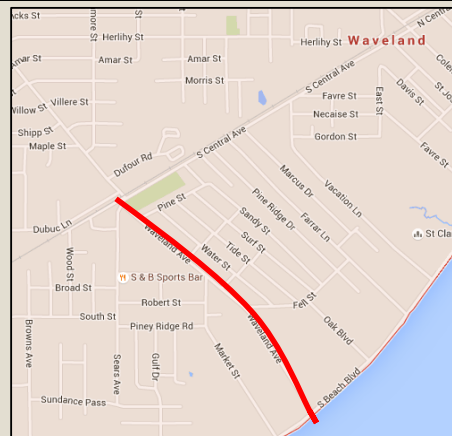
Action History	Type	Date	Remarks:
Project Addition	Amend	12/9/2010	\$936,000 STP
Funding Addition	Amend	12/9/2010	\$1,700,000 earmark
Adjust Year	Mod	2/10/2011	Earmark from 2010-2011/STP from 2011-2012
Change CON FY	Mod	10/1/2012	Move from FY2012 to FY 2013
Change CON FY	Mod	9/13/2013	Move from FY2013 to FY 2016
Increase Funding	Amend	10/24/2013	Add \$2,392,005 STP - Totaling \$3,328,005 STP
Move/Split FY	Mod	10/1/2014	Advance Construction Split between FY16 & FY17
Add ROW Phase	Mod	5/1/2015	Add ROW - \$3,199,682 Earmark
Change CON FY	Mod	11/1/2015	Move from FY 16/17 to FY 17/18
Change CON FY	Mod	8/25/2016	Move from FY 17/18 to FY 18/19



Mississippi Gulf Coast Metropolitan Planning Organization
2017-2020 Transportation Improvement Program (TIP)

County	Hancock	Agency	Waveland	Project Cost	\$1,316,000	Project #	2015WV19
Improvement Type	Sidewalks					TIP Year	2019
Route/Category	Waveland Ave					Length	1.5 mi.
Termini	Hwy 90 to CSX Railroad						
Project Description	5 foot sidewalks, curb ramps and necessary drainage along east and west sides of Waveland Ave.						

Fiscal Year	Funding Source	Project Phase	Federal Funds	Local Match	Total Cost
2019	STP-TMA	CON	\$1,052,800	\$263,200	\$1,316,000

[illegible]

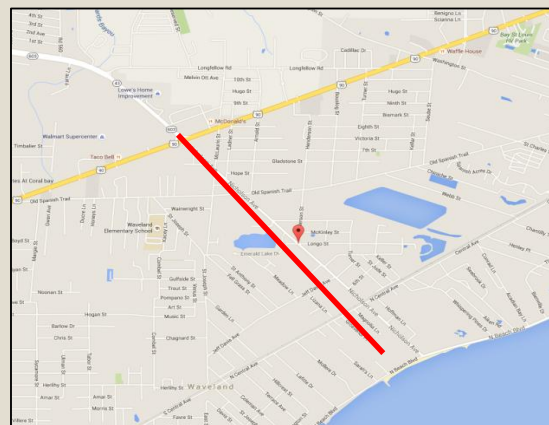
Mississippi Gulf Coast Metropolitan Planning Organization 2017-2020 Transportation Improvement Program (TIP)

County	Hancock	Agency	Waveland	Project Cost	\$1,000,000	Project #	2017WV19
Improvement Type	Overlay and Widening					TIP Year	2019
Route/Category	Nicholson Ave					Length	1.5 mi.
Termini	Hwy 90 to S. Beach Blvd.						
Project Description	Resurfacing and restriping roadway to include widened shoulders for bicycle and pedestrian access						

Fiscal Year	Funding Source	Project Phase	Federal Funds	Local Match	Total Cost
2019	STP-TMA	CON	\$800,000	\$200,000	\$1,000,000



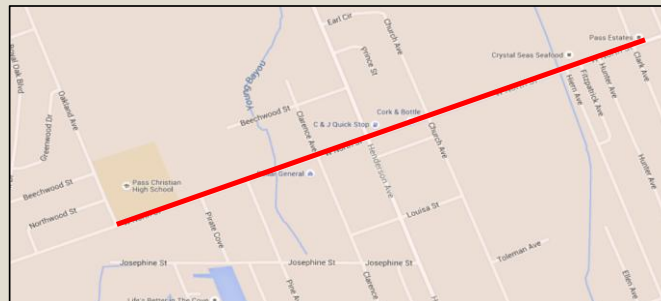
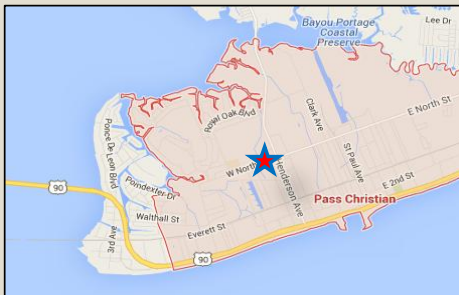
Action History	Type	Date	Remarks:
Add Project to TIP	Amend	8/25/2016	\$800,000 STP



Mississippi Gulf Coast Metropolitan Planning Organization
2017-2020 Transportation Improvement Program (TIP)

County	Harrison	Agency	Pass Christian	Project Cost	\$566,000	Project #	2015PC19
Improvement Type	Sidewalks					TIP Year	2019
Route/Category	North Street					Length	1800 ft
Project Description	Pass Christian High School to Pass Estates						
Project Description	5 foot concrete sidewalk on southside of roadway from fire station to connect with existing sidewalk at Weeping Willow Street						

Fiscal Year	Funding Source	Project Phase	Federal Funds	Local Match	Total Cost
2019	STP - TMA	CON	\$452,800	\$113,200	\$566,000

[illegible]

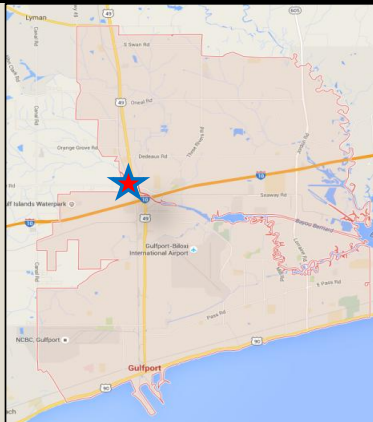
Mississippi Gulf Coast Metropolitan Planning Organization 2017-2020 Transportation Improvement Program (TIP)

County	Harrison	Agency	Gulfport	Project Cost	\$2,760,167	Project #	2015GP19
Improvement Type	Capacity					TIP Year	19/20
Route/Category	Landon Road Ph. 1					Length	.5 mi.
Termini	Hwy 49 to 34th Street						
Project Description	Widen Landon Road from 2 lanes to 4-lane divided w/ bike ped accommodations.						

Fiscal Year	Funding Source	Project Phase	Federal Funds	Local Match	Total Cost
2019	STP-TMA	CON	\$1,000,000	\$250,000	\$1,250,000
2020	STP-TMA	CON	\$1,208,133	\$302,034	\$1,510,167



Action History	Type	Date	Remarks:
Added Project to TIP	Amend	6/25/2015	\$1,000,000 STP
Add CON Funds	Amend	8/25/2016	Add \$1,208,133 STP
Change CON FY	Mod	8/25/2016	Advance Construction FY19 & FY20



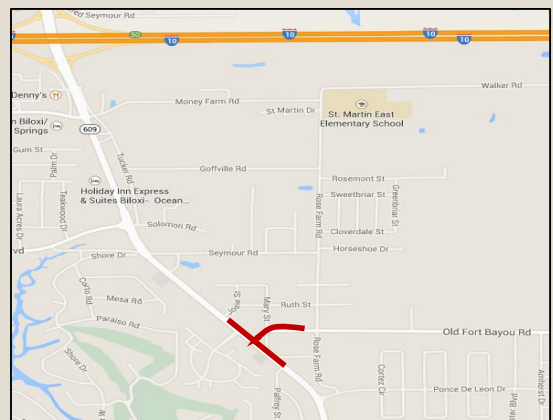
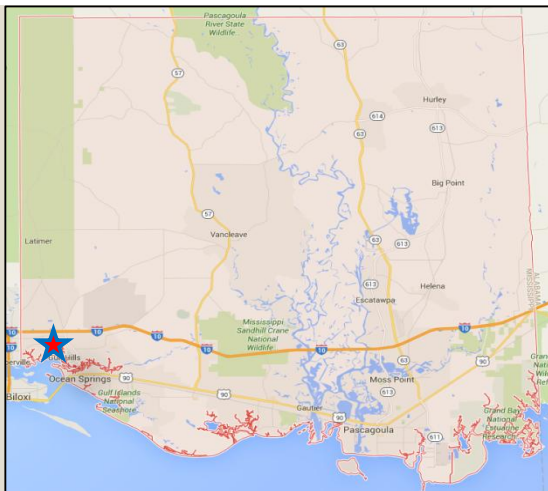
Mississippi Gulf Coast Metropolitan Planning Organization 2017-2020 Transportation Improvement Program (TIP)

County	Jackson	Agency	Jackson Co.	Project Cost	\$1,867,050	Project #	2013JAX17
Improvement Type	Intersection					TIP Year	2019
Route/Category	Hwy 609 and Old Fort Bayou Road					Length	N/A
Termini	Hwy 609 and Old Fort Bayou Road						
Project Description	Intersection realignment to alleviate congestion. Project includes median, striping, turning lanes, pedestrian crossing and signalization.						

Fiscal Year	Funding Source	Project Phase	Federal Funds	Local Match	Total Cost
2019	STP-TMA	CON	\$1,493,640	\$373,410	\$1,867,050



Action History	Type	Date	Remarks:
Added to TIP	Amend	10/24/2013	\$1,493,640 STP
Change Con FY	Mod	10/0/2014	Move from FY17 to FY18
Change Con FY	Mod	11/0/2015	Move from FY18 to FY19



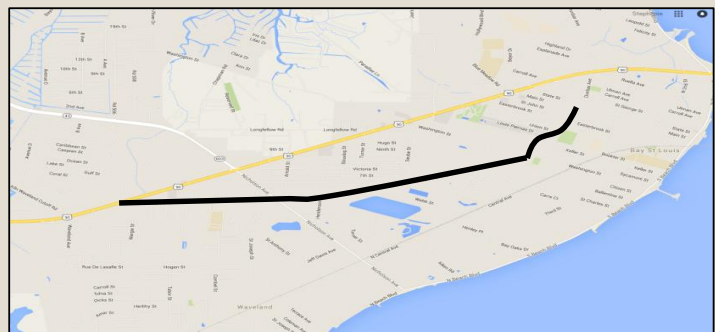
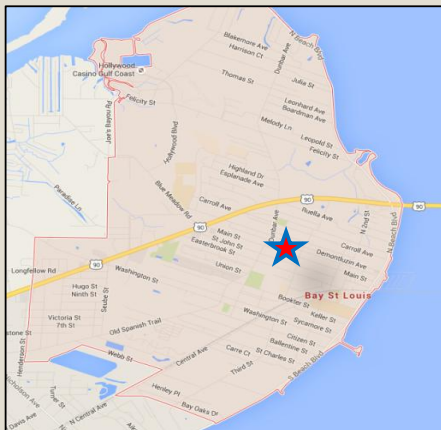
Mississippi Gulf Coast Metropolitan Planning Organization 2017-2020 Transportation Improvement Program (TIP)

County	Hancock	Agency	Bay St Louis	Project Cost	\$800,800	Project #	2013BSL15
Improvement Type	Lighting					TIP Year	2020
Route/Category	Old Spanish Trail					Length	2 mi.
Termini	Main St to Waveland City Limits						
Project Description	Lighting for a pedestrian pathway						

Fiscal Year	Funding Source	Project Phase	Federal Funds	Local Match	Total Cost
2020	STP - TMA	CON	\$640,640	\$160,160	\$800,800



Action History	Type	Date	Remarks:
Added to TIP	Amend	10/24/2013	\$640,640 STP
Change CON FY	Mod	3/10/2014	Change from FY2015 to FY2016
Change CON FY	Mod	10/1/2014	Change from FY2016 to FY2019



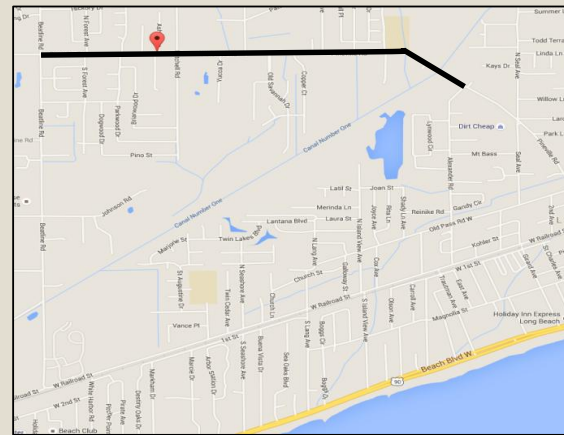
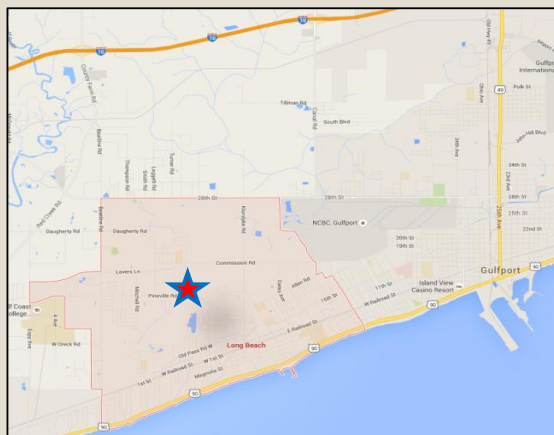
Mississippi Gulf Coast Metropolitan Planning Organization 2017-2020 Transportation Improvement Program (TIP)

County	Harrison	Agency	Long Beach	Project Cost	\$1,250,000	Project #	2017LB20
Improvement Type	Add Sidewalk					TIP Year	2020
Route/Category	Pineville Road					Length	1.7 miles
Termini	Beatline Road to Alexander Road						
Project Description	Add 1.7 miles of new sidewalk						

Fiscal Year	Funding Source	Project Phase	Federal Funds	Local Match	Total Cost
2020	STP-TMA	CON	\$1,000,000	\$250,000	\$1,250,000



Action History	Type	Date	Remarks:
Added to TIP	Amend	8/25/2016	\$1,000,000 STP



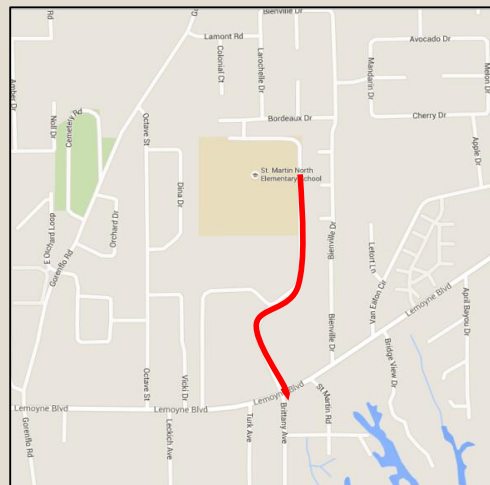
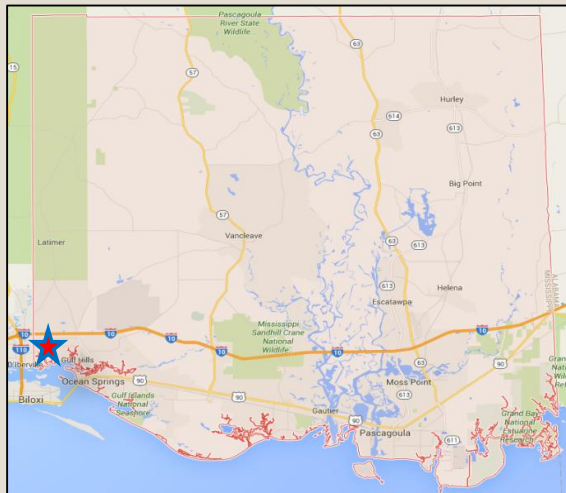
Mississippi Gulf Coast Metropolitan Planning Organization 2017-2020 Transportation Improvement Program (TIP)

County	Jackson	Agency	Jackson Co.	Project Cost	\$200,000	Project #	2017JAX20
Improvement Type	Add Sidewalk					TIP Year	2020
Route/Category	Yellow Jacket St. /St Martin North Elementary					Length	0.4
Termini	Lemoyne Blvd to School Entrance						
Project Description	Add new sidewalk from Lemoyne to school, include pedestrian bridge						

Fiscal Year	Funding Source	Project Phase	Federal Funds	Local Match	Total Cost
2020	TAP	CON	\$160,000	\$40,000	\$200,000



Action History	Type	Date	Remarks:
Added to TIP	Amend	8/25/2016	\$160,000 TAP





Mississippi Gulf Coast Transportation Improvement Program
FY2017-2020 Obligation Authority

FY 2017									
Jurisdiction	County	Project	Termini	Scope of Work	Phase	Federal Total	TMA	Non-Urban	TAP
Diamondhead	HAN	I-10 Interchange	On/off ramps	Lighting	CON	\$400,000	\$400,000		
Bay-Wave SD	HAN	Pine St.	Blue Meadow to Athletic Dr.	Sidewalk	CON	\$244,000			\$244,000
Gulfport	HAR	Airport Rd.	East end of 4-lane to Washington Ave.	Widening & Intersection Improvements	CON	\$550,000	\$550,000		
Gulfport	HAR	Seaway Rd.	Hwy 605 to Three Rivers Rd.	Multi-use Pathway	CON	\$788,304			\$788,304
Biloxi	HAR	Popps Ferry Bridge Submarine Cable	Bay of Biloxi	Cable replacement	CON	\$749,000	\$749,000		
Pascagoula	JAX	Hospital Rd.	Hwy 90 to Old Mobile Hwy	Widen	CON	\$2,293,217		\$2,293,217	
Jackson County	JAX	Lemoyne Blvd.	McCann Rd.	New Signal	CON	\$360,000	\$360,000		
MPO		Independent Safety Projects				\$600,000	\$600,000		
MPO		Independent Bike, Ped., or Transit Projects				\$380,000	\$380,000		
MPO		MPO Projects/Studies				\$400,000	\$400,000		
TOTAL						\$6,764,521	\$3,439,000	\$2,293,217	\$1,032,304

FY 2018									
Jurisdiction	County	Project	Termini	Scope of Work	Phase	Federal Total	TMA	Non-Urban	TAP
Diamondhead	HAN	Golf Club Dr.	Diamondhead Dr. East	Roundabout	CON	\$200,000	\$200,000		
Biloxi	HAR	Popps Ferry Rd. extension (Phase I)	Pass Rd. to Coliseum	New Roadway	CON	\$2,163,200	\$2,163,200		
D'Iberville	HAR	Popps Ferry Rd.	Belle St. to Galleria Pkwy.	Realignment & New Roadway	CON	\$2,938,779	\$2,938,779		
*Gautier	JAX	Martin Bluff Rd.	Gautier-Van. Rd. to Frontage Rd.	Intersection Improvements	CON	\$1,664,002		\$1,664,002	
MPO		Independent Safety Projects				\$500,000	\$500,000		
MPO		Independent Bike, Ped. or Transit Projects				\$500,000	\$500,000		
MPO		MPO Projects/Studies				\$400,000	\$400,000		
TOTAL						\$8,365,981	\$6,701,979	\$1,664,002	

FY 2019									
Jurisdiction	County	Project	Termini	Scope of Work	Phase	Federal Total	TMA	Non-Urban	TAP
Waveland	HAN	Waveland Ave.	US 90 to CSX Railroad	Sidewalk	CON	\$1,052,800	\$1,052,800		
Waveland	HAN	Nicholson Ave.	US 90 to S. Beach Blvd.	Overlay and widening	CON	\$800,000	\$800,000		
Pass Christian	HAR	North St.	Pass Christian HS to Pass Estates	Sidewalk	CON	\$452,800	\$452,800		
*Gulfport	HAR	Landon Rd.	US 49 to 34th Ave.	Widening to 4-lane divided	CON	\$1,000,000	\$1,000,000		
*Gautier	JAX	Martin Bluff Rd.	Gautier-Van. Rd. to Frontage Rd.	Intersection Improvements	CON	\$1,664,002		\$1,664,002	
Jackson County	JAX	Hwy 609	Old Fort Bayou Rd.	Intersection Improvements	CON	\$1,493,640	\$1,493,640		
MPO		Independent Safety Projects				\$500,000	\$500,000		
MPO		Independent Bike, Ped. or Transit Projects				\$500,000	\$500,000		
MPO		MPO Projects/Studies				\$400,000	\$400,000		
TOTAL						\$7,863,242	\$6,199,240	\$1,664,002	

FY 2020									
Jurisdiction	County	Project	Termini	Scope of Work	Phase	Federal Total	TMA	Non-Urban	TAP
Bay St. Louis	HAN	Old Spanish Trail	Main St. to Waveland City Limits	Lighting	CON	\$640,640	\$640,640		
*Gulfport	HAR	Landon Rd.	US 49 to 34th Ave.	Widening to 4-lane divided	CON	\$1,208,133	\$1,208,133		
Long Beach	HAR	Pineville Rd. Sidewalk	Beatline Rd. to Alexander Rd.	Sidewalk	CON	\$1,000,000	\$1,000,000		
Jackson County	JAX	St. Martin North Elem. (Yellow Jacket St.)	Lemoyne Blvd. to School	Sidewalk	CON	\$160,000			\$160,000
MPO		Independent Safety Projects				\$500,000	\$500,000		
MPO		Independent Bike, Ped. or Transit Projects				\$500,000	\$500,000		
MPO		MPO Projects/Studies				\$400,000	\$400,000		
TOTAL						\$2,560,000	\$2,400,000		\$160,000



Mississippi Gulf Coast FY2017-2020 Transportation Improvement Program

Federal Transit Administration (FTA)

Num.	Description	Grantee	Year Appportioned		Four Year Program Planned				Total Est. Cost	Comments /Carry Over
					2017	2018	2019	2020		
Sec 5307	Operating Assistance	CTA		Federal	\$2,327,500	\$2,350,000	\$2,375,000	\$2,400,000		
				Local	\$2,327,500	\$2,350,000	\$2,375,000	\$2,400,000		
				Admin	\$0	\$0	\$0	\$0		
				Total	\$4,655,000	\$4,700,000	\$4,750,000	\$4,800,000		

Num.	Description	Grantee	Year Appportioned		Four Year Program Planned				Total Est. Cost	Comments /Carry Over
					2017	2018	2019	2020		
Sec 5307	Preventive Maintenance	CTA		Federal	\$1,330,400	\$1,360,000	\$1,400,000	\$1,440,000		(June 2016) Increase FY17 from \$1,040,000 to \$1,330,400
				Local	\$332,600	\$340,000	\$350,000	\$360,000		
				Admin	\$0					
				Total	\$1,663,000	\$1,700,000	\$1,750,000	\$1,800,000		

Num.	Description	Grantee	Year Appportioned		Four Year Program Planned				Total Est. Cost	Comments /Carry Over
					2017	2018	2019	2020		
Sec 5307	In-House Planning	CTA		Federal	\$300,000	\$300,000	\$300,000	\$300,000		
				Local	\$75,000	\$75,000	\$75,000	\$75,000		
				Admin	\$0	\$0	\$0	\$0		
				Total	\$375,000	\$375,000	\$375,000	\$375,000		

Num.	Description	Grantee	Year Appportioned		Four Year Program Planned				Total Est. Cost	Comments /Carry Over
					2017	2018	2019	2020		
Sec 5307	Computer Equipment	CTA		Federal	\$16,000	\$16,000	\$16,000	\$16,000		
				Local	\$4,000	\$4,000	\$4,000	\$4,000		
				Admin	\$0	\$0	\$0	\$0		
				Total	\$20,000	\$20,000	\$20,000	\$20,000		

Num.	Description	Grantee	Year Appportioned		Four Year Program Planned				Total Est. Cost	Comments /Carry Over
					2017	2018	2019	2020		
Sec 5307	Shop Equipment	CTA		Federal	\$16,000	\$16,000	\$16,000	\$16,000		
				Local	\$4,000	\$4,000	\$4,000	\$4,000		
				Admin	\$0	\$0	\$0	\$0		
				Total	\$20,000	\$20,000	\$20,000	\$20,000		

Num.	Description	Grantee	Year Appportioned		Four Year Program Planned				Total Est. Cost	Comments /Carry Over
					2017	2018	2019	2020		
Sec 5307	ADA Operating Expenses	CTA		Federal	\$320,000	\$340,000	\$360,000	\$380,000		
				Local	\$80,000	\$85,000	\$90,000	\$95,000		
				Admin	\$0	\$0	\$0	\$0		
				Total	\$400,000	\$425,000	\$450,000	\$475,000		

Num.	Description	Grantee	Year Appportioned		Four Year Program Planned				Total Est. Cost	Comments /Carry Over
					2017	2018	2019	2020		
Sec 5307	Associated Transit Improvements	CTA		Federal	\$40,000	\$80,000	\$80,000	\$80,000		
				Local	\$10,000	\$20,000	\$20,000	\$20,000		
				Admin	\$0	\$0	\$0	\$0		
				Total	\$50,000	\$100,000	\$100,000	\$100,000		

Num.	Description	Grantee	Year Appportioned		Four Year Program Planned				Total Est. Cost	Comments /Carry Over
					2017	2018	2019	2020		
Sec 5307	Facility Rehab & Renovations	CTA		Federal	\$160,000	\$160,000	\$160,000	\$160,000		
				Local	\$40,000	\$40,000	\$40,000	\$40,000		
				Admin	\$0	\$0	\$0	\$0		
				Total	\$200,000	\$200,000	\$200,000	\$200,000		

Num.	Description	Grantee	Year Appportioned		Four Year Program Planned				Total Est. Cost	Comments /Carry Over
					2017	2018	2019	2020		
Sec 5307	Purchase Office Equipment	CTA		Federal	\$8,000	\$8,000	\$8,000	\$8,000		
				Local	\$2,000	\$2,000	\$2,000	\$2,000		
				Admin	\$0	\$0	\$0	\$0		
				Total	\$10,000	\$10,000	\$10,000	\$10,000		

Num.	Description	Grantee	Year Appportioned		Four Year Program Planned				Total Est. Cost	Comments /Carry Over
					2017	2018	2019	2020		
Sec 5307	Purchase Fare Box Equipment	CTA		Federal	\$40,000	\$40,000	\$40,000	\$40,000		
				Local	\$10,000	\$10,000	\$10,000	\$10,000		
				Admin	\$0	\$0	\$0	\$0		
				Total	\$50,000	\$50,000	\$50,000	\$50,000		

Num.	Description	Grantee	Year Appportioned		Four Year Program Planned				Total Est. Cost	Comments /Carry Over
					2017	2018	2019	2020		
Sec 5307	Purchase Communication Equipment	CTA		Federal	\$80,000	\$80,000	\$80,000	\$80,000		
				Local	\$20,000	\$20,000	\$20,000	\$20,000		
				Admin	\$0	\$0	\$0	\$0		
				Total	\$100,000	\$100,000	\$100,000	\$100,000		

Num.	Description	Grantee	Year Appportioned		Four Year Program Planned				Total Est. Cost	Comments /Carry Over
					2017	2018	2019	2020		
Sec 5307 or Sec 5339	Purchase Revenue Vehicles	CTA		Federal	\$400,000	\$400,000	\$400,000	\$400,000		
				Local	\$100,000	\$100,000	\$100,000	\$100,000		
				Admin	\$0	\$0	\$0	\$0		
				Total	\$500,000	\$500,000	\$500,000	\$500,000		

Num.	Description	Grantee	Year Appportioned		Four Year Program Planned				Total Est. Cost	Comments /Carry Over
					2017	2018	2019	2020		
Sec 5307	Purchase Support Vehicles	CTA		Federal	\$36,000	\$36,000	\$36,000	\$36,000		
				Local	\$9,000	\$9,000	\$9,000	\$9,000		
				Admin	\$0	\$0	\$0	\$0		
				Total	\$45,000	\$45,000	\$45,000	\$45,000		

Num.	Description	Grantee	Year Appportioned		Four Year Program Planned				Total Est. Cost	Comments /Carry Over
					2017	2018	2019	2020		
Sec 5307	JARC Purchased Transportation	CTA		Federal	\$380,000	\$400,000	\$420,000	\$450,000		(June 2016) Increase FY17 from \$365,000 to \$380,000
				Local	\$0	\$0	\$0	\$0		
				Admin	\$0	\$0	\$0	\$0		
				Total	\$380,000	\$400,000	\$420,000	\$450,000		

Num.	Description	Grantee	Year Appportioned		Four Year Program Planned				Total Est. Cost	Comments /Carry Over
					2017	2018	2019	2020		
Sec 5310	New Freedom Services	CTA		Federal	\$672,000	\$360,000	\$360,000	\$360,000		(June 2016) Increase FY17 from \$190,000 to \$672,000
				Local	\$168,000	\$90,000	\$90,000	\$90,000		
				Admin	\$0					
				Total	\$840,000	\$450,000	\$450,000	\$450,000		

Num.	Description	Grantee	Year Appportioned		Four Year Program Planned				Total Est. Cost	Comments /Carry Over
					2017	2018	2019	2020		
Sec 5307	Mobility Manager for Transit Outreach and Awareness	CTA		Federal	\$60,000	\$60,000	\$60,000	\$60,000		(June 2016) Increase FY17 from \$40,000 to \$60,000
				Local	\$15,000	\$15,000	\$15,000	\$15,000		
				Admin	\$0	\$0	\$0	\$0		
				Total	\$75,000	\$75,000	\$75,000	\$75,000		

Num.	Description	Grantee	Year Appportioned		Four Year Program Planned				Total Est. Cost	Comments /Carry Over
					2017	2018	2019	2020		
Sec 5307	Replacement Mobile Surveillance Equipment	CTA		Federal	\$128,000	\$80,000	\$80,000	\$80,000		Added to TIP June 2014
				Local	\$32,000	\$20,000	\$20,000	\$20,000		
				Admin	\$0					
				Total	\$160,000	\$100,000	\$100,000	\$100,000		

Num.	Description	Grantee	Year Appportioned		Four Year Program Planned				Total Est. Cost	Comments /Carry Over
					2017	2018	2019	2020		
Sec 5307	Expansion of the Gulfport Transit Center Intermodal Hub (NEPA included)	CTA		Federal	\$6,676,000	\$0	\$0	\$0		*Added to TIP June 2014. *Move and split \$6,560,000 in FY15 to FY16 and FY17 (5-2015) *(June 2016)Increase FY17 from \$3,280,000 to \$6,676,000
				Local	\$1,669,000	\$0	\$0	\$0		
				Admin	\$0	\$0	\$0	\$0		
				Total	\$8,345,000	\$0	\$0	\$0		

Num.	Description	Grantee	Year Appportioned		Four Year Program Planned				Total Est. Cost	Comments /Carry Over
					2017	2018	2019	2020		
Sec 5339, TIGER or Other	Gulfport Hwy 90 Tram Bridge Project	CTA		Federal	\$7,884,800	\$0	\$0	\$0		Added to TIP June 2016
				Local	\$1,971,200	\$0	\$0	\$0		
				Admin	\$0	\$0	\$0	\$0		
				Total	\$9,856,000	\$0	\$0	\$0		