

FY 2017-2020
Mississippi Gulf Coast
Metropolitan Planning Organization
Transportation Improvement Program

Modified April 5, 2018

Non-Discrimination Notification:

GRPC prohibits discrimination in all of its programs, services and activities. Public participation is solicited without regard to race, color, national origin, age, sex, religion, disability, or other protected status. Persons who require assistance under the Americans with Disabilities Act should contact the MPO at least five (5) business days prior to the any scheduled meeting, event or the end of a public review and comment period. Contact Stephanie Plancich at 228-864-1167 or by email to contactus@grpc.com with any requests, questions or comments.

Notation of Financial Assistance:

This document was prepared and published by Gulf Regional Planning Commission, the Mississippi Gulf Coast Metropolitan Planning Organization (MPO), in cooperation with or with financial assistance from the United States Department of Transportation (USDOT), the Federal Transit Administration (FTA), the Federal Highway Administration (FHWA) and the Mississippi Department of Transportation (MDOT). Assistance notwithstanding, the contents of this document do not necessarily reflect the official view or policies of the funding agencies.

Notice of Public review:

In compliance with federal regulation 23 CFR 450 and the FTA public participation requirements of the Section 5307 POP notice, the Mississippi Gulf Coast Metropolitan Planning Organization (MPO) sought public input from 2/19/18 through 3/1/2018 prior to adopting this amended Transportation Improvement Program (TIP). The public participation summary is included in the Appendix of this document.



Mississippi Gulf Coast Transportation Improvement Program

Mississippi Gulf Coast MPO

The Metropolitan Planning Organization (MPO) is a federally mandated planning body responsible for transportation planning in the Mississippi Gulf Coast urbanized areas. The Gulf Regional Planning Commission (GRPC) serves as the MPO for the Mississippi Gulf Coast, coordinating transportation programs for all jurisdictions within the urbanized areas of Hancock, Harrison, and Jackson Counties. It is the lead agency responsible for developing and administering plans and programs to maintain eligibility and receive federal funds for the transportation systems in the Mississippi Gulf Coast area. The primary mission of the MPO is to develop and maintain a transportation planning process that is compliant with federal and state requirements, and supports the development and enhancement of sustainable multimodal facilities, programs and systems in the Mississippi Gulf Coast area. The Transportation Improvement Program (TIP) is one of the most important products of the MPO's planning process.

What is the TIP?

The Transportation Improvement Program (TIP) is a financially constrained program developed through an on-going planning process for addressing short-term transportation priorities that are consistent with the MS Gulf Coast's Metropolitan Transportation Plan (MTP), the long-range transportation plan for our region.

The MPO, in cooperation with the State(s) and any affected public transportation operator(s), shall develop a TIP for the metropolitan planning area. The TIP shall cover a period of no less than four years, be updated at least every four years, and be approved by the MPO and the Governor. However, if the TIP covers more than four years, the FHWA and the FTA will consider the projects in the additional years as informational. The TIP may be updated more frequently, but the cycle for updating the TIP must be compatible with the STIP development and approval process. (23 CFR 450.324)

The TIP is developed and approved by the MPO and is included, without modification, in the Statewide Transportation Improvement Program (STIP) following approval by the Governor. The TIP can be modified at any time subject to approval of the MPO technical and policy committees.

MPO STP funding

The TIP includes federal funding for projects provided through the Surface Transportation Program (STP) and is administered through the Federal Highway Administration (FHWA). These funds are apportioned to each state's urbanized area through the Metropolitan Planning Organization (MPO). A formula is developed to apportion these funds to each state based on that state's urbanized area population as a ratio of the nation's total urbanized area population. With the exception of certain safety projects, TIP projects are generally funded using an 80% federal/20% local ratio. For a project to be considered for inclusion in the TIP, a commitment from the sponsoring agency to provide the required local matching funds is required.

Advance Construction

The MPO uses a technique which allows a state to initiate a project using non-Federal funds while preserving eligibility for future Federal-aid funds. Eligibility means that FHWA has determined that the project technically qualifies for Federal-aid although no present or future Federal funds are committed to the project. After an advance construction project is authorized, the state may convert the project to regular Federal-aid funding provided Federal funds are made available for the project.

Public transportation operators

The TIP includes projects funded by the Federal Transit Administration (FTA) including FTA Discretionary Grant Program (Section 5309), FTA Job Access/Reverse Commute Program (5316), FTA New Freedom Program (5317), FTA Rural Transit Program (Section 5311), FTA Transportation Planning Program (Section 5303), Handicapped Transportation Program (Section 5310) FTA Elderly.

MDOT projects

Although not specifically listed in the Gulf Coast TIP, the Mississippi Department of Transportation (MDOT) must get approval from the MPO regarding the allocation of funds to projects in the Gulf Coast urbanized area from sources such as: Interstate Maintenance, Bridge Replacement, National Highway System, Surface Transportation Program, and others. More information on these funding sources can be found in MDOT's Statewide Transportation Program.

Safety projects

The Mississippi Gulf Coast MPO will set aside 10% of the gulf coast's annual Surface Transportation Program (STP) funds for stand alone projects that will enhance the safe mobility of all modes of transportation on the Mississippi Gulf Coast. Specified safety projects are eligible for 100% funding.

Specified projects include: traffic control signalization, maintaining minimum levels of retroreflectivity of highway signs or striping, traffic circles/roundabouts, safety rest areas, pavement markings, shoulder and centerline rumble strips and stripes, commuter carpooling and vanpooling, rail crossing improvements, installation of traffic signs, traffic lights, guardrails, impact attenuators, concrete barrier endtreatments, breakaway utility poles, or priority control systems for emergency vehicles or transit vehicles at signalized intersections. Read the full guidance at Title23USC.Sec. 120(c) (1)

TAP projects

The Transportation Alternatives Program (TAP) is eligible for funding under the Surface Transportation Program (STP). The TAP was established under the Moving Ahead for Progress in the 21st Century (MAP-21) of 2012 and replaces the Transportation Enhancement Program (TEP), Safe Routes to School Program (SRSP), as well as the Recreational Trails Program (RTP).

Bicycle, pedestrian and transit projects

The Mississippi Gulf Coast MPO will set aside 10% of the gulf coast's Surface Transportation Program (STP) funds for projects that will improve bicycle, pedestrian and transit accessibility and mobility in the region. An independent walkway project must be constructed on highway right-of-way or easement and will be constructed separately from a Federal-aid highway construction project.

MPO studies/projects

The Mississippi Gulf Coast MPO will set aside \$400,000 in STP funds annually for the purpose of developing and implementing projects that directly support the MPO goals and objectives. Each year a project (or projects) will be selected by GRPC for funding through this program. Project(s) are based on needs identified through the agency's transportation planning process toward the provision of an efficient, safe and accessible transportation system for all modes. Projects considered for funding through this program include: various intersection improvement projects that enhance traffic flow and/or safety; projects that enhance transportation modal options (bike/pedestrian, transit, etc.); projects that improve roadway safety; intersection analyses; corridor studies; safety audits; and others.

TIP development process

New project applications are accepted by the MPO annually. In even years, this amendment process includes two new years of funding allocation for the region resulting in an updated TIP. In the odd years, the MPO will open the amendment process with any available funds remaining. Amendments and modifications other than for new projects can be requested quarterly at the MPO's TIP Progress meeting. Requests for technical studies can be made at any time to be included in the next quarterly meeting. Amendment recommendations are made by the MPO sub-committee and the Technical Coordinating Committee (TCC), they are then reviewed and final changes are adopted by the Transportation Policy Committee (TPC). Then the TIP is submitted to MDOT for approval and then Federal Highway Administration (FHWA) and Federal Transit Administration (FTA) shall jointly find that each metropolitan TIP is consistent with the metropolitan transportation plan produced by the continuing and comprehensive transportation process carried on

Public review

As required in CFR 450.316, The MPO maintains a Public Participation Plan (PPP) that defines a process for providing interested parties with a reasonable opportunity to comment on the proposed TIP including at least one public meeting. Appendix A includes public engagement materials for the most recent update to the TIP.

For more information and when and how to participate in the public review and comment period visit www.grpc.com or contact Stephanie Plancich at splancich@grpc.com by calling 228-864-1167. You may also mail or make comments at the GRPC offices located at 1635-G Popps Ferry Road, Biloxi MS, 39532.



**Mississippi Gulf Coast
Transportation Improvement Program
Estimated Funding: FY2017-2020**

NOTE: Estimated funding for all programmed years beyond the first year are based on the reasonable expectation of continued funding for all federally supported programs.

Estimated Available Funds 2017				
Funding Source	Carryover	Federal	Local	Total
STP Projects	\$18,103,989	\$5,171,690	\$1,292,922	\$6,464,612
Safety Projects		\$171,256	\$0	\$171,256
Bicycle, Pedestrian and Transit Projects	\$108,566	\$500,000	\$152,141	\$760,707
MPO Studies/Projects	\$560,209	\$400,000	\$240,052	\$1,200,261
TAP Projects	\$1,194,552	\$310,730	\$376,320	\$1,881,602
Estimated Available Funds 2018				
Funding Source	Carryover	Federal	Local	Total
STP Projects		\$5,260,586	\$1,315,146	\$6,575,732
Safety Projects		\$500,000	\$0	\$500,000
Bicycle, Pedestrian and Transit Projects		\$500,000	\$125,000	\$625,000
MPO Studies/Projects		\$400,000	\$100,000	\$500,000
TAP Projects		\$310,730	\$77,682	\$388,412
Estimated Available Funds 2019				
Funding Source	Carryover	Federal	Local	Total
STP Projects		\$5,351,260	\$1,337,815	\$6,689,075
Safety Projects		\$500,000	\$0	\$500,000
Bicycle, Pedestrian and Transit Projects		\$500,000	\$125,000	\$625,000
MPO Studies/Projects		\$400,000	\$100,000	\$500,000
TAP Projects		\$310,730	\$77,682	\$388,412
Estimated Available Funds 2020				
Funding Source	Carryover	Federal	Local	Total
STP Projects		\$5,443,748	\$1,360,937	\$6,804,685
Safety Projects		\$500,000	\$0	\$500,000
Bicycle, Pedestrian and Transit Projects		\$500,000	\$125,000	\$625,000
MPO Studies/Projects		\$400,000	\$100,000	\$500,000
TAP Projects		\$310,730	\$77,682	\$388,412

Mississippi Gulf Coast Transportation Improvement Program (TIP) - 2017-2020 Summary

PROJECTS FOR FY 2017

GRPC #	Jurisdiction	Project	Termini	Scope of Work	Federal Share	TMA	Non-Urban	TAP	B/P/T	Safety	Studies
2007BIL12-2	Biloxi	Submarine Cable	Southbank and Mechanical Room	Bridge	\$1,178,000	\$1,178,000					
2011GP13	*Gulfport	Dedaux Road	Three Rivers Intersection Eastward	Reconstruction	\$1,573,635	\$1,573,635					
2013GP18	*Gulfport	Courthouse Road	Hwy 90 to Pass Rd	Reconstruction	\$1,006,598	\$1,006,598					
2017LB20	Long Beach	Pineville Rd Sidewalk	Beatline Rd to Willow Creek Dr	Bicycle/Pedestrian	\$1,000,000	\$1,000,000					
2017OS17	Ocean Springs	Porter Ave	Williams Ave and Martin St	Bicycle/Pedestrian	\$930,000	\$930,000					
2008PG15(1)	*Pascagoula	Hospital Rd. Phase 1	Old Mobile Hwy to Tupelo Ave	Reconstruction	\$412,472		\$412,472				
ST-WV17	Waveland	Sidewalk Study	Between Waveland & Nicholson Ave	Study	\$82,641	\$82,641					\$82,641
ST-JAX17(2)	Jackson County	Jackson Co. Bike Study	Countywide	Study	\$91,463	\$91,463					\$91,463
ST-HAN17	Hancock County	Beach Blvd Ped Access	Hwy 90 to Lakeshore Dr	Study	\$36,000	\$36,000					\$36,000
SF-GRPC17(1)	GRPC	Get To B Safety Series	Workforce Development	Safety	\$12,000	\$12,000				\$12,000	
SF-GRPC17(2)	GRPC	*Get To B Road Safety Phase 2	Tri-County Project PS&E	Safety	\$150,000	\$150,000				\$150,000	
TOTALS					\$6,472,809	\$6,060,337	\$412,472	\$0	\$0	\$162,000	\$210,104

PROJECTS FOR FY 2018

GRPC #	Jurisdiction	Project	Termini	Scope of Work	Federal Share	TMA	Non-Urban	TAP	B/P/T	Safety	Studies
2017BW17	Bay-Wav School	Pine St	Blue Meadow Rd to Athletic Drive	Bicycle/Pedestrian	\$244,000			\$244,000			
2014BSL15	Bay St Louis	Carrol Ave	Sheffield Park to Pine St	SRTS	\$100,000			\$100,000			
2015WV19	Waveland	Waveland Ave.	US 90 to Dubuc Ln	Bicycle/Pedestrian	\$1,052,800	\$1,052,800					
2017DH17	Diamondhead	I-10 Interchange Lighting	East and West on/off ramps	Interchange	\$538,182	\$538,182					
2017DH18(2)	Diamondhead	E Aloha Drive	Veterans Dr to the Medical Park	Bicycle/Pedestrian	\$136,400			\$136,400			
2017JAX17	Jackson County	Lemoyne Blvd Signal	McCann Rd	Signal/Pedestrian	\$360,000	\$360,000					
2017JAX20	Jackson County	St Martin N Elementary Sidewalks	Lemoyne Blvd to School	Bicycle/Pedestrian	\$160,000			\$160,000			
2008PG15(2)	Pascagoula	Hospital Rd. Phase 2	Hwy 90 to Tupelo Ave	Reconstruction	\$1,714,935		\$1,714,935				
BPT-GP18	Gulfport	20th Ave	Hwy 90 to 15th St	Transit/Pedestrian	\$507,169	\$507,169			\$507,169		
2016GP17	Gulfport	Seaway Rd Separated Path	Three Rivers to Hwy 605	Bicycle/Pedestrian	\$788,304			\$788,304			
SF-DIB16	D'Iberville	D'Iberville Blvd	Boney Ave	Signal Installation	\$198,950	\$198,950				\$198,950	
SF-GRPC17(2)	GRPC	*Get To B Road Safety Phase 2	Tri-County Project Construction	Safety	\$1,000,000	\$1,000,000				\$1,000,000	
SF-GRPC18	GRPC	Traffic Signal Prioritization PE	Biloxi & Gulfport Signals	Safety	\$50,000	\$50,000				\$50,000	
ST-JAX17(1)	Jackson County	McCann Road Study	I-10 Overpass Feasibility	Study	\$112,000	\$112,000					\$112,000
ST-BIL18	Biloxi	Biloxi Rail Corridor Study	Oak St to Porter Ave	Study	\$150,000	\$150,000					\$150,000
ST-DH18	Diamondhead	E. Aloha Dr	Veterans Dr to Kalani Dr	Study	\$16,000	\$16,000					\$16,000
2018PC18	Pass Christian	Clark Ave	Bridge Replacement	Bridge	\$200,000	\$200,000					
TOTALS					\$7,328,740	\$4,185,101	\$1,714,935	\$1,428,704	\$507,169	\$1,248,950	\$278,000

PROJECTS FOR FY 2019

GRPC #	Jurisdiction	Project	Termini	Scope of Work	Federal Share	TMA	Non-Urban	TAP	B/P/T	Safety	Studies
2007BIL12	Biloxi	Popps Ferry Rd. Extension (Phase I)	Pass Rd. to Coliseum	New Roadway	\$2,163,200	\$2,163,200					
2004GAU12	*Gautier	Martin Bluff Rd.	Gautier-Van. Rd. to Frontage Rd.	Reconstruction	\$1,664,002	\$528,002	\$1,136,000				
2015GP19	*Gulfport	Landon Rd.	US 49 to 34th Ave.	Widen/Congest. Mgmt	\$1,000,000	\$1,000,000					
2015GP17	Gulfport	Airport Rd.	East end of 4-lane to Washington Ave.	Widen/Roundabout	\$550,000	\$550,000					
2017WV19	Waveland	Nicholson Ave	Hwy 90 to Beach Blvd	Bicycle/Pedestrian	\$800,000	\$800,000					
2015PC19	Pass Christian	North St.	Pass Christian HS to Pass Estates	Bicycle/Pedestrian	\$452,800	\$452,800			\$452,800		
SF-GRPC18(1)	GRPC	Traffic Signal Prioritization CON	Biloxi & Gulfport Signals	Safety	\$500,000	\$500,000				\$500,000	
	GRPC	MPO Bike/Ped/Transit Group			\$500,000	\$500,000					
	GRPC	MPO Studies Group			\$400,000	\$400,000					
TOTALS					\$8,030,002	\$6,894,002	\$1,136,000	\$0	\$452,800	\$500,000	\$0

PROJECTS FOR FY 2020

GRPC #	Jurisdiction	Project	Termini	Scope of Work	Federal Share	TMA	Non-Urban	TAP	B/P/T	Safety	Studies
2015GP19	*Gulfport	Landon Rd.	US 49 to 34th Ave.	Widen/Pedestrian	\$1,208,133	\$1,208,133					
2004GAU12	*Gautier	Martin Bluff Rd.	Gautier-Van. Rd. to Frontage Rd.	Reconstruction	\$1,664,002	\$886,002	\$778,000				
2017DIB18	D'Iberville	Popps Ferry Rd	Belle St. to Galleria Pkwy	New Roadway	\$2,938,780	\$2,938,780					
2013JAX17	Jackson County	Hwy 609 @ Old Fort Bayou Rd.	Old Fort Bayou Rd. intersection	Intersection	\$1,493,640	\$1,493,640					
	GRPC	MPO Safety Group			\$500,000	\$500,000					
	GRPC	MPO Bike/Ped/Transit Group			\$500,000	\$500,000					
	GRPC	MPO Studies Group			\$400,000	\$400,000	\$778,000				
TOTALS					\$8,704,555	\$7,926,555					

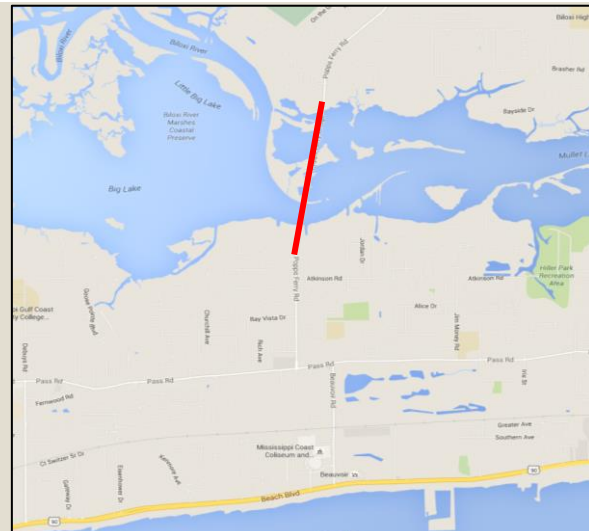
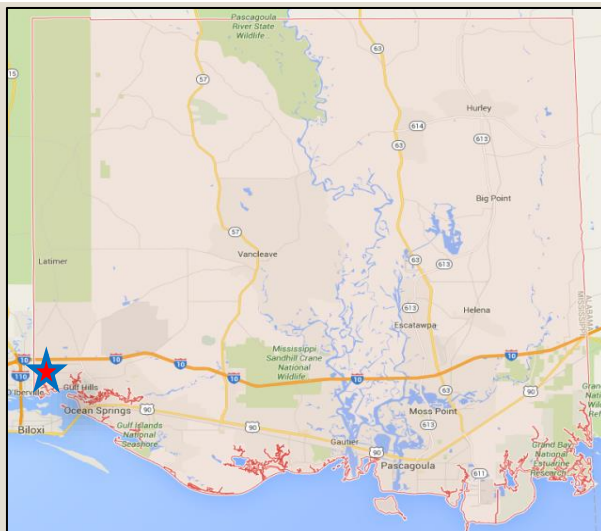
Mississippi Gulf Coast Metropolitan Planning Organization 2017-2020 Transportation Improvement Program (TIP)

County	Harrison	Agency	Biloxi	Project Cost	\$1,534,015	Project #	2007BIL12(2)
Improvement Type	Bridge Improvement					TIP Year	2017
Route/Category	Popps Ferry Road					Length	.3 mi.
Termini	Length of Bridge						
Project Description	Submarine cable installation						

Fiscal Year	Funding Source	Project Phase	Federal Funds	Local Match	Total Cost
2017	STP-TMA	CON	\$1,178,000	\$356,015	\$1,534,015



Action History	Type	Date	Remarks:
Added to TIP	Amend	5/31/2007	\$560,000 STP
Change CON FY	Mod	10/1/2012	Move from FY12 to FY13
Increase Funding	Amend	3/28/2013	Increase STP to \$749,000
Change CON FY	Mod	10/12/2015	Change to FY16
Change CON FY	Mod	8/25/2016	Change to FY17
			Project obligated in FY17
Increase Funding	Amend	3/1/2018	Increase STP \$429,000, new total is \$1,178,000



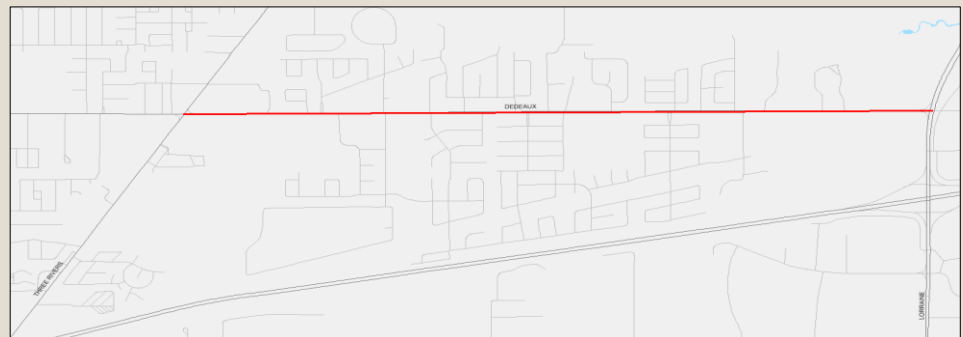
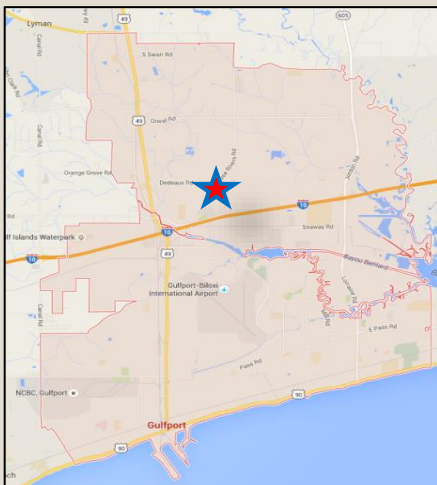
Mississippi Gulf Coast Metropolitan Planning Organization 2017-2020 Transportation Improvement Program (TIP)

County	Harrison	Agency	Gulfport	Project Cost	\$6,741,119	Project #	2011GP13
Improvement Type	Reconstruction					TIP Year	16/17
Route/Category	Dedeaux Rd					Length	2.7 miles
Termini	From Three Rivers Road Eastward						
Project Description	Reconstruction to include complete street concepts						

Fiscal Year	Funding Source	Project Phase	Federal Funds	Local Match	Total Cost
2015	Earmark/MDOT/STP	ROW	\$560,000	\$140,000	\$700,000
2016	TMA-STP	CON	\$3,259,260	\$814,815	\$4,074,075
2017	TMA-STP	CON	\$1,573,635	\$393,409	\$1,967,044



Action History	Type	Date	Remarks:
Funding Change	Amend	8/2/2011	Add to TIP, Federal Earmark
Add Phase	Amend	8/2/2011	Add 2011 (PE) phase to project. \$1,025,871 (Federal Earmark)
Add STP funding	Amend	11/30/2011	Add \$3,000,000 STP
Change CON FY	Mod	9/13/2013	Move from FY 2013 to FY 2015
Change CON FY	Mod	3/10/2014	Move from FY 2015 to FY 2016
Split funding FY	Mod	9/25/2014	Split funding between FY17 & FY18
Change FY & Funding	Mod	11/19/2014	Mod ROW phase, to FY15, change fund source from "Earmark" to "Earmark/STP-MDOT", change Fed funds to \$560,000
FY change	Mod	12/10/2015	Change from FY17&FY18 to just FY17
Add STP & FY change	Mod	8/25/2016	Change from FY17 to FY16 and add \$259,260STP
			Project obligated in FY16
Add STP funding	Amend	2/23/2017	Add \$1,573,635STP to FY17
			Additional funds obligated in FY17



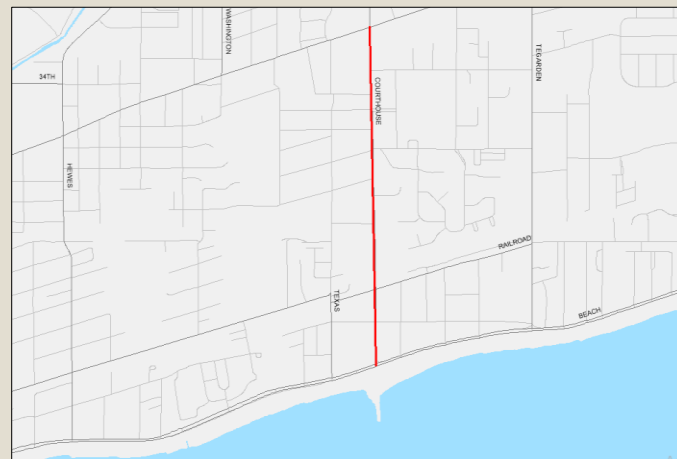
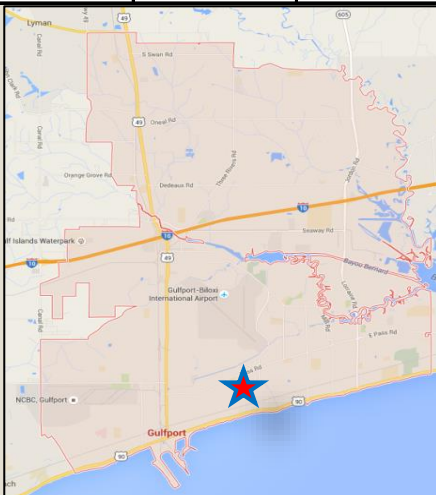
Mississippi Gulf Coast Metropolitan Planning Organization 2017-2020 Transportation Improvement Program (TIP)

County	Harrison	Agency	Gulfport	Project Cost	\$5,486,326	Project #	2013GP18
Improvement Type	Reconstruction					TIP Year	16/17
Route/Category	Courthouse Road					Length	1 mile
Termini	Hwy 90 to Pass Road						
Project Description	Reconstruction to include complete street concepts						

Fiscal Year	Funding Source	Project Phase	Federal Funds	Local Match	Total Cost
2016	STP	CON	\$3,382,462	\$845,616	\$4,228,078
2017	STP	CON	\$1,006,598	\$251,650	\$1,258,248



Action History	Type	Date	Remarks:
Added to TIP	Amend	10/24/2013	\$2,683,532 STP
Change CON FY	Mod	3/10/2014	Change from FY18 to 17
Change CON FY	Mod	9/25/2014	Advance Construction between FY17 and FY18
Change CON FY	Mod	12/10/2015	Change years to FY16 & 17
Add STP Funds	Mod	6/12/2016	Add \$22,660 STP for Rail diagnostics
Add STP Funds	Amend	8/25/2016	Add \$676,270 STP to FY16
			Project obligated in FY16
Add STP Funds	Amend	2/23/2017	Add \$623,598 STP to FY17
Add STP Funds	Mod	4/27/2017	Add \$383,000 STP, new FY17 total is \$1,006,598
			Additional funds obligated in FY17



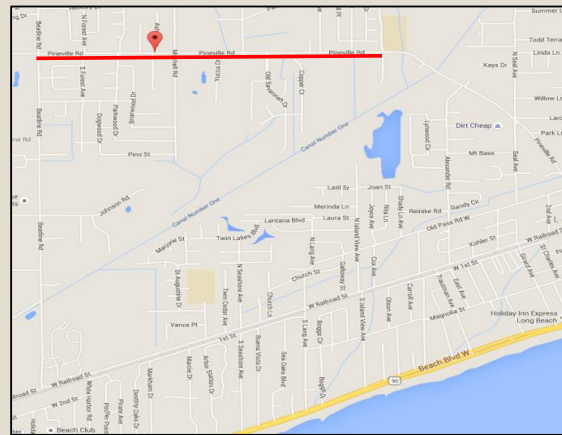
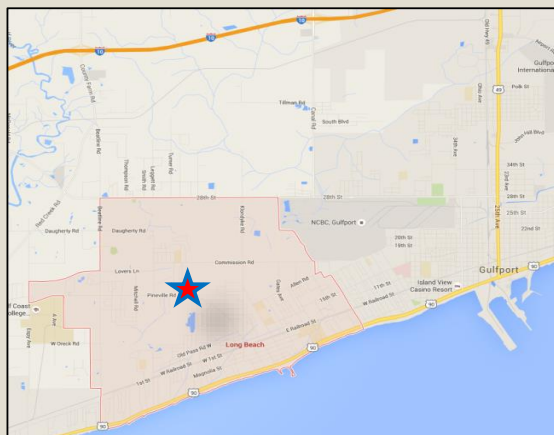
Mississippi Gulf Coast Metropolitan Planning Organization 2017-2020 Transportation Improvement Program (TIP)

County	Harrison	Agency	Long Beach	Project Cost	\$1,250,000	Project #	2017LB20
Improvement Type	Add Sidewalk					TIP Year	2017
Route/Category	Pineville Road					Length	1.2 miles
Termini	Beatline Road to Willow Creek Drive						
Project Description	Add 1.7 miles of new sidewalk						

Fiscal Year	Funding Source	Project Phase	Federal Funds	Local Match	Total Cost
2017	STP-TMA	CON	\$1,000,000	\$250,000	\$1,250,000



Action History	Type	Date	Remarks:
Added to TIP	Amend	8/25/2016	\$1,000,000 STP
Change CON FY	Mod	2/23/2017	Move from FY20 to FY17
Change Termini	Amend	5/25/2017	Change termini from Alexander Rd to Royal Dr
Correct Termini	Mod	8/31/2017	Change from Royal Dr to Willow Creek Dr.
			Project obligated in FY17



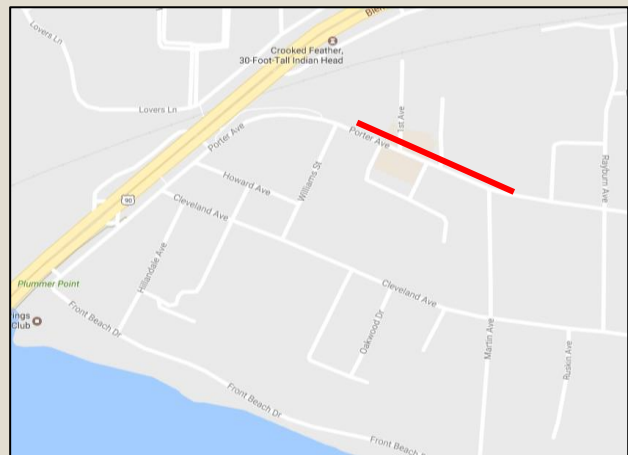
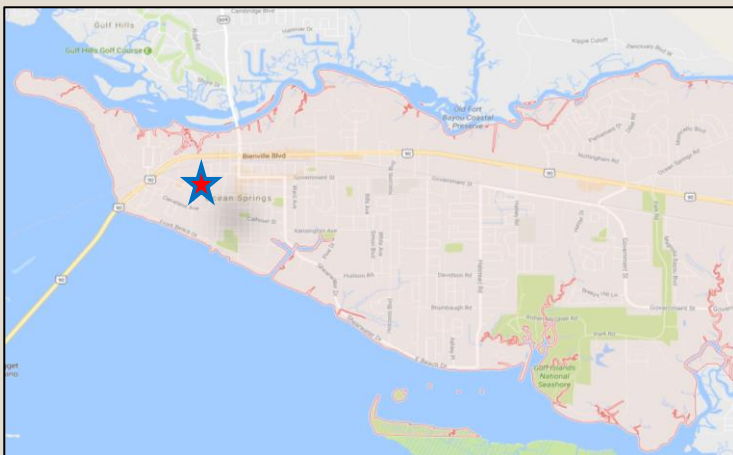
Mississippi Gulf Coast Metropolitan Planning Organization 2017-2020 Transportation Improvement Program (TIP)

County	Jackson	Agency	Ocean Springs	Project Cost	\$1,162,500	Project #	2017OS17
Improvement Type	Reconstruction, Sidewalks					TIP Year	2017
Route/Category	Porter Ave					Length	.2 miles
Termini	Williams ave to Martin St						
Project Description	Reconstruction of roadway and sidewalk improvement/installation connecting the existing sidewalk systems						

Fiscal Year	Funding Source	Project Phase	Federal Funds	Local Match	Total Cost
2017	STP	CON	\$930,000	\$232,500	\$1,162,500



Action History	Type	Date	Remarks:
Added to TIP	Amend	2/23/2017	\$930,000 STP
			Project obligated in FY17



Mississippi Gulf Coast Metropolitan Planning Organization 2017-2020 Transportation Improvement Program (TIP)

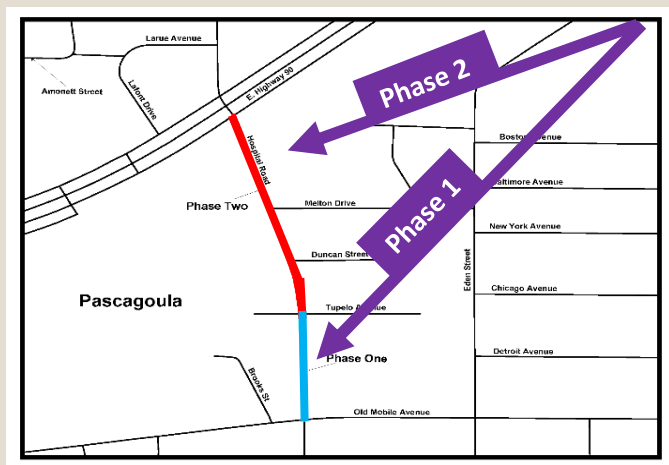
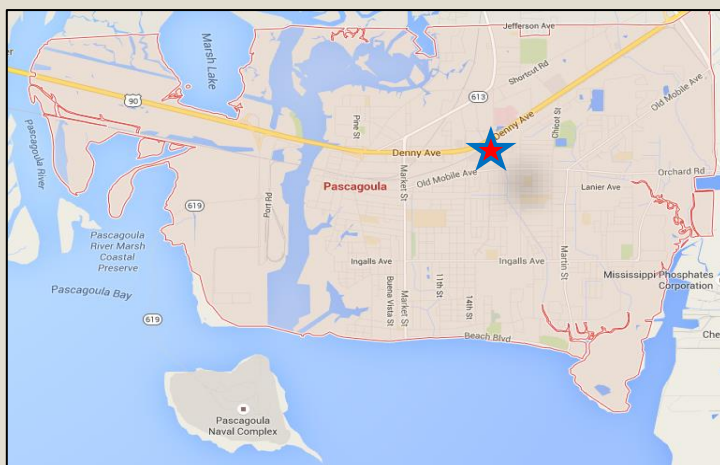
County	Jackson	Agency	Pascagoula	Project Cost	\$1,640,591	Project #	2008PG15(2)
Improvement Type	Reconstruction					TIP Year	2016
Route/Category	Hospital Road - Phase 1					Length	.15 mi.
Termini	Old Mobile Hwy to Tupelo Ave						
Project Description	Road widening, sidewalks, bike lanes, utility bridge improvements and roundabout installation						

Fiscal Year	Funding Source	Project Phase	Federal Funds	Local Match	Total Cost
2016	STP-Non-Urb	CON	\$900,000	\$225,000	\$1,125,000
2017	STP-Non-Urb	CON	\$356,766	\$89,192	\$445,958
2017	STP-Non-Urb	CON	\$55,706	\$13,927	\$69,633
			\$1,312,472	\$328,119	



Action History	Type	Date	Remarks:
Project Added to TIP	Amend	12/11/2008	\$494,400 STP Non-Urban
Increase Funding	Amend	10/24/2013	Add \$1,798,817 STP for total of \$2,293,217 STP
Change CON FY	Mod	9/13/2013	Change From FY15 to FY 16
Split Funding	Mod	10/0/2014	Split funds between FY 17 & FY 18
Change CON FY	Mod	11/0/2015	Move up from FY17/18 to FY16/17
Change CON FY	Mod	8/25/2016	Create Phases: \$900,000 for Ph. 1, \$1,393,217 for Ph. 2
			Project obligated in FY16
Increase Funding	Mod	4/27/2017	Add \$356,766 non-urban, total is now \$1,256,766
Increase Funding	Amend	12/14/2017	Add \$55,706 STP funds, total is now \$1,312,472
			Additional funds obligated in FY17

*Photo Note: Blue Portion is Phase 1, red portion is Phase 2.



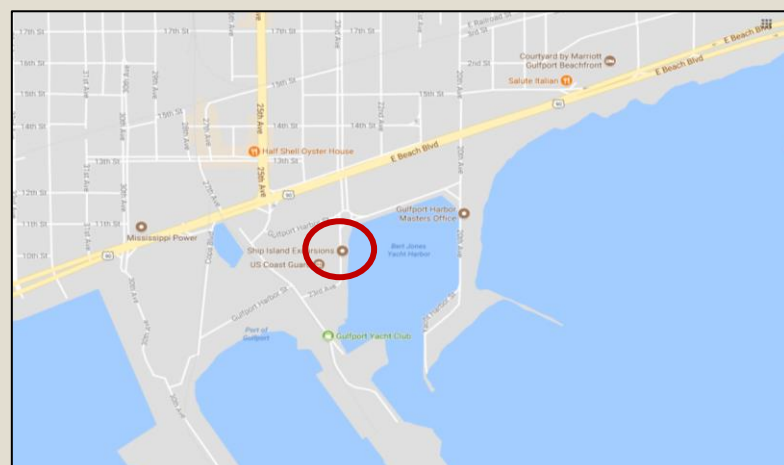
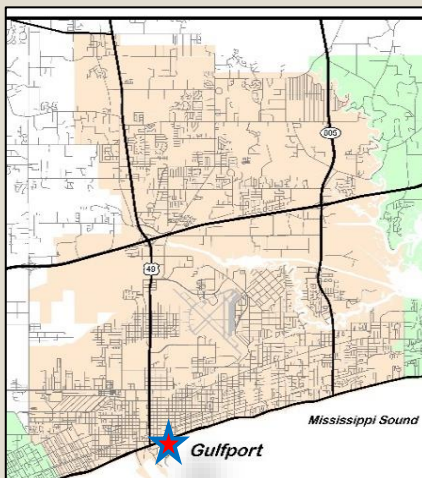
Mississippi Gulf Coast Metropolitan Planning Organization 2017-2020 Transportation Improvement Program (TIP)

County	Harrison	Agency	Gulfport	Project Cost	\$1,446,141	Project #	2009GP12
Improvement Type	Ferry Terminal Improvements					TIP Year	2017
Route/Category	Ship Island					Length	n/a
Termini	Gulfport Harbor Terminal						
Project Description	Improvements to terminal, pavillion and pier						

Fiscal Year	Funding Source	Project Phase	Federal Funds	Local Match	Total Cost
2017	Earmark	CON	\$1,156,913	\$289,228	\$1,446,141



Action History	Type	Date	Remarks:
Added to TIP	Amend	5/21/2009	ARRA Ferry Grant \$876,744
Add STP funds	Amend	11/30/2011	Add \$560,301 STP
Change FY	Mod	10/1/2012	Move from FY12 to FY13
Remove Funds	Mod	5/2/2013	ARRA Ferry Boat Discretionary Funds
Change FY	Mod	9/13/2013	Move from FY13 to FY15
Change FY	Mod	7/27/2014	Move from FY15 to FY18
Removed	Amend	6/30/2015	Remove project from TIP
Re-Added to TIP	Amend	2/23/2017	Ferry Boat Earmark Funds, \$1,156,913 (MDOT #104143)
			Project obligated in FY17



Mississippi Gulf Coast Metropolitan Planning Organization 2017-2020 Transportation Improvement Program (TIP)

County	Hancock	Agency	Waveland	Project Cost	\$82,641	Project #	ST-WV17
Improvement Type	Sidewalk Study					TIP Year	2017
Route/Category	Neighborhood					Length	n/a
Termini	Between Waveland Ave and Nicholson Ave						
Project Description	Evaluate the need and best application for improved bike/ped facilities in the project neighborhood						

Fiscal Year	Funding Source	Project Phase	Federal Funds	Local Match	Total Cost
2017	STP-TMA	Study	\$82,641	\$20,661	\$103,302



Action History	Type	Date	Remarks:
Add Project to TIP	Amend	5/25/2017	\$80,000 STP from Study Group
Add Funds	Mod	8/31/2017	Add \$2,641 STP to Match Cost Estimate
			Project obligated in FY17



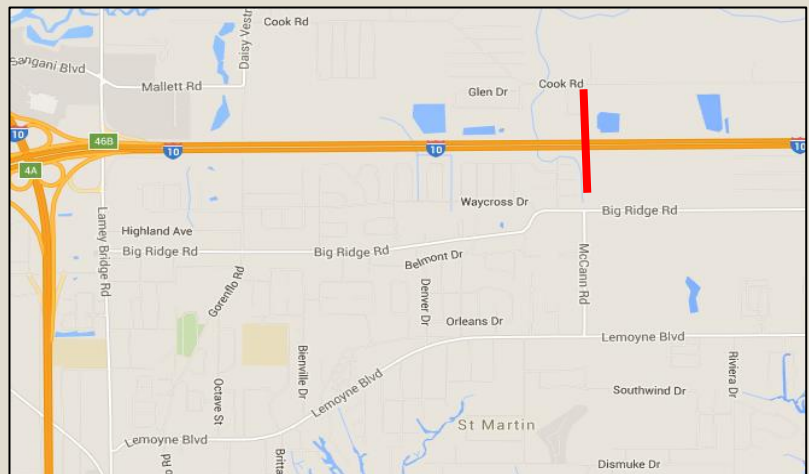
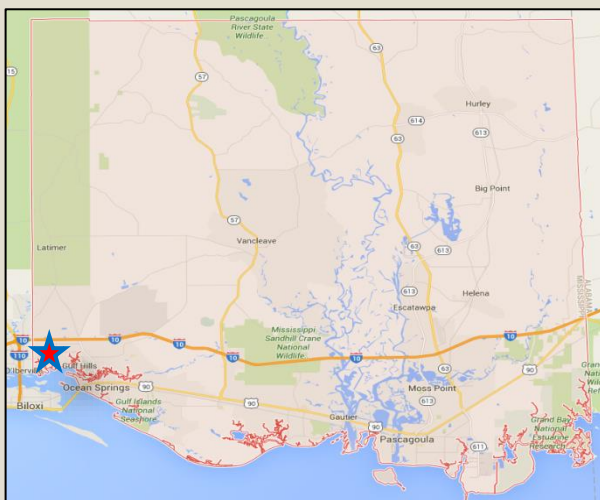
Mississippi Gulf Coast Metropolitan Planning Organization 2017-2020 Transportation Improvement Program (TIP)

County	Jackson	Agency	Jackson Co.	Project Cost		Project #	ST-JAX17
Improvement Type	Overpass Feasibility Study					TIP Year	2017
Route/Category	McCann Rd					Length	n/a
Termini	I-10 cross over to Cook Rd						
Project Description	Evaluate the feasibility to build an overpass on McCann Rd						

Fiscal Year	Funding Source	Project Phase	Federal Funds	Local Match	Total Cost
2017	STP-TMA	Study	\$112,000	\$28,000	\$140,000



Action History	Type	Date	Remarks:
Add Project to TIP	Amend	5/25/2017	\$112,000 STP from Study Group
			Project obligated in FY17



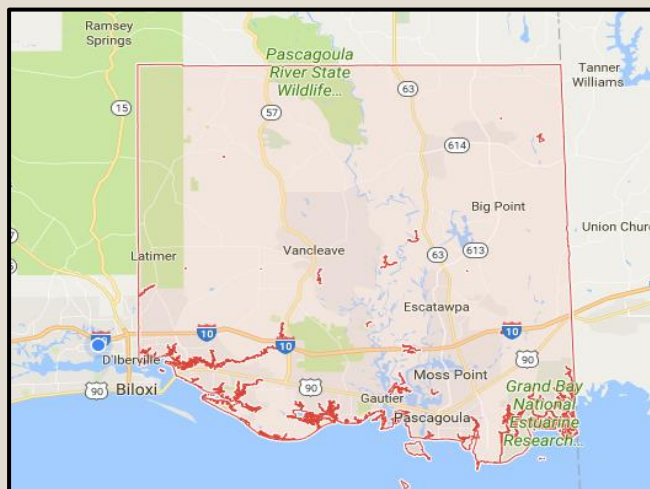
Mississippi Gulf Coast Metropolitan Planning Organization 2017-2020 Transportation Improvement Program (TIP)

County	Jackson	Agency	Jackson Co.	Project Cost	\$114,329	Project #	ST-JAX17
Improvement Type	Overpass Feasibility Study					TIP Year	2017
Route/Category	McCann Rd					Length	n/a
Termini	I-10 cross over to Cook Rd						
Project Description	Evaluate the feasibility to build an overpass on McCann Rd						

Fiscal Year	Funding Source	Project Phase	Federal Funds	Local Match	Total Cost
2018	STP-TMA	Study	\$91,463	\$22,866	\$114,329



Action History	Type	Date	Remarks:
Add Project to TIP	Mod	2/23/2017	\$80,000 STP from Study Group
Add Funds	Mod	5/25/2017	\$11,463 from Study Group
Change FY	Mod	1/25/2018	Didn't make FY17 deadline, Obligation year shifted to FY18.
			Project obligated in FY18



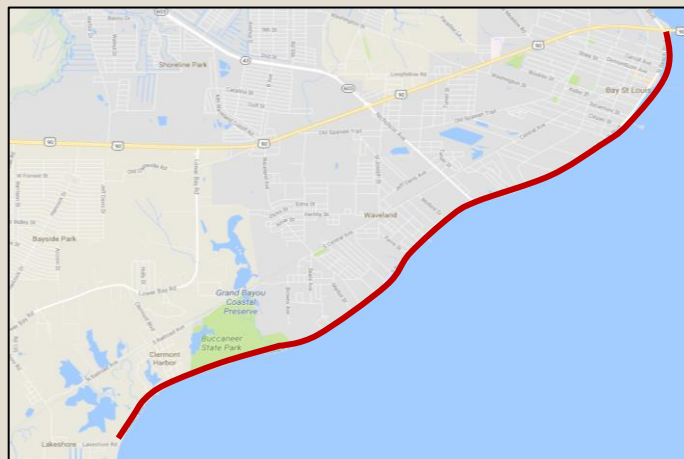
Mississippi Gulf Coast Metropolitan Planning Organization 2017-2020 Transportation Improvement Program (TIP)

County	Hancock	Agency	Hancock Co.	Project Cost	\$45,000	Project #	ST-HAN17
Improvement Type	Pedestrian Access Study					TIP Year	2017
Route/Category	Beach Blvd					Length	8.2 Miles
Termini	Hwy 90 to Lakeshore Dr.						
Project Description	Evaluate opportunities to improve pedestrian access along the beach front						

Fiscal Year	Funding Source	Project Phase	Federal Funds	Local Match	Total Cost
2017	STP-TMA	Study	\$36,000	\$9,000	\$45,000



Action History	Type	Date	Remarks:
Add Project to TIP	Amend	5/25/2017	\$36,000 STP from Study Group
			Project obligated in FY17



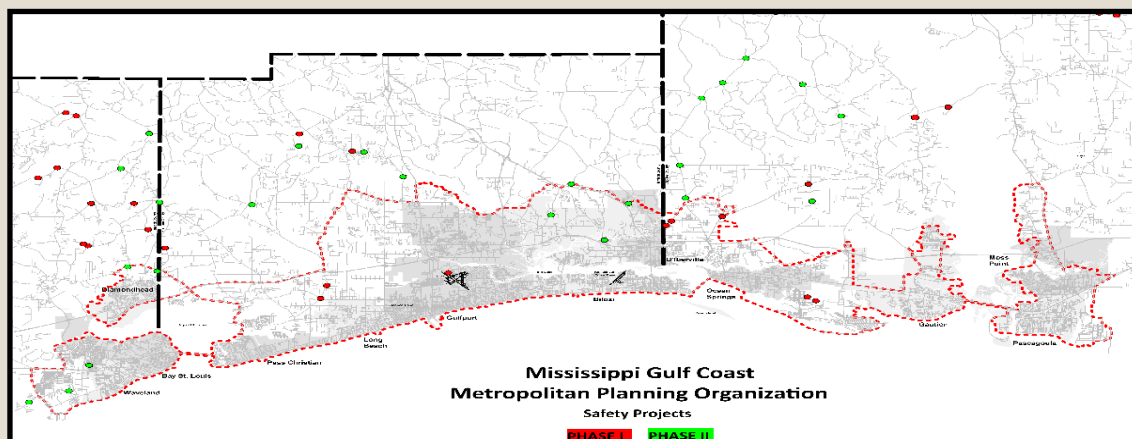
Mississippi Gulf Coast Metropolitan Planning Organization 2017-2020 Transportation Improvement Program (TIP)

County	Tri-County	Agency	GRPC	Project Cost	\$1,050,000	Project #	SF-GRPC17
Improvement Type	Get To B Safety Project Phase 2					TIP Year	17/18
Route/Category	Tri-County Safety Improvements					Length	N/A
Termini	Multiple Location in each county						
Project Description	Safety improvements to Gulf Coast roadways						

Fiscal Year	Funding Source	Project Phase	Federal Funds	Local Match	Total Cost
2017	STP-Safety	PE	\$50,000	\$0	\$50,000
2018	STP-Safety	CON	\$1,000,000	\$0	\$1,000,000



Action History	Type	Date	Remarks:
Safety Project Added	Mod	5/25/2017	\$150,000 STP for PE Phase
			PE phase obligated in FY17
Safety Project Added	Mod	8/31/2017	\$1,000,000 STP for Construction Phase
* Complete site map can be requested by emailing kyarrow@grpc.com			



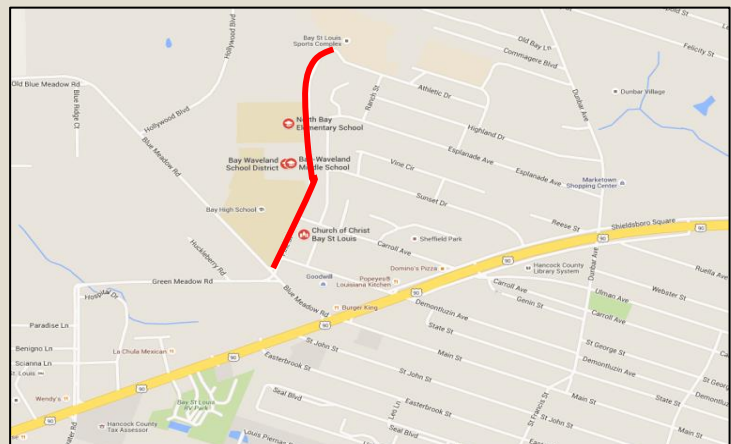
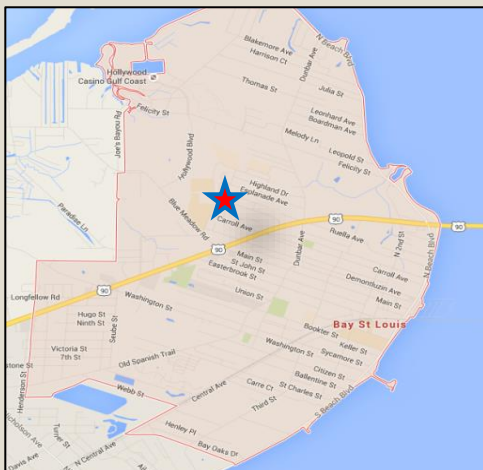
Mississippi Gulf Coast Metropolitan Planning Organization 2017-2020 Transportation Improvement Program (TIP)

County	Hancock	Agency	Bay-Wave SD	Project Cost	\$366,000	Project #	2017BW17
Improvement Type	Sidewalks (Bay-Waveland School District: Bay St Louis)					TIP Year	2018
Route/Category	Pine Street					Length	.55 mi.
Termini	Blue Meadow Road to Athletic Drive						
Project Description	Add new sidewalks from Sports complex past North Bay Elementary and Bay High School						

Fiscal Year	Funding Source	Project Phase	Federal Funds	Local Match	Total Cost
2018	TAP	CON	\$244,000	\$122,000	\$366,000



Action History	Type	Date	Remarks:
Add Project to TIP	Amend	6/25/2015	\$244,000 STP
Change CON FY	Mod	2/23/2017	Move from FY17 to FY18



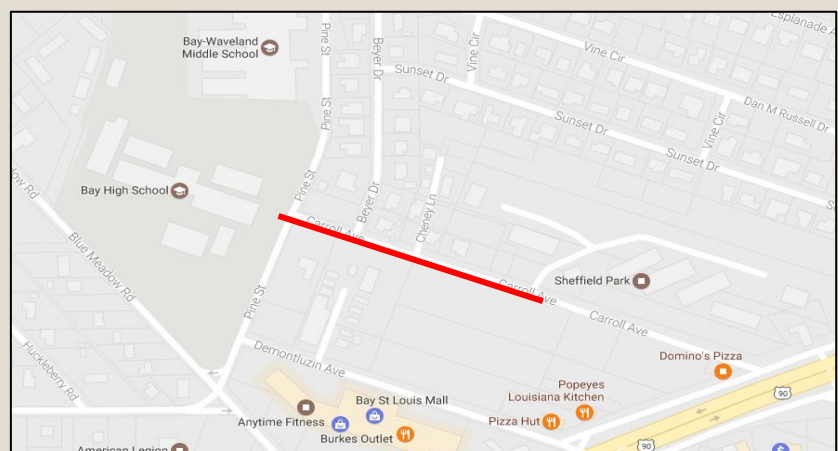
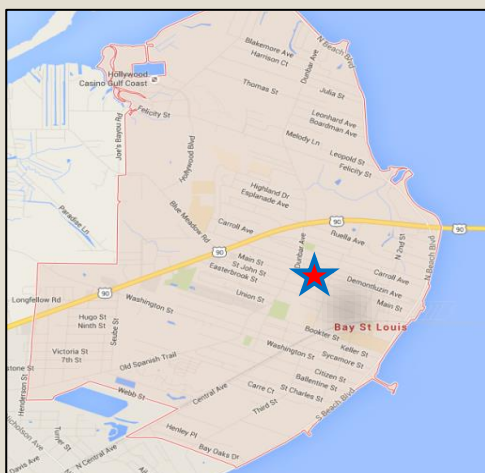
Mississippi Gulf Coast Metropolitan Planning Organization 2017-2020 Transportation Improvement Program (TIP)

County	Hancock	Agency	Bay St Louis	Project Cost	\$125,000	Project #	2014BSL15
Improvement Type	Safe Route to School					TIP Year	2018
Route/Category	Carrol Ave					Length	1000'
Termini	Pine St to Sheffield park Entrance						
Project Description	add new sidewalks to west side of roadway						

Fiscal Year	Funding Source	Project Phase	Federal Funds	Local Match	Total Cost
2018	TAP	CON	\$100,000	\$25,000	\$125,000



Action History	Type	Date	Remarks:
Added to TIP	Amend	3/27/2013	\$100,000 TAP funds
Change CON FY	Mod	11/1/2015	Move from FY15 to FY17
Change CON FY	Mod	8/31/2017	Move from FY17 to FY18



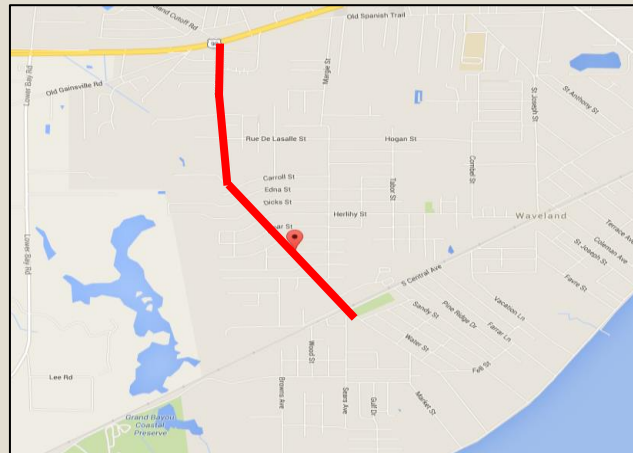
Mississippi Gulf Coast Metropolitan Planning Organization 2017-2020 Transportation Improvement Program (TIP)

County	Hancock	Agency	Waveland	Project Cost	\$1,316,000	Project #	2015WV19
Improvement Type	Sidewalks					TIP Year	2018
Route/Category	Waveland Ave					Length	1.5 mi.
Termini	Hwy 90 to Dubuc Lane						
Project Description	5 foot sidewalks, curb ramps and necessary drainage along east and west sides of Waveland Ave.						

Fiscal Year	Funding Source	Project Phase	Federal Funds	Local Match	Total Cost
2018	STP-TMA	CON	\$1,052,800	\$263,200	\$1,316,000



Action History	Type	Date	Remarks:
Add Project to TIP	Amend	6/25/2015	\$1,052,800 STP
Change CON FY	Mod	2/23/2017	Move from FY19 to FY18
Change Termini	Amend	5/25/2017	Change from Dubuc Lane to the park south of RR tracks
			<i>City decided not to adjust the termini</i>



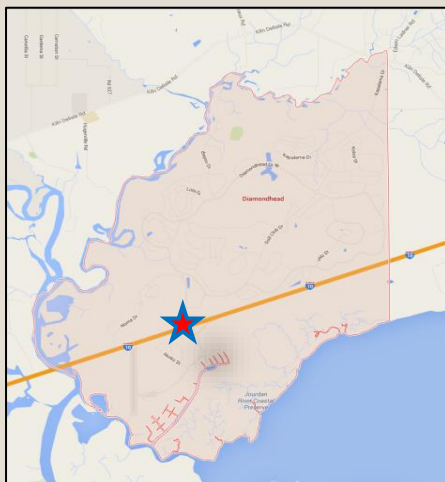
Mississippi Gulf Coast Metropolitan Planning Organization 2017-2020 Transportation Improvement Program (TIP)

County	Hancock	Agency	Diamondhead	Project Cost	\$560,606	Project #	2017DH17
Improvement Type	Interchange Improvements					TIP Year	2018
Route/Category	I-10 on/off ramps					Miles	N/A
Termini	Gex Dr. and Yacht Club Dr.						
Project Description	Install lighting to illuminate I-10 interchange						

Fiscal Year	Funding Source	Project Phase	Federal Funds	Local Match	Total Cost
2018	STP-TMA	CON	\$448,485	\$112,121	\$560,606



Action History	Type	Date	Remarks:
Add Project to TIP	Amend	8/25/2016	\$400,000 STP
Change CON FY	Mod	8/31/2017	Move from FY17 to FY18 (to align with MDOT project)
Add Funds	Mod	12/14/2017	Increase STP by \$48,485, new total is \$448,485
Add Funds	Mod	4/5/2018	Increase STBG by \$89,697, new total is \$538,182.
			This project has maxed out the 20% increase option. No other funds increase will be approved without specific MPO action.



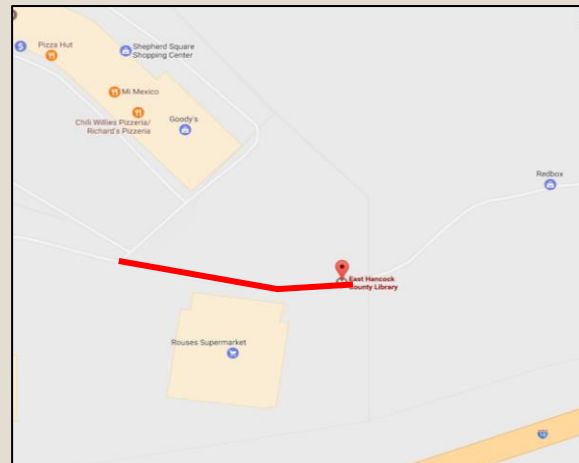
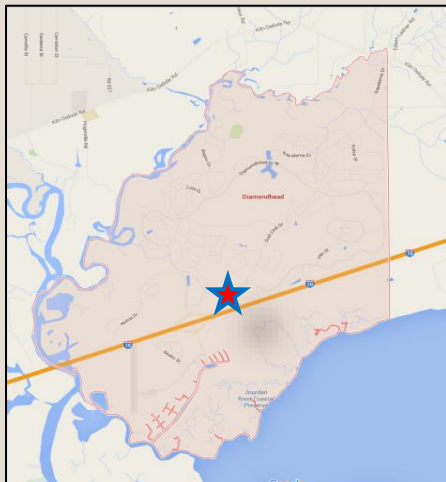
Mississippi Gulf Coast Metropolitan Planning Organization 2017-2020 Transportation Improvement Program (TIP)

County	Hancock	Agency	Diamondhead	Project Cost	\$170,500	Project #	2017DH18(2)
Improvement Type	Bike/Ped Facility					TIP Year	2018
Route/Category	Aloha Drive					Miles	0.1 miles
Termini	From end of Drive at Rouses to Sheppard's Square Medical Center/Public Library						
Project Description	Install widened shoulders with lighting to accommodate biking and walking traffic						

Fiscal Year	Funding Source	Project Phase	Federal Funds	Local Match	Total Cost
2018	TAP	CON	\$136,400	\$34,100	\$170,500



Action History	Type	Date	Remarks:
Add Project to TIP	Amend	2/23/2017	\$136,400 TAP



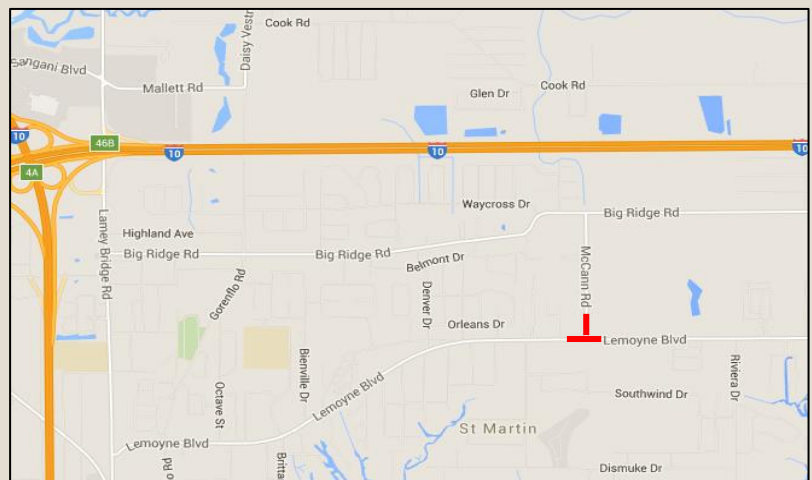
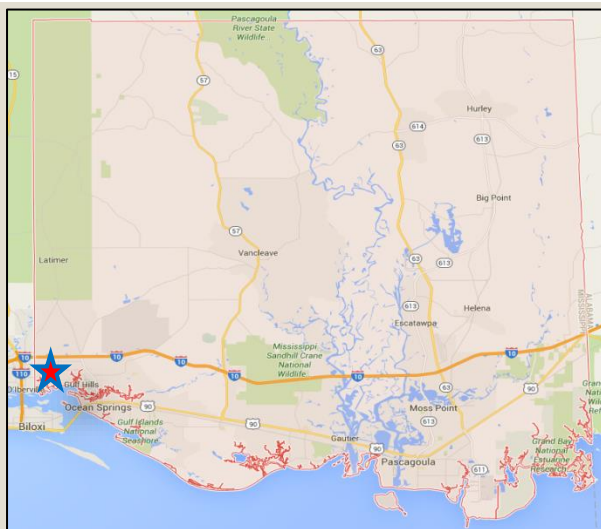
Mississippi Gulf Coast Metropolitan Planning Organization 2017-2020 Transportation Improvement Program (TIP)

County	Jackson	Agency	Jackson Co.	Project Cost	\$450,000	Project #	2017JAX17
Improvement Type	Intersection improvements					TIP Year	2018
Route/Category	Lemoyne Blvd					Length	N/A
Termini	at McCann Road						
Project Description	Install new traffic signal and upgrade sidewalks/curb ramps at intersection						

Fiscal Year	Funding Source	Project Phase	Federal Funds	Local Match	Total Cost
2018	STP-TMA	CON	\$360,000	\$90,000	\$450,000



Action History	Type	Date	Remarks:
Added to TIP	Amend	8/25/2016	\$360,000 STP
Change CON FY	Mod	2/23/2017	Move from FY17 to FY18



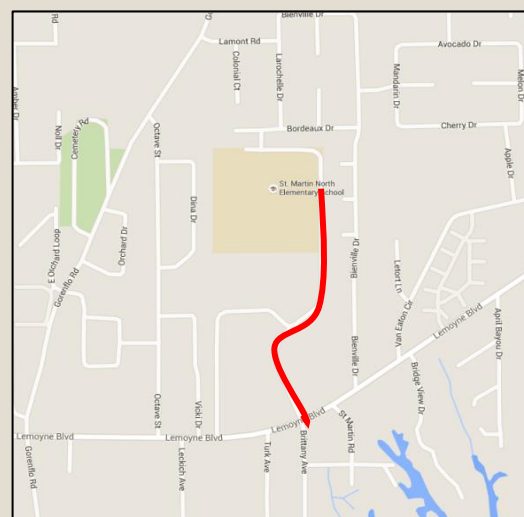
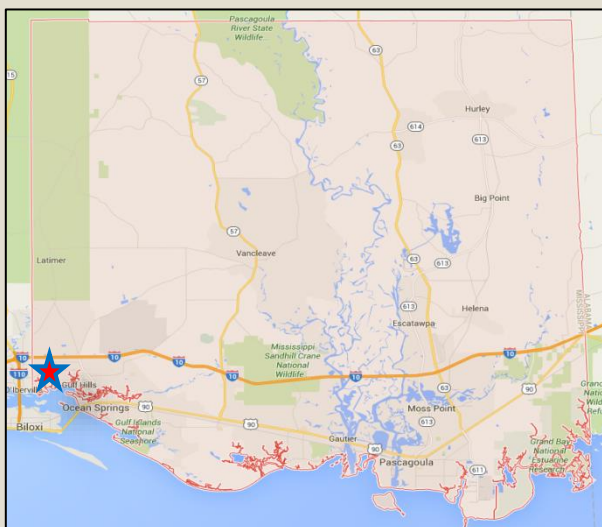
Mississippi Gulf Coast Metropolitan Planning Organization 2017-2020 Transportation Improvement Program (TIP)

County	Jackson	Agency	Jackson Co.	Project Cost	mp	Project #	2017JAX20
Improvement Type	Add Sidewalk					TIP Year	2020
Route/Category	St Martin North Elementary/Yellow Jacket St.					Length	0.4
Termini	Lemoyne Blvd to School Entrance						
Project Description	Add new sidewalk from Lemoyne to school, include pedestrian bridge						

Fiscal Year	Funding Source	Project Phase	Federal Funds	Local Match	Total Cost
2020	TAP	CON	\$160,000	\$40,000	\$200,000



Action History	Type	Date	Remarks:
Added to TIP	Amend	8/25/2016	\$160,000 TAP
Change CON FY	Mod	2/23/2017	Move from FY20 to FY18



Mississippi Gulf Coast Metropolitan Planning Organization 2017-2020 Transportation Improvement Program (TIP)

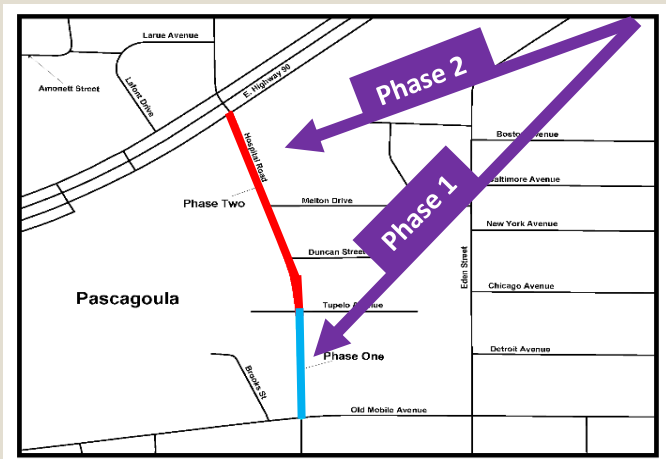
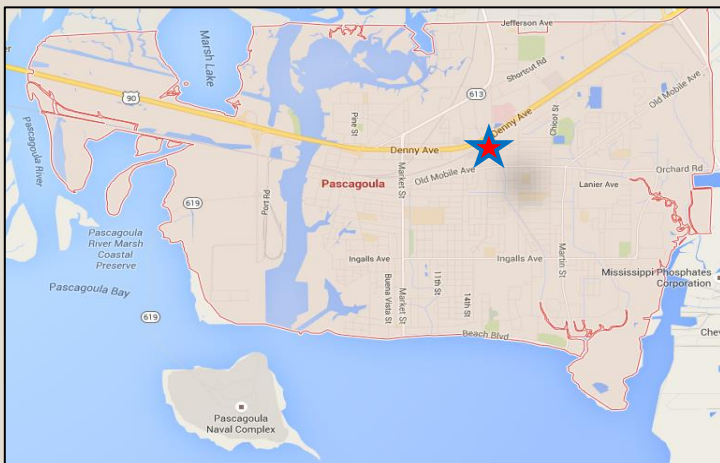
County	Jackson	Agency	Pascagoula	Project Cost	\$2,143,669	Project #	2008PG15(2)
Improvement Type	Reconstruction					TIP Year	2018
Route/Category	Hospital Road - Phase 2					Length	.5 mi.
Termini	Tupelo Ave.to Hwy 90						
Project Description	Add a turn lane to existing 2-lane road, add sidewalks, bike lanes, landscaping and lighting to connect with Phase 1 portion of proejct						

Fiscal Year	Funding Source	Project Phase	Federal Funds	Local Match	Total Cost
2018	STP-Non-Urb	CON	\$1,714,935	\$428,734	\$2,143,669



Action History	Type	Date	Remarks:
Project Added to TIP	Amend	12/11/2008	\$494,400 STP
Increase Funding	Amend	10/24/2013	Add \$1,798,817 STP for total of \$2,293,217 STP
Change CON FY	Mod	9/13/2013	Change From FY15 to FY 16
Split Funding	Mod	10/0/2014	Split funds between FY 17 & FY 18
Change CON FY	Mod	11/0/2015	Move up from FY17/18 to FY16/17
Change CON FY	Mod	8/25/2016	Create Phases: \$900,000 for Ph. 1, \$1,393,217 for Ph. 2
Decrease Funding	Mod	4/27/2017	Subtract \$142,274 for Ph. 1, new total is \$1,250,943
Change CON FY	Mod	8/31/2017	Move from FY17 to FY18
Add Funding	Amend	12/14/2017	Add \$293,852 for Roadway and \$170,140 for RR, total is \$1,714,935

*Photo Note: Blue Portion is Phase 1, red portion is Phase 2.



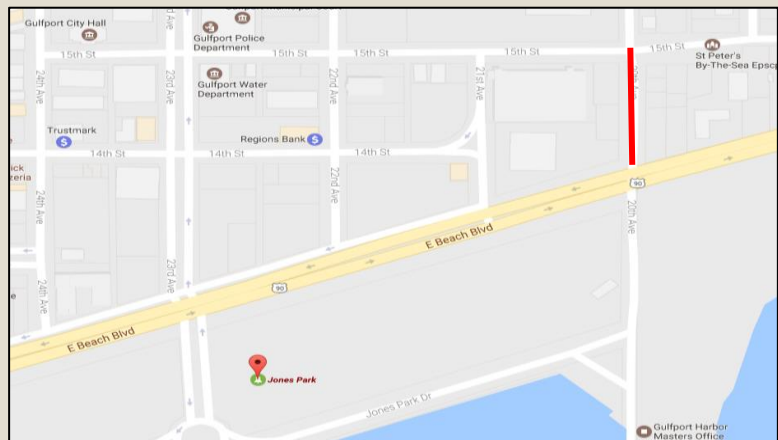
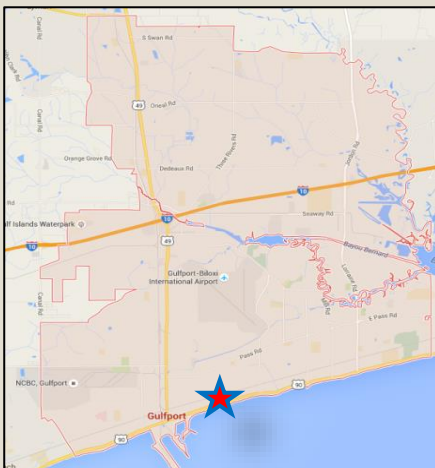
Mississippi Gulf Coast Metropolitan Planning Organization 2017-2020 Transportation Improvement Program (TIP)

County	Harrison	Agency	Gulfport	Project Cost	\$633,962	Project #	BPT-GP18
Improvement Type	Transit and Pedestrian Improvements					TIP Year	2018
Route/Category	20th Ave					Length	0.085
Termini	Hwy 90 to 15th St						
Project Description	Intersection improvements and pedestrian improvements for increase transit traffic						

Fiscal Year	Funding Source	Project Phase	Federal Funds	Local Match	Total Cost
2018	STP-TMA	CON	\$507,169	\$126,793	\$633,962



Action History	Type	Date	Remarks:
Added to TIP	Amend	2/23/2017	\$507,169 STP Bike/Ped/Transit Group



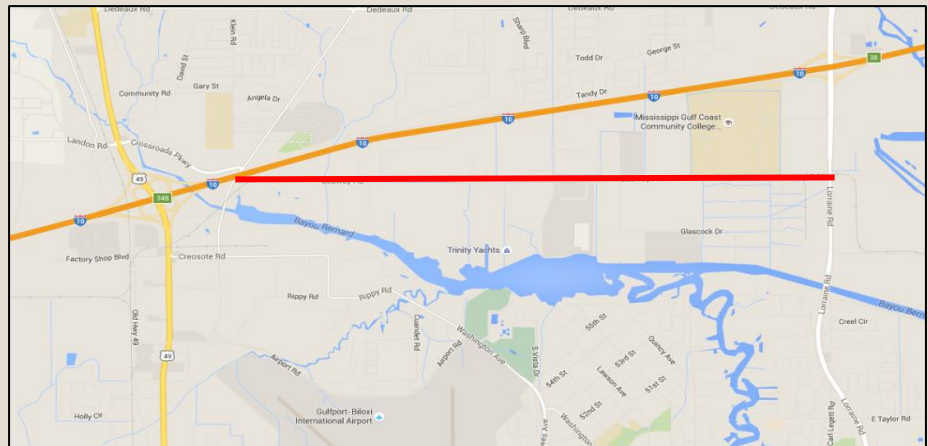
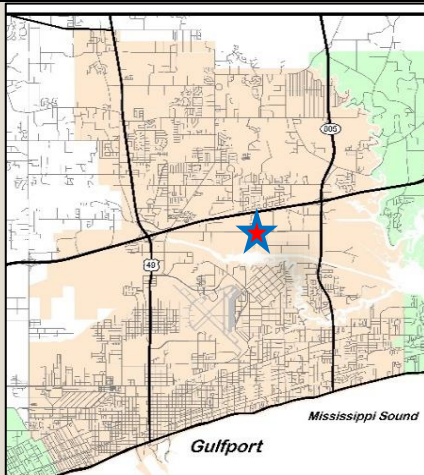
Mississippi Gulf Coast Metropolitan Planning Organization 2017-2020 Transportation Improvement Program (TIP)

County	Harrison	Agency	Gulfport	Project Cost	\$985,380	Project #	2016GP17
Improvement Type	Add multi-use pathway					TIP Year	2018
Route/Category	Seaway Road					Length	3.3 mi.
Termini	Three Rivers to Hwy 605						
Project Description	Install multi-use pathway on southside the length of Seaway Road						

Fiscal Year	Funding Source	Project Phase	Federal Funds	Local Match	Total Cost
2018	TAP	CON	\$788,304	\$197,076	\$985,380



Action History	Type	Date	Remarks:
Added to TIP	Amend	8/25/2016	\$788,304 STP
Change CON FY	Mod	2/23/2017	Move from FY17 to FY18



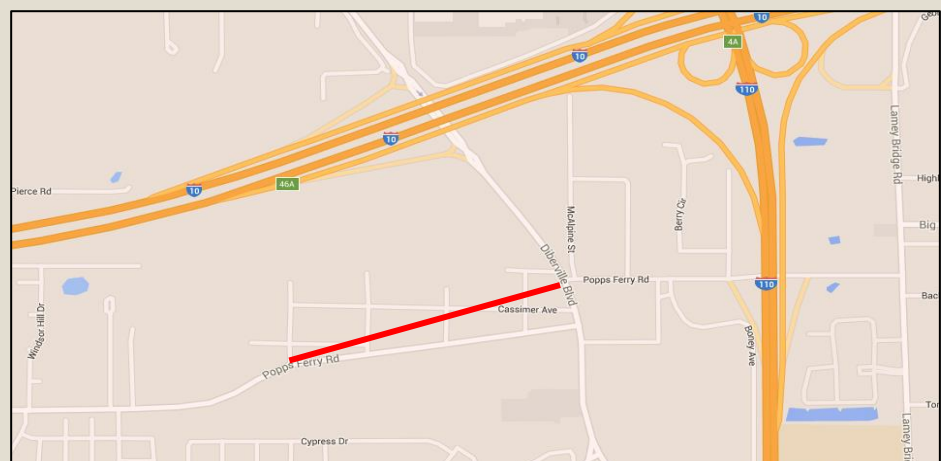
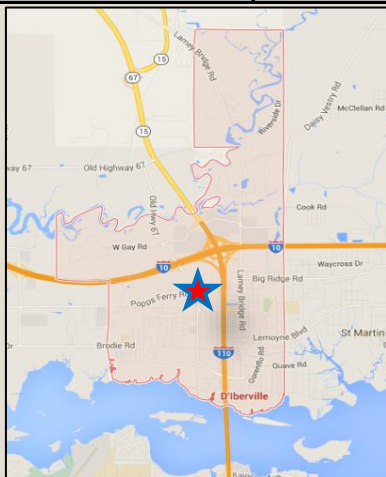
Mississippi Gulf Coast Metropolitan Planning Organization 2017-2020 Transportation Improvement Program (TIP)

County	Harrison	Agency	D'Iberville	Project Cost	\$198,950	Project #	SF-DIB16
Improvement Type	Safety - Intersection					TIP Year	2018
Route/Category	D'Iberville Blvd					Length	N/A
Termini	Boney Ave						
Project Description	Install signal at intersection						

Fiscal Year	Funding Source	Project Phase	Federal Funds	Local Match	Total Cost
2018	STP-TMA	CON	\$198,950	\$0	\$198,950



Action History	Type	Date	Remarks:
Added to TIP	Amend	6/25/2015	Add \$125,000 STP - Safety Group Funds
Change CON FY	Mod	8/25/2016	Move from FY16 to FY17
Change CON FY	Mod	2/23/2017	Move from FY17 to FY18
Add Funds	Mod	12/14/2017	Increase STP by \$73,500, new total is \$198,950



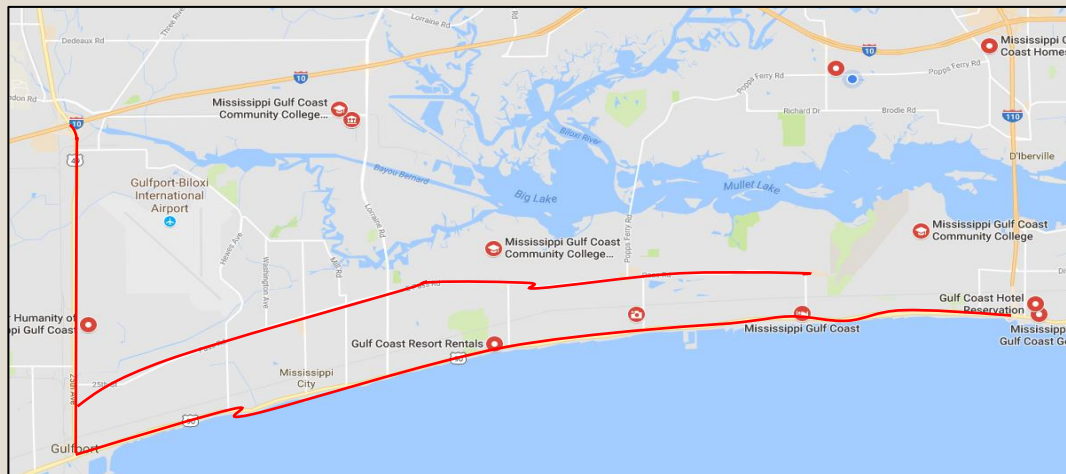
Mississippi Gulf Coast Metropolitan Planning Organization
2017-2020 Transportation Improvement Program (TIP)

County	Tri-County	Agency	GRPC	Project Cost	\$550,000	Project #	SF-GRPC18
Improvement Type	Safety - Signal Prioritization Study					TIP Year	18/19
Route/Category	Hwy 49, Hwy 90, Pass Road					Length	N/A
Termini	100+ locations in Gulfport & Biloxi						
Project Description	Evaluate and develop a signal preemption plan for first responders and transit vehicles						

Fiscal Year	Funding Source	Project Phase	Federal Funds	Local Match	Total Cost
2018	STP-Safety	PE	\$50,000	\$0	\$50,000
2019	STP-Safety	CON	\$500,000	\$0	\$500,000



Action History	Type	Date	Remarks:
Safety Project Added	Mod	5/25/2017	\$50,000 STP for PE Phase
Safety Project Added	Mod	5/25/2017	\$500,000 STP for Construction Phase
		* Complete site map can be requested by emailing kyarrow@grpc.com	



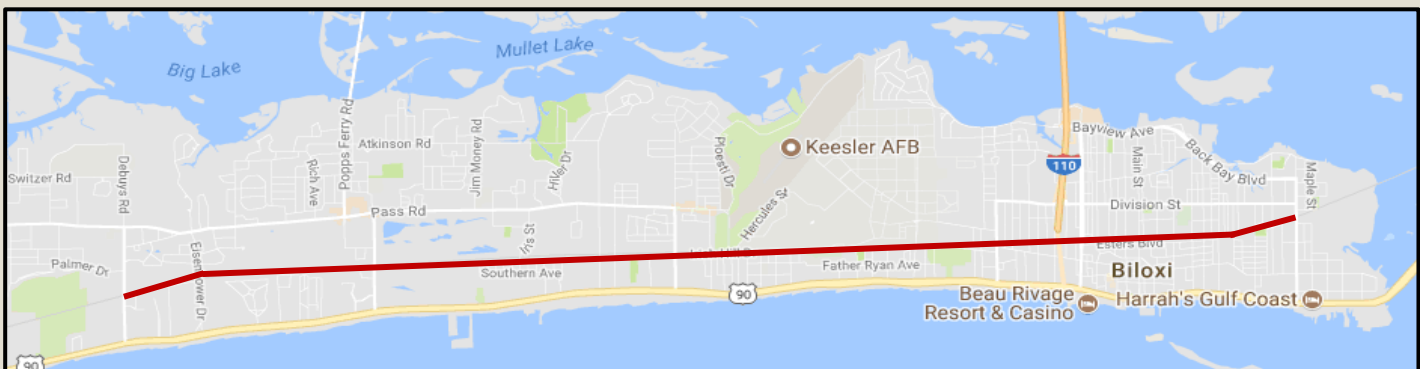
Mississippi Gulf Coast Metropolitan Planning Organization 2017-2020 Transportation Improvement Program (TIP)

County	Harrison	Agency	Biloxi	Project Cost	\$200,000	Project #	2017BIL18
Improvement Type	Rail Corridor Study					TIP Year	18
Route/Category	City of Biloxi CSX track line					Length	8 mi.
Termini	Oak St to Debuys Rd						
Project Description	Safety enhancement study on rail corridor						

Fiscal Year	Funding Source	Project Phase	Federal Funds	Local Match	Total Cost
2018	Study		\$150,000	\$50,000	\$200,000



Action History	Type	Date	Remarks:
Project Addition	Mod	8/31/2017	\$150,000 STP allocated through Safety Group



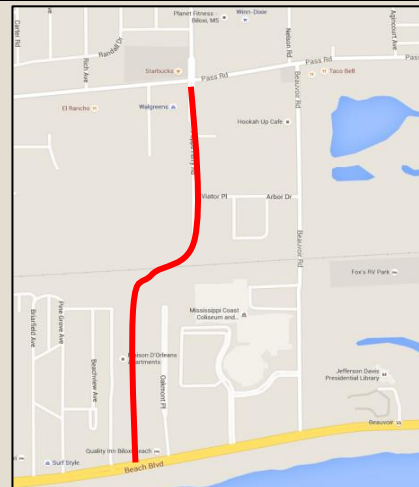
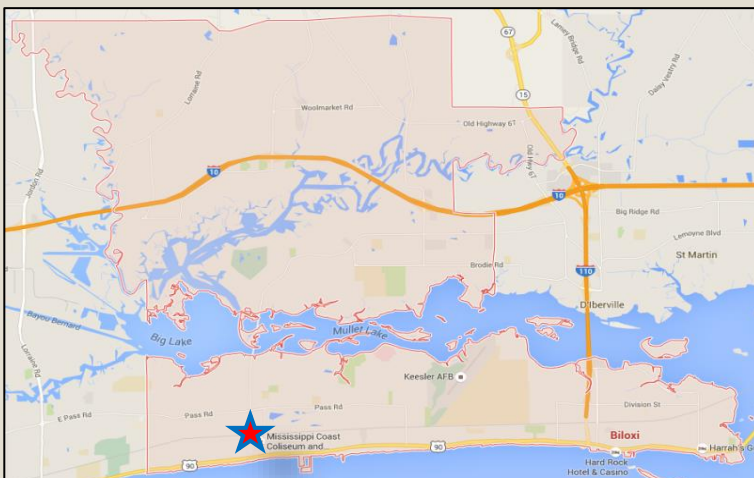
Mississippi Gulf Coast Metropolitan Planning Organization 2017-2020 Transportation Improvement Program (TIP)

County	Harrison	Agency	Biloxi	Project Cost	\$10,437,808	Project #	2007BIL12
Improvement Type	Popp's Ferry Road Extension					TIP Year	19/20
Route/Category	New and reconstruction					Length	.75 mi.
Termini	Pass Road to US 90						
Project Description	New Roadway						

Fiscal Year	Funding Source	Project Phase	Federal Funds	Local Match	Total Cost
2018	Earmark	ROW	\$5,418,718	\$2,315,090	\$7,733,808
2019	STP - TMA	CON	\$1,081,600	\$270,400	\$1,352,000
2020	STP - TMA	CON	\$1,081,600	\$270,400	\$1,352,000



Action History	Type	Date	Remarks:
Project Addition	Amend	11/29/2007	\$2,000,000 STP
Change Termini	Amend	5/7/2011	From "Coliseum to Pass Road" to Pass Road to US 90
Add Earmark	Amend	5/7/2011	ENV-\$550,000(fed) \$137,500(local)/Design \$400,000(fed) \$100,000(local)/ROW \$4,560,000(fed) \$1,140,000(local)/Con \$890,000(fed) \$4,406,000(local)
Add STP funds	Mod	5/7/2011	\$163,200 Administrative Adjustment
Change CON FY	Mod	9/13/2013	Move from FY 2012 to FY 2018
Change CON FY	Mod	10/0/2014	Move from FY 2018 to FY 2019
Change CON FY	Mod	11/0/2015	Move from FY 2019 to FY 2018
Update Earmark	Mod	8/25/2016	Balance of \$5,844,596 - move ROW to FY2017
Change CON FY	Mod	2/23/2017	Advance Construction FY18 and FY19
Change CON FY	Mod	4/27/2017	Shift Advance Construction from FY18/19 to FY19/20
Adjust ROW & CON FY	Mod	1/25/2017	Change ROW phase to FY18 and adjust funding to reflect increased ROW costs being covered by the City. Project CON FY is now FY19. City ROW match is now \$2,315,090.



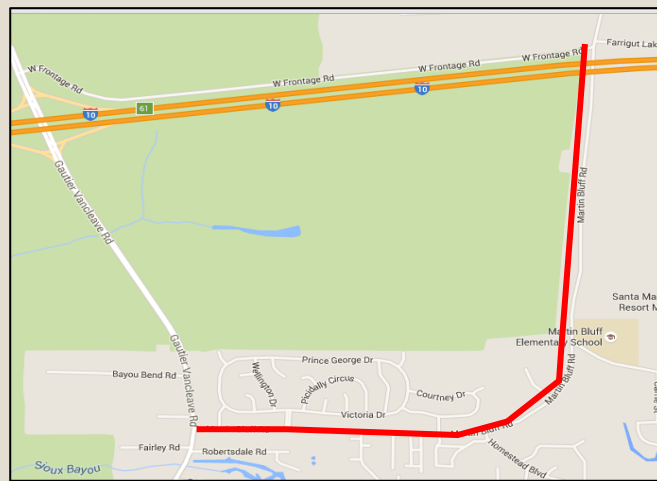
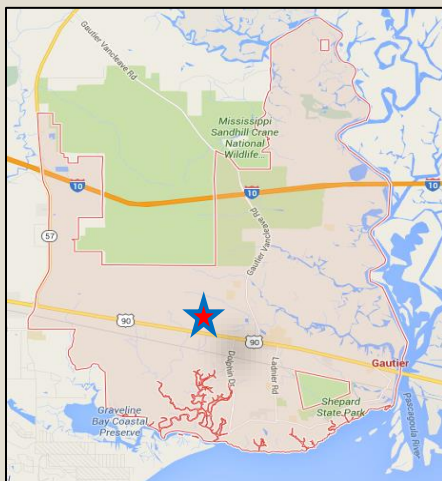
Mississippi Gulf Coast Metropolitan Planning Organization 2017-2020 Transportation Improvement Program (TIP)

County	Jackson	Agency	Gautier	Project Cost	\$4,160,006	Project #	2004GAU12
Improvement Type	Reconstruction					TIP Year	2019
Route/Category	Martin Bluff Road					Length	2.1 mi.
Termini	Gautier-Vancleave Road to Frontage Road						
Project Description	Widening, Bike/Ped and Intersection Improvements						

Fiscal Year	Funding Source	Project Phase	Federal Funds	Local Match	Total Cost
2019	Non-Urb	CON	\$1,136,000	\$416,001	\$4,160,006
2019	STP-TMA	CON	\$528,002		
2020	Non-Urb	CON	\$778,000	\$416,001	
2020	STP-TMA	CON	\$886,002		



Action History	Type	Date	Remarks:
Added to TIP	Amend	6/17/2004	\$900,000 STP
Katrina, project management changes, project scope changes			
Added funding	Amend	12/9/2010	\$936,000 STP & \$1,700,000 earmark
Change ROW FY	Mod	2/10/2011	Earmark from 2010-2011/STP from 2011-2012
Change CON FY	Mod	10/1/2012	Move from FY2012 to FY 2013
Change CON FY	Mod	9/13/2013	Move from FY2013 to FY 2016
Increase Funding	Amend	10/24/2013	Add \$2,392,004 STP - Totaling \$3,328,004 STP
Move/Split FY	Mod	10/1/2014	Advance Construction Split between FY16 & FY17
Add ROW Phase	Mod	5/1/2015	Add ROW - \$3,199,682 Earmark
Change CON FY	Mod	11/1/2015	Move from FY 16/17 to FY 17/18
Change CON FY	Mod	8/25/2016	Move from FY 17/18 to FY 18/19
Change CON FY	Mod	8/31/2017	Remove Advance Construction, all in FY19
Adjust Funding/ Change CON FY	Mod	1/25/2018	Adjust totals to reflect available non-urban and TMA funds. Split project between FY2019 and 2020.



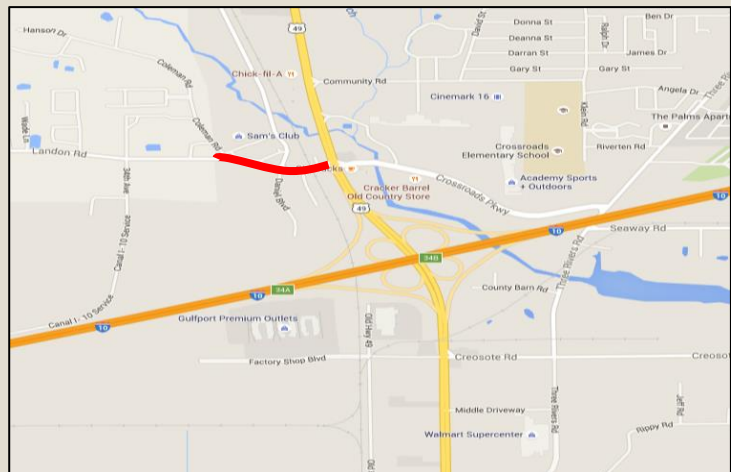
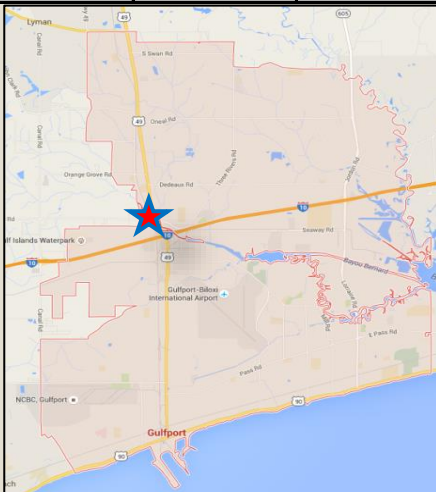
Mississippi Gulf Coast Metropolitan Planning Organization 2017-2020 Transportation Improvement Program (TIP)

County	Harrison	Agency	Gulfport	Project Cost	\$2,760,167	Project #	2015GP19
Improvement Type	Capacity					TIP Year	19/20
Route/Category	Landon Road Ph. 1					Length	.5 mi.
Termini	Hwy 49 to 34th Street						
Project Description	Widen Landon Road from 2 lanes to 4-lane divided w/ bike ped accommodations.						

Fiscal Year	Funding Source	Project Phase	Federal Funds	Local Match	Total Cost
2019	STP-TMA	CON	\$1,000,000	\$250,000	\$1,250,000
2020	STP-TMA	CON	\$1,208,133	\$302,034	\$1,510,167



Action History	Type	Date	Remarks:
Added Project to TIP	Amend	6/25/2015	\$1,000,000 STP
Add CON Funds	Amend	8/25/2016	Add \$1,208,133 STP
Change CON FY	Mod	8/25/2016	Advance Construction FY19 & FY20



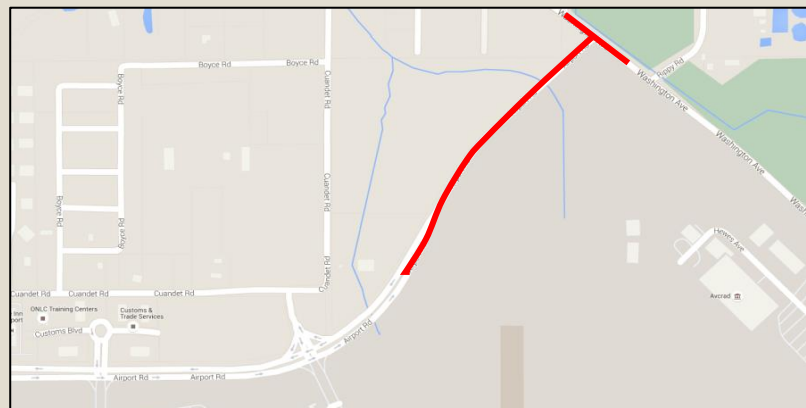
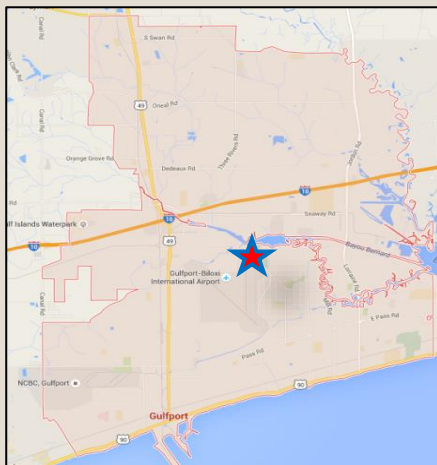
Mississippi Gulf Coast Metropolitan Planning Organization 2017-2020 Transportation Improvement Program (TIP)

County	Harrison	Agency	Gulfport	Project Cost	\$700,000	Project #	2015GP17
Improvement Type	Capacity					TIP Year	2019
Route/Category	Airport Road					Length	.25 mi.
Termini	Washington Ave to the existing 4 lane segment						
Project Description	Widen Airport Road from 2 to 4 lanes and build roundabout at Washington Ave.						

Fiscal Year	Funding Source	Project Phase	Federal Funds	Local Match	Total Cost
2019	STP-TMA	CON	\$550,000	\$150,000	\$700,000



Action History	Type	Date	Remarks:
Added to TIP	Amend	6/25/2015	\$550,000 STP
Change CON FY	Mod	2/23/2017	Move from FY17 to FY19



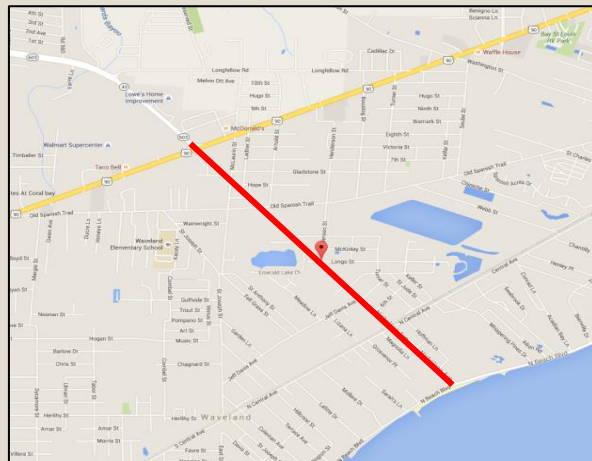
Mississippi Gulf Coast Metropolitan Planning Organization 2017-2020 Transportation Improvement Program (TIP)

County	Hancock	Agency	Waveland	Project Cost	\$1,000,000	Project #	2017WV19
Improvement Type	Overlay and Widening					TIP Year	2019
Route/Category	Nicholson Ave					Length	1.5 mi.
Termini	Hwy 90 to S. Beach Blvd.						
Project Description	Resurfacing and restriping roadway to include widened shoulders for bicycle and pedestrian access						

Fiscal Year	Funding Source	Project Phase	Federal Funds	Local Match	Total Cost
2019	STP-TMA	CON	\$800,000	\$200,000	\$1,000,000



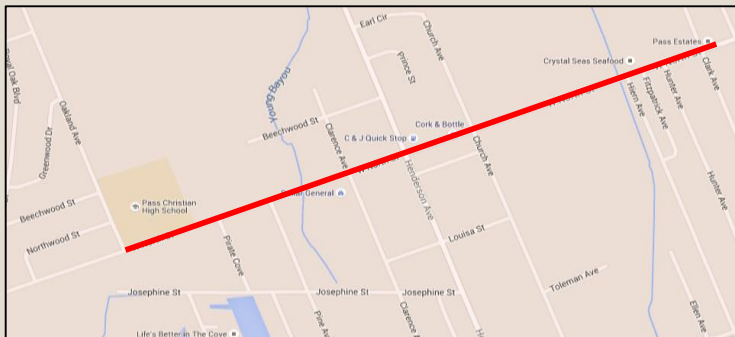
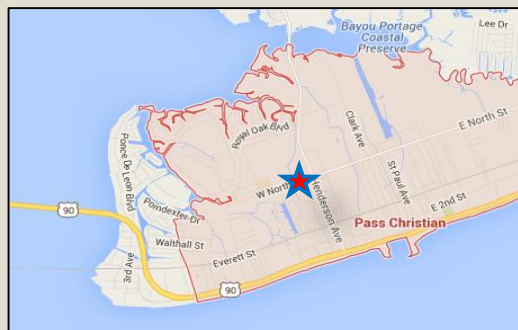
Action History	Type	Date	Remarks:
Add Project to TIP	Amend	8/25/2016	\$800,000 STP



Mississippi Gulf Coast Metropolitan Planning Organization
2017-2020 Transportation Improvement Program (TIP)

County	Harrison	Agency	Pass Christian	Project Cost	\$566,000	Project #	2015PC19
Improvement Type	Sidewalks					TIP Year	2019
Route/Category	North Street					Length	1800 ft
Project Description	Pass Christian High School to Pass Estates						
Project Description	5 foot concrete sidewalk on southside of roadway from fire station to connect with existing sidewalk at Weeping Willow Street						

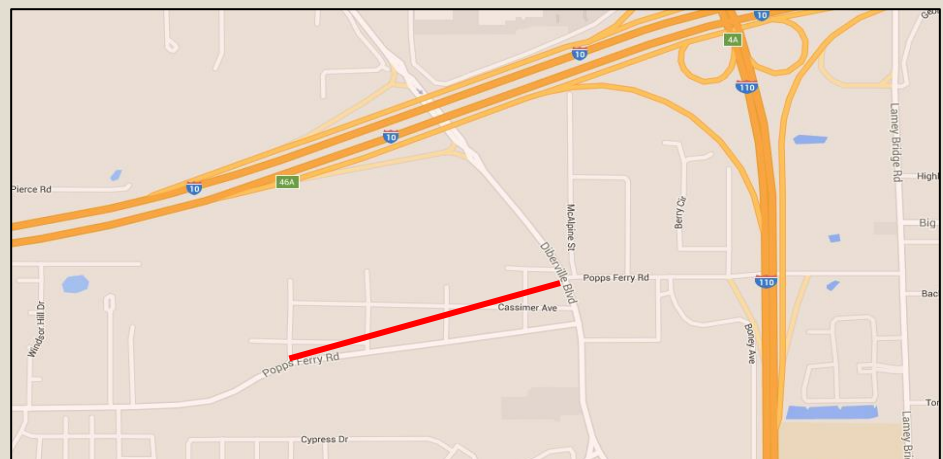
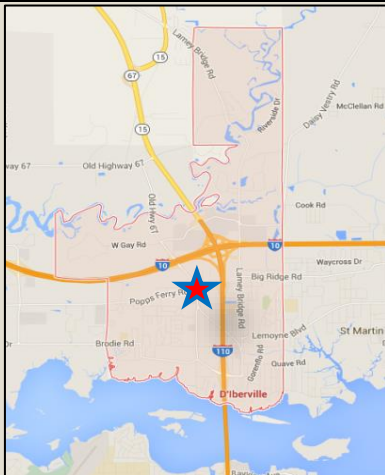
Fiscal Year	Funding Source	Project Phase	Federal Funds	Local Match	Total Cost
2019	STP - TMA	CON	\$452,800	\$113,200	\$566,000

[illegible]

Mississippi Gulf Coast Metropolitan Planning Organization
2017-2020 Transportation Improvement Program (TIP)

County	Harrison	Agency	D'Iberville	Project Cost	\$3,673,473	Project #	2017DIB18
Improvement Type	Realignment					TIP Year	2020
Route/Category	Popp's Ferry Road					Length	.5 mi.
Termini	Belle St to Galeria Parkway/D'Iberville Blvd						
Project Description	Construct new segment to align with Popp's Ferry Road at D'Iberville Blvd/Galleria Parkway						

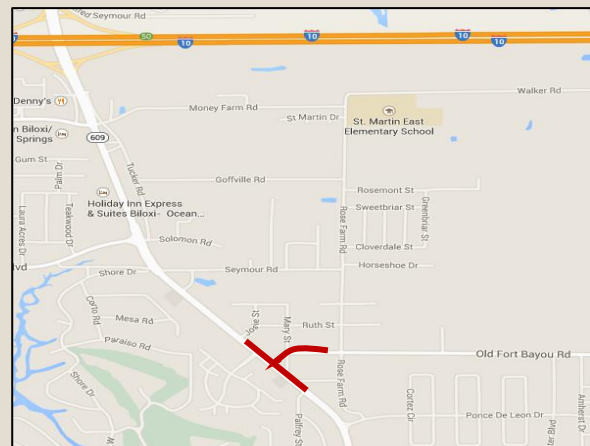
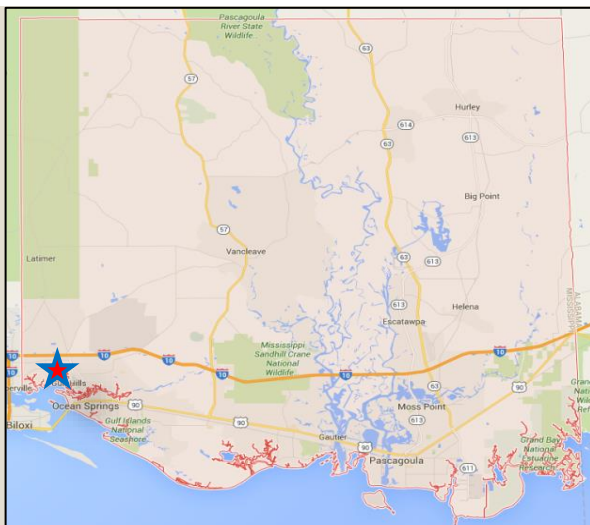
Fiscal Year	Funding Source	Project Phase	Federal Funds	Local Match	Total Cost
2020	STP-TMA	CON	\$2,938,780	\$734,694	\$3,673,474

[illegible]

Mississippi Gulf Coast Metropolitan Planning Organization
2017-2020 Transportation Improvement Program (TIP)

County	Jackson	Agency	Jackson Co.	Project Cost	\$1,867,050	Project #	2013JAX17
Improvement Type	Intersection					TIP Year	2019
Route/Category	Hwy 609 and Old Fort Bayou Road					Length	N/A
Termini	Hwy 609 and Old Fort Bayou Road						
Project Description	Intersection realignment to alleviate congestion. Project includes median, striping, turning lanes, pedestrian crossing and signalization.						

Fiscal Year	Funding Source	Project Phase	Federal Funds	Local Match	Total Cost
2019	STP-TMA	CON	\$1,493,640	\$373,410	\$1,867,050

[illegible]

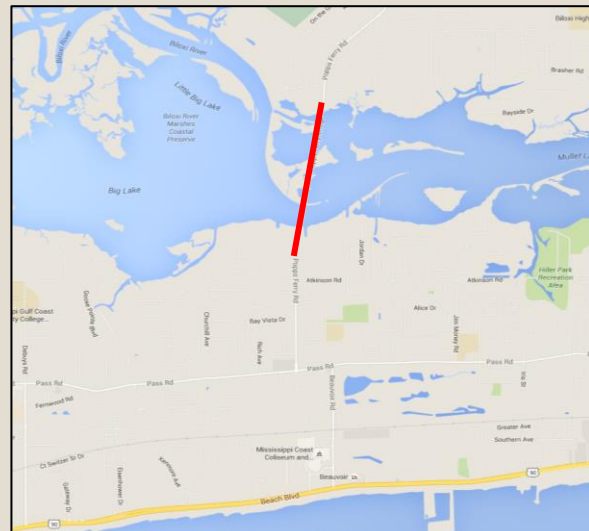
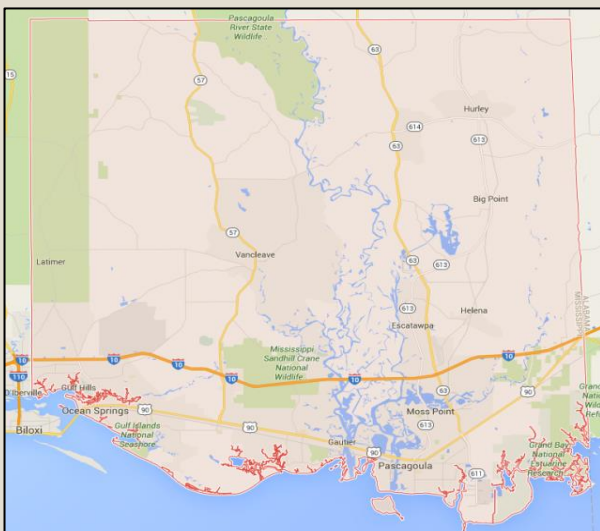
Mississippi Gulf Coast Metropolitan Planning Organization 2017-2020 Transportation Improvement Program (TIP)

County	Harrison	Agency	Biloxi	Project Cost	\$15,000,000	Project #	2010BIL12
Improvement Type	Bridge Replacement					TIP Year	?
Route/Category	Popp's Ferry Bridge					Length	.3 miles
Termini	Bay of Biloxi						
Project Description	Replacement of the bridge						

Fiscal Year	Funding Source	Project Phase	Federal Funds	Local Match	Total Cost
?	Earmark	ENV	\$4,000,000	\$1,000,000	\$5,000,000
?	Earmark	CON	\$8,000,000	\$2,000,000	\$10,000,000



Action History		Type	Date	Remarks:
Added to TIP		Amend	5/21/2009	\$4,000,000 Earmark Funds (Environmental Phase)
Change FY		Mod	10/1/2012	Move from FY12 to FY13
Add Funds		Amend	9/13/2013	Add \$8,000,000 Earmark Funds (Construction Phase)
			8/31/2017	Project review, no year for obligation at this time
				MDOT #104384
				Currently in long range plan, Not scheduled for obligation



Mississippi Gulf Coast MPO
FY2017-2020 Transportation Improvement Program
Grouped Projects

Bicycle, Pedestrian and Transit

FY	Agency	Fund Source	Federal Funds	Local Funds	Total Funds
2017	Gulf Coast LPAs	STP	\$608,566	\$152,141	\$760,707
2018	Gulf Coast LPAs	STP	\$500,000	\$125,000	\$625,000
2019	Gulf Coast LPAs	STP	\$500,000	\$125,000	\$625,000
2020	Gulf Coast LPAs	STP	\$500,000	\$125,000	\$625,000
2021	Gulf Coast LPAs	STP	\$500,000	\$125,000	\$625,000

Safety

FY	Agency	Fund Source	Federal Funds	Local Funds	Total Funds
2017	Gulf Coast LPAs	STP	\$171,256	\$0	\$1,556,300
2018	Gulf Coast LPAs	STP	\$500,000	\$0	\$500,000
2019	Gulf Coast LPAs	STP	\$500,000	\$0	\$500,000
2020	Gulf Coast LPAs	STP	\$500,000	\$0	\$500,000
2021	Gulf Coast LPAs	STP	\$500,000	\$0	\$500,000

MPO Studies/Projects

FY	Agency	Fund Source	Federal Funds	Local Funds	Total Funds
2017	Gulf Coast LPAs	STP	\$960,209	\$240,052	\$1,200,261
2018	Gulf Coast LPAs	STP	\$400,000	\$100,000	\$500,000
2019	Gulf Coast LPAs	STP	\$400,000	\$100,000	\$500,000
2020	Gulf Coast LPAs	STP	\$400,000	\$100,000	\$500,000
2021	Gulf Coast LPAs	STP	\$400,000	\$100,000	\$500,000

Transportation Alternatives Program (TAP)

FY	Agency	Fund Source	Federal Funds	Local Funds	Total Funds
2017	Gulf Coast LPAs	TAP	\$1,505,282	\$376,320	\$1,881,602
2018	Gulf Coast LPAs	TAP	\$310,730	\$77,682	\$388,412
2019	Gulf Coast LPAs	TAP	\$310,730	\$77,682	\$388,412
2020	Gulf Coast LPAs	TAP	\$310,730	\$77,682	\$388,412
2021	Gulf Coast LPAs	TAP	\$310,730	\$77,682	\$388,412



Mississippi Gulf Coast MPO
FY2017-2020 Transportation Improvement Program (TIP)
Federal Transit Administration (FTA) Funds

Num.	Description	Grantee	Year Apportioned		Four Year Program Planned				Total Est. Cost	Comments /Carry Over
					2017	2018	2019	2020		
Sec 5307	Operating Assistance	CTA		Federal	\$2,327,500	\$2,350,000	\$2,375,000	\$2,400,000		
				Local	\$2,327,500	\$2,350,000	\$2,375,000	\$2,400,000		
				Admin	\$0	\$0	\$0	\$0		
				Total	\$4,655,000	\$4,700,000	\$4,750,000	\$4,800,000		

Num.	Description	Grantee	Year Apportioned		Four Year Program Planned				Total Est. Cost	Comments /Carry Over
					2017	2018	2019	2020		
Sec 5307	Preventive Maintenance	CTA		Federal	\$1,330,400	\$1,360,000	\$1,400,000	\$1,440,000		(June 2016) Increase FY17 from \$1,040,000 to \$1,330,400
				Local	\$332,600	\$340,000	\$350,000	\$360,000		
				Admin	\$0					
				Total	\$1,663,000	\$1,700,000	\$1,750,000	\$1,800,000		

Num.	Description	Grantee	Year Apportioned		Four Year Program Planned				Total Est. Cost	Comments /Carry Over
					2017	2018	2019	2020		
Sec 5307	In-House Planning	CTA		Federal	\$300,000	\$300,000	\$300,000	\$300,000		
				Local	\$75,000	\$75,000	\$75,000	\$75,000		
				Admin	\$0	\$0	\$0	\$0		
				Total	\$375,000	\$375,000	\$375,000	\$375,000		

Num.	Description	Grantee	Year Apportioned		Four Year Program Planned				Total Est. Cost	Comments /Carry Over
					2017	2018	2019	2020		
Sec 5307	Computer Equipment	CTA		Federal	\$16,000	\$16,000	\$16,000	\$16,000		
				Local	\$4,000	\$4,000	\$4,000	\$4,000		
				Admin	\$0	\$0	\$0	\$0		
				Total	\$20,000	\$20,000	\$20,000	\$20,000		

Num.	Description	Grantee	Year Apportioned		Four Year Program Planned				Total Est. Cost	Comments /Carry Over
					2017	2018	2019	2020		
Sec 5307	Shop Equipment	CTA		Federal	\$16,000	\$16,000	\$16,000	\$16,000		
				Local	\$4,000	\$4,000	\$4,000	\$4,000		
				Admin	\$0	\$0	\$0	\$0		
				Total	\$20,000	\$20,000	\$20,000	\$20,000		

Num.	Description	Grantee	Year Apportioned		Four Year Program Planned				Total Est. Cost	Comments /Carry Over
					2017	2018	2019	2020		
Sec 5307	ADA Operating Expenses	CTA		Federal	\$320,000	\$340,000	\$360,000	\$380,000		
				Local	\$80,000	\$85,000	\$90,000	\$95,000		
				Admin	\$0	\$0	\$0	\$0		
				Total	\$400,000	\$425,000	\$450,000	\$475,000		

Num.	Description	Grantee	Year Apportioned		Four Year Program Planned				Total Est. Cost	Comments /Carry Over
					2017	2018	2019	2020		
Sec 5307	Associated Transit Improvements	CTA		Federal	\$40,000	\$80,000	\$80,000	\$80,000		
				Local	\$10,000	\$20,000	\$20,000	\$20,000		
				Admin	\$0	\$0	\$0	\$0		
				Total	\$50,000	\$100,000	\$100,000	\$100,000		

Num.	Description	Grantee	Year Apportioned		Four Year Program Planned				Total Est. Cost	Comments /Carry Over
					2017	2018	2019	2020		
Sec 5307	Facility Rehab & Renovations	CTA		Federal	\$160,000	\$160,000	\$160,000	\$160,000		
				Local	\$40,000	\$40,000	\$40,000	\$40,000		
				Admin	\$0	\$0	\$0	\$0		
				Total	\$200,000	\$200,000	\$200,000	\$200,000		

Num.	Description	Grantee	Year Apportioned		Four Year Program Planned				Total Est. Cost	Comments /Carry Over
					2017	2018	2019	2020		
Sec 5307	Purchase Office Equipment	CTA		Federal	\$8,000	\$8,000	\$8,000	\$8,000		
				Local	\$2,000	\$2,000	\$2,000	\$2,000		
				Admin	\$0	\$0	\$0	\$0		
				Total	\$10,000	\$10,000	\$10,000	\$10,000		

Num.	Description	Grantee	Year Apportioned		Four Year Program Planned				Total Est. Cost	Comments /Carry Over
					2017	2018	2019	2020		
Sec 5307	Purchase Fare Box Equipment	CTA		Federal	\$40,000	\$40,000	\$40,000	\$40,000		
				Local	\$10,000	\$10,000	\$10,000	\$10,000		
				Admin	\$0	\$0	\$0	\$0		
				Total	\$50,000	\$50,000	\$50,000	\$50,000		

Num.	Description	Grantee	Year Apportioned		Four Year Program Planned				Total Est. Cost	Comments /Carry Over
					2017	2018	2019	2020		
Sec 5307	Purchase Communication Equipment	CTA		Federal	\$80,000	\$80,000	\$80,000	\$80,000		
				Local	\$20,000	\$20,000	\$20,000	\$20,000		
				Admin	\$0	\$0	\$0	\$0		
				Total	\$100,000	\$100,000	\$100,000	\$100,000		

Num.	Description	Grantee	Year Apportioned		Four Year Program Planned				Total Est. Cost	Comments /Carry Over
					2017	2018	2019	2020		
Sec 5307 or Sec 5339	Purchase Revenue Vehicles	CTA		Federal	\$400,000	\$400,000	\$400,000	\$400,000		
				Local	\$100,000	\$100,000	\$100,000	\$100,000		
				Admin	\$0	\$0	\$0	\$0		
				Total	\$500,000	\$500,000	\$500,000	\$500,000		

Num.	Description	Grantee	Year Apportioned		Four Year Program Planned				Total Est. Cost	Comments /Carry Over
					2017	2018	2019	2020		
Sec 5307	Purchase Support Vehicles	CTA		Federal	\$36,000	\$36,000	\$36,000	\$36,000		
				Local	\$9,000	\$9,000	\$9,000	\$9,000		
				Admin	\$0	\$0	\$0	\$0		
				Total	\$45,000	\$45,000	\$45,000	\$45,000		

Num.	Description	Grantee	Year Appportioned		Four Year Program Planned				Total Est. Cost	Comments /Carry Over
					2017	2018	2019	2020		
Sec 5307	JARC Purchased Transportation	CTA		Federal	\$380,000	\$400,000	\$420,000	\$450,000		(June 2016) Increase FY17 from \$365,000 to \$380,000
				Local	\$0	\$0	\$0	\$0		
				Admin	\$0	\$0	\$0	\$0		
				Total	\$380,000	\$400,000	\$420,000	\$450,000		


Num.	Description	Grantee	Year Appportioned		Four Year Program Planned				Total Est. Cost	Comments /Carry Over
					2017	2018	2019	2020		
Sec 5310	New Freedom Services	CTA		Federal	\$672,000	\$360,000	\$360,000	\$360,000		(June 2016) Increase FY17 from \$190,000 to \$672,000
				Local	\$168,000	\$90,000	\$90,000	\$90,000		
				Admin	\$0					
				Total	\$840,000	\$450,000	\$450,000	\$450,000		

Num.	Description	Grantee	Year Appportioned		Four Year Program Planned				Total Est. Cost	Comments /Carry Over
					2017	2018	2019	2020		
Sec 5307	Mobility Manager for Transit Outreach and Awareness	CTA		Federal	\$60,000	\$60,000	\$60,000	\$60,000		(June 2016) Increase FY17 from \$40,000 to \$60,000
				Local	\$15,000	\$15,000	\$15,000	\$15,000		
				Admin	\$0	\$0	\$0	\$0		
				Total	\$75,000	\$75,000	\$75,000	\$75,000		

Num.	Description	Grantee	Year Appportioned		Four Year Program Planned				Total Est. Cost	Comments /Carry Over
					2017	2018	2019	2020		
Sec 5307	Replacement Mobile Surveillance Equipment	CTA		Federal	\$128,000	\$80,000	\$80,000	\$80,000		Added to TIP June 2014
				Local	\$32,000	\$20,000	\$20,000	\$20,000		
				Admin	\$0					
				Total	\$160,000	\$100,000	\$100,000	\$100,000		

Num.	Description	Grantee	Year Appportioned		Four Year Program Planned				Total Est. Cost	Comments /Carry Over
					2017	2018	2019	2020		
Sec 5307	Expansion of the Gulfport Transit Center Intermodal Hub (NEPA included)	CTA		Federal	\$6,676,000	\$0	\$0	\$0		*Added to TIP June 2014. *Move and split \$6,560,000 in FY15 to FY16 & FY17 (5-2015) *(June 2016)Increase FY17 from \$3,280,000 to \$6,676,000
				Local	\$1,669,000	\$0	\$0	\$0		
				Admin	\$0	\$0	\$0	\$0		
				Total	\$8,345,000	\$0	\$0	\$0		

Num.	Description	Grantee	Year Appportioned		Four Year Program Planned				Total Est. Cost	Comments /Carry Over
					2017	2018	2019	2020		
Sec 5339 TIGER Other	Gulfport Hwy 90 Tram Bridge Project	CTA		Federal	\$7,884,800	\$0	\$0	\$0		Added to TIP June 2016
				Local	\$1,971,200	\$0	\$0	\$0		
				Admin	\$0	\$0	\$0	\$0		
				Total	\$9,856,000	\$0	\$0	\$0		

	<h2 style="margin: 0;">Booking Summary</h2> <h3 style="margin: 10px 0 0 0;">Ad# 1592592</h3>
---	--

Booking # 1592592

Order Number: **Transporta Imp. Prog**
 Sort Caption:
 Start Date: **8/17/2017**
 End Date: **8/17/2017**
 Tax Amount: **\$0.00**
 Total Cost: **\$28.08**
 Amount Paid: **\$0.00**
 Balance Due: **\$28.08**
 Received Date: 12/29/1899
 Salesperson: claux

Name: **GULF REGIONAL PLANNING**
 Phone: **(228) 207-7383**
 Address: 1635 POPPS FERRY ROAD
 BILOXI, MS. 39532
 Email: **Lnations@grpc.com**
 Debtor Account: L000341

Ad Text:

PUBLIC NOTICE In accordance with 23 CFR 450, Gulf Regional Planning Commission, the Mississippi Gulf Coast MPO, is providing public notice of proposed amendment(s) to the FY17-20 Transportation Improvement Program (TIP). The 10-day public review and comment period is set for August 17th - August 27th, 2017, which complies with the MPO's Public Participation Plan as well as FTA Section 5307 POP Notice requirements. The proposed amendments include four project removals: 1. Diamondhead, Removal of Golf Club Drive sidewalk project 2. Diamondhead, Removal of Golf Club Drive roundabout project 3. Diamondhead, Removal of Noma Drive multi-use pathway project 4. Biloxi, Removal of sidewalk project on Reynoir and Jackson Streets The Draft TIP reflecting these changes is available for public review at www.grpc.com. GRPC prohibits discrimination in all of its programs, services and activities. Public participation is solicited without regard to race, color, national origin, age, religion, disability or other protected status. Persons who require assistance under the Americans With Disabilities Act (ADA) should contact MPO staff at

least 5 business days prior to the end of this scheduled comment period. Submit accommodation requests, thoughts and feedback by email to contactus@grpc.com, by phone to 228-864-1167 x218, or to the GRPC/MPO offices located at 1635-G Popps Ferry Road, Biloxi MS 39532. ADV17,1THU

Total Number of Insertions: 1

Run Schedule: SUN:17Aug2017
Classification: Public Notices
Style: Standard Legal
Ad Size: 1 x 4.8 inches
Line Count: 57
Reply Box: NONE


Ins. Dates: 8/17/2017

Pandora Radio - List... x Gulf Regional Planning C x SurveyMonkey Analyze x BEVERAGE SERVICE Re... x Percentage Calculator x Transportation Improver x Stephanie

www.grpc.com


Gulf Regional Planning Commission Customize 7 New Edit Page SEO Howdy, saplancich

PONT SIZE AAA f Select Language



Gulf Regional Planning Commission

Home About GRPC GRPC Planning MPO Programs Maps & Downloads Public Information











MS Gulf Coast Metropolitan Planning Organization

CLICK HERE TO VIEW TIP INFORMATION

View and provide comment on proposed amendments to the Transportation Improvement Program (TIP)

Our Programs

 2017 SAC Conference
 Program & Project Map
 MPO Planning Documents
 Live Traffic Cams
 Traffic Count Program
 Apartment Survey
 Get To B Safety
 Plan for Opportunity


12:31 PM 8/17/2017

Pandora Radio - List... x Transportation Improver x SurveyMonkey Analyze x BEVERAGE SERVICE Re... x Percentage Calculator x Transportation Improver x Stephanie

www.grpc.com/mpo-plans/tip/

Gulf Regional Planning Commission Customize 7 New Edit Page SEO Howdy, saplancich

PONT SIZE AAA f Select Language



Gulf Regional Planning Commission

Home About GRPC GRPC Planning MPO Programs Maps & Downloads Public Information

Transportation Improvement Program (TIP)

[FY2017-2020 TIP](#)
[TIP HANDBOOK](#)
[APPLICATION MATERIALS](#)

PUBLIC NOTICE

[View the Draft TIP Here](#)

The MS Gulf Coast MPO is proposing amendments from the FY2017-2020 Transportation Improvement Program. The 10-day public review and comment period is August 17th – August 27th, 2017, which complies with the MPO's Public Participation Plan, as well as FTA Section 5307 POP Notice requirements. The proposed project removals include: 1. Diamondhead, Removal of Gold Club Drive sidewalk project, 2. Diamondhead, Removal of Golf Club Drive roundabout project, 3. Diamondhead, Removal of Noma Drive multi-use pathway project, and 4. Biloxi, Removal of sidewalk project on Reynoir and Jackson Streets.

GRPC prohibits discrimination in all of its programs, services and activities. Public participation is solicited without regard to race, color, national origin, age, religion, disability or other protected status. Persons who require assistance under the Americans With Disabilities Act (ADA) should contact MPO staff at least 5 business days prior to the end of this scheduled comment period. Submit accommodation requests, thoughts and feedback by email to contactus@grpc.com, by phone to 228-864-1167 x218, or to the GRPC/MPO offices located at 1635-G Poppys Ferry Road, Biloxi MS 39532.

What is the TIP?

The Transportation Improvement Program (TIP) is a financially constrained four-year program for addressing short-term transportation priorities that are consistent with the area's long-range metropolitan transportation plan (MTP). The TIP allocates the limited transportation resources among the various capital and operating needs of the area, based on locally developed priorities.

What role does the MPO play?

12:30 PM 8/17/2017



August 31, 2018

Poll Vote of the Transportation Policy Committee (TPC)

TIP AMENDMENTS

Aye	Nay	Abstain	Motion Description
			<u>Diamondhead</u> , Removal of Gold Club Drive sidewalk project from Country Club to Kapalama Drive
			<u>Diamondhead</u> , Removal of Golf Club Drive roundabout installation project
			<u>Diamondhead</u> , Removal of Noma Drive multi-use pathway project from City Hall to ball park
			<u>Biloxi</u> , Removal of sidewalk improvement project on Reynoir and Jackson Streets

TIP HANDBOOK UPDATES

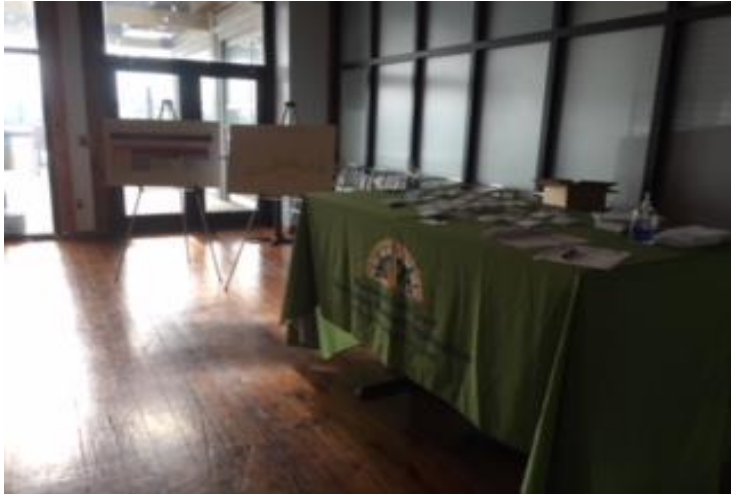
Aye	Nay	Abstain	Motion Description
			The TCC recommends that the TIP Handbook and other MPO documents be amended to allocate MPO STP funding for new projects once per year instead of every 6 months. The "Year 1" update will include a <i>Call for Projects</i> to develop a new TIP and allocate 2 years of STP funding. The "Year 2" TIP Amendment process will include a <i>Call for Projects</i> to consider the addition of new projects based on availability of STP funds. Other eligible amendments and modifications can take place quarterly.

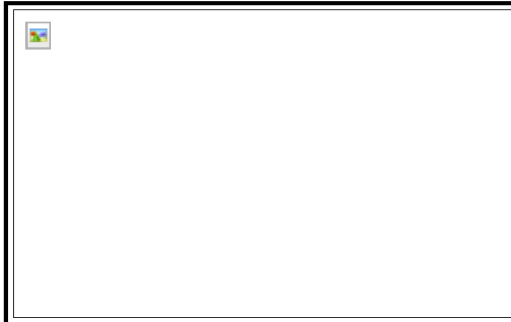
Print Your Name _____

Jurisdiction or Agency _____

Date _____

Signature _____



**Booking Summary****Ad # 1596300****Booking # 1596300**

Order Number: **TIP**
Sort Caption:
Start Date: **12/14/2017**
End Date: **12/14/2017**
Tax Amount: **\$0.00**
Total Cost: **\$22.56**
Amount Paid: **\$0.00**
Balance Due: **\$22.56**
Received Date: **12/29/1899**
Salesperson: **claux**

Name: **GULF REGIONAL PLANNING**
Phone: **(228) 207-7383**
Address: **1635 POPPS FERRY ROAD**
BILOXI, MS. 39532
Email: **Lnations@grpc.com**
Debtor Account: **L000341**

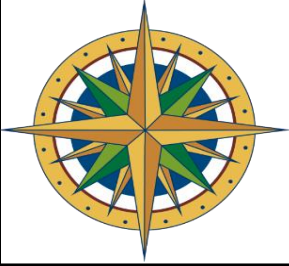
Ad Text:

In accordance with 23 CFR 450, the Gulf Regional Planning Commission serving as staff for the Mississippi Gulf Coast MPO, is providing Public Notice of proposed amendment(s) to the 2017-2020 Transportation Improvement Program (TIP). The public review and comment period is set for December 14th to January 12th. The Proposed Amendment includes increasing federal STP funding for the City of Pascagoula's Hospital Road project from \$2,507,709 to \$3,027,406. Contact MPO staff for more information on this amendment and for other questions related to the regional transportation planning process. GRPC prohibits discrimination in all of its program, service and activities. Public participation is solicited without regard to race, color, national origin, age, sex, religion, disability or other protected status. Persons who require assistance under the ADA Act should contact the MPO at least (5) business days before the end of the review and comment period. Phone: 228-864-1167; Email: contactus@grpc.com; Web: www.grpc.com; or Mail to 1635 Popps Ferry Rd Suite G, Biloxi, MS 39532
ADV14,1THU

Total Number of Insertions: 1

Run Schedule: SUN:14Dec2017
Classification: Public Notices
Style: Standard Legal
Ad Size: 1 x 3.55 inches
Line Count: 42
Reply Box: NONE

Ins. Dates: 12/14/2017

APPENDIX B**MS Gulf Coast TIP: Updates, Amendments and Modifications Tracker****October 2013 Amendments/Modifications:**

- Gulfport – Pass Road Traffic Signals/16 intersections - \$444,000 STP
- Jackson County – Hwy 609/Old Fort Bayou Rd - \$1,493,640 STP
- D'Iberville – Big Ridge Rd & D'Iberville Blvd/1-10, Dewey Lawrence, South - \$2,938,778 STP
- Jackson County – Lemoyne Blvd/Brittany Ave - \$308,000 STP
- Gulfport – Courthouse Rd/Pass Rd to US 90 - \$2,683,532 STP
- Bay St. Louis – Old Spanish Trail Lighting/Main St to City Limits - \$640,640 STP

Increase Funding (amendment)

- Biloxi - Popps Ferry /Cedar Lake to D'Iberville Blvd - Add \$5,000,000 STP for a total of \$7,204,800 STP
- Pascagoula – Hospital Rd/Old Mobile Hwy to US 90 – Add \$1,798,817 STP for a total of \$2,293,217 STP
- Gautier – Martin Bluff Rd/Gautier-Vancleave Rd to Frontage Rd – Add \$2,392,005 STP for a total of \$3,328,005 STP

Remove Project (amendment)

- Pascagoula – Ingalls Ave/Chicot Rd. & Martin St. \$396,000 STP
- Harrison County – Hwy 605 Frontage Rd./Lorraine Rd to 2000' North - \$726,800 STP
- D'Iberville – Automall Pkwy & Rodriguez St./D'Iberville Blvd to I-110 - \$200,000 STP
- Gulfport – Seaway Rd Pedestrian Path/Three Rivers Rd to Lorraine Rd - \$788,304 STP

Modifications

- Biloxi - Popps Ferry Rd/Cedar Lake Rd to D'Iberville Blvd – Move from FY 2013 to FY 2015
- Gulfport – 28th St/34th Ave to 23rd Ave – Move from FY 2012 to FY 2014
- Jackson County – Old Fort Bayou Rd/Yellow Jacket Rd - Move from FY 2014 to FY 2015
- Biloxi – Popps Ferry Road Extension/Pass Road to US 90 – Move from FY 2012 to FY 2018
- Gulfport – Seaway Rd/Three Rivers Rd to 1 mile east – Move from FY 2013 to FY 2014
- Pascagoula – Hospital Rd/Old Mobile Hwy to US 90 – Move from FY 2015 to FY 2016
- Bay St Louis – Old Spanish Trl/City Limits to Main St – Move from FY 2013 to FY 2014
- Gautier – Martin Bluff Rd/Gautier-Vancleave Rd to Frontage Rd - Move from FY 2013 to FY 2016
- Gulfport - Deadeaux Rd/ Three Rivers rd to Hwy 605 – Move from FY 2013 to FY 2015
- Gulfport – Ship Island Terminal Project/ Bert Jones Yacht Basin – Move from FY 2013 to FY 2015
- Bay St. Louis – US 90 Pedestrian Path/BSL Bridge to Main St - Move from FY 2013 to FY 2015
- Ocean Springs – Government St/Hanley Rd to Hanshaw Rd - Move from FY 2013 to FY 2014
- D'Iberville – D'Iberville Blvd/Central Ave to Automall Pkwy - Move from FY 2013 to FY 2015
- Pass Christian – Cedar Ave/RR to US 90 - Move from FY 2015 to FY 2018
- Biloxi – Reynoir St and Jackson St/Downtown Biloxi – Move from FY 2014 to FY 2015
- Harrison County – Biloxi River Bridge/Lorraine Rd – Move from FY 2013 to FY 2014
- Gautier – Hwy 57/Brown Rd - Move from FY 2013 to FY 2015
- Moss Point – Main St/South to Jefferson - Move from FY 2013 to FY 2015
- Moss Point – Second St/East Moss Point - Move from FY 2014 to FY 2015

March 2014 Amendments/Modifications:
· Ocean Springs – Porter Ave/Martin Avenue to Howard Ave – Move from FY 2013 to FY 2018
· Gulfport – Deadeaux Road/Three Rivers Rd to Hwy 605 – Move from FY 2015 to FY 2016
· Bay St. Louis – US 90 Pedestrian Path/BSL Bridge to Main St – Move from FY 2015 to FY 2016
· D'Iberville – D'Iberville Blvd/Central Ave to Automall Pkwy - Move from FY 2015 to FY 2016
· Harrison County – Biloxi River Bridge/Lorraine Rd – Change from FY 2014 to FY 2015
· Gautier – Hwy 57/Brown Road - Change from FY 2015 to FY 2016
· Gulfport – Pass Road Signal System/16 intersections - Change from FY 2014 to FY 2015
· Gulfport – Courthouse Rd/Pass Rd to US 90 – Change from FY 2018 to FY 2017
· D'Iberville – D'Iberville Blvd and Big Ridge Rd/ I-10 ramps – Change from FY 2015 to FY 2016
· Bay St Louis – Old Spanish Trl/Main St to Waveland Limits - Change from FY 2015 to FY 2016
June 2014 Amendments/Modifications:
Amendments
· Ocean Springs – Porter Avenue/Martin Avenue to Howard Avenue. Remove Project.
· Jackson County – Hwy 57/Old Spanish Trl to US 90. Remove Project.
· CTA – Purchase replacement mobile surveillance equipment. \$128,000 (FTA) \$32,000 (CTA) Add Project.
· CTA – Expansion of the Gulfport Transit Center Intermodal Hub. \$6,560,000 (FTA) \$1,640,000 (CTA) Add Project.
October 2014 Amendments/Modifications:
Modifications
· Advance construction strategy was implemented
March 2015 Amendments/Modifications:
Modifications
· Added \$1,550,000 in TE funds under the TAP group in 2015
June 2015 Amendments/Modifications:
Modifications
· Harrison Co.–Biloxi River Bridge. Move \$3,000,000 STP into FY14 from FY15. Leave balance of \$1,211,197 STP in FY16.
· Gautier - Martin Bluff Rd. Add ROW Phase. \$3,199,682 Fed. Earmark
· CTA – Change funding fiscal year. Expansion of Gulfport Transit Center Intermodal Hub. Move and split \$6,560,000 in FY 2015 to FY 2016 (\$3,280,000) and FY 2017(\$3,280,000).
Group Project Adjustments
· D'Iberville – Add project to Safety Group. D'Iberville Blvd and Boney Ave. Traffic signal. \$125,000 STP at 100%.
· D'Iberville – Remove project from Bike/Ped/Transit Group. D'Iberville Blvd/Central Ave to Automall Pkwy. \$97,002 STP
· GRPC – Adjust funding for safety projects to reflect each county's MOU.
· Long Beach – Added study. Pineville Rd. \$60,000
· Diamondhead – Added study. Circulation. \$60,000
Amendments
Remove from TIP
· Gulfport – Ship Island Terminal Project. \$560,301 STP
· Pass Christian – Cedar Ave/ Railroad to US 90. \$163,570 STP
Add to TIP

· Waveland - Waveland Avenue Sidewalk Project: \$1,264,000 STP
· Gulfport - Landon Road Widening Project PH I: \$1,000,000 STP
· Gulfport - Airport Road Improvements: \$550,000 STP
· Pass Christian - North Street Sidewalks: \$452,800 STP
October 2015 Amendments/Modifications:
<u>Amendment: Added to TIP</u>
· Biloxi - Popp's Ferry Road. Submarine Cable. \$749,000 STP (Request made by MDOT)
November 2015 Amendments/Modifications:
· Move Moss Point Main Street sidewalks project from FY17 to FY18
· Move Jackson County Hwy 609 @ Old Fort Bayou from FY18 to FY19
· Move Pascagoula Hospital Road from FY17 & 18 to FY16 & 17
· Move Biloxi Popp's Ferry Extension from FY19 to FY18
· Adjust D'Iberville Big Ridge Road project AC funding split
· Move Gulfport Courthouse Road project from FY17&18 to FY16&17
· Move Gautier Martin Bluff Road project from FY16 & 17 to FY17 & 18
· Adjust Biloxi River Bridge AC funding split
· Move Jackson County Lemoyne Blvd @ Brittany Ave from FY16 to FY17
June 2016 Amendments and Modifications
· Add MDOT project: Bridge Group #107213-10100 (FY2016) I-10 Widening from Hwy 57 to the Alabama State Line. (Funding for preliminary engineering phase – total \$750,000 (\$600,000 Federal, \$150,000 State/Local))
· Increase Funds \$259,260 for Gulfport's Dedeaux Road project
· Increase Funds \$676,270 for Gulfport's Courthouse Road project
· Increase Funds \$1,208,133 for Gulfport's Landon Road project
· Remove Gautier Hwy 57 & Brown Road Signal Project at LPA request
· Remove D'Iberville Big Ridge and D'Iberville Blvd Project at LPA request
· Add Waveland, Nicholson Ave overlay and widening, \$800,000 STP
· Add Diamondhead, Golf Club Drive Roundabout, \$200,00 STP
· Add Diamondhead, I-10 interchange lighting, \$400,00 STP
· Add Long Beach, Pineville Road sidewalks, \$1,000,000 STP
· Add D'Iberville Popp's Ferry Realignment, \$2,938,779 STP
· Add Jackson Co. Signal at Lemoyne and McCann, \$360,000 STP
· Add Jackson Co. Yellow Jacket Street sidewalks, \$160,000 TAP
· Add Gulfport Seaway Road Multiuse Pathway, \$788,304 TAP
· Add Bay-Waveland School District Pine street sidewalks, \$244,000 TAP
<u>Coast Transit Authority (CTA) Amendment(s):</u>
· Sec 5307 Preventive Maintenance Increase to total \$1,663,000 (federal \$1,330,400, local \$332,600)
· Sec 5307 JARC Purchased Transportation Increase to total \$380,000 (federal \$380,000, local \$0)
· Sec 5310 New Freedom Services Increase to total \$840,000 (federal \$672,000, local \$168,000)
· Sec 5307 Mobility Manager Increase to total \$75,000 (federal \$60,000, local \$15,000)
· Sec 5307 Gulfport Intermodal Hub Increase to total \$8,345,000 (federal \$6,676,000, local \$1,669,000)
· Add New Project: Sec 5339 Gulfport Hwy 90 Tram Bridge Project Total \$9,856,000 (federal \$7,884,800, local \$1,971,200)
September 2016 Amendments/Modifications:

· Lemoyne and Brittany (Jackson Co.) received additional funds and was moved to 2016
· Courthouse Road (Gulfport) received additional funds and was moved to 2016
· Dedeaux Road (Gulfport) received additional funds and was moved to 2016
· Main Street (Moss Point) sidewalks were moved into 2016
· Hospital Road (Pascagoula) was divided into two projects (Phase 1 in FY16, Phase 2 in FY17)
Febraury 2017 Amendments and Modifications
Amendments:
· Remove Bay St Louis, Old Spanish Trail lighting (\$640,640 STP)
· Remove Bay St Louis, Hwy 90 multiuse pathway (\$164,800 STP)
· Add Diamondhead, Aloha Dr widened shoulder (\$136,400 TAP)
· Add Diamondhead, Noma Dr multiuse pathway (\$430,400 TAP)
· Add Diamondhead, Golf Club Dr sidewalk extension (\$400,000 STP)
· Add Ocean Springs, Porter Ave bike/ped improvements (\$930,000 STP)
· Add Gulfport, Ship Island Ferry program upgrades (\$1,156,913 Earmark)
· Add Gulfport, Hwy 90 and 20 th Ave Improvements (\$507,169 STP)
· Funding Increase, Gulfport, Dedeaux Rd by \$1,573,635 STP in FY17
· Funding Increase, Gulfport, Courthouse Rd by \$623,598 STP in FY17
Coast Transit Authority (CTA) Amendment(s):
· CTA Funding Increase: Computer Equipment, Sec 5307 increase from \$16,000 to \$24,000
· CTA Additional Funds: Expand Gulfport Multimodal Hub, Sec 5307 \$8,878,408 FY18
· CTA Additional Funds: Gulfport/Hwy 90 Bike/Ped/Tram Bridge, Sec 5339 \$8,925,500 FY18
Modifications:
· Bay-Waveland School District, Pine Street moved FY17 to FY18
· Gulfport, Seaway Road moved from FY17 to FY18
· Gulfport, Airport Road moved FY17 to FY19
· Jackson Co, Lemoyne/McCann moved from FY17 to FY18
· Jackson Co, Hwy 609 & Old Fort Bayou moved from FY19 to FY20
· Jackson Co, St. Martin N Elementary moved from FY20 to FY18
· D'Iberville Boney/D'Iberville Blvd moved from FY17 to FY18
· D'Iberville Popps Ferry Realignment advance construction over FY18 and FY19
· Biloxi Popps Ferry Extension advance construction over FY18 and FY19
· Diamondhead, Golf Club Drive Roundabout moved from FY18 to FY17
· Waveland, Waveland Ave moved from FY19 to FY18
· Long Beach, Pineville Road moved from FY20 to FY17
May 2017 Amendments & Modifications
Amendments:
· Long Beach, Changed Pineville Road project termini from Alexander Road to Harper-McCann School
· Waveland, Changed Waveland Ave project termini from Dubuc Lane to the city park south of CSX RR tracks <i>City elected not to</i>
· Gulfport, Add Ship Island Ferry Terminal Improvement Project, Earmark Funds \$1,156,913
Modifications:
· Pascagoula, Decrease Hospital Road Phase 2 FY17 STP/Non-urban funds by \$142,274, total is \$1,250,943
· Pascagoula, Increase Hospital Road Phase 1 FY16 STP/Non-urban funds by \$356,766, total is \$1,256,766
· Biloxi, move Popps Ferry Extension from FY18/19 to FY19/20
· Gulfport, Add \$383,000 STP to Courthouse Road in FY17
· Hancock Co, Change Beach Access Study termini from Buccaneer State Park to Lakeshore Drive

· GRPC, Add STP group funds to Get To B safety projects, phase 2 development \$150,000
· GRPC, Add STP group funds to Get To B professional development safety series \$12,000
· Jackson Co, Add STP group funds to the Countywide Bike Plan Study, increase from \$80,000 to \$91,463
August 2017 Amendments & Modifications
Amendments:
· Removal of 3 Diamondhead projects from the TIP: Golf Cart Drive Sidewalks, Golf Cart Drive Roundabout & Noma Drive Mult
· Removal of Biloxi Sidewalk project on Reynoir and Jackson Streets
Modifications:
· Waveland, increase funds for FY17 Waveland Sidewalk Study from \$80,000 to \$82,641
· Biloxi, add the Biloxi Rail Corridor Study for \$150,000 FY18 STP-Study Group
· Pascagoula, Move Hospital Road Ph. 2 from FY17 to FY18
· Bay St Louis, Move Carrol Ave SRTS project from FY17 to FY18
· Diamondhead, Move I-10 lighting project to FY18 to align with MDOT reconstruction project
· Gautier, Remove Advance Construction for Martin Bluff Road, project in FY19
· D'Iberville, Remove Advance Construction for Popps Ferry Realignment, project in FY20
· Long Beach, Termini Correction on Pineville Rd sidewalks from Royal Dr to Willow Creek Dr
· Biloxi, include TIP Page for Popps Ferry Bridge replacement earmark funds (not programmed at this time)
December 2017 Amendments & Modifications
Amendments:
· Pascagoula, Increase Hospital Road Phase 1 funds by \$55,706, new total is \$1,312,472
· Pascagoula, Increase Hospital Road Phase 2 funds by \$293,852 and \$170,140 for RR costs, new total is \$1,714,935
Modifications:
· D'Iberville, Increase Boney Ave Signal STP allocation by \$73,500, new total is \$198,950
· Diamondhead, increase STP allocation for I-10 lighting project by \$48,485, new totla is \$448,485
January 2018 Amendments & Modifications
Amendments:
· None
Modifications:
· Gautier, Split project between FY19 & 20, adjustNon-Urban funds allocation to reflect available balances and shift remaining funding to STP-TMA as the funding source. All totals remain the same.
· GRPC Traffic Signal Prioritization Project funding increase from \$40,000 to \$50,000 in FY2018
· Jackson County, Shift the McCann Road Overpass Study from FY17 to FY18 to reflect actual obligation year
· Biloxi, Adjust ROW phase for Popps Ferry Road Extension. Shift from FY17 to FY18 and update earmark funds with available federal balances. ROW costs exceeded available federal funds, city is covering balance so match will exceed the original 20% match requirement
March 2018 Amendments & Modifications
Amendments:
· Biloxi, Increase funds for Popps Ferry Submarine Cable by \$429,000. Increase from \$749,000 to \$1,178,000
Modifications:
· Diamondhead, Include a technical study on E. Aloha drive from Veterans to Kalani Drive in the FY18 study/projects group
· Pass Christian, include replacement of the Clark Ave. Bridge in the FY18 study/projects group

NOTE: at March1 MPO-TPC meeting new TIP handbook policies were adopted which included a funding increase cap of 20%. This applies to project toals currently on the 2017-2020 TIP and original award totals of projects added to the TIP after March