



FY 2019-2022
Mississippi Gulf Coast
Metropolitan Planning Organization
Transportation Improvement Program





Non-Discrimination Notification:

GRPC prohibits discrimination in all of its programs, services and activities. Public participation is solicited without regard to race, color, national origin, age, sex, religion, disability, or other protected status. Persons who require assistance under the Americans with Disabilities Act should contact the MPO at least five (5) business days prior to the any scheduled meeting, event or the end of a public review and comment period. Contact Stephanie Plancich at 228-864-1167 or by email to contactus@grpc.com with any requests, questions or comments.

Notation of Financial Assistance:

This document was prepared and published by Gulf Regional Planning Commission, the Mississippi Gulf Coast Metropolitan Planning Organization (MPO), in cooperation with or with financial assistance from the United States Department of Transportation (USDOT), the Federal Transit Administration (FTA), the Federal Highway Administration (FHWA) and the Mississippi Department of Transportation (MDOT). Assistance notwithstanding, the contents of this document do not necessarily reflect the official view or policies of the funding agencies.

Notice of Public review:

In compliance with federal regulation 23 CFR 450 and the FTA public participation requirements of the Section 5307 POP notice, the Mississippi Gulf Coast Metropolitan Planning Organization (MPO) sought public input from 7/1/18 through 8/15/2018 prior to the TPC reviewing the FY19-22 Transportation Improvement Program (TIP) for adoption on August 23, 2018. The public participation summary is included in the Appendix of this document.



Mississippi Gulf Coast Metropolitan Planning Organization

FY2019-2022 Transportation Improvement Program (TIP)

The Gulf Coast MPO

The Metropolitan Planning Organization (MPO) is a federally mandated planning body responsible for transportation planning in US Census designated urbanized areas. Gulf Regional Planning Commission (GRPC) serves as the MPO for the Mississippi Gulf Coast, coordinating transportation programs for all jurisdictions within the urbanized areas of Hancock, Harrison, and Jackson Counties. It is the lead agency responsible for developing and administering plans and programs to maintain eligibility and receive federal funds for the transportation systems in the Mississippi Gulf Coast area. The primary mission of the MPO is to develop and maintain a transportation planning process that is compliant with federal and state requirements and supports the development and enhancement of sustainable multimodal facilities, programs and systems in the region. The Transportation Improvement Program (TIP) is one of the most critical products of the MPO's planning process.

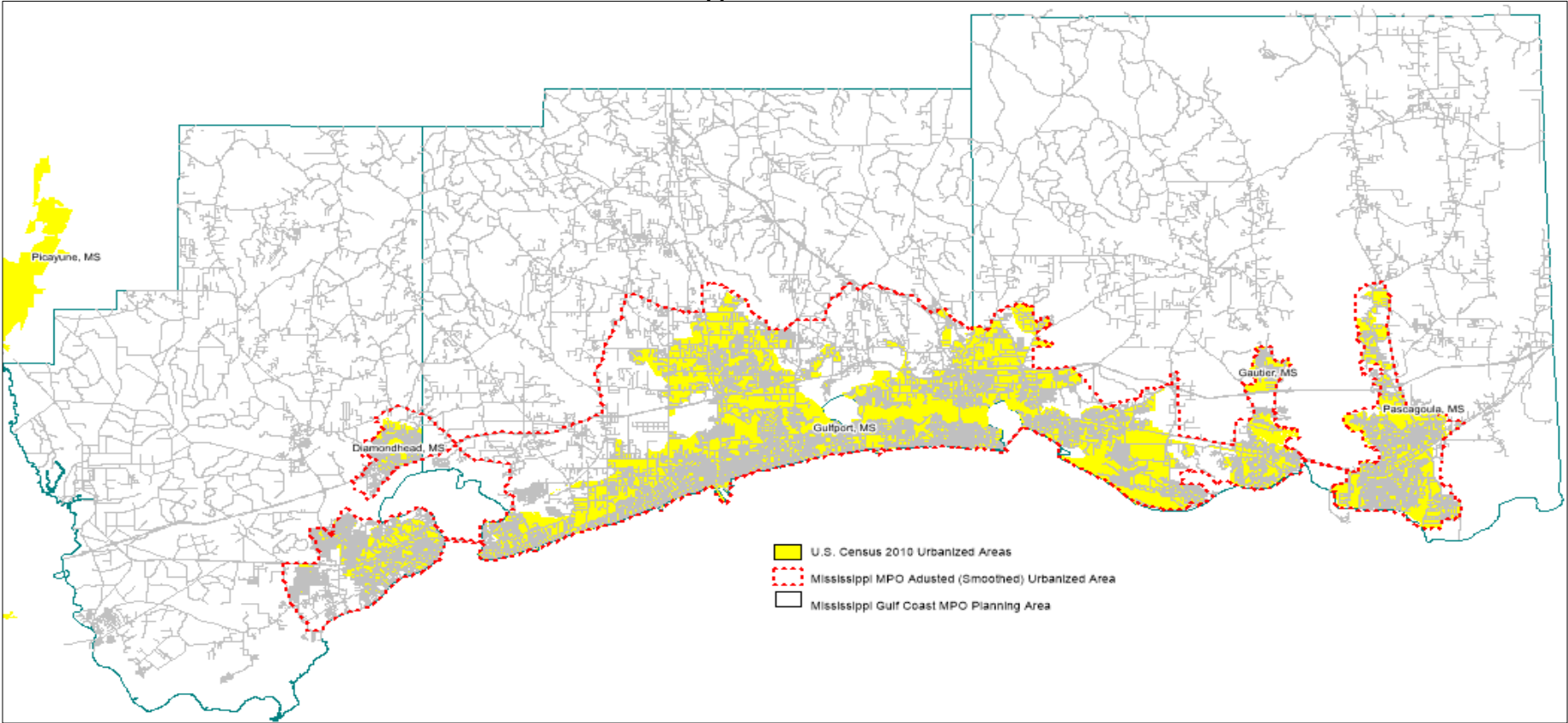
The Transportation Improvement Program (TIP)

The TIP is a financially constrained program developed through an on-going planning process for addressing short-term transportation priorities. All projects in the TIP must be consistent with goals and projects identified in the region's long-range Metropolitan Transportation Plan (MTP). The TIP is developed and approved by the MPO and is included, without modification, in the Statewide Transportation Improvement Program (STIP) following approval by the Governor. The Mississippi Gulf Coast MPO allocates Surface Transportation Block Grant (STBG) and Transportation Alternative Program (TAP) funds through TIP policies and processes described in the MPO's *TIP Handbook* and *Public Participation Plan*.

The MS Gulf Coast TIP identifies the timing and funding of all federally funded transportation projects scheduled for implementation in the three coastal counties over a four-year period. The TIP identifies funding amounts and source, identifies the project sponsor, lists the type of project and the anticipated year of funding obligation. The TIP development process allows for public involvement at various points, including public meetings where proposed projects are presented and discussed. Specific policies for public review are included in the MPO's *Public Participation Plan*.

The TIP development process occurs every two years, however the MPO provides regular opportunity for project holders to update and request revision of their TIP projects. There are two categories of changes made to the TIP. An *amendment* is a revision being made to the scope or termini of a project including the removal or addition of a project. A *modification* is considered a minor revision including shifts in funding years, adding projects within MPO groups and implementing the MS Gulf Coast MPO's 20% maximum cost increase to a project. Specific policies for TIP changes are included in the MPO's *TIP Handbook*.

Mississippi Gulf Coast Service Area



National Goal and Emphasis areas

The TIP development process is guided by MPO Planning Factors which reflect the priorities and direction of the region. TIP project applications that address the planning factors presented in Table 1 below receive prioritization points in the application ranking process.

Planning Factors

- Economic Vitality - Support the economic vitality of the metropolitan area, especially by enabling global competitiveness, productivity, and efficiency
- Safety - Increase the safety of the transportation system for motorized and non-motorized users
- Security - Increase the security of the transportation system for motorized and non-motorized users
- Mobility & Accessibility - Increase the accessibility and mobility of people and for freight
- Environment - Protect and enhance the environment, promote energy conservation, improve the quality of life, and promote consistency between transportation improvements and State and local planned growth and economic development patterns
- Multimodal Connectivity - Enhance the integration and connectivity of the transportation system, across and between modes, for people and freight
- Operations - Promote efficient system management and operation
- Preservation - Emphasize the preservation of the existing transportation system
- Reliability & Resiliency - Improving transportation system resiliency and reliability
- Storm water - Reducing (or mitigating) the stormwater impacts of surface transportation
- Tourism - Enhancing travel and tourism

TIP Investment Strategy

The MPO uses “Groups” to ensure progress is made toward reaching regional goals. By earmarking a portion of the federal funds allocated to the region into specific group, the MPO ensures support for specific regional priorities, national goals and meeting performance targets. This strategy enables the MPO to encourage the use of STP funds for smaller, targeted and quickly implemented projects. While encouraging investment in priority focus areas, the group strategy also controls the amount of funding used on any specific project type. The Groups enable the MPO to expedite project delivery and to be more responsive to emerging transportation needs by not requiring a TIP amendment to add new group projects. The MS Gulf Coast MPO groups include the Get To B Safety Group (G2B), Bicycle/Pedestrian/Transit Group (BPT), Studies & Projects Group (S&P) and a Bridge Projects Group.

TIP Project Evaluation and Prioritization

Given today's fiscal realities and demands for budget reductions at all levels of national, state, and local government, decisions on where and how to spend the Mississippi Gulf Coast MPO's allocation of STBG, TAP and other federal transportation funds is taken lightly. To ensure that the most beneficial projects are implemented, a project prioritization process is used. The criteria used are based on federal goals, emphasis areas and performance measures for the MPO. Projects are evaluated by MPO staff and prioritized to achieve performance targets that link investment decisions to the region's goals.

Transportation Funding Bill

Congress passes a new Transportation Bill approximately every four to six years, the latest of which is entitled the Fixing America's Surface Transportation Act (FAST Act). The Transportation Bill authorizes to each state a certain amount for each funding category (STBG, TAP, etc.) for the federal fiscal years it covers. These authorizations are based on the funds expected to be available in the Highway Trust Fund.

Congress then passes an Appropriations Bill near the beginning of each year that establishes the exact amounts that the states can spend in their highway programs. The Appropriation Bill establishes a certain percentage of the total authorization for the states, which is referred to as an Obligation Limitation. MDOT suballocates STBG funds to its urbanized areas with over 200,000 in population (Gulfport, UZA) and must make obligation limitation available based on the criteria set forth in 23 U.S.C. 133(e). MDOT makes available 100% of the Gulfport UZA suballocation obligation limitation for each fiscal year to actually spend.

The FAST Act made few adjustments to the annual allocation nor the performance management provisions established by MAP-21, the previous transportation funding bill.

Performance Management

MAP-21 was developed with the intent of creating a streamlined, performance-based, multimodal program. MAP-21 increased the accountability and transparency of federal highway programs by improving transportation investment decision-making through performance-based planning and programming. Performance measurement provides the MPO with a better ability to identify and mitigate issues within their respective transportation networks. The FAST Act continues MAP-21's overall performance approach and ensures that State DOT's and MPO's invest in projects that collectively make progress toward the National Goals established by Congress.

Performance Goals

- **Safety** - To achieve a significant reduction in traffic fatalities and serious injuries on all public roads
- **Infrastructure condition** - To maintain the highway infrastructure asset system in a state of good repair
- **Congestion reduction** - To achieve a significant reduction in congestion on the National Highway System
- **System reliability** - To improve the efficiency of the surface transportation system
- **Freight movement and economic vitality** - To improve the national freight network, strengthen the ability of rural communities to access national and international trade markets, and support regional economic development
- **Environmental sustainability** - To enhance the performance of the transportation system while protecting and enhancing the natural environment
- **Reduced project delivery delays** - To reduce project costs, promote jobs and the economy, and expedite the movement of people and goods by accelerating project completion through eliminating delays in the project development and delivery process, including reducing regulatory burdens and improving agencies' work practices

Performance Measures

Safety

- Total number of traffic related fatalities on all public roads.
- Rate of traffic related fatalities on all public roads per 100 million VMT.
- Total number of traffic related serious injuries on all public roads.
- Rate of traffic related serious injuries on all public roads per 100 million VMT.
- Total number of non-motorized fatalities and serious injuries on all public roads.

Pavement Condition

- Percentage of pavements on the Interstate System in Good condition.
- Percentage of pavements on the Interstate System in Poor condition.
- Percentage of the non-interstate National Highway System in Good condition.
- Percentage of the non-interstate National Highway System in Poor condition.

Bridge Condition

- Percentage of National Highway System bridges classified as in Good condition.
- Percentage of National Highway System bridges classified as in Poor condition.

NHS Travel Time Reliability

- Percent of the Person-Miles Traveled on the Interstate that are reliable.
- Percent of the Person Miles Traveled on the Non-Interstate National Highway System that are reliable.

Freight Reliability

- Percentage of Interstate System mileage providing reliable truck travel time.

Traffic Congestion

- Annual hours of peak hour excessive delay per capita. *
- Percentage of Non-Single Occupancy Vehicle Travel. *

Total Emissions Reduction

- Total emissions reductions by applicable pollutants under the CMAQ program. *

Transit State of Good Repair

**Not required for Gulf Coast MPO*

Linking the TIP

The MPO coordinates closely with MDOT and other stakeholders throughout the TIP development process ensuring compliance with regional goals, objectives, and targets to the maximum extent practicable. The Gulf Coast MPO recognizes the importance of linking its investment priorities with national goals. The Gulf Coast TIP investment strategy is supported by the project evaluation and prioritization processes and is designed to help achieve performance targets for each performance goal. The table below shows how the MPO uses the TIP to advance national goals, planning emphasis areas and performance measures set by the Federal Highway Administration (FHWA):

MAP-21 National Goal	FAST Act National Planning Emphasis Area	TIP Investment Strategy	TIP Project Evaluation Criteria	Performance Measures
Infrastructure Condition	Emphasize the preservation of the existing transportation system	Multimodal Program Bridge Group	Traffic operations improvement projects	Pavement Condition. Percentage (%) of pavements of the Interstate System in Good Condition
				Pavement Condition. Percentage (%) of pavements of the Interstate System in Poor Condition
				Pavement Condition. Percentage (%) of pavements of the Non-Interstate NHS in Good Condition
				Pavement Condition. Percentage (%) of pavements of the Non-Interstate NHS in Poor Condition
				Bridge Condition. Percentage (%) of NHS bridges classified as in Good Condition
				Bridge Condition. Percentage (%) of NHS bridges classified as in Poor Condition
Safety	Increase the safety of the transportation system for motorized and non-motorized users	Multimodal Program	Project crash rate	Safety. Number of Fatalities on all public roads
	Increase the security of the transportation system for motorized and non-motorized users	Safety Group Bike-Ped-Transit Group	Project slows traffic on roads with excessive speeds Project's use of bicycle and pedestrian measures	Safety. Rate of Fatalities per 100 Million Vehicle Miles Traveled
				Safety. Number of Serious Injuries on all public roads
				Safety. Rate of Serious Injuries per 100 Million VMT
				Safety. Number of Non-motorized Fatalities and Serious Injuries on all public roads
Environmental Sustainability	Improve resiliency and reliability of the transportation system and reduce or mitigate storm water impacts of surface transportation	Multimodal Program	Project mitigates reoccurring storm water issues Project negatively or positively impacts underserved communities Project serves an essential service	Total Emission Reductions*
	Protect and enhance the environment, promote energy, conservation, improve quality of life, and promote consistency between transportation improvements and State and local planned growth and economic development patterns		Project is a priority of the CAC	
	Increase the accessibility and mobility of people and for freight		Public review process provided significant comment	

Economic Vitality/Freight Movement	Support the economic vitality of the metropolitan area, especially by enabling global competitiveness, productivity, and efficiency	Multimodal Program	Project generates new economic development	Freight Reliability. Percentage of interstate system providing reliable truck travel time. Truck Travel Time Reliability Index (TTTR)
	Increase the accessibility and mobility of people and for freight		Project services a specific land use, local corridor or mobility corridor High truck traffic roadway Transit corridor Demand management project	
Congestion Reduction	Promote efficient system management and operation	Multimodal Program	Project addresses congestion identified in the CMP or MTP	Traffic Congestion. Annual Hours of Peak Hour Excessive Delay Per Capita*
System Reliability				Traffic Congestion. Percentage (%) of Non-Single Occupancy Vehicle Travel*
				Travel Time Reliability. Percent (%) of the Person-Miles Traveled on the Interstate that are reliable - Level of Travel Time Reliability (LOTTR)
Reduced Project Delivery Delays	Travel Time Reliability. Percent (%) of the Person Miles Traveled on the Non-Interstate NHS that are reliable - Level of Travel Time Reliability (LOTTR)			
			Amount of ROW Categorical Exclusion Preliminary engineering complete Technical study was done on the project	

Fiscal Constraint

Federal regulations require that financial constraint of the Transportation Improvement Program (TIP) be demonstrated and maintained in each program year and shall include sufficient financial information to determine which projects are to be implemented using current and/or reasonably available revenues. The MPO will use the figures below to develop their fiscal constraint for the STBG and TAP funds for the planning area.

	2019	2020	2021	2022
TMA STBG	\$5,153,522	\$5,256,593	\$5,361,725	\$5,468,959
Small Urban STBG	\$778,331	\$778,331	\$778,331	\$778,331
TAP	\$346,352	\$353,279	\$360,345	\$367,552

Mississippi Gulf Coast TIP: Estimated Funding for FY2019-2022

FY2019 Estimate	Funding Source	Carryover	Federal	Local	Total
	TMA	\$5,747,104	\$3,652,473	\$2,349,894	\$11,749,471
	Non Urban	\$357,745	\$778,331	\$284,019	\$1,420,095
	TAP Projects	\$683,169	\$346,352	\$257,380	\$1,286,901
	Get To B Safety Group	\$0	\$500,000	\$0	\$500,000
	Bicycle/ Pedestrian/Transit Group	\$500,000	\$500,000	\$250,000	\$1,250,000
	Studies/Projects Group	\$206,000	\$400,000	\$151,500	\$757,500
	Funding Source	Carryover	Federal	Local	Total
FY2020 Estimate	TMA		\$3,856,593	\$964,148	\$4,820,741
	Non Urban		\$778,331	\$194,583	\$972,914
	TAP Projects		\$353,279	\$88,320	\$441,599
	Get To B Safety Group		\$500,000	\$0	\$500,000
	Bicycle/ Pedestrian/Transit Group		\$500,000	\$125,000	\$625,000
	Studies/Projects Group		\$400,000	\$100,000	\$500,000
	Funding Source	Carryover	Federal	Local	Total
FY2021 Estimate	TMA		\$3,661,725	\$915,431	\$4,577,156
	Non Urban		\$778,331	\$194,583	\$972,914
	TAP Projects		\$360,345	\$90,086	\$450,431
	Get To B Safety Group		\$500,000	\$0	\$500,000
	Bicycle/ Pedestrian/Transit Group		\$500,000	\$125,000	\$625,000
	Studies/Projects Group		\$400,000	\$100,000	\$500,000
	Bridge Group		\$300,000	\$75,000	\$375,000
	Funding Source	Carryover	Federal	Local	Total
FY2021 Estimate	TMA		\$3,768,959	\$942,240	\$4,711,199
	Non Urban		\$778,331	\$194,583	\$972,914
	TAP Projects		\$367,552	\$91,888	\$459,440
	Get To B Safety Group		\$500,000	\$0	\$500,000
	Bicycle/ Pedestrian/Transit Group		\$500,000	\$125,000	\$625,000
	Studies/Projects Group		\$400,000	\$100,000	\$500,000
	Bridge Group		\$300,000	\$75,000	\$375,000

NOTE: Funding estimates are based on the reasonable expectation of continued funding for all federally supported programs.

Mississippi Gulf Coast FY19-22 Transportation Improvement Program (TIP) Summary

PROJECTS FOR FY 2019

Project #	Jurisdiction	Project	Termini	Scope of Work	Group/Source	Federal Share	TMA	Non-Urban	TAP	B/P/T	Safety	Bridge	Studies
107221(15/19)	*Gulfport	Landon Rd. Widening	US 49 to Coleman Rd.	Widen/Congest. Mgmt	TMA	\$1,751,867	\$1,751,867						
107516(17/19)	Waveland	Nicholson Ave. Pathway	Hwy 90 to Beach Blvd	Bicycle/Pedestrian	TMA	\$800,000	\$800,000						
107512(16/17)	Gulfport	Seaway Rd. Pathway	Three Rivers to Hwy 605	Bicycle/Pedestrian	TMA	\$945,964	\$945,964						
105069(4/12)	*Gautier	Martin Bluff Rd. Reconstruction	Gautier-Van. Rd. to Frontage Rd.	Reconstruction	N-U/TMA	\$1,664,002	\$527,926	\$1,136,076					
107584(17/18)	Diamondhead	E Aloha Dr. Pathway	Veterans Dr to the Medical Park	Bicycle/Pedestrian	TAP	\$136,400			\$136,400				
107508(16/18)	Jackson County	Yellow Jacket St. sidewalk	Lemoine Blvd to St Martin N Elementary	Bicycle/Pedestrian	TAP	\$160,000			\$160,000				
107556(17/18)	Gulfport	20th Ave. Sidewalks & ADA Access	Hwy 90 to 15th St	Transit/Pedestrian	TMA	\$507,169	\$507,169			\$507,169			
107343(15/19)	Pass Christian	North St. Sidewalks	Pass Christian HS to Pass Estates	Bicycle/Pedestrian	TMA	\$452,800	\$452,800			\$452,800			
107661(17/18)	GRPC	Traffic Signal Prioritization CON	Biloxi & Gulfport Signals	Safety - Transit	TMA	\$500,000	\$500,000				\$500,000		
(17/18)	Pass Christian	Clark Ave. Bridge Replacement	Bridge Replacement	Bridge Improvement	TMA	\$200,000	\$200,000						\$200,000
TOTALS						\$6,918,202	\$5,485,726	\$1,136,076	\$296,400	\$959,969	\$500,000	\$0	\$200,000

PROJECTS FOR FY 2020

Project #	Jurisdiction	Project	Termini	Scope of Work	Group/Source	Federal Share	TMA	Non-Urban	TAP	B/P/T	Safety	Bridge	Studies
107221(15/19)	*Gulfport	Landon Rd. Widening	US 49 to 34th Ave.	Widen/Pedestrian	TMA	\$1,208,133	\$1,208,133						
106888(13/17)	Jackson County	Hwy 609 Intersection	Old Fort Bayou Rd.	Intersection	TMA	\$1,493,640	\$1,493,640						
107696(17/18)	Biloxi	Main St Crossing	CSX Rail Crossing	Rail Safety	TMA	\$150,000	\$150,000						
(18/19)	Gulfport	School Zone Improvements	Citywide (14 schools)	School Safety	TMA	\$210,278	\$210,278						
105069(4/12)	*Gautier	Martin Bluff Rd. Reconstruction	Gautier-Van. Rd. to Frontage Rd.	Reconstruction	N-U/TMA	\$1,664,002	\$885,671	\$778,331					
(18/20)	USM - Gulf Park	Gulf Park Dr. Sidewalks	Bear Point Dr. to North of Hardy Hall	Bicycle/Pedestrian	TAP	\$231,400			\$231,400				
(18/20)	Diamondhead	Montjoy Crk. Nature Trail Pathway	Diamondhead Dr. to Rotten Bayou	Bicycle/Pedestrian	TAP	\$80,000			\$80,000				
(18/20)	Bay St Louis	Washington St. sidewalk	Old Spanish trail to Saint Francis St.	Bicycle/Pedestrian	TMA	\$120,000	\$120,000			\$120,000			
(18/20)	Ocean Springs	East Beach Dr. Pathway	Holcomb Blvd. to Halstead Rd.		TMA	\$384,000	\$384,000			\$384,000			
TOTALS						\$5,541,453	\$4,451,722	\$778,331	\$311,400	\$504,000	\$0	\$0	\$0

PROJECTS FOR FY 2021

Project #	Jurisdiction	Project	Termini	Scope of Work	Group/Source	Federal Share	TMA	Non-Urban	TAP	B/P/T	Safety	Bridge	Studies
(18/21)	Ocean Springs	Ocean Springs Rd. Reconstruction	US 90 to Culeoka Dr.	Reconstruction	TMA	\$2,258,400	\$2,258,400						
(18/21)	Harrison Co.	Landon Rd. Widening	Coleman Rd. to 34th St.	Widen/Pedestrian	TMA	\$1,360,000	\$1,360,000						
(18/21)	Moss Point	Jefferson St. Sidewalks	Main St to 2nd St. (Incl. %00' on Main)	Bicycle/Pedestrian	N-U	\$412,000		\$412,000					
(18/21)	Gulfport	Old Hwy 49 Sidewalk	Robinson Rd. to Oak Ln.	Bicycle/Pedestrian	TAP	\$160,000			\$160,000				
(18/21)	Hancock Co.	Washington St. ADA Beach Access	Around S. Beach Blvd Intersection	Bicycle/Pedestrian	TAP	\$240,000			\$240,000				
(18/21)	Long Beach	Pineville Rd. Sidewalks Ph. II	Harper McCaughan to Klondyke Rd.	Bicycle/Pedestrian	TMA	\$400,000	\$400,000			\$400,000			
(18/21)	*Biloxi	Cedar Lake Rd. Bridge	Tchouticabouffa River Bridge	Bridge Replacement	TMA	\$300,000	\$300,000					\$300,000	
TOTALS						\$5,130,400	\$4,318,400	\$412,000	\$400,000	\$400,000	\$0	\$300,000	\$0

PROJECTS FOR FY 2022

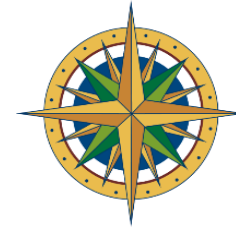
Project #	Jurisdiction	Project	Termini	Scope of Work	Group/Source	Federal Share	TMA	Non-Urban	TAP	B/P/T	Safety	Bridge	Studies
106253(7/12)	Biloxi	Popps Ferry Rd. Extension (Phase I)	Pass Rd. to Coliseum	New Roadway	TMA	\$2,163,200	\$2,163,200						
(18/22)	Long Beach	Klondyke Rd. Intersection	Commission Rd.	Intersection	TMA	\$760,000	\$760,000						
(18/21)	*Biloxi	Cedar Lake Rd. Bridge	Tchouticabouffa River Bridge	Bridge Replacement	TMA	\$260,000	\$260,000						
(18/22)	Moss Point	Macphelah Rd Intersection	Jefferson Ave.	Intersection	N-U	\$509,000		\$509,000					
(18/22)	Bay St Louis	Beyer Dr. Sidewalks	Carroll Ave. to Ranch St.	Bicycle/Pedestrian	TAP	\$280,000			\$280,000				
TOTALS						\$3,692,200	\$3,183,200	\$509,000	\$280,000	\$0	\$0	\$0	\$0

Illustrative Project List

Project #	Jurisdiction	Project	Termini	Scope of Work	Group/Source	Federal Request	TMA	Non-Urban	TAP	B/P/T	Safety	Bridge	Studies
107529(17/18)	D'Iberville	Popps Ferry Rd New Construction	Belle St. to Galleria Pkwy	New Roadway	TMA	\$2,938,780	\$2,938,780						
107222(15/17)	Gulfport	Airport Rd. Widening/Roundabout	East end of 4-lane to Washington Ave.	Widen/Roundabout	TMA	\$550,000	\$550,000						
	Gulfport	Dedaux Rd. Widening	Jessica Ln. to SR 605	Widen/Pedestrian	TMA	\$3,760,000	\$3,760,000						
	Biloxi	Woolmarket Rd. Sidewalk	Lorraine Rd. to Airport Rd.	Bicycle/Pedestrian	TAP	\$880,000			\$880,000				
TOTALS						\$8,128,780	\$7,248,780		\$880,000				

Mississippi Gulf Coast Metropolitan Planning Organization

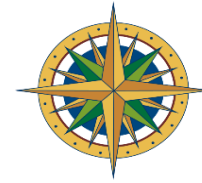
FY2019-2022 Transportation Improvement Program (TIP)



County	Harrison	Agency	Gulfport	MPO Cost	\$2,960,000	Total Cost	\$3,512,034	TIP Year	19/20	Project #	107221 (15/19)	
Improvement Type	Reconstruction					Route	Landon Rd.					
				Project Termini	Hwy 49 to Coleman Rd. (.25 mile)							
				Project Description	Widen Landon Road to reduce congestion and add bike/ped facilities							
Project Notes												
Action	Add to TIP	Date	6/25/2015	Type	Amend							
Remarks	\$1,000,000 STP											
Action	Add Funds	Date	8/25/2016	Type	Amend							
Remarks	Add \$1,208,133 STP											
Action	Change Year	Date	8/25/2016	Type	Mod							
Remarks	Advance Construction over FY19 & FY20											
Action	Add Funds	Date	8/23/2018	Type	Amend							
Remarks	\$751,867 STBG											
Action		Date		Type								
Remarks												
Action		Date		Type								
Remarks												
Action		Date		Type								
Remarks												
Action		Date		Type								
Remarks												
Funding Information												
Fiscal Yr	Source	Phase	Federal	Match	Total							
2019	STP-TMA	CON	\$1,751,867	\$250,000	\$2,001,867							
2020	STP-TMA	CON	\$1,208,133	\$302,034	\$1,510,167							
Project Totals			\$2,960,000	\$552,034	\$3,512,034							
Remarks												

Mississippi Gulf Coast Metropolitan Planning Organization

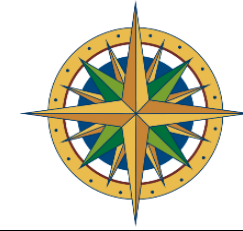
FY2019-2022 Transportation Improvement Program (TIP)



County	Hancock	Agency	Waveland	MPO Cost	\$800,000	Total Cost	\$1,000,000	TIP Year	19	Project #	107516 (16/19)
Improvement Type	Reconstruction					Route	Nicholson Ave.				
Project Termini						Hwy 90 to S. Beach Blvd. (1.5 miles)					
Project Description						Resurfacing and restriping roadway to include widened shoulders for bicycle and pedestrian access					
						Project Notes					
						Action	Add to TIP	Date	8/25/2016	Type	Amend
						Remarks	\$800,000 STP				
						Action	Change	Date	8/23/2018	Type	Amend
						Remarks	Change Termini to Jeff Davis Ave.				
						Action		Date		Type	
						Remarks					
						Action		Date		Type	
						Remarks					
						Action		Date		Type	
Remarks											
Funding Information						Action		Date		Type	
Fiscal Yr	Source	Phase	Federal	Match	Total	Remarks					
2019	TMA	CON	\$800,000	\$200,000	\$1,000,000						
Project Totals			\$800,000	\$200,000	\$1,000,000	Action		Date		Type	
						Remarks					

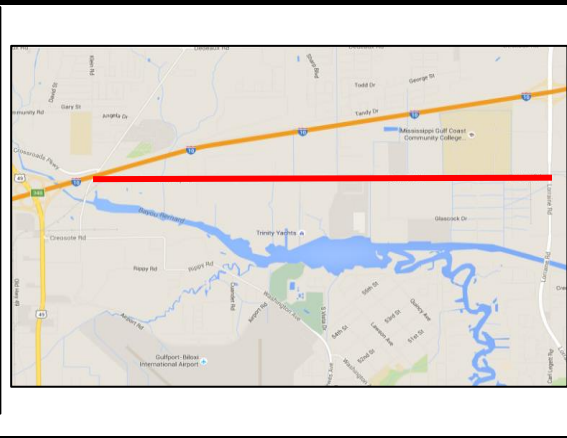
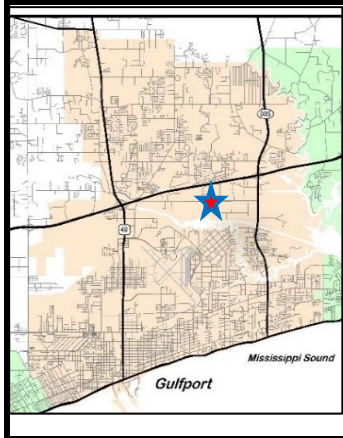
Mississippi Gulf Coast Metropolitan Planning Organization

FY2019-2022 Transportation Improvement Program (TIP)



County	Harrison	Agency	Gulfport	MPO Cost	\$945,964	Total Cost	\$1,182,455	TIP Year	19	Project #	107512 (16/17)
Improvement Type	Multiuse Pathway					Route	Seaway Rd.				

Project Termini	Three Rivers Rd. to Hwy 605 (3.2 miles)				
Project Description	Add a multiuse pathway on the southside, the length of Seaway Road				



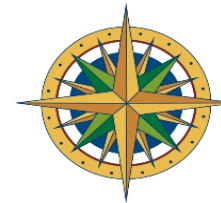
Project Notes

Action	Add to TIP	Date	8/25/2016	Type	Amend
Remarks	\$788,304 TAP				
Action	Change Year	Date	2/23/2017	Type	Mod
Remarks	Move from FY 17 to FY18				
Action	Add Funds	Date	8/23/2018	Type	Mod
Remarks	Add \$157,660 STBG				
Action	Change Year	Date	8/23/2018	Type	Mod
Remarks	Move from FY18 to FY19				
Action	Change Funds	Date	8/23/2018	Type	Mod
Remarks	Change Funding Source from TAP to STBG				
Action		Date		Type	
Remarks					
Action		Date		Type	
Remarks					
Action		Date		Type	
Remarks					
Action		Date		Type	
Remarks					

Funding Information					
Fiscal Yr	Source	Phase	Federal	Match	Total
19	TMA	CON	\$945,964	\$236,491	\$1,182,455
Project Totals			\$945,964	\$236,491	\$1,182,455

Mississippi Gulf Coast Metropolitan Planning Organization

FY2019-2022 Transportation Improvement Program (TIP)



County	Jackson	Agency	Gautier	MPO Cost	\$3,328,004	Total Cost	\$4,160,006	TIP Year	19/20	Project #	105069 (04/12)
Improvement Type	Reconstruction					Route	Martin Bluff Rd.				
				Project Termini	Gautier-Vancleave Rd. to Frontage Rd. (2.1 miles)						
				Project Description	Widening, add new Bike/Ped facilities and Intersection Improvements						
				Project Notes							
				Action	Add to TIP	Date	6/17/2004	Type	Amend		
				Remarks	\$900,000 STP						
				Action	Add Funds	Date	12/9/2010	Type	Amend		
				Remarks	\$936,000 STP & \$1,700,000 earmark						
				Action	Change Year	Date	2/10/2011	Type	Mod		
				Remarks	Change ROW Earmark from FY10 to FY11 & STP from FY11 to FY12						
				Action	Change Year	Date	10/1/2012	Type	Mod		
				Remarks	Move CON from FY12 to FY13						
				Action	Change Year	Date	9/13/2013	Type	Mod		
				Remarks	Move CON from FY13 to FY16						
				Action	Add funds	Date	10/24/2013	Type	Amend		
				Remarks	Add \$2,392,004 STP - Totaling \$3,328,004 STP						
				Action	Change Year	Date	10/1/2014	Type	Mod		
				Remarks	Advance Construction Split between FY16 & FY17						
				Action	Add ROW	Date	5/1/2015	Type	Mod		
				Remarks	Add ROW - \$3,199,682 Earmark						
				Action	Change Year	Date	8/25/2016	Type	Mod		
				Remarks	Move from FY 16/17 to FY 17/18						
				Action	Change Year	Date	8/31/2017	Type	Mod		
				Remarks	Move from FY 17/18 to FY 18/19						
				Project Totals	\$3,328,004	\$832,002	\$4,160,006				

Funding Information					
Fiscal Yr	Source	Phase	Federal	Match	Total
2019	Non-Urb	CON	\$1,136,076	\$416,001	\$4,160,006
2019	STP-TMA	CON	\$527,926		
2020	Non-Urb	CON	\$778,331	\$416,001	
2020	STP-TMA	CON	\$885,671		
Project Totals			\$3,328,004	\$832,002	\$4,160,006

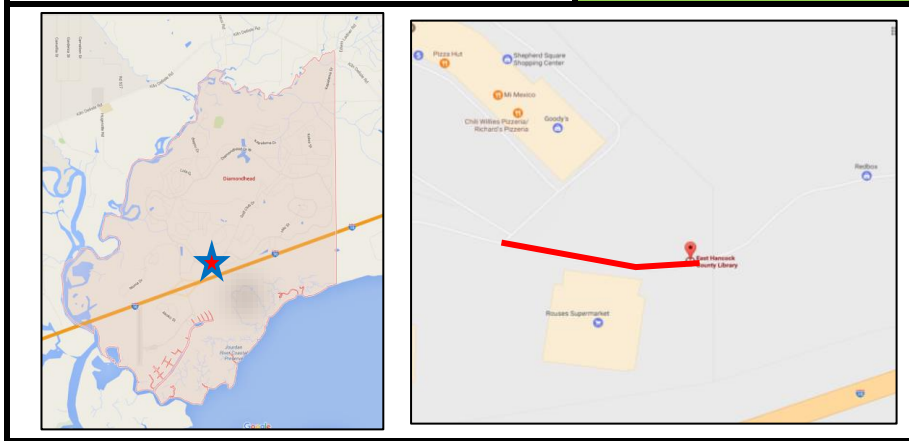
Mississippi Gulf Coast Metropolitan Planning Organization

FY2019-2022 Transportation Improvement Program (TIP)



County	Hancock	Agency	Diamondhead	MPO Cost	\$136,400	Total Cost	\$170,500	TIP Year	19	Project #	107584 (17/18)
Improvement Type	Multiuse Pathway					Route	E. Aloha Dr.				

Project Termini	Veterans Dr. to Medical Park (.21 mile)
Project Description	As part of the City's widening project, add a multiuse pathway on southside of roadway



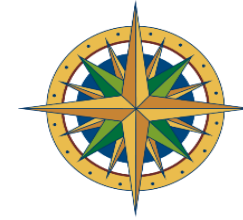
Project Notes

Action	Add to TIP	Date	2/23/2017	Type	Amend
Remarks	\$136,400 TAP				
Action	Change Year	Date	8/23/2018	Type	Mod
Remarks	Move from FY18 to FY19				
Action		Date		Type	
Remarks					
Action		Date		Type	
Remarks					
Action		Date		Type	
Remarks					
Action		Date		Type	
Remarks					
Action		Date		Type	
Remarks					
Action		Date		Type	
Remarks					

Funding Information					
Fiscal Yr	Source	Phase	Federal	Match	Total
2019	TAP	CON	\$136,400	\$34,100	\$170,500
Project Totals			\$136,400	\$34,100	\$170,500

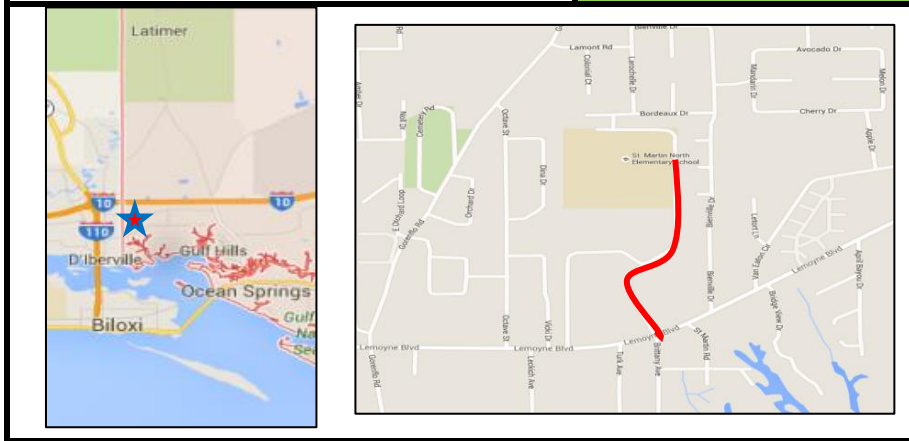
Mississippi Gulf Coast Metropolitan Planning Organization

FY2019-2022 Transportation Improvement Program (TIP)



County	Jackson	Agency	Jackson Co.	MPO Cost	\$160,000	Total Cost	\$200,000	TIP Year	19	Project #	107508(16/18)
Improvement Type	Sidewalk					Route	Yellow Jacket St.				

Project Termini	Lemoyne Blvd. to St Martin N Elementary School (.4 mile)
	Project Description
	Construct a new sidewalk from Lemoyne Blvd intersection and ballfields up to the elementary school



Project Notes					
Action	Add to TIP	Date	8/25/2016	Type	Amend
Remarks	\$160,000 TAP				
Action	Change Year	Date	2/23/2017	Type	Mod
Remarks	Move from FY20 to FY18				
Action	Change Year	Date	4/26/2018	Type	Mod
Remarks	Move from FY18 to FY19				
Action		Date		Type	
Remarks					
Action		Date		Type	
Remarks					
Action		Date		Type	
Remarks					

Funding Information					
Fiscal Yr	Source	Phase	Federal	Match	Total
2019	TAP	CON	\$160,000	\$40,000	\$200,000
Project Totals			\$160,000	\$40,000	\$200,000

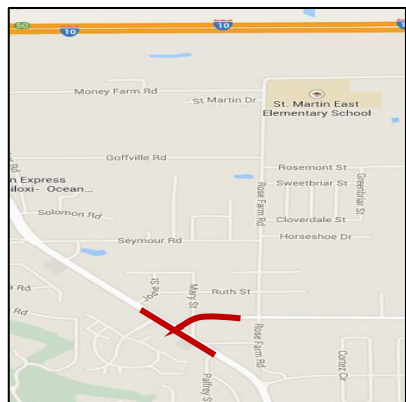
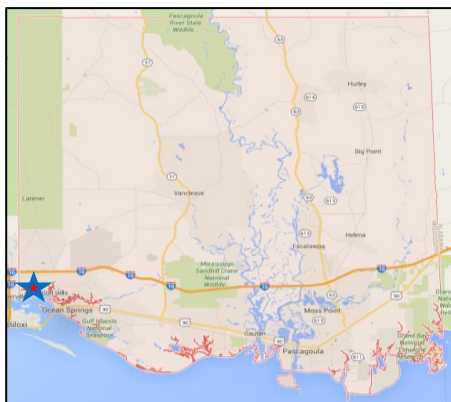
Action		Date		Type	
Remarks					
Action		Date		Type	
Remarks					
Action		Date		Type	
Remarks					
Action		Date		Type	
Remarks					

Mississippi Gulf Coast Metropolitan Planning Organization

FY2019-2022 Transportation Improvement Program (TIP)



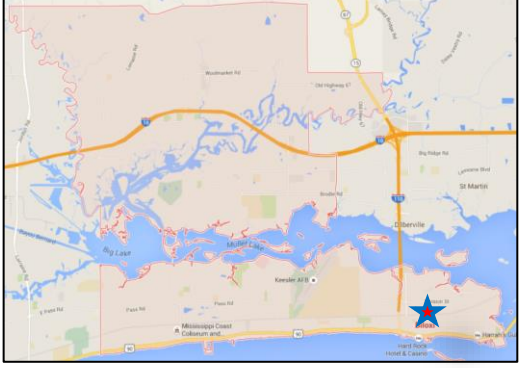
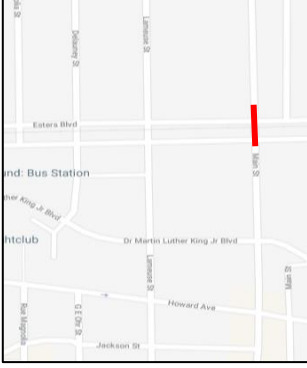
County	Jackson	Agency	Jackson Co	MPO Cost	\$1,493,640	Total Cost	\$1,867,050	TIP Year	20	Project #	107529 (16/17)
Improvement Type	Intersection					Route	Hwy 609				
Project Termini				Hwy 609 and Old Fort Bayou Rd.							
Project Description				Intersection realignment to alleviate congestion and improve safety. Project includes median, striping, turning lanes, pedestrian crossing and signalization.							
Funding Information		Project Notes									
Fiscal Yr	Source	Phase	Federal	Match	Total	Action	Add to TIP	Date	Type	Remarks	
2020	TMA	CON	\$1,493,640	\$373,410	\$1,867,050	Action	Add to TIP	8/25/2016	Amend	Remarks: \$1,493,640 STP	
						Action	Change Year	9/25/2014	Mod	Remarks: Move from FY17 to FY18	
						Action	Change Year	12/10/2015	Mod	Remarks: Move from FY18 to FY19	
						Action	Change Year	2/23/2017	Mod	Remarks: Move from FY19 to FY20	
						Action				Remarks:	
						Action				Remarks:	
						Action				Remarks:	
						Action				Remarks:	
						Action				Remarks:	
						Action				Remarks:	
						Action				Remarks:	
						Action				Remarks:	
						Action				Remarks:	
Project Totals			\$1,493,640	\$373,410	\$1,867,050						



Mississippi Gulf Coast Metropolitan Planning Organization

FY2019-2022 Transportation Improvement Program (TIP)



County	Harrison	Agency	Biloxi	MPO Cost	\$160,000	Total Cost	\$200,000	TIP Year	20	Project #	(18/20)
Improvement Type	Rail Crossing					Route	Main St.				
				Project Termini	CSX Crossing						
				Project Description	Asphalt work to reduce steepness of rail crossing						
 				Project Notes							
Action		Add to TIP	Date	8/23/2018	Type	Amend					
Remarks		\$160,000 STBG									
Action			Date		Type						
Remarks											
Action			Date		Type						
Remarks											
Action			Date		Type						
Remarks											
Action			Date		Type						
Remarks											
Action			Date		Type						
Remarks											
Action			Date		Type						
Remarks											
Action			Date		Type						
Remarks											
Funding Information											
Fiscal Yr	Source	Phase	Federal	Match	Total						
2020	TMA	CON	\$160,000	\$40,000	\$200,000						
Project Totals			\$160,000	\$40,000	\$200,000						

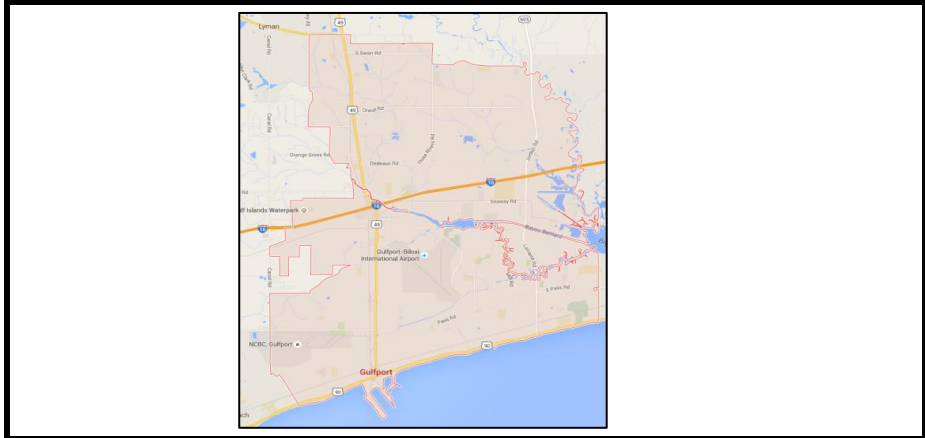
Mississippi Gulf Coast Metropolitan Planning Organization

FY2019-2022 Transportation Improvement Program (TIP)



County	Harrison	Agency	Gulfport	MPO Cost	\$210,278	Total Cost	\$262,848	TIP Year	20	Project #	(18/20)
Improvement Type	School Zone Improvements					Route	Various locations				

	Project Termini	14 Gulfport Schools
	Project Description	Update school zone signage, striping and other warning devices



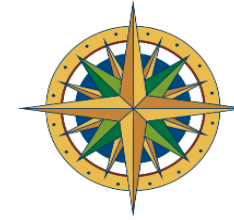
Project Notes					
Action	Add to TIP	Date	8/23/2018	Type	Amend
Remarks	\$210,278 STBG				
Action		Date		Type	
Remarks					
Action		Date		Type	
Remarks					
Action		Date		Type	
Remarks					
Action		Date		Type	
Remarks					

Funding Information					
Fiscal Yr	Source	Phase	Federal	Match	Total
2020	TMA	CON	\$210,278	\$52,570	\$262,848
Project Totals			\$210,278	\$52,570	\$262,848

Action		Date		Type	
Remarks					
Action		Date		Type	
Remarks					
Action		Date		Type	
Remarks					
Action		Date		Type	
Remarks					
Action		Date		Type	
Remarks					

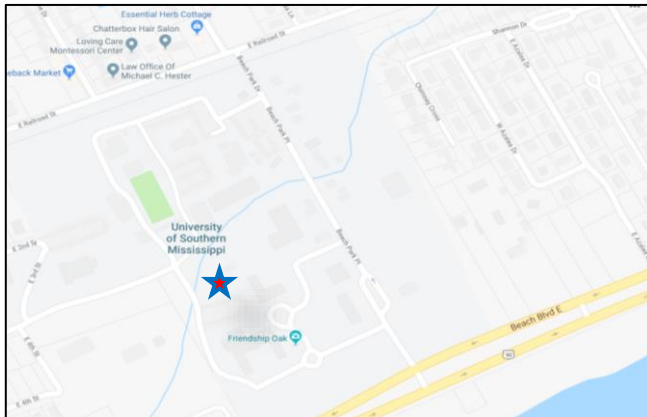
Mississippi Gulf Coast Metropolitan Planning Organization

FY2019-2022 Transportation Improvement Program (TIP)



County	Harrison	Agency	USM- Gulf Park	MPO Cost	\$231,400	Total Cost	\$289,250	TIP Year	20	Project #	(18/20)
Improvement Type	Sidewalk					Route	Gulf Park Dr.				

	Project Termini	Bear Point to north of Hardy Hall
	Project Description	Add a new 5' sidewalk



Project Notes

Action	Add to TIP	Date	8/23/2018	Type	Amend
Remarks	\$231,400 TAP				
Action		Date		Type	
Remarks					
Action		Date		Type	
Remarks					
Action		Date		Type	
Remarks					
Action		Date		Type	
Remarks					
Action		Date		Type	
Remarks					
Action		Date		Type	
Remarks					

Funding Information					
Fiscal Yr	Source	Phase	Federal	Match	Total
2020	TAP	CON	\$231,400	\$57,850	\$289,250
Project Totals			\$231,400	\$57,850	\$289,250

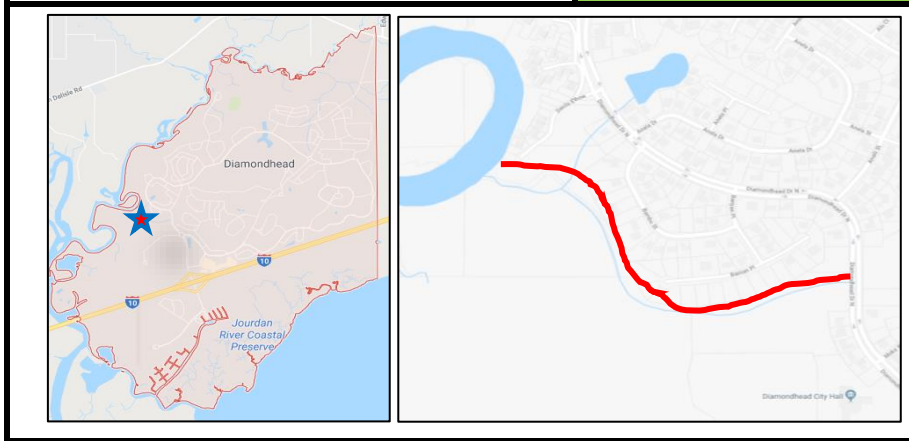
Mississippi Gulf Coast Metropolitan Planning Organization

FY2019-2022 Transportation Improvement Program (TIP)



County	Hancock	Agency	Diamondhead	MPO Cost	\$80,000	Total Cost	\$100,000	TIP Year	20	Project #	(18/20)
Improvement Type	Multiuse Pathway					Route	Montjoy Creek Nature Trail				

	Project Termini	Diamondhead Dr. to Rotten Bayou
	Project Description	Construct a new multiuse pathway along Montjoy Creek to Rotten Bayou at end of Devil's Elbow.



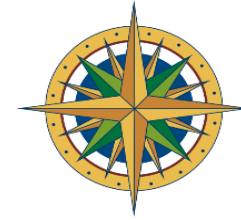
Project Notes					
---------------	--	--	--	--	--

Action	Add to TIP	Date	8/23/2018	Type	Amend
Remarks	\$80,000 TAP				
Action		Date		Type	
Remarks					
Action		Date		Type	
Remarks					
Action		Date		Type	
Remarks					
Action		Date		Type	
Remarks					
Action		Date		Type	
Remarks					
Action		Date		Type	
Remarks					

Funding Information					
Fiscal Yr	Source	Phase	Federal	Match	Total
2020	TAP	CON	\$80,000	\$20,000	\$100,000
Project Totals			\$80,000	\$20,000	\$100,000

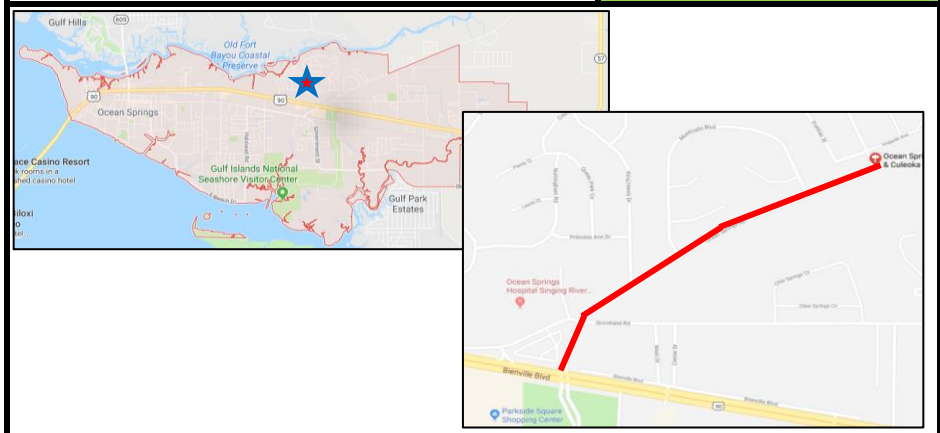
Mississippi Gulf Coast Metropolitan Planning Organization

FY2019-2022 Transportation Improvement Program (TIP)



County	Jackson	Agency	Ocean Springs	MPO Cost	\$2,258,400	Total Cost	\$2,823,000	TIP Year	21	Project #	(18/21)
Improvement Type	Reconstruction						Route	Ocean Springs Rd.			

Project Termini	Hwy 90 to Culeoka Dr. (.68 mile)
Project Description	Reconstruction to include medians, turning bays and bike/ped amenities



Project Notes

Action	Add to TIP	Date	8/23/2018	Type	Amend
Remarks	\$2,258,400 STBG				
Action		Date		Type	
Remarks					
Action		Date		Type	
Remarks					
Action		Date		Type	
Remarks					
Action		Date		Type	
Remarks					
Action		Date		Type	
Remarks					
Action		Date		Type	
Remarks					

Funding Information					
Fiscal Yr	Source	Phase	Federal	Match	Total
2021	TMA	CON	\$2,258,400	\$564,600	\$2,823,000
Project Totals			\$2,258,400	\$564,600	\$2,823,000

Mississippi Gulf Coast Metropolitan Planning Organization

FY2019-2022 Transportation Improvement Program (TIP)



County	Harrison	Agency	Harrison Co	MPO Cost	\$1,360,000	Total Cost	\$1,700,000	TIP Year	21	Project #	(18/21)
Improvement Type	Reconstruction					Route	Landon Rd.				
				Project Termini	Coleman Rd. to 34th Ave. (.25 mile)						
				Project Description	Connect with Gulfport project to widen and add bike/ped facilities						
Project Notes											
Action	Add to TIP	Date	8/23/2018	Type	Amend						
Remarks	\$1,360,000 STBG										
Action		Date		Type							
Remarks											
Action		Date		Type							
Remarks											
Action		Date		Type							
Remarks											
Action		Date		Type							
Remarks											
Action		Date		Type							
Remarks											
Action		Date		Type							
Remarks											
Funding Information											
Fiscal Yr	Source	Phase	Federal	Match	Total	Action		Date		Type	
2021	TMA	CON	\$1,360,000	\$340,000	\$1,700,000	Remarks					
						Action		Date		Type	
						Remarks					
						Action		Date		Type	
						Remarks					
						Action		Date		Type	
						Remarks					
						Action		Date		Type	
						Remarks					
Project Totals			\$1,360,000	\$340,000	\$1,700,000	Action		Date		Type	
						Remarks					

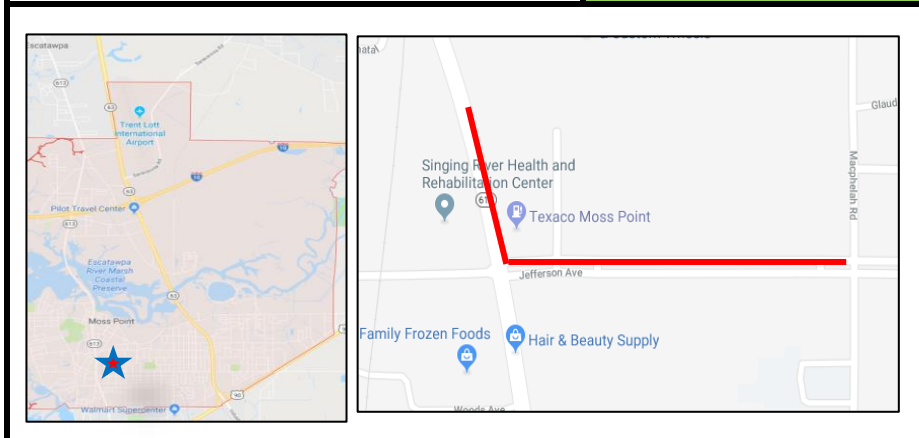
Mississippi Gulf Coast Metropolitan Planning Organization

FY2019-2022 Transportation Improvement Program (TIP)



County	Jackson	Agency	Moss Point	MPO Cost	\$412,000	Total Cost	\$515,000	TIP Year	21	Project #	(18/21)
Improvement Type	Sidewalk					Route	Jefferson St.				

Project Termini	Main St. to 2nd St. (1.5 Miles)
Project Description	~800' of 5' sidewalk on Main St. and .9 mile on one side of Jefferson St.



Project Notes					
Action	Add to TIP	Date	8/23/2018	Type	Amend
Remarks	\$412,000 Non-Urban STBG				
Action		Date		Type	
Remarks					
Action		Date		Type	
Remarks					
Action		Date		Type	
Remarks					
Action		Date		Type	
Remarks					
Action		Date		Type	
Remarks					
Action		Date		Type	
Remarks					

Funding Information					
Fiscal Yr	Source	Phase	Federal	Match	Total
2021	Non-urb	CON	\$412,000	\$103,000	\$515,000
Project Totals			\$412,000	\$103,000	\$515,000

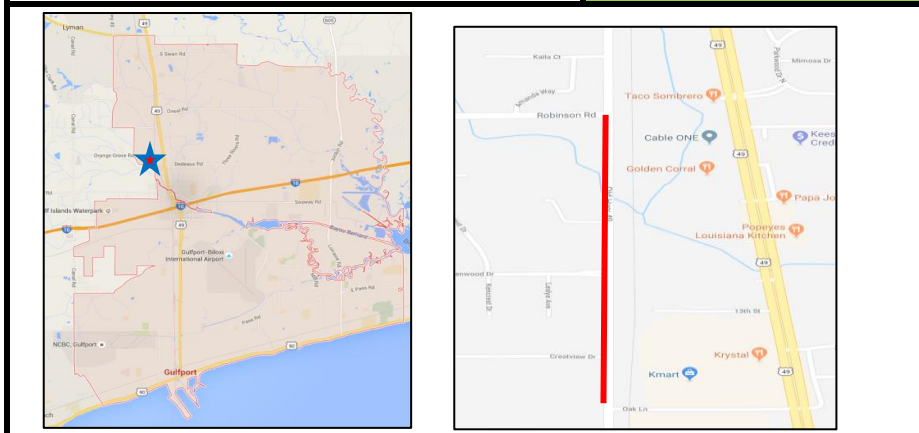
Mississippi Gulf Coast Metropolitan Planning Organization

FY2019-2022 Transportation Improvement Program (TIP)



County	Harrison	Agency	Gulfport	MPO Cost	\$160,000	Total Cost	\$200,000	TIP Year	21	Project #	(18/21)
Improvement Type	Sidewalk					Route	Old Hwy 49				

Project Termini		Robinson Rd. to Oak Ln.
Project Description		5' sidewalk to serve new library, and surrounding community



Project Notes					
Action	Add to TIP	Date	8/23/2018	Type	Amend
Remarks	\$160,000 TAP				
Action		Date		Type	
Remarks					
Action		Date		Type	
Remarks					
Action		Date		Type	
Remarks					
Action		Date		Type	
Remarks					

Funding Information					
Fiscal Yr	Source	Phase	Federal	Match	Total
2020	TAP	CON	\$160,000	\$40,000	\$200,000
Project Totals			\$160,000	\$40,000	\$200,000

Action		Date		Type	
Remarks					
Action		Date		Type	
Remarks					
Action		Date		Type	
Remarks					
Action		Date		Type	
Remarks					

Mississippi Gulf Coast Metropolitan Planning Organization

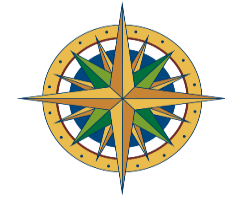
FY2019-2022 Transportation Improvement Program (TIP)



County	Hancock	Agency	Hancock Co.	MPO Cost	\$240,000	Total Cost	\$300,000	TIP Year	21	Project #	(18/21)
Improvement Type	Pedestrian Accessibility					Route	Washington St.				
				Project Termini	Around Beach Blvd. Public Access Facilities						
				Project Description	improve sidewalk connectivity, add ramps where needed, construct beach pier accessible for wheelchairs.						
Project Notes											
Action	Add to TIP	Date	8/23/2018	Type	Amend						
Remarks	\$240,000 TAP										
Action		Date		Type							
Remarks											
Action		Date		Type							
Remarks											
Action		Date		Type							
Remarks											
Action		Date		Type							
Remarks											
Action		Date		Type							
Remarks											
Action		Date		Type							
Remarks											
Funding Information											
Fiscal Yr	Source	Phase	Federal	Match	Total	Action	Date	Type			
2021	TAP	CON	\$240,000	\$60,000	\$300,000						
						Remarks					
						Action	Date	Type			
						Remarks					
						Action	Date	Type			
						Remarks					
						Action	Date	Type			
						Remarks					
Project Totals			\$240,000	\$60,000	\$300,000	Action	Date	Type			
						Remarks					

Mississippi Gulf Coast Metropolitan Planning Organization

FY2019-2022 Transportation Improvement Program (TIP)



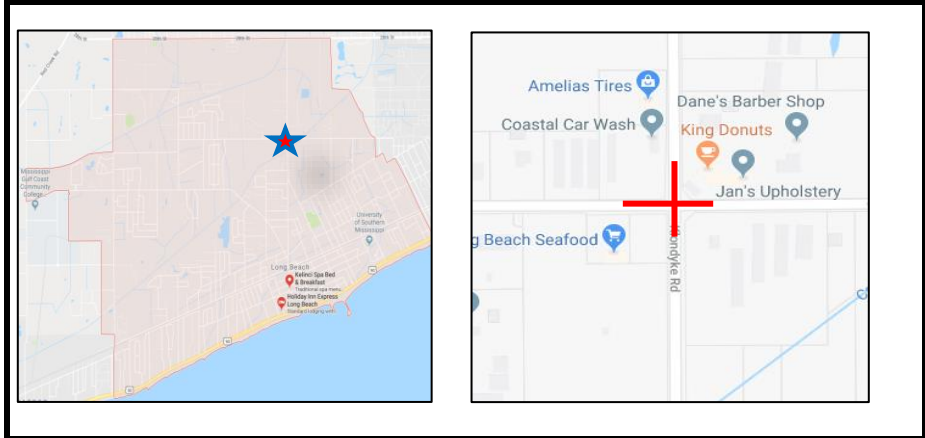
County	Harrison	Agency	Biloxi	MPO Cost	\$2,163,200	Total Cost	\$2,704,000	TIP Year	22	Project #	106253 (07/12)
Improvement Type	New Roadway Construction					Route	Popp's Ferry Rd.				
				Project Termini	Pass Rd. south to Hwy 90 (.9 mile)						
				Project Description	Extend Popp's Ferry Road south across Pass Road to Hwy 90. Includes multi modal facilities, a new signal, a rail crossing, ROW purchases using earmark funds, and improvements to a small section of existing roadway south of the Pass Road intersection						
				Project Notes							
				Action	TIP Add	Date	11/29/2007	Type	Amend		
				Remarks	\$2,000,000 STP added to TIP						
				Action	Change	Date	5/7/2011	Type	Amend		
				Remarks	Change termini from "Coliseum to Pass Rd" to "Pass Rd to Hwy 90"						
				Action	Add Funds	Date	5/7/2011	Type	Amend		
				Remarks	ENV-\$550,000/\$137,500, Design \$400,000/\$100,000, ROW \$4,560,000/\$1,140,000, Con \$890,000/\$4,406,000						
				Action	Add Funds	Date	5/7/2011	Type	Mod		
				Remarks	\$163,200 Administrative Adjustment						
				Action	Year Change	Date	9/13/2013	Type	Mod		
				Remarks	Change CON FY from 12 to 18						
				Action	Year Change	Date	10/1/2013	Type	Mod		
				Remarks	Change CON FY from 18 to 19						
				Action	Year Change	Date	11/1/2015	Type	Mod		
				Remarks	Change CON FY from 19 to 18						
				Action	Update Funds	Date	8/25/2016	Type	Mod		
				Remarks	Update earmark: Balance of \$5,844,596 moved to ROW phase						
				Action	Year Change	Date	2/23/2017	Type	Mod		
				Remarks	Apply advance construction FY18/19						
				Action	Year Change	Date	4/27/2017	Type	Mod		
				Remarks	Shift Adv. Constr. From FY18/19 to FY19/20						
Funding Information											
Fiscal Year	Source	Phase	Federal	Match	Total						
18	Earmark	ROW	\$5,418,718	\$2,315,090	\$7,733,808						
22	TMA	CON	\$2,163,200	\$540,800	\$2,704,000						
Project Totals			\$2,163,200	\$540,800	\$2,704,000						

Mississippi Gulf Coast Metropolitan Planning Organization FY2019-2022 Transportation Improvement Program (TIP)



County	Harrison	Agency	Long Beach	MPO Cost	\$760,000	Total Cost	\$950,000	TIP Year	22	Project #	(18/22)
Improvement Type	Intersection					Route	Klondyke Rd.				

Project Termini		Commision Ave. Intersection									
Project Description		Intersection improvements									



Project Notes

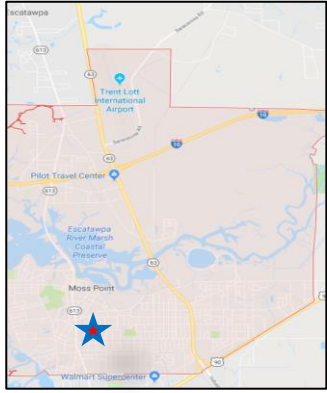
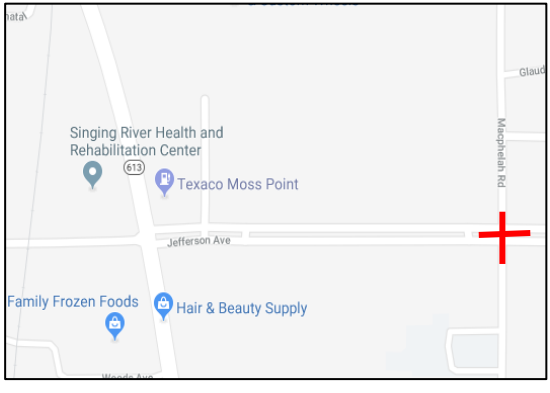
Action	Add to TIP	Date	8/23/2018	Type	Amend
Remarks	\$760,000 STBG				
Action		Date		Type	
Remarks					
Action		Date		Type	
Remarks					
Action		Date		Type	
Remarks					
Action		Date		Type	
Remarks					
Action		Date		Type	
Remarks					
Action		Date		Type	
Remarks					

Funding Information					
Fiscal Yr	Source	Phase	Federal	Match	Total
2022	TMA	CON	\$760,000	\$190,000	\$950,000
Project Totals			\$760,000	\$190,000	\$950,000

Mississippi Gulf Coast Metropolitan Planning Organization

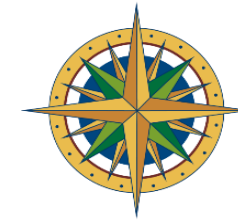
FY2019-2022 Transportation Improvement Program (TIP)



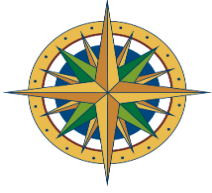
County	Jackson	Agency	Moss Point	MPO Cost	\$509,000	Total Cost	\$636,250	TIP Year	22	Project #	(18/22)
Improvement Type	Intersection					Route	Macphelah Rd.				
			Project Termini	Jefferson St. Intersection							
			Project Description	General intersection improvements, including signal							
											
Project Notes											
Action	Add to TIP	Date	8/23/2018	Type	Amend						
Remarks	\$509,000 Non-Urban STBG										
Action		Date		Type							
Remarks											
Action		Date		Type							
Remarks											
Action		Date		Type							
Remarks											
Action		Date		Type							
Remarks											
Action		Date		Type							
Remarks											
Action		Date		Type							
Remarks											
Funding Information											
Fiscal Yr	Source	Phase	Federal	Match	Total	Action		Date		Type	
2021	Non-Urb	CON	\$509,000	\$127,250	\$636,250	Remarks					
						Action		Date		Type	
						Remarks					
						Action		Date		Type	
						Remarks					
						Action		Date		Type	
						Remarks					
						Action		Date		Type	
						Remarks					
Project Totals			\$509,000	\$127,250	\$636,250	Action		Date		Type	
						Remarks					

Mississippi Gulf Coast Metropolitan Planning Organization

FY2019-2022 Transportation Improvement Program (TIP)



County	Hancock	Agency	Bay St Louis	MPO Cost	\$280,000	Total Cost	\$516,491	TIP Year	22	Project #	(18/22)
Improvement Type	Sidewalk					Route	Beyer Dr.				
				Project Termini	Carrol Ave. to Ranch St. (.3 mile)						
				Project Description	5' sidewalk on one side of the street						
Project Notes											
Action	Add to TIP	Date	8/23/2018	Type	Amend						
Remarks	\$280,000 TAP										
Action		Date		Type							
Remarks											
Action		Date		Type							
Remarks											
Action		Date		Type							
Remarks											
Action		Date		Type							
Remarks											
Action		Date		Type							
Remarks											
Action		Date		Type							
Remarks											
Funding Information											
Fiscal Yr	Source	Phase	Federal	Match	Total	Action		Date		Type	
22	TAP	CON	\$280,000	\$236,491	\$516,491	Action		Date		Type	
						Remarks					
						Action		Date		Type	
						Remarks					
						Action		Date		Type	
						Remarks					
						Action		Date		Type	
						Remarks					
Project Totals			\$280,000	\$236,491	\$516,491	Action		Date		Type	
						Remarks					



Mississippi Gulf Coast Metropolitan Planning Organization FY2019-2022 Transportation Improvement Program (TIP)

Illustrative Projects List

Illustrative List Description

Per CFR 450.326, an “Illustrative Project List” can be used for illustrative purposes as part of the TIP. This list includes projects evaluated by the MPO and deemed to be aligned with the goals and objectives of the region, but remain unprogrammed due to fiscal constraint requirements. They will be constructed if/when additional resources beyond those identified in the financial plan become available.

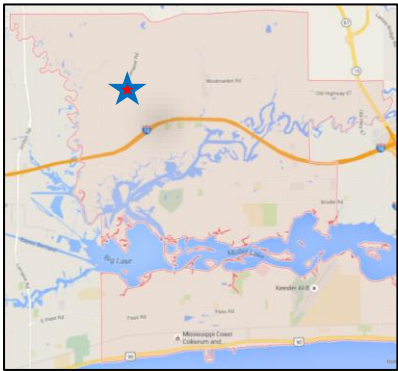
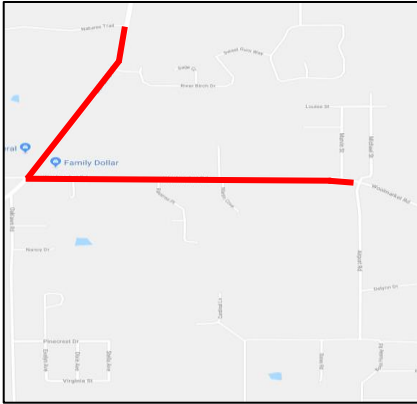
Moving TIP projects into and out of the Illustrative List will follow Administrative Modification procedures. All changes to the TIP, whether amendments or modifications, are documented in Appendix B.

Complete these sections as information becomes available

Agency	Project Description	TIP Date	Project #	Target Yr	Fed. Funds	Source	Obligation Yr
Biloxi	Popps Ferry Rd, Bridge replacement	5/21/2009	104384 (09/?)	TBD	TBD		
Gulfport	Airport Rd Recon. to and at Washington Ave.	6/25/2015	107222(15/17)	TBD	\$550,000		
D'Iberville	Popps Ferry Rd new segment, D'Iberville Blvd. to Belle St.	8/25/2016	107529(16/18)	20	\$2,938,780		
Gulfport	Dedeaux Rd Recon., Jessica Lane to Hwy 605	8/23/2018	(18/?)	TBD	\$3,760,000		
Group Funding Total					\$7,248,780		

Mississippi Gulf Coast Metropolitan Planning Organization FY2019-2022 Transportation Improvement Program (TIP)



County	Harrison	Agency	Biloxi	MPO Cost	\$880,000	Total Cost	\$1,100,000	TIP Year	Illustrative	Project #	(18/22)
Improvement Type	Sidewalk				Route	Woolmarket Rd. & Lorraine Rd.					
				Project Termini	East to Airport Rd. (.7 mile) and north to Nature's Trail (.5 mile)						
				Project Description	5' sidewalks one side of roadway						
 											
Project Notes											
Action	Add to TIP	Date	8/23/2018	Type	Amend						
Remarks	\$880,000 TAP										
Action		Date		Type							
Remarks											
Action		Date		Type							
Remarks											
Action		Date		Type							
Remarks											
Action		Date		Type							
Remarks											
Action		Date		Type							
Remarks											
Funding Information											
Fiscal Yr	Source	Phase	Federal	Match	Total						
ILL	TAP/TMA	CON	\$880,000	\$220,000	\$1,100,000						
Project Totals			\$880,000	\$220,000	\$1,100,000						
Action		Date		Type							
Remarks											

Mississippi Gulf Coast Metropolitan Planning Organization

FY2019-2022 Transportation Improvement Program (TIP)



County	Harrison	Agency	Biloxi	MPO Cost	\$12,000,000	Total Cost	\$15,000,000	TIP Year	Illustrative	Project #	104384 (09/?)
Improvement Type	Bridge Replacement					Route	Popps Ferry Road				

	Project Termini	.3 miles of bridge
	Project Description	Replace the existing Popps Ferry bridge



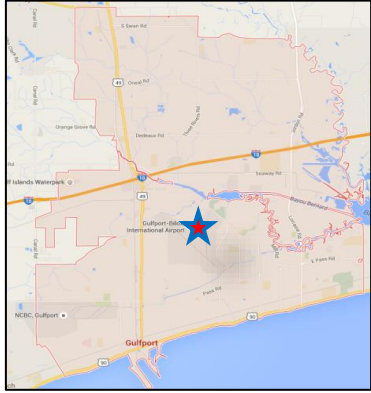
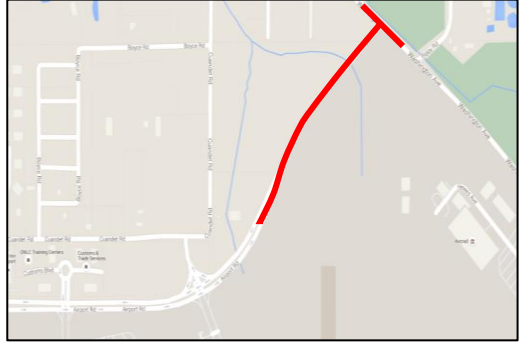
Project Notes					
Action	Add to TIP	Date	5/21/2009	Type	Amend
Remarks	\$4,000,000 Earmark Funds (Environmental Phase)				
Action	Change year	Date	10/1/2012	Type	Mod
Remarks	Move ENV from FY12 to FY13				
Action	Add Funds	Date	9/13/2013	Type	Amend
Remarks	Add \$8,000,000 Earmark Funds (Construction Phase)				
Action	Review	Date	8/31/2017	Type	N/A
Remarks	No CON yr assigned - MPO illustrative List				
Action		Date		Type	
Remarks					
Action		Date		Type	
Remarks					
Action		Date		Type	
Remarks					
Action		Date		Type	
Remarks					

Funding Information					
Fiscal Yr	Source	Phase	Federal	Match	Total
ILL	Earmark	ENV	\$4,000,000	\$1,000,000	\$5,000,000
ILL	Earmark	CON	\$8,000,000	\$2,000,000	\$10,000,000
Project Totals			\$12,000,000	\$3,000,000	\$15,000,000

Mississippi Gulf Coast Metropolitan Planning Organization

FY2019-2022 Transportation Improvement Program (TIP)



County	Harrison	Agency	Gulfport	MPO Cost	\$550,000	Total Cost	\$700,000	TIP Year	Illustrative	Project #	107222 (15/17)
Improvement Type	Reconstruction of Roadway					Route	Airport Road				
			Project Termini	Washington Ave to the existing 4 lane segment (.25 mile)							
			Project Description	Widen Airport Road from 2 to 4 lanes and build roundabout at Washington Ave.							
 						Project Notes					
Action		Add to TIP	Date	6/25/2015	Type	Amend					
Remarks		\$550,000 STP									
Action		Change Year	Date	2/23/2017	Type	Mod					
Remarks		Move CON year from FY17 & FY19									
Action		Change Year	Date	8/23/2018	Type	Mod					
Remarks		Move project to the Illustrative List									
Action			Date		Type						
Remarks											
Action			Date		Type						
Remarks											
Action			Date		Type						
Remarks											
Action			Date		Type						
Remarks											
Action			Date		Type						
Remarks											
Funding Information						Action					
Fiscal Yr	Source	Phase	Federal	Match	Total	Date					Type
ILL	TMA	CON	\$550,000	\$150,000	\$700,000						
Project Totals			\$550,000	\$150,000	\$700,000	Date					Type
						Remarks					

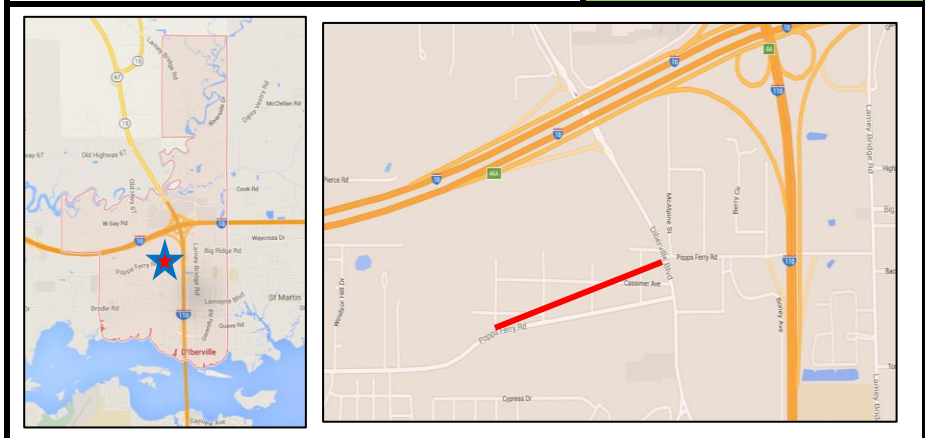
Mississippi Gulf Coast Metropolitan Planning Organization

FY2019-2022 Transportation Improvement Program (TIP)



County	Harrison	Agency	D'Iberville	MPO Cost	\$2,938,780	Total Cost	\$3,673,474	TIP Year	Illustrative	Project #	107529 (16/18)
Improvement Type	New Roadway Construction					Route	Popp's Ferry Road				

Project Termini		Belle St to Galeria Parkway/D'Iberville Blvd (.5 mile)
Project Description		Realignment of Popp's Ferry to new roadway - construct new segment of multimodal roadway



Project Notes					
Action	Add to TIP	Date	8/25/2016	Type	Amend
Remarks	\$2,938,779 STP ☑				
Action	Change Year	Date	2/23/2017	Type	Mod
Remarks	Advance construction FY18 and FY19				
Action	Change Year	Date	8/31/2017	Type	Mod
Remarks	Remove advance construction, all funds in FY20				
Action	Change Year	Date	8/23/2018	Type	Mod
Remarks	Move to illustrative List				
Action		Date		Type	
Remarks					
Action		Date		Type	
Remarks					
Action		Date		Type	
Remarks					
Action		Date		Type	
Remarks					

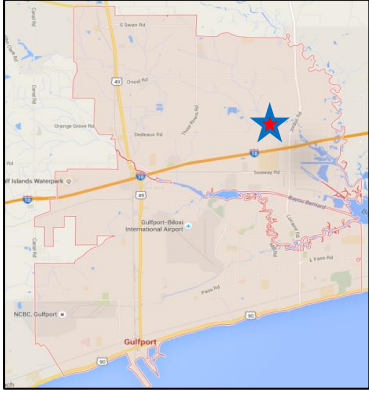
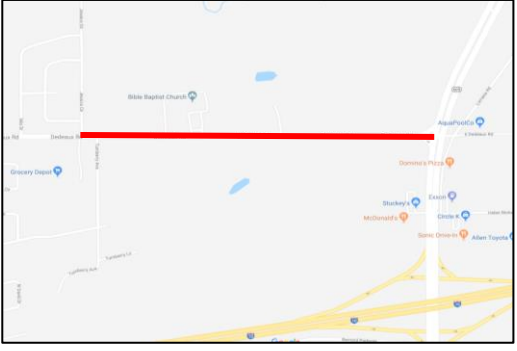
Funding Information					
Fiscal Yr	Source	Phase	Federal	Match	Total
ILL	TMA	CON	\$2,938,780	\$734,694	\$3,673,474
Project Totals			\$2,938,780	\$734,694	\$3,673,474

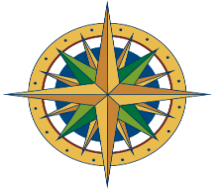
Action		Date		Type	
Remarks					
Action		Date		Type	
Remarks					
Action		Date		Type	
Remarks					
Action		Date		Type	
Remarks					

Mississippi Gulf Coast Metropolitan Planning Organization

FY2019-2022 Transportation Improvement Program (TIP)



County	Harrison	Agency	Gulfport	MPO Cost	\$3,760,000	Total Cost	\$4,700,000	TIP Year	Illustrative	Project #		
Improvement Type		Reconstruction					Route	Dedeaux Road Phase II				
			Project Termini		Hwy 605 to Jessican Ln. (.67 mile)							
			Project Description		Widening and adding bike/ped facilities							
 			Project Notes									
Action		Add to TIP	Date	8/23/2018	Type	Amend						
Remarks		\$3,760,000 added to Illustrative List										
Action		Date		Type								
Remarks												
Action		Date		Type								
Remarks												
Action		Date		Type								
Remarks												
Action		Date		Type								
Remarks												
Funding Information												
Fiscal Yr	Source	Phase	Federal	Match	Total							
ILL	TMA	CON	\$3,760,000	\$940,000	\$4,700,000							
Project Totals			\$3,760,000	\$940,000	\$4,700,000							
Action		Date		Type								
Remarks												



Mississippi Gulf Coast Metropolitan Planning Organization

FY2019-2022 Transportation Improvement Program (TIP)

Group Name

Get To B Safety Group (G2B)

Group Description

This group is funded with a \$500,000 set aside of MPO STBG funds annually. These funds are utilized to meet regional safety objectives of the Get To B Transportation Safety Program. G2B funds are used for professional development and safety training, peer exchange activities as well as to implement proven countermeasures to improve local road safety.

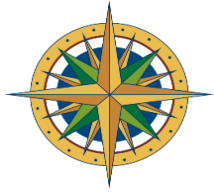
Funding Information

Fiscal Yr	Source	Phase	Federal	Match	Total
17-20	TMA	Carryover			\$0
2019	TMA	ENV to CON	\$500,000		\$500,000
2020	TMA	ENV to CON	\$500,000		\$500,000
2021	TMA	ENV to CON	\$500,000		\$500,000
2022	TMA	ENV to CON	\$500,000		\$500,000
Group Totals			\$2,000,000	\$0	\$2,000,000

Complete these sections as information becomes available

Agency	Project Description	TIP Date	Project #	Target Yr	Fed. Funds	Obligation Yr
GRPC	Traffic signal prioritization (Gulfport & Biloxi) CON Phase	7/20/2017		2019	\$500,000	
					\$500,000	

The projects contained in this "grouped" list are not individually listed in the STIP. These projects individually or cumulatively have no significant environmental impact and therefore are deemed Categorical Exclusions.



Mississippi Gulf Coast Metropolitan Planning Organization

FY2019-2022 Transportation Improvement Program (TIP)

Group Name Bridge Group

Group Description

This group is funded with a \$300,000 set aside of MPO STBG funds annually. This is a first come first serve group to address bridge repair and replacement needs as they arise. A maximum of \$300,00 will be spent in support of bridge activities per fiscal year. This group was added during development of the FY19-22 TIP and will start in FY21.

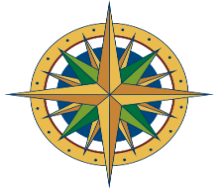
Funding Information

Fiscal Yr	Source	Phase	Federal	Match	Total
2019	Group begins in FY2021				
2020					
2021	TMA	CON	\$300,000	varies	\$300,000
2022	TMA	CON	\$300,000	varies	\$300,000
Group Totals			\$600,000	\$0	\$600,000

Complete these sections as information becomes available

Agency	Project Description	TIP Date	Project #	Target Yr	Fed. Funds	Obligation Yr
Biloxi	Cedar Lake Bridge A.C. FY21	8/23/2018	(18/21)	21	\$300,000	
Biloxi	Cedar Lake Bridge A.C. FY22	8/23/2018	(18/22)	22	\$260,000	
Group Funding Total					\$560,000	

The projects contained in this "grouped" list are not individually listed in the STIP. These projects individually or cumulatively have no significant environmental impact and therefore are deemed Categorical Exclusions.



Mississippi Gulf Coast Metropolitan Planning Organization

FY2019-2022 Transportation Improvement Program (TIP)

Group Name Bicycle/Pedestrian/Transit Group (BPT)

Group Description

This group is funded with a \$500,000 set aside of MPO STBG funds annually. Agency's apply for available funds during the annual "call for projects." B/P/T projects are scored against each other to determine funding prioritization. These are stand alone projects with specific intent to improve alternative travel options on the Gulf Coast.

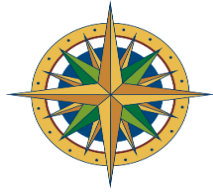
Funding Information

Fiscal Yr	Source	Phase	Federal	Match	Total
17-20	TMA	Carryover			\$500,000
2019	TMA	ENV to CON	\$500,000	\$125,000	\$625,000
2020	TMA	ENV to CON	\$500,000	\$125,000	\$625,000
2021	TMA	ENV to CON	\$500,000	\$125,000	\$625,000
2022	TMA	ENV to CON	\$500,000	\$125,000	\$625,000
Group Totals			\$2,000,000	\$500,000	\$3,000,000

Complete these sections as information becomes available

Agency	Project Description	TIP Date	Project #	Target Yr	Fed. Funds	Obligation Yr
Pass Christian	North St sidewalk, High School to Pass Estates	6/25/2015	107343(15/19)	19	\$452,800	
Gulfport	20th Ave accessibility from Hwy 90 to 15th St.	2/23/2017	107556 (17/19)	19	\$507,169	
Ocean Springs	E. Beach multiuse pathway from Holcomb Blvd. to Halstead Rd.	8/23/2018	(18/20)	20	\$384,000	
Long Beach	Pineville Ph. II sidewalks, Harper McCaughan to Klondyke Rd.	8/23/2018	(18/21)	21	\$400,000	
Bay St Louis	Washington St. sidewalks, Old Spanish Trl. to St. Francis St.	8/23/2018	(18/20)	20	\$120,000	
Group Funding Total					\$1,863,969	

The projects contained in this "grouped" list are not individually listed in the STIP. These projects individually or cumulatively have no significant environmental impact and therefore are deemed Categorical Exclusions.



Mississippi Gulf Coast Metropolitan Planning Organization

FY2019-2022 Transportation Improvement Program (TIP)

Group Name Studies & Projects Group (S&P)

Group Description

This group is funded with a \$500,000 set aside of MPO STBG funds annually. Agency's can request to use available study funds at any time. A Study specific application is submitted with the LPA's request letter. Award is conditional on funding availability and alignment with MPO goals. Projects that are developed as the result of a study, receive bonus points in the general TIP application ranking process.

Funding Information

Fiscal Yr	Source	Phase	Federal	Match	Total
17-20	TMA	Carryover			\$206,000
2019	TMA	ENV to CON	\$500,000	\$125,000	\$625,000
2020	TMA	ENV to CON	\$500,000	\$125,000	\$625,000
2021	TMA	ENV to CON	\$500,000	\$125,000	\$625,000
2022	TMA	ENV to CON	\$500,000	\$125,000	\$625,000
Group Totals			\$2,000,000	\$500,000	\$2,706,000

Complete these sections as information becomes available

Agency	Project Description	TIP Date	Project #	Target Yr	Fed. Funds	Obligation Yr
Pass Christian	Clark St Bridge Replacement	3/1/2018	(18/18)	18	\$189,896	
Group Funding Total					\$189,896	

The projects contained in this "grouped" list are not individually listed in the STIP. These projects individually or cumulatively have no significant environmental impact and therefore are deemed Categorical Exclusions.



Mississippi Gulf Coast Metropolitan Planning Organization

FY2019-2022 Transportation Improvement Program (TIP)

Coast Transit Authority FY2019 TIP

FY	Project	Fund Source	FTA	CTA	Total
2019	Gulfport Tram Bridge Project	Sec 5339 or BUILD	\$12,800,000	\$3,200,000	\$16,000,000
2019	Operating Assistance For Period 10/01/18 Through 9/30/19	Sec 5307	\$2,325,000	\$2,325,000	\$4,650,000
2019	Preventive Maintenance	Sec 5307 or 5310	\$1,280,000	\$320,000	\$1,600,000
2019	Marketing/Planning	Sec 5307	\$240,000	\$60,000	\$300,000
2019	Computer Equipment	Sec 5307	\$20,000	\$5,000	\$25,000
2019	Shop Equipment	Sec 5307	\$16,000	\$4,000	\$20,000
2019	ADA Operating Expense	Sec 5307	\$280,000	\$70,000	\$350,000
2019	Transit Enhancements	Sec 5307	\$60,000	\$15,000	\$75,000
2019	Facility Rehab & Renovations	Sec 5307	\$160,000	\$40,000	\$200,000
2019	Purchase Office Equipment	Sec 5307	\$16,000	\$4,000	\$20,000
2019	Purchase Farebox Equipment	Sec 5307	\$40,000	\$10,000	\$50,000
2019	Purchase Communication Equipment	Sec 5307	\$80,000	\$20,000	\$100,000
2019	Purchase Revenue Vehicles	Sec 5307, 5310 or 5339	\$800,000	\$200,000	\$1,000,000
2019	Purchase Support Vehicles	Sec 5307	\$36,000	\$9,000	\$45,000
2019	JARC Purchased Transportation	Sec 5307	\$365,000	\$0	\$365,000
2019	Mobility Manager	Sec 5307	\$44,000	\$11,000	\$55,000
2019	Electric Bus Project	Sec 5339	\$880,000	\$220,000	\$1,100,000
Totals			\$19,442,000	\$6,513,000	\$25,955,000

Coast Transit Authority FY2020 TIP

FY	Project	Fund Source	FTA	CTA	Total
2020	Operating Assistance For Period 10/01/19 Through 9/30/20	Sec 5307	\$2,400,000	\$2,400,000	\$4,800,000
2020	Preventive Maintenance	Sec 5307 or 5310	\$1,360,000	\$340,000	\$1,700,000
2020	Marketing/Planning	Sec 5307	\$240,000	\$60,000	\$300,000
2020	Computer Equipment	Sec 5307	\$20,000	\$5,000	\$25,000
2020	Shop Equipment	Sec 5307	\$16,000	\$4,000	\$20,000

2020	ADA Operating Expense	Sec 5307	\$296,000	\$74,000	\$370,000
2020	Transit Enhancements	Sec 5307	\$140,000	\$35,000	\$175,000
2020	Facility Rehab & Renovations	Sec 5307	\$200,000	\$50,000	\$250,000
2020	Purchase Office Equipment	Sec 5307	\$16,000	\$4,000	\$20,000
2020	Purchase Farebox Equipment	Sec 5307	\$40,000	\$10,000	\$50,000
2020	Purchase Communication Equipment	Sec 5307	\$80,000	\$20,000	\$100,000
2020	Purchase Revenue Vehicles	Sec 5307, 5310 or 5339	\$800,000	\$200,000	\$1,000,000
2020	Purchase Support Vehicles	Sec 5307	\$36,000	\$9,000	\$45,000
2020	JARC Purchased Transportation	Sec 5307	\$365,000	\$0	\$365,000
2020	Mobility Manager	Sec 5307	\$48,000	\$12,000	\$60,000
Totals			\$6,057,000	\$3,223,000	\$9,280,000

Coast Transit Authority FY2021 TIP

FY	Project	Fund Source	FTA	CTA	Total
2021	Operating Assistance For Period 10/01/20 Through 9/30/21	Sec 5307	\$2,550,000	\$2,550,000	\$5,100,000
2021	Preventive Maintenance	Sec 5307 or 5310	\$1,440,000	\$340,000	\$1,800,000
2021	Marketing/Planning	Sec 5307	\$240,000	\$60,000	\$300,000
2021	Computer Equipment	Sec 5307	\$20,000	\$5,000	\$25,000
2021	Shop Equipment	Sec 5307	\$16,000	\$4,000	\$20,000
2021	ADA Operating Expense	Sec 5307	\$312,000	\$78,000	\$390,000
2021	Transit Enhancements	Sec 5307	\$80,000	\$20,000	\$100,000
2021	Facility Rehab & Renovations	Sec 5307	\$200,000	\$50,000	\$250,000
2021	Purchase Office Equipment	Sec 5307	\$16,000	\$4,000	\$20,000
2021	Purchase Farebox Equipment	Sec 5307	\$40,000	\$10,000	\$50,000
2021	Purchase Communication Equipment	Sec 5307	\$80,000	\$20,000	\$100,000
2021	Purchase Revenue Vehicles	Sec 5307, 5310 or 5339	\$800,000	\$200,000	\$1,000,000
2021	Purchase Support Vehicles	Sec 5307	\$36,000	\$9,000	\$45,000
2021	JARC Purchased Transportation	Sec 5307	\$375,000	\$0	\$375,000
2021	Mobility Manager	Sec 5307	\$48,000	\$12,000	\$60,000
Totals			\$6,253,000	\$3,362,000	\$9,635,000

Coast Transit Authority FY2022 TIP

FY	Projcet	Fund Source	FTA	CTA	Total
2022	Operating Assistance For Period 10/01/21 Through 9/30/22	Sec 5307	\$2,700,000	\$2,700,000	\$5,400,000
2022	Preventive Maintenance	Sec 5307 or 5310	\$1,520,000	\$380,000	\$1,900,000
2022	Marketing/Planning	Sec 5307	\$240,000	\$60,000	\$300,000
2022	Computer Equipment	Sec 5307	\$20,000	\$5,000	\$25,000
2022	Shop Equipment	Sec 5307	\$16,000	\$4,000	\$20,000
2022	ADA Operating Expense	Sec 5307	\$312,000	\$78,000	\$390,000
2022	Transit Enhancements	Sec 5307	\$80,000	\$20,000	\$100,000
2022	Facility Rehab & Renovations	Sec 5307	\$200,000	\$50,000	\$250,000
2022	Purchase Office Equipment	Sec 5307	\$16,000	\$4,000	\$20,000
2022	Purchase Farebox Equipment	Sec 5307	\$40,000	\$10,000	\$50,000
2022	Purchase Communication Equipment	Sec 5307	\$80,000	\$20,000	\$100,000
2022	Purchase Revenue Vehicles	Sec 5307, 5310 or 5339	\$800,000	\$200,000	\$1,000,000
2022	Purchase Support Vehicles	Sec 5307	\$36,000	\$9,000	\$45,000
2022	JARC Purchased Transportation	Sec 5307	\$375,000	\$0	\$375,000
2022	Mobility Manager	Sec 5307	\$48,000	\$12,000	\$60,000
Totals			\$6,483,000	\$3,552,000	\$10,035,000

**MISSISSIPPI DEPARTMENT OF TRANSPORTATION
2019 - 2022 STATEWIDE TRANSPORTATION IMPROVEMENT PROGRAM
ALL STIP PROJECTS**

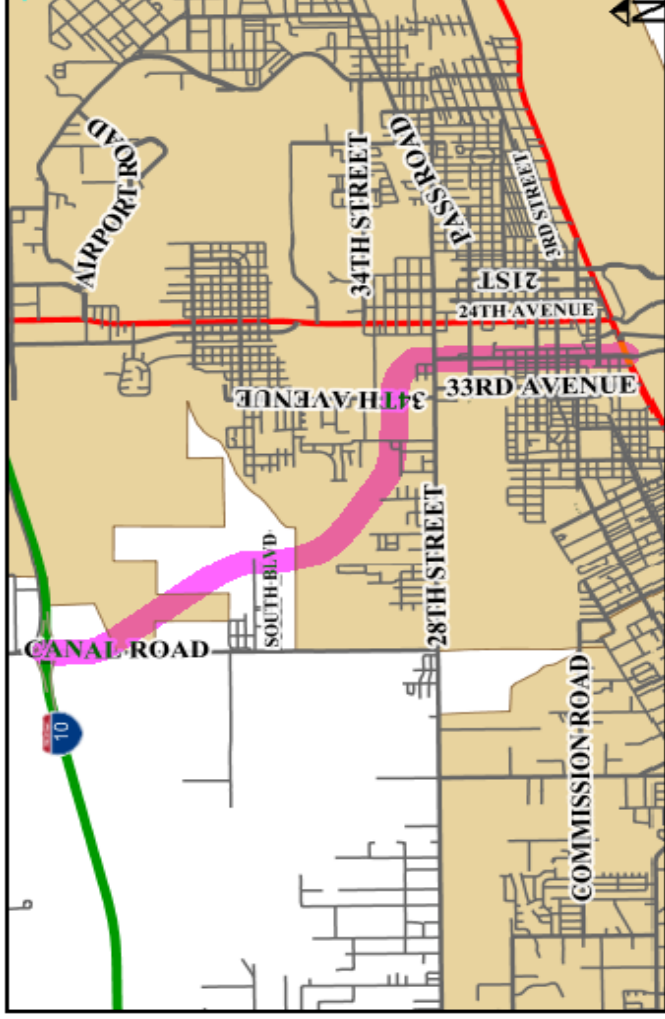
County: Harrison

STIP ID: 240200 **Project Title:** SR 601/CANAL ROAD HARRISON COUNTY - DEBT SERVICE **Total Project Cost:** \$130,000,000
Route: MS 601/CANAL ROAD **Project Length:** 5
Fund Source: STP/INHS/BOND/SFP/INHP

Proj No	FY	Scope Of Work	Resp Agcy	Phase	Fed	State/Local	Total Cost Est
501561-602000	2019	GR DR BR PAVE	MDOT	OTH/AC	\$16,096,850	\$4,024,212	\$20,121,062
Termini:		SR 601 (CANAL RD)BT PORTA-10					
501561-602002	2019	GR DR BR PAVE	MDOT	OTH/AC	\$17,573,917	\$4,393,479	\$21,967,396
Termini:		HE.L.P. Projects - Debt Service Harrison (B)					
501561-602000	2020	GR DR BR PAVE	MDOT	OTH/AC	\$16,096,850	\$4,024,212	\$20,121,062
Termini:		SR 601 (CANAL RD)BT PORTA-10					
501561-602002	2020	GR DR BR PAVE	MDOT	OTH/AC	\$17,573,917	\$4,393,479	\$21,967,396
Termini:		HE.L.P. Projects - Debt Service Harrison (B)					
501561-602000	2021	GR DR BR PAVE	MDOT	OTH/AC	\$16,096,850	\$4,024,212	\$20,121,062
Termini:		SR 601 (CANAL RD)BT PORTA-10					
501561-602002	2021	GR DR BR PAVE	MDOT	OTH/AC	\$17,573,918	\$4,393,480	\$21,967,398
Termini:		HE.L.P. Projects - Debt Service Harrison (B)					
SUB-TOTAL FOR STIP ID 240200:					\$101,012,301	\$25,253,075	\$126,265,376

This project details the repayment of debt service on a \$102,000,000 HELP bond issue for the construction of Canal Road. This project uses Advance Construction. See the explanation in the Introduction for a description of this funding technique.

SUB-TOTAL FOR HARRISON COUNTY: **\$105,012,301** **\$26,253,075** **\$131,265,376**



**MISSISSIPPI DEPARTMENT OF TRANSPORTATION
2019 - 2022 STATEWIDE TRANSPORTATION IMPROVEMENT PROGRAM
ALL STIP PROJECTS**

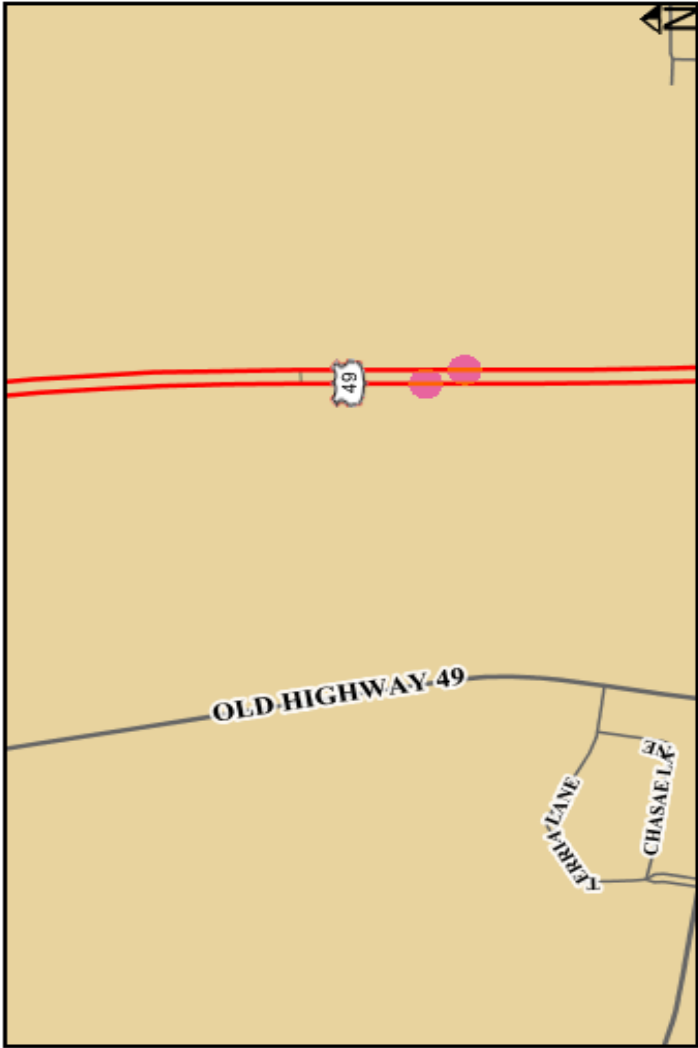
County: Harrison

STIP ID: 240117 **Project Title:** US 49 FROM O'NEAL RD TO N OF SCHOOL RD **Total Project Cost:** \$52,202,500
Route: US 49 **Project Length:** 3.306

Fund Source: NHS/SFP/STP/NHPP

Proj No	FY	Scope Of Work	Resp Agcy	Phase	Fed	State/Local	Total Cost Est
102111-303000	2019	Bridge Replacement	MDOT	CON	\$4,000,000	\$1,000,000	\$5,000,000
Termini:		US 49 replace bridges over Flat Branch [Bridge # 8.0 A&B]					
SUB-TOTAL FOR STIP ID 240117:					\$4,000,000	\$1,000,000	\$5,000,000

SUB-TOTAL FOR HARRISON COUNTY: \$105,012,301 \$26,253,075 \$131,265,376





**MISSISSIPPI DEPARTMENT OF TRANSPORTATION
2019 - 2022 STATEWIDE TRANSPORTATION IMPROVEMENT PROGRAM
GULF COAST URBANIZED AREA GROUPED PROJECTS**

BRIDGE REPLACEMENT

Fiscal Year	Agency	Fund Source	Federal Share	State/Local Share	Total Cost
2019	MDOT/Local Agencies	NHPP/STBG/SFP/EARMARK/LOCAL	\$12,000,000	\$3,000,000	\$15,000,000
2020	MDOT/Local Agencies	NHPP/STBG/SFP/EARMARK/LOCAL	\$100,000	\$25,000	\$125,000
2021	MDOT/Local Agencies	NHPP/STBG/SFP/EARMARK/LOCAL	\$100,000	\$25,000	\$125,000
2022	MDOT/Local Agencies	NHPP/STBG/SFP/EARMARK/LOCAL	\$30,000,000	\$0	\$30,000,000
SUB-TOTAL FOR BRIDGE REPLACEMENT			\$42,200,000	\$3,050,000	\$45,250,000

OPERATION/MAINTENANCE/MINOR RECONSTRUCTION

Fiscal Year	Agency	Fund Source	Federal Share	State/Local Share	Total Cost
2019	MDOT/Local Agencies	NHPP/STBG/SFP/LOCAL	\$5,240,000	\$1,310,000	\$6,550,000
2020	MDOT/Local Agencies	NHPP/STBG/SFP/LOCAL	\$6,800,000	\$1,700,000	\$8,500,000
2021	MDOT/Local Agencies	NHPP/STBG/SFP/LOCAL	\$3,520,000	\$880,000	\$4,400,000
2022	MDOT/Local Agencies	NHPP/STBG/SFP/LOCAL	\$100,000	\$25,000	\$125,000
SUB-TOTAL FOR OPERATION/MAINTENANCE/MINOR RECONSTRUCTION			\$15,660,000	\$3,915,000	\$19,575,000

SAFETY

Fiscal Year	Agency	Fund Source	Federal Share	State/Local Share	Total Cost
2019	MDOT/Local Agencies	HSIP/NHPP/STBG/SFP/LOCAL	\$5,850,000	\$650,000	\$6,500,000
2020	MDOT/Local Agencies	HSIP/NHPP/STBG/SFP/LOCAL	\$100,000	\$25,000	\$125,000
2021	MDOT/Local Agencies	HSIP/NHPP/STBG/SFP/LOCAL	\$100,000	\$25,000	\$125,000
2022	MDOT/Local Agencies	HSIP/NHPP/STBG/SFP/LOCAL	\$100,000	\$25,000	\$125,000
SUB-TOTAL FOR SAFETY			\$6,150,000	\$725,000	\$6,875,000

TAP/TE/RECREATIONAL TRAILS/SRTS

Fiscal Year	Agency	Fund Source	Federal Share	State/Local Share	Total Cost
2019	MDOT/Local Agencies	TAP/TE/STBG/SFP/EARMARK/LOCAL	\$75,000	\$18,750	\$93,750
2020	MDOT/Local Agencies	TAP/TE/STBG/SFP/EARMARK/LOCAL	\$75,000	\$18,750	\$93,750
2021	MDOT/Local Agencies	TAP/TE/STBG/SFP/EARMARK/LOCAL	\$75,000	\$18,750	\$93,750
2022	MDOT/Local Agencies	TAP/TE/STBG/SFP/EARMARK/LOCAL	\$75,000	\$18,750	\$93,750
SUB-TOTAL FOR TAP/TE/RECREATIONAL TRAILS/SRTS			\$300,000	\$75,000	\$375,000

The projects contained in this "Grouped" list are not individually listed in the STIP. These projects individually or cumulatively have no significant environmental impact and therefore are deemed Categorical Exclusions.

**FY 2018-2021 Mid-Year Transportation Improvement Program
Federal Highway Administration
Eastern Federal Lands Highway Division**

MISSISSIPPI

Project	Program FY	State	County	Park, Refuge, Forest or Other Partner Agency	Description	Type of Work	Primary Fund Source	Total Programmed Amount	Funds from Title	Delivered By	Status	Congressional District	FLMA Region
MS_FLAP_CRNTH_145(1)	2018	MS	Alcorn	Shiloh National Military Park	North Polk St. (Route MS 145) Bridge and Road Improvements	3RL-BRRP	FLAP	\$3,314,600.00	Title 23	Local	In Design	MS-01	NPS_SE
MS_FLAP_PRNT_3485(1)_3560(1)	2018	MS	Prentiss	USACE / Bay Springs Lake	Widening and improve .85 miles of CR3560; Upgrade .57 miles of CR3485 to oblige with all modes.	3RH	FLAP	\$633,835.00	Title 23	State	In Design	MS-01	USACE_MVD
NATR_3Q8	2018	MS	Hinds	Natchez Trace Parkway	Overlay Park Road - PM project from MP.67.136 to MP.77.136	2R	FLTP	\$1,592,580.00	Title 23	EFLHD	Planned	MS-02	NPS_SE
NATR_3Q8	2018	MS	claiborne	Natchez Trace Parkway	Overlay Park Road - PM project from MP 45 to 59 (14.00 miles)	3RL-BRRP	FLTP	\$3,433,484.44	Title 23	EFLHD	In Design	MS-02	NPS_SE
NATR_3X7_3W13	2018	MS	Augusta	Natchez Trace Parkway	Overlay Park Road - PM project from MP 0 to 20 (20.00 miles)	3RL-BRRP	FLTP	\$2,840,043.00	Title 23	EFLHD	In Design	MS-03	NPS_SE
NP_VICK_12(5)20(2) LC	2018	MS	Warren	Vicksburg National Military Park	Emergency repair work for Confederate Avenue and union Avenue	3RH	FLTP	\$350,000.00	Title 23	EFLHD	Planned	MS-02	NPS_SE
SO MS ERFO FW PASW 2016-1(1)	2018	MS	Yazoo	Panther Swamp Nat'l Wildlife Refuge	Repair TX Eastern Spur Rd & Bombing Range Rd DSR PASW7-105-TESR-0.59-1.09/ PASW-12-T310-BRT-0.4-0.6	3RH	FLTP	\$72,065.00	Title 23	FWS	Planned	MS-02	FWS_R4
NP_GUI5_15(3)	2019	MS	Jackson	Gulf Islands National Seashore	Safety improvements on Park Road - paved shoulders, gaurdrail	NEW	NPS	\$640,000.00	Title 54	EFLHD	In Design	MS-04	NPS_SE
NP_NATR_3O19_3P24	2019	MS	Madison	Natchez Trace Parkway	Overlay Park Road from MP 103.7 to MP 110.32	3RL-BRRP	FLTP	\$1,753,429.00	Title 23	EFLHD	In Design	MS-02	NPS_SE
MS_FLAP_CALCO_820(1)	2020	MS	Calhoun	USACE/Grenada Lake Reservoir	Overlay 7.6 miles of CR306 and the replacement of 7 bridges	3RL-BRRP	FLAP	\$4,080,000.00	Title 23	State	In Design	MS-03	USACE_MVD
NP_NATR_3A17_2D11	2020	MS	Tishomongo, MS, Colbert, AL	Natchez Trace Parkway	Overlay Park Road from MP 299.16 to MP 316.55	3RL-BRRP	FLTP	\$3,550,790.00	Title 23	EFLHD	Planned	MS-08	NPS_SE
NP_VICK_12(4)_20(1)_21(1)	2020	MS	Warren	Vicksburg National Military Park	Repairs of Confederate Ave, Union Ave and Louisiana Circle	3RH	FLTP	\$1,304,717.00	Title 23	EFLHD	Planned	MS-02	NPS_SE
NP_NATR_3D34_3E15	2021	MS	Pontotoc, Lee	Natchez Trace Parkway	Overlay Park Road from MP 253.44 to MP 268.63	2R	FLTP	\$5,188,832.00	Title 23	EFLHD	Planned	MS-02	NPS_SE
NP_NATR_3E16_3F25	2021	MS	Pontotoc, Lee, Chickasaw	Natchez Trace Parkway	Overlay Park Road from MP 238.84 to MP 253.44	2R	FLTP	\$3,772,351.00	Title 23	EFLHD	Planned	MS-02	NPS_SE
NP_NATR_3O20	2021	MS	Madison	Natchez Trace Parkway	Overlay Park Road from MP 112.4 to MP 114.6	3RH	FLTP	\$4,840,621.00	Title 23	EFLHD	Planned	MS-02	NPS_SE
NATR_BMS_FY18(1)	2018	ZZ	Multiple	Multiple	Bridge Preventive Maintenance Projects	BRRH	FLTP	\$750,000.00	Title 23	EFLHD	Planned	Various	NPS_SE
NATR_BMS_FY19(1)	2019	ZZ	Multiple	Multiple	Bridge Preventive Maintenance Projects	BRRH	FLTP	\$500,000.00	Title 23	EFLHD	Planned	Various	NPS_SE
NP_SER_BMS_FY18(2)	2019	ZZ	Various	Various	FY18 Regionwide BMS, VNM Park 11 Structures	BRRH	FLTP	\$350,000.00	Title 23	EFLHD	Planned	Various	NPS_SE
SER_PMS_FY18(1)	2019	ZZ	Various	Various	Pavement Preservation Project for Small Parks	2R	FLTP	\$2,000,000.00	Title 23	EFLHD	Planned	Various	NPS_SE
SER_PMS_FY19(1)	2019	ZZ	Various	Various	FY19 Regionwide Pavement Preservation Projects	2R	FLTP	\$2,000,000.00	Title 23	EFLHD	Planned	Various	NPS_SE

Appendix A: Public Participation Summary

Materials will be added at completion of Public Review Period: July 1- August 15, 2018

APPENDIX B

MS Gulf Coast TIP: Updates, Amendments and Modifications Tracker

October 2013 Amendments/Modifications:

- Gulfport – Pass Road Traffic Signals/16 intersections - \$444,000 STP
- Jackson County – Hwy 609/Old Fort Bayou Rd - \$1,493,640 STP
- D’Iberville – Big Ridge Rd & D’Iberville Blvd/1-10, Dewey Lawrence, South - \$2,938,778 STP
- Jackson County – Lemoyne Blvd/Brittany Ave - \$308,000 STP
- Gulfport – Courthouse Rd/Pass Rd to US 90 - \$2,683,532 STP
- Bay St. Louis – Old Spanish Trail Lighting/Main St to City Limits - \$640,640 STP

Increase Funding (amendment)

- Biloxi - Poppo Ferry /Cedar Lake to D’Iberville Blvd - Add \$5,000,000 STP for a total of \$7,204,800 STP
- Pascagoula – Hospital Rd/Old Mobile Hwy to US 90 – Add \$1,798,817 STP for a total of \$2,293,217 STP
- Gautier – Martin Bluff Rd/Gautier-Vancleave Rd to Frontage Rd – Add \$2,392,005 STP for a total of \$3,328,005 STP

Remove Project (amendment)

- Pascagoula – Ingalls Ave/Chicot Rd. & Martin St. \$396,000 STP
- Harrison County – Hwy 605 Frontage Rd./Lorraine Rd to 2000’ North - \$726,800 STP
- D’Iberville – Automall Pkwy & Rodriguez St./D’Iberville Blvd to I-110 - \$200,000 STP
- Gulfport – Seaway Rd Pedestrian Path/Three Rivers Rd to Lorraine Rd - \$788,304 STP

Modifications

- Biloxi - Poppo Ferry Rd/Cedar Lake Rd to D’Iberville Blvd – Move from FY 2013 to FY 2015
- Gulfport – 28th St/34th Ave to 23rd Ave – Move from FY 2012 to FY 2014
- Jackson County – Old Fort Bayou Rd/Yellow Jacket Rd - Move from FY 2014 to FY 2015
- Biloxi – Poppo Ferry Road Extension/Pass Road to US 90 – Move from FY 2012 to FY 2018
- Gulfport – Seaway Rd/Three Rivers Rd to 1 mile east – Move from FY 2013 to FY 2014
- Pascagoula – Hospital Rd/Old Mobile Hwy to US 90 – Move from FY 2015 to FY 2016
- Bay St Louis – Old Spanish Trl/City Limits to Main St – Move from FY 2013 to FY 2014
- Gautier – Martin Bluff Rd/Gautier-Vancleave Rd to Frontage Rd - Move from FY 2013 to FY 2016
- Gulfport - Deadeaux Rd/ Three Rivers rd to Hwy 605 – Move from FY 2013 to FY 2015
- Gulfport – Ship Island Terminal Project/ Bert Jones Yacht Basin – Move from FY 2013 to FY 2015
- Bay St. Louis – US 90 Pedestrian Path/BSL Bridge to Main St - Move from FY 2013 to FY 2015
- Ocean Springs – Government St/Hanley Rd to Hanshaw Rd - Move from FY 2013 to FY 2014
- D’Iberville – D’Iberville Blvd/Central Ave to Automall Pkwy - Move from FY 2013 to FY 2015
- Pass Christian – Cedar Ave/RR to US 90 - Move from FY 2015 to FY 2018

· Biloxi – Reynoir St and Jackson St/Downtown Biloxi – Move from FY 2014 to FY 2015
· Harrison County – Biloxi River Bridge/Lorraine Rd – Move from FY 2013 to FY 2014
· Gautier – Hwy 57/Brown Rd - Move from FY 2013 to FY 2015
· Moss Point – Main St/South to Jefferson - Move from FY 2013 to FY 2015
· Moss Point – Second St/East Moss Point - Move from FY 2014 to FY 2015
March 2014 Amendments/Modifications:
· Ocean Springs – Porter Ave/Martin Avenue to Howard Ave – Move from FY 2013 to FY 2018
· Gulfport – Deadeaux Road/Three Rivers Rd to Hwy 605 – Move from FY 2015 to FY 2016
· Bay St. Louis – US 90 Pedestrian Path/BSL Bridge to Main St – Move from FY 2015 to FY 2016
· D’Iberville – D’Iberville Blvd/Central Ave to Automall Pkwy - Move from FY 2015 to FY 2016
· Harrison County – Biloxi River Bridge/Lorraine Rd – Change from FY 2014 to FY 2015
· Gautier – Hwy 57/Brown Road - Change from FY 2015 to FY 2016
· Gulfport – Pass Road Signal System/16 intersections - Change from FY 2014 to FY 2015
· Gulfport – Courthouse Rd/Pass Rd to US 90 – Change from FY 2018 to FY 2017
· D’Iberville – D’Iberville Blvd and Big Ridge Rd/ I-10 ramps – Change from FY 2015 to FY 2016
· Bay St Louis – Old Spanish Trl/Main St to Waveland Limits - Change from FY 2015 to FY 2016
June 2014 Amendments/Modifications:
Amendments
· Ocean Springs – Porter Avenue/Martin Avenue to Howard Avenue. Remove Project.
· Jackson County – Hwy 57/Old Spanish Trl to US 90. Remove Project.
· CTA – Purchase replacement mobile surveillance equipment. \$128,000 (FTA) \$32,000 (CTA) Add Project.
· CTA – Expansion of the Gulfport Transit Center Intermodal Hub. \$6,560,000 (FTA) \$1,640,000 (CTA) Add Project.
October 2014 Amendments/Modifications:
Modifications
· Advance construction strategy was implemented
March 2015 Amendments/Modifications:
Modifications
· Added \$1,550,000 in TE funds under the TAP group in 2015
June 2015 Amendments/Modifications:
Modifications
· Harrison Co.–Biloxi River Bridge. Move \$3,000,000 STP into FY14 from FY15. Leave balance of \$1,211,197 STP in FY16.
· Gautier - Martin Bluff Rd. Add ROW Phase. \$3,199,682 Fed. Earmark
· CTA – Change funding fiscal year. Expansion of Gulfport Transit Center Intermodal Hub. Move and split \$6,560,000 in FY 2015 to FY 2016 (\$3,280,000) and FY 2017(\$3,280,000).

Group Project Adjustments
· D'Iberville – Add project to Safety Group. D'Iberville Blvd and Boney Ave. Traffic signal. \$125,000 STP at 100%.
· D'Iberville – Remove project from Bike/Ped/Transit Group. D'Iberville Blvd/Central Ave to Automall Pkwy. \$97,002 STP
· GRPC – Adjust funding for safety projects to reflect each county's MOU.
· Long Beach – Added study. Pineville Rd. \$60,000
· Diamondhead – Added study. Circulation. \$60,000
Amendments
Remove from TIP
· Gulfport – Ship Island Terminal Project. \$560,301 STP
· Pass Christian – Cedar Ave/ Railroad to US 90. \$163,570 STP
Add to TIP
· Waveland - Waveland Avenue Sidewalk Project: \$1,264,000 STP
· Gulfport - Landon Road Widening Project PH I: \$1,000,000 STP
· Gulfport - Airport Road Improvements: \$550,000 STP
· Pass Christian - North Street Sidewalks: \$452,800 STP
October 2015 Amendments/Modifications:
Amendment: Added to TIP
· Biloxi - Pops Ferry Road. Submarine Cable. \$749,000 STP (Request made by MDOT)
November 2015 Amendments/Modifications:
· Move Moss Point Main Street sidewalks project from FY17 to FY18
· Move Jackson County Hwy 609 @ Old Fort Bayou from FY18 to FY19
· Move Pascagoula Hospital Road from FY17 & 18 to FY16 & 17
· Move Biloxi Pops Ferry Extension from FY19 to FY18
· Adjust D'Iberville Big Ridge Road project AC funding split
· Move Gulfport Courthouse Road project from FY17&18 to FY16&17
· Move Gautier Martin Bluff Road project from FY16 & 17 to FY17 &18
· Adjust Biloxi River Bridge AC funding split
· Move Jackson County Lemoyne Blvd @ Brittany Ave from FY16 to FY17
June 2016 Amendments and Modifications
· Add MDOT project: Bridge Group #107213-10100 (FY2016) I-10 Widening from Hwy 57 to the Alabama State Line. (Funding for preliminary engineering phase – total \$750,000 (\$600,000 Federal, \$150,000 State/Local))
· Increase Funds \$259,260 for Gulfport's Dedeaux Road project
· Increase Funds \$676,270 for Gulfport's Courthouse Road project
· Increase Funds \$1,208,133 for Gulfport's Landon Road project

· Remove Gautier Hwy 57 & Brown Road Signal Project at LPA request
· Remove D'Iberville Big Ridge and D'Iberville Blvd Project at LPA request
· Add Waveland, Nicholson Ave overlay and widening, \$800,000 STP
· Add Diamondhead, Golf Club Drive Roundabout, \$200,00 STP
· Add Diamondhead, I-10 interchange lighting, \$400,00 STP
· Add Long Beach, Pineville Road sidewalks, \$1,000,000 STP
· Add D'Iberville Popps Ferry Realignment, \$2,938,779 STP
· Add Jackson Co. Signal at Lemoyne and McCann, \$360,000 STP
· Add Jackson Co. Yellow Jacket Street sidewalks, \$160,000 TAP
· Add Gulfport Seaway Road Multiuse Pathway, \$788,304 TAP
· Add Bay-Waveland School District Pine street sidewalks, \$244,000 TAP

Coast Transit Authority (CTA) Amendment(s):

· Sec 5307 Preventive Maintenance Increase to total \$1,663,000 (federal \$1,330,400, local \$332,600)
· Sec 5307 JARC Purchased Transportation Increase to total \$380,000 (federal \$380,000, local \$0)
· Sec 5310 New Freedom Services Increase to total \$840,000 (federal \$672,000, local \$168,000)
· Sec 5307 Mobility Manager Increase to total \$75,000 (federal \$60,000, local \$15,000)
· Sec 5307 Gulfport Intermodal Hub Increase to total \$8,345,000 (federal \$6,676,000, local \$1,669,000)
· Add New Project: Sec 5339 Gulfport Hwy 90 Tram Bridge Project Total \$9,856,000 (federal \$7,884,800, local \$1,971,200)

September 2016 Amendments/Modifications:

· Lemoyne and Brittany (Jackson Co.) received additional funds and was moved to 2016
· Courthouse Road (Gulfport) received additional funds and was moved to 2016
· Dedeaux Road (Gulfport) received additional funds and was moved to 2016
· Main Street (Moss Point) sidewalks were moved into 2016
· Hospital Road (Pascagoula) was divided into two projects (Phase 1 in FY16, Phase 2 in FY17)

Febraury 2017 Amendments and Modifications

Amendments:

· Remove Bay St Louis, Old Spanish Trail lighting (\$640,640 STP)
· Remove Bay St Louis, Hwy 90 multiuse pathway (\$164,800 STP)
· Add Diamondhead, Aloha Dr widened shoulder (\$136,400 TAP)
· Add Diamondhead, Noma Dr multiuse pathway (\$430,400 TAP)
· Add Diamondhead, Golf Club Dr sidewalk extension (\$400,000 STP)
· Add Ocean Springs, Porter Ave bike/ped improvements (\$930,000 STP)
· Add Gulfport, Ship Island Ferry program upgrades (\$1,156,913 Earmark)
· Add Gulfport, Hwy 90 and 20 th Ave Improvements (\$507,169 STP)
· Funding Increase, Gulfport, Dedeaux Rd by \$1,573,635 STP in FY17
· Funding Increase, Gulfport, Courthouse Rd by \$623,598 STP in FY17

Coast Transit Authority (CTA) Amendment(s):
· CTA Funding Increase: Computer Equipment, Sec 5307 increase from \$16,000 to \$24,000
· CTA Additional Funds: Expand Gulfport Multimodal Hub, Sec 5307 \$8,878,408 FY18
· CTA Additional Funds: Gulfport/Hwy 90 Bike/Ped/Tram Bridge, Sec 5339 \$8,925,500 FY18
Modifications:
· Bay-Waveland School District, Pine Street moved FY17 to FY18
· Gulfport, Seaway Road moved from FY17 to FY18
· Gulfport, Airport Road moved FY17 to FY19
· Jackson Co, Lemoyne/McCann moved from FY17 to FY18
· Jackson Co, Hwy 609 & Old Fort Bayou moved from FY19 to FY20
· Jackson Co, St. Martin N Elementary moved from FY20 to FY18
· D'Iberville Boney/D'Iberville Blvd moved from FY17 to FY18
· D'Iberville Popp's Ferry Realignment advance construction over FY18 and FY19
· Biloxi Popp's Ferry Extension advance construction over FY18 and FY19
· Diamondhead, Golf Club Drive Roundabout moved from FY18 to FY17
· Waveland, Waveland Ave moved from FY19 to FY18
· Long Beach, Pineville Road moved from FY20 to FY17
May 2017 Amendments & Modifications
Amendments:
· Long Beach, Changed Pineville Road project termini from Alexander Road to Harper-McCann School
· Waveland, Changed Waveland Ave project termini from Dubuc Lane to the city park south of CSX RR tracks <i>City elected not to change termini</i>
· Gulfport, Add Ship Island Ferry Terminal Improvement Project, Earmark Funds \$1,156,913
Modifications:
· Pascagoula, Decrease Hospital Road Phase 2 FY17 STP/Non-urban funds by \$142,274, total is \$1,250,943
· Pascagoula, Increase Hospital Road Phase 1 FY16 STP/Non-urban funds by \$356,766, total is \$1,256,766
· Biloxi, move Popp's Ferry Extension from FY18/19 to FY19/20
· Gulfport, Add \$383,000 STP to Courthouse Road in FY17
· Hancock Co, Change Beach Access Study termini from Buccaneer State Park to Lakeshore Drive
· GRPC, Add STP group funds to Get To B safety projects, phase 2 development \$150,000
· GRPC, Add STP group funds to Get To B professional development safety series \$12,000
· Jackson Co, Add STP group funds to the Countywide Bike Plan Study, increase from \$80,000 to \$91,463
August 2017 Amendments & Modifications
Amendments:
· Removal of 3 Diamondhead projects from the TIP: Golf Cart Drive Sidewalks, Golf Cart Drive Roundabout & Noma Drive Multi-use Pathway
· Removal of Biloxi Sidewalk project on Reynoir and Jackson Streets
Modifications:
· Waveland, increase funds for FY17 Waveland Sidewalk Study from \$80,000 to \$82,641
· Biloxi, add the Biloxi Rail Corridor Study for \$150,000 FY18 STP-Study Group

· Pascagoula, Move Hospital Road Ph. 2 from FY17 to FY18
· Bay St Louis, Move Carrol Ave SRTS project from FY17 to FY18
· Diamondhead, Move I-10 lighting project to FY18 to align with MDOT reconstruction project
· Gautier, Remove Advance Construction for Martin Bluff Road, project in FY19
· D'Iberville, Remove Advance Construction for Popp's Ferry Realignment, project in FY20
· Long Beach, Termini Correction on Pineville Rd sidewalks from Royal Dr to Willow Creek Dr
· Biloxi, include TIP Page for Popp's Ferry Bridge replacement earmark funds (not programmed at this time)
December 2017 Amendments & Modifications
Amendments:
· Pascagoula, Increase Hospital Road Phase 1 funds by \$55,706, new total is \$1,312,472
· Pascagoula, Increase Hospital Road Phase 2 funds by \$293,852 and \$170,140 for RR costs, new total is \$1,714,935
Modifications:
· D'Iberville, Increase Boney Ave Signal STP allocation by \$73,500, new total is \$198,950
· Diamondhead, increase STP allocation for I-10 lighting project by \$48,485, new total is \$448,485
January 2018 Amendments & Modifications
Modifications:
· Gautier, Split project between FY19 & 20, adjust Non-Urban funds allocation to reflect available balances and shift remaining funding to STP-TMA as the funding source. All totals remain the same.
· GRPC Traffic Signal Prioritization Project funding increase from \$40,000 to \$50,000 in FY2018
· Jackson County, Shift the McCann Road Overpass Study from FY17 to FY18 to reflect actual obligation year
· Biloxi, Adjust ROW phase for Popp's Ferry Road Extension. Shift from FY17 to FY18 and update earmark funds with available federal balances. ROW costs exceeded available federal funds, city is covering balance so match will exceed the original 20% match requirement.
March 2018 Amendments & Modifications
Amendments:
· Biloxi, Increase funds for Popp's Ferry Submarine Cable by \$429,000. Increase from \$749,000 to \$1,178,000
Modifications:
· Diamondhead, Include a technical study on E. Aloha drive from Veterans to Kalani Drive in the FY18 study/projects group
· Pass Christian, include replacement of the Clark Ave. Bridge in the FY18 study/projects group
NOTE: at March 1 MPO-TPC meeting new TIP handbook policies were adopted which included a funding increase cap of 20%. This applies to project totals currently on the 2017-2020 TIP and original award totals of projects added to the TIP after March 1, 2018.
April 2018 Amendments & Modifications
Modification:
· Diamondhead, Increase funds for Interchange lighting project by \$89,697 STBG. Increase from \$448,485 to \$538,182 which maxes out their 20% increase capacity for this project.

· Jackson County, Move St. Martin N. Elementary sidewalk project from FY18 to FY19
· Pass Christian, Move Clark Street birdge replacement project from FY18 to FY19
August 2018 Amendments & Modifications
Amendments:
· Gulfport, Landon Road add \$751,867 STBG. Increase from \$2,208,133 to \$2,960,000 STBG
· Bay-Waveland School District, remove Pine St. sidewalk project from the TIP
· Gulfport, Add Dedeaux Rd (Ph. 2) Hwy 605 to Jessica Ln. to TIP Illustrative List \$3,760,000
· Bay St Louis, Add Beyer Dr. sidewalks from Carrol Ave. to Ranch St. in FY19, \$280,000 TAP
· Diamondhead, Add Montjoy Creek pathway from Diamondhead Drive to Rotten Bayou in FY 19, \$80,000 TAP
· Hancock Co., Add Washington St. Accessibility around S. Beach Blvd to FY19, \$240,000 TAP
· USM-Gulf Park, Add Gulf Park Dr. sidewalk from Bear Point to north of Hardy Hall in FY19, \$231,400 TAP
· Gulfport, Add Old Hwy 49 sidewalk from Oak Ln. to Robinson Rd. in FY20, \$160,000 TAP
· Gulfport, Add multiple school zone improvement projects to FY20, \$210,278 STBG
· Biloxi, Add Main St. and CSX rail line crossing to FY20, \$150,000 STBG
· Ocean Springs, Add East Beach Dr. from Holcomb Blvd. to Halstead Rd. to FY20, \$384,000 STBG (BPT)
· Bay St Louis, Add Washington St. sidewalks from Old Spanish Trl. To St. Francis St. in FY20, \$120,000 STBG (BPT)
· Ocean Springs, Add Ocean Springs Rd. from US 90 to Culeoka Dr. to FY21, \$2,258,400 STBG
· Moss Point, Add Jefferson St. sidewalks to include portion on Main St to 2nd St. to FY21, \$412,000 Non-urban STBG
· Harrison Co, Add Landon Rd. reconstruction from Coleman Rd. to 34th St. to FY21, \$1,360,000 STBG
· Long Beach, Add Pinvile sidewalks ph. II from Harper MCCaughan to klondyke Rd. to FY21, \$400,000 STBG (BPT)
· Long Beach, Add Klondyke and Commission Rd. intersection to FY22, \$760,000 STBG
· Biloxi, Add Woolmarket Rd. sidewalks from Airport Rd. to Lorraine Rd. in FY22, \$880,000 TAP
· Moss Point, Add Macphelah Rd. and Jefferson St. intersection to FY22, \$509,000 Non-urban STBG
· Waveland, Change termini on Nicholson Ave. from Beach Blvd. to Jeff Davis Ave.
Modifications:
· Gulfport, Seaway Road add \$157,660 TAP funds. Increase from \$788,304 to \$945,964. Change source From TAP to STBG.
· Gulfport, Seaway Road move from FY18 to FY19
· Gulfport, 20th Ave. move from FY18 to FY19
· Diamondhead, E. Aloha Dr. move from FY18 to FY19
· Biloxi, Popp's Ferry Extension. Move from FY 19 to FY22.
· Gulfport, Airport Rd. Move project to the Illustrative List
· Biloxi, move Popp's Ferry bridge replacement to TIP Illustrative List, no MPO funds
· D'Iberville, move Popp's Ferry Rd. from D'Iberville Blvd. to Belle St. to TIP Illustrative List \$2,938,780