



**FY 2019-2022**  
**Mississippi Gulf Coast**  
**Metropolitan Planning Organization**  
**Transportation Improvement Program**



**NON-DISCRIMINATION NOTIFICATION:**

GRPC prohibits discrimination in all of its programs, services and activities. Public participation is solicited without regard to race, color, national origin, age, sex, religion, disability, or other protected status. Persons who require assistance under the Americans with Disabilities Act should contact the MPO at least five (5) business days prior to the any scheduled meeting, event or the end of a public review and comment period. Contact Stephanie Plancich at 228-864-1167 or by email to [contactus@grpc.com](mailto:contactus@grpc.com) with any requests, questions or comments.

**NOTATION OF FINANCIAL ASSISTANCE:**

This document was prepared and published by Gulf Regional Planning Commission, the Mississippi Gulf Coast Metropolitan Planning Organization (MPO), in cooperation with or with financial assistance from the United States Department of Transportation (USDOT), the Federal Transit Administration (FTA), the Federal Highway Administration (FHWA) and the Mississippi Department of Transportation (MDOT). Assistance notwithstanding, the contents of this document do not necessarily reflect the official view or policies of the funding agencies.

**NOTICE OF PUBLIC REVIEW:**

In compliance with federal regulation 23 CFR 450 and the FTA public participation requirements of the Section 5307 POP notice, the Mississippi Gulf Coast Metropolitan Planning Organization (MPO) sought public input from 7/1/18 through 8/15/2018 prior to the TPC reviewing the FY19-22 Transportation Improvement Program (TIP) for adoption on August 23, 2018. The public participation summary is included in the Appendix of this document.

## THE GULF COAST MPO

The Metropolitan Planning Organization (MPO) is a federally mandated planning body responsible for coordinating transportation programs in US Census designated urbanized areas. The Gulf Regional Planning Commission (GRPC) serves as the MPO for the Mississippi Gulf Coast and is the lead agency responsible for developing and administering plans and activities required to maintain eligibility and receive federal funds for the transportation systems in Hancock, Harrison and Jackson counties. The primary mission of the MPO is to develop and maintain a transportation planning process that is compliant with federal and state requirements and supports the development and enhancement of sustainable multimodal facilities, programs and systems in the Mississippi Gulf Coast area. The Transportation Improvement Program (TIP) is one of the most important products of the MPO's planning process.

## THE TIP

The Transportation Improvement Program (TIP) is a financially constrained program developed through an on-going planning process for addressing short-term transportation priorities that are consistent with the MS Gulf Coast's Metropolitan Transportation Plan (MTP), the long-range transportation plan for our region. The TIP is developed and approved by the MPO and is included, without modification, in the Statewide Transportation Improvement Program (STIP) following approval by the Governor. The TIP can be amended by approval of the MPO policy committee. The Gulf Coast MPO allocates Surface Transportation Block Grant (STBG) and Transportation Alternative Program (TAP) funds through TIP policies and processes described in the MPO's *TIP Handbook* and *Public Participation Plan*.

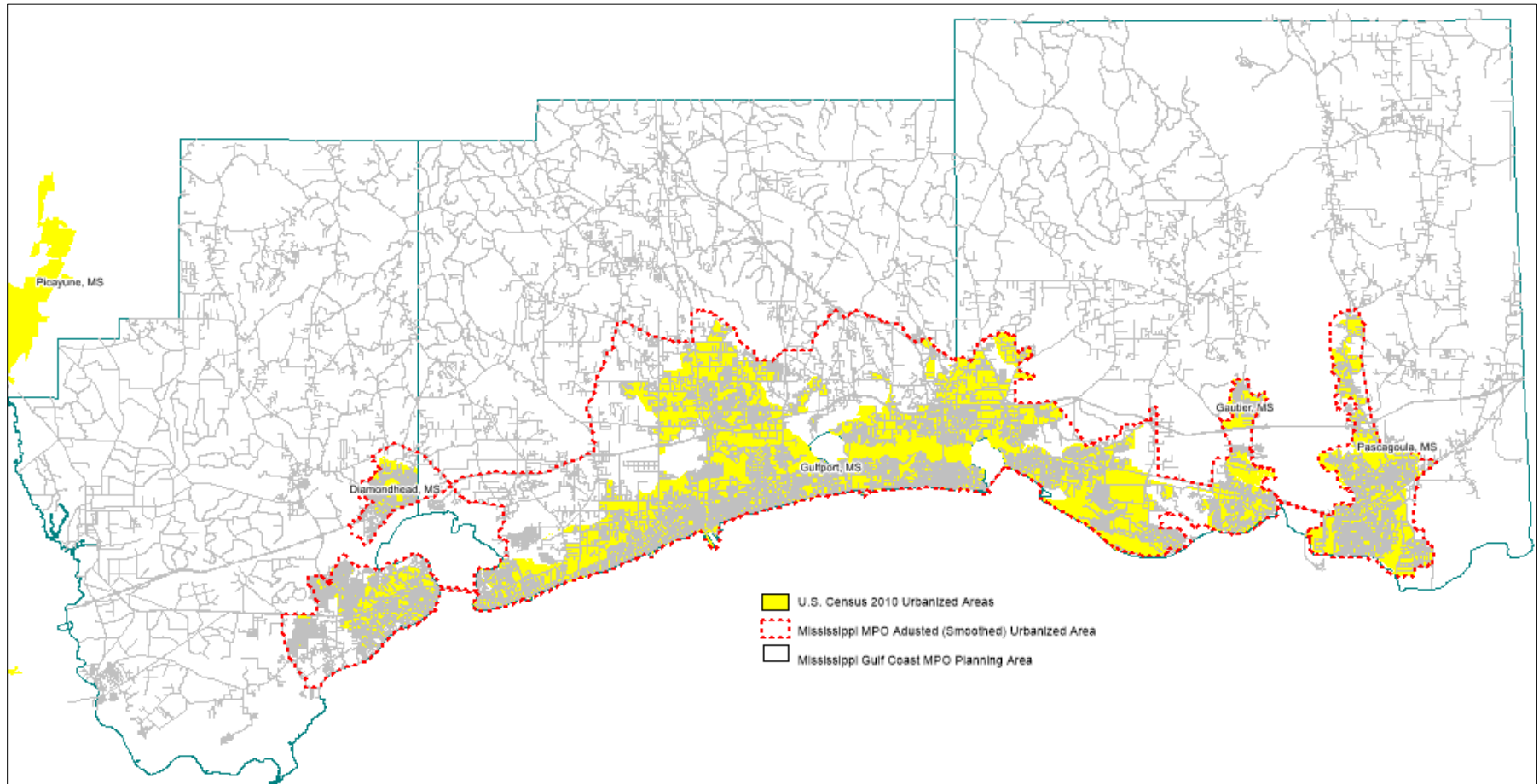
The Gulf Coast TIP identifies timing and funding of all federally funded transportation projects scheduled for implementation in the three coastal counties over a four-year period. The TIP identifies funding amounts, source of funds, project sponsor, type of project and year of funding for each project. All projects in the TIP must be consistent with goals and projects identified in the area's Metropolitan Transportation Plan. The TIP development process allows for public involvement at various points including public meetings where proposed projects are presented and discussed. Specific polices for public review are included in the MPO's *Public Participation Plan*.

The TIP development process occurs every two years, however the MPO provides opportunities to revise the projects in the TIP. Two types of changes include "amendment" and "administrative modification" depending on the level of change being made to the project. An amendment is a revision being made to the scope, termini, removal of a project or addition of a project. A modification is considered a minor revision to the TIP or STIP including the MS Gulf Coast MPO 20% maximum cost increase to a project. Specific polices for TIP changes are included in the MPO's *TIP Handbook*.

## GULF COAST PLANNING AREA

The Mississippi Gulf Coast Planning Area encompasses three counties in which are located 12 municipalities: Waveland, Bay St. Louis and Diamondhead in Hancock County; Pass Christian, Long Beach, Gulfport, Biloxi and D’Iberville in Harrison County; and Ocean Springs, Gautier, Pascagoula and Moss Point in Jackson County. There are two distinct urbanized areas within the planning area: the Gulfport Urbanized Area (UZA) which stretches from Bay Saint Louis to Ocean Springs and includes portions of all three coastal counties; and the Pascagoula UZA located in the eastern half of Jackson County.

Figure 1: MS Gulf Coast TIP coverage area



## NATIONAL GOAL AND EMPHSIS AREAS

The TIP development process reflects the priorities and direction of the region guided by MPO Planning Factors. The MPO considers projects that will address the planning factors presented in Table 1 below.

**Table 1: Planning Factors**

- Economic Vitality - Support the economic vitality of the metropolitan area, especially by enabling global competitiveness, productivity, and efficiency
- Safety - Increase the safety of the transportation system for motorized and non-motorized users
- Security - Increase the security of the transportation system for motorized and non-motorized users
- Mobility & Accessibility - Increase the accessibility and mobility of people and for freight
- Environment - Protect and enhance the environment, promote energy conservation, improve the quality of life, and promote consistency between transportation improvements and State and local planned growth and economic development patterns
- Multimodal Connectivity - Enhance the integration and connectivity of the transportation system, across and between modes, for people and freight
- Operations - Promote efficient system management and operation
- Preservation - Emphasize the preservation of the existing transportation system
- Reliability & Resiliency - Improving transportation system resiliency and reliability
- Storm water - Reducing (or mitigating) the stormwater impacts of surface transportation
- Tourism - Enhancing travel and tourism

## TIP INVESTMENT STRATEGY

The MPO uses “Groups” to influence how federal transportation funds are spent through earmarking a portion of these funds to support specific regional priorities, national goals and performance targets. This strategy enables the MPO to encourage the use of STP funds for smaller, quicker-implementation projects. It also encourages investment in priority focus areas but also controls the amount of funding used in an area. The Groups enable the MPO to expedite project delivery and being more responsive to needs by not requiring a TIP amendment for each project. The MS Gulf Coast MPO groups include: Safety Group, Bicycle-Pedestrian-Transit Group, MPO Studies/Projects Group and Bridge Projects Group.

## TIP PROJECT EVALUATION AND PRIORITIZATION

Given the fiscal realities of today and tomorrow with demands for budget reductions at all levels of national, state, and local government, decisions on where and how to spend the Mississippi Gulf Coast MPO’s allocation of STBG transportation funds should

not be taken lightly. To ensure that the most beneficial projects are implemented, a project prioritization process is used. The criteria used are based on federal goals, emphasis areas and performance measures for the MPO. Projects are evaluated by MPO staff and prioritized as needed to achieve performance targets and link investment decisions to goals.

## PERFORMANCE MANAGEMENT

In 2012, the transportation MAP-21 was developed with the intent of creating a streamlined, performance-based, multimodal program. MAP-21 increased the accountability and transparency of Federal highway programs by improving transportation investment decision-making through performance-based planning and programming. Performance measurement provides the MPO with a better ability to identify and mitigate issues with their respective transportation networks. The 2015 FAST Act continues MAP-21's overall performance approach and ensures that State DOT's and MPO's invest in projects that collectively make progress toward the National Goals that were established by Congress.

**Table 2: Performance Goals**

- Safety - To achieve a significant reduction in traffic fatalities and serious injuries on all public roads
- Infrastructure condition - To maintain the highway infrastructure asset system in a state of good repair
- Congestion reduction - To achieve a significant reduction in congestion on the National Highway System
- System reliability - To improve the efficiency of the surface transportation system
- Freight movement and economic vitality - To improve the national freight network, strengthen the ability of rural communities to access national and international trade markets, and support regional economic development
- Environmental sustainability - To enhance the performance of the transportation system while protecting and enhancing the natural environment
- Reduced project delivery delays - To reduce project costs, promote jobs and the economy, and expedite the movement of people and goods by accelerating project completion through eliminating delays in the project development and delivery process, including reducing regulatory burdens and improving agencies' work practices

The MPO, MDOT and CTA cooperatively develop and sharing information related to transportation performance data, the selection of performance targets, the reporting of performance targets, the reporting of performance to be used in tracking progress toward attainment of critical outcomes for the region of the MPO. The MPO will support CTA's State of Good Repair targets by programming capital improvement transit projects in the MTP and TIP. The MPO collaborates with MDOT on Safety, pavement and bridge, system performance and freight performance by reviewing STIP and TIP project to assess their impacts and identifying projects from MPO planning to support the measures.

This TIP was developed in consideration of the established performance measures and targets. As required under current the most recent transportation act, the Gulf Coast MPO will establish performance targets, and track progress towards target achievement, for the following performance measures except as noted:

**Table 3: Performance Measures**

<u>Safety</u>
<ul style="list-style-type: none"> <li>• Total number of traffic related fatalities on all public roads.</li> <li>• Rate of traffic related fatalities on all public roads per 100 million VMT.</li> <li>• Total number of traffic related serious injuries on all public roads.</li> <li>• Rate of traffic related serious injuries on all public roads per 100 million VMT.</li> <li>• Total number of non-motorized fatalities and serious injuries on all public roads.</li> </ul>
<u>Pavement Condition</u>
<ul style="list-style-type: none"> <li>• Percentage of pavements on the Interstate System in Good condition.</li> <li>• Percentage of pavements on the Interstate System in Poor condition.</li> <li>• Percentage of the non-interstate National Highway System in Good condition.</li> <li>• Percentage of the non-interstate National Highway System in Poor condition.</li> </ul>
<u>Bridge Condition</u>
<ul style="list-style-type: none"> <li>• Percentage of National Highway System bridges classified as in Good condition.</li> <li>• Percentage of National Highway System bridges classified as in Poor condition.</li> </ul>

<u>NHS Travel Time Reliability</u>
<ul style="list-style-type: none"> <li>• Percent of the Person-Miles Traveled on the Interstate that are reliable.</li> <li>• Percent of the Person Miles Traveled on the Non-Interstate National Highway System that are reliable.</li> </ul>
<u>Freight Reliability</u>
<ul style="list-style-type: none"> <li>• Percentage of Interstate System mileage providing reliable truck travel time.</li> </ul>
<u>Traffic Congestion</u>
<ul style="list-style-type: none"> <li>• Annual hours of peak hour excessive delay per capita. *</li> <li>• Percentage of Non-Single Occupancy Vehicle Travel. *</li> </ul>
<u>Total Emissions Reduction</u>
<ul style="list-style-type: none"> <li>• Total emissions reductions by applicable pollutants under the CMAQ program. *</li> </ul>
<u>Transit State of Good Repair</u>
<ul style="list-style-type: none"> <li>• Equipment</li> <li>• Rolling Stock</li> <li>• Infrastructure</li> <li>• Facilities</li> </ul>
<p><i>*not required for Gulf Coast MPO</i></p>

## LINKING THE TIP

The MPO will continue to coordinate with MDOT and other stakeholders through the development of the TIP to support regional goals, objectives, and targets, to the maximum extent practicable. The Gulf Coast MPO recognizes the importance of linking its investment priorities with national goals. The Gulf Coast TIP investment strategy and project evaluation and prioritization processes are used to help achieve performance targets for each goal. The table below shows how MPO uses the TIP to advance national goals and planning emphasis areas and performance measures set by Federal Highway Administration (FHWA):

MAP-21 National Goal	FAST Act National Planning Emphasis Area	TIP Investment Strategy	TIP Project Evaluation and Prioritization Criteria	Performance Measures
Infrastructure Condition	Emphasize the preservation of the existing transportation system	<ul style="list-style-type: none"> <li>• Multimodal Program</li> <li>• Bridge Group</li> </ul>	<ul style="list-style-type: none"> <li>• Traffic operations improvement projects</li> </ul>	<b>Pavement Condition.</b> Percentage (%) of pavements of the Interstate System in Good Condition
				<b>Pavement Condition.</b> Percentage (%) of pavements of the Interstate System in Poor Condition
				<b>Pavement Condition.</b> Percentage (%) of pavements of the Non-Interstate NHS in Good Condition
				<b>Pavement Condition.</b> Percentage (%) of pavements of the Non-Interstate NHS in Poor Condition
				<b>Bridge Condition.</b> Percentage (%) of NHS bridges classified as in Good Condition
				<b>Bridge Condition</b> Percentage (%) of NHS bridges classified as in Poor Condition
Safety	<p>Increase the safety of the transportation system for motorized and non-motorized users</p> <p>Increase the security of the transportation system for motorized and non-motorized users</p>	<ul style="list-style-type: none"> <li>• Multimodal Program</li> <li>• Safety Group</li> <li>• Bike-Ped-Transit Group</li> </ul>	<ul style="list-style-type: none"> <li>• Project crash rate</li> <li>• Project slows traffic on roads with excessive speeds</li> <li>• Project's use of bicycle and pedestrian measures</li> </ul>	<b>Safety.</b> Number of Fatalities on all public roads
				<b>Safety.</b> Rate of Fatalities per 100 Million Vehicle Miles Traveled
				<b>Safety.</b> Number of Serious Injuries on all public roads
				<b>Safety.</b> Rate of Serious Injuries per 100 Million VMT
				<b>Safety.</b> Number of Non-motorized Fatalities and Serious Injuries on all public roads
Congestion Reduction	Promote efficient system management and operation	Multimodal Program	<ul style="list-style-type: none"> <li>• Project addresses congestion identified in the CMP or MTP</li> </ul>	<b>Traffic Congestion.</b> Annual Hours of Peak Hour Excessive Delay Per Capita*
				<b>Traffic Congestion.</b> Percentage (%) of Non-Single Occupancy Vehicle Travel*



MAP-21 National Goal	FAST Act National Planning Emphasis Area	TIP Investment Strategy	TIP Project Evaluation and Prioritization Criteria	Performance Measures
Environmental Sustainability	Improve resiliency and reliability of the transportation system and reduce or mitigate storm water impacts of surface transportation	<ul style="list-style-type: none"> <li>Multimodal Program</li> </ul>	<ul style="list-style-type: none"> <li>Project mitigates reoccurring storm water issues</li> <li>Project negatively or positively impacts underserved communities</li> <li>Project serves an essential service</li> <li>Project is a priority of the CAC</li> <li>Public review process provided significant comment</li> </ul>	<b>Total Emission Reductions*</b>
	Protect and enhance the environment, promote energy, conservation, improve quality of life, and promote consistency between transportation improvements and State and local planned growth and economic development patterns			
	Increase the accessibility and mobility of people and for freight			
Economic Vitality/Freight Movement	Support the economic vitality of the metropolitan area, especially by enabling global competitiveness, productivity, and efficiency	<ul style="list-style-type: none"> <li>Multimodal Program</li> </ul>	<ul style="list-style-type: none"> <li>Project generates new economic development</li> <li>Project services a land use, local corridor or mobility corridor</li> <li>High truck traffic roadway</li> <li>Transit corridor</li> <li>Demand management project</li> </ul>	<b>Freight Reliability.</b> Percentage of interstate system providing reliable truck travel time. Truck Travel Time Reliability Index (TTTR)
	Increase the accessibility and mobility of people and for freight			
System Reliability		<ul style="list-style-type: none"> <li>Multimodal Program</li> </ul>		<b>Travel Time Reliability.</b> Percent (%) of the Person-Miles Traveled on the Interstate that are reliable - Level of Travel Time Reliability (LOTTR)
				<b>Travel Time Reliability.</b> Percent (%) of the Person Miles Traveled on the Non-Interstate NHS that are reliable - Level of Travel Time Reliability (LOTTR)
Reduced Project Delivery Delays		<ul style="list-style-type: none"> <li>Studies/projects</li> </ul>	<ul style="list-style-type: none"> <li>Amount of ROW</li> <li>Categorical Exclusion</li> <li>Preliminary engineering done</li> <li>Technical study done</li> </ul>	

\*Not required for Mississippi Gulf Coast MPO

## FISCAL CONSTRAINT

Federal regulations require that financial constraint of the Transportation Improvement Program (TIP) be demonstrated and maintained by year and shall include sufficient financial information to determine which projects are to be implemented using current and/or reasonably available revenues. The MPO will use the figures below to develop their fiscal constraint for the STBG and TAP funds for the planning area.

	2019	2020	2021	2022
TMA STBG	\$5,153,522	\$5,256,593	\$5,361,725	\$5,468,959
Non-Urban STBG	\$778,331	\$778,331	\$778,331	\$778,331
TAP	\$346,352	\$353,279	\$360,345	\$367,552

Congress passes a new *Transportation Bill* approximately every four to six years, the latest of which is entitled the *Fixing America's Surface Transportation Act (FAST)*. The Transportation Bill authorizes to each state a certain amount for each funding category (STBG, TAP, etc.) for the federal fiscal years it covers. These authorizations are based on the funds expected to be available in the Highway Trust Fund. Congress then passes an *Appropriation Bill* near the beginning of each year that establishes the exact amounts that the states can actually spend in their highway program. The appropriation bill establishes a certain percentage of the total authorization for the states, which is referred to as an *Obligation Limitation*. MDOT suballocates STBG funds to its urbanized areas with over 200,000 in population (Gulfport, UZA) and must make obligation limitation available based on the criteria set forth in 23 U.S.C. 133(e). MDOT makes available 100% of the Gulfport UZA suballocation obligation limitation for each fiscal year to actually spend.

## ILLUSTRATIVE PROJECT LIST

Per CFR 450.326, an "Illustrative Project List" will be used for illustrative purposes, to include additional projects that would be included in the TIP if reasonable additional resources beyond those identified in the financial plan were to become available. Projects moved between the financial plan and this list will be performed using administrative modification procedures.

## TRANSIT PROGRAM OF PROJECTS

The Program of Projects (POP) reflects the Gulf Coast's federally supported transit projects over the next four fiscal years. The POP is consistent with the Metropolitan Transportation Plan (MTP) which implements regionally significant transit projects. The TIP lists each of FTA programs, the program funding sub-allocations, the government funding participation all which is identified by an ARC identification number. Notice for review of the POP is conducted by the MPO simultaneously with amendments and updates to the TIP. Public notice given is as follows: "*Also listed in this document is Coast Transit Authority's Program of Projects that are funded by the Federal Transit Administration. The public meetings/comment period will satisfy the public participation requirements for the FTA Section 5307 and 5309 POP notice. The proposed CTA Program of projects will be final unless revised as a result of public comment.*"

## **PUBLIC REVIEW**

The public review period for the FY19-22 Transportation Improvement Program (TIP) was held from July 1- August 15, 2018. Six open-house style public meetings were held across the Mississippi Gulf Coast's three coastal counties.

Dates and locations Included:

- 8/6, 11am-1pm, Jackson County's Pascagoula Office in conjunction with the Board of Supervisors meeting
- 8/7, 4-6pm, Moss point City Hall in conjunction with the Board of Alderman meeting
- 8/8, 11:30am-1:30pm, Waveland City Hall, no meeting coordination outside utilities office
- 8/8, 4-6pm, Ocean Springs Walmart joined by CTA and MDOT staff, State meeting on the Coast
- 8/9, 11:30am-1:30pm, Biloxi Transit Center at mid-day transfer times with CTA staff
- 8/11, 4-6pm, Bay St Louis 2nd Saturday festival, table set up near Main St and Beach Blvd

Total participants who signed in: 179. There were others who stopped & talked with staff, but didn't want to sign in.

In addition to making TIP information available and discussing proposed investments, MPO staff collected demographic information on participants and conducted a public opinion survey during each event. The survey proved to be an effective strategy to engage with the public, there was also a significant amount of positive feedback on its interactive style. This research tool, originally created in support of the 2040 long-range plan, has been adjusted based on evaluation of those public participation efforts and will be conducted now through FY2019 to provide data on community investment priorities for incorporation into the 2045 MTP and future TIP development processes.

This meeting process took advantage of several best practice strategies. Most notably, "go where the people are" instead of expecting them to come to us. Based on the results of this strategy, MPO staff will continue to seek opportunities to engage with members of the public at locations they already frequent, instead of hosting stand-alone meetings. Not only did we receive valuable feedback from the community, but it helped attract them into the meeting space where they were exposed to planning efforts taking place which sparked greater discussion of transportation related needs, wants and concerns. Overall, the survey helped draw community members into the regional planning discussion. The agency website, [www.grpc.com](http://www.grpc.com) was used as an information platform by posting all information on the TIP development process including the TIP Handbook and application materials for local public agencies. Also provided was a copy of the review period legal notice and meeting information for all TIP open-houses. Interested people could also access the survey and/or submit comments directly to MPO staff through online links posted on the website. Eight comments were received in-person and one email all supporting the proposed TIP projects.

Evanescence Radio | Gulf Regional Planning Commission

www.grpc.com

POINT SIZE: A A A | Select Language

Gulf Regional Planning Commission

Home About GRPC GRPC Planning MPO Programs Maps & Downloads Public Information

**VIEW & DOWNLOAD DRAFT**

**FY 2019-2022**

**TIP REVIEW PERIOD NOW UNDERWAY**

**JULY 1 - AUGUST 15, 2018**

**Our Programs**

- Program & Project Map
- MPO Planning Documents
- Live Traffic Cams
- Traffic Count Program
- Apartment Survey
- Get To B Safety
- Plan for Opportunity
- Community Exchange
- CEA
- MPO

Type here to search

9:32 AM 7/2/2018

Evanescence Radio | TIP FY 2019-2022 | Gulf Regional Planning Commission

www.grpc.com/tip-fy-2019-2022/

POINT SIZE: A A A | Select Language

Gulf Regional Planning Commission

Home About GRPC GRPC Planning MPO Programs Maps & Downloads Public Information

**TIP FY 2019-2022**

**FY 2019-2022 TIP (DRAFT)** **SUBMIT COMMENTS / QUESTIONS**

In accordance with 23 CFR 450, Gulf Regional Planning Commission, the Mississippi Gulf Coast MPO, is making available the FY2019-2022 Transportation Improvement Program (TIP) for public review and comment beginning July 1, 2018. The TIP is a four-year listing of planned transportation investment across our 3-county region.

Scheduled public meetings include:

- Monday, August 6, 11:00-1:00**  
Jackson Co. Administration Bldg, 2955 Centy St, Pascagoula
- Tuesday, August 7, 4:00-6:00**  
Miss Point City Hall, 4300 Meiners Ave, Moss Point
- Wednesday, August 8, 11:30-1:30**  
Waveband City Hall, 301 Coleman Ave, Waveband
- Wednesday, August 8, 4:00-6:00**  
Walnut Super Center, 3915 Bienville Blvd, Ocean Springs
- Thursday, August 9, 11:30-1:30**  
CTA Transit Center, 190 Reynolds St, Biloxi
- Saturday, August 11, 4:00-6:00**  
2nd Saturday Festival, Beach Blvd & Main St, Bay St Louis

The 45-day public review and comment period is set for July 1st to August 15th, 2018 which satisfies both FHWA and FTA public notice requirements. We encourage interested parties to review the draft materials and provide feedback. Copies can be downloaded at [www.grpc.com](http://www.grpc.com), picked up or requested from 1835-G Poppo Ferry Rd, Biloxi MS 39532 or requested by email from [contactus@grpc.com](mailto:contactus@grpc.com)

GRPC prohibits discrimination in all of its programs, services, and activities. Public participation is solicited without regard to race, color, national origin, age, sex, religion, disability, or other protected status. Persons who require assistance under the Americans with Disabilities Act should contact the MPO at 228-864-1167 or [contactus@grpc.com](mailto:contactus@grpc.com) at least five (5) business days prior to the end of this public comment period.

Site Map | Print page | Office Email | © 2008 - 2018 Gulf Regional Planning Commission

Type here to search

9:41 AM 7/2/2018

# SunHerald

## AFFIDAVIT OF PUBLICATION

Account #	Ad Number	Identification	PO	Amount	Cols	Depth
682354	0003783254	LEGAL NOTICE MS Gulf Coast Transportation Itr		\$40.88	1	6.30 in

**Attention:**

GULF REGIONAL PLANNING  
COMMISSION; ATTN: S PLANCICH  
1635 POPPS FERRY ROAD, SUITE G  
BILOXI, MS 39532

LEGAL NOTICE  
MS Gulf Coast Transportation Improvement Program (TIP)  
In accordance with 23 CFR 450, Gulf Regional Planning Commission; the Mississippi Gulf Coast MPO, is making available the FY2019-2022 Transportation improvement Program (TIP) for public review and comment beginning July 1, 2018. The TIP is a four-year listing of planned transportation investment across our 3-county region. Scheduled public meetings include:  
Monday, August 6, 11:00-1:00  
Jackson Co. Administration Bldg., 2915 Cany St, Pascagoula  
Tuesday, August 7, 4:00-6:00  
Moss Point City Hall, 4320 McInnis Ave, Moss Point  
Wednesday, August 8, 11:30-1:30  
Waveland City Hall, 301 Coleman Ave, Waveland  
Wednesday, August 8, 4:00-6:00  
Walmart Super Center, 3911 Bienville Blvd, Ocean Springs  
Thursday, August 9, 11:30-1:30  
CTA Transit Center, 190 Reynoir St, Biloxi  
Saturday, August 11, 4:00-6:00  
2nd Saturday Festival, Beach Blvd & Main St, Bay St Louis  
The 45-day public review and comment period is set for July 1st to August 15th, 2018 which satisfies FHWA public notice requirements. Also listed in this document is Coast Transit Authority's Program of Projects that are funded by the Federal Transit Administration. The public meetings/comment period will satisfy the public participation requirements for the FTA Section 5307 POP notice. The proposed MPO & CTA Program of Projects will be final unless revised as a result of public comment. We encourage interested parties to review the draft materials and provide feedback. Copies can be downloaded at [www.grpc.com](http://www.grpc.com), picked up or requested from 1635-G Popps Ferry Rd, Biloxi MS 39532, or requested by email from [contact@grpc.com](mailto:contact@grpc.com). GRPC prohibits discrimination in all of its programs, services and activities. Public participation is solicited without regard to race, color, national origin, age, sex, religion, disability, or other protected status. Persons who require assistance under the Americans with Disabilities Act should contact the MPO at 228-864-1167 or [contact@grpc.com](mailto:contact@grpc.com) at least five (5) business days prior to the end of this public comment period. ADV 28,4,11 0003783254



**STATE OF MISSISSIPPI  
COUNTY OF HARRISON**

Before me, the undersigned Notary of Harrison County, Mississippi personally appeared CLAUDIA HENRY, who, being by me first duly sworn, did depose and say that she is a clerk of The Sun Herald, a daily newspaper published in the city of Gulfport, in Harrison County, Mississippi and the publication of the notice, a copy of which is hereto attached, has been made in said paper in the issue(s) of:

1 Insertion(s)

Published On:  
July 28, 2018

Affidavit further states on oath that said newspaper has been established and published continuously in said county for a period of more than twelve months next prior to the first publication of said notice.

*Deborah Ladner*  
Clerk

Sworn to and subscribed before me this  
2nd day of August in the year of 2018

*Deborah Ladner*  
Notary Public

\* The Sun Herald has been deemed eligible for publishing legal notices in Jackson County to meet the requirements of Miss. Code 1972 Section 13-3-31 and 13-3-32.



## Mississippi Gulf Coast TIP: Estimated Funding for FY2019-2022

FY2019 Estimate	Funding Source	Carryover	Federal	Local	Total
	TMA	\$5,747,104	\$3,652,473	\$2,349,894	\$11,749,471
	Non Urban	\$357,745	\$778,331	\$284,019	\$1,420,095
	TAP Projects	\$683,169	\$346,352	\$257,380	\$1,286,901
	Get To B Safety Group	\$0	\$500,000	\$0	\$500,000
	Bicycle/ Pedestrian/Transit Group	\$500,000	\$500,000	\$250,000	\$1,250,000
	Studies/Projects Group	\$206,000	\$400,000	\$151,500	\$757,500
	Funding Source	Carryover	Federal	Local	Total
FY2020 Estimate	TMA		\$3,856,593	\$964,148	\$4,820,741
	Non Urban		\$778,331	\$194,583	\$972,914
	TAP Projects		\$353,279	\$88,320	\$441,599
	Get To B Safety Group		\$500,000	\$0	\$500,000
	Bicycle/ Pedestrian/Transit Group		\$500,000	\$125,000	\$625,000
	Studies/Projects Group		\$400,000	\$100,000	\$500,000
	Funding Source	Carryover	Federal	Local	Total
FY2021 Estimate	TMA		\$3,661,725	\$915,431	\$4,577,156
	Non Urban		\$778,331	\$194,583	\$972,914
	TAP Projects		\$360,345	\$90,086	\$450,431
	Get To B Safety Group		\$500,000	\$0	\$500,000
	Bicycle/ Pedestrian/Transit Group		\$500,000	\$125,000	\$625,000
	Studies/Projects Group		\$400,000	\$100,000	\$500,000
	Bridge Group		\$300,000	\$75,000	\$375,000
	Funding Source	Carryover	Federal	Local	Total
FY2022 Estimate	TMA		\$3,768,959	\$942,240	\$4,711,199
	Non Urban		\$778,331	\$194,583	\$972,914
	TAP Projects		\$367,552	\$91,888	\$459,440
	Get To B Safety Group		\$500,000	\$0	\$500,000
	Bicycle/ Pedestrian/Transit Group		\$500,000	\$125,000	\$625,000
	Studies/Projects Group		\$400,000	\$100,000	\$500,000
	Bridge Group		\$300,000	\$75,000	\$375,000
	Funding Source	Carryover	Federal	Local	Total

NOTE: Funding estimates are based on the reasonable expectation of continued funding for all federally supported programs.











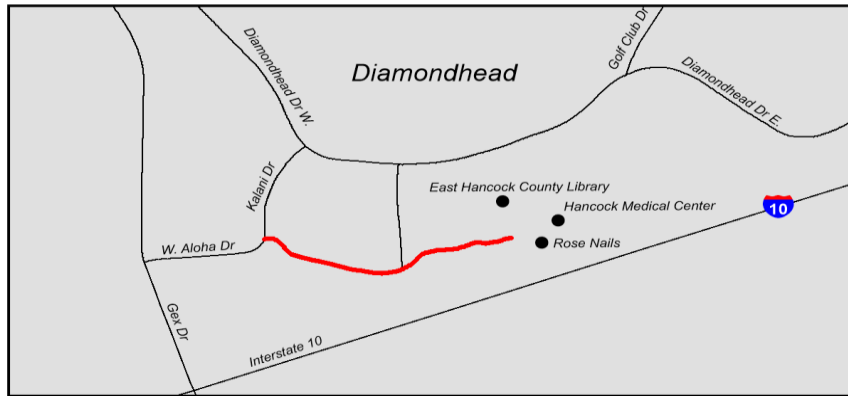


# Mississippi Gulf Coast Metropolitan Planning Organization

## FY2019-2022 Transportation Improvement Program (TIP)



<b>County</b>	Hancock	<b>Agency</b>	Diamondhead	<b>Project #</b>	107584
<b>Improvement Type</b>	Reconstruction	<b>Route</b>	E. Aloha Dr.		
<b>Project Termini</b>	Veterans Dr. to Medical Park (.21 mile)				
<b>Project Description</b>	As part of the City's widening project, add a multiuse pathway on southside of roadway				



### Project Notes

Action	Add to TIP	Date	2/23/2017	Type	Amend
Remarks	\$136,400 TAP				
Action	Change Year	Date	8/23/2018	Type	Mod
Remarks	Move from FY18 to FY19				
Action		Date		Type	
Remarks					
Action		Date		Type	
Remarks					
Action		Date		Type	
Remarks					
Action		Date		Type	
Remarks					
Action		Date		Type	
Remarks					

Funding Information					
FY	Source	Phase	Federal	Match	Total
2019	TAP	CON	\$136,400	\$34,100	\$170,500
<b>Project Totals</b>			<b>\$136,400</b>	<b>\$34,100</b>	<b>\$170,500</b>











# Mississippi Gulf Coast Metropolitan Planning Organization

## FY2019-2022 Transportation Improvement Program (TIP)



<b>County</b>	Harrison	<b>Agency</b>	USM- Gulf Park	<b>Project #</b>	
<b>Improvement Type</b>	Bicycle/Pedestrian	<b>Route</b>	Gulf Park Dr.		
<b>Project Termini</b>	Bear Point to north of Hardy Hall				
<b>Project Description</b>	Add a new 5' sidewalk				



### Project Notes

Action	Add to TIP	Date	8/23/2018	Type	Amend
Remarks	\$231,400 TAP				
Action		Date		Type	
Remarks					
Action		Date		Type	
Remarks					
Action		Date		Type	
Remarks					
Action		Date		Type	
Remarks					
Action		Date		Type	
Remarks					
Action		Date		Type	
Remarks					
Action		Date		Type	
Remarks					

Funding Information					
FY	Source	Phase	Federal	Match	Total
2020	TAP	CON	\$231,400	\$57,850	\$289,250
<b>Project Totals</b>			<b>\$231,400</b>	<b>\$57,850</b>	<b>\$289,250</b>



















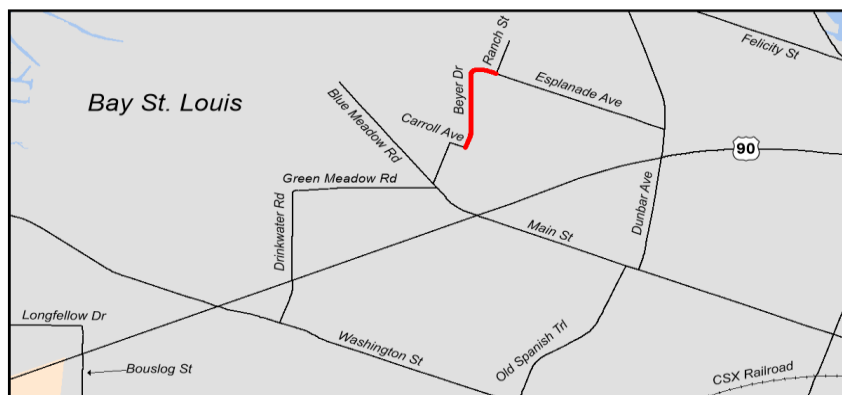


# Mississippi Gulf Coast Metropolitan Planning Organization

## FY2019-2022 Transportation Improvement Program (TIP)



<b>County</b>	Hancock	<b>Agency</b>	Bay St Louis	<b>Project #</b>	
<b>Improvement Type</b>	Bike/Ped	<b>Route</b>	Beyer Dr.		
<b>Project Termini</b>	Carroll Ave. to Ranch St. (.3 mile)				
<b>Project Description</b>	5' sidewalk on one side of the street				



### Project Notes

Action	Add to TIP	Date	8/23/2018	Type	Amend
Remarks	\$280,000 TAP				
Action		Date		Type	
Remarks					
Action		Date		Type	
Remarks					
Action		Date		Type	
Remarks					
Action		Date		Type	
Remarks					
Action		Date		Type	
Remarks					
Action		Date		Type	
Remarks					

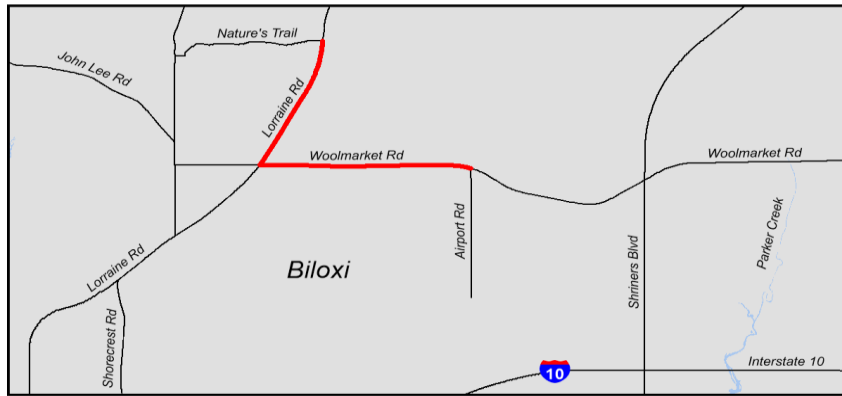
Funding Information					
FY	Source	Phase	Federal	Match	Total
2022	TAP	CON	\$280,000	\$236,491	\$516,491
<b>Project Totals</b>			<b>\$280,000</b>	<b>\$236,491</b>	<b>\$516,491</b>

# Mississippi Gulf Coast Metropolitan Planning Organization

## FY2019-2022 Transportation Improvement Program (TIP)



<b>County</b>	Harrison	<b>Agency</b>	Biloxi	<b>Project #</b>	
<b>Improvement Type</b>	Bicycle/Pedestrian		<b>Route</b>	Woolmarket Rd. & Lorraine Rd.	
<b>Project Termini</b>	East to Airport Rd. (.7 mile) and north to Nature's Trail (.5 mile)				
<b>Project Description</b>	5' sidewalks one side of roadway				



### Project Notes

Action	Add to TIP	Date	8/23/2018	Type	Amend
Remarks	\$880,000				
Action		Date		Type	
Remarks					
Action		Date		Type	
Remarks					
Action		Date		Type	
Remarks					
Action		Date		Type	
Remarks					
Action		Date		Type	
Remarks					
Action		Date		Type	
Remarks					

Funding Information					
FY	Source	Phase	Federal	Match	Total
ILL	TMA-STBG	CON	\$880,000	\$220,000	\$1,100,000
<b>Project Totals</b>			<b>\$880,000</b>	<b>\$220,000</b>	<b>\$1,100,000</b>















# Mississippi Gulf Coast Metropolitan Planning Organization

## FY2019-2022 Transportation Improvement Program (TIP)

### Bridge Group

#### Group Description

The focus of this group is to provide for the building of a new bridge, repair, restoration or replacement of the components of the existing structure, including asphaltic surfacing or concrete overlays, as well as work to correct safety defects along functionally classified roadways. The Mississippi Gulf Coast MPO will set aside \$300,000 in STP funds annually for this purpose. GRPC serving as MPO staff will work with LPAs to identify one bridge per year based on inspection results and criteria identified in a bridge program evaluation and prioritization process. The MPO will approve the final recommendation.

Agency	Project Description	Scope	Date added	Fed. Funds	TIP year
Biloxi	Cedar Lake Rd - Biloxi river	Bridge	8/23/2018	\$300,000	2021
Biloxi	Cedar Lake Rd - Biloxi river	Bridge	8/23/2018	\$260,000	2022

*Projects identified for group funding allocation have no significant environmental impact and therefore are deemed Categorical Exclusions.*



# Mississippi Gulf Coast Metropolitan Planning Organization

## FY2019-2022 Transportation Improvement Program (TIP)

### Bicycle/Pedestrian/Transit Group

#### Group Description

The primary focus of this group is to provide for “independent” projects which provide bicycle, pedestrian and transit access and safety improvements within the right-of-way or easements along functionally classified roadways. These “independent” projects will usually be stand-alone in nature, not associated with other federally funded roadway improvements such as reconstruction or widening. The Mississippi Gulf Coast MPO will set aside \$500,000 or 10% (whichever is less) of its annual allocation of STBG funds for projects to improve bicycle, pedestrian and transit accessibility and mobility in the region. The MPO initiates a Call for Projects during the TIP Update and TIP Amendment periods for the funding in the Bicycle, Pedestrian and Transit Project Group. The project evaluation process is described in Section VI. An application is required to be completed for consideration.

Agency	Project Description	Scope	Date added	Fed. Funds	TIP year
Pass Christian	North St. - Sidewalks from High School to Pass Estates	Bike/Ped	6/25/2015	\$452,800	2019
Gulfport	20th Ave. - US 90 to 15th St.	Bike/Ped	2/23/2017	\$507,169	2019
Ocean Springs	East Beach - Multiuse pathway from Holcomb Blvd. to Halstead Rd.	Bike/Ped	8/23/2018	\$384,000	2020
Long Beach	Pineville Rd. PH II - Sidewalks from Harper McCaughan to Klondyke Rd.	Bike/Ped	8/23/2018	\$400,000	2021
Bay St Louis	Washington St. - Sidewalks from Old Spanish Trl. to St. Francis St.	Bike/Ped	8/23/2018	\$120,000	2020

*Projects identified for group funding allocation have no significant environmental impact and therefore are deemed Categorical Exclusions.*



# Mississippi Gulf Coast Metropolitan Planning Organization

## FY2019-2022 Transportation Improvement Program (TIP)

### Studies/Projects Group

#### Group Description

The Mississippi Gulf Coast MPO will set aside \$500,000 in STP funds annually for the purpose of developing and implementing studies/projects that directly support the MPO goals. The MPO funded studies are used to prepare a project for funding and implementation. Projects will be selected by GRPC based on needs identified through the agency's transportation planning process, Long Range Transportation Plan or a need expressed by an LPA. Studies or projects under \$50,000 can be initiated as needed without an MPO vote. Studies or projects over \$50,000 will require MPO action. This group enables to MPO to be more responsive to needs as they arise between amendment and update periods.

Agency	Project Description	Scope	Date added	Fed. Funds	TIP year
Pass Christian	Clark St Bridge Replacement	Bridge	3/1/2018	\$189,896	2019
Ocean Springs	Wayfinding Study	Study	8/23/2018	\$24,000	2019
D'Iberville	Sidewalk & Pedestrian Study	Study	8/23/2018	\$80,000	2019
Gulfport	Electric Vehicle Charging Stations	Study	8/23/2018	\$24,000	2019
Harrison County	Active Living Initiative	Study	8/23/2018	\$120,000	2019
Diamondhead	Traffic Study	Study	8/23/2018	\$60,000	2019
Bay St. Louis	Multiuse Pathway Study	Study	8/23/2018	\$8,000	2019

*Projects identified for group funding allocation have no significant environmental impact and therefore are deemed Categorical Exclusions.*

# Mississippi Gulf Coast Metropolitan Planning Organization

## FY2019-2022 Transportation Improvement Program (TIP)

### Federal Transit Administration (FTA) Funds



Coast Transit Authority FY2019 TIP					
FY	Project	Fund Source	FTA	CTA	Total
2019	Gulfport Tram Bridge Project	Sec 5339 or BUILD	\$12,800,000	\$3,200,000	\$16,000,000
2019	10/01/18-9/30/19	Sec 5307	\$2,325,000	\$2,325,000	\$4,650,000
2019	Preventive Maintenance	Sec 5307 or 5310	\$1,280,000	\$320,000	\$1,600,000
2019	Marketing/Planning	Sec 5307	\$240,000	\$60,000	\$300,000
2019	Computer Equipment	Sec 5307	\$20,000	\$5,000	\$25,000
2019	Shop Equipment	Sec 5307	\$16,000	\$4,000	\$20,000
2019	ADA Operating Expense	Sec 5307	\$280,000	\$70,000	\$350,000
2019	Transit Enhancements	Sec 5307	\$60,000	\$15,000	\$75,000
2019	Facility Rehab & Renovations	Sec 5307	\$160,000	\$40,000	\$200,000
2019	Purchase Office Equipment	Sec 5307	\$16,000	\$4,000	\$20,000
2019	Purchase Farebox Equipment	Sec 5307	\$40,000	\$10,000	\$50,000
2019	Purchase Communication Equipment	Sec 5307	\$80,000	\$20,000	\$100,000
2019	Purchase Revenue Vehicles	5339	\$800,000	\$200,000	\$1,000,000
2019	Purchase Support Vehicles	Sec 5307	\$36,000	\$9,000	\$45,000
2019	JARC Purchased Transportation	Sec 5307	\$365,000	\$0	\$365,000
2019	Mobility Manager	Sec 5307	\$44,000	\$11,000	\$55,000
2019	Electric Bus Project	Sec 5339	\$880,000	\$220,000	\$1,100,000
	<b>Totals</b>		<b>\$19,442,000</b>	<b>\$6,513,000</b>	<b>\$25,955,000</b>



# Mississippi Gulf Coast Metropolitan Planning Organization

## FY2019-2022 Transportation Improvement Program (TIP)

### Federal Transit Administration (FTA) Funds

Coast Transit Authority FY2020 TIP					
FY	Project	Fund Source	FTA	CTA	Total
2020	10/01/19-9/30/20	Sec 5307	\$2,400,000	\$2,400,000	\$4,800,000
2020	Preventive Maintenance	Sec 5307 or 5310	\$1,360,000	\$340,000	\$1,700,000
2020	Marketing/Planning	Sec 5307	\$240,000	\$60,000	\$300,000
2020	Computer Equipment	Sec 5307	\$20,000	\$5,000	\$25,000
2020	Shop Equipment	Sec 5307	\$16,000	\$4,000	\$20,000
2020	ADA Operating Expense	Sec 5307	\$296,000	\$74,000	\$370,000
2020	Transit Enhancements	Sec 5307	\$140,000	\$35,000	\$175,000
2020	Facility Rehab & Renovations	Sec 5307	\$200,000	\$50,000	\$250,000
2020	Purchase Office Equipment	Sec 5307	\$16,000	\$4,000	\$20,000
2020	Purchase Farebox Equipment	Sec 5307	\$40,000	\$10,000	\$50,000
2020	Purchase Communication Equipment	Sec 5307	\$80,000	\$20,000	\$100,000
2020	Purchase Revenue Vehicles	5339	\$800,000	\$200,000	\$1,000,000
2020	Purchase Support Vehicles	Sec 5307	\$36,000	\$9,000	\$45,000
2020	JARC Purchased Transportation	Sec 5307	\$365,000	\$0	\$365,000
2020	Mobility Manager	Sec 5307	\$48,000	\$12,000	\$60,000
	<b>Totals</b>		<b>\$6,057,000</b>	<b>\$3,223,000</b>	<b>\$9,280,000</b>



# Mississippi Gulf Coast Metropolitan Planning Organization

## FY2019-2022 Transportation Improvement Program (TIP)

### Federal Transit Administration (FTA) Funds

Coast Transit Authority FY2021 TIP					
FY	Project	Fund Source	FTA	CTA	Total
2021	10/01/20-9/30/21	Sec 5307	\$2,550,000	\$2,550,000	\$5,100,000
2021	Preventive Maintenance	Sec 5307 or 5310	\$1,440,000	\$340,000	\$1,800,000
2021	Marketing/Planning	Sec 5307	\$240,000	\$60,000	\$300,000
2021	Computer Equipment	Sec 5307	\$20,000	\$5,000	\$25,000
2021	Shop Equipment	Sec 5307	\$16,000	\$4,000	\$20,000
2021	ADA Operating Expense	Sec 5307	\$312,000	\$78,000	\$390,000
2021	Transit Enhancements	Sec 5307	\$80,000	\$20,000	\$100,000
2021	Facility Rehab & Renovations	Sec 5307	\$200,000	\$50,000	\$250,000
2021	Purchase Office Equipment	Sec 5307	\$16,000	\$4,000	\$20,000
2021	Purchase Farebox Equipment	Sec 5307	\$40,000	\$10,000	\$50,000
2021	Purchase Communication Equipment	Sec 5307	\$80,000	\$20,000	\$100,000
2021	Purchase Revenue Vehicles	5339	\$800,000	\$200,000	\$1,000,000
2021	Purchase Support Vehicles	Sec 5307	\$36,000	\$9,000	\$45,000
2021	JARC Purchased Transportation	Sec 5307	\$375,000	\$0	\$375,000
2021	Mobility Manager	Sec 5307	\$48,000	\$12,000	\$60,000
	<b>Totals</b>		<b>\$6,253,000</b>	<b>\$3,362,000</b>	<b>\$9,635,000</b>

# Mississippi Gulf Coast Metropolitan Planning Organization

## FY2019-2022 Transportation Improvement Program (TIP)

### Federal Transit Administration (FTA) Funds



Coast Transit Authority FY2022 TIP					
FY	Project	Fund Source	FTA	CTA	Total
2022	10/01/21-9/30/22	Sec 5307	\$2,700,000	\$2,700,000	\$5,400,000
2022	Preventive Maintenance	Sec 5307 or 5310	\$1,520,000	\$380,000	\$1,900,000
2022	Marketing/Planning	Sec 5307	\$240,000	\$60,000	\$300,000
2022	Computer Equipment	Sec 5307	\$20,000	\$5,000	\$25,000
2022	Shop Equipment	Sec 5307	\$16,000	\$4,000	\$20,000
2022	ADA Operating Expense	Sec 5307	\$312,000	\$78,000	\$390,000
2022	Transit Enhancements	Sec 5307	\$80,000	\$20,000	\$100,000
2022	Facility Rehab & Renovations	Sec 5307	\$200,000	\$50,000	\$250,000
2022	Purchase Office Equipment	Sec 5307	\$16,000	\$4,000	\$20,000
2022	Purchase Farebox Equipment	Sec 5307	\$40,000	\$10,000	\$50,000
2022	Purchase Communication Equipment	Sec 5307	\$80,000	\$20,000	\$100,000
2022	Purchase Revenue Vehicles	5339	\$800,000	\$200,000	\$1,000,000
2022	Purchase Support Vehicles	Sec 5307	\$36,000	\$9,000	\$45,000
2022	JARC Purchased Transportation	Sec 5307	\$375,000	\$0	\$375,000
2022	Mobility Manager	Sec 5307	\$48,000	\$12,000	\$60,000
	<b>Totals</b>		<b>\$6,483,000</b>	<b>\$3,552,000</b>	<b>\$10,035,000</b>



**FY 2018-2021 Mid-Year Transportation Improvement Program  
Federal Highway Administration  
Eastern Federal Lands Highway Division**

**MISSISSIPPI**

Project	Program FY	State	County	Park, Refuge, Forest or Other Partner Agency	Description	Type of Work	Primary Fund Source	Total Programmed Amount	Funds from Title	Delivered By	Status	Congressional District	FLMA Region
MS_FLAP_CRNTH_145(1)	2018	MS	Alcorn	Shiloh National Military Park	North Polk St. (Route MS 145) Bridge and Road Improvements	3RL-BRRP	FLAP	\$3,314,600.00	Title 23	Local	In Design	MS-01	NPS_SE
MS_FLAP_PRNT_3485(1)_3560(1)	2018	MS	Prentiss	USACE / Bay Springs Lake	Widening and improve .85 miles of CR3560; Upgrade .57 miles of CR3485 to oblige with all modes.	3RH	FLAP	\$633,835.00	Title 23	State	In Design	MS-01	USACE_MVD
NATR_3Q8	2018	MS	Hinds	Natchez Trace Parkway	Overlay Park Road - PM project from MP.67.136 to MP.77.136	2R	FLTP	\$1,592,580.00	Title 23	EFLHD	Planned	MS-02	NPS_SE
NATR_3Q8	2018	MS	Claiborne	Natchez Trace Parkway	Overlay Park Road - PM project from MP 45 to 59 (14.00 miles)	3RL-BRRP	FLTP	\$3,433,484.44	Title 23	EFLHD	In Design	MS-02	NPS_SE
NATR_3X7_3W13	2018	MS	Augusta	Natchez Trace Parkway	Overlay Park Road - PM project from MP 0 to 20 (20.00 miles)	3RL-BRRP	FLTP	\$2,840,043.00	Title 23	EFLHD	In Design	MS-03	NPS_SE
NP_VICK_12(5)20(2) LC	2018	MS	Warren	Vicksburg National Military Park	Emergency repair work for Confederate Avenue and union Avenue	3RH	FLTP	\$350,000.00	Title 23	EFLHD	Planned	MS-02	NPS_SE
SO MS ERFO FW PASW 2016-1(1)	2018	MS	Yazoo	Panther Swamp Nat'l Wildlife Refuge	Repair TX Eastern Spur Rd & Bombing Range Rd DSR PASW7-105-TESR-0.59-1.09/ PASW-12-T310-BRT-0.4-0.6	3RH	FLTP	\$72,065.00	Title 23	FWS	Planned	MS-02	FWS_R4
NP_GUI5_15(3)	2019	MS	Jackson	Gulf Islands National Seashore	Safety improvements on Park Road - paved shoulders, gaurdrail	NEW	NPS	\$640,000.00	Title 54	EFLHD	In Design	MS-04	NPS_SE
NP_NATR_3O19_3P24	2019	MS	Madison	Natchez Trace Parkway	Overlay Park Road from MP 103.7 to MP 110.32	3RL-BRRP	FLTP	\$1,753,429.00	Title 23	EFLHD	In Design	MS-02	NPS_SE
MS_FLAP_CALCO_820(1)	2020	MS	Calhoun	USACE/Grenada Lake Reservoir	Overlay 7.6 miles of CR306 and the replacement of 7 bridges	3RL-BRRP	FLAP	\$4,080,000.00	Title 23	State	In Design	MS-03	USACE_MVD
NP_NATR_3A17_2D11	2020	MS	Tishomongo, MS, Colbert, AL	Natchez Trace Parkway	Overlay Park Road from MP 299.16 to MP 316.55	3RL-BRRP	FLTP	\$3,550,790.00	Title 23	EFLHD	Planned	MS-08	NPS_SE
NP_VICK_12(4)_20(1)_21(1)	2020	MS	Warren	Vicksburg National Military Park	Repairs of Confederate Ave, Union Ave and Louisiana Circle	3RH	FLTP	\$1,304,717.00	Title 23	EFLHD	Planned	MS-02	NPS_SE
NP_NATR_3D34_3E15	2021	MS	Pontotoc, Lee	Natchez Trace Parkway	Overlay Park Road from MP 253.44 to MP 268.63	2R	FLTP	\$5,188,832.00	Title 23	EFLHD	Planned	MS-02	NPS_SE
NP_NATR_3E16_3F25	2021	MS	Pontotoc, Lee, Chickasaw	Natchez Trace Parkway	Overlay Park Road from MP 238.84 to MP 253.44	2R	FLTP	\$3,772,351.00	Title 23	EFLHD	Planned	MS-02	NPS_SE
NP_NATR_3O20	2021	MS	Madison	Natchez Trace Parkway	Overlay Park Road from MP 112.4 to MP 114.6	3RH	FLTP	\$4,840,621.00	Title 23	EFLHD	Planned	MS-02	NPS_SE
NATR_BMS_FY18(1)	2018	ZZ	Multiple	Multiple	Bridge Preventive Maintenance Projects	BRRH	FLTP	\$750,000.00	Title 23	EFLHD	Planned	Various	NPS_SE
NATR_BMS_FY19(1)	2019	ZZ	Multiple	Multiple	Bridge Preventive Maintenance Projects	BRRH	FLTP	\$500,000.00	Title 23	EFLHD	Planned	Various	NPS_SE
NP_SER_BMS_FY18(2)	2019	ZZ	Various	Various	FY18 Regionwide BMS, VNM Park 11 Structures	BRRH	FLTP	\$350,000.00	Title 23	EFLHD	Planned	Various	NPS_SE
SER_PMS_FY18(1)	2019	ZZ	Various	Various	Pavement Preservation Project for Small Parks	2R	FLTP	\$2,000,000.00	Title 23	EFLHD	Planned	Various	NPS_SE
SER_PMS_FY19(1)	2019	ZZ	Various	Various	FY19 Regionwide Pavement Preservation Projects	2R	FLTP	\$2,000,000.00	Title 23	EFLHD	Planned	Various	NPS_SE

**APPENDIX A****MS Gulf Coast TIP: Updates, Amendments and Modifications Tracker****October 2013 Amendments/Modifications:**

- Gulfport – Pass Road Traffic Signals/16 intersections - \$444,000 STP
- Jackson County – Hwy 609/Old Fort Bayou Rd - \$1,493,640 STP
- D'Iberville – Big Ridge Rd & D'Iberville Blvd/1-10, Dewey Lawrence, South - \$2,938,778 STP
- Jackson County – Lemoyne Blvd/Brittany Ave - \$308,000 STP
- Gulfport – Courthouse Rd/Pass Rd to US 90 - \$2,683,532 STP
- Bay St. Louis – Old Spanish Trail Lighting/Main St to City Limits - \$640,640 STP

**Increase Funding (amendment)**

- Biloxi - Popp's Ferry /Cedar Lake to D'Iberville Blvd - Add \$5,000,000 STP for a total of \$7,204,800 STP
- Pascagoula – Hospital Rd/Old Mobile Hwy to US 90 – Add \$1,798,817 STP for a total of \$2,293,217 STP
- Gautier – Martin Bluff Rd/Gautier-Vancleave Rd to Frontage Rd – Add \$2,392,005 STP for a total of \$3,328,005 STP

**Remove Project (amendment)**

- Pascagoula – Ingalls Ave/Chicot Rd. & Martin St. \$396,000 STP
- Harrison County – Hwy 605 Frontage Rd./Lorraine Rd to 2000' North - \$726,800 STP
- D'Iberville – Automall Pkwy & Rodriguez St./D'Iberville Blvd to I-110 - \$200,000 STP
- Gulfport – Seaway Rd Pedestrian Path/Three Rivers Rd to Lorraine Rd - \$788,304 STP

**Modifications**

- Biloxi - Popp's Ferry Rd/Cedar Lake Rd to D'Iberville Blvd – Move from FY 2013 to FY 2015
- Gulfport – 28<sup>th</sup> St/34<sup>th</sup> Ave to 23<sup>rd</sup> Ave – Move from FY 2012 to FY 2014
- Jackson County – Old Fort Bayou Rd/Yellow Jacket Rd - Move from FY 2014 to FY 2015
- Biloxi – Popp's Ferry Road Extension/Pass Road to US 90 – Move from FY 2012 to FY 2018
- Gulfport – Seaway Rd/Three Rivers Rd to 1 mile east – Move from FY 2013 to FY 2014
- Pascagoula – Hospital Rd/Old Mobile Hwy to US 90 – Move from FY 2015 to FY 2016
- Bay St Louis – Old Spanish Trl/City Limits to Main St – Move from FY 2013 to FY 2014
- Gautier – Martin Bluff Rd/Gautier-Vancleave Rd to Frontage Rd - Move from FY 2013 to FY 2016
- Gulfport - Deadeaux Rd/ Three Rivers rd to Hwy 605 – Move from FY 2013 to FY 2015
- Gulfport – Ship Island Terminal Project/ Bert Jones Yacht Basin – Move from FY 2013 to FY 2015
- Bay St. Louis – US 90 Pedestrian Path/BSL Bridge to Main St - Move from FY 2013 to FY 2015
- Ocean Springs – Government St/Hanley Rd to Hanshaw Rd - Move from FY 2013 to FY 2014
- D'Iberville – D'Iberville Blvd/Central Ave to Automall Pkwy - Move from FY 2013 to FY 2015
- Pass Christian – Cedar Ave/RR to US 90 - Move from FY 2015 to FY 2018
- Biloxi – Reynoir St and Jackson St/Downtown Biloxi – Move from FY 2014 to FY 2015
- Harrison County – Biloxi River Bridge/Lorraine Rd – Move from FY 2013 to FY 2014
- Gautier – Hwy 57/Brown Rd - Move from FY 2013 to FY 2015
- Moss Point – Main St/South to Jefferson - Move from FY 2013 to FY 2015
- Moss Point – Second St/East Moss Point - Move from FY 2014 to FY 2015

<b>March 2014 Amendments/Modifications:</b>
· Ocean Springs – Porter Ave/Martin Avenue to Howard Ave – Move from FY 2013 to FY 2018
· Gulfport – Deadeaux Road/Three Rivers Rd to Hwy 605 – Move from FY 2015 to FY 2016
· Bay St. Louis – US 90 Pedestrian Path/BSL Bridge to Main St – Move from FY 2015 to FY 2016
· D’Iberville – D’Iberville Blvd/Central Ave to Automall Pkwy - Move from FY 2015 to FY 2016
· Harrison County – Biloxi River Bridge/Lorraine Rd – Change from FY 2014 to FY 2015
· Gautier – Hwy 57/Brown Road - Change from FY 2015 to FY 2016
· Gulfport – Pass Road Signal System/16 intersections - Change from FY 2014 to FY 2015
· Gulfport – Courthouse Rd/Pass Rd to US 90 – Change from FY 2018 to FY 2017
· D’Iberville – D’Iberville Blvd and Big Ridge Rd/ I-10 ramps – Change from FY 2015 to FY 2016
· Bay St Louis – Old Spanish Trl/Main St to Waveland Limits - Change from FY 2015 to FY 2016
<b>June 2014 Amendments/Modifications:</b>
<b>Amendments</b>
· Ocean Springs – Porter Avenue/Martin Avenue to Howard Avenue. Remove Project.
· Jackson County – Hwy 57/Old Spanish Trl to US 90. Remove Project.
· CTA – Purchase replacement mobile surveillance equipment. \$128,000 (FTA) \$32,000 (CTA) Add Project.
· CTA – Expansion of the Gulfport Transit Center Intermodal Hub. \$6,560,000 (FTA) \$1,640,000 (CTA) Add Project.
<b>October 2014 Amendments/Modifications:</b>
<b>Modifications</b>
· Advance construction strategy was implemented
<b>March 2015 Amendments/Modifications:</b>
<b>Modifications</b>
· Added \$1,550,000 in TE funds under the TAP group in 2015
<b>June 2015 Amendments/Modifications:</b>
<b>Modifications</b>
· Harrison Co.–Biloxi River Bridge. Move \$3,000,000 STP into FY14 from FY15. Leave balance of \$1,211,197 STP in FY16.
· Gautier - Martin Bluff Rd. Add ROW Phase. \$3,199,682 Fed. Earmark
· CTA – Change funding fiscal year. Expansion of Gulfport Transit Center Intermodal Hub. Move and split \$6,560,000 in FY 2015 to FY 2016 (\$3,280,000) and FY 2017(\$3,280,000).
<b>Group Project Adjustments</b>
· D’Iberville – Add project to Safety Group. D’Iberville Blvd and Boney Ave. Traffic signal. \$125,000 STP at 100%.
· D’Iberville – Remove project from Bike/Ped/Transit Group. D’Iberville Blvd/Central Ave to Automall Pkwy. \$97,002 STP
· GRPC – Adjust funding for safety projects to reflect each county’s MOU.

· Long Beach – Added study. Pineville Rd. \$60,000
· Diamondhead – Added study. Circulation. \$60,000
<b>Amendments</b>
<u>Remove from TIP</u>
· Gulfport – Ship Island Terminal Project. \$560,301 STP
· Pass Christian – Cedar Ave/ Railroad to US 90. \$163,570 STP
<u>Add to TIP</u>
· Waveland - Waveland Avenue Sidewalk Project: \$1,264,000 STP
· Gulfport - Landon Road Widening Project PH I: \$1,000,000 STP
· Gulfport - Airport Road Improvements: \$550,000 STP
· Pass Christian - North Street Sidewalks: \$452,800 STP
<b>October 2015 Amendments/Modifications:</b>
<u>Amendment: Added to TIP</u>
· Biloxi - Poppo Ferry Road. Submarine Cable. \$749,000 STP (Request made by MDOT)
<b>November 2015 Amendments/Modifications:</b>
· Move Moss Point Main Street sidewalks project from FY17 to FY18
· Move Jackson County Hwy 609 @ Old Fort Bayou from FY18 to FY19
· Move Pascagoula Hospital Road from FY17 & 18 to FY16 & 17
· Move Biloxi Poppo Ferry Extension from FY19 to FY18
· Adjust D'Iberville Big Ridge Road project AC funding split
· Move Gulfport Courthouse Road project from FY17&18 to FY16&17
· Move Gautier Martin Bluff Road project from FY16 & 17 to FY17 &18
· Adjust Biloxi River Bridge AC funding split
· Move Jackson County Lemoyne Blvd @ Brittany Ave from FY16 to FY17
<b>June 2016 Amendments and Modifications</b>
· Add MDOT project: Bridge Group #107213-10100 (FY2016) I-10 Widening from Hwy 57 to the Alabama State Line. (Funding for preliminary engineering phase – total \$750,000 (\$600,000 Federal, \$150,000 State/Local))
· Increase Funds \$259,260 for Gulfport's Dedeaux Road project
· Increase Funds \$676,270 for Gulfport's Courthouse Road project
· Increase Funds \$1,208,133 for Gulfport's Landon Road project
· Remove Gautier Hwy 57 & Brown Road Signal Project at LPA request
· Remove D'Iberville Big Ridge and D'Iberville Blvd Project at LPA request
· Add Waveland, Nicholson Ave overlay and widening, \$800,000 STP
· Add Diamondhead, Golf Club Drive Roundabout, \$200,00 STP
· Add Diamondhead, I-10 interchange lighting, \$400,00 STP

- Add Long Beach, Pineville Road sidewalks, \$1,000,000 STP
- Add D'Iberville Poppo Ferry Realignment, \$2,938,779 STP
- Add Jackson Co. Signal at Lemoyne and McCann, \$360,000 STP
- Add Jackson Co. Yellow Jacket Street sidewalks, \$160,000 TAP
- Add Gulfport Seaway Road Multiuse Pathway, \$788,304 TAP
- Add Bay-Waveland School District Pine street sidewalks, \$244,000 TAP

**Coast Transit Authority (CTA) Amendment(s):**

- Sec 5307 Preventive Maintenance Increase to total \$1,663,000 (federal \$1,330,400, local \$332,600)
- Sec 5307 JARC Purchased Transportation Increase to total \$380,000 (federal \$380,000, local \$0)
- Sec 5310 New Freedom Services Increase to total \$840,000 (federal \$672,000, local \$168,000)
- Sec 5307 Mobility Manager Increase to total \$75,000 (federal \$60,000, local \$15,000)
- Sec 5307 Gulfport Intermodal Hub Increase to total \$8,345,000 (federal \$6,676,000, local \$1,669,000)
- Add New Project: Sec 5339 Gulfport Hwy 90 Tram Bridge Project Total \$9,856,000 (federal \$7,884,800, local \$1,971,200)

**September 2016 Amendments/Modifications:**

- Lemoyne and Brittany (Jackson Co.) received additional funds and was moved to 2016
- Courthouse Road (Gulfport) received additional funds and was moved to 2016
- Dedeaux Road (Gulfport) received additional funds and was moved to 2016
- Main Street (Moss Point) sidewalks were moved into 2016
- Hospital Road (Pascagoula) was divided into two projects (Phase 1 in FY16, Phase 2 in FY17)

**February 2017 Amendments and Modifications**

**Amendments:**

- Remove Bay St Louis, Old Spanish Trail lighting (\$640,640 STP)
- Remove Bay St Louis, Hwy 90 multiuse pathway (\$164,800 STP)
- Add Diamondhead, Aloha Dr widened shoulder (\$136,400 TAP)
- Add Diamondhead, Noma Dr multiuse pathway (\$430,400 TAP)
- Add Diamondhead, Golf Club Dr sidewalk extension (\$400,000 STP)
- Add Ocean Springs, Porter Ave bike/ped improvements (\$930,000 STP)
- Add Gulfport, Ship Island Ferry program upgrades (\$1,156,913 Earmark)
- Add Gulfport, Hwy 90 and 20<sup>th</sup> Ave Improvements (\$507,169 STP)
- Funding Increase, Gulfport, Dedeaux Rd by \$1,573,635 STP in FY17
- Funding Increase, Gulfport, Courthouse Rd by \$623,598 STP in FY17

**Coast Transit Authority (CTA) Amendment(s):**

- CTA Funding Increase: Computer Equipment, Sec 5307 increase from \$16,000 to \$24,000
- CTA Additional Funds: Expand Gulfport Multimodal Hub, Sec 5307 \$8,878,408 FY18
- CTA Additional Funds: Gulfport/Hwy 90 Bike/Ped/Tram Bridge, Sec 5339 \$8,925,500 FY18

**Modifications:**

· Bay-Waveland School District, Pine Street moved FY17 to FY18
· Gulfport, Seaway Road moved from FY17 to FY18
· Gulfport, Airport Road moved FY17 to FY19
· Jackson Co, Lemoyne/McCann moved from FY17 to FY18
· Jackson Co, Hwy 609 & Old Fort Bayou moved from FY19 to FY20
· Jackson Co, St. Martin N Elementary moved from FY20 to FY18
· D'Iberville Boney/D'Iberville Blvd moved from FY17 to FY18
· D'Iberville Popp's Ferry Realignment advance construction over FY18 and FY19
· Biloxi Popp's Ferry Extension advance construction over FY18 and FY19
· Diamondhead, Golf Club Drive Roundabout moved from FY18 to FY17
· Waveland, Waveland Ave moved from FY19 to FY18
· Long Beach, Pineville Road moved from FY20 to FY17

### May 2017 Amendments & Modifications

#### Amendments:

- Long Beach, Changed Pineville Road project termini from Alexander Road to Harper-McCann School
- ~~Waveland, Changed Waveland Ave project termini from Dubuc Lane to the city park south of CSX RR tracks~~ *City elected not to change termini*
- Gulfport, Add Ship Island Ferry Terminal Improvement Project, Earmark Funds \$1,156,913

#### Modifications:

- Pascagoula, Decrease Hospital Road Phase 2 FY17 STP/Non-urban funds by \$142,274, total is \$1,250,943
- Pascagoula, Increase Hospital Road Phase 1 FY16 STP/Non-urban funds by \$356,766, total is \$1,256,766
- Biloxi, move Popp's Ferry Extension from FY18/19 to FY19/20
- Gulfport, Add \$383,000 STP to Courthouse Road in FY17
- Hancock Co, Change Beach Access Study termini from Buccaneer State Park to Lakeshore Drive
- GRPC, Add STP group funds to Get To B safety projects, phase 2 development \$150,000
- GRPC, Add STP group funds to Get To B professional development safety series \$12,000
- Jackson Co, Add STP group funds to the Countywide Bike Plan Study, increase from \$80,000 to \$91,463

### August 2017 Amendments & Modifications

#### Amendments:

- Removal of 3 Diamondhead projects from the TIP: Golf Cart Drive Sidewalks, Golf Cart Drive Roundabout & Noma Drive Multi-use Pathway
- Removal of Biloxi Sidewalk project on Reynoir and Jackson Streets

#### Modifications:

- Waveland, increase funds for FY17 Waveland Sidewalk Study from \$80,000 to \$82,641
- Biloxi, add the Biloxi Rail Corridor Study for \$150,000 FY18 STP-Study Group
- Pascagoula, Move Hospital Road Ph. 2 from FY17 to FY18
- Bay St Louis, Move Carrol Ave SRTS project from FY17 to FY18
- Diamondhead, Move I-10 lighting project to FY18 to align with MDOT reconstruction project
- Gautier, Remove Advance Construction for Martin Bluff Road, project in FY19
- D'Iberville, Remove Advance Construction for Popp's Ferry Realignment, project in FY20

· Long Beach, Termini Correction on Pineville Rd sidewalks from Royal Dr to Willow Creek Dr
· Biloxi, include TIP Page for Poppo Ferry Bridge replacement earmark funds (not programmed at this time)
<b>December 2017 Amendments &amp; Modifications</b>
<b>Amendments:</b>
· Pascagoula, Increase Hospital Road Phase 1 funds by \$55,706, new total is \$1,312,472
· Pascagoula, Increase Hospital Road Phase 2 funds by \$293,852 and \$170,140 for RR costs, new total is \$1,714,935
<b>Modifications:</b>
· D'Iberville, Increase Boney Ave Signal STP allocation by \$73,500, new total is \$198,950
· Diamondhead, increase STP allocation for I-10 lighting project by \$48,485, new total is \$448,485
<b>January 2018 Amendments &amp; Modifications</b>
<b>Modifications:</b>
· Gautier, Split project between FY19 & 20, adjust Non-Urban funds allocation to reflect available balances and shift remaining funding to STP-TMA as the funding source. All totals remain the same.
· GRPC Traffic Signal Prioritization Project funding increase from \$40,000 to \$50,000 in FY2018
· Jackson County, Shift the McCann Road Overpass Study from FY17 to FY18 to reflect actual obligation year
· Biloxi, Adjust ROW phase for Poppo Ferry Road Extension. Shift from FY17 to FY18 and update earmark funds with available federal balances. ROW costs exceeded available federal funds, city is covering balance so match will exceed the original 20% match requirement.
<b>March 2018 Amendments &amp; Modifications</b>
<b>Amendments:</b>
· Biloxi, Increase funds for Poppo Ferry Submarine Cable by \$429,000. Increase from \$749,000 to \$1,178,000
<b>Modifications:</b>
· Diamondhead, Include a technical study on E. Aloha drive from Veterans to Kalani Drive in the FY18 study/projects group
· Pass Christian, include replacement of the Clark Ave. Bridge in the FY18 study/projects group
NOTE: at March1 MPO-TPC meeting new TIP handbook policies were adopted which included a funding increase cap of 20%. This applies to project totals currently on the 2017-2020 TIP and original award totals of projects added to the TIP after March 1, 2018.
<b>April 2018 Amendments &amp; Modifications</b>
<b>Modification:</b>
· Diamondhead, Increase funds for Interchange lighting project by \$89,697 STBG. Increase from \$448,485 to \$538,182 which maxes out their 20% increase capacity for this project.
· Jackson County, Move St. Martin N. Elementary sidewalk project from FY18 to FY19
· Pass Christian, Move Clark Street bridge replacement project from FY18 to FY19
<b>August 2018 Amendments &amp; Modifications DRAFT</b>
<b>Amendments:</b>

· Gulfport, Landon Road add \$751,867 STBG. Increase from \$2,208,133 to \$2,960,000 STBG
· Bay-Waveland School District, remove Pine St. sidewalk project from the TIP
· Gulfport, Add Dedeaux Rd (Ph. 2) Hwy 605 to Jessica Ln. to TIP Illustrative List \$3,760,000
· Bay St Louis, Add Beyer Dr. sidewalks from Carrol Ave. to Ranch St. in FY19, \$280,000 TAP
· Diamondhead, Add Montjoy Creek pathway from Diamondhead Drive to Rotten Bayou in FY 19, \$80,000 TAP
· Hancock Co., Add Washington St. Accessibility around S. Beach Blvd to FY19, \$240,000 TAP
· USM-Gulf Park, Add Gulf Park Dr. sidewalk from Bear Point to north of Hardy Hall in FY19, \$231,400 TAP
· Gulfport, Add Old Hwy 49 sidewalk from Oak Ln. to Robinson Rd. in FY20, \$160,000 TAP
· Gulfport, Add multiple school zone improvement projects to FY20, \$210,278 STBG
· Biloxi, Add Main St. and CSX rail line crossing to FY20, \$150,000 STBG
· Ocean Springs, Add East Beach Dr. from Holcomb Blvd. to Halstead Rd. to FY20, \$384,000 STBG (BPT)
· Bay St Louis, Add Washington St. sidewalks from Old Spanish Trl. To St. Francis St. in FY20, \$120,000 STBG (BPT)
· Ocean Springs, Add Ocean Springs Rd. from US 90 to Culeoka Dr. to FY21, \$2,258,400 STBG
· Moss Point, Add Jefferson St. sidewalks to include portion on Main St to 2nd St. to FY21, \$412,000 Non-urban STBG
· Harrison Co, Add Landon Rd. reconstruction from Coleman Rd. to 34th St. to FY21, \$1,360,000 STBG
· Long Beach, Add Pinville sidewalks ph. II from Harper MCCAughan to klondyke Rd. to FY21, \$400,000 STBG (BPT)
· Long Beach, Add Klondyke and Commission Rd. intersection to FY22, \$760,000 STBG
· Biloxi, Add Woolmarket Rd. sidewalks from Airport Rd. to Lorraine Rd. in FY22, \$880,000 TAP
· Moss Point, Add Macphelah Rd. and Jefferson St. intersection to FY22, \$509,000 Non-urban STBG
· Waveland, Change termini on Nicholson Ave. from Beach Blvd. to Jeff Davis Ave.
<b>Modifications:</b>
· Gulfport, Seaway Road add \$157,660 STBG funds. Increase from \$788,304 to \$945,964.
· Gulfport, Seaway Road change year and adjust funding sources to 2018 TAP - \$684,215 & 2019 STBG \$261,749
· Biloxi Woolmarket Sidewalks – Changed funding source from TAP to STBG
· Gulfport, 20th Ave. move from FY18 to FY19
· Diamondhead, E. Aloha Dr. move from FY18 to FY19
· Biloxi, Popp's Ferry Extension. Move from FY 19 to FY22.
· Gulfport, Airport Rd. Move project to the Illustrative List
· Biloxi, move Popp's Ferry bridge replacement to TIP Illustrative List, no MPO funds
· D'Iberville, move Popp's Ferry Rd. from D'Iberville Blvd. to Belle St. to TIP Illustrative List \$2,938,780