

TEI

**Tice Engineering, Incorporated
Engineering Services
Request for Qualifications - Traffic Studies**



Gulf Regional Planning Commission (GRPC)
Biloxi, Mississippi
Friday, June 19, 2020

Prepared by:
Tice Engineering Incorporated
510 South Vardaman Street
Wiggins, Mississippi 39577
(601) 928-4121
www.ticeeng.com



June 19, 2020

Gulf Regional Planning Commission (GRPC)
1635 Popp's Ferry Road, Suite G
Biloxi, MS 39532

RE: RFQ - ENGINEERING SERVICES FOR TRAFFIC STUDIES

Dear Board of Commissioners:

It is our understanding that Gulf Regional Planning Commission (GRPC) proposes to select an Engineering Consultant to perform traffic studies that are needed to recommend mitigation measures when existing transportation problems are evident in an area, such as high occurrences of crashes, increase in traffic volume or complex road geometrics causing issues. These services are essential and play a vital role in assisting the overall development, growth, and safety along the Mississippi Gulf Coast. Tice Engineering, Inc. (TEI) believes that our team can be an asset that the Gulf Regional Planning Commission could depend on for Engineering related projects.

If selected for the Engineering Services Contract, TEI proposes to facilitate work assignments utilizing the following personnel:

- **W. Ryan Tice, P.E.** – Engineer Manager: Point of Contact for selection process, contractual matters, and quality assurance.
- **Michelle Gill, E.I.** – Project Coordinator for all assignments.
- **Colt Ratliff, P.S.** – Survey Manager to coordinate all survey activities related to the assignment.

Assignments for this contract will be coordinated and managed out of the TEI Wiggins Office, 510 South Vardaman Street, Wiggins, Mississippi 39577.

In the past, TEI has gained valuable experience working assignments related to the scope of work. Our staff is familiar with aspects of the proposed scope and we believe this is an excellent partnership for the GRPC and TEI.

Should you have any questions related to our capabilities submittal, please do not hesitate to contact me.

Sincerely,
TICE ENGINEERING, INCORPORATED


W. Ryan Tice, P.E.
President



SURVEYING

As professional surveyors, we have over 50 combined years of experience in all aspects of surveying. We have the expertise and use of cutting-edge technology to tackle the most demanding projects, ranging from individual parcel plats to hydrographic surveys. The combination of our engineering and surveying departments under one roof give us an advantage. Our surveyors have experience understanding what the engineer wants and needs. It also allows us to manage projects from start to finish.

SURVEYING EQUIPMENT

- Mud Boat
- Air Boat
- 18' Center Console Bay Boat
- Four-Wheel Drive Survey Trucks
- ATVs and UTVs
- 30' Work Boat (Leased)

SURVEYING TECHNOLOGIES:

- Aerial Drone (Photogrammetry)
- SonarMite
- Auto Level
- Real Time Kinematic (RTK GPS (Network Capable))
- Robotic Total Stations
- Conventional Total Stations
- Terrestrial LiDAR Scanner (Leased)
- Single & Multibeam Hydrographic Scanners (Leased)
- Side Scan Hydrographic Equipment (Leased)
- Mobile LiDAR Scanner (Leased)

ENGINEERING

As professional engineers, we have over 60 years of experience within the civil engineering discipline. We utilize the latest versions of computer automated drafting software design, (CADD) to produce engineering plans and specifications for our clients. One aspect that we feel sets us apart from other firms, is our ability to "Listen" to what our clients needs are. Communication is the key to any successful project. Our project managers also incorporate reporting procedures into every project so that the client is always informed.

DESIGN SOFTWARE

- Microstation
- Geopak
- AutoCAD Civil 3D
- PLS CADD
- Hypack 2019
- Trimble Business Center
- Pix4D



TICE
ENGINEERING, INC.
 ENGINEERS / SURVEYORS
Trusted Engineers. Experienced Surveyors. Innovative Results.

510 S. Vardaman St. • Wiggins, MS 39577 • p. 601.928.4121
 www.ticeeng.com • info@ticeeng.com

ENGINEERING

W. RYAN TICE, P.E.
President/Engineer Manager

MICHELLE GILL, E.I.
Project Manager

SURVEYING

COLT RATLIFF, P.S.
Vice President/Survey Manager

MATTHEW JONES, P.S.
Crew Manager

DANNY FORE
Survey Technician

KEN CRIPPS
Survey Technician

CADD

JASON SNELL
Senior CADD Technician

GEORGE MERCIER
Senior CADD Technician

RONALD NORTROP
Senior CADD Technician

SHANE MCKNIGHT
CADD Technician

ADMINISTRATIVE

DONNA HOLLOMAN
Financial Manager

SHASITY BOND
Administrative Assistant

TREY DANZEY
Crew Chief

LUCAS KIRKLAND
Crew Chief

BRYCEN BURGE
Crew Chief

GREG ANDERSON
Crew Chief

*Additional staff may be added as necessary to meet the workload

TEAM ORGANIZATIONAL CHART

Project: TRAFFIC STUDIES

At TEI, our team has vast experience working on traffic improvement projects related to Engineering Services. Our team has the ability to produce quality products in a timely manner. Identified in the Project Matrix below are projects that our team has performed, as well as a Project Profile for each project.

| Project Matrix No. | 8 | 9 | 10 | 11 | 12 | 13 |
|--|---|---|---|--|--|--|
| TEI Employees | MDOT Coastal County Strategic Highway Safety Plan | MDOT US Hwy 45 Road Safety Audit | City of Wiggins Sidewalk Improvements Phase II | Covington Civil & Environmental I-110 off ramp onto Rodriguez Street, Biloxi, MS | MDOT MS Hwy 570 Traffic Signal Upgrades | MDOT US 49 at MS 42 Realignment and Signalization |
| W. Ryan Tice, P.E. <i>Engineer Manager</i> (MS-15169) | X | X | X | X | X | X |
| Michelle Gill, E.I. <i>Project Manager</i> (MS-6974) | X | X | X | X | X | X |
| Colt Ratliff, P.S. <i>Survey Manager</i> (MS-3008) | | | X | X | X | X |
| Matthew Jones, P.S. <i>Crew Manager</i> (MS-25130) | | | X | X | X | X |
| Jason Snell <i>Senior CADD Technician</i> | X | | X | X | X | X |
| George Mercier <i>Senior CADD Technician</i> | X | X | | X | X | X |

PROJECT PROFILE



PROJECT TEAM

W. Ryan Tice, P.E.
Engineer Manager

Michelle Gill, E.I.
Project Manager

George Mercier
Senior CADD
Technician



Project Number: HSIP-0002-02(065)/106951 101000
Project Name: US Hwy 45 Road Safety Audit
Client: Mississippi Department of Transportation (MDOT)
Client Project Manager: Daniel Helms, P.E., PTOE
Traffic Safety Engineer Manager
601.359.1454

Prime Consultant: Tice Engineering, Inc.

Contract Amount: \$78,125.45

Date Initiated: April 2015

Anticipated Completion Date: December 2016

Actual Completion Date: June 2016

Justifications: N/A

Tice Engineering, Incorporated was selected by the Mississippi Department of Transportation (MDOT) to conduct a Road Safety Audit (RSA) for Highway 45 in Clarke and Wayne counties. The audit identified improvements to the study area that could reduce accidents and potentially save lives.

Responsibilities Include:

- Analysis of crash data, accident reports and traffic studies.
- Site visits to develop safety improvements recommendations.
- Site audit with MDOT departments to discuss findings.
- Presentations to MDOT departments of initial and final recommendations.
- Final Report that meets Federal Highway Administration guidelines.



PROJECT PROFILE



PROJECT TEAM

W. Ryan Tice, P.E.
Engineering Manager

Michelle Gill, E.I.
Project Manager

Colt Ratliff, P.S.
Survey Manager

Matthew Jones, P.S.
Crew Manager

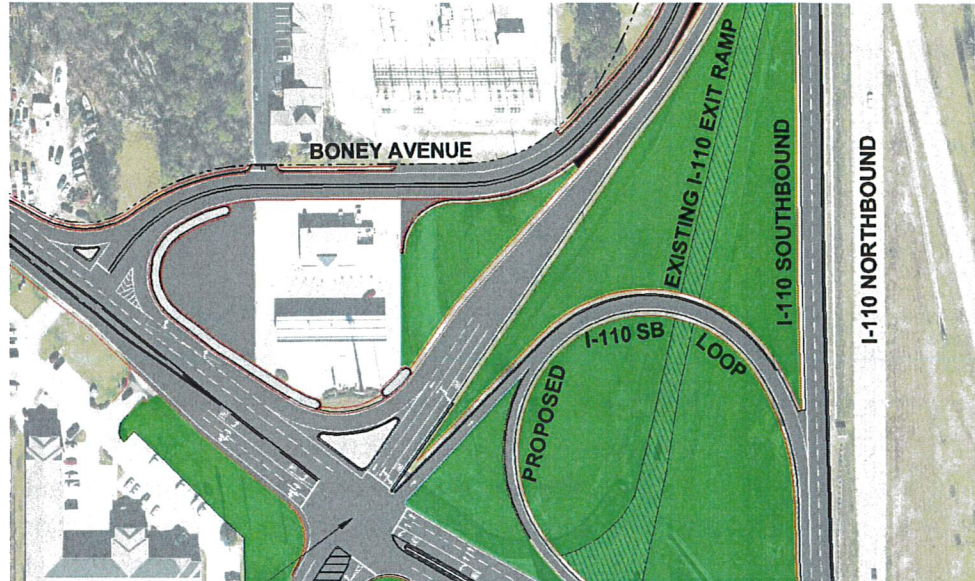
Jason Snell
Senior CADD Technician

George Mercier
Senior CADD Technician

Ron Northrop
Senior CADD Technician

Trey Danzey
Crew Chief

Lucas Kirkland
Crew Chief



Project Number: 1204-18

Project Name: I-110 off ramp onto Rodriguez Street, Biloxi, MS

Client: Covington Civil & Environmental

Client Project Manager: Ben Benvenuti, P.E.
Principal Engineer
228.396.0486

Prime Consultant: Tice Engineering, Inc.

Contract Amount: \$243,716

Date Initiated: February 2018

Anticipated Completion Date: 2025

Tice Engineering, Incorporated was selected to perform a Traffic Impact Study, Interstate Access Modification Request and Design Highway Plans for the interchange referenced above. The project is currently in the IAR stage.

Project Scope of Work:

- Traffic Impact Statement (complete)
- IAR (on going)
- Highway Plans - Design to be based off of approved IAR.

PROJECT PROFILE



PROJECT TEAM

W. Ryan Tice, P.E.
President

Colt Ratliff, P.S.
Survey Project
Manager

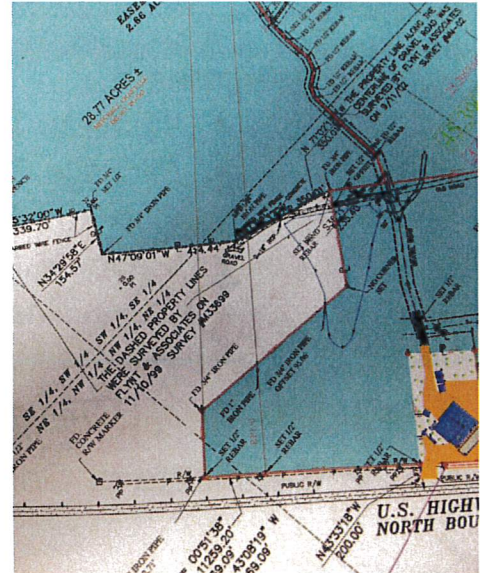
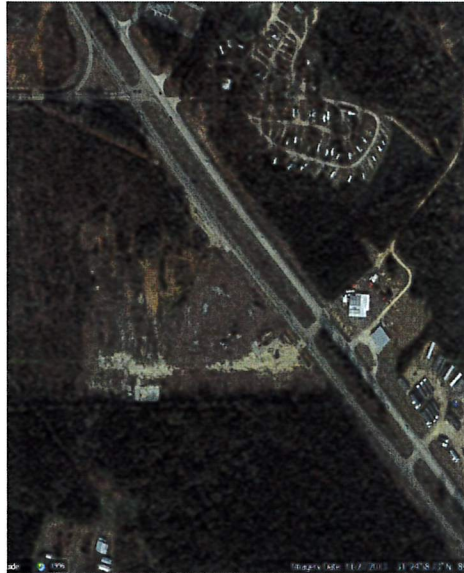
Matthew Jones, P.S.
Crew Manager

Jason Snell
Senior CADD
Technician

George Mercier
Senior CADD
Technician

Trey Danzey
Crew Chief

Lucas Kirkland
Survey Technician



Client: Mississippi Department of Transportation (MDOT)
Prime Consultant: Tice Engineering, Inc.
Project Name: Realignment and Signalization of MS Highway 42
at US Highway 49

Contract Amount: \$153,094.35

Date Initiated: June 13, 2014

Anticipated Completion Date: June 30, 2015

Actual Completion Date: September 2015

Delay Justifications: Development of pavement recommendation
and modifications to the proposed Right of Way by the Consultant

Tice Engineering was selected by the Mississippi Department of Transportation to prepare final ROW plans for the proposed realignment and signalization of MS Highway 42 at U.S. Highway 49 in Forrest County, Mississippi.

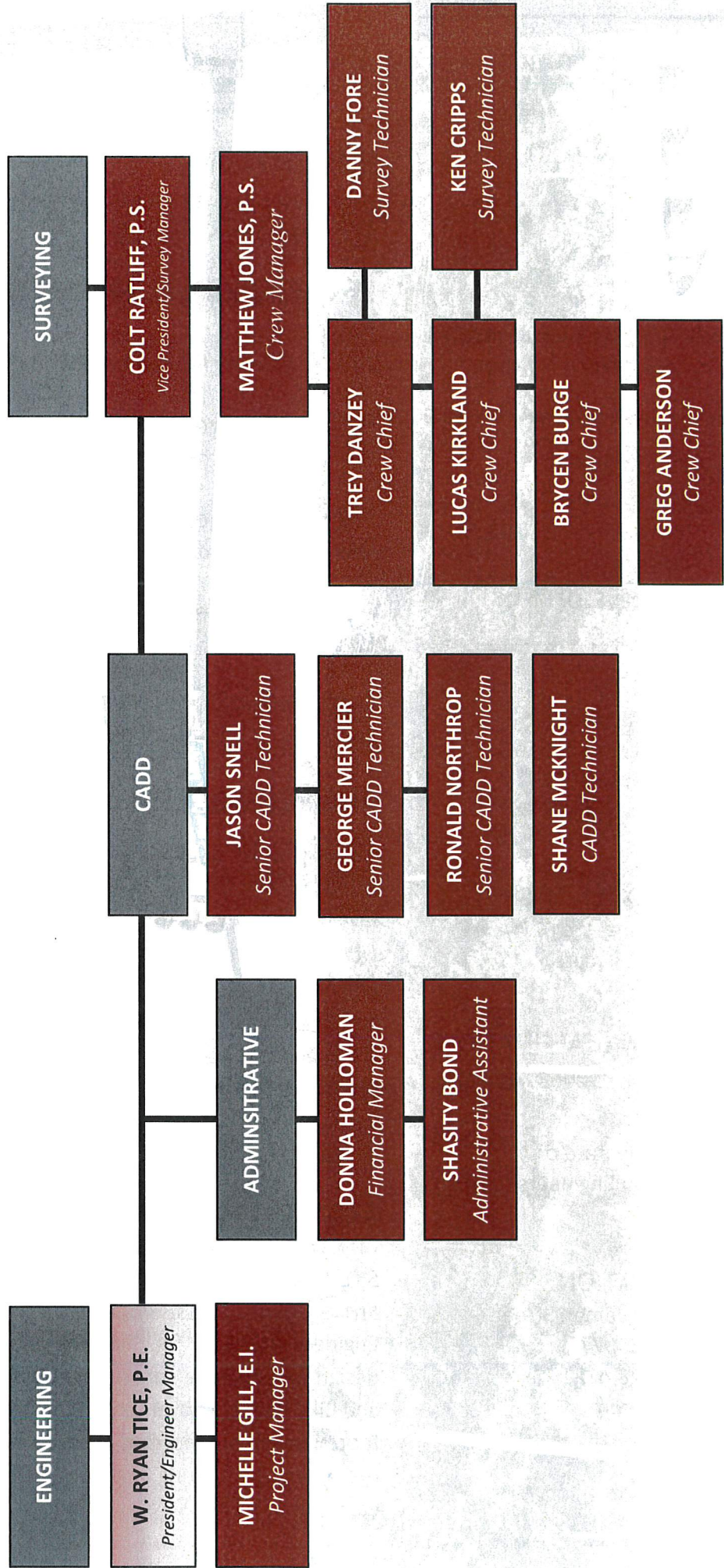
Responsibilities included:

- Perform complete Topographic and Boundary survey and property map for the project area
- Designed the realignment of MS Highway 42 to remove existing skew and supporting features such as drainage, traffic signal design and construction phasing to ensure the appropriate amount of Right of Way is purchased.
- Prepare and submit Final Right of Way plans to MDOT



TEI **TICE**
ENGINEERING, INC.
 ENGINEERS / SURVEYORS
Trusted Engineers. Experienced Surveyors. Innovative Results.

510 S. Vardaman St. • Wiggins, MS 39577 • p. 601.928.4121
 www.ticeeng.com • info@ticeeng.com



W. RYAN TICE, P.E.
PRESIDENT/ENGINEER MANAGER

ENGINEER MANAGER

MISSISSIPPI DEPARTMENT OF TRANSPORTATION

Roadway Safety Audit along Hwy 45

Clarke & Wayne Counties, Mississippi

Engineer Manager for a Roadway Safety Audit (RSA) along Highway 45 in Clarke and Wayne Counties, Mississippi. The project included an analysis of crash data, accident reports, traffic studies, and site visits to develop safety improvements along the study area. Safety improvement recommendations will be reviewed and implemented by the Mississippi Department of Transportation, as funding permits, to prevent future crashes in areas identified by the RSA.

ENGINEER MANAGER

COVINGTON CIVIL & ENVIRONMENTAL

I-110 off ramp onto Rodriguez Street

Biloxi, Mississippi

Engineer Manager to perform a Traffic Impact Study, Interstate Access Modification Request and Design Highway Plans for the interchange I-110 off ramp onto Rodriguez Street.

ENGINEER MANAGER

MISSISSIPPI DEPARTMENT OF TRANSPORTATION

MS Hwy 570 Traffic Signal Upgrades

Pike County, McComb, Mississippi

Engineer Manager for the MS Hwy 570 Traffic Signal upgrades in McComb, Mississippi. The Design Team tasked to design four (4) fully actuated traffic signals and ITS elements. Also, as part of the design, a median was designed to eliminate mid-block turning movements.

ENGINEER MANAGER

MISSISSIPPI DEPARTMENT OF TRANSPORTATION

Realignment and Signalization of MS Highway 42 at US Highway 49

Forrest County, Mississippi

Engineer Manager for topographic and boundary surveys and property map of the project area for use in design of the new 49/42 intersection. Project included Topographic and boundary surveys and property map, realignment of MS Hwy 42 to remove existing skew including all roadway design aspects.



MICHELLE GILL, E.I.
PROJECT MANAGER
michelle.gill@ticeeng.com

EDUCATION

Bachelor of Science in Biological Engineering 2004
Mississippi State University

PROFESSIONAL HISTORY

Engineer Intern August 2015 - Present
Tice Engineering Incorporated, Wiggins, Mississippi

Engineer Intern June 2006 – August 2015
Neel-Schaffer Incorporated, Hattiesburg, Mississippi

Environmental Technician October 2004 – May 2006
Golden Triangle Regional Solid Waste Management Authority, West Point, Mississippi

AREA OF EXPERTISE

- PLANNING
- WATER & SEWER
- STORM WATER
- PERMITTING

REGISTRATION

Mississippi License #6974

YEARS OF EXPERIENCE

Tice Engineering, Inc., 4 years
Other Firms, 9 years

PROFESSIONAL AFFILIATIONS

Registered Engineer-in-Training (EIT) with State of Mississippi
Solid Waste Association of North America (SWANA)
Southeastern Storm Water Association (SESWA)

OFFICE LOCATION

510 South Vardaman Street
Wiggins, MS 39577
Office: 601.928.4121
www.ticeeng.com

PROFESSIONAL EXPERIENCE

PROJECT MANAGER

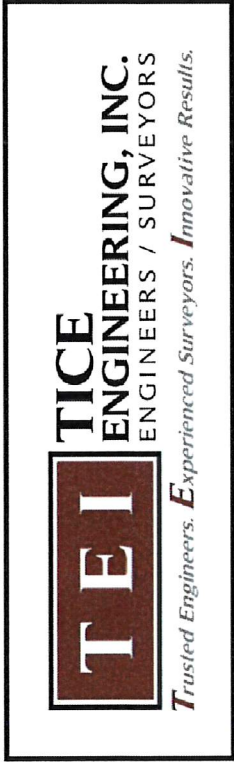
MISSISSIPPI DEPARTMENT OF TRANSPORTATION
Roadway Safety Audit for U.S. Highway 45
Clarke and Wayne Counties, Mississippi

Project Manager for a Roadway Safety Audit (RSA) along Highway 45 in Clarke and Wayne Counties, Mississippi. The project included analysis of crash data, accident reports, traffic studies, and site visits to develop safety improvements along the roadway. Safety improvements recommendations reviewed and implemented by the Mississippi Department of Transportation (MDOT), as funding permits, to prevent future crashes in areas identified by the Roadway Safety Audit.

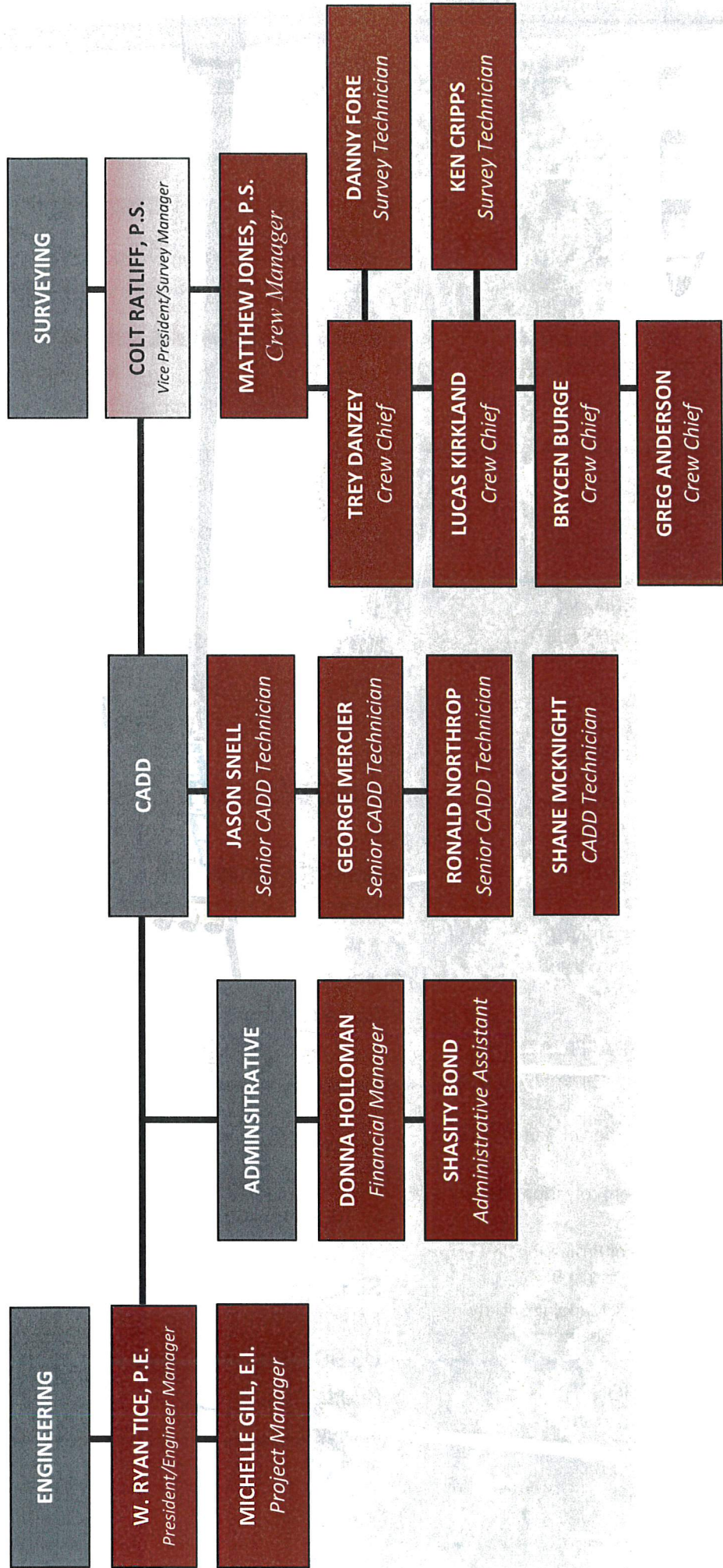
PROJECT MANAGER

MISSISSIPPI DEPARTMENT OF TRANSPORTATION
MS Hwy 570 Traffic Signal Upgrades
McComb, Mississippi

Project Manager for the MS Hwy 570 Traffic Signal upgrades in McComb, Mississippi. The Design Team tasked to design four (4) fully actuated traffic signals and ITS elements. Also, as part of the design, a median was designed to eliminate mid-block turning movements.



510 S. Vardaman St. • Wiggins, MS 39577 • p. 601.928.4121
 www.ticeeng.com • info@ticeeng.com



J. COLTER RATLIFF, P.S.
VICE PRESIDENT/
SURVEY MANAGER

SURVEY MANAGER

COVINGTON CIVIL & ENVIRONMENTAL

I-110 off ramp onto Rodriquez Street

Biloxi, Mississippi

Survey Manager to perform a Traffic Impact Study, Interstate Access Modification Request and Design Highway Plans for the interchange I-110 off ramp onto Rodriquez Street.

SURVEY MANAGER

MISSISSIPPI DEPARTMENT OF TRANSPORTATION

Realignment & Signalization of MS Highway 42 at US Highway 49

Forrest County, Mississippi

Survey Manager for Topographic and boundary surveys and property map of the project area for use in design of the new 49/42 intersection. Project included Topographic and boundary surveys and property map, realignment of MS Hwy 42 to remove existing skew including all roadway design aspects.

SURVEY MANAGER

CITY OF WIGGINS

SIDEWALK IMPROVEMENTS PHASE II

Stone County, Mississippi

Survey Manager for Sidewalk Improvements project to plan, design and oversee construction of Phase 2 of the City Sidewalk and Bike Path Improvements. The project designed a 3,440 linear foot sidewalk connecting the city's park to the middle school, expanding the existing backbone pedestrian infrastructure on the east side of town.



**MATTHEW JONES, P.S.
CREW MANAGER**

matthew.jones@ticeeng.com

EDUCATION

Associate in Applied Science in Drafting and Design Technology 2000
Mississippi Gulf Coast Community College

PROFESSIONAL HISTORY

Professional Surveyor January 2014 - Present
Tice Engineering Incorporated, Wiggins, Mississippi

Survey Intern June 2012 – December 2013
Tice Engineering Incorporated, Wiggins, Mississippi

Survey Intern June 2009 – June 2012
Knesal Engineering Services, Incorporated, Gulfport, Mississippi

Survey Crew Chief April 2008 – June 2009
Knesal Engineering Services, Incorporated, Gulfport, Mississippi

Project Engineer September 2004 – March 2008
Helix Electric, Incorporated, San Diego, California

Draftsman August 2003 – August 2004
Knesal Engineering Services, Incorporated, Gulfport, Mississippi

Project Engineer March 2000 – September 2002
Helix Electric, Incorporated, Biloxi, Mississippi

PROFESSIONAL EXPERIENCE

CREW MANAGER

CITY OF WIGGINS

SIDEWALK IMPROVEMENTS PHASE II

Stone County, Mississippi

Crew Manager for Sidewalk Improvements project to plan, design and oversee construction of Phase 2 of the City Sidewalk and Bike Path Improvements. The project designed a 3,440 linear foot sidewalk connecting the city’s park to the middle school, expanding the existing backbone pedestrian infrastructure on the east side of town.

CREW MANAGER

COVINGTON CIVIL & ENVIRONMENTAL

I-110 off ramp onto Rodriquez Street

Biloxi, Mississippi

AREA OF EXPERTISE

- BOUNDARY SURVEYS
- TOPOGRAPHIC SURVEYS
- CONSTRUCTION LAYOUT
- AERIAL SURVEYS

REGISTRATION

PROFESSIONAL SURVEYOR
Mississippi License #25130

YEARS OF EXPERIENCE

Tice Engineering, Inc., 8 years
Other Firms, 12 years

PROFESSIONAL AFFILIATIONS

Mississippi Association of Professional Surveyors (MAPS)

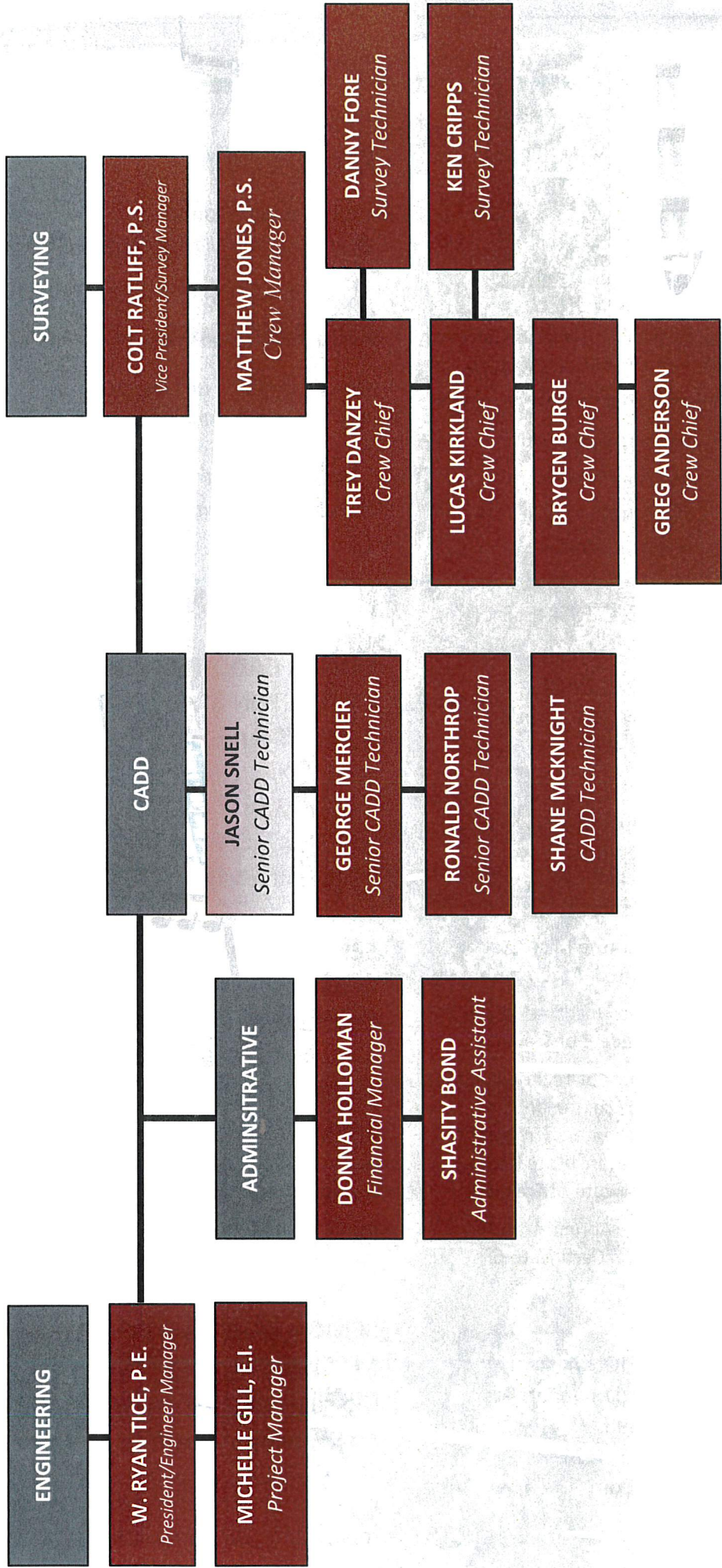
National Society of Professional Surveyors (NSPS)

OFFICE LOCATION

510 South Vardaman Street
Wiggins, MS 39577
Office: 601.928.4121
www.ticeeng.com

TEI **TICE ENGINEERING, INC.**
 ENGINEERS / SURVEYORS
Trusted Engineers. Experienced Surveyors. Innovative Results.

510 S. Vardaman St. • Wiggins, MS 39577 • p. 601.928.4121
 www.ticeeng.com • info@ticeeng.com



JASON SNELL
SENIOR CADD TECHNICIAN

survey consisted of all above ground features and below ground utilities. The field work utilized RTK GPS and Robotic Total Stations which were referenced to the Mississippi State Plane coordinate system east zone.

SENIOR CADD TECHNICIAN

MISSISSIPPI DEPARTMENT OF TRANSPORTATION

Realignment and Signalization of MS Highway 42 at US Highway 49

Forrest County, Mississippi

Senior CADD Technician for Topographic and boundary surveys and property map of the project area for use in design of the new 49/42 intersection. Project included Topographic and boundary surveys and property map, realignment of MS Hwy 42 to remove existing skew including all roadway design aspects.

SENIOR CADD TECHNICIAN

CITY OF WIGGINS

SIDEWALK IMPROVEMENTS PHASE II

Stone County, Mississippi

Senior CADD Technician for Sidewalk Improvements project to plan, design and oversee construction of Phase 2 of the City Sidewalk and Bike Path Improvements. The project designed a 3,440 linear foot sidewalk connecting the city's park to the middle school, expanding the existing backbone pedestrian infrastructure on the east side of town.

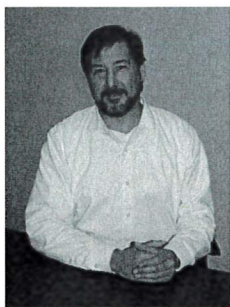
SENIOR CADD TECHNICIAN

MISSISSIPPI DEPARTMENT OF TRANSPORTATION

US 90 from Waveland Avenue to Beach Boulevard

Hancock County, Mississippi

Senior CADD Technician for the traffic signal upgrades along US Hwy 90 in Hancock county to incorporate positive left turn offsets and FYA capabilities. The project also includes ITS infrastructure including fiber optic interconnected traffic signals and three direct message signs.



GEORGE MERCIER

SENIOR CADD TECHNICIAN

george.mercier@ticeeng.com

EDUCATION

Computer Aided Drafting and Design 1990
Northeast Junior College, Booneville, Mississippi

PROFESSIONAL HISTORY

Senior CADD Technician January 2014 - Present
Tice Engineering Incorporated, Wiggins, Mississippi

Drafter / Designer 2012 – 2013
Diversitech, Incorporated, Stennis Space Center, Mississippi

Crew Chief / Drafter / Designer 2005-2006 / 2008-2012
Knesal Engineering, Incorporated, Gulfport, Mississippi

Project Designer / Coordinator 2006 – 2008
Tellus Development, LTD, Gulfport, Mississippi

PROFESSIONAL EXPERIENCE

SENIOR CADD TECHNICIAN

MISSISSIPPI DEPARTMENT OF TRANSPORTATION

Realignment and Signalization of MS Highway 42 at US Highway 49

Forrest County, Mississippi

Senior CADD Technician for topographic and boundary surveys and property map of the project area for use in design of the new 49/42 intersection. Project included Topographic and boundary surveys and property map, realignment of MS Hwy 42 to remove existing skew including all roadway design aspects.

SENIOR CADD TECHNICIAN

MISSISSIPPI DEPARTMENT OF TRANSPORTATION

Roadway Safety Audit along Hwy 45

Clarke & Wayne Counties, Mississippi

Senior CADD Technician for a Roadway Safety Audit (RSA) along Highway 45 in Clarke and Wayne Counties, Mississippi. The project included an analysis of crash data, accident reports, traffic studies, and site visits to develop safety improvements along the study area. Safety improvement recommendations will be reviewed and implemented by the Mississippi Department of Transportation, as funding permits, to prevent future crashes in areas identified by the RSA.

AREA OF EXPERTISE

- CIVIL SITE DESIGN / INSPECTION
- HYDROGRAPHIC SURVEY
- SURFACE MODELING
- SOLID MODELING / CNC
- MACHINE CONTROL

YEARS OF EXPERIENCE

Tice Engineering, Inc., 6 years
Other Firm, 15 years

PROFESSIONAL CERTIFICATIONS

Autocad Civil 3D Software Certification

Trimble Business Center Software Certification

Hypack Software Certification - Advanced Volumes Calculations

Certification - Computer Network Administration

OFFICE LOCATION

510 South Vardaman Street
Wiggins, MS 39577
Office: 601.928.4121
www.ticeeng.com



Find Licensee

Contact Us

Firm Details

Firm Name: Tice Engineering, Inc.
Address: 510 S. Vardaman Street
Wiggins MS 39577
County: Stone
Phone: 601-928-4121

License Type: Certificate of Authority (Engineering)
License Number: 2597
Expires on: 12/31/2020
Designated Licensee: Mr. William Ryan Tice (PE-15169)

License Type: Certificate of Authority (Surveying)
License Number: 484
Expires on: 12/31/2020
Designated Licensee: John Colter Ratliff (PS-3008)

<< Back to Search

Print



Find Licensee

Contact Us

Licensee Details

Name: Mr. William Ryan Tice
Address: 510 South Vardaman Street
Wiggins MS 39577
County: Stone
Phone: 601-928-4121
Employer: Tice Engineering, Inc

License Type: Professional Engineer
License Number: 15169
Expires on: 12/31/2020

<< Back to Search

Print



DELBERT HOSEMANN
Secretary of State

Office of the Secretary of State
Jackson, Mississippi

Certificate of Good Standing

I, C. DELBERT HOSEMANN, JR., Secretary of State of the State of Mississippi, and as such, the legal custodian of the records as required by the laws of Mississippi, to be filed in my office, do hereby certify:

That on the 4th day of March, 2009, the State of Mississippi issued a Charter/ Certificate of Authority to:

TICE ENGINEERING INC

That the state of incorporation is Mississippi.

That the period of duration is perpetual.

That according to the records of this office, Articles of Dissolution or a Certificate of Withdrawal have not been filed.

That according to the records of this office, a current Annual Report has been delivered to the Office of the Secretary of State.

I further certify that all fees, taxes and penalties owed to this state, as reflected in the records of the Secretary of State, have been paid and that the corporation is in existence or has authority to transact business in Mississippi.

That insofar as the records of this office are concerned, the said TICE ENGINEERING INC is in good standing at this time.

Given under my hand and seal of office
the 13th day of November, 2019

Handwritten signature of C. Delbert Hosemann, Jr. in cursive script.

C. DELBERT HOSEMANN, JR.
Secretary of State

Certificate Number: CN19073668

Verify this certificate online at <http://corp.sos.ms.gov/corpcnv/verifycertificate.aspx>

Tice Engineering, Inc.
510 South Vardaman Street
Wiggins, MS 39577
601.928.4121

ryan.tice@ticeeng.com
www.ticeeng.com
Contact Representative:
W. Ryan Tice, P.E.



Proposal

Engineering Services

Be with a company that focuses on building relationships. Find out what is the difference between us and our market competitors.

Prepared for:

Gulf Regional Planning Commission (GRPC)
1635 Popp's Ferry Road
Suite G
Biloxi, MS 39532

Proposal Issued:

*Friday,
June 19, 2020*

Statement of Confidentiality:

This proposal and supporting materials contain confidential and proprietary business information of Tice Engineering, Inc. These materials may be printed or photocopied for use in evaluating the proposal project, but are not to be shared with other parties.