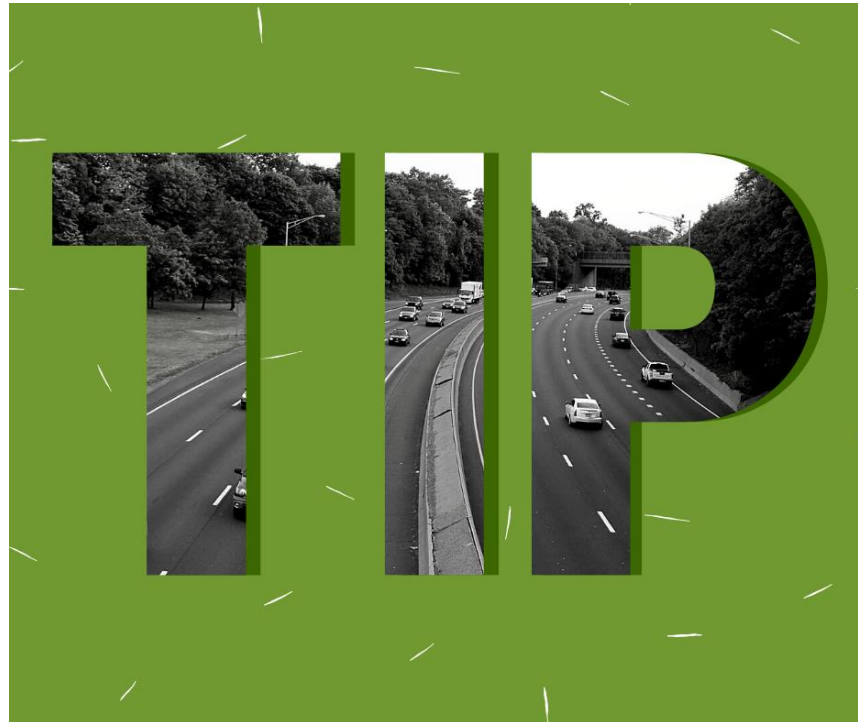


Mississippi Gulf Coast
Metropolitan Planning Organization
Transportation Improvement Program



FY 2021- 2024

August 2021

NON-DISCRIMINATION NOTIFICATION:

GRPC prohibits discrimination in all of its programs, services and activities. Public participation is solicited without regard to race, color, national origin, age, sex, religion, disability, or other protected status.

NOTATION OF FINANCIAL ASSISTANCE:

The preparation of this document has been financed in part through grants from the United States Department of Transportation, Federal Highway Administration, the Federal Transit Administration, and the Mississippi Department of Transportation. It was prepared as tasked in the Mississippi Gulf Coast MPO's FY 19-20 Unified Planning Work Program Task A-4.

TRANSIT PROGRAM OF PROJECTS:

Also listed in this document is Coast Transit Authority's Program of Projects that are funded by the Federal Transit Administration. The public meetings/comment period will satisfy the public participation requirements for the FTA Section 5307 and 5309 POP notice.

THE GULF COAST MPO

The Metropolitan Planning Organization (MPO) is a federally mandated planning body responsible for coordinating transportation programs in US Census designated urbanized areas. The Gulf Regional Planning Commission (GRPC) serves as the MPO for the Mississippi Gulf Coast and is the lead agency responsible for developing and administering plans and activities required to maintain eligibility and receive federal funds for the transportation systems in Hancock, Harrison and Jackson counties. The primary mission of the MPO is to develop and maintain a transportation planning process that is compliant with federal and state requirements and supports the development and enhancement of sustainable multimodal facilities, programs and systems in the Mississippi Gulf Coast area. The Transportation Improvement Program (TIP) is one of the most important products of the MPO's planning process.

THE TIP

The Transportation Improvement Program (TIP) is a financially constrained program developed through an on-going planning process for addressing short-term transportation priorities that are consistent with the MS Gulf Coast's Metropolitan Transportation Plan (MTP), the long-range transportation plan for our region. The TIP is developed and approved by the MPO and is included, without modification, in the Statewide Transportation Improvement Program (STIP) following approval by the Governor. The TIP can be amended by approval of the MPO policy committee. The Gulf Coast MPO allocates Surface Transportation Block Grant (STBG) and Transportation Alternative (TA) funds through TIP policies and processes described in the *MPO Handbook and Prospectus*.

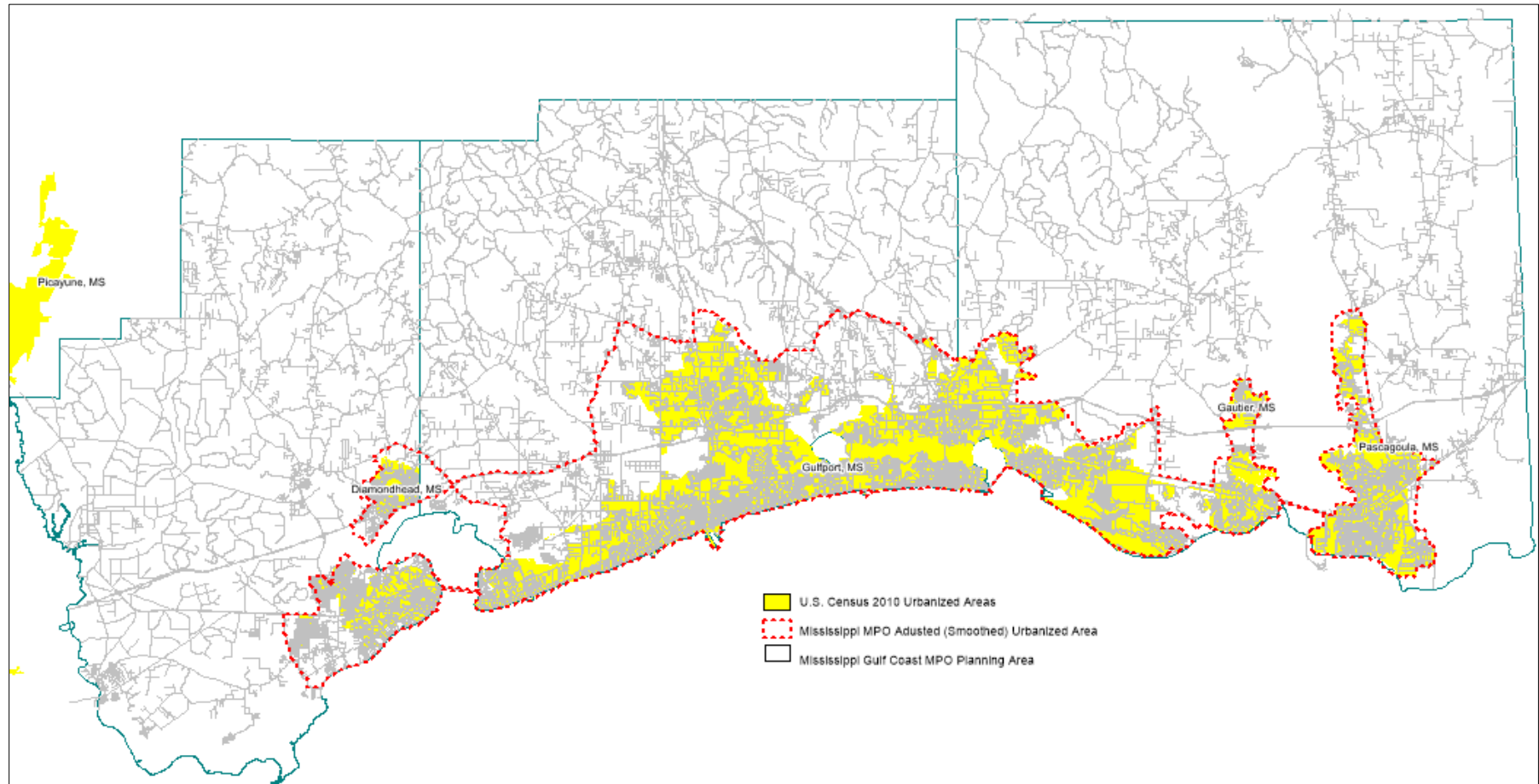
The Gulf Coast TIP identifies timing and funding of all federally funded transportation projects scheduled for implementation in the three coastal counties over a four-year period. The TIP identifies funding amounts, source of funds, project sponsor, type of project and year of funding for each project. All projects in the TIP must be consistent with goals and projects identified in the area's Metropolitan Transportation Plan. The TIP development process allows for public involvement at various points including public meetings where proposed projects are presented and discussed. Specific policies for public review are included in the MPO's *Public Participation Plan*.

The TIP development process occurs every two years, however the MPO provides opportunities to revise the projects in the TIP. Two types of changes include "amendment" and "administrative modification" depending on the level of change being made to the project. An amendment is a revision being made to the scope, termini, removal of a project or addition of a project. A modification is considered a minor revision to the TIP or STIP including the MS Gulf Coast MPO 20% maximum cost increase to a project. Specific policies for TIP changes are included in the *MPO Handbook and Prospectus*.

GULF COAST PLANNING AREA

The Mississippi Gulf Coast Planning Area encompasses three counties in which are located 12 municipalities: Waveland, Bay St. Louis and Diamondhead in Hancock County; Pass Christian, Long Beach, Gulfport, Biloxi and D'Iberville in Harrison County; and Ocean Springs, Gautier, Pascagoula and Moss Point in Jackson County. There are two distinct urbanized areas within the planning area: the Gulfport Urbanized Area (UZA) which stretches from Bay Saint Louis to Ocean Springs and includes portions of all three coastal counties; and the Pascagoula UZA located in the eastern half of Jackson County.

Figure 1: MS Gulf Coast TIP coverage area



NATIONAL GOAL AND EMPHSIS AREAS

The TIP development process reflects the priorities and direction of the region guided by MPO Planning Factors. The MPO considers projects that will address the planning factors presented in Table 1 below.

Table 1: Planning Factors

- Economic Vitality - Support the economic vitality of the metropolitan area, especially by enabling global competitiveness, productivity, and efficiency
- Safety - Increase the safety of the transportation system for motorized and non-motorized users
- Security - Increase the security of the transportation system for motorized and non-motorized users
- Mobility & Accessibility - Increase the accessibility and mobility of people and for freight
- Environment - Protect and enhance the environment, promote energy conservation, improve the quality of life, and promote consistency between transportation improvements and State and local planned growth and economic development patterns
- Multimodal Connectivity - Enhance the integration and connectivity of the transportation system, across and between modes, for people and freight
- Operations - Promote efficient system management and operation
- Preservation - Emphasize the preservation of the existing transportation system
- Reliability & Resiliency - Improving transportation system resiliency and reliability
- Storm water - Reducing (or mitigating) the stormwater impacts of surface transportation
- Tourism - Enhancing travel and tourism

TIP INVESTMENT STRATEGY

The Gulf Coast TIP process places emphasis on the development of specific project types through project categories referred to as “groups”. The TIP groups influence how federal transportation funds are spent through earmarking a portion of these funds to support specific areas. Funding groups encourage the use of STBG funds for smaller, quicker-implementation projects, encourage investment in priority focus areas, control amount of funding in an area and expedite project delivery and being more responsive to needs by not requiring a TIP amendment for each project. Groups approved by the MPO Policy Committee and used for the FY 2021-2024 TIP include Bicycle/Pedestrian, Preservation, Intelligent Transportation, Studies and Safety.

TIP PROJECT EVALUATION AND PRIORITIZATION

Given the fiscal realities of today and tomorrow with demands for budget reductions at all levels of national, state, and local government, decisions on where and how to spend the Mississippi Gulf Coast MPO’s allocation of STBG transportation funds should

not be taken lightly. To ensure that the most beneficial projects are implemented, a project prioritization process is used. The criteria used are based on federal goals, emphasis areas and performance measures for the MPO. Projects are evaluated by MPO staff and prioritized as needed to achieve performance targets and link investment decisions to goals.

PERFORMANCE MANAGEMENT

In 2012, the transportation MAP-21 was developed with the intent of creating a streamlined, performance-based, multimodal program. MAP-21 increased the accountability and transparency of Federal highway programs by improving transportation investment decision-making through performance-based planning and programming. Performance measurement provides the MPO with a better ability to identify and mitigate issues with their respective transportation networks. The 2015 FAST Act continues MAP-21's overall performance approach and ensures that State DOT's and MPO's invest in projects that collectively make progress toward the National Goals that were established by Congress.

Table 2: Performance Goals

- Safety - To achieve a significant reduction in traffic fatalities and serious injuries on all public roads
- Infrastructure condition - To maintain the highway infrastructure asset system in a state of good repair
- Congestion reduction - To achieve a significant reduction in congestion on the National Highway System
- System reliability - To improve the efficiency of the surface transportation system
- Freight movement and economic vitality - To improve the national freight network, strengthen the ability of rural communities to access national and international trade markets, and support regional economic development
- Environmental sustainability - To enhance the performance of the transportation system while protecting and enhancing the natural environment
- Reduced project delivery delays - To reduce project costs, promote jobs and the economy, and expedite the movement of people and goods by accelerating project completion through eliminating delays in the project development and delivery process, including reducing regulatory burdens and improving agencies' work practices

The MPO, MDOT and CTA cooperatively develop and sharing information related to transportation performance data, the selection of performance targets, the reporting of performance targets, the reporting of performance to be used in tracking progress toward attainment of critical outcomes for the region of the MPO. The MPO will support CTA's State of Good Repair targets by programming capital improvement transit projects in the MTP and TIP. The MPO collaborates with MDOT on Safety, pavement and bridge, system performance and freight performance by reviewing STIP and TIP project to assess their impacts and identifying projects from MPO planning to support the measures. This TIP was developed in consideration of the established performance measures and targets. As

required under current the most recent transportation act, the Gulf Coast MPO will establish performance targets, and track progress towards target achievement, for the following performance measures except as noted:

Table 3: Performance Measures

<p style="text-align: center;"><u>Safety</u></p> <ul style="list-style-type: none"> • Total number of traffic related fatalities on all public roads. • Rate of traffic related fatalities on all public roads per 100 million VMT. • Total number of traffic related serious injuries on all public roads. • Rate of traffic related serious injuries on all public roads per 100 million VMT. • Total number of non-motorized fatalities and serious injuries on all public roads. <p style="text-align: center;"><u>Pavement Condition</u></p> <ul style="list-style-type: none"> • Percentage of pavements on the Interstate System in Good condition. • Percentage of pavements on the Interstate System in Poor condition. • Percentage of the non-interstate National Highway System in Good condition. • Percentage of the non-interstate National Highway System in Poor condition. <p style="text-align: center;"><u>Bridge Condition</u></p> <ul style="list-style-type: none"> • Percentage of National Highway System bridges classified as in Good condition. • Percentage of National Highway System bridges classified as in Poor condition. 	<p style="text-align: center;"><u>NHS Travel Time Reliability</u></p> <ul style="list-style-type: none"> • Percent of the Person-Miles Traveled on the Interstate that are reliable. • Percent of the Person Miles Traveled on the Non-Interstate National Highway System that are reliable. <p style="text-align: center;"><u>Freight Reliability</u></p> <ul style="list-style-type: none"> • Percentage of Interstate System mileage providing reliable truck travel time. <p style="text-align: center;"><u>Traffic Congestion</u></p> <ul style="list-style-type: none"> • Annual hours of peak hour excessive delay per capita. * • Percentage of Non-Single Occupancy Vehicle Travel. * <p style="text-align: center;"><u>Total Emissions Reduction</u></p> <ul style="list-style-type: none"> • Total emissions reductions by applicable pollutants under the CMAQ program. * <p style="text-align: center;"><u>Transit State of Good Repair</u></p> <ul style="list-style-type: none"> • Equipment • Rolling Stock • Infrastructure • Facilities <p><i>*not required for Gulf Coast MPO</i></p>
---	--

LINKING THE TIP

The MPO will continue to coordinate with MDOT and other stakeholders through the development of the TIP to support regional goals, objectives, and targets, to the maximum extent practicable. The Gulf Coast MPO recognizes the importance of linking its investment priorities with national goals. The Gulf Coast TIP investment strategy and project evaluation and prioritization processes are used to help achieve performance targets for each goal. The table below shows how MPO uses the TIP to advance national goals and planning emphasis areas and performance measures set by Federal Highway Administration (FHWA):

MAP-21 National Goal	FAST Act National Planning Emphasis Area	TIP Investment Strategy	TIP Project Evaluation and Prioritization Criteria	Performance Measures
Infrastructure Condition	Emphasize the preservation of the existing transportation system	<ul style="list-style-type: none"> Multimodal Program Preservation Group 	<ul style="list-style-type: none"> PASER Bridge Sufficiency Rating 	Pavement Condition. Percentage (%) of pavements of the Interstate System in Good Condition
				Pavement Condition. Percentage (%) of pavements of the Interstate System in Poor Condition
				Pavement Condition. Percentage (%) of pavements of the Non-Interstate NHS in Good Condition
				Pavement Condition. Percentage (%) of pavements of the Non-Interstate NHS in Poor Condition
				Bridge Condition. Percentage (%) of NHS bridges classified as in Good Condition
				Bridge Condition Percentage (%) of NHS bridges classified as in Poor Condition
Safety	Increase the safety of the transportation system for motorized and non-motorized users Increase the security of the transportation system for motorized and non-motorized users	<ul style="list-style-type: none"> Multimodal Program Safety Group Bike-Ped-Transit Group 	<ul style="list-style-type: none"> Safety 	Safety. Number of Fatalities on all public roads
				Safety. Rate of Fatalities per 100 Million Vehicle Miles Traveled
				Safety. Number of Serious Injuries on all public roads
				Safety. Rate of Serious Injuries per 100 Million VMT
				Safety. Number of Non-motorized Fatalities and Serious Injuries on all public roads
Congestion Reduction	Promote efficient system management and operation	<ul style="list-style-type: none"> Multimodal Program 	<ul style="list-style-type: none"> Mobility 	Traffic Congestion. Annual Hours of Peak Hour Excessive Delay Per Capita*
				Traffic Congestion. Percentage (%) of Non-Single Occupancy Vehicle Travel*

MAP-21 National Goal	FAST Act National Planning Emphasis Area	TIP Investment Strategy	TIP Project Evaluation and Prioritization Criteria	Performance Measures
Environmental Sustainability	Improve resiliency and reliability of the transportation system and reduce or mitigate storm water impacts of surface transportation	<ul style="list-style-type: none"> Multimodal Program 	<ul style="list-style-type: none"> Regional Impact Resilience Connectivity 	Total Emission Reductions*
	Protect and enhance the environment, promote energy, conservation, improve quality of life, and promote consistency between transportation improvements and State and local planned growth and economic development patterns			
	Increase the accessibility and mobility of people and for freight			
Economic Vitality/Freight Movement	Support the economic vitality of the metropolitan area, especially by enabling global competitiveness, productivity, and efficiency	<ul style="list-style-type: none"> Multimodal Program ITS Group 	<ul style="list-style-type: none"> Economic Vitality Connectivity 	Freight Reliability. Percentage of interstate system providing reliable truck travel time. Truck Travel Time Reliability Index (TTTR)
	Increase the accessibility and mobility of people and for freight			
System Reliability		<ul style="list-style-type: none"> Multimodal Program 	<ul style="list-style-type: none"> Mobility 	Travel Time Reliability. Percent (%) of the Person-Miles Traveled on the Interstate that are reliable - Level of Travel Time Reliability (LOTTR)
				Travel Time Reliability. Percent (%) of the Person Miles Traveled on the Non-Interstate NHS that are reliable - Level of Travel Time Reliability (LOTTR)
Reduced Project Delivery Delays		<ul style="list-style-type: none"> Studies 	<ul style="list-style-type: none"> Project Readiness 	

*Not required for Mississippi Gulf Coast MPO

FISCAL CONSTRAINT

Federal regulations require that financial constraint of the Transportation Improvement Program (TIP) be demonstrated and maintained by year and shall include sufficient financial information to determine which projects are to be implemented using current and/or reasonably available revenues. The MPO will use the figures below to develop their fiscal constraint for the STBG and TAP funds for the planning area.

Congress passes a new *Transportation Bill* approximately every four to six years, the latest of which is entitled the *Fixing America's Surface Transportation Act (FAST)*. The Transportation Bill authorizes to each state a certain amount for each funding category (STBG, TAP, etc.) for the federal fiscal years it covers. These authorizations are based on the funds expected to be available in the Highway Trust Fund. Congress then passes an *Appropriation Bill* near the beginning of each year that establishes the exact amounts that the states can actually spend in their highway program. The appropriation bill establishes a certain percentage of the total authorization for the states, which is referred to as an *Obligation Limitation*. MDOT suballocates STBG funds to its urbanized areas with over 200,000 in population (Gulfport, UZA) and must make obligation limitation available based on the criteria set forth in 23 U.S.C. 133(e). MDOT makes available 100% of the Gulfport UZA suballocation obligation limitation for each fiscal year to actually spend.

ILLUSTRATIVE PROJECT LIST

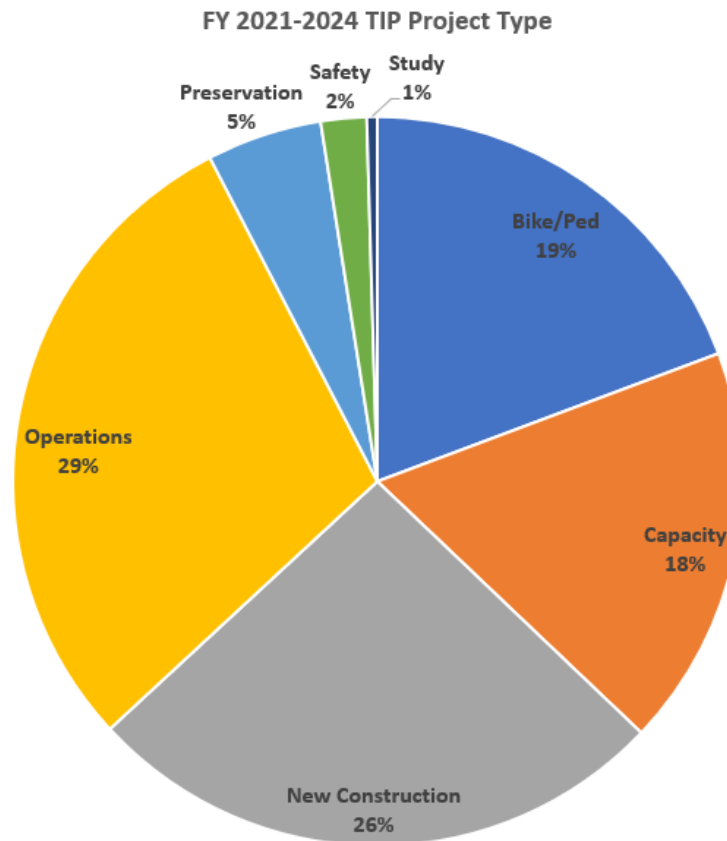
Per CFR 450.326, an “Illustrative Project List” will be used for illustrative purposes, to include additional projects that would be included in the TIP if reasonable additional resources beyond those identified in the financial plan were to become available. Projects moved between the financial plan and this list will be performed using administrative modification procedures.

TRANSIT PROGRAM OF PROJECTS

The Program of Projects (POP) reflects the Gulf Coast’s federally supported transit projects over the next four fiscal years. The POP is consistent with the Metropolitan Transportation Plan (MTP) which implements regionally significant transit projects. The TIP lists each of FTA programs, the program funding sub-allocations, the government funding participation all which is identified by an ARC identification number. Notice for review of the POP is conducted by the MPO simultaneously with amendments and updates to the TIP. Public notice given is as follows: *“Also listed in this document is Coast Transit Authority's Program of Projects that are funded by the Federal Transit Administration. The public meetings/comment period will satisfy the public participation requirements for the FTA Section 5307 and 5309 POP notice. The proposed CTA Program of projects will be final unless revised as a result of public comment.”*

PROGRAMMED TIP PROJECT TYPE

The primary mission of the MPO is to collaboratively plan, prioritize and fund the delivery of various transportation projects. Every two years, decisions are made on how to spend the MPO's annual allocation of approximately \$6 million in STBG funding to improve transportation infrastructure region. Funding groups, project evaluation criteria and scoring processes are established to direct funding to the MPO priorities. As shown on the graph below, operations projects are heavily represented in the percent of available funds. This is because the evaluation and scoring criteria are weighted toward lower cost projects that improve traffic flow and safety. Bicycle and pedestrian projects have a significant amount of funding. This is because the MPO has had a Bicycle/Pedestrian Group set aside established for many years which encourage the submittal of sidewalk and pathway projects.



PUBLIC REVIEW

GRPC developed the FY2021-2024 Transportation Improvement Plan in 2020 and opened the public comment period from June 19, 2020, to August 5, 2020. It is our goal to allow for public and transportation stakeholders to have a reasonable opportunity to be involved in planning and program activities. Our Public Participation Plan outlines the policies and procedures that we must follow to ensure that we are effectively reaching the communities that we serve as well as observing federal policies.

Due to COVID 19 and the restrictions on indoor gatherings, we were unable to host any in-person events for the TIP 2020. We had to rely heavily on online interactions and other forms of remote communication like street signs and newspaper advertisements. GRPC partnered with MDOT to post the notice for public comment in our local newspapers, the Sun Herald and the Sea Coast Echo, as well as five social media ads during the required 45-day comment period. This ad ran as follows: Sea Coast Echo June 24, Sun Herald June 21, July 5, July 19, August 2



Gulf Regional
Planning Commission

MDOT and GRPC Seeks Public Comments for Statewide Transportation Improvement Program

The Mississippi Department of Transportation (MDOT) and the Gulf Regional Planning Commission (GRPC) are hosting a 45-day comment period to allow citizens to review and comment on the draft Statewide Transportation Improvement Program (STIP) and the draft local Transportation Improvement Program (TIP). The comment period will begin June 19, 2020 and end August 5, 2020.

The STIP is available for review and comment at www.gomdot.com. The public is invited to submit comments to the MDOT by mail, phone, email, or electronic submission. Your comments, thoughts, and suggestions concerning specific transportation needs will be recorded and evaluated as part of the state planning process.

If you need assistance locating an electronic copy or making a comment, contact MDOT at (601) 359-7685 or email planning@mdot.ms.gov.

WAYS TO COMMENT:

Mail: Mississippi Department of Transportation
P.O. Box 1850
Jackson, MS 39215
STIP Draft: www.gomdot.com

Contact: Lindsey Killebrew
Phone: (601) 359-7685
Email: planning@mdot.ms.gov

Mail: Gulf Regional Planning Commission
1635 Popps Ferry Road, Suite G
Biloxi, MS 39532
TIP Draft: www.grpc.com

Contact: Kenneth Yarrow
Phone: (228) 864-1167
Email: kyarrow@grpc.com
Facebook: <https://www.facebook.com/GulfRegionalPlanning>

SOCIAL MEDIA

GRPC also conducted a social media campaign to attempt to reach the community. The social media campaign included a total of five graphics posted numerous times to both Facebook and Twitter, as well as two Facebook stories. Facebook was chosen as our primary platform for virtual outreach because it is simple to use, and this method has a high probability of reaching a variety of people that is required for meaningful outreach. During our social media campaign, some of the five graphics were posted multiple times, totaling eight posts in all. According to Facebook analytics, our post reached an average of 173 people per post, but only maintained an average of 22 reactions per post. Most of the interactions with the Facebook posts were clicks and likes with only a few but positive comments. Examples of the graphics that were posted are shown below.

Even though our online efforts did result in some interactions from the public, there is still a lot of work that needs to be done to ensure that there is meaningful, comprehensive outreach across the region. Navigating the public participation process in a post-COVID 19 society has proven difficult, and GRPC will adapt our efforts to ensure that the public's input will be heard and incorporated into the planning process. For our next projects, GRPC will incorporate different methods to gain more impactful interactions from the public online, without the use of in-person public meetings.



TARGETED OUTREACH

In addition to the outreach that was facilitated with MDOT, GRPC also conducted additional advertisements for our local TIP projects. GRPC acquired ten road signs and placed them in Environmental Justice areas where a new project was proposed. These signs were set to try to reach people that were living, working, or playing in the areas where a project was proposed. From the signs, people with questions or comments about the projects were directed to our website and Facebook page to make their suggestions. The proof of the sign and an in-field example is shown below.



Mississippi Gulf Coast TIP: Estimated Funding for FY2021-2024

FY2021 Estimate	Funding Source	Carryover	Federal	Local	Total
	TMA	\$0	\$4,577,372	\$1,144,343	\$5,721,715
	Non Urban	\$0	\$778,331	\$194,583	\$972,914
	Transportation Alternatives	\$0	\$346,352	\$86,588	\$432,940
	Safety Group	\$0	\$500,000	\$100,000	\$500,000
	Studies/Projects Group	\$0	\$500,000	\$125,000	\$625,000
	Highway Infrastructure Program	\$371,402	\$0	\$92,851	\$464,253
FY2022 Estimate	Funding Source	Carryover	Federal	Local	Total
	TMA		\$4,688,920	\$1,172,230	\$5,861,150
	Non Urban		\$778,331	\$194,583	\$972,914
	Transportation Alternatives		\$353,279	\$88,320	\$441,599
	Safety Group		\$500,000	\$100,000	\$500,000
	Studies/Projects Group		\$500,000	\$125,000	\$625,000
	Highway Infrastructure Program		\$0	\$0	\$0
FY2023 Estimate	Funding Source	Carryover			
	TMA		\$4,802,698	\$1,200,675	\$6,003,373
	Non Urban		\$778,331	\$194,583	\$972,914
	Transportation Alternatives		\$360,345	\$90,086	\$450,431
	Safety Group		\$500,000	\$100,000	\$500,000
	Studies/Projects Group		\$500,000	\$125,000	\$625,000
	Highway Infrastructure Program		\$0	\$0	\$0
FY2024 Estimate	Funding Source	Carryover			
	TMA		\$4,918,752	\$1,229,688	\$6,148,440
	Non Urban		\$778,331	\$194,583	\$972,914
	Transportation Alternatives		\$367,552	\$91,888	\$459,440
	Safety Group		\$500,000	\$100,000	\$500,000
	Studies/Projects Group		\$500,000	\$125,000	\$625,000
	Highway Infrastructure Program		\$0	\$0	\$0

NOTE: Funding estimates are based on the reasonable expectation of continued funding for all federally supported programs.

PROJECTS FOR FY 2021

Jurisdiction	Project	Termini	Type	Federal Share	TMA	Non-Urban	TAP	Safety	Studies	HIPF
*Gulfport	Seaway Rd Seperated Path	Three Rivers to Hwy 605	Cost Increase	\$160,000	\$160,000					
*Gulfport	US 90	20th Ave	Cost Increase	\$100,000	\$100,000					
Gautier	Railroad Crossing Overpass		Study	\$56,888					\$56,888	
Biloxi	Atkinson Road		Study	\$15,000					\$15,000	
Long Beach	Beatline Parkway		Study	\$150,000					\$150,000	
Long Beach	5 Points Intersection		Study	\$96,000					\$96,000	
Biloxi	Point Cadet Improvements		Study	\$30,000					\$30,000	
Ocean Springs	Downtown Parking Study		Study	\$40,000					\$40,000	
Bay St. Louis	City ADA Improvements		Study	\$28,000					\$28,000	
Jackson County	Hwy 609		Study	\$112,579					\$112,579	
Gulfport	Pavement Management		Study	\$80,000					\$80,000	
Ocean Springs	OS Road / Steelman Road		Study	\$48,000					\$48,000	
GRPC	PH II Safety Projects. CON		Safety	\$1,000,000				\$1,000,000		
Bay St Louis	Washington Street Sidewalks	Old Spanish Trail to St Francis Street	Bike/Ped	\$120,000	\$120,000					
*Gulfport	Landon Road	US 49 to 34th Avenue	Capacity	\$2,952,000	\$2,952,000					
*Gautier	Martin Bluff Road	Gautier-Vancleave Road to Frontage Road	Operations	\$3,106,076	\$885,671	\$778,331				\$1,442,074
Ocean Springs	East Beach Dr. Pathway	Holcomb Boulevard to Halstead Road	Bike/Ped	\$384,000	\$384,000					
Diamondhead	Montjoy Creek Pathway	Diamondhead Drive to Rotten Bayou	Bike/Ped	\$80,000			\$80,000			
Pass Christian	North Street	Pass Christian HS to Pass Estates	Bike/Ped	\$452,800	\$452,800					
Diberville	Mallet Road & Lamey Bridge Road		Study	\$80,000					\$80,000	
*Biloxi	Main St RR Crossing	Main St @ CSX	Safety	\$130,000	\$130,000					
GRPC	TSP project.CON	Biloxi and Gulfport Signals	Technology	\$500,000				\$500,000		
Hancock County	Washington Street ADA Beach Access	Washington Street Pier	Bike/Ped	\$240,000			\$240,000			
Bay St Louis	Beyer Street Sidewalks	Carroll Ave to Ranch Street	Bike/Ped	\$280,000			\$280,000			
Gautier	Martin Bluff Road	Gautier-Vancleave Road to Martin Bluff Elem	Bike/Ped	\$720,000		\$720,000				
Port at Gulfport	Gulfport traffic	US 49, 30th Avenue, 28th Street	Technology	\$200,000	\$200,000					
TOTAL				\$11,161,343	\$5,384,471	\$1,498,331	\$600,000	\$1,500,000	\$736,467	\$1,442,074

PROJECTS FOR FY 2022

Jurisdiction	Project	Termini	Type	Federal Share	TMA	Non-Urban	TAP	Safety	Studies
Long Beach	Klondyke Road	Commission Road	Intersection	\$760,000	\$760,000				
Long Beach	Pineville Road Sidewalks PH II	Harper McCaughan to Klondyke Road	Bike/Ped	\$400,000	\$400,000				
Gulfport	Old Hwy 49 Sidewalk	Robinson Road to Dedeaux Road	Bike/Ped	\$160,000			\$160,000		
Waveland	St. Joseph Street	Herlihy Street, Old Spanish Trail	Bike/Ped	\$500,000			\$500,000		
Ocean Springs	Hanshaw Road	Cabildo Place	Bike/Ped	\$82,680			\$82,680		
Bay St Louis	Pine Street	Bay High School	Bike/Ped	\$140,000			\$140,000		
Pascagoula	US 90	Pascagoula Street to Industrial Road exit	Safety	\$1,021,913		\$1,021,913			
Ocean Springs	Ocean Springs Road	US 90 to Culeoka Drive and Groveland Road	Operations/Int.	\$3,390,830	\$3,390,830				
Diberville	Brodie Road	at Automall Parkway	Intersection	\$432,000	\$432,000				
Jackson County	Lemoyne Boulevard	McCann Road to 3300 feet east	Bike/Ped	\$262,151	\$262,151				
Hancock County	Lakeshore Road	Beach Road to Lower Bay Road	Preservation	\$480,000	\$480,000				
Harrison County	Bethel/Success Road	US 49 to Success Road and Bethel Road to Hwy 49	Preservation	\$471,200	\$471,200				
TOTAL				\$8,100,774	\$6,196,181	\$1,021,913	\$882,680	\$0	\$0

PROJECTS FOR FY 2023

Jurisdiction	Project	Termini	Type	Federal Share	TMA	Non-Urban	TAP	Safety	Studies
Biloxi	Woolmarket Road Sidewalks	Woolmarket Road & Lorraine Road	Bike/Ped	\$880,000	\$880,000				
Biloxi	Popps Ferry Raod extension (Phase I)	Pass Road to Coliseum	Capacity	\$2,163,200	\$2,163,200				
Moss Point	Macphelah Road	Jefferson Avenue	Intersection	\$921,000		\$921,000			
Harrison County	Landon Road Widening	Coleman Road to 34th Street	Capacity	\$1,360,000	\$1,360,000				
Biloxi	Cedar Lake Road Bridge	Tchouticabouffa River Bridge	Preservation	\$560,000	\$560,000				
Diamondhead	East Aloha Drive PH 2	Veterans to Kalani Drive and Kalani Drive	Bike/Ped	\$489,866			\$489,866		
Diberville	Suzanne Drive	at Automall Parkway	Intersection	\$480,000	\$480,000				
Bay St. Louis	Hwy 603	I-10 to US 90	Operations	\$180,000	\$180,000				
Long Beach	Pineville Road PH III	Seal Avenue to Railroad Street	Bike/Ped	\$600,000	\$600,000				
TOTAL				\$7,634,066	\$6,223,200	\$921,000	\$489,866	\$0	\$0

PROJECTS FOR FY 2024

Jurisdiction	Project	Termini	Type	Federal Share	TMA	Non-Urban	TAP	Safety	Studies
Gulfport	US 49	Creosote Road to Turkey Creek	Bike/Ped	\$2,162,720	\$2,162,720				
Bay St Louis	Ranch Street	Esplanade Street to Athletic Drive	Bike/Ped	\$120,000			\$120,000		
Gulfport	Dedeaux Road	Hwy 605 to Jessica Lane	Capacity	\$3,760,000	\$3,760,000				
Bay St. Louis	Old Spanish Trail	Seube Street to Main Street	Safety	\$600,000	\$600,000				
TOTAL				\$6,642,720	\$6,522,720	\$0	\$120,000	\$0	\$0

Illustrative

Jurisdiction	Project	Termini	Type	Federal Share	TMA	Non-Urban	TAP	Safety	Studies
Pass Christian	North Street Extension	Menge Avenue to Espy Avenue	Capacity	\$2,591,038	\$2,591,038				
Long Beach	28th Street	at Klondyke Road	Intersection	\$800,000	\$800,000				
D'iberville	Popps Ferry Road	Belle St. to Galleria Parkway	Capacity	\$2,938,780	\$2,938,780				
Gulfport	Airport Road	East end of 4-lane to Washington Avenue	Capacity	\$147,085	\$147,085				
Jackson County	Hwy 609 @ Old Fort Bayou Road	Old Fort Bayou Road Intersection	Operations	\$1,493,640	\$1,493,640				
TOTAL				\$7,970,543	\$7,970,543	\$0	\$0	\$0	\$0

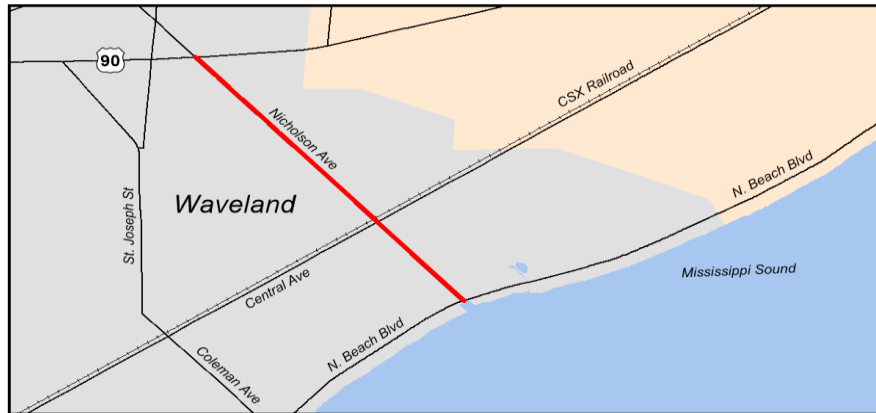
Hancock County

Mississippi Gulf Coast Metropolitan Planning Organization

FY2021-2024 Transportation Improvement Program (TIP)



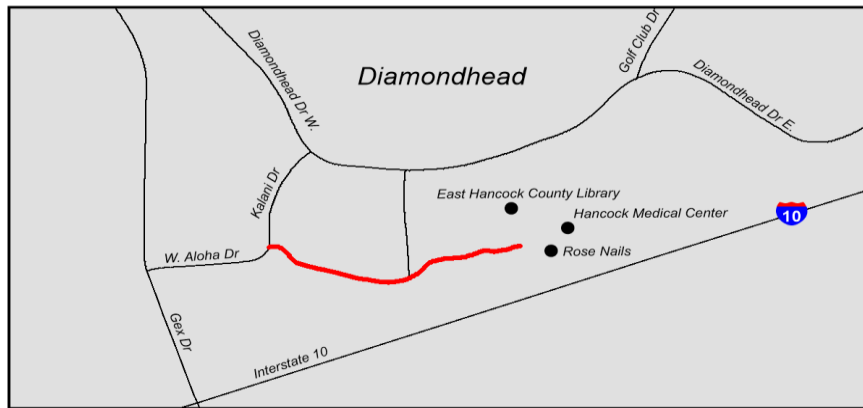
County	Hancock	Agency	Waveland
Improvement Type	Reconstruction	Route	Nicholson Avenue
Project Termini	Hwy 90 to South Beach Boulevard (1.5 miles)		
Project Description	Resurfacing and restriping roadway to include widened shoulders for bicycle and pedestrian access		



FY	Source	Phase	Federal	Match	Total
2019	TMA	CON	\$800,000	\$200,000	\$1,000,000
Project Totals			\$800,000	\$200,000	\$1,000,000

Project Notes					
Action	Add to TIP	Date	8/25/2016	Type	Amend
Remarks	\$800,000 STP				
Action	Change	Date	8/23/2018	Type	Amend
Remarks	Change Termini to Jeff Davis Ave.				
Action		Date		Type	
Remarks					
Action		Date		Type	
Remarks					
Action		Date		Type	
Remarks					
Action		Date		Type	
Remarks					
Action		Date		Type	
Remarks					
Action		Date		Type	
Remarks					

County	Hancock	Agency	Diamondhead	
Improvement Type	Reconstruction		Route	East Aloha Drive
Project Termini	Veterans Drive to Medical Park (.21 mile)			
Project Description	As part of the City's widening project, add a multiuse pathway on southside of roadway			



FY	Source	Phase	Federal	Match	Total
2019	TAP	CON	\$136,400	\$34,100	\$170,500
2020	TAP	CON	\$27,280	\$6,820	\$34,100
Project Totals			\$163,680	\$40,920	\$204,600

[illegible]

Mississippi Gulf Coast Metropolitan Planning Organization

FY2021-2024 Transportation Improvement Program (TIP)



County	Hancock County	Agency	Bay St Louis
Improvement Type	Pedestrian	Route	Washington Street
Project Termini	Old Spanish Trail to St Francis Street		
Project Description	Sidewalks		



FY	Source	Phase	Federal	Match	Total
2021	TMA	CON	\$120,000	\$30,000	\$150,000
Project Totals			\$120,000	\$30,000	\$150,000

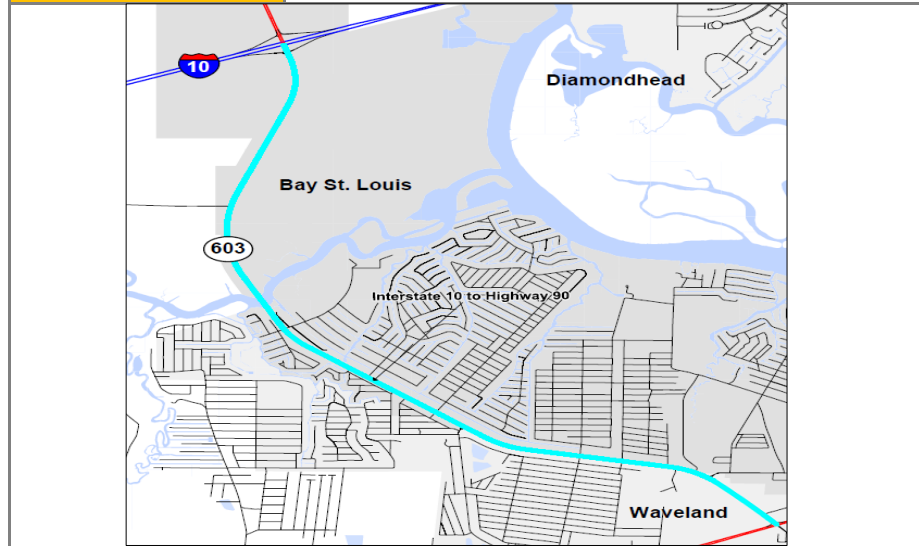
Project Notes					
Action	Add to TIP	Date	8/23/2018	Type	Amend
Remarks					
Action		Date		Type	
Remarks					
Action		Date		Type	
Remarks					
Action		Date		Type	
Remarks					
Action		Date		Type	
Remarks					
Action		Date		Type	
Remarks					
Action		Date		Type	
Remarks					

Mississippi Gulf Coast Metropolitan Planning Organization

FY2021-2024 Transportation Improvement Program (TIP)



County	Hancock	Agency	Bay St Louis
Improvement Type	Operations	Route	Highway 603
Project Termini	Interstate 10 to United States 90		
Project Description	Project will extend the length of turning lanes, improving roadway safety and traffic flow.		



FY	Source	Phase	Federal	Match	Total
2023	TMA	CON	\$180,000	\$45,000	\$225,000
Project Totals			\$180,000	\$45,000	\$225,000

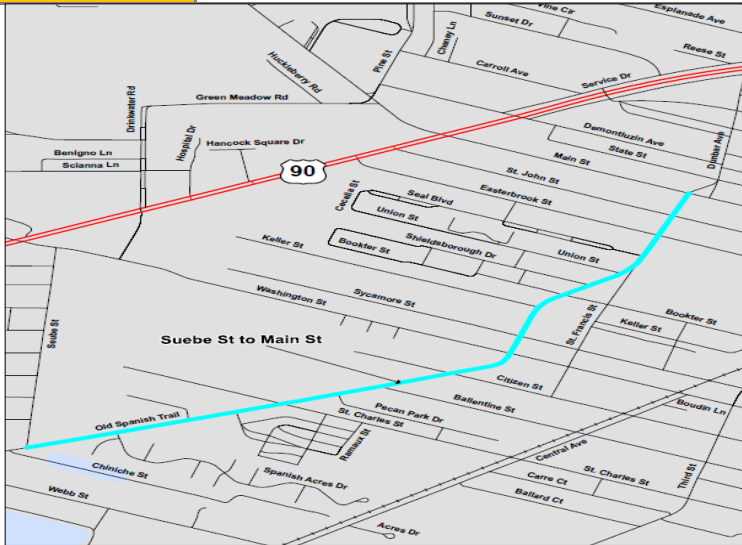
Project Notes					
Action	Add to TIP	Date	8/1/2020	Type	Amend
Remarks	\$180,000				
Action		Date		Type	
Remarks					
Action		Date		Type	
Remarks					
Action		Date		Type	
Remarks					
Action		Date		Type	
Remarks					
Action		Date		Type	
Remarks					
Action		Date		Type	
Remarks					
Action		Date		Type	
Remarks					

Mississippi Gulf Coast Metropolitan Planning Organization

FY2021-2024 Transportation Improvement Program (TIP)



County	Hancock	Agency	Bay St Louis
Improvement Type	Lighting	Route	Old Spanish Trail
Project Termini	Seube Street to Main Street		
Project Description	Project is to improve the intersection of 28th Street and Klondyke Road. A determination of improvements to signalization, additional turn lanes and the consideration of a roundabout.		



FY	Source	Phase	Federal	Match	Total
2024	TMA	CON	\$600,000	\$150,000	\$750,000
Project Totals			\$600,000	\$150,000	\$750,000

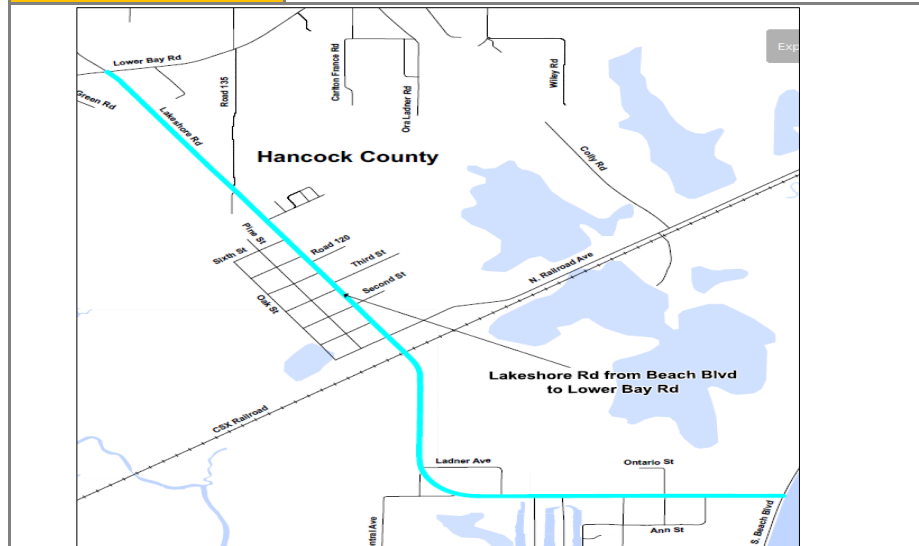
Project Notes					
Action	Add to TIP	Date	8/1/2020	Type	Amend
Remarks	\$600,000				
Action		Date		Type	
Remarks					
Action		Date		Type	
Remarks					
Action		Date		Type	
Remarks					
Action		Date		Type	
Remarks					
Action		Date		Type	
Remarks					
Action		Date		Type	
Remarks					

Mississippi Gulf Coast Metropolitan Planning Organization

FY2021-2024 Transportation Improvement Program (TIP)



County	Hancock County	Agency	Hancock County
Improvement Type	Maintenance	Route	Lakeshore Road
Project Termini	Lower Bay Road to Beach Road		
Project Description	Patching, leveling, overlay, striping and signage. Project Length: 2.3 miles		



FY	Source	Phase	Federal	Match	Total
2022	TMA	CON	\$480,000	\$120,000	\$600,000
Project Totals			\$480,000	\$120,000	\$600,000

Project Notes					
Action	Add to TIP	Date	8/1/2020	Type	Amend
Remarks	\$480,000				
Action		Date		Type	
Remarks					
Action		Date		Type	
Remarks					
Action		Date		Type	
Remarks					
Action		Date		Type	
Remarks					
Action		Date		Type	
Remarks					
Action		Date		Type	
Remarks					
Action		Date		Type	
Remarks					

Harrison County

Mississippi Gulf Coast Metropolitan Planning Organization

FY2021-2024 Transportation Improvement Program (TIP)



County	Harrison	Agency	USM- Gulf Park
Improvement Type	Bicycle/Pedestrian	Route	Gulf Park Drive
Project Termini	Bear Point to North of Hardy Hall		
Project Description	Add a new 5' sidewalk		



FY	Source	Phase	Federal	Match	Total
2020	TAP	CON	\$231,400	\$57,850	\$289,250
Project Totals			\$231,400	\$57,850	\$289,250

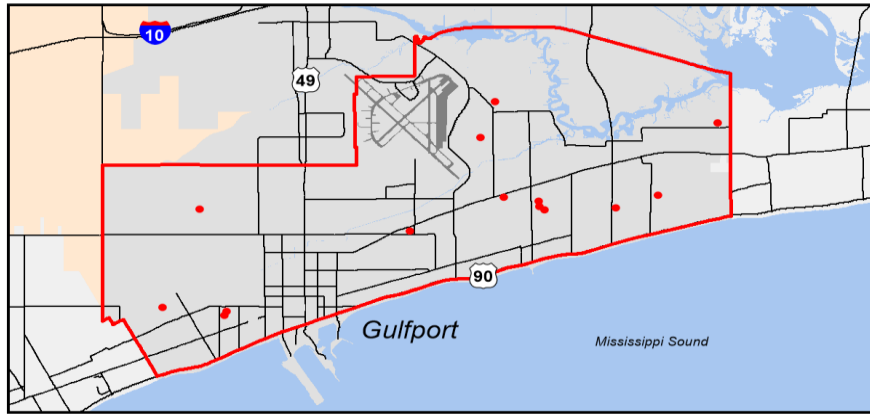
Project Notes					
Action	Add to TIP	Date	8/23/2018	Type	Amend
Remarks	\$231,400 TAP				
Action		Date		Type	
Remarks					
Action		Date		Type	
Remarks					
Action		Date		Type	
Remarks					
Action		Date		Type	
Remarks					
Action		Date		Type	
Remarks					
Action		Date		Type	
Remarks					
Action		Date		Type	
Remarks					

Mississippi Gulf Coast Metropolitan Planning Organization

FY2021-2024 Transportation Improvement Program (TIP)



County	Harrison	Agency	Gulfport
Improvement Type	Safety	Route	Various locations
Project Termini	14 Gulfport Schools		
Project Description	Update school zone signage, striping and other warning devices		



FY	Source	Phase	Federal	Match	Total
2020	TMA	CON	\$252,333	\$0	\$252,333
Project Totals			\$252,333	\$0	\$252,333

Project Notes					
Action	Add to TIP	Date	8/23/2018	Type	Amend
Remarks	\$210,278 STBG				
Action	Cost increase	Date	8/12/2020	Type	Mod
Remarks	Add \$42,056 STBG - 20%				
Action		Date		Type	
Remarks					
Action		Date		Type	
Remarks					
Action		Date		Type	
Remarks					
Action		Date		Type	
Remarks					
Action		Date		Type	
Remarks					
Action		Date		Type	
Remarks					

Mississippi Gulf Coast Metropolitan Planning Organization

FY2021-2024 Transportation Improvement Program (TIP)



County	Harrison	Agency	Biloxi
Improvement Type	Safety	Route	Main Street
Project Termini	CSX Crossing		
Project Description	Asphalt work to reduce steepness of rail crossing		



FY	Source	Phase	Federal	Match	Total
2021	TMA	CON	\$130,000	\$32,500	\$162,500
2021	TMA	RR - Dia	\$20,000	\$5,000	\$25,000
Project Totals			\$150,000	\$37,500	\$187,500

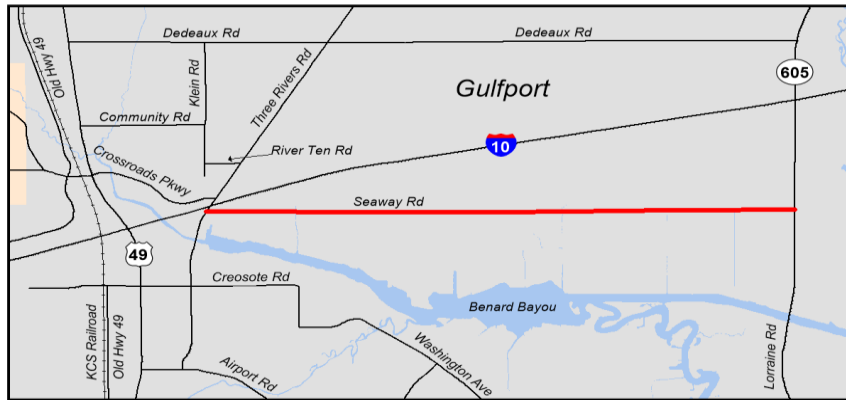
Project Notes					
Action	Add to TIP	Date	8/23/2018	Type	Amend
Remarks	\$150,000 STBG				
Action	Breakout RR Diagnostics	Date	10/20/2019	Type	Mod
Remarks	20,000 federal RR - Reduce construction from 150,000 to 130,000				
Action		Date		Type	
Remarks					
Action		Date		Type	
Remarks					
Action		Date		Type	
Remarks					
Action		Date		Type	
Remarks					
Action		Date		Type	
Remarks					
Action		Date		Type	
Remarks					

Mississippi Gulf Coast Metropolitan Planning Organization

FY2021-2024 Transportation Improvement Program (TIP)



County	Harrison	Agency	Gulfport
Improvement Type	Bike/Ped	Route	Seaway Road
Project Termini	Three Rivers Road to Hwy 605 (3.2 miles)		
Project Description	Add a multiuse pathway on the southside, the length of Seaway Road		



FY	Source	Phase	Federal	Match	Total
2018	TAP	CON	\$684,215	\$171,054	\$855,269
2018	STBG-TMA	CON	\$261,749	\$65,437	\$327,186
2020	STBG-TMA	CON	\$160,000	\$40,000	\$200,000
Project Totals			\$1,105,964	\$276,491	\$1,382,455

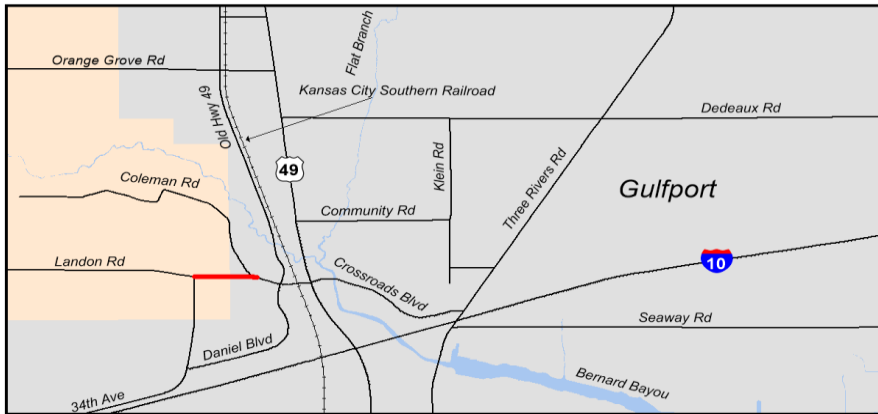
Project Notes					
Action	Add to TIP	Date	8/25/2016	Type	Amend
Remarks	\$788,304 TAP				
Action	Change Year	Date	2/23/2017	Type	Mod
Remarks	Move from FY 17 to FY18				
Action	Add Funds	Date	8/23/2018	Type	Mod
Remarks	Add \$157,660 STBG				
Action		Date		Type	
Remarks					
Action	Change Funds	Date	8/23/2018	Type	Mod
Remarks	Change Funding Source from to TAP/STBG split				
Action	Add funds	Date	6/1/2020	Type	Mod
Remarks	Increase by \$160,000				
Action		Date		Type	
Remarks					
Action		Date		Type	
Remarks					
Action		Date		Type	
Remarks					

Mississippi Gulf Coast Metropolitan Planning Organization

FY2021-2024 Transportation Improvement Program (TIP)



County	Harrison	Agency	Harrison County
Improvement Type	Capacity	Route	Landon Road
Project Termini	Coleman Road to 34th Avenue (.25 mile)		
Project Description	Connect with Gulfport project to widen and add bike/ped facilities		



FY	Source	Phase	Federal	Match	Total
2021	TMA	CON	\$1,360,000	\$340,000	\$1,700,000
Project Totals			\$1,360,000	\$340,000	\$1,700,000

Project Notes					
Action	Add to TIP	Date	8/23/2018	Type	Amend
Remarks	\$1,360,000 STBG				
Action		Date		Type	
Remarks					
Action		Date		Type	
Remarks					
Action		Date		Type	
Remarks					
Action		Date		Type	
Remarks					
Action		Date		Type	
Remarks					
Action		Date		Type	
Remarks					
Action		Date		Type	
Remarks					

Mississippi Gulf Coast Metropolitan Planning Organization

FY2021-2024 Transportation Improvement Program (TIP)



County	Harrison	Agency	City of Gulfport
Improvement Type	Capacity	Project Name	Landon Road
Project Termini	Hwy 49 to Coleman Road (.25 mile)		
Project Description	Widen Landon Road and add bike/ped facilities. Rail Road diagnostics work.		



FY	Source	Phase	Federal	Match	Total
2020	STP-TMA	RR Dia	\$8,000	\$2,000	\$10,000
2021	STP-TMA	CON/RR	\$2,952,000	\$738,000	\$3,690,000
Project Totals			\$2,960,000	\$740,000	\$3,700,000

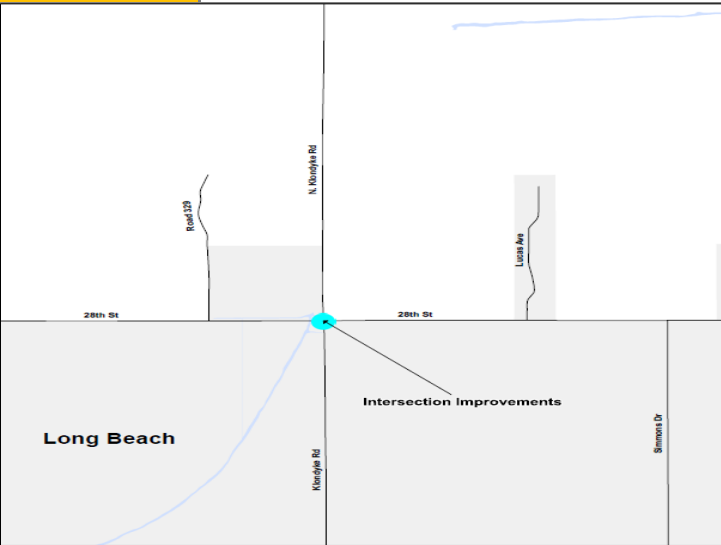
Project Notes					
Action	Add to TIP	Date	6/25/2015	Type	Amend
Remarks	\$1,000,000 STP				
Action	Add Funds	Date	8/25/2016	Type	Amend
Remarks	Add \$1,208,133 STP				
Action	Change Year	Date	8/25/2016	Type	Mod
Remarks	Advance Construction over FY19 & FY20				
Action	Add Funds	Date	8/23/2018	Type	Amend
Remarks	\$751,867 STBG				
Action	Breakout RR	Date	3/20/2019	Type	Mod
Remarks	\$8,000 federal				
Action	Move from \$ from 2019 to 2020	Date	10/3/2019	Type	Mod
Remarks					
Action	Adjust phase description	Date	12/2/2020	Type	Mod
Remarks					
Action		Date		Type	
Remarks					
Action		Date		Type	
Remarks					
Action		Date		Type	
Remarks					

Mississippi Gulf Coast Metropolitan Planning Organization

FY2021-2024 Transportation Improvement Program (TIP)



County	Harrison	Agency	Long Beach
Improvement Type	Intersection	Route	28th Street
Project Termini	28th Street - at Klondyke Road		
Project Description	Project is to improve the intersection of 28th Street and Klondyke Road. A determination of improvements to signalization, additional turn lanes and the consideration of a roundabout.		

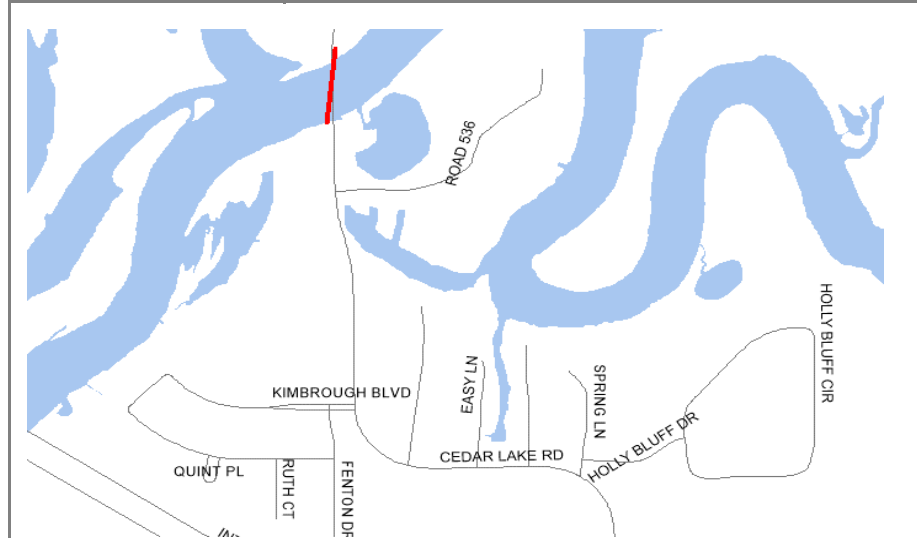
						Project Notes					
Action	Add to TIP	Date	8/1/2020	Type	Amend						
Remarks	\$800,000										
Action		Date		Type							
Remarks											
Action		Date		Type							
Remarks											
Action		Date		Type							
Remarks											
Action		Date		Type							
Remarks											
Action		Date		Type							
Remarks											
Action		Date		Type							
Remarks											
Action		Date		Type							
Remarks											
Action		Date		Type							
Remarks											
Action		Date		Type							
Remarks											
Project Totals			\$800,000	\$200,000	\$1,000,000						

Mississippi Gulf Coast Metropolitan Planning Organization

FY2021-2024 Transportation Improvement Program (TIP)



County	Harrison	Agency	Biloxi
Improvement Type	Bridge	Route	Cedar Lake Road
Project Termini	Biloxi River		
Project Description	Repairs for Cedar Lake Road bridge		



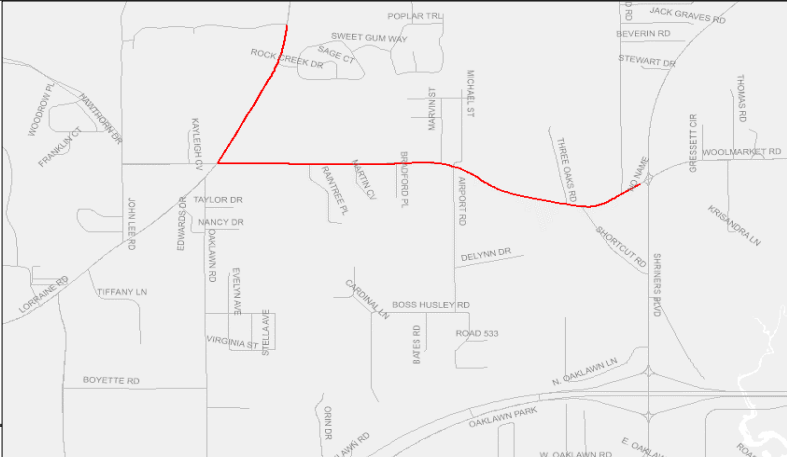
FY	Source	Phase	Federal	Match	Total
2022	TMA	CON	\$560,000	\$140,000	\$700,000
Project Totals			\$560,000	\$140,000	\$700,000

Project Notes					
Action	Add to TIP	Date	8/23/2018	Type	Amend
Remarks	Bridge group project				
Action		Date		Type	
Remarks					
Action		Date		Type	
Remarks					
Action		Date		Type	
Remarks					
Action		Date		Type	
Remarks					
Action		Date		Type	
Remarks					
Action		Date		Type	
Remarks					
Action		Date		Type	
Remarks					

Mississippi Gulf Coast Metropolitan Planning Organization

FY2021-2024 Transportation Improvement Program (TIP)



County	Harrison				Agency	Biloxi																																																																																						
Improvement Type	Bicycle/Pedestrian				Route	Woolmarket Road & Lorraine Road																																																																																						
Project Termini	East to Shriners Blvd (1.3 mile) and North to Nature's Trail (.5 mile)																																																																																											
Project Description	10' pathway one side of roadway																																																																																											
					<div>Project Notes</div> <table><tr><td>Action</td><td>Add to TIP</td><td>Date</td><td>8/23/2018</td><td>Type</td><td>Amend</td></tr><tr><td>Remarks</td><td colspan="5">\$880,000</td></tr><tr><td>Action</td><td>Terminus change</td><td>Date</td><td>6/15/2021</td><td>Type</td><td>Amend</td></tr><tr><td>Remarks</td><td colspan="5">Extended terminus from Airport Rd to Shriners Blvd</td></tr><tr><td>Action</td><td></td><td>Date</td><td></td><td>Type</td><td></td></tr><tr><td>Remarks</td><td colspan="5"></td></tr><tr><td>Action</td><td></td><td>Date</td><td></td><td>Type</td><td></td></tr><tr><td>Remarks</td><td colspan="5"></td></tr><tr><td>Action</td><td></td><td>Date</td><td></td><td>Type</td><td></td></tr><tr><td>Remarks</td><td colspan="5"></td></tr><tr><td>Action</td><td></td><td>Date</td><td></td><td>Type</td><td></td></tr><tr><td>Remarks</td><td colspan="5"></td></tr><tr><td>Action</td><td></td><td>Date</td><td></td><td>Type</td><td></td></tr><tr><td>Remarks</td><td colspan="5"></td></tr></table>				Action	Add to TIP	Date	8/23/2018	Type	Amend	Remarks	\$880,000					Action	Terminus change	Date	6/15/2021	Type	Amend	Remarks	Extended terminus from Airport Rd to Shriners Blvd					Action		Date		Type		Remarks						Action		Date		Type		Remarks						Action		Date		Type		Remarks						Action		Date		Type		Remarks						Action		Date		Type		Remarks					
Action	Add to TIP	Date	8/23/2018	Type	Amend																																																																																							
Remarks	\$880,000																																																																																											
Action	Terminus change	Date	6/15/2021	Type	Amend																																																																																							
Remarks	Extended terminus from Airport Rd to Shriners Blvd																																																																																											
Action		Date		Type																																																																																								
Remarks																																																																																												
Action		Date		Type																																																																																								
Remarks																																																																																												
Action		Date		Type																																																																																								
Remarks																																																																																												
Action		Date		Type																																																																																								
Remarks																																																																																												
Action		Date		Type																																																																																								
Remarks																																																																																												
FY	Source	Phase	Federal	Match	Total																																																																																							
2022	TMA-STBG	CON	\$880,000	\$220,000	\$1,100,000																																																																																							
Project Totals			\$880,000	\$220,000	\$1,100,000																																																																																							

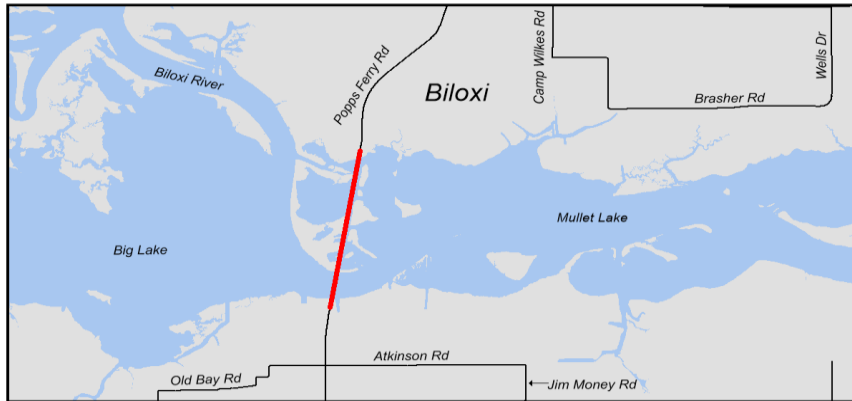
Action		Date		Type	
Remarks					
Action		Date		Type	
Remarks					
Action		Date		Type	
Remarks					
Action		Date		Type	
Remarks					
Action		Date		Type	
Remarks					

Mississippi Gulf Coast Metropolitan Planning Organization

FY2021-2024 Transportation Improvement Program (TIP)



County	Harrison	Agency	Biloxi
Improvement Type	Bridge	Route	Popps Ferry Road
Project Termini	.3 miles of bridge		
Project Description	Replace the existing Popps Ferry bridge		



FY	Source	Phase	Federal	Match	Total
ILL	Earmark	ENV	\$4,000,000	\$1,000,000	\$5,000,000
ILL	Earmark	CON	\$8,000,000	\$2,000,000	\$10,000,000
Project Totals			\$12,000,000	\$3,000,000	\$15,000,000

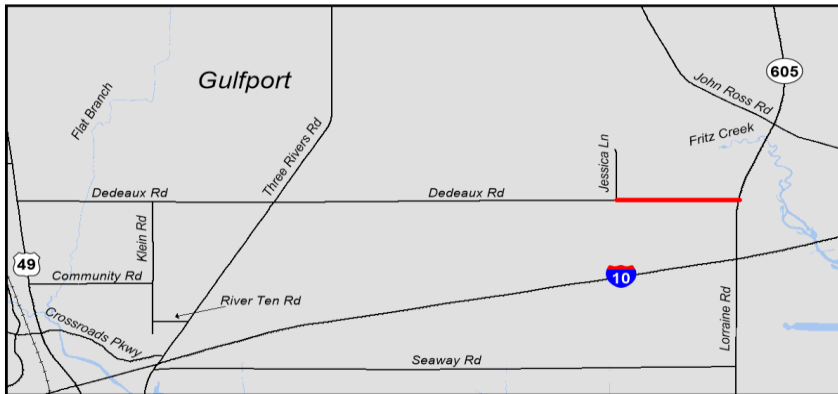
Project Notes					
Action	Add to TIP	Date	5/21/2009	Type	Amend
Remarks	\$4,000,000 Earmark Funds (Environmental Phase)				
Action	Change year	Date	10/1/2012	Type	Mod
Remarks	Move ENV from FY12 to FY13				
Action	Add Funds	Date	9/13/2013	Type	Amend
Remarks	Add \$8,000,000 Earmark Funds (Construction Phase)				
Action	Review	Date	8/31/2017	Type	N/A
Remarks	No CON yr assigned - MPO illustrative List				
Action		Date		Type	
Remarks					
Action		Date		Type	
Remarks					
Action		Date		Type	
Remarks					
Action		Date		Type	
Remarks					

Mississippi Gulf Coast Metropolitan Planning Organization

FY2021-2024 Transportation Improvement Program (TIP)



County	Harrison	Agency	Gulfport
Improvement Type	Capacity	Route	Dedeaux Road Phase II
Project Termini	Hwy 605 to Jessican Lane (.67 mile)		
Project Description	Widening and adding bike/ped facilities		



FY	Source	Phase	Federal	Match	Total
ILL	TMA	CON	\$3,760,000	\$940,000	\$4,700,000
Project Totals			\$3,760,000	\$940,000	\$4,700,000

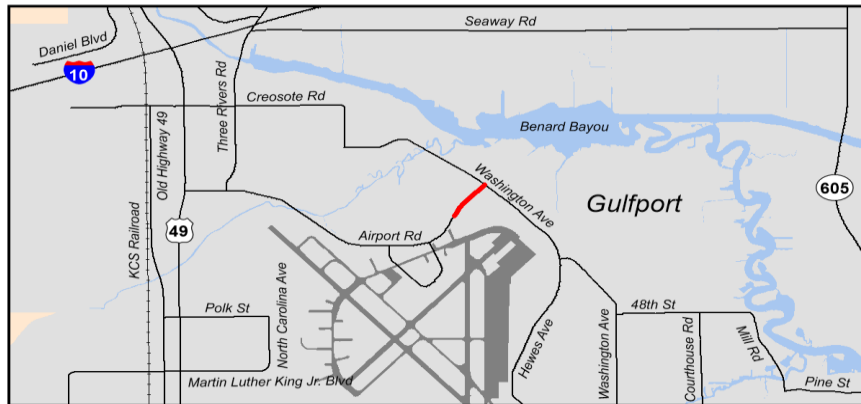
Project Notes					
Action	Add to TIP	Date	8/23/2018	Type	Amend
Remarks	\$3,760,000 added to Illustrative List				
Action		Date		Type	
Remarks					
Action		Date		Type	
Remarks					
Action		Date		Type	
Remarks					
Action		Date		Type	
Remarks					
Action		Date		Type	
Remarks					
Action		Date		Type	
Remarks					

Mississippi Gulf Coast Metropolitan Planning Organization

FY2021-2024 Transportation Improvement Program (TIP)



County	Harrison	Agency	Gulfport
Improvement Type	Capacity	Route	Airport Road
Project Termini	Washington Ave to the existing 4 lane segment (.25 mile)		
Project Description	Widen Airport Road from 2 to 4 lanes and build roundabout at Washington Avenue		



FY	Source	Phase	Federal	Match	Total
ILL	TMA	CON	\$147,085	\$36,771	\$183,856
Project Totals			\$147,085	\$36,771	\$183,856

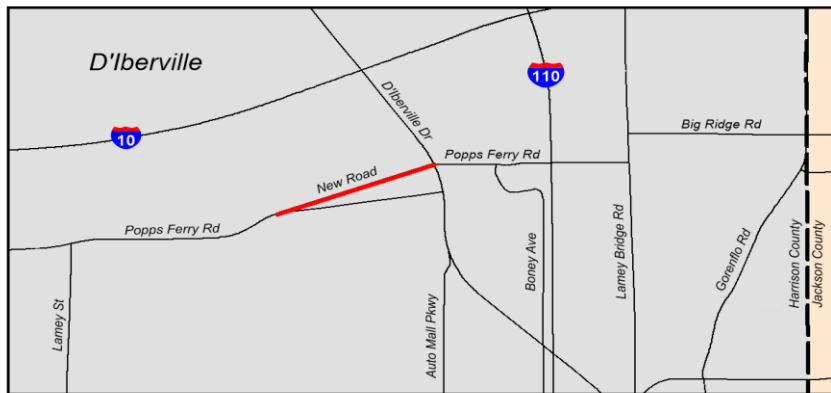
Project Notes					
Action	Add to TIP	Date	6/25/2015	Type	Amend
Remarks	\$550,000 STP				
Action	Change Year	Date	2/23/2017	Type	Mod
Remarks	Move CON year from FY17 & FY19				
Action	Change Year	Date	8/23/2018	Type	Mod
Remarks	Move project to the Illustrative List				
Action	Reduce funding	Date	12/16/2019	Type	Mod
Remarks	Reduced to add to Courthouse Road				
Action		Date		Type	
Remarks					
Action		Date		Type	
Remarks					
Action		Date		Type	
Remarks					
Action		Date		Type	
Remarks					
Action		Date		Type	
Remarks					

Mississippi Gulf Coast Metropolitan Planning Organization

FY2021-2024 Transportation Improvement Program (TIP)



County	Harrison	Agency	D'Iberville
Improvement Type	New Construction	Route	Popps Ferry Road
Project Termini	Belle Street to Galleria Parkway/D'Iberville Boulevard (.5 mile)		
Project Description	Realignment of Popps Ferry Road to new roadway - construct new segment of multimodal roadway		



FY	Source	Phase	Federal	Match	Total
III	TMA	CON	\$2,938,780	\$734,694	\$3,673,474
Project Totals			\$2,938,780	\$734,694	\$3,673,474

Project Notes					
Action	Add to TIP	Date	8/25/2016	Type	Amend
Remarks	\$2,938,779 STP ☐				
Action	Change Year	Date	2/23/2017	Type	Mod
Remarks	Advance construction FY18 and FY19				
Action	Change Year	Date	8/31/2017	Type	Mod
Remarks	Remove advance construction, all funds in FY20				
Action	Change Year	Date	8/23/2018	Type	Mod
Remarks	Move to illustrative List				
Action		Date		Type	
Remarks					
Action		Date		Type	
Remarks					
Action		Date		Type	
Remarks					
Action		Date		Type	
Remarks					
Action		Date		Type	
Remarks					

Mississippi Gulf Coast Metropolitan Planning Organization

FY2021-2024 Transportation Improvement Program (TIP)



County	Harrison	Agency	Biloxi
Improvement Type	New Construction	Route	Popps Ferry Road
Project Termini	Pass Road South to Hwy 90 (.9 mile)		
Project Description	Extend Popps Ferry Road south across Pass Road to Hwy 90. Includes multi modal facilities, a new signal, a rail crossing, ROW purchases using earmark funds, and improvements to a small section of existing roadway south of the Pass Road intersection		



FY	Source	Phase	Federal	Match	Total
2018	Earmark	ROW	\$5,418,718	\$2,315,090	\$7,733,808
2022	TMA	CON	\$2,163,200	\$540,800	\$2,704,000
Illustrative	Requested	CON	\$2,100,000	\$0	\$2,100,000
Project Totals			\$9,681,918	\$2,855,890	\$12,537,808

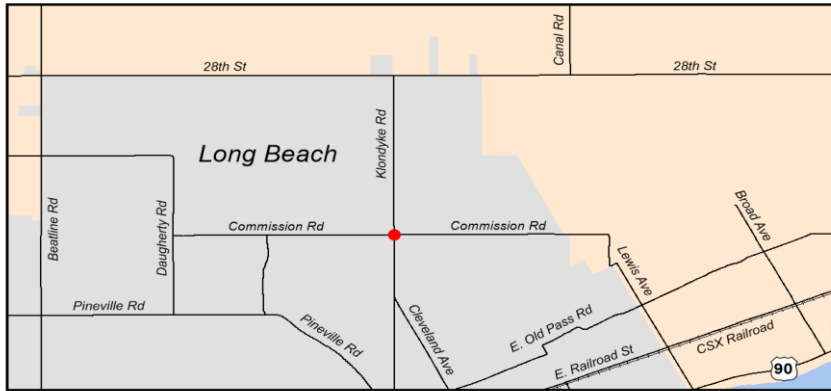
Project Notes					
Action	TIP Add	Date	11/29/2007	Type	Amend
Remarks	\$2,000,000 STP added to TIP				
Action	Change	Date	5/7/2011	Type	Amend
Remarks	Change termini from "Coliseum to Pass Rd" to "Pass Rd to Hwy 90"				
Action	Add Funds	Date	5/7/2011	Type	Amend
Remarks	ENV-\$550,000/\$137,500, Design \$400,000/\$100,000, ROW \$4,560,000/\$1,140,000, Con \$890,000/\$4,406,000				
Action	Add Funds	Date	5/7/2011	Type	Mod
Remarks	\$163,200 Administrative Adjustment				
Action	Update Funds	Date	8/25/2016	Type	Mod
Remarks	Update earmark: Balance of \$5,844,596 moved to ROW phase				
Action	Year Change	Date	2/23/2017	Type	Mod
Remarks	Apply advance construction FY18/19				
Action	Year Change	Date	4/27/2017	Type	Mod
Remarks	Shift Adv. Constr. From FY18/19 to FY19/20				
Action	Add funds		7/12/2021		Mod
Remarks	Request increase funding to existing project				

Mississippi Gulf Coast Metropolitan Planning Organization

FY2021-2024 Transportation Improvement Program (TIP)



County	Harrison	Agency	Long Beach
Improvement Type	Intersection	Route	Klondyke Road
Project Termini	Commision Avenue Intersection		
Project Description	Intersection improvements including sidewalk connectivity and crosswalks		



FY	Source	Phase	Federal	Match	Total
2021	TMA	CON	\$760,000	\$190,000	\$950,000
Project Totals			\$760,000	\$190,000	\$950,000

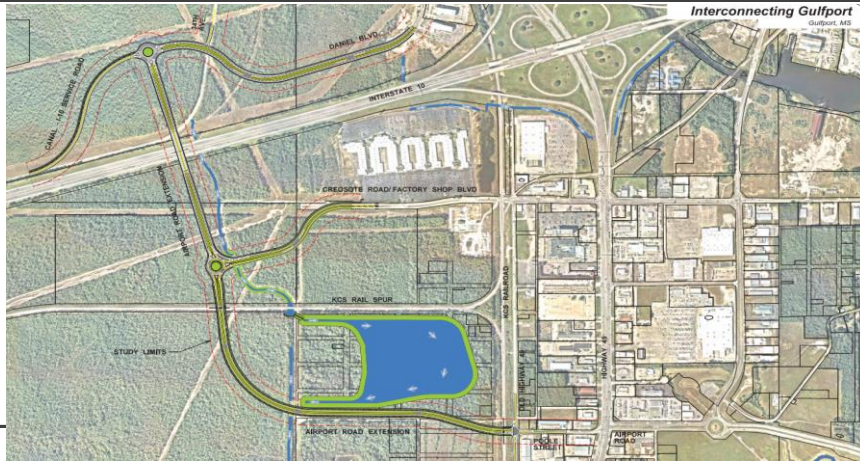
Project Notes					
Action	Add to TIP	Date	8/23/2018	Type	Amend
Remarks	\$760,000 STBG				
Action		Date		Type	
Remarks					
Action		Date		Type	
Remarks					
Action		Date		Type	
Remarks					
Action		Date		Type	
Remarks					
Action		Date		Type	
Remarks					
Action		Date		Type	
Remarks					
Action		Date		Type	
Remarks					

Mississippi Gulf Coast Metropolitan Planning Organization

FY2021-2024 Transportation Improvement Program (TIP)



County	Harrison	Agency	Gulfport	Length	2 miles
Improvement Type	New Construction	Route	Interconnecting Gulfport		
Project Termini	Daniel Boulevard to Airport Road				
Project Description	The project will add approximately 0.8 miles of 4-lane boulevard roadway and approximately 1.1 miles of 2-lane roadway with lighting, storm drain improvements, multimodal paths, signals, raised median, roundabouts, and other street improvements.This project will provide an interconnected transportation network to three major employment centers.				



FY	Source	Phase	Federal	Match	Total
2020	BUILD	PE	\$996,816	\$249,205	\$1,246,021
2021	BUILD	PE	\$1,155,460	\$288,865	\$1,444,325
2022	BUILD	CON	\$18,307,724	\$19,001,930	\$37,309,654
Project Totals			\$20,460,000	\$19,540,000	\$40,000,000

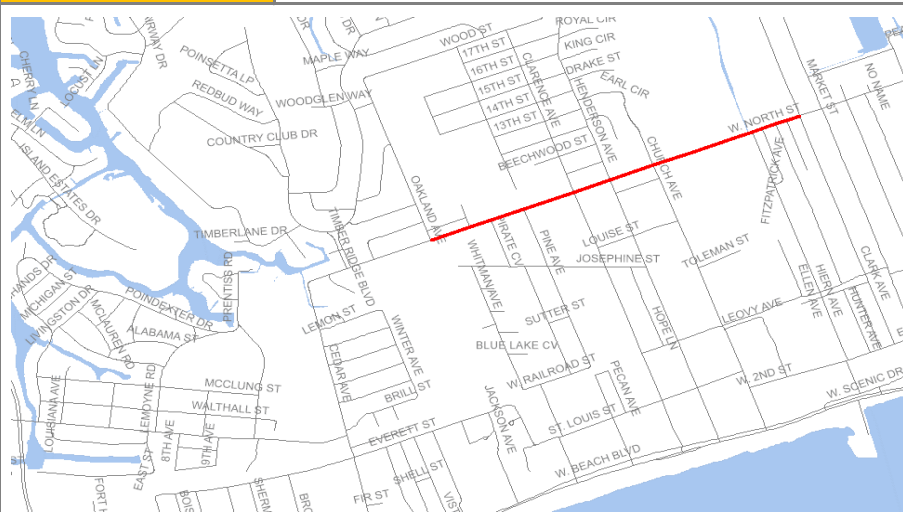
Project Notes					
Action	Add to TIP	Date	12/5/2019	Type	Amend
Remarks	BUILD Grant Award \$20,460,000				
Action	Adjust page	Date	3/16/2020	Type	Mod
Remarks	ROW is to be acquired by the city and used as Special Match Credit for CON				
	Seprated into phases				
Action	Add funds	Date	5/28/2021	Type	Amend
Remarks	Add \$7,780,000 in local funds & seprate 2021 phases				
Action		Date		Type	
Remarks					
Action		Date		Type	
Remarks					
Action		Date		Type	
Remarks					
Action		Date		Type	
Remarks					

Mississippi Gulf Coast Metropolitan Planning Organization

FY2021-2024 Transportation Improvement Program (TIP)



County	Harrison	Agency	Pass Christian
Improvement Type	Sidewalks	Route	North Street
Project Termini	High School to Pass Estates		
Project Description	Sidewalks providing safe access for students to school		



FY	Source	Phase	Federal	Match	Total
2021	TMA	CON	\$452,800	\$113,200	\$566,000
Project Totals			\$452,800	\$113,200	\$566,000

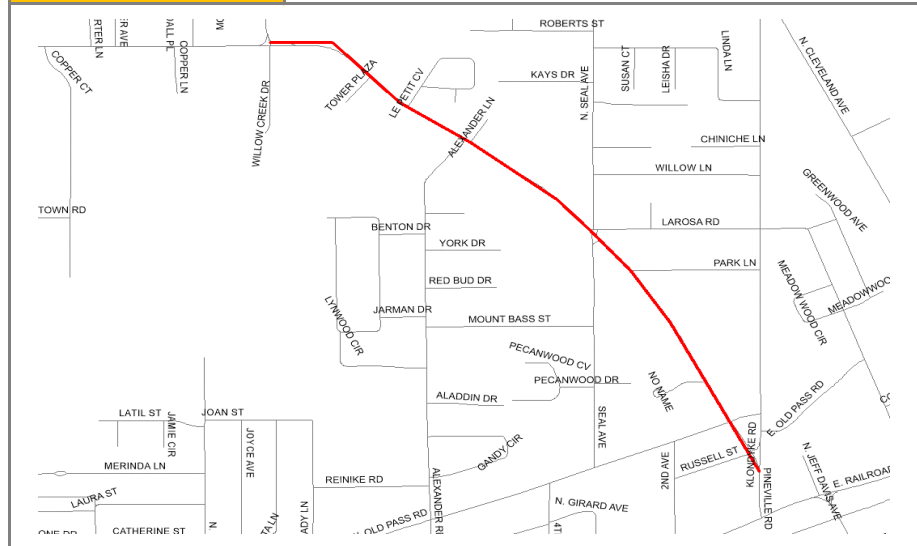
Project Notes					
Action	Add to TIP	Date	6/25/2015	Type	Amend
Remarks					
Action		Date		Type	
Remarks					
Action		Date		Type	
Remarks					
Action		Date		Type	
Remarks					
Action		Date		Type	
Remarks					
Action		Date		Type	
Remarks					
Action		Date		Type	
Remarks					

Mississippi Gulf Coast Metropolitan Planning Organization

FY2021-2024 Transportation Improvement Program (TIP)



County	Harrison	Agency	Long Beach
Improvement Type	Sidewalks	Route	Pineville Road PH II
Project Termini	Harper McCaughan to Klondyke Road		
Project Description	Pedestrian access and safety		



FY	Source	Phase	Federal	Match	Total
2021	TMA	CON	\$400,000	\$100,000	\$500,000
Project Totals			\$400,000	\$100,000	\$500,000

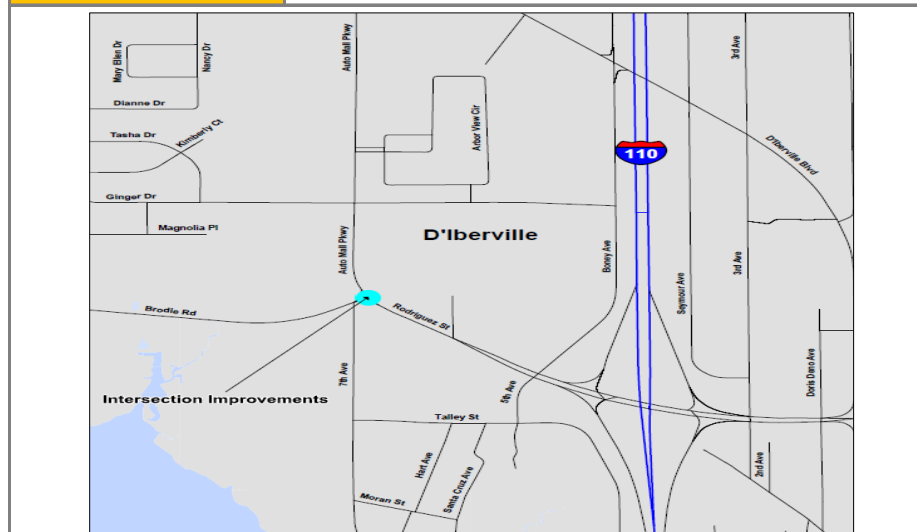
Project Notes					
Action	Add to TIP	Date	8/23/2020	Type	Amend
Remarks					
Action		Date		Type	
Remarks					
Action		Date		Type	
Remarks					
Action		Date		Type	
Remarks					
Action		Date		Type	
Remarks					
Action		Date		Type	
Remarks					
Action		Date		Type	
Remarks					
Action		Date		Type	
Remarks					

Mississippi Gulf Coast Metropolitan Planning Organization

FY2021-2024 Transportation Improvement Program (TIP)



County	Harrison	Agency	D' Iberville
Improvement Type	Intersection	Route	Brodie Road
Project Termini	Brodie Road – at Automall Parkway		
Project Description	Project will improve traffic flow at the Brodie Road/Automall Parkway intersection with a roundabout. Project Purpose: Traffic flow		



FY	Source	Phase	Federal	Match	Total
2023	TMA	CON	\$432,000	\$108,000	\$540,000
Project Totals			\$432,000	\$108,000	\$540,000

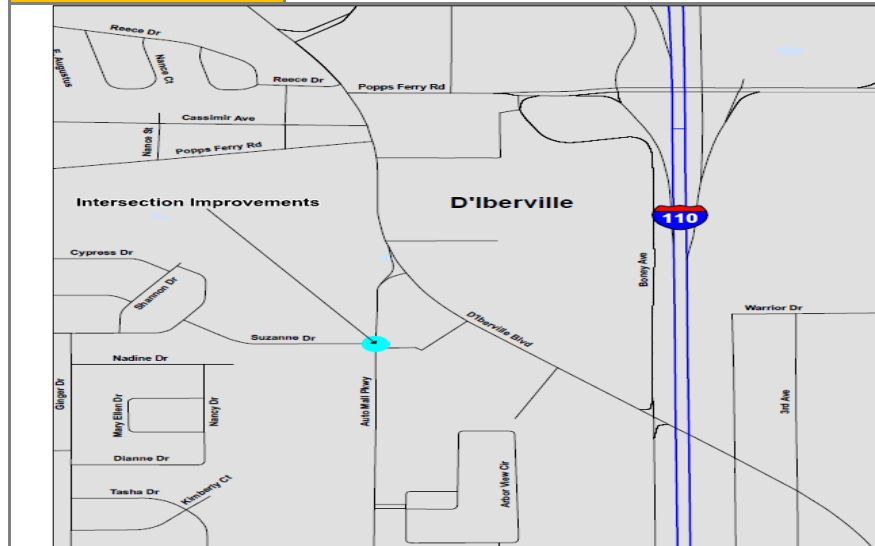
Project Notes					
Action	Add to TIP	Date	8/1/2020	Type	Amend
Remarks	\$432,000				
Action		Date		Type	
Remarks					
Action		Date		Type	
Remarks					
Action		Date		Type	
Remarks					
Action		Date		Type	
Remarks					
Action		Date		Type	
Remarks					
Action		Date		Type	
Remarks					
Action		Date		Type	
Remarks					

Mississippi Gulf Coast Metropolitan Planning Organization

FY2021-2024 Transportation Improvement Program (TIP)



County	Harrison	Agency	Diberville
Improvement Type	Intersection	Route	Suzanne Drive
Project Termini	Suzanne Drive – at Automall Parkway		
Project Description	Project will realign intersection from its current offset condition allowing east and west bound traffic to flow concurrently. Project Purpose: Traffic flow		



FY	Source	Phase	Federal	Match	Total
2024	TMA	CON	\$480,000	\$120,000	\$600,000
Project Totals			\$480,000	\$120,000	\$600,000

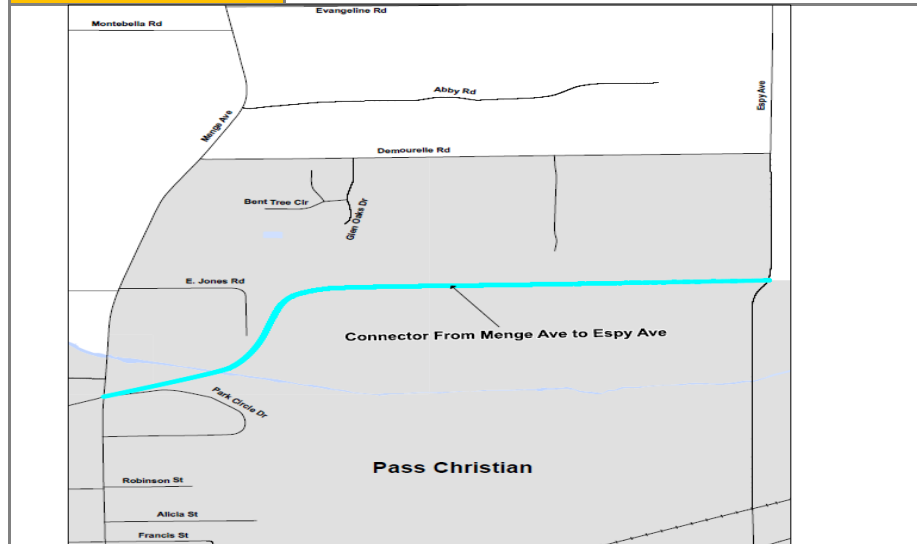
Project Notes					
Action	Add to TIP	Date	8/1/2020	Type	Amend
Remarks	\$480,000				
Action		Date		Type	
Remarks					
Action		Date		Type	
Remarks					
Action		Date		Type	
Remarks					
Action		Date		Type	
Remarks					
Action		Date		Type	
Remarks					
Action		Date		Type	
Remarks					

Mississippi Gulf Coast Metropolitan Planning Organization

FY2021-2024 Transportation Improvement Program (TIP)



County	Hancock	Agency	Pass Christian
Improvement Type	New	Route	North Street
Project Termini	Menge Avenue to Espy Avenue		
Project Description	<p>The new road will extend the existing North Street to Espy Avenue providing access to the Emergency Operations Center and serving as an alternate roadway for area roads that experience stormwater inundation.</p> <p>Project Purpose: System Linkage</p>		



FY	Source	Phase	Federal	Match	Total
2023	TMA	CON	\$2,591,038	\$625,259	\$3,216,297
Project Totals			\$2,591,038	\$625,259	\$3,216,297

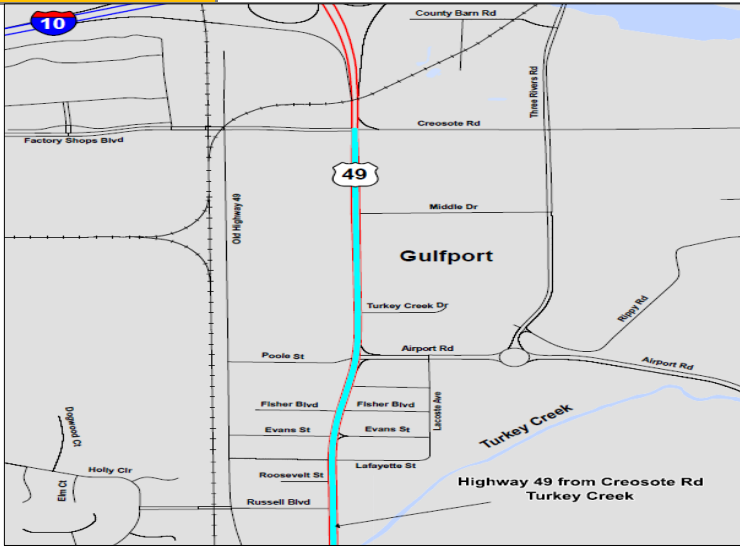
Project Notes					
Action	Add to TIP	Date	8/1/2020	Type	Amend
Remarks	\$2,591,038				
Action		Date		Type	
Remarks					
Action		Date		Type	
Remarks					
Action		Date		Type	
Remarks					
Action		Date		Type	
Remarks					
Action		Date		Type	
Remarks					
Action		Date		Type	
Remarks					

Mississippi Gulf Coast Metropolitan Planning Organization

FY2021-2024 Transportation Improvement Program (TIP)



County	Harrison	Agency	Gulfport
Improvement Type	Safety	Route	US 49
Project Termini	Creosote Road to Turkey Creek		
Project Description	Improvements for safety. Project Length: 1 mile		



FY	Source	Phase	Federal	Match	Total
2024	TMA	CON	\$2,162,720	\$540,680	\$2,703,400
Project Totals			\$2,162,720	\$540,680	\$2,703,400

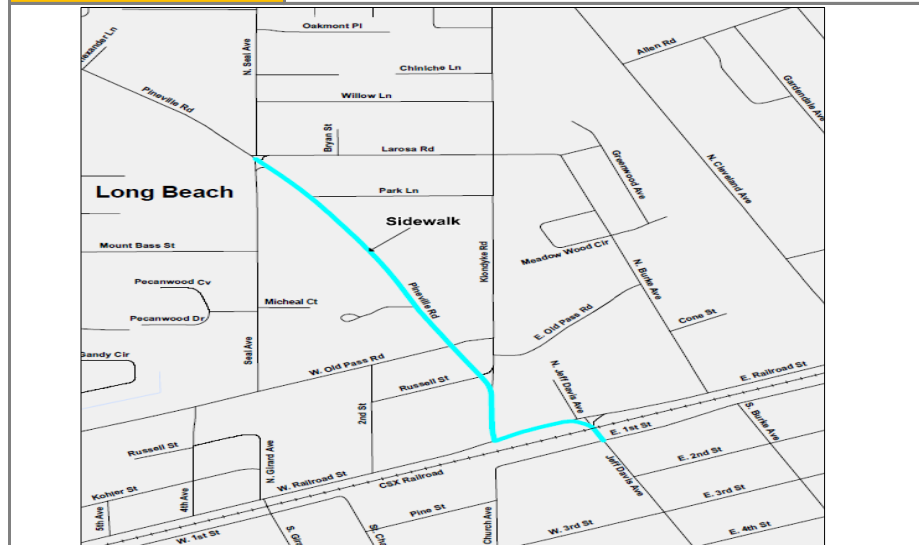
Project Notes					
Action	Add to TIP	Date	8/1/2020	Type	Amend
Remarks	\$2,162,720				
Action		Date		Type	
Remarks					
Action		Date		Type	
Remarks					
Action		Date		Type	
Remarks					
Action		Date		Type	
Remarks					
Action		Date		Type	
Remarks					
Action		Date		Type	
Remarks					

Mississippi Gulf Coast Metropolitan Planning Organization

FY2021-2024 Transportation Improvement Program (TIP)



County	Harrison	Agency	Long Beach
Improvement Type	Sidewalks	Route	Pineville Road PH III
Project Termini	Seal Avenue to Railroad Street		
Project Description	Continuation of previous projects on Pineville Road to connect to sidewalks on Jeff Davis Avenue. .71 mile		
			Project Length:



FY	Source	Phase	Federal	Match	Total
2023	TMA	CON	\$600,000	\$150,000	\$750,000
Project Totals			\$600,000	\$150,000	\$750,000

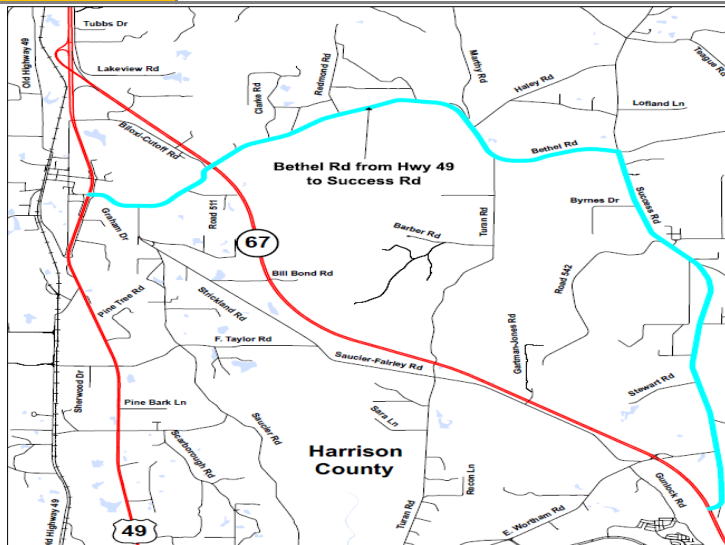
Project Notes					
Action	Add to TIP	Date	8/1/2020	Type	Amend
Remarks	\$600,000				
Action		Date		Type	
Remarks					
Action		Date		Type	
Remarks					
Action		Date		Type	
Remarks					
Action		Date		Type	
Remarks					
Action		Date		Type	
Remarks					
Action		Date		Type	
Remarks					

Mississippi Gulf Coast Metropolitan Planning Organization

FY2021-2024 Transportation Improvement Program (TIP)



County	Harrison	Agency	Harrison
Improvement Type	Maintenance	Route	Bethel Road/Success Road
Project Termini	Bethel Road – US 49 to Success Road /Success Road – Bethel Road to Hwy 67		
Project Description	Chip seal, fog seal, base and edge repairs, shoulder material, striping and pavement signs. Project Length: 9.5 miles		



FY	Source	Phase	Federal	Match	Total
2022	TMA	CON	\$471,200	\$117,800	\$589,000
Project Totals			\$471,200	\$117,800	\$589,000

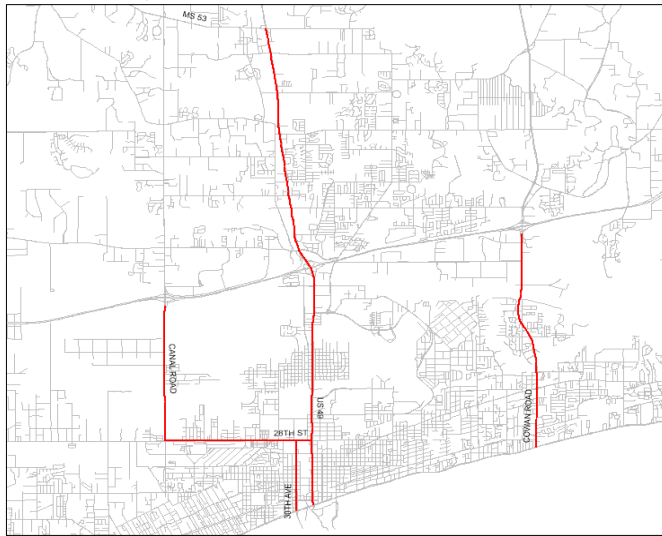
Project Notes					
Action	Add to TIP	Date	8/1/2020	Type	Amend
Remarks	\$471,200				
Action		Date		Type	
Remarks					
Action		Date		Type	
Remarks					
Action		Date		Type	
Remarks					
Action		Date		Type	
Remarks					
Action		Date		Type	
Remarks					
Action		Date		Type	
Remarks					

Mississippi Gulf Coast Metropolitan Planning Organization

FY2021-2024 Transportation Improvement Program (TIP)



County	Harrison	Agency	Mississippi State Port Authority
Improvement Type	Traffic Flow	Route	Port of Gulfport
Project Termini	Port of Gulfport – US 49, Canal Road & Hwy 605		
Project Description	Signal timing plans and intelligent signage to improve efficient access to the Port.		



FY	Source	Phase	Federal	Match	Total
2021	TMA		\$200,000	\$50,000	\$250,000
Project Totals			\$200,000	\$50,000	\$250,000

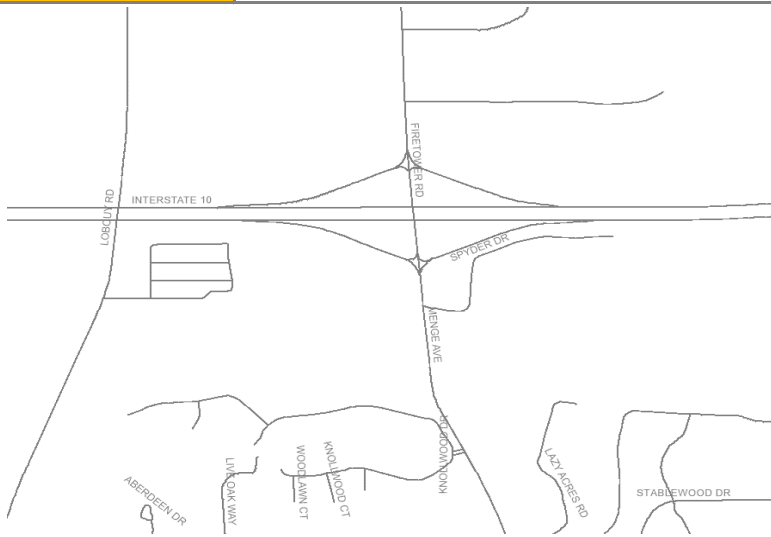
Project Notes					
Action	Add to TIP	Date	8/1/2020	Type	Amend
Remarks					
Action		Date		Type	
Remarks					
Action		Date		Type	
Remarks					
Action		Date		Type	
Remarks					
Action		Date		Type	
Remarks					
Action		Date		Type	
Remarks					
Action		Date		Type	
Remarks					

Mississippi Gulf Coast Metropolitan Planning Organization

FY2021-2024 Transportation Improvement Program (TIP)



County	Harrison	Agency	MDOT
Improvement Type	Interchange improvements	Route	I-10
Project Termini	Menge Avenue/Firetower Road		
Project Description	Widen the overpass and add lanes to the ramps.		



Project Notes

FY	Source	Phase	Federal	Match	Total
Illustrative	Requested	CON	\$10,000,000	\$0	\$10,000,000
Project Totals			\$10,000,000	\$0	\$10,000,000

Action	Add to TIP	Date	7/12/2021	Type	Mod
Remarks	New project				
Action		Date		Type	
Remarks					
Action		Date		Type	
Remarks					
Action		Date		Type	
Remarks					
Action		Date		Type	
Remarks					
Action		Date		Type	
Remarks					
Action		Date		Type	
Remarks					

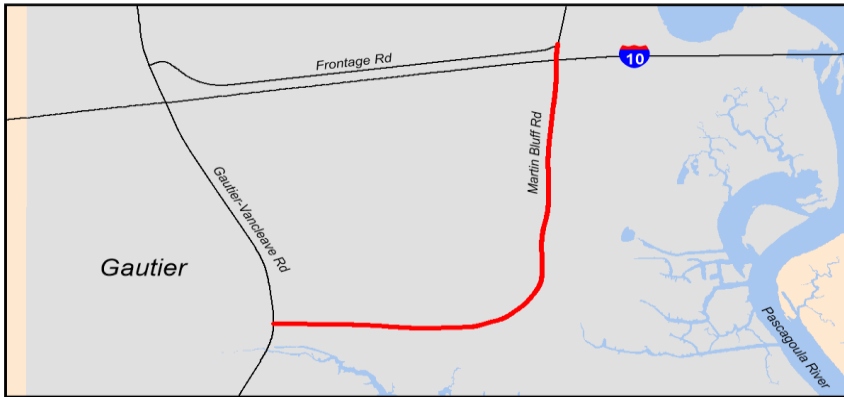
Jackson County

Mississippi Gulf Coast Metropolitan Planning Organization

FY2021-2024 Transportation Improvement Program (TIP)



County	Jackson	Agency	Gautier
Improvement Type	Reconstruction	Route	Martin Bluff Road
Project Termini	Gautier-Vancleave Road to Frontage Road (2.1 miles)		
Project Description	Widening, add new Bike/Ped facilities and Intersection Improvements		



FY	Source	Phase	Federal	Match	Total
2019	Non-Urb	CON	\$1,136,076	\$416,001	\$4,160,006
2019	STP-TMA	CON	\$527,926		
2021	Non-Urb	CON	\$778,331	\$416,001	
2021	STP-TMA	CON	\$885,671		
2021	HIP	CON	\$1,442,074	\$360,518	\$1,802,592
2021	Non-Urb	CON	\$720,000	\$180,000	\$900,000
Project Totals			\$5,490,078	\$1,372,520	\$6,862,598

Project Notes					
Action	Add to TIP	Date	6/17/2004	Type	Amend
Remarks	\$900,000 STP				
Action	Add Funds	Date	12/9/2010	Type	Amend
Remarks	\$936,000 STP & \$1,700,000 earmark				
Action	Add funds	Date	10/24/2013	Type	Amend
Remarks	Add \$2,392,004 STP - Totaling \$3,328,004 STP				
Action	Change Year	Date	10/1/2014	Type	Mod
Remarks	Advance Construction Split between FY16 & FY17				
Action	Add ROW	Date	5/1/2015	Type	Mod
Remarks	Add ROW - \$3,199,682 Earmark				
Action	Change Year	Date	8/25/2016	Type	Mod
Remarks	Move from FY 16/17 to FY 17/18				
Action	Change Year	Date	8/31/2017	Type	Mod
Remarks	Move from FY 17/18 to FY 18/19				
Action	Adjust funds		1/25/2018		Mod
Remarks	Adjust 19/20 totals to reflect available non-urban and TMA funds.				
Action	Add funds		12/5/2019		Amend
Remarks	Added \$1,442,074 in Highway Infrastructure Program funds				
Action	Combine Projects		2/11/2021		Mod
Remarks	Combine original MB project with MB path (\$720K) approved in 2020				
Action					
Remarks					

Mississippi Gulf Coast Metropolitan Planning Organization

FY2021-2024 Transportation Improvement Program (TIP)



County	Jackson	Agency	Moss Point
Improvement Type	Access	Route	I-10 Frontage
Project Termini	MS 613 and MS 63		
Project Description	I-10 Interstate Commerce District		



FY	Source	Phase	Federal	Match	Total
Illustrative	Requested	CON	\$4,500,000	\$0	\$4,500,000
Project Totals			\$4,500,000	\$0	\$4,500,000

Project Notes					
Action	Add to TIP	Date	7/12/2021	Type	Mod
Remarks	New project				
Action		Date		Type	
Remarks					
Action		Date		Type	
Remarks					
Action		Date		Type	
Remarks					
Action		Date		Type	
Remarks					
Action		Date		Type	
Remarks					
Action		Date		Type	
Remarks					
Action		Date		Type	
Remarks					

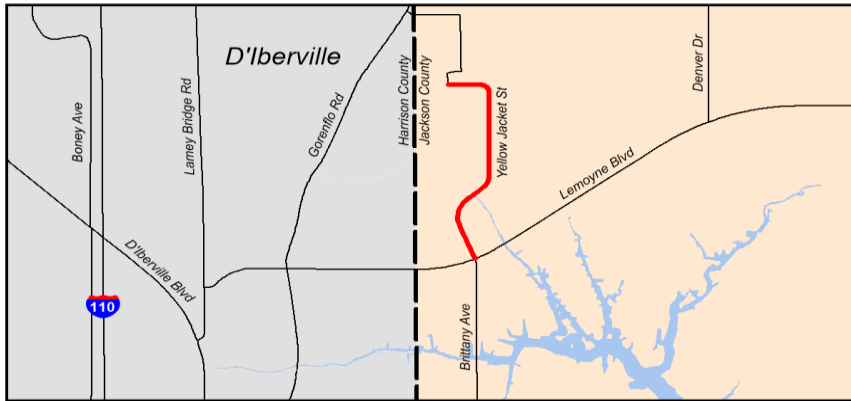
[illegible]

Mississippi Gulf Coast Metropolitan Planning Organization

FY2021-2024 Transportation Improvement Program (TIP)



County	Jackson	Agency	Jackson County
Improvement Type	Bike/Ped	Route	Yellow Jacket Street
Project Termini	Lemoyne Boulevard to St Martin North Elementary School (.4 mile)		
Project Description	Construct a new sidewalk from Lemoyne Blvd intersection and ballfields up to the elementary school		



Fiscal Yr	Source	Phase	Federal	Match	Total
2019	TAP	CON	\$192,000	\$48,000	\$240,000
Project Totals			\$192,000	\$48,000	\$240,000

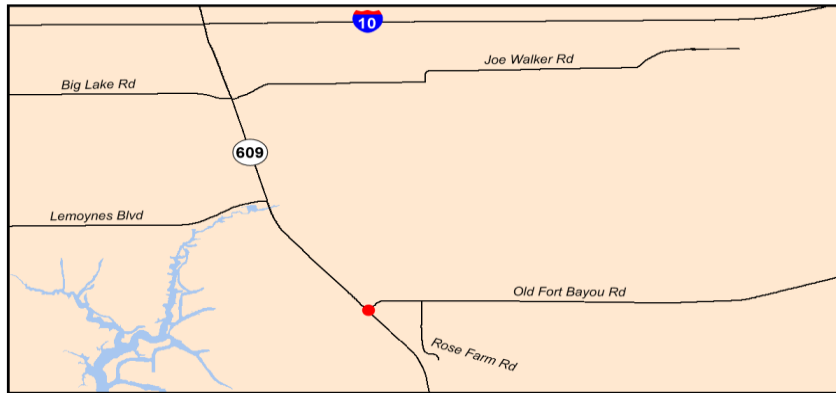
Project Notes					
Action	Add to TIP	Date	8/25/2016	Type	Amend
Remarks	\$160,000 TAP				
Action	Change Year	Date	2/23/2017	Type	Mod
Remarks	Move from FY20 to FY18				
Action	Change Year	Date	4/26/2018	Type	Mod
Remarks	Move from FY18 to FY19				
Action	Funding Increase	Date	5/1/2019	Type	Mod
Remarks	20% increase				
Action		Date		Type	
Remarks					
Action		Date		Type	
Remarks					
Action		Date		Type	
Remarks					
Action		Date		Type	
Remarks					
Action		Date		Type	
Remarks					

Mississippi Gulf Coast Metropolitan Planning Organization

FY2021-2024 Transportation Improvement Program (TIP)



County	Jackson	Agency	Jackson County
Improvement Type	Intersection	Route	Hwy 609
Project Termini	Hwy 609 and Old Fort Bayou Road		
Project Description	Intersection reallignment to alleviate congestion and improve safety. Project includes median, striping, turning lanes, pedestrian crossing and signalization.		



FY	Source	Phase	Federal	Match	Total
III	TMA	CON	\$1,493,640	\$373,410	\$1,867,050
Project Totals			\$1,493,640	\$373,410	\$1,867,050

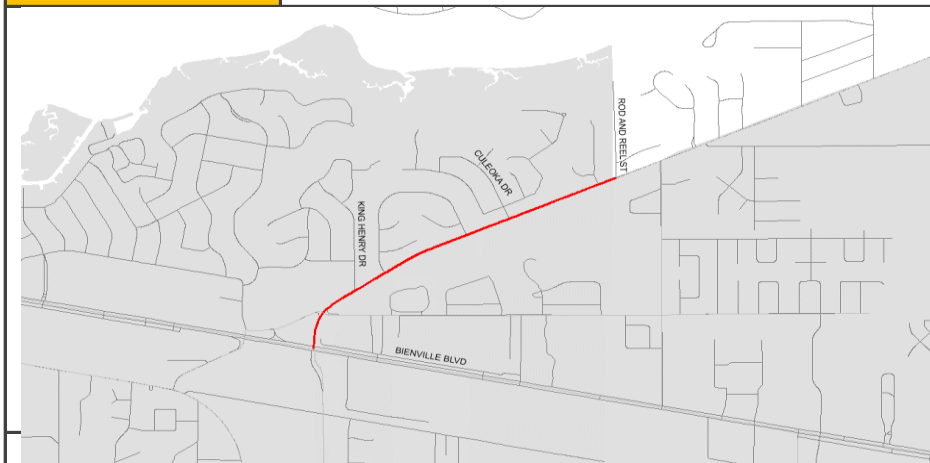
Project Notes					
Action	Add to TIP	Date	8/25/2016	Type	Amend
Remarks	\$1,493,640 STP				
Action	Change Year	Date	9/25/2014	Type	Mod
Remarks	Move from FY17 to FY18				
Action	Change Year	Date	12/10/2015	Type	Mod
Remarks	Move from FY18 to FY19				
Action	Change Year	Date	2/23/2017	Type	Mod
Remarks	Move from FY19 to FY20				
Action	Change Year	Date	10/3/2019	Type	Mod
Remarks	Move from FY20 to FY21				
Action		Date		Type	
Remarks					
Action		Date		Type	
Remarks					
Action		Date		Type	
Remarks					
Action		Date		Type	
Remarks					

Mississippi Gulf Coast Metropolitan Planning Organization

FY2021-2024 Transportation Improvement Program (TIP)



County	Jackson	Agency	Ocean Springs
Improvement Type	Reconstruction and Intersection	Route	Ocean Springs Road
Project Termini	Hwy 90 to Rod and Reel Street		
Project Description	Reconstruction to include medians, turning bays and bike/ped amenities. Construct a roundabout to improve traffic flow and safety at Groveland Road intersection serving as an entry point into the City and hospital traffic. Project Purpose: Traffic flow.		



FY	Source	Phase	Federal	Match	Total
2022	TMA	CON	\$3,390,830	\$847,707	\$4,238,537
Project Totals			\$3,390,830	\$847,707	\$4,238,537

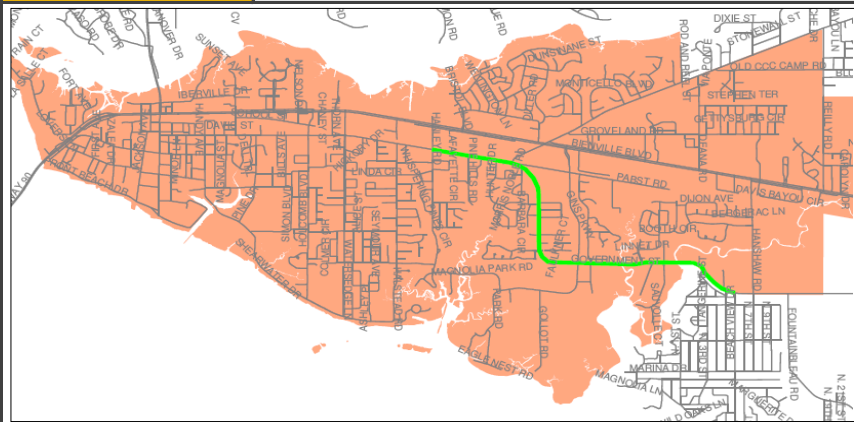
Project Notes					
Action	Add to TIP	Date	8/23/2018	Type	Amend
Remarks	\$2,258,400 STBG				
Action	adjust	Date	11/3/2020	Type	Mod
Remarks	Combined with Groveland intersection project - \$1,132,430				
Action	Change Terminus	Date	5/28/2021	Type	Amend
Remarks	Change from Culeoka Dr to Rod and Reel St				
Action		Date		Type	
Remarks					
Action		Date		Type	
Remarks					
Action		Date		Type	
Remarks					
Action		Date		Type	
Remarks					
Action		Date		Type	
Remarks					

Mississippi Gulf Coast Metropolitan Planning Organization

FY2021-2024 Transportation Improvement Program (TIP)



County	Jackson	Agency	Ocean Springs
Improvement Type	Pedestrian	Route	Government Street
Project Termini	Hanley Road to Hanshaw Road		
Project Description	Improved sidewalks and pedestrian bridge over bayou		



FY	Source	Phase	Federal	Match	Total
2014	TMA	CON	\$827,079	\$206,769	\$1,033,848
2021	TMA	CON	\$230,000	\$57,500	\$287,500
Project Totals			\$1,057,079	\$264,269	\$1,321,348

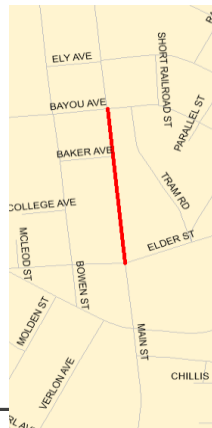
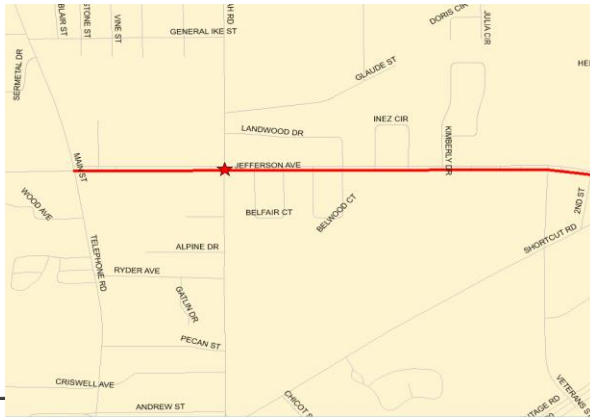
Project Notes					
Action	Added to TIP	Date	11/30/2011	Type	Amend
Remarks	\$889,679 STP				
Action	Termini Change	Date	1/1/2012	Type	Amend
Remarks	"Hanley Rd to Davis Bayou" to "Hanley Rd to Beachview Rd"				
Action	Termini Change	Date	10/1/2012	Type	Amend
Remarks	"Hanley Rd to Beachview Rd" to "Hanley Rd to Hanshaw Rd"				
Action	Change CON year	Date	9/1/2013	Type	Mod
Remarks	From FY2013 to FY2014				
Action	Funding increase	Date	4/1/2014	Type	Mod
Remarks	Add \$137,400 STP (signal) Add \$30,000 STP (sidewalks)				
Action	Break out PH II funds	Date	4/1/2021	Type	Mod
Remarks	Line item \$230,000 for PH II				
Action		Date		Type	
Remarks					
Action		Date		Type	
Remarks					
Action		Date		Type	
Remarks					
Action		Date		Type	
Remarks					

Mississippi Gulf Coast Metropolitan Planning Organization

FY2021-2024 Transportation Improvement Program (TIP)



County	Jackson	Agency	Moss Point
Improvement Type	Intersection	Route	Jefferson Avenue
Project Termini	at Macphelah Drive & Main Street		
Project Description	~800' of 5' sidewalk on Main Street and .9 mile on one side of Jefferson Street and intersection improvements at Macphelah Drive		



FY	Source	Phase	Federal	Match	Total
2022	Non-urb	CON	\$921,000	\$230,250	\$1,151,250
Project Totals			\$921,000	\$230,250	\$1,151,250

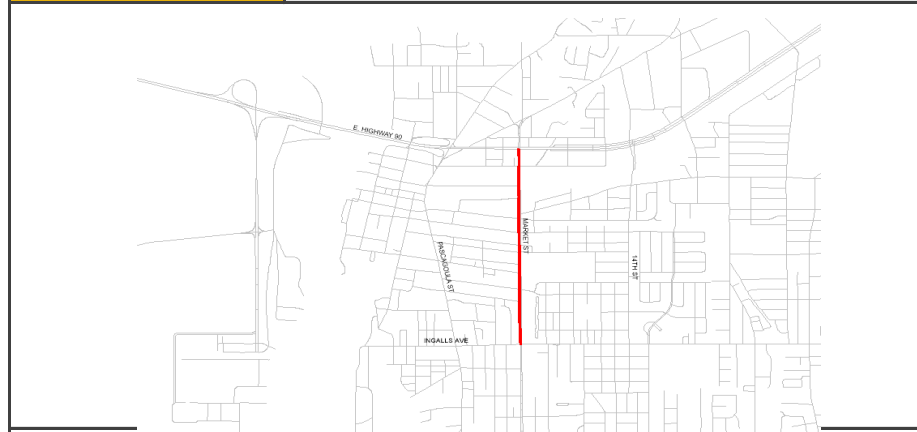
Project Notes					
Action	Add to TIP	Date	8/23/2018	Type	Amend
Remarks	Project #1 added as Jefferson St Sidewalks - \$412,000				
Action	Add to TIP	Date		Type	
Remarks	Project #2 added as Macphelah Dr Intersection - \$509,000				
Action	Combined projects	Date	7/16/2019	Type	Mod
Remarks	Combined Projects #1 & #2 - \$921,000				
Action		Date		Type	
Remarks					
Action		Date		Type	
Remarks					
Action		Date		Type	
Remarks					
Action		Date		Type	
Remarks					
Action		Date		Type	
Remarks					

Mississippi Gulf Coast Metropolitan Planning Organization

FY2021-2024 Transportation Improvement Program (TIP)



County	Jackson	Agency	Pascagoula
Improvement Type	Intersection	Route	Market Street
Project Termini	US 90 to Ingalls Avenue		
Project Description	Improve intersection and pedestrian traffic control along the Market Street corridor		



FY	Source	Phase	Federal	Match	Total
2020	HIPF	CON	\$745,000	\$186,000	\$931,000
Project Totals			\$745,000	\$186,000	\$931,000

Project Notes					
Action	Add to TIP	Date	7/27/2019	Type	Amend
Remarks	\$745,000 Highway Infrastructure Program Funds				
Action		Date		Type	
Remarks					
Action		Date		Type	
Remarks					
Action		Date		Type	
Remarks					
Action		Date		Type	
Remarks					
Action		Date		Type	
Remarks					
Action		Date		Type	
Remarks					
Action		Date		Type	
Remarks					

Mississippi Gulf Coast Metropolitan Planning Organization

FY2021-2024 Transportation Improvement Program (TIP)



County	Jackson	Agency	Ocean Springs
Improvement Type	Mutiuse pathway	Route	East Beach Drive
Project Termini	Holcomb Boulevard to Halstead Road		
Project Description	Safe access for bicyclists and pedestrians		



FY	Source	Phase	Federal	Match	Total
2021	TMA	CON	\$384,000	\$96,000	\$480,000
Project Totals			\$384,000	\$96,000	\$480,000

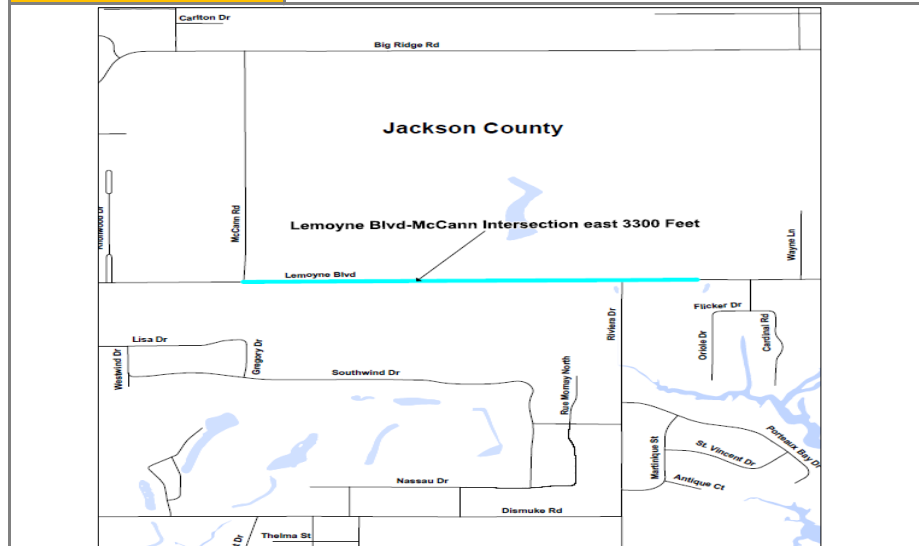
Project Notes					
Action	Add to TIP	Date	8/23/2018	Type	Amend
Remarks					
Action		Date		Type	
Remarks					
Action		Date		Type	
Remarks					
Action		Date		Type	
Remarks					
Action		Date		Type	
Remarks					
Action		Date		Type	
Remarks					
Action		Date		Type	
Remarks					

Mississippi Gulf Coast Metropolitan Planning Organization

FY2021-2024 Transportation Improvement Program (TIP)



County	Jackson	Agency	Jackson County
Improvement Type	Sidewalks	Route	Lemoyne Boulevard
Project Termini	McCann Road to 3300 feet to the east		
Project Description	New sidewalks from new signalized intersection. Project Length: .64 mile		



FY	Source	Phase	Federal	Match	Total
2022	TMA	CON	\$262,151	\$65,538	\$327,688
Project Totals			\$262,151	\$65,538	\$327,688

Project Notes					
Action	Add to TIP	Date	8/1/2020	Type	Amend
Remarks	\$262,151				
Action		Date		Type	
Remarks					
Action		Date		Type	
Remarks					
Action		Date		Type	
Remarks					
Action		Date		Type	
Remarks					
Action		Date		Type	
Remarks					
Action		Date		Type	
Remarks					

Mississippi Gulf Coast Metropolitan Planning Organization

FY2021-2024 Transportation Improvement Program (TIP)

County	Jackson	Agency	Pascagoula
Improvement Type	Safety - Lighting	Route	US 90
Project Termini	Pascagoula Street to Industrial Road exit		
Project Description	Lighting project to improve safety and promote econmic development by delivering a well-lit and welcoming environment.		



FY	Source	Phase	Federal	Match	Total
2022	Non-urb	CON	\$1,021,913	\$255,478	\$1,277,391
Project Totals			\$1,021,913	\$255,478	\$1,277,391

Project Notes					
Action	Add to TIP	Date	10/22/2020	Type	Amend
Remarks	\$1,021,913				
Action		Date		Type	
Remarks					
Action		Date		Type	
Remarks					
Action		Date		Type	
Remarks					
Action		Date		Type	
Remarks					
Action		Date		Type	
Remarks					
Action		Date		Type	
Remarks					



Mississippi Gulf Coast Metropolitan Planning Organization

FY2021-2024 Transportation Improvement Program (TIP)

Safety Group

Group Description

The Safety Group is used to fund projects in the MPO's Get2B Safety Program. Gulf Regional Planning Commission serving as staff for the MPO provides planning work described in its Unified Planning Work Program (UPWP) that is used to identify projects to be developed and funded with the Safety Group. The Mississippi Gulf Coast MPO will set aside \$500,000 or 10% (whichever is less) of its annual allocation of STBG funds for projects to enhance the safe mobility of all modes of transportation on the Mississippi Gulf Coast. MPO staff works with FHWA to develop projects that will be eligible for the Federal share payable to amount to 100 percent of the cost of construction of such projects as described in 23 U.S.C. 120 (c) and 23 CFR 652.9. Projects will be selected by GRPC for funding through this program, coordinated with the applicable local public agency and initiated as needed without the requirement of a TIP amendment.

Agency	Project Description	Scope	Date added	Fed. Funds	TIP year
CTA	Traffic Signal Priority - Various intersections in Gulfport and Biloxi	Intersection	7/20/2017	\$500,000	2021
GRPC	Safety Projects PH II	Safety		\$1,000,000	2021
GRPC	Safety Projects PH II	Safety		\$43,907	2021

Projects identified for group funding allocation have no significant environmental impact and therefore are deemed Categorical Exclusions.



Mississippi Gulf Coast Metropolitan Planning Organization

FY2021-2024 Transportation Improvement Program (TIP)

Studies/Projects Group

Project "Scoping" is the phase in the Project Development process that moves a recognized problem from an idea through the development of alternatives and environmental screening.

Agency	Project Description	Phase	Funding	Date added	Fed. Funds	TIP year
D'Iberville	Sidewalk & Pedestrian Study	Scoping	TMA - STBG	8/23/2018	\$80,000	2019
Diamondhead	East Aloha	Scoping	TMA - STBG		\$16,000	2019
Harrison County	Clark St Bridge Replacement	Bridge	TMA - STBG	3/1/2018	\$189,896	2020
Ocean Springs	Wayfinding Study	Scoping	TMA - STBG	8/23/2018	\$25,606	2020
Harrison County	Active Living Initiative	Scoping	TMA - STBG	8/23/2018	\$120,000	2020
Diamondhead	Commercial District Road Study	Scoping	TMA - STBG	8/23/2018	\$60,000	2020
Bay St. Louis	Multiuse Pathway Study	Scoping	TMA - STBG	8/23/2018	\$8,000	2020
Gulfport	US 49 Pedestrian Safety Study	Scoping	TMA - STBG	11/29/2018	\$120,000	2020
Moss Point	Interstate Commerce Area Study	Scoping	TMA - STBG	3/1/2019	\$80,000	2020
Ocean Springs	OS Road / Steelman Road	Scoping	TMA - STBG	12/5/2019	\$48,000	2021
Biloxi	Atkinson Road	Scoping	TMA - STBG	12/5/2019	\$15,000	2021
Gulfport	Pavement Management	Scoping	TMA - STBG	12/5/2019	\$80,000	2021
Bay St. Louis	City ADA Improvements	Scoping	TMA - STBG	12/5/2019	\$28,000	2021
Jackson County	Hwy 609	Scoping	TMA - STBG	12/5/2019	\$112,579	2021
Long Beach	Beatline Parkway	ENV	TMA - STBG	12/5/2019	\$150,000	2022
			Requested Federal Earmark	7/12/2021	\$150,000	Illustrative
Ocean Springs	Downtown Parking Study	Scoping	TMA - STBG	12/5/2019	\$40,000	2021
Gautier	Railroad Crossing Overpass	Scoping	TMA - STBG	12/5/2019	\$56,888	2021
Long Beach	5 Points Intersection	Scoping	TMA - STBG	12/5/2019	\$96,000	2021
Biloxi	Point Cadet Improvements	Scoping	TMA - STBG	12/5/2019	\$30,000	2021
Diberville	Mallet Road & Lamey Bridge Road	Scoping	TMA - STBG	6/4/2020	\$80,000	2021
Diamondhead	City Wayfinding Study	Scoping	TMA - STBG	5/28/2021	\$58,500	2022

Mississippi Gulf Coast Metropolitan Planning Organization
FY2021-2024 Transportation Improvement Program (TIP)

Transportation Alternatives (TA) Group

The FAST Act eliminates the MAP-21 Transportation Alternatives Program (TAP) and replaces it with a set-aside of Surface Transportation Block Grant (STBG) program funding for transportation alternatives (TA). These set-aside funds include all projects and activities that were previously eligible under TAP, encompassing a variety of smaller-scale transportation projects such as pedestrian and bicycle facilities, recreational trails, safe routes to school projects, community improvements such as historic preservation and vegetation management, and environmental mitigation related to stormwater and habitat connectivity.

[illegible]



Mississippi Gulf Coast Metropolitan Planning Organization

FY2021-2024 Transportation Improvement Program (TIP)

Federal Transit Administration (FTA) Funds

FY	Projcet	Fund Source	Agency	FTA	Local	Total
2021	Operating Assistance For Period 10/01/20 Through 9/30/21	Sec 5307	CTA	\$2,550,000	\$2,550,000	\$5,100,000
2021	Preventive Maintenance	Sec 5307, 5310	CTA	\$1,440,000	\$360,000	\$1,800,000
2021	Marketing/Planning	Sec 5307	CTA	\$240,000	\$60,000	\$300,000
2021	Computer Equipment	Sec 5307	CTA	\$20,000	\$5,000	\$25,000
2021	Shop Equipment	Sec 5307	CTA	\$16,000	\$4,000	\$20,000
2021	ADA Operating Expense	Sec 5307	CTA	\$312,000	\$78,000	\$390,000
2021	Transit Enhancements	Sec 5307	CTA	\$80,000	\$20,000	\$100,000
2021	Facility Rehab & Renovations	Sec 5307	CTA	\$200,000	\$50,000	\$250,000
2021	Purchase Office Equipment	Sec 5307	CTA	\$16,000	\$4,000	\$20,000
2021	Purchase Farebox Equipment	Sec 5307	CTA	\$40,000	\$10,000	\$50,000
2021	Purchase Communication Equipment	Sec 5307	CTA	\$80,000	\$20,000	\$100,000
2021	Purchase Revenue Vehicles and Bus Equipment	Sec 5307, 5339 a/b/c, CARES ACT	CTA	\$1,572,000	\$393,000	\$1,965,000
2021	Purchase Support Vehicles	Sec 5307	CTA	\$36,000	\$9,000	\$45,000
2021	JARC Purchased Transportation	Sec 5307	CTA	\$375,000	\$0	\$375,000
2021	Mobility Manager	Sec 5307	CTA	\$48,000	\$12,000	\$60,000
2021	Maintain current vehicles in fleet purchase/upgrade/replace communication technology abd data service for tracking software	Sec 5310	JCCAC			
Totals				\$7,025,000	\$3,575,000	\$10,600,000



Mississippi Gulf Coast Metropolitan Planning Organization

FY2021-2024 Transportation Improvement Program (TIP)

Federal Transit Administration (FTA) Funds

FY	Projcet	Fund Source	Agency	FTA	Local	Total
2022	Operating Assistance For Period 10/01/21 Through 9/30/22	Sec 5307	CTA	\$2,700,000	\$2,700,000	\$5,400,000
2022	Preventive Maintenance	Sec 5307, 5310	CTA	\$1,520,000	\$380,000	\$1,900,000
2022	Marketing/Planning	Sec 5307	CTA	\$240,000	\$60,000	\$300,000
2022	Computer Equipment	Sec 5307	CTA	\$20,000	\$5,000	\$25,000
2022	Shop Equipment	Sec 5307	CTA	\$16,000	\$4,000	\$20,000
2022	ADA Operating Expense	Sec 5307	CTA	\$312,000	\$78,000	\$390,000
2022	Transit Enhancements	Sec 5307	CTA	\$80,000	\$20,000	\$100,000
2022	Facility Rehab & Renovations	Sec 5307	CTA	\$200,000	\$50,000	\$250,000
2022	Purchase Office Equipment	Sec 5307	CTA	\$16,000	\$4,000	\$20,000
2022	Purchase Farebox Equipment	Sec 5307	CTA	\$40,000	\$10,000	\$50,000
2022	Purchase Communication Equipment	Sec 5307	CTA	\$80,000	\$20,000	\$100,000
2022	Purchase Revenue Vehicles	Sec 5307, 5339 a/b/c	CTA	\$800,000	\$200,000	\$1,000,000
2022	Purchase Support Vehicles	Sec 5307	CTA	\$36,000	\$9,000	\$45,000
2022	JARC Purchased Transportation	Sec 5307	CTA	\$375,000	\$0	\$375,000
2022	Mobility Manager	Sec 5307	CTA	\$48,000	\$12,000	\$60,000
Totals				\$6,483,000	\$3,552,000	\$10,035,000



Mississippi Gulf Coast Metropolitan Planning Organization

FY2021-2024 Transportation Improvement Program (TIP)

Federal Transit Administration (FTA) Funds

FY	Projcet	Fund Source	Agency	FTA	Local	Total
2023	Operating Assistance For Period 10/01/22 Through 9/30/23	Sec 5307	CTA	\$2,800,000	\$2,800,000	\$5,600,000
2023	Preventive Maintenance	Sec 5307, 5310	CTA	\$1,600,000	\$400,000	\$2,000,000
2023	Marketing/Planning	Sec 5307	CTA	\$240,000	\$60,000	\$300,000
2023	Computer Equipment	Sec 5307	CTA	\$20,000	\$5,000	\$25,000
2023	Shop Equipment	Sec 5307	CTA	\$16,000	\$4,000	\$20,000
2023	ADA Operating Expense	Sec 5307	CTA	\$312,000	\$78,000	\$390,000
2023	Transit Enhancements	Sec 5307	CTA	\$80,000	\$20,000	\$100,000
2023	Facility Rehab & Renovations	Sec 5307	CTA	\$200,000	\$50,000	\$250,000
2023	Purchase Office Equipment	Sec 5307	CTA	\$16,000	\$4,000	\$20,000
2023	Purchase Farebox Equipment	Sec 5307	CTA	\$40,000	\$10,000	\$50,000
2023	Purchase Communication Equipment	Sec 5307	CTA	\$80,000	\$20,000	\$100,000
2023	Purchase Revenue Vehicles	Sec 5307, 5339 a/b/c	CTA	\$800,000	\$200,000	\$1,000,000
2023	Purchase Support Vehicles	Sec 5307	CTA	\$36,000	\$9,000	\$45,000
2023	JARC Purchased Transportation	Sec 5307	CTA	\$375,000	\$0	\$375,000
2023	Mobility Manager	Sec 5307	CTA	\$48,000	\$12,000	\$60,000
Totals				\$6,663,000	\$3,672,000	\$10,335,000



Mississippi Gulf Coast Metropolitan Planning Organization

FY2021-2024 Transportation Improvement Program (TIP)

Federal Transit Administration (FTA) Funds

FY	Projcet	Fund Source	Agency	FTA	Local	Total
2024	Operating Assistance For Period 10/01/23 Through 9/30/24	Sec 5307	CTA	\$2,850,000	\$2,850,000	\$5,700,000
2024	Preventive Maintenance	Sec 5307, 5310	CTA	\$1,680,000	\$420,000	\$2,100,000
2024	Marketing/Planning	Sec 5307	CTA	\$240,000	\$60,000	\$300,000
2024	Computer Equipment	Sec 5307	CTA	\$20,000	\$5,000	\$25,000
2024	Shop Equipment	Sec 5307	CTA	\$16,000	\$4,000	\$20,000
2024	ADA Operating Expense	Sec 5307	CTA	\$312,000	\$78,000	\$390,000
2024	Transit Enhancements	Sec 5307	CTA	\$80,000	\$20,000	\$100,000
2024	Facility Rehab & Renovations	Sec 5307	CTA	\$200,000	\$50,000	\$250,000
2024	Purchase Office Equipment	Sec 5307	CTA	\$16,000	\$4,000	\$20,000
2024	Purchase Farebox Equipment	Sec 5307	CTA	\$40,000	\$10,000	\$50,000
2024	Purchase Communication Equipment	Sec 5307	CTA	\$80,000	\$20,000	\$100,000
2024	Purchase Revenue Vehicles	Sec 5307, 5339 a/b/c	CTA	\$800,000	\$200,000	\$1,000,000
2024	Purchase Support Vehicles	Sec 5307	CTA	\$36,000	\$9,000	\$45,000
2024	JARC Purchased Transportation	Sec 5307	CTA	\$375,000	\$0	\$375,000
2024	Mobility Manager	Sec 5307	CTA	\$48,000	\$12,000	\$60,000
Totals				\$6,793,000	\$3,742,000	\$10,535,000

**FY 2021-2024 Transportation Improvement Program
Federal Highway Administration
Eastern Federal Lands Highway Division**

MISSISSIPPI

Project	Program FY	State	County	Park, Refuge, Forest or Other Partner Agency	Description	Type of Work	Primary Fund Source	Total Programmed Amount	Funds from Title	Delivered By	Status	Congressional District	FLMA Region
NP_GUIS_15(3)	2021	MS	Jackson	Gulf Islands National Seashore	Safety improvements on Park Road - paved shoulders, guardrail	NEW	REIMB	\$5,000,000.00	Title 54	EFLHD	In Design	MS-04	NPS_SE
NATR_BMS_FY18(1)	2018	ZZ	Multiple	Multiple	Bridge Preventive Maintenance Projects	BRRH	FLTP	\$750,000.00	Title 23	EFLHD	Planned	Various	NPS_SE
NATR_BMS_FY19(1)	2019	ZZ	Multiple	Multiple	Bridge Preventive Maintenance Projects	BRRH	FLTP	\$500,000.00	Title 23	EFLHD	Planned	Various	NPS_SE
NP_SER_BMS_FY18(2)	2019	ZZ	Various	Various	FY18 Regionwide BMS, VNM Park 11 Structures	BRRH	FLTP	\$350,000.00	Title 23	EFLHD	Planned	Various	NPS_SE
SER_PMS_FY18(1)	2019	ZZ	Various	Various	Pavement Preservation Project for Small Parks	2R	FLTP	\$2,000,000.00	Title 23	EFLHD	Planned	Various	NPS_SE
SER_PMS_FY19(1)	2019	ZZ	Various	Various	FY19 Regionwide Pavement Preservation Projects	2R	FLTP	\$2,000,000.00	Title 23	EFLHD	Planned	Various	NPS_SE

APPENDIX

MS Gulf Coast TIP: Updates, Amendments and Modifications Tracker

October 2013 Amendments/Modifications:

- Gulfport – Pass Road Traffic Signals/16 intersections - \$444,000 STP
- Jackson County – Hwy 609/Old Fort Bayou Rd - \$1,493,640 STP
- D'Iberville – Big Ridge Rd & D'Iberville Blvd/1-10, Dewey Lawrence, South - \$2,938,778 STP
- Jackson County – Lemoyne Blvd/Brittany Ave - \$308,000 STP
- Gulfport – Courthouse Rd/Pass Rd to US 90 - \$2,683,532 STP
- Bay St. Louis – Old Spanish Trail Lighting/Main St to City Limits - \$640,640 STP

Increase Funding (amendment)

- Biloxi - Popps Ferry /Cedar Lake to D'Iberville Blvd - Add \$5,000,000 STP for a total of \$7,204,800 STP
- Pascagoula – Hospital Rd/Old Mobile Hwy to US 90 – Add \$1,798,817 STP for a total of \$2,293,217 STP
- Gautier – Martin Bluff Rd/Gautier-Vancleave Rd to Frontage Rd – Add \$2,392,005 STP for a total of \$3,328,005 STP

Remove Project (amendment)

- Pascagoula – Ingalls Ave/Chicot Rd. & Martin St. \$396,000 STP
- Harrison County – Hwy 605 Frontage Rd./Lorraine Rd to 2000' North - \$726,800 STP
- D'Iberville – Automall Pkwy & Rodriguez St./D'Iberville Blvd to I-110 - \$200,000 STP
- Gulfport – Seaway Rd Pedestrian Path/Three Rivers Rd to Lorraine Rd - \$788,304 STP

Modifications

- Biloxi - Popps Ferry Rd/Cedar Lake Rd to D'Iberville Blvd – Move from FY 2013 to FY 2015
- Gulfport – 28th St/34th Ave to 23rd Ave – Move from FY 2012 to FY 2014
- Jackson County – Old Fort Bayou Rd/Yellow Jacket Rd - Move from FY 2014 to FY 2015
- Biloxi – Popps Ferry Road Extension/Pass Road to US 90 – Move from FY 2012 to FY 2018
- Gulfport – Seaway Rd/Three Rivers Rd to 1 mile east – Move from FY 2013 to FY 2014
- Pascagoula – Hospital Rd/Old Mobile Hwy to US 90 – Move from FY 2015 to FY 2016
- Bay St Louis – Old Spanish Trl/City Limits to Main St – Move from FY 2013 to FY 2014
- Gautier – Martin Bluff Rd/Gautier-Vancleave Rd to Frontage Rd - Move from FY 2013 to FY 2016
- Gulfport - Deadeaux Rd/ Three Rivers rd to Hwy 605 – Move from FY 2013 to FY 2015
- Gulfport – Ship Island Terminal Project/ Bert Jones Yacht Basin – Move from FY 2013 to FY 2015
- Bay St. Louis – US 90 Pedestrian Path/BSL Bridge to Main St - Move from FY 2013 to FY 2015
- Ocean Springs – Government St/Hanley Rd to Hanshaw Rd - Move from FY 2013 to FY 2014
- D'Iberville – D'Iberville Blvd/Central Ave to Automall Pkwy - Move from FY 2013 to FY 2015
- Pass Christian – Cedar Ave/RR to US 90 - Move from FY 2015 to FY 2018

- Biloxi – Reynoir St and Jackson St/Downtown Biloxi – Move from FY 2014 to FY 2015
- Harrison County – Biloxi River Bridge/Lorraine Rd – Move from FY 2013 to FY 2014
- Gautier – Hwy 57/Brown Rd - Move from FY 2013 to FY 2015
- Moss Point – Main St/South to Jefferson - Move from FY 2013 to FY 2015
- Moss Point – Second St/East Moss Point - Move from FY 2014 to FY 2015

March 2014 Amendments/Modifications:

- Ocean Springs – Porter Ave/Martin Avenue to Howard Ave – Move from FY 2013 to FY 2018
- Gulfport – Deadeaux Road/Three Rivers Rd to Hwy 605 – Move from FY 2015 to FY 2016
- Bay St. Louis – US 90 Pedestrian Path/BSL Bridge to Main St – Move from FY 2015 to FY 2016
- D'Iberville – D'Iberville Blvd/Central Ave to Automall Pkwy - Move from FY 2015 to FY 2016
- Harrison County – Biloxi River Bridge/Lorraine Rd – Change from FY 2014 to FY 2015
- Gautier – Hwy 57/Brown Road - Change from FY 2015 to FY 2016
- Gulfport – Pass Road Signal System/16 intersections - Change from FY 2014 to FY 2015
- Gulfport – Courthouse Rd/Pass Rd to US 90 – Change from FY 2018 to FY 2017
- D'Iberville – D'Iberville Blvd and Big Ridge Rd/ I-10 ramps – Change from FY 2015 to FY 2016
- Bay St Louis – Old Spanish Trl/Main St to Waveland Limits - Change from FY 2015 to FY 2016

April 2014 Amendments/Modifications:

- Ocean Springs – Government St - Hanley to Hanshaw add funds - \$167,300

June 2014 Amendments/Modifications:

Amendments

- Ocean Springs – Porter Avenue/Martin Avenue to Howard Avenue. Remove Project.
- Jackson County – Hwy 57/Old Spanish Trl to US 90. Remove Project.
- CTA – Purchase replacement mobile surveillance equipment. \$128,000 (FTA) \$32,000 (CTA) Add Project.
- CTA – Expansion of the Gulfport Transit Center Intermodal Hub. \$6,560,000 (FTA) \$1,640,000 (CTA) Add Project.

October 2014 Amendments/Modifications:

Modifications

- Advance construction strategy was implemented

March 2015 Amendments/Modifications:

Modifications

- Added \$1,550,000 in TE funds under the TAP group in 2015

June 2015 Amendments/Modifications:

Modifications

- Harrison Co.–Biloxi River Bridge. Move \$3,000,000 STP into FY14 from FY15. Leave balance of \$1,211,197 STP in FY16.
- Gautier - Martin Bluff Rd. Add ROW Phase. \$3,199,682 Fed. Earmark
- CTA – Change funding fiscal year. Expansion of Gulfport Transit Center Intermodal Hub. Move and split \$6,560,000 in FY 2015 to FY 2016 (\$3,280,000) and FY 2017(\$3,280,000).

Group Project Adjustments

- D'Iberville – Add project to Safety Group. D'Iberville Blvd and Boney Ave. Traffic signal. \$125,000 STP at 100%.
- D'Iberville – Remove project from Bike/Ped/Transit Group. D'Iberville Blvd/Central Ave to Automall Pkwy. \$97,002 STP
- GRPC – Adjust funding for safety projects to reflect each county's MOU.
- Long Beach – Added study. Pineville Rd. \$60,000
- Diamondhead – Added study. Circulation. \$60,000

Amendments

Remove from TIP

- Gulfport – Ship Island Terminal Project. \$560,301 STP
- Pass Christian – Cedar Ave/ Railroad to US 90. \$163,570 STP

Add to TIP

- Waveland - Waveland Avenue Sidewalk Project: \$1,264,000 STP
- Gulfport - Landon Road Widening Project PH I: \$1,000,000 STP
- Gulfport - Airport Road Improvements: \$550,000 STP
- Pass Christian - North Street Sidewalks: \$452,800 STP

October 2015 Amendments/Modifications:

Amendment: Added to TIP

- Biloxi - Popps Ferry Road. Submarine Cable. \$749,000 STP (Request made by MDOT)

November 2015 Amendments/Modifications:

- Move Moss Point Main Street sidewalks project from FY17 to FY18
- Move Jackson County Hwy 609 @ Old Fort Bayou from FY18 to FY19

- Move Pascagoula Hospital Road from FY17 & 18 to FY16 & 17
- Move Biloxi Pops Ferry Extension from FY19 to FY18
- Adjust D'Iberville Big Ridge Road project AC funding split
- Move Gulfport Courthouse Road project from FY17&18 to FY16&17
- Move Gautier Martin Bluff Road project from FY16 & 17 to FY17 &18
- Adjust Biloxi River Bridge AC funding split
- Move Jackson County Lemoyne Blvd @ Brittany Ave from FY16 to FY17

June 2016 Amendments and Modifications

- Add MDOT project: Bridge Group #107213-10100 (FY2016) I-10 Widening from Hwy 57 to the Alabama State Line. (Funding for preliminary engineering phase – total \$750,000 (\$600,000 Federal, \$150,000 State/Local))
- Increase Funds \$259,260 for Gulfport's Dedeaux Road project
- Increase Funds \$676,270 for Gulfport's Courthouse Road project
- Increase Funds \$1,208,133 for Gulfport's Landon Road project
- Remove Gautier Hwy 57 & Brown Road Signal Project at LPA request
- Remove D'Iberville Big Ridge and D'Iberville Blvd Project at LPA request
- Add Waveland, Nicholson Ave overlay and widening, \$800,000 STP
- Add Diamondhead, Golf Club Drive Roundabout, \$200,00 STP
- Add Diamondhead, I-10 interchange lighting, \$400,00 STP
- Add Long Beach, Pineville Road sidewalks, \$1,000,000 STP
- Add D'Iberville Pops Ferry Realignment, \$2,938,779 STP
- Add Jackson Co. Signal at Lemoyne and McCann, \$360,000 STP
- Add Jackson Co. Yellow Jacket Street sidewalks, \$160,000 TAP
- Add Gulfport Seaway Road Multiuse Pathway, \$788,304 TAP
- Add Bay-Waveland School District Pine street sidewalks, \$244,000 TAP

Coast Transit Authority (CTA) Amendment(s):

- Sec 5307 Preventive Maintenance Increase to total \$1,663,000 (federal \$1,330,400, local \$332,600)
- Sec 5307 JARC Purchased Transportation Increase to total \$380,000 (federal \$380,000, local \$0)
- Sec 5310 New Freedom Services Increase to total \$840,000 (federal \$672,000, local \$168,000)
- Sec 5307 Mobility Manager Increase to total \$75,000 (federal \$60,000, local \$15,000)
- Sec 5307 Gulfport Intermodal Hub Increase to total \$8,345,000 (federal \$6,676,000, local \$1,669,000)
- Add New Project: Sec 5339 Gulfport Hwy 90 Tram Bridge Project Total \$9,856,000 (federal \$7,884,800, local \$1,971,200)

September 2016 Amendments/Modifications:

- Lemoyne and Brittany (Jackson Co.) received additional funds and was moved to 2016
- Courthouse Road (Gulfport) received additional funds and was moved to 2016
- Dedeaux Road (Gulfport) received additional funds and was moved to 2016
- Main Street (Moss Point) sidewalks were moved into 2016
- Hospital Road (Pascagoula) was divided into two projects (Phase 1 in FY16, Phase 2 in FY17)

February 2017 Amendments and Modifications**Amendments:**

- Remove Bay St Louis, Old Spanish Trail lighting (\$640,640 STP)
- Remove Bay St Louis, Hwy 90 multiuse pathway (\$164,800 STP)
- Add Diamondhead, Aloha Dr widened shoulder (\$136,400 TAP)
- Add Diamondhead, Noma Dr multiuse pathway (\$430,400 TAP)
- Add Diamondhead, Golf Club Dr sidewalk extension (\$400,000 STP)
- Add Ocean Springs, Porter Ave bike/ped improvements (\$930,000 STP)
- Add Gulfport, Ship Island Ferry program upgrades (\$1,156,913 Earmark)
- Add Gulfport, Hwy 90 and 20th Ave Improvements (\$507,169 STP)
- Funding Increase, Gulfport, Dedeaux Rd by \$1,573,635 STP in FY17
- Funding Increase, Gulfport, Courthouse Rd by \$623,598 STP in FY17

Coast Transit Authority (CTA) Amendment(s):

- CTA Funding Increase: Computer Equipment, Sec 5307 increase from \$16,000 to \$24,000
- CTA Additional Funds: Expand Gulfport Multimodal Hub, Sec 5307 \$8,878,408 FY18
- CTA Additional Funds: Gulfport/Hwy 90 Bike/Ped/Tram Bridge, Sec 5339 \$8,925,500 FY18

Modifications:

- Bay-Waveland School District, Pine Street moved FY17 to FY18
- Gulfport, Seaway Road moved from FY17 to FY18
- Gulfport, Airport Road moved FY17 to FY19
- Jackson Co, Lemoyne/McCann moved from FY17 to FY18
- Jackson Co, Hwy 609 & Old Fort Bayou moved from FY19 to FY20
- Jackson Co, St. Martin N Elementary moved from FY20 to FY18
- D'Iberville Boney/D'Iberville Blvd moved from FY17 to FY18

- D'Iberville Popp's Ferry Realignment advance construction over FY18 and FY19
- Biloxi Popp's Ferry Extension advance construction over FY18 and FY19
- Diamondhead, Golf Club Drive Roundabout moved from FY18 to FY17
- Waveland, Waveland Ave moved from FY19 to FY18
- Long Beach, Pineville Road moved from FY20 to FY17

May 2017 Amendments & Modifications

Amendments:

- Long Beach, Changed Pineville Road project termini from Alexander Road to Harper-McCann School
- ~~Waveland, Changed Waveland Ave project termini from Dubuc Lane to the city park south of CSX RR tracks~~ *City elected not to change termini*
- Gulfport, Add Ship Island Ferry Terminal Improvement Project, Earmark Funds \$1,156,913

Modifications:

- Pascagoula, Decrease Hospital Road Phase 2 FY17 STP/Non-urban funds by \$142,274, total is \$1,250,943
- Pascagoula, Increase Hospital Road Phase 1 FY16 STP/Non-urban funds by \$356,766, total is \$1,256,766
- Biloxi, move Popp's Ferry Extension from FY18/19 to FY19/20
- Gulfport, Add \$383,000 STP to Courthouse Road in FY17
- Hancock Co, Change Beach Access Study termini from Buccaneer State Park to Lakeshore Drive
- GRPC, Add STP group funds to Get To B safety projects, phase 2 development \$150,000
- GRPC, Add STP group funds to Get To B professional development safety series \$12,000
- Jackson Co, Add STP group funds to the Countywide Bike Plan Study, increase from \$80,000 to \$91,463

August 2017 Amendments & Modifications

Amendments:

- Removal of 3 Diamondhead projects from the TIP: Golf Cart Drive Sidewalks, Golf Cart Drive Roundabout & Noma Drive Multi-use Pathway
- Removal of Biloxi Sidewalk project on Reynoir and Jackson Streets

Modifications:

- Waveland, increase funds for FY17 Waveland Sidewalk Study from \$80,000 to \$82,641
- Biloxi, add the Biloxi Rail Corridor Study for \$150,000 FY18 STP-Study Group
- Pascagoula, Move Hospital Road Ph. 2 from FY17 to FY18
- Bay St Louis, Move Carrol Ave SRTS project from FY17 to FY18
- Diamondhead, Move I-10 lighting project to FY18 to align with MDOT reconstruction project
- Gautier, Remove Advance Construction for Martin Bluff Road, project in FY19
- D'Iberville, Remove Advance Construction for Popp's Ferry Realignment, project in FY20
- Long Beach, Termini Correction on Pineville Rd sidewalks from Royal Dr to Willow Creek Dr
- Biloxi, include TIP Page for Popp's Ferry Bridge replacement earmark funds (not programmed at this time)

December 2017 Amendments & Modifications

Amendments:

- Pascagoula, Increase Hospital Road Phase 1 funds by \$55,706, new total is \$1,312,472
- Pascagoula, Increase Hospital Road Phase 2 funds by \$293,852 and \$170,140 for RR costs, new total is \$1,714,935

Modifications:

- D'Iberville, Increase Boney Ave Signal STP allocation by \$73,500, new total is \$198,950
- Diamondhead, increase STP allocation for I-10 lighting project by \$48,485, new total is \$448,485

January 2018 Amendments & Modifications

Modifications:

- Gautier, Split project between FY19 & 20, adjust Non-Urban funds allocation to reflect available balances and shift remaining funding to STP-TMA as the funding source. All totals remain the same.
- GRPC Traffic Signal Prioritization Project funding increase from \$40,000 to \$50,000 in FY2018
- Jackson County, Shift the McCann Road Overpass Study from FY17 to FY18 to reflect actual obligation year
- Biloxi, Adjust ROW phase for Popps Ferry Road Extension. Shift from FY17 to FY18 and update earmark funds with available federal balances. ROW costs exceeded available federal funds, city is covering balance so match will exceed the original 20% match requirement.

March 2018 Amendments & Modifications

Amendments:

- Biloxi, Increase funds for Popps Ferry Submarine Cable by \$429,000. Increase from \$749,000 to \$1,178,000

Modifications:

- Diamondhead, Include a technical study on E. Aloha drive from Veterans to Kalani Drive in the FY18 study/projects group
- Pass Christian, include replacement of the Clark Ave. Bridge in the FY18 study/projects group

NOTE: at March 1 MPO-TPC meeting new TIP handbook policies were adopted which included a funding increase cap of 20%. This applies to project totals currently on the 2017-2020 TIP and original award totals of projects added to the TIP after March 1, 2018.

April 2018 Amendments & Modifications

Modification:

- Diamondhead, Increase funds for Interchange lighting project by \$89,697 STBG. Increase from \$448,485 to \$538,182 which maxes out their 20% increase capacity for this project.
- Jackson County, Move St. Martin N. Elementary sidewalk project from FY18 to FY19
- Pass Christian, Move Clark Street bridge replacement project from FY18 to FY19

August 2018 Amendments & Modifications

Amendments:

- Gulfport, Landon Road add \$751,867 STBG. Increase from \$2,208,133 to \$2,960,000 STBG
- Bay-Waveland School District, remove Pine St. sidewalk project from the TIP
- Gulfport, Add Dedeaux Rd (Ph. 2) Hwy 605 to Jessica Ln. to TIP Illustrative List \$3,760,000
- Bay St Louis, Add Beyer Dr. sidewalks from Carrol Ave. to Ranch St. in FY19, \$280,000 TAP
- Diamondhead, Add Montjoy Creek pathway from Diamondhead Drive to Rotten Bayou in FY 19, \$80,000 TAP
- Hancock Co., Add Washington St. Accessibility around S. Beach Blvd to FY19, \$240,000 TAP
- USM-Gulf Park, Add Gulf Park Dr. sidewalk from Bear Point to north of Hardy Hall in FY19, \$231,400 TAP
- Gulfport, Add Old Hwy 49 sidewalk from Oak Ln. to Robinson Rd. in FY20, \$160,000 TAP
- Gulfport, Add multiple school zone improvement projects to FY20, \$210,278 STBG
- Biloxi, Add Main St. and CSX rail line crossing to FY20, \$150,000 STBG
- Ocean Springs, Add East Beach Dr. from Holcomb Blvd. to Halstead Rd. to FY20, \$384,000 STBG (BPT)
- Bay St Louis, Add Washington St. sidewalks from Old Spanish Trl. To St. Francis St. in FY20, \$120,000 STBG (BPT)
- Ocean Springs, Add Ocean Springs Rd. from US 90 to Culeoka Dr. to FY21, \$2,258,400 STBG
- Moss Point, Add Jefferson St. sidewalks to include portion on Main St to 2nd St. to FY21, \$412,000 Non-urban STBG
- Harrison Co, Add Landon Rd. reconstruction from Coleman Rd. to 34th St. to FY21, \$1,360,000 STBG
- Long Beach, Add Pinville sidewalks ph. II from Harper McCaughan to Klondyke Rd. to FY21, \$400,000 STBG (BPT)
- Long Beach, Add Klondyke and Commission Rd. intersection to FY22, \$760,000 STBG
- Biloxi, Add Woolmarket Rd. sidewalks from Airport Rd. to Lorraine Rd. in FY22, \$880,000 TAP
- Moss Point, Add Macphelah Rd. and Jefferson St. intersection to FY22, \$509,000 Non-urban STBG
- Waveland, Change termini on Nicholson Ave. from Beach Blvd. to Jeff Davis Ave.

Modifications:

- Gulfport, Seaway Road add \$157,660 funds. Increase from \$788,304 to \$945,964.
- Biloxi Woolmarket Sidewalks – Changed funding source from TAP to STBG
- Gulfport, 20th Ave. move from FY18 to FY19 (obligated in FY18)
- Diamondhead, E. Aloha Dr. move from FY18 to FY19
- Biloxi, Popp's Ferry Extension. Move from FY 19 to FY22.
- Gulfport, Airport Rd. Move project to the Illustrative List

- Biloxi, move Popps Ferry bridge replacement to TIP Illustrative List, no MPO funds
- D'Iberville, move Popps Ferry Rd. from D'Iberville Blvd. to Belle St. to TIP Illustrative List \$2,938,780

October 2018 Modifications and Amendments

- Waveland - Waveland Ave Sidewalks, add \$210,560 TAP - From \$1,052,800 to \$1,263,360
- Biloxi - Cedar Lake Bridge - Move all funds for project into FY 22 \$300,000 +\$260,000

November 2018 Modifications and Amendments

- Diamondhead - Move East Aloha Study from FY18 to FY19 - **MODIFICATION**
- City of Gulfport - Approve US 49 Pedestrian Study - \$120,000 STBG \$150,000 Total - **MODIFICATION (11-29 TPC)**
- City of Gulfport - Courthouse Road - add \$192,000 from \$4,336,400 to \$4,528,400 - **MODIFICATION**

February 2019 Modifications and Amendments

- Clark Ave Bridge project LPA change from Pass Christian to Harrison County - **MODIFICATION**

March 2019 Modifications and Amendments

- Moss Point Interstate Commerce Area Study \$80,000 STP - **MODIFICATION by poll vote**
- City of Gulfport - Courthouse Road - add \$180,000 (for improvements to rough surface) **MODIFICATION**
- City of Gulfport - Landon Road - Break out RR work from approved total - **MODIFICATION**

April 2019 Modifications and Amendments

- Jackson County - St. Martin Elementary Sidewalks TAP - Increase from \$160,000 to \$192,000 **MODIFICATION**

May 2019 Modifications and Amendments

- MDOT - bridge replacement project on US 49 between O'Neal Road and School Road. \$5,000,000 TOTAL **AMENDMENT**

July 2019 Modifications and Amendments

- MDOT - add \$6,500,000 to MDOT's Gulf Coast UZA 2019 Safety Group - **MODIFICATION**
- Pascagoula - add Market Street Signalization Project. \$745,000 (HIPF) - **AMENDMENT**
- Moss Point - Combine Jefferson Ave intersection project and Jefferson Ave/Main sidewalk project. \$921,000 - **MODIFICATION**

October 2019 Modifications

Grouped Projects

- Harrison County. Clark Road Bridge project – Move from 2019 to 2020
- Ocean Springs. Wayfinding Study – Move from 2019 to 2020
- Gulfport. Electric Vehicle Charging Station Study – Remove from TIP
- Harrison County. Active Living Initiative – Move from 2019 to 2020
- Diamondhead. Commercial Corridor District Study – Move from 2019 to 2020
- Bay St. Louis. Multiuse Pathway Study – Move from 2019 to 2020
- Gulfport US 49. Pedestrian Safety Study – Move from 2019 to 2020
- Moss Point. Interstate Commerce Area Study – Move from 2019 to 2020
- Pass Christian. North Street Sidewalks – Move from 2019 to 2020
- GRPC/CTA. TSP project – Move from 2019 to 2020

Other Projects

- Gulfport. Landon Road – Move from \$1,751,867 from 2019 and added it to the \$1,208,133 already in 2020.
- Jackson County. Hwy 609 @ Fort Bayou Road – Move from 2020 to 2021
- Gulfport. Increase funding for Courthouse Road by \$210,566
- Biloxi. Breakout \$20,000 from existing allocation for RR Diagnostics

December 2019 Changes

Gulfport - Interconnecting Gulfport, BUILD Grant Award \$20,460,000 (Also add to the 2040 MTP.) **AMENDMENT**

Gautier - Martin Bluff Road (increase federal funding by \$1,442,074) **AMENDMENT**

CTA - Facility Rehab & Renovations (CTA garage renovation - increase FTA 2020 funding by \$792,989 from \$200,000 to \$992,989) **AMENDMENT**

GRPC Safety Projects

Harrison - \$362,000 to \$318,346 , Hancock - \$350,000 to \$331,996, Jackson - \$287,000 to \$393,565 **MODIFICATION**

Diamondhead - Increase Aloha Drive by \$27,280 to \$163,680 **MODIFICATION**

Added Studies approved at the TPC meeting on December 5th to Study Group **MODIFICATION**

Gulfport - Reduced Airport Road by \$402,915 and added the same amount to Courthouse Road **MODIFICATION**

Gulfport - 28th Street. Add \$117,719.19 STBG. From \$4,500,000 to \$4,617,719 STBG

February 2020 Changes

MDOT - Increased funding in the FY 2020 Bridge Group from \$125,000 to \$15,000,000

Gautier - Move RR crossing study from FY2020 to FY2021

March 2020 Changes

Gulfport BUILD project modification. Separate into phases

March 2020 Changes

Added funds to \$1,606 to Ocean Springs Wayfinding Study **MODIFICATION**

June 2020 Changes

Gulfport - Seaway Road Pathway increase from \$945,964 to 1,105,964 **MODIFICATION**

Gulfport - 20th Avenue increase from \$507,169 to \$607,169 **MODIFICATION**

Diberville - Mallet Road Study \$80,000

July 2020 Changes

Add TA funds for Martin Bluff Road in Gautier from Roy's Road to Little Bend Place for \$646,000 (federal) - \$808,000 (total) and a pedestrian connection plaza for Mississippi Gulf Coast Community College Jeff Davis Campus in Gulfport for \$244,356 (federal) and \$305,446 (total) **MODIFICATION**

I-10 Connector Road (Cook Road) between Hwy 609 and Hwy 15 near I-10 Jackson and Harrison Counties. Local funds of \$8,279,616 and federal earmark funds of \$654,289 **AMENDMENT**

July 2020 Changes

Increase Gulfport School Zone Safety by \$42,056 (20%) to \$252,333 **MODIFICATION**

September 2020 Changes **TIP UPDATE**

CTA 2023 - 2024 POP

JCCAC Bus rehab

Bay St Louis - Hwy 603 I-10 to US 90 \$180,000

Gulfport - US 49 Creosote Road to Turkey Creek \$2,162,720

D'Iberville - Brodie Road at Automall Parkway \$432,000

Long Beach - 28th Street at Klondyke Road \$800,000
Ocean Springs - Ocean Springs Road at Groveland \$1,132,430
D'Iberville - Suzanne Drive at Automall Parkway \$480,000
Pass Christian - Menge Avenue to Espy Avenue \$2,591,038
Bay St Louis - Old Spanish Trail Seube Street to Main Street \$600,000
Gautier - Martin Bluff Gautier-Vancleave Road to Martin Bluff Elementary \$720,000
Jackson County - Lemoyne Boulevard McCann Road to 3300 feet east \$262,151
Long Beach - Pineville Road Seal Avenue to Railroad Street \$600,000
Hancock County - Lakeshore Road Beach Road to Lower Bay Road \$480,000
Harrison County - Bethel Road & Success Road to Hwy 67 \$471,200
Port of Gulfport - US 49 signal timing plans \$200,000

October 2020 Changes MODIFICATION

GRPC/CTA TSP project - \$500,000 Move from 2020 to 2021
Ocean Springs - Steelman Road STUDY - Move from 2020 to 2021 \$48,000
Biloxi - Atkinson Road \$15,000 STUDY Move from 2020 to 2021
Gulfport - Pavement Management STUDY \$80,000 Move from 2020 to 2021
Bay St Louis - ADA Improvements STUDY Move from 2020 to 2021 \$28,000
Jackson County - Hwy 609 STUDY Move from 2020 to 2021 \$112,000
Long Beach - Beatline Road ENV STUDY Move from 2020 to 2021 \$150,000
Ocean Springs - Downtown parking STUDY Move from 2020 to 2021 \$40,000
Long Beach - 5 points intersection STUDY Move from 2020 to 2021 \$96,000
Biloxi - Point Cadet Improvements STUDY Move from 2020 to 2021 \$30,000
Ocean Springs - East Beach Pathway - Move from 2020 to 2021 \$384,000
Gautier - Martin Bluff Road Move from 2020 to 2021 Multiple funding sources Non-urb, TMA, HIP
Bay St Louis - Washington Street Sidewalks - Move from 2020 to 2021 \$120,000
Gulfport - Landon Road \$2,960,000 - Move from 2020 to 2021

October 2020 Changes AMENDMENTS

Waveland - St Joseph Street/Herlihy St and Old Spanish Trail - \$500,000 TAP
Diamondhead - East Aloha Drive PH 2/Veterans to Kalani Drive - \$489,866 TAP
Ocean Springs - Hanshaw Road/Ped Signal @ Cabildo Place - \$82,680
Bay St Louis - Ranch Street/Esplanade Street to Athletic Drive - \$120,000

Bay St Louis - Pine Street/Bay High School - \$140,000

Pascagoula - US 90 Lighting/Pascagoula Street to Industrial Road - \$1,021,913

December 2020 Changes

Jackson County - Highway 609 Gateway and Traffic Study add \$579 STBG to \$112,579 **MODIFICATION**

Gulfport - Landon Road TIP page changes - **MODIFICATION**

February 2021 Changes

Gautier - Combined the Martin Bluff Road Project with the Martin Bluff Road Pathway Project. Added \$720,000 to the original MB Rd project - **MOD**

April 2021 Changes

Ocean Springs - Government Street Improvements Hanley Road to Hanshaw Road breakout PHII \$230,000 - **Mod**

May 2021 Changes

Ocean Springs - Ocean Springs Road change termini from US 90 to Culeoka Dr to US 90 to Rod and Reel St - **Amend**

Gulfport - Interconnecting Gulfport BUILD project - add \$7,780,000 in local funds - **Amend**

Diamondhead - Add to Study Group - Wayfinding Study \$58,500 - **Mod**

June 2021 Changes

Biloxi - Woolmarket Road Sidewalks - Change terminus from Airport Road to Shriner's Blvd - **Amend**

July 2021 Changes

City of Moss Point - Add illustrative project - Interstate 10 Commercial Corridor Improvements - \$4,500,000 **Mod**

Harrison County - Add illustrative project - I-10 Menge Avenue interchange -\$10,000,000 **Mod**

City of Long Beach - Add illustrative funding to project - Beatline Road Corridor Improvements - \$150,000 **Mod**

City of Biloxi - Add illustrative funding to project - Popps Ferry Road Improvements - \$2,100,000 **Mod**