

MISSISSIPPI GULF COAST  
FY 2025-2028  
TRANSPORTATION  
IMPROVEMENT  
PROGRAM (TIP)

---



---

Projects and programs that contribute toward a safe, efficient, and resilient Gulf Coast transportation system

# Mississippi Gulf Coast Metropolitan Planning Organization Transportation Improvement Program

**FY 2025- 2028**

## **NON-DISCRIMINATION ASSURANCE**

As provided by Title VI of the Civil Rights Act of 1964 as amended, the Civil Rights Restoration Act of 1987 (P.L. 100.259) and related statutes, executive orders and regulations, the Gulf Regional Planning Commission (GRPC) assures that no person shall on the grounds of race, color, national origin, sex, sexual orientation, religion, age, or disability be excluded from participating in, be denied the benefits of, or otherwise subjected to discrimination under any program or activity from GRPC.

## **NOTATION OF FINANCIAL ASSISTANCE:**

The preparation of this document has been financed in part through grants from the United States Department of Transportation, Federal Highway Administration, the Federal Transit Administration, and the Mississippi Department of Transportation. It was prepared as tasked in the Mississippi Gulf Coast MPO's FY 23-24 Unified Planning Work Program Task A-2.

## **TRANSIT PROGRAM OF PROJECTS:**

Also listed in this document is Coast Transit Authority's Program of Projects that are funded by the Federal Transit Administration. The public meetings/comment period will satisfy the public participation requirements for the FTA Section 5307 and 5309 POP notice.

## THE GULF COAST MPO

The Metropolitan Planning Organization (MPO) is a federally mandated planning body responsible for coordinating transportation programs in US Census designated urbanized areas. The Gulf Regional Planning Commission (GRPC) serves as the MPO for the Mississippi Gulf Coast and is the lead agency responsible for developing and administering plans and activities required to maintain eligibility and receive federal funds for the transportation systems in Hancock, Harrison and Jackson counties. The primary mission of the MPO is to develop and maintain a transportation planning process that is compliant with federal and state requirements and supports the development and enhancement of sustainable multimodal facilities, programs and systems in the Mississippi Gulf Coast area. The Transportation Improvement Program (TIP) is one of the most important products of the MPO's planning process.

## THE TIP

The Transportation Improvement Program (TIP) is a financially constrained program developed through an on-going planning process for addressing short-term transportation priorities that are consistent with the MS Gulf Coast's Metropolitan Transportation Plan (MTP), the long-range transportation plan for our region. The TIP is developed and approved by the MPO and is included, without modification, in the Statewide Transportation Improvement Program (STIP) following approval by the Governor. The TIP can be amended by approval of the MPO policy committee. The Gulf Coast MPO allocates Surface Transportation Block Grant (STBG) and Transportation Alternative (TA) funds through TIP policies and processes described in the *MPO Handbook and Prospectus*.

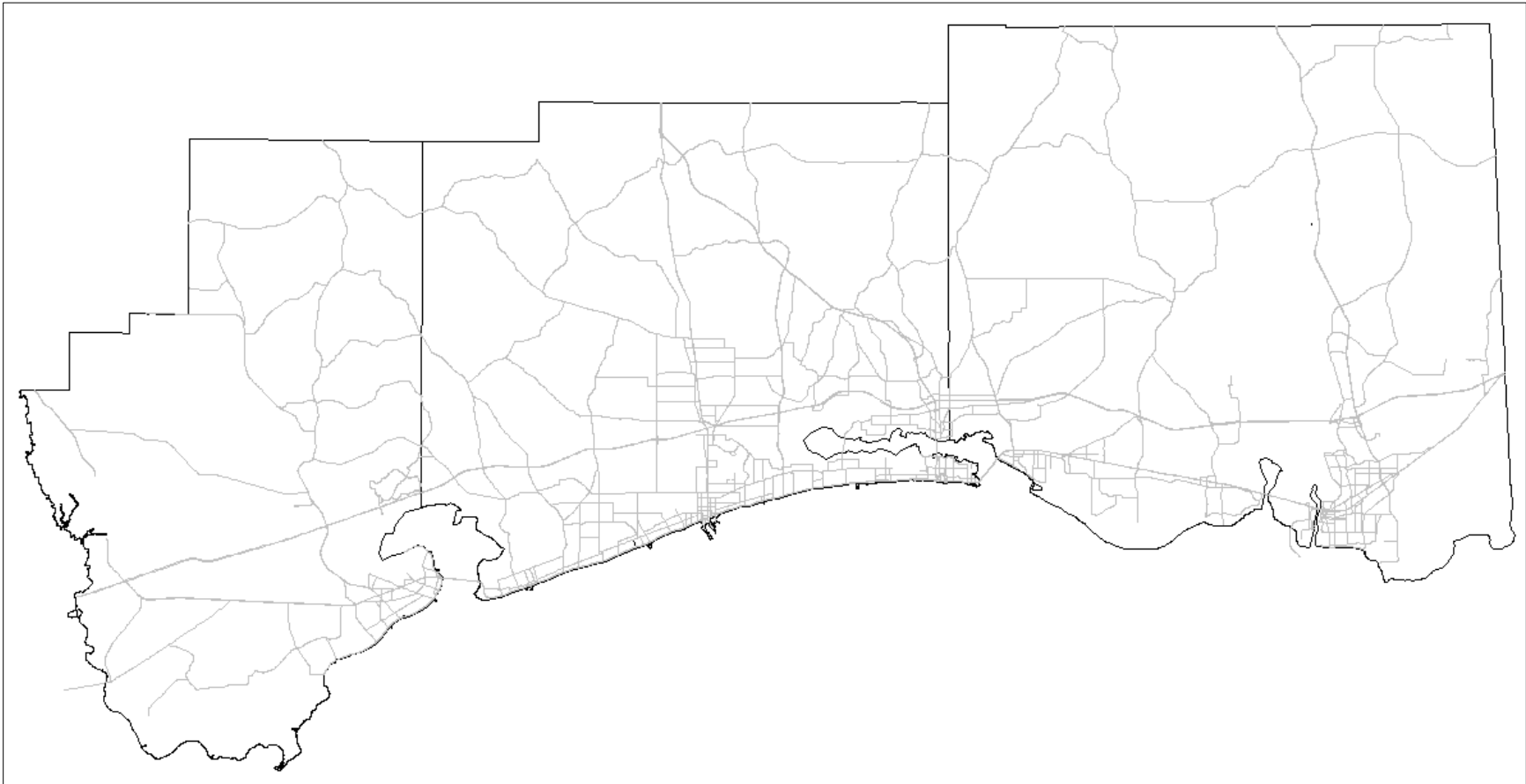
The Gulf Coast TIP identifies timing and funding of all federally funded transportation projects scheduled for implementation in the three coastal counties over a four-year period. The TIP identifies funding amounts, source of funds, project sponsor, type of project and year of funding for each project. All projects in the TIP must be consistent with goals and projects identified in the area's Metropolitan Transportation Plan. The TIP development process allows for public involvement at various points including public meetings where proposed projects are presented and discussed. Specific polices for public review are included in the MPO's *Public Participation Plan*.

The TIP development process occurs every two years, however the MPO provides opportunities to revise the projects in the TIP. Two types of changes include "amendment" and "administrative modification" depending on the level of change being made to the project. An amendment is a revision being made to the scope, termini, removal of a project or addition of a project. A modification is considered a minor revision to the TIP or STIP including the MS Gulf Coast MPO 20% maximum cost increase to a project. Specific polices for TIP changes are included in the *MPO Handbook and Prospectus*.

## GULF COAST PLANNING AREA

The Mississippi Gulf Coast Planning Area encompasses three counties in which are located 12 municipalities: Waveland, Bay St. Louis and Diamondhead in Hancock County; Pass Christian, Long Beach, Gulfport, Biloxi and D'Iberville in Harrison County; and Ocean Springs, Gautier, Pascagoula and Moss Point in Jackson County. There are two distinct urbanized areas within the planning area: the Gulfport Urbanized Area (UZA) which stretches from Bay Saint Louis to Ocean Springs and includes portions of all three coastal counties; and the Pascagoula UZA located in the eastern half of Jackson County.

Figure 1: MS Gulf Coast MPO Planning Area



## NATIONAL GOAL AND EMPHISIS AREAS

The TIP development process reflects the priorities and direction of the region guided by MPO Planning Factors. The MPO considers projects that will address the planning factors presented in Table 1 below.

**Table 1: Planning Factors**

- Economic Vitality - Support the economic vitality of the metropolitan area, especially by enabling global competitiveness, productivity, and efficiency
- Safety - Increase the safety of the transportation system for motorized and non-motorized users
- Security - Increase the security of the transportation system for motorized and non-motorized users
- Mobility & Accessibility - Increase the accessibility and mobility of people and for freight
- Environment - Protect and enhance the environment, promote energy conservation, improve the quality of life, and promote consistency between transportation improvements and State and local planned growth and economic development patterns
- Multimodal Connectivity - Enhance the integration and connectivity of the transportation system, across and between modes, for people and freight
- Operations - Promote efficient system management and operation
- Preservation - Emphasize the preservation of the existing transportation system
- Reliability & Resiliency - Improving transportation system resiliency and reliability
- Storm water - Reducing (or mitigating) the stormwater impacts of surface transportation
- Tourism - Enhancing travel and tourism

## TIP INVESTMENT STRATEGY

The Gulf Coast TIP process places emphasis on the development of specific project types through project categories referred to as “groups”. The TIP groups influence how federal transportation funds are spent through earmarking a portion of these funds to support specific areas. Funding groups encourage the use of STBG funds for investment in priority focus areas, control amount of funding in an area and expedite project delivery and being more responsive to needs by not requiring a TIP amendment for each project. The current project groups are “Intersection Projects”, Bicycle and Pedestrian Projects”, and “Multimodal Projects”.

## TIP PROJECT EVALUATION AND PRIORITIZATION

Given the fiscal realities of today and tomorrow with demands for budget reductions at all levels of national, state, and local government, decisions on where and how to spend the Mississippi Gulf Coast MPO’s allocation of STBG transportation funds should not be taken lightly. To ensure that the most beneficial projects are implemented, a project prioritization process is used. The criteria

used are based on federal goals, emphasis areas and performance measures for the MPO. Projects are evaluated by MPO staff and prioritized as needed to achieve performance targets and link investment decisions to goals.

## PERFORMANCE MANAGEMENT

In 2012, the transportation MAP-21 was developed with the intent of creating a streamlined, performance-based, multimodal program. MAP-21 increased the accountability and transparency of Federal highway programs by improving transportation investment decision-making through performance-based planning and programming. Performance measurement provides the MPO with a better ability to identify and mitigate issues with their respective transportation networks. The Infrastructure Investment and Jobs Act (IIJA) continues MAP-21's overall performance approach and ensures that State DOT's and MPO's invest in projects that collectively make progress toward the National Goals that were established by Congress.

**Table 2: Performance Goals**

- Safety - To achieve a significant reduction in traffic fatalities and serious injuries on all public roads
- Infrastructure condition - To maintain the highway infrastructure asset system in a state of good repair
- Congestion reduction - To achieve a significant reduction in congestion on the National Highway System
- System reliability - To improve the efficiency of the surface transportation system
- Freight movement and economic vitality - To improve the national freight network, strengthen the ability of rural communities to access national and international trade markets, and support regional economic development
- Environmental sustainability - To enhance the transportation system while protecting and enhancing the natural environment
- Reduced project delivery delays - To reduce project costs, promote jobs and the economy, and expedite the movement of people and goods by accelerating project completion through eliminating delays in the project development and delivery process, including reducing regulatory burdens and improving agencies' work practices

The MPO, MDOT and CTA cooperatively develop and sharing information related to transportation performance data, the selection of performance targets, the reporting of performance targets, the reporting of performance to be used in tracking progress toward attainment of critical outcomes for the region of the MPO. The MPO will support CTA's State of Good Repair targets by programming capital improvement transit projects in the MTP and TIP. The MPO collaborates with MDOT on Safety, pavement and bridge, system performance and freight performance by reviewing STIP and TIP project to assess their impacts and identifying projects from MPO planning to support the measures. This TIP was developed in consideration of the established performance measures and targets. As required under current the most recent transportation act, the Gulf Coast MPO will establish performance targets, and track progress towards target achievement, for the following performance measures except as noted:

**Table 3: Performance Measures**

Safety (PM1)

- Number of fatalities
- Rate of fatalities per 100 million Vehicle Miles Traveled (VMT)
- Number of serious injuries
- Rate of serious injuries per 100 million Vehicle Miles Traveled (VMT)
- Number of non-motorized fatalities and serious injuries

Pavement Condition (PM2)

- Percent of pavements on the Interstate System in Good condition.
- Percent of pavements on the Interstate System in Poor condition.
- Percent of the non-interstate National Highway System in Good condition.
- Percent of the non-interstate National Highway System in Poor condition.

Bridge Condition (PM2)

- Percent of National Highway System bridges in Good condition.
- Percent of National Highway System bridges in Poor condition.

System Performance (PM3)

- Percent of the Person-Miles Traveled on the Interstate that are reliable.
- Percent of the Person Miles Traveled on the Non-Interstate National Highway System that are reliable.
- Truck Travel Time Reliability (TTTR) index on the Interstate

Traffic Congestion

- Annual hours of peak hour excessive delay per capita. \*
- Percentage of Non-Single Occupancy Vehicle Travel. \*

Total Emissions Reduction

- Total emissions reductions by applicable pollutants under the CMAQ program. \*

Transit State of Good Repair

- Percentage of revenue vehicles exceeding their Useful Life Benchmark (ULB)
- Percentage of non-revenue service vehicles exceeding their ULB
- Percentage of facilities rated under 3.0 on the Transit Economic Requirements Model (TERM)
- Number of fatalities by mode
- Rate of fatalities per 100,000 total vehicle revenue miles by mode
- Number of injuries by mode
- Rate of injuries per 100,000 total vehicle revenue miles by mode
- Number of safety events by mode
- Rate of safety events per 100,000 total vehicle revenue miles by mode
- Mean distance between major mechanical failures by mode

*\*Not required for Gulf Coast MPO*

## FISCAL CONSTRAINT

Federal regulations require that financial constraint of the Transportation Improvement Program (TIP) be demonstrated and maintained by year and shall include sufficient financial information to determine which projects are to be implemented using current and/or reasonably available revenues. The MPO will use the figures below to develop their fiscal constraint for the STBG and TAP funds for the planning area.

Congress passes a new *Transportation Bill* approximately every four to six years, the latest of which is entitled the *Infrastructure Investment and Jobs Act (IIJA)*. The Transportation Bill authorizes to each state a certain amount for each funding category (STBG, TAP, etc.) for the federal fiscal years it covers. These authorizations are based on the funds expected to be available in the Highway Trust Fund. Congress then passes an *Appropriation Bill* near the beginning of each year that establishes the exact amounts that the states can actually spend in their highway program. The appropriation bill establishes a certain percentage of the total authorization for the states, which is referred to as an *Obligation Limitation*. MDOT suballocates STBG funds to its urbanized areas with over 200,000 in population (Gulfport, UZA) and must make obligation limitation available based on the criteria set forth in 23 U.S.C. 133(e). MDOT makes available 100% of the Gulfport UZA suballocation obligation limitation for each fiscal year to actually spend.

## TRANSIT PROGRAM OF PROJECTS

The Program of Projects (POP) reflects the Gulf Coast's federally supported transit projects over the next four fiscal years. The POP is consistent with the Metropolitan Transportation Plan (MTP) which implements regionally significant transit projects. The TIP lists each of FTA programs, the program funding sub-allocations, the government funding participation all which is identified by an ARC identification number. Notice for review of the POP is conducted by the MPO simultaneously with amendments and updates to the TIP. Public notice given is as follows: *"Also listed in this document is Coast Transit Authority's Program of Projects that are funded by the Federal Transit Administration. The public meetings/comment period will satisfy the public participation requirements for the FTA Section 5307 and 5309 POP notice. The proposed CTA Program of Projects will be final unless revised as a result of public comment."*

Satisfying the Requirement for Public Participation in Development of the POP using the Transportation Improvement Program Process. Federal transit law and joint FHWA/FTA planning regulations governing the metropolitan planning process require a locality to include the public and solicit comment when the locality develops its metropolitan long[1]range (twenty-year) transportation plan and its (four-year) metropolitan TIP. Accordingly, FTA has determined that when a recipient follows the procedures of the public involvement process outlined in the FHWA/FTA planning regulations, the recipient satisfies the public participation requirements associated with development of the POP that recipients of Section 5307 funds must meet. See 23 CFR part 450 and 49 CFR part 613 (specifically Subpart B, "Statewide Transportation Planning," and Subpart C, "Metropolitan Transportation Planning and Programming").



A recipient that chooses to integrate the two should coordinate with the MPO and make sure the public knows that the recipient is using the public participation process associated with TIP development to satisfy the public hearing requirements of Section 5307(b). The recipient must ensure the TIP document explicitly states that public notice of public involvement activities and time established for public review and comment on the TIP will satisfy the POP requirements of the Section 5307 Program. Furthermore, if recipients intend to follow such an ongoing practice, FTA encourages them to include such a reference in the metropolitan planning agreement required between public transportation operators, MPOs, and states, as called for in 23 CFR 450.314. Regulations at 23 CFR 450.316 provide a detailed description of the public participation plan.

**PROJECT COST INCREASES**

The Mississippi Gulf Coast MPO receives an annual distribution of STBG to be used by 15 or more Local Public Agencies. On March 1, 2018, the MPO voted to control project cost increases by allowing a maximum of 20% increase. If an LPA needs more funding for a project, MPO staff can approve additional funds up to 20% of the original project funding allocation. If more than 20% is needed for the project, the sponsoring local public agency (LPA) will have to cover the increased cost. An exception can be made for projects that were listed on the TIP prior to the update made in September 2018.

**TIP MODIFICATIONS AND AMENDMENTS**

<b>Total Project Cost of all phases shown within the approved TIP</b>	<b><i>If the proposed change is greater than or equal to the thresholds below process as an Amendment</i></b>	<b><i>If the proposed change is less than the thresholds below process as an Administration Modification</i></b>
<b>Up to \$2 Million</b>	<b>&gt;/= 75%</b>	<b>&lt; 75%</b>
<b>\$2 Million to \$15 Million</b>	<b>&gt;/= 50%</b>	<b>&lt; 50%</b>
<b>\$15 Million to \$75 Million</b>	<b>&gt; / = 40%</b>	<b>&lt; 40%</b>
<b>\$75 Million or above</b>	<b>&gt;/= 30%</b>	<b>&lt; 30%</b>

Note: Thresholds do not apply to grouped projects. All changes to grouped projects are processed as an Administration Modification.

### **SPECIAL MATCH CREDIT**

The Gulf Coast MPO provides the opportunity for the use of Special Match Credit (SMC) Program. SMC is available for LPA projects and is to be requested only by those LPA's who advance fund those projects at their own cost. If requested in the project initiation process, the LPA may qualify to use actual incurred costs for Preliminary Engineering (PE), Right-of-Way (ROW), and other eligible costs as part, or all, of the required share for the construction project by obtaining Special Match Credit.

### **PUBLIC REVIEW**

COMING SOON

## Mississippi Gulf Coast TIP: Estimated Funding for FY2025-2028

FY2025 Estimate	Funding Source	Carryover	Federal	Local	Total
	TMA		\$6,412,774	\$1,603,194	\$8,015,968
	Non Urban		\$965,333	\$241,333	\$1,206,666
	Transportation Alternatives		\$829,805	\$207,451	\$1,037,256
	Safety Group		\$500,000	\$125,000	\$625,000
	Studies/Projects Group		\$250,000	\$62,500	\$312,500
	Carbon Reduction Program - TMA		\$859,945	\$214,986	\$1,074,931
	Carbon Reduction Program - Non Urban		\$187,217	\$46,804	\$234,021
FY2026 Estimate	Funding Source	Carryover	Federal	Local	Total
	TMA		\$6,556,029	\$1,639,007	\$8,195,036
	Non Urban		\$965,333	\$241,333	\$1,206,666
	Transportation Alternatives		\$846,401	\$211,600	\$1,058,001
	Safety Group		\$500,000	\$125,000	\$625,000
	Studies/Projects Group		\$250,000	\$62,500	\$312,500
	Carbon Reduction Program - TMA		\$877,144	\$219,286	\$1,096,430
	Carbon Reduction Program - Non Urban		\$190,961	\$47,740	\$238,701
FY2027 Estimate	Funding Source	Carryover			
	TMA		\$6,702,150	\$1,675,538	\$8,377,688
	Non Urban		\$965,333	\$241,333	\$1,206,666
	Transportation Alternatives		\$863,329	\$215,832	\$1,079,161
	Safety Group		\$500,000	\$125,000	\$625,000
	Studies/Projects Group		\$250,000	\$62,500	\$312,500
	Carbon Reduction Program - TMA		\$894,686	\$223,672	\$1,118,358
	Carbon Reduction Program - Non Urban		\$194,780	\$48,695	\$243,475
FY2028 Estimate	Funding Source	Carryover			
	TMA		\$6,851,193	\$1,712,798	\$8,563,991
	Non Urban		\$965,333	\$241,333	\$1,206,666
	Transportation Alternatives		\$880,595	\$220,149	\$1,100,744
	Safety Group		\$500,000	\$125,000	\$625,000
	Studies/Projects Group		\$250,000	\$62,500	\$312,500
	Carbon Reduction Program - TMA		\$912,580	\$228,145	\$1,140,725
	Carbon Reduction Program - Non Urban		\$198,676	\$49,669	\$248,345

NOTE: Funding estimates are based on the reasonable expectation of continued funding for all federally supported programs.

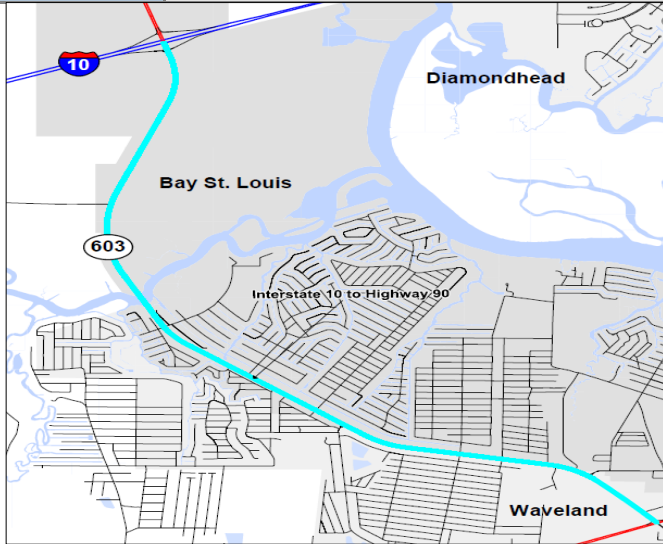
# **Hancock County**

# Mississippi Gulf Coast Metropolitan Planning Organization

## FY2025-2028 Transportation Improvement Program (TIP)



<b>County</b>	Hancock	<b>Agency</b>	Bay St Louis
<b>Improvement Type</b>	Multimodal	<b>Route</b>	Highway 603
<b>Project Termini</b>	Interstate 10 to United States 90		
<b>Project Number</b>			
<b>Project Description</b>	Project will extend the length of turning lanes, improving roadway safety and traffic flow.		



FY	Source	Phase	Federal	Local/Match	Total
		PE	\$0	\$68,750	\$68,750
2025	TMA	CON	\$550,000	\$137,500	\$687,500
<b>Total Project Cost</b>			<b>\$550,000</b>	<b>\$206,250</b>	<b>\$756,250</b>

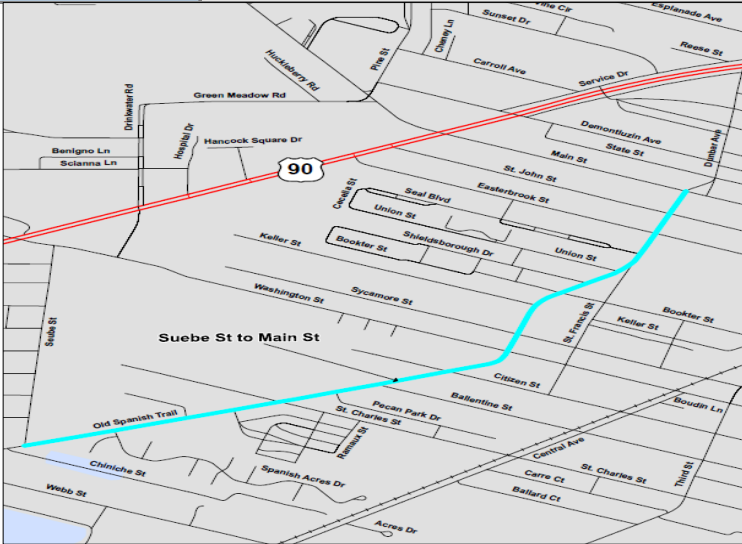
Project Notes					
Action	Add to TIP	Date	8/1/2020	Type	Amend
Remarks	\$180,000				
Action	Cost increase	Date	8/4/2022	Type	Amend
Remarks	Add \$220K to project from 2022 call for projects				
Action	Add funding	Date	9/6/2023	Type	Amend
Remarks	Add \$150,000 STBG. \$400,000 to \$550,000 STBG				
Action		Date		Type	
Remarks					
Action		Date		Type	
Remarks					
Action		Date		Type	
Remarks					
Action		Date		Type	
Remarks					
*These projects are eligible for Special Match Credit if the LPA chooses to utilize					

# Mississippi Gulf Coast Metropolitan Planning Organization

## FY2025-2028 Transportation Improvement Program (TIP)



<b>County</b>	Hancock	<b>Agency</b>	Bay St Louis
<b>Improvement Type</b>	Multimodal	<b>Route</b>	Old Spanish Trail
<b>Project Termini</b>	Seube Street to Main Street		
<b>Project Number</b>			
<b>Project Description</b>	This project is to increase vehicular and pedestrian safety by lighting an existing sidewalk on a major transportation connection in Bay Saint Louis.		



FY	Source	Phase	Federal	Local/Match	Total
		PE	\$0	\$72,094	\$72,094
2028	TMA-STBG	CON	\$483,760	\$120,940	\$604,700
	N/A	CON	\$0	\$116,240	\$116,240
<b>Total Project Cost</b>			<b>\$483,760</b>	<b>\$309,274</b>	<b>\$793,034</b>

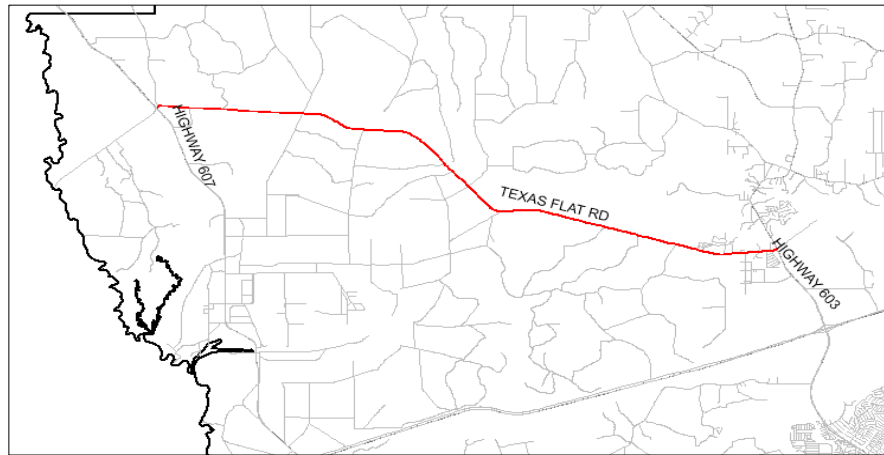
Project Notes					
Action	Add to TIP	Date	8/1/2020	Type	Amend
Remarks	\$600,000				
Action	Reduce funding	Date	4/19/2024	Type	Amend
Remarks	Reduce funding by \$116,240 and adding to Beyer project				
Action		Date		Type	
Remarks					
Action		Date		Type	
Remarks					
Action		Date		Type	
Remarks					
Action		Date		Type	
Remarks					
Action		Date		Type	
Remarks					
*These projects are eligible for Special Match Credit if the LPA chooses to utilize					

# Mississippi Gulf Coast Metropolitan Planning Organization

## FY2025-2028 Transportation Improvement Program (TIP)



<b>County</b>	Hancock County	<b>Agency</b>	Hancock County
<b>Improvement Type</b>	Multimodal	<b>Route</b>	Texas Flat Road
<b>Project Termini</b>	MS 603 to MS 607		
<b>Project Number</b>			
<b>Project Description</b>	Repair and level shoulders, installation of micro surface treatment.		



FY	Source	Phase	Federal	Local/Match	Total
		PE	\$0	\$90,271	\$90,271
2026	TMA-STBG	CON	\$1,840,567	\$369,870	\$2,300,708
<b>Total Project Cost</b>			<b>\$1,840,567</b>	<b>\$460,141</b>	<b>\$2,390,979</b>

### Project Notes

<b>Action</b>	Add to TIP	<b>Date</b>	8/4/2022	<b>Type</b>	Amend
<b>Remarks</b>	\$1,840,567				
<b>Action</b>	Add PE Phase	<b>Date</b>	8/11/2023	<b>Type</b>	Mod
<b>Remarks</b>	Add PE phase and adjust local match for CON				
<b>Action</b>		<b>Date</b>		<b>Type</b>	
<b>Remarks</b>					
<b>Action</b>		<b>Date</b>		<b>Type</b>	
<b>Remarks</b>					
<b>Action</b>		<b>Date</b>		<b>Type</b>	
<b>Remarks</b>					
<b>Action</b>		<b>Date</b>		<b>Type</b>	
<b>Remarks</b>					

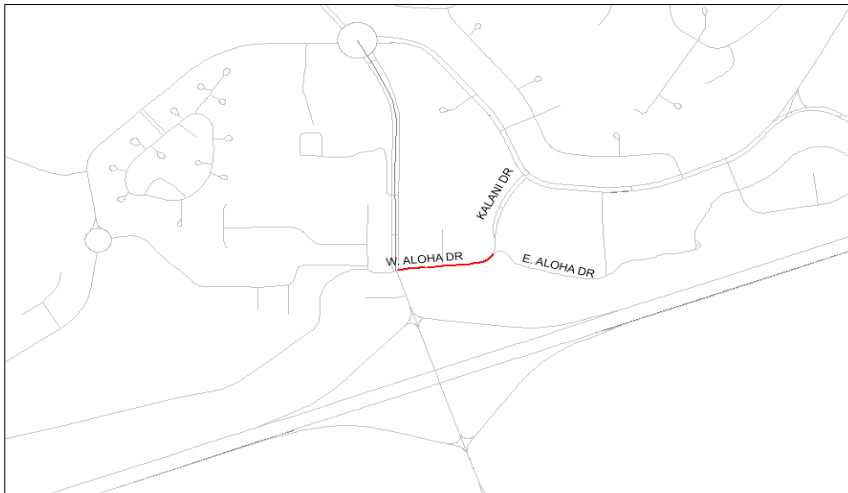
\*These projects are eligible for Special Match Credit if the LPA chooses to utilize

# Mississippi Gulf Coast Metropolitan Planning Organization

## FY2025-2028 Transportation Improvement Program (TIP)



<b>County</b>	Hancock County	<b>Agency</b>	Diamondhead
<b>Improvement Type</b>	Multimodal	<b>Route</b>	West Aloha Drive
<b>Project Termini</b>	Gex Drive to Kalani Drive		
<b>Project Number</b>			
<b>Project Description</b>	Medians, curbing, pavement, sidewalks, pathways.		



FY	Source	Phase	Federal	Local/Match	Total
		PE	\$0	\$100,000	\$100,000
2026	TMA-STBG	CON	\$800,000	\$200,000	\$1,000,000
<b>Total Project Cost</b>			<b>\$800,000</b>	<b>\$300,000</b>	<b>\$1,100,000</b>

### Project Notes

<b>Action</b>	Add to TIP	<b>Date</b>	8/4/2022	<b>Type</b>	Amend
<b>Remarks</b>	\$800,000				
<b>Action</b>		<b>Date</b>		<b>Type</b>	
<b>Remarks</b>					
<b>Action</b>		<b>Date</b>		<b>Type</b>	
<b>Remarks</b>					
<b>Action</b>		<b>Date</b>		<b>Type</b>	
<b>Remarks</b>					
<b>Action</b>		<b>Date</b>		<b>Type</b>	
<b>Remarks</b>					
<b>Action</b>		<b>Date</b>		<b>Type</b>	
<b>Remarks</b>					

\*These projects are eligible for Special Match Credit if the LPA chooses to utilize



# Mississippi Gulf Coast Metropolitan Planning Organization

## FY2025-2028 Transportation Improvement Program (TIP)



<b>County</b>	Hancock County	<b>Agency</b>	Hancock County
<b>Improvement Type</b>	Multimodal	<b>Route</b>	Kiln-Delisle Road
<b>Project Termini</b>	Hancock County Arena		
<b>Project Number</b>			
<b>Project Description</b>	Construct new turn lanes for both eastbound and westbound traffic to provide safer access into the Hancock County Arena. Also, construct a right turn lane into East Hancock Elementary School. This project will also include drainage improvements to accommodate the new roadway width.		



Project Notes					
Action	Add to TIP	Date	8/8/2024	Type	Amend
Remarks	\$1,160,000				
Action		Date		Type	
Remarks					
Action		Date		Type	
Remarks					
Action		Date		Type	
Remarks					
Action		Date		Type	
Remarks					
Action		Date		Type	
Remarks					
Action		Date		Type	
Remarks					
*These projects are eligible for Special Match Credit if the LPA chooses to utilize					

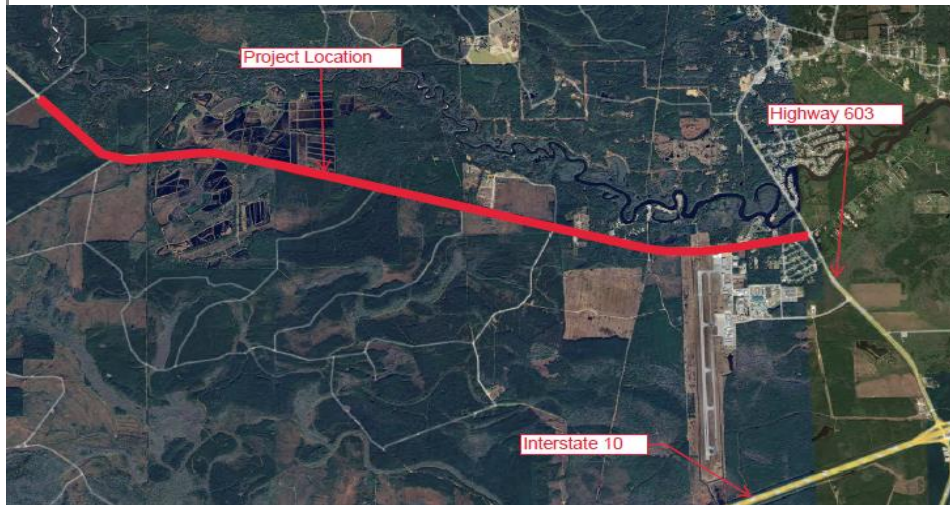
FY	Source	Phase	Federal	Local/Match	Total
		PE	\$0	\$145,000	\$145,000
		ROW	\$0	\$100,000	\$100,000
2028	TMA-STBG	CON	\$1,160,000	\$290,000	\$1,450,000
<b>Total Project Cost</b>			<b>\$1,160,000</b>	<b>\$535,000</b>	<b>\$1,695,000</b>

# Mississippi Gulf Coast Metropolitan Planning Organization

## FY2025-2028 Transportation Improvement Program (TIP)



<b>County</b>	Hancock County	<b>Agency</b>	Hancock County
<b>Improvement Type</b>	Multimodal	<b>Route</b>	Texas Flat Road PH2
<b>Project Termini</b>	MS 603 to MS 607		
<b>Project Number</b>			
<b>Project Description</b>	Install rumble strips and a 2' safety shoulder in each direction to increase travel safety along this route. Provide shoulder stabilization to reduce the amount of embankment erosion. Increase the PASER rating by completing base repairs. Striping of roadway to increase lane delineation.		



FY	Source	Phase	Federal	Local/Match	Total
		PE	\$0	\$187,800	\$187,800
2028	TMA-STBG	CON	\$1,502,400	\$375,600	\$1,878,000
<b>Total Project Cost</b>			<b>\$1,502,400</b>	<b>\$563,400</b>	<b>\$2,065,800</b>

Project Notes					
Action	Add to TIP	Date	8/8/2024	Type	Amend
Remarks	\$1,502,400				
Action		Date		Type	
Remarks					
Action		Date		Type	
Remarks					
Action		Date		Type	
Remarks					
Action		Date		Type	
Remarks					
Action		Date		Type	
Remarks					
Action		Date		Type	
Remarks					
*These projects are eligible for Special Match Credit if the LPA chooses to utilize					

# Mississippi Gulf Coast Metropolitan Planning Organization

## FY2025-2028 Transportation Improvement Program (TIP)



<b>County</b>	Hancock County	<b>Agency</b>	Hancock County
<b>Improvement Type</b>	Multimodal	<b>Route</b>	Lakeshore Road PH 2
<b>Project Termini</b>	CSX railroad to South Beach Boulevard		
<b>Project Number</b>			
<b>Project Description</b>	PH2 Reconstruction		



FY	Source	Phase	Federal	Local/Match	Total
		PE	\$0	\$50,000	\$50,000
2028	TMA-STBG	CON	\$715,200	\$178,800	\$894,000
<b>Total Project Cost</b>			<b>\$715,200</b>	<b>\$228,800</b>	<b>\$944,000</b>

### Project Notes

Action	Add to TIP	Date	8/8/2024	Type	Amend
Remarks	\$715,200				
Action		Date		Type	
Remarks					
Action		Date		Type	
Remarks					
Action		Date		Type	
Remarks					
Action		Date		Type	
Remarks					
Action		Date		Type	
Remarks					
Action		Date		Type	
Remarks					

Special Match Credit ?

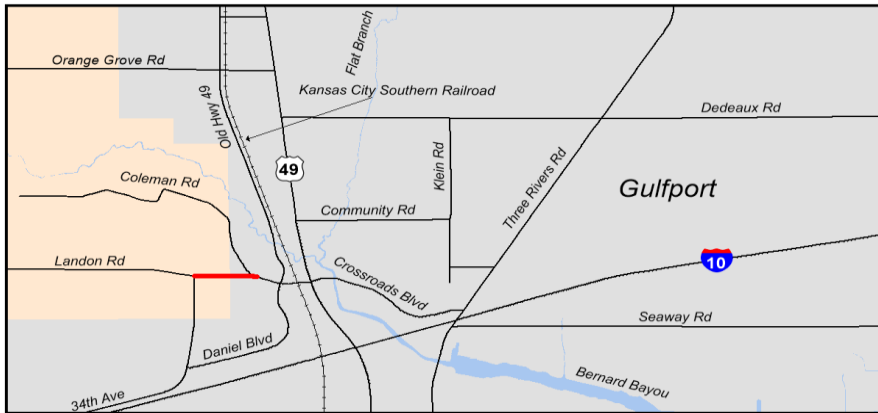
# **Harrison County**

# Mississippi Gulf Coast Metropolitan Planning Organization

## FY2025-2028 Transportation Improvement Program (TIP)



<b>County</b>	Harrison	<b>Agency</b>	Harrison County
<b>Improvement Type</b>	Multimodal	<b>Route</b>	Landon Road
<b>Project Termini</b>	Coleman Road to 34th Avenue (.25 mile)		
<b>Project Number</b>			
<b>Project Description</b>	Connect with Gulfport project to widen and add bike/ped facilities		



Project Notes					
Action	Add to TIP	Date	8/23/2018	Type	Amend
Remarks	\$1,360,000 STBG				
Action		Date		Type	
Remarks					
Action		Date		Type	
Remarks					
Action		Date		Type	
Remarks					
Action		Date		Type	
Remarks					
Action		Date		Type	
Remarks					
*These projects are eligible for Special Match Credit if the LPA chooses to utilize					

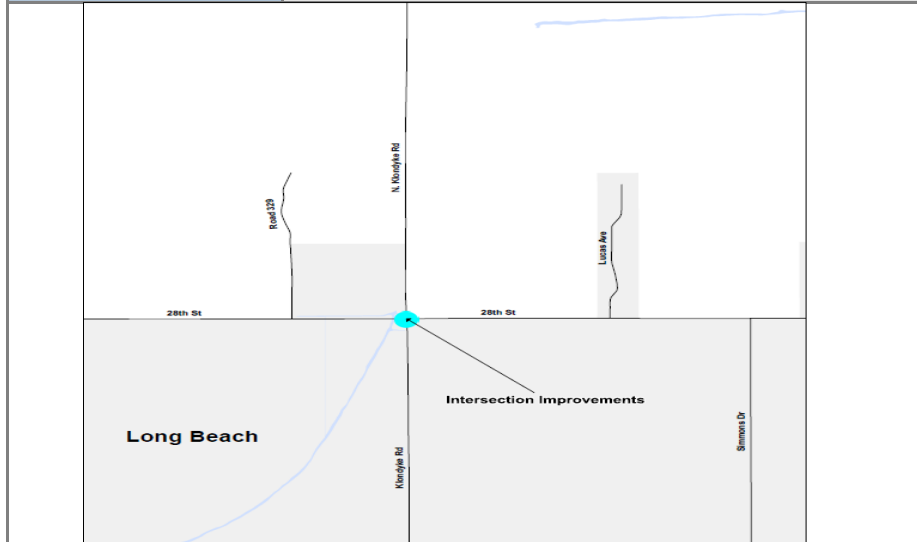
FY	Source	Phase	Federal	Local/Match	Total
		PE	\$0	\$170,000	\$170,000
		ROW	\$0	\$100,000	\$100,000
2026	TMA-STBG	CON	\$1,360,000	\$340,000	\$1,700,000
<b>Total Project Cost</b>			<b>\$1,360,000</b>	<b>\$610,000</b>	<b>\$1,970,000</b>

# Mississippi Gulf Coast Metropolitan Planning Organization

## FY2025-2028 Transportation Improvement Program (TIP)



<b>County</b>	Harrison	<b>Agency</b>	Long Beach
<b>Improvement Type</b>	Intersection	<b>Route</b>	28th Street
<b>Project Termini</b>	28th Street - at Klondyke Road		
<b>Project Number</b>			
<b>Project Description</b>	Project is to improve the intersection of 28th Street and Klondyke Road. A determination of improvements to signalization, additional turn lanes and the consideration of a roundabout.		



FY	Source	Phase	Federal	Local/Match	Total
2025		PE	\$0	\$100,000	\$100,000
2025		ROW	\$0	\$100,000	\$100,000
2025	TMA-STBG	CON	\$800,000	\$200,000	\$1,000,000
<b>Total Project Cost</b>			<b>\$800,000</b>	<b>\$400,000</b>	<b>\$1,200,000</b>

### Project Notes

<b>Action</b>	Add to TIP	<b>Date</b>	8/1/2020	<b>Type</b>	Amend
<b>Remarks</b>	\$800,000				
<b>Action</b>		<b>Date</b>		<b>Type</b>	
<b>Remarks</b>					
<b>Action</b>		<b>Date</b>		<b>Type</b>	
<b>Remarks</b>					
<b>Action</b>		<b>Date</b>		<b>Type</b>	
<b>Remarks</b>					
<b>Action</b>		<b>Date</b>		<b>Type</b>	
<b>Remarks</b>					
<b>Action</b>		<b>Date</b>		<b>Type</b>	
<b>Remarks</b>					

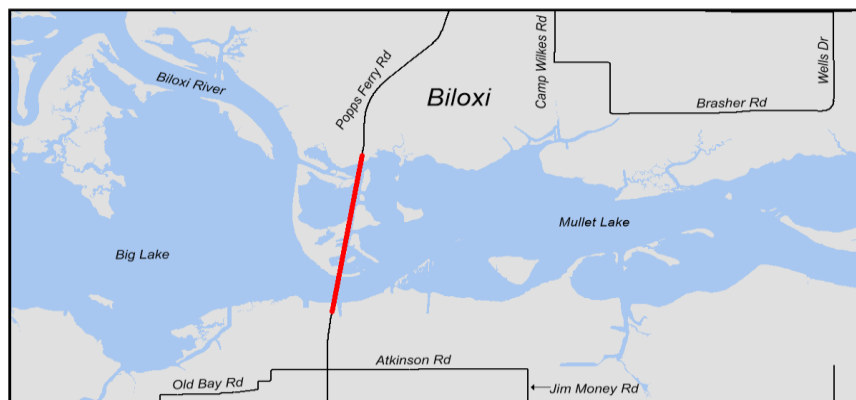
\*These projects are eligible for Special Match Credit if the LPA chooses to utilize

# Mississippi Gulf Coast Metropolitan Planning Organization

## FY2025-2028 Transportation Improvement Program (TIP)



<b>County</b>	Harrison	<b>Agency</b>	Biloxi	
<b>Improvement Type</b>	Multimodal	<b>Route</b>	Poppa Ferry Road	
<b>Project Termini</b>	.3 miles of bridge			
<b>Project Number</b>				
<b>Project Description</b>	Replace the existing Poppa Ferry bridge			



FY	Source	Phase	Federal	Local/Match	Total
Illustrative	Earmark	PE	\$0	\$100,000	\$100,000
Illustrative	Earmark	ENV	\$4,000,000	\$1,000,000	\$5,000,000
Illustrative	Earmark	CON	\$8,000,000	\$2,000,000	\$10,000,000
<b>Total Project Cost</b>			<b>\$12,000,000</b>	<b>\$3,100,000</b>	<b>\$15,100,000</b>

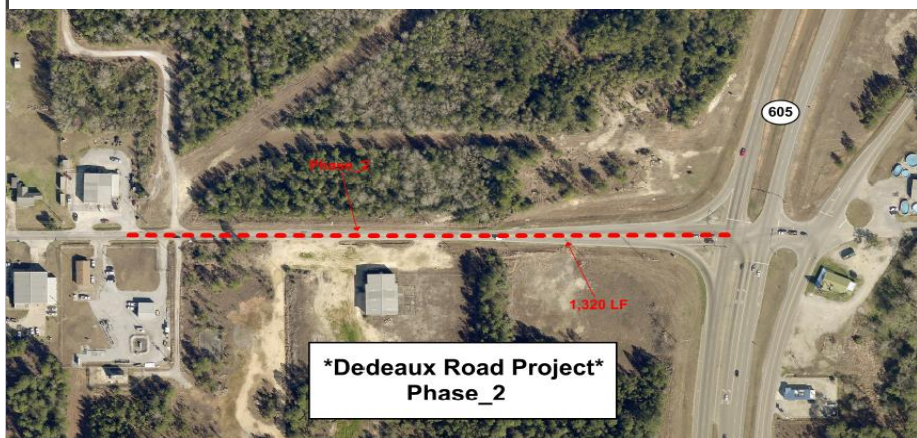
Project Notes					
Action	Add to TIP	Date	5/21/2009	Type	Amend
Remarks	\$4,000,000 Earmark Funds (Environmental Phase)				
Action	Change year	Date	10/1/2012	Type	Mod
Remarks	Move ENV from FY12 to FY13				
Action	Add Funds	Date	9/13/2013	Type	Amend
Remarks	Add \$8,000,000 Earmark Funds (Construction Phase)				
Action	Review	Date	8/31/2017	Type	N/A
Remarks	No CON yr assigned - MPO illustrative List				
Action		Date		Type	
Remarks					
Action		Date		Type	
Remarks					
Action		Date		Type	
Remarks					
Action		Date		Type	
Remarks					

# Mississippi Gulf Coast Metropolitan Planning Organization

## FY2025-2028 Transportation Improvement Program (TIP)



<b>County</b>	Harrison	<b>Agency</b>	Gulfport
<b>Improvement Type</b>	Multimodal	<b>Route</b>	Dedeaux Road Phase 2
<b>Project Termini</b>	Hwy 605 to 1/4 mile West of Hwy 605		
<b>Project Number</b>			
<b>Project Description</b>	Widening and adding bike/ped facilities		



FY	Source	Phase	Federal	Local/Match	Total
		PE	\$0	\$100,000	\$100,000
		ENV	\$0	\$15,000	\$15,000
		ROW	\$0	\$50,000	\$50,000
2025	TMA - STBG	CON	\$3,760,000	\$775,000	\$4,535,000
<b>Total Project Cost</b>			<b>\$3,760,000</b>	<b>\$940,000</b>	<b>\$4,700,000</b>

Project Notes					
Action	Add to TIP	Date	8/23/2018	Type	Amend
Remarks	\$3,760,000 added to Illustrative List				
Action	Split project	Date	12/8/2022	Type	Amend
Remarks	Phase 2 and Phase 2a split at 1/4 mile east of Hwy 605				
Action		Date		Type	
Remarks					
Action		Date		Type	
Remarks					
Action		Date		Type	
Remarks					
Action		Date		Type	
Remarks					
Action		Date		Type	
Remarks					
Action		Date		Type	
Remarks					

\*These projects are eligible for Special Match Credit if the LPA chooses to utilize

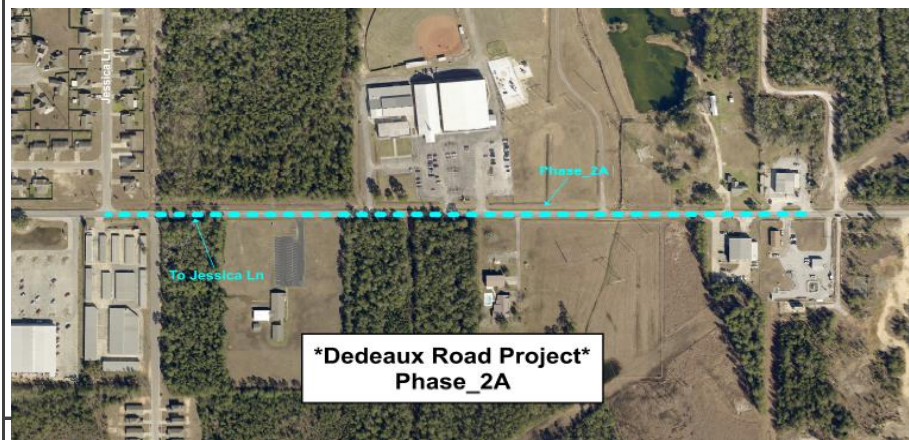


# Mississippi Gulf Coast Metropolitan Planning Organization

## FY2025-2028 Transportation Improvement Program (TIP)



<b>County</b>	Harrison	<b>Agency</b>	Gulfport
<b>Improvement Type</b>	Multimodal	<b>Route</b>	Dedeaux Road Phase 2a
<b>Project Termini</b>	Jessica Drive to 1/4 mile West of Hwy 605		
<b>Project Number</b>			
<b>Project Description</b>	Widening and adding bike/ped facilities		



FY	Source	Phase	Federal	Local/Match	Total
Illustrative		PE	\$0	\$800,000	\$800,000
Illustrative		ENV	\$0	\$15,000	\$15,000
Illustrative		ROW	\$0	\$750,000	\$750,000
Illustrative		CON	\$0	\$800,000	\$8,000,000
<b>Total Project Cost</b>			<b>\$0</b>	<b>\$2,365,000</b>	<b>\$9,565,000</b>

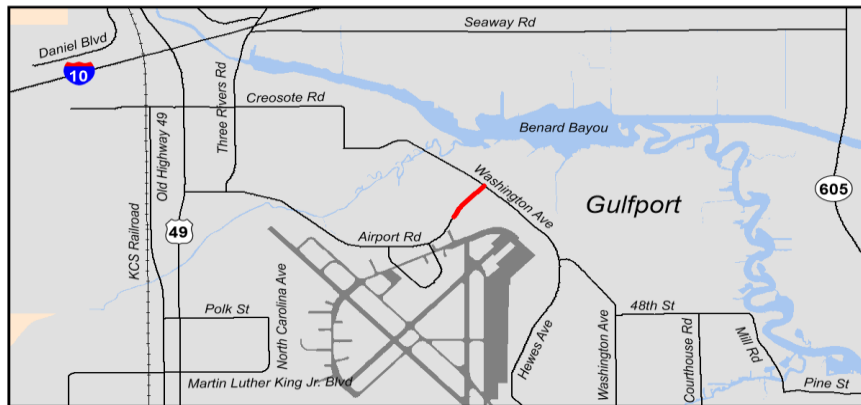
Project Notes					
Action	Add to TIP	Date	8/23/2018	Type	Amend
Remarks	\$3,760,000 added to Illustrative List				
Action	Split project	Date	12/8/2022	Type	Amend
Remarks	Phase 2 and Phase 2a split at 1/4 mile east of Hwy 605				
Action		Date		Type	
Remarks					
Action		Date		Type	
Remarks					
Action		Date		Type	
Remarks					
Action		Date		Type	
Remarks					
Action		Date		Type	
Remarks					
*These projects are eligible for Special Match Credit if the LPA chooses to utilize					

# Mississippi Gulf Coast Metropolitan Planning Organization

## FY2025-2028 Transportation Improvement Program (TIP)



<b>County</b>	Harrison	<b>Agency</b>	Gulfport
<b>Improvement Type</b>	Intersection	<b>Route</b>	Airport Road
<b>Project Termini</b>	Washington Ave to the existing 4 lane segment (.25 mile)		
<b>Project Number</b>			
<b>Project Description</b>	Widen Airport Road and build roundabout at Washington Avenue		



Project Notes					
Action	Add to TIP	Date	6/25/2015	Type	Amend
Remarks	\$550,000 STP				
Action	Change Year	Date	2/23/2017	Type	Mod
Remarks	Move CON year from FY17 & FY19				
Action	Change Year	Date	8/23/2018	Type	Mod
Remarks	Move project to the Illustrative List				
Action	Reduce funding to \$147,085	Date	12/16/2019	Type	Mod
Remarks	Reduced to add to Courthouse Road				
Action	Add funding	Date	8/4/2022	Type	Amend
Remarks	\$3,852,915 added to project				
Action		Date		Type	
Remarks					
Action		Date		Type	
Remarks					
Action		Date		Type	
Remarks					

FY	Source	Phase	Federal	Local/Match	Total
		PE	\$0	\$500,000	\$500,000
2027	TMA-STBG	CON	\$4,000,000	\$1,000,000	\$5,000,000
<b>Total Project Cost</b>			<b>\$4,000,000</b>	<b>\$1,500,000</b>	<b>\$5,500,000</b>

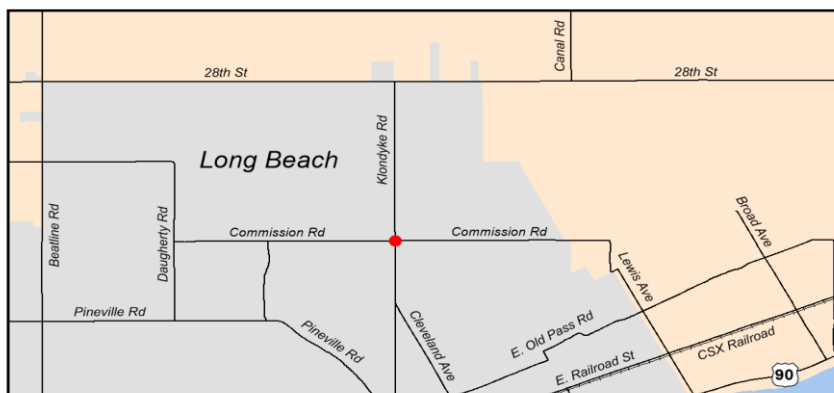
\*These projects are eligible for Special Match Credit if the LPA chooses to utilize

# Mississippi Gulf Coast Metropolitan Planning Organization

## FY2025-2028 Transportation Improvement Program (TIP)



<b>County</b>	Harrison	<b>Agency</b>	Long Beach
<b>Improvement Type</b>	Intersection	<b>Route</b>	Klondyke Road
<b>Project Termini</b>	Commission Road		
<b>Project Number</b>			
<b>Project Description</b>	Intersection improvements including sidewalk connectivity and crosswalks		



Project Notes					
Action	Add to TIP	Date	8/23/2018	Type	Amend
Remarks	\$760,000 STBG				
Action		Date	2/1/2022	Type	MOD
Remarks	Modification for PE and ROW for special match credit				
Action	Change FY	Date	11/14/2022	Type	MOD
Remarks	Move from FY 2022 to 2023				
Action	Increase funding	Date	3/27/2024	Type	Amend
Remarks	Add \$325,000 STBG. \$760,000 to \$1,085,000				
Action	Move FY	Date	3/27/2024	Type	Mod
Remarks	Move from FY 23 to FY 25				
Action		Date		Type	
Remarks					
Action		Date		Type	
Remarks					
Action		Date		Type	
Remarks					
*These projects are eligible for Special Match Credit if the LPA chooses to utilize					

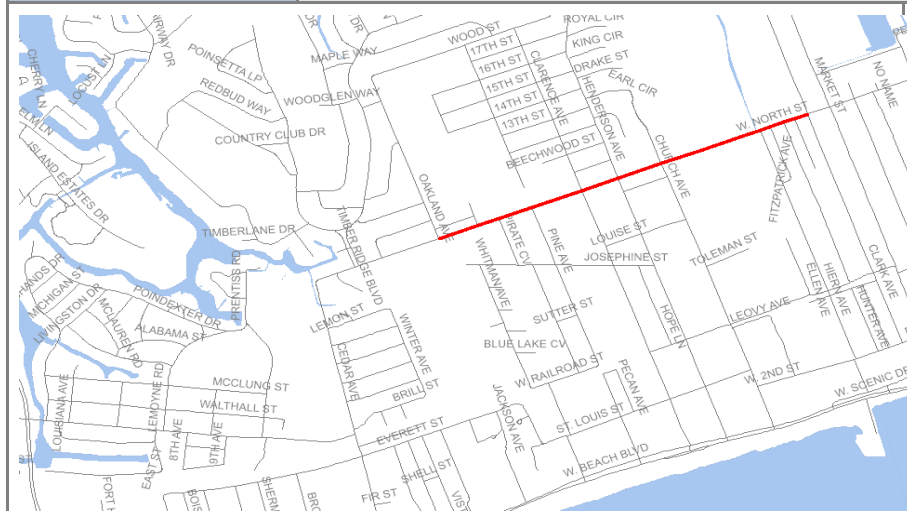
FY	Source	Phase	Federal	Local/Match	Total
		PE	\$0	\$166,621	\$166,621
2025	TMA-STBG	CON	\$1,085,000	\$271,250	\$1,356,250
2025		ROW	\$0	\$75,000	\$75,000
2025		Other	\$0	\$25,000	\$25,000
<b>Total Project Cost</b>			<b>\$1,085,000</b>	<b>\$537,871</b>	<b>\$1,622,871</b>

# Mississippi Gulf Coast Metropolitan Planning Organization

## FY2025-2028 Transportation Improvement Program (TIP)



<b>County</b>	Harrison	<b>Agency</b>	Pass Christian
<b>Improvement Type</b>	Bike/Ped	<b>Route</b>	North Street
<b>Project Termini</b>	High School to Pass Estates		
<b>Project Number</b>			
<b>Project Description</b>	Sidewalks providing safe access for students to school		



### Project Notes

<b>Action</b>	Add to TIP	<b>Date</b>	6/25/2015	<b>Type</b>	Amend
<b>Remarks</b>					
<b>Action</b>	Move FY	<b>Date</b>	3/30/2022	<b>Type</b>	Mod
<b>Remarks</b>	Move from 2021 to 2022				
<b>Action</b>	Change FY	<b>Date</b>	11/10/2022	<b>Type</b>	Mod
<b>Remarks</b>	Move from FY 2022 to FY 2023				
<b>Action</b>	20 % cost increase	<b>Date</b>	11/20/2023	<b>Type</b>	Mod
<b>Remarks</b>	Cost increase: Add \$90,560 from \$452,800 to \$543,360				
<b>Action</b>	Change FY	<b>Date</b>	11/20/2023	<b>Type</b>	Mod
<b>Remarks</b>	Move from FY 2023 to FY 2024				
<b>Action</b>		<b>Date</b>		<b>Type</b>	
<b>Remarks</b>					
<b>Action</b>		<b>Date</b>		<b>Type</b>	
<b>Remarks</b>					
<b>Action</b>		<b>Date</b>		<b>Type</b>	
<b>Remarks</b>					

FY	Source	Phase	Federal	Local/Match	Total
		PE	\$0	\$51,700	\$51,700
		ROW	\$0	\$100,000	\$100,000
2025	TMA-STBG	CON	\$543,360	\$135,840	\$679,200
<b>Total Project Cost</b>			<b>\$543,360</b>	<b>\$287,540</b>	<b>\$830,900</b>

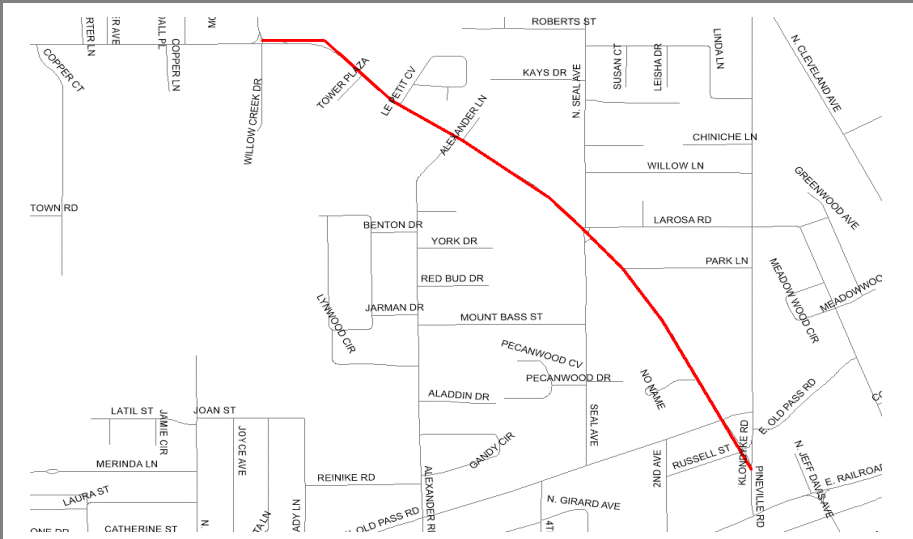
\*These projects are eligible for Special Match Credit if the LPA chooses to utilize

# Mississippi Gulf Coast Metropolitan Planning Organization

## FY2025-2028 Transportation Improvement Program (TIP)



<b>County</b>	Harrison	<b>Agency</b>	Long Beach
<b>Improvement Type</b>	Bike/Ped	<b>Route</b>	Pineville Road PH II
<b>Project Termini</b>	Harper McCaughan to Klondyke Road		
<b>Project Number</b>			
<b>Project Description</b>	Pedestrian access and safety		



### Project Notes

<b>Action</b>	Add to TIP	<b>Date</b>	8/23/2020	<b>Type</b>	Amend
<b>Remarks</b>					
<b>Action</b>	Change funding source	<b>Date</b>	10/6/2022	<b>Type</b>	Mod
<b>Remarks</b>	Change from TMA-STBG to Carbon Reduction Program				
<b>Action</b>	Increase funding	<b>Date</b>	10/6/2022	<b>Type</b>	Mod
<b>Remarks</b>	Increase funding by 20%				
<b>Action</b>	Add fundinig	<b>Date</b>	8/8/2024	<b>Type</b>	Amend
<b>Remarks</b>	\$298,400				
<b>Action</b>		<b>Date</b>		<b>Type</b>	
<b>Remarks</b>					
<b>Action</b>		<b>Date</b>		<b>Type</b>	
<b>Remarks</b>					
<b>Action</b>		<b>Date</b>		<b>Type</b>	
<b>Remarks</b>					

FY	Source	Phase	Federal	Local/Match	Total
		PE	\$0	\$97,300	\$97,300
		ROW	\$0	\$50,000	\$50,000
2025	TMA-CRP	CON	\$480,000	\$120,000	\$600,000
2025	TMA-STBG	CON	\$298,400	\$74,600	\$373,000
<b>Total Project Cost</b>			<b>\$778,400</b>	<b>\$341,900</b>	<b>\$1,120,300</b>

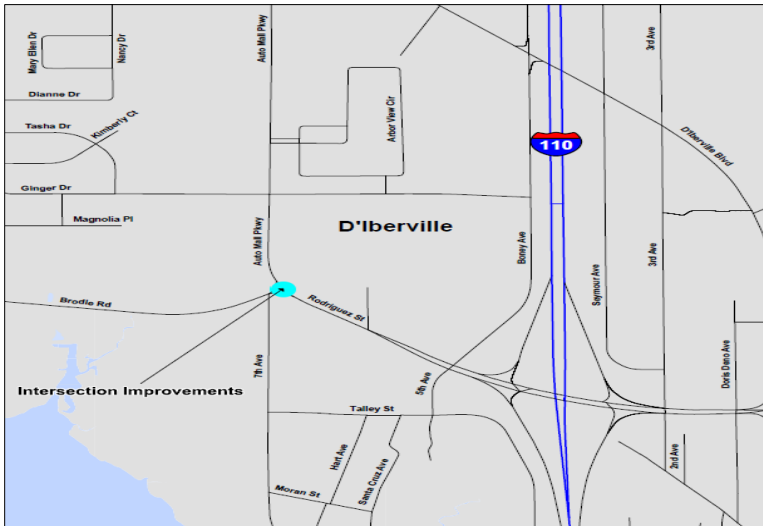
\*These projects are eligible for Special Match Credit if the LPA chooses to utilize

# Mississippi Gulf Coast Metropolitan Planning Organization

## FY2025-2028 Transportation Improvement Program (TIP)



<b>County</b>	Harrison	<b>Agency</b>	D' Iberville
<b>Improvement Type</b>	Intersection	<b>Route</b>	Brodie Road
<b>Project Termini</b>	Brodie Road – at Automall Parkway		
<b>Project Number</b>			
<b>Project Description</b>	Project will improve traffic flow at the Brodie Road/Automall Parkway intersection with a roundabout. Project Purpose: Traffic flow		



FY	Source	Phase	Federal	Local/Match	Total
		PE	\$0	\$54,000	\$54,000
		ROW	\$0	\$50,000	\$50,000
2026	TMA-STBG	CON	\$432,000	\$108,000	\$540,000
<b>Total Project Cost</b>			<b>\$432,000</b>	<b>\$212,000</b>	<b>\$644,000</b>

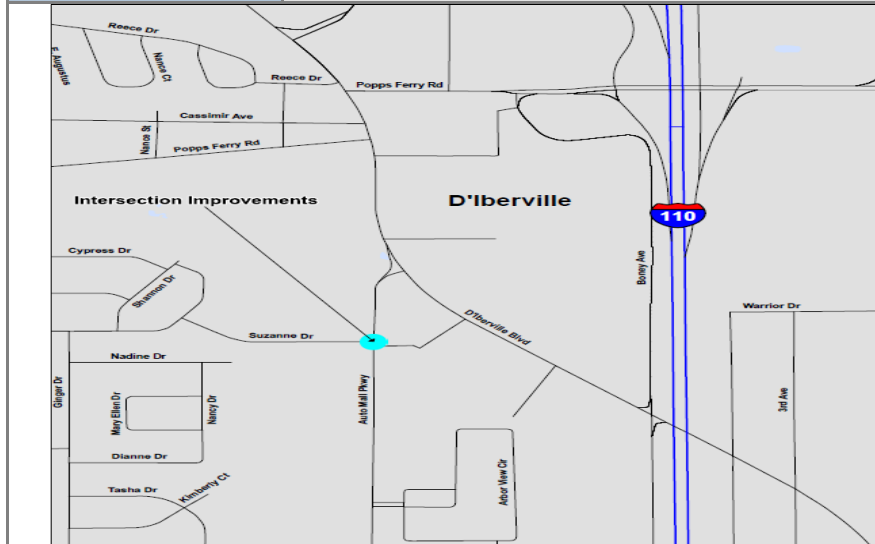
Project Notes					
Action	Add to TIP	Date	8/1/2020	Type	Amend
Remarks	\$432,000				
Action		Date		Type	
Remarks					
Action		Date		Type	
Remarks					
Action		Date		Type	
Remarks					
Action		Date		Type	
Remarks					
Action		Date		Type	
Remarks					
Action		Date		Type	
Remarks					
*These projects are eligible for Special Match Credit if the LPA chooses to utilize					

# Mississippi Gulf Coast Metropolitan Planning Organization

## FY2025-2028 Transportation Improvement Program (TIP)



<b>County</b>	Harrison	<b>Agency</b>	Diberville	
<b>Improvement Type</b>	Intersection	<b>Route</b>	Suzanne Drive	
<b>Project Termini</b>	Suzanne Drive – at Automall Parkway			
<b>Project Number</b>				
<b>Project Description</b>	Project will realign intersection from its current offset condition allowing east and west bound traffic to flow concurrently. Project Purpose: Traffic flow			



FY	Source	Phase	Federal	Local/Match	Total
		PE	\$0	\$108,131	\$108,131
		ROW	\$0	\$50,000	\$50,000
2025	TMA-STBG	CON	\$480,000	\$120,000	\$600,000
<b>Total Project Cost</b>			<b>\$480,000</b>	<b>\$278,131</b>	<b>\$758,131</b>

### Project Notes

<b>Action</b>	Add to TIP	<b>Date</b>	8/1/2020	<b>Type</b>	Amend
<b>Remarks</b>	\$480,000				
<b>Action</b>	Add Phases	<b>Date</b>	6/2/2023	<b>Type</b>	Mod
<b>Remarks</b>	Added PE for special match credit				
<b>Action</b>		<b>Date</b>		<b>Type</b>	
<b>Remarks</b>					
<b>Action</b>		<b>Date</b>		<b>Type</b>	
<b>Remarks</b>					
<b>Action</b>		<b>Date</b>		<b>Type</b>	
<b>Remarks</b>					
<b>Action</b>		<b>Date</b>		<b>Type</b>	
<b>Remarks</b>					

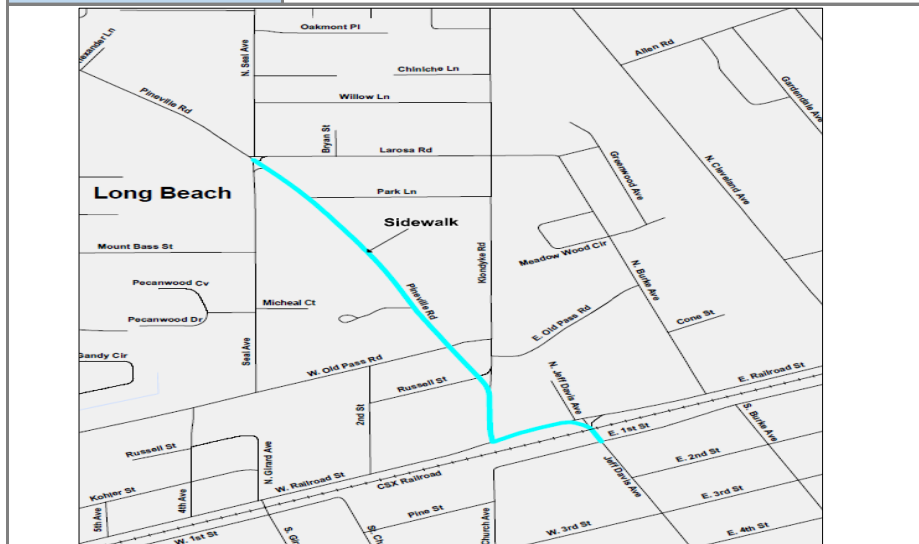
\*These projects are eligible for Special Match Credit if the LPA chooses to utilize

# Mississippi Gulf Coast Metropolitan Planning Organization

## FY2025-2028 Transportation Improvement Program (TIP)



<b>County</b>	Harrison	<b>Agency</b>	Long Beach
<b>Improvement Type</b>	Bike/Ped	<b>Route</b>	Pineville Road PH III
<b>Project Termini</b>	Seal Avenue to Railroad Street		
<b>Project Number</b>			
<b>Project Description</b>	Continuation of previous projects on Pineville Road to connect to sidewalks on Jeff Davis Avenue.		Project Length: .71 mile



FY	Source	Phase	Federal	Local/Match	Total
		PE	\$0	\$101,472	\$101,472
		ROW	\$0	\$100,000	\$100,000
2027	TMA-STBG	CON	\$811,776	\$202,944	\$1,014,720
<b>Total Project Cost</b>			<b>\$811,776</b>	<b>\$404,416</b>	<b>\$1,216,192</b>

### Project Notes

Action	Add to TIP	Date	8/1/2020	Type	Amend
Remarks	\$600,000				
Action	Cost increase	Date	8/8/2024	Type	Amend
Remarks	\$211,776				
Action		Date		Type	
Remarks					
Action		Date		Type	
Remarks					
Action		Date		Type	
Remarks					
Action		Date		Type	
Remarks					
Action		Date		Type	
Remarks					

\*These projects are eligible for Special Match Credit if the LPA chooses to utilize

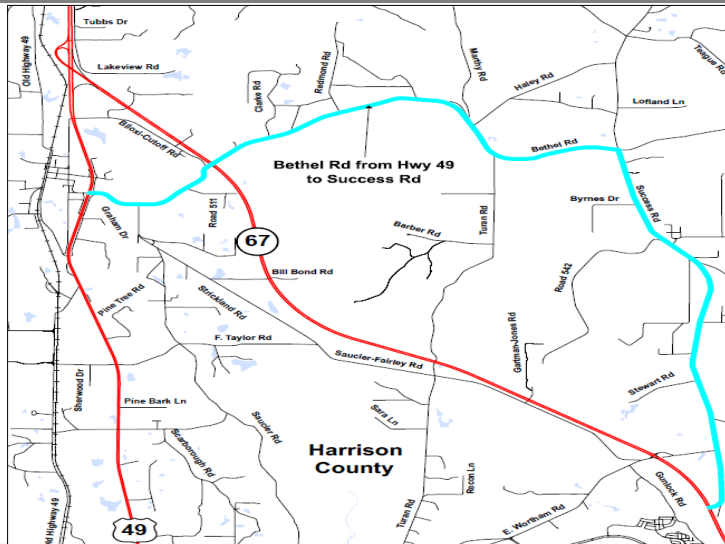


# Mississippi Gulf Coast Metropolitan Planning Organization

## FY2025-2028 Transportation Improvement Program (TIP)



<b>County</b>	Harrison	<b>Agency</b>	Harrison
<b>Improvement Type</b>	Multimodal	<b>Route</b>	Bethel Road/Success Road
<b>Project Termini</b>	Bethel Road – US 49 to Success Road /Success Road – Bethel Road to Hwy 67		
<b>Project Number</b>			
<b>Project Description</b>	Chip seal, fog seal, base and edge repairs, shoulder material, striping and pavement signs. Project Length: 9.5 miles		



FY	Source	Phase	Federal	Local/Match	Total
		PE	\$0	\$50,000	\$50,000
2025	TMA-STBG	CON	\$471,200	\$117,800	\$589,000
<b>Total Project Cost</b>			<b>\$471,200</b>	<b>\$167,800</b>	<b>\$639,000</b>

Project Notes					
Action	Add to TIP	Date	8/1/2020	Type	Amend
Remarks	\$471,200				
Action		Date		Type	
Remarks					
Action		Date		Type	
Remarks					
Action		Date		Type	
Remarks					
Action		Date		Type	
Remarks					
Action		Date		Type	
Remarks					
Action		Date		Type	
Remarks					
*These projects are eligible for Special Match Credit if the LPA chooses to utilize					

# Mississippi Gulf Coast Metropolitan Planning Organization

## FY2025-2028 Transportation Improvement Program (TIP)



<b>County</b>	Harrison	<b>Agency</b>	Biloxi	
<b>Improvement Type</b>	Intersection	<b>Route</b>	Pass Road	
<b>Project Termini</b>	at Rodenburg Avenue			
<b>Project Number</b>				
<b>Project Description</b>	Upgrade intersection, add mast arms			



FY	Source	Phase	Federal	Local/Match	Total
		PE	\$0	\$63,070	\$63,070
		ROW	\$0	\$50,000	\$50,000
2025	TMA-CRP	CON	\$504,560	\$126,140	\$630,700
<b>Total Project Cost</b>			<b>\$504,560</b>	<b>\$239,210</b>	<b>\$743,770</b>

### Project Notes

<b>Action</b>	Add to TIP	<b>Date</b>	10/31/2021	<b>Type</b>	Amend
<b>Remarks</b>	New project - \$504,560 HIP				
<b>Action</b>	Funding swap	<b>Date</b>	6/26/2023	<b>Type</b>	Mod
<b>Remarks</b>	Changed funding source from HIP to CRP \$504,560				
<b>Action</b>		<b>Date</b>		<b>Type</b>	
<b>Remarks</b>					
<b>Action</b>		<b>Date</b>		<b>Type</b>	
<b>Remarks</b>					
<b>Action</b>		<b>Date</b>		<b>Type</b>	
<b>Remarks</b>					
<b>Action</b>		<b>Date</b>		<b>Type</b>	
<b>Remarks</b>					

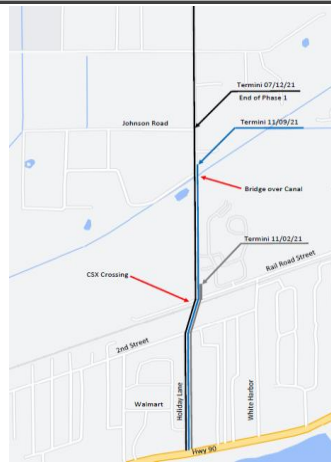
\*These projects are eligible for Special Match Credit if the LPA chooses to utilize

# Mississippi Gulf Coast Metropolitan Planning Organization

## FY2025-2028 Transportation Improvement Program (TIP)



<b>County</b>	Harrison	<b>Agency</b>	Long Beach
<b>Improvement Type</b>	New construction	<b>Route</b>	Beatline Parkway
<b>Project Termini</b>	US 90 to Johnson Road		
<b>Project Number</b>			
<b>Project Description</b>	The project will connect US 90 to Beatline Road by constructing a five-lane roadway with multiuse pathway.		



FY	Source	Phase	Federal	Local/Match	Total
2025	RAISE	PE	\$2,000,808	\$500,202	\$2,501,010
2025	RAISE	ROW	\$1,320,000	\$330,000	\$1,650,000
2025	RAISE	Railroad	\$1,012,000	\$253,000	\$1,265,000
2025	RAISE	CON	\$12,475,632	\$3,118,908	\$15,594,540
<b>Total Project Cost</b>			<b>\$16,808,440</b>	<b>\$4,202,110</b>	<b>\$21,010,550</b>

Project Notes					
Action	Add to TIP	Date	2/24/2022	Type	Amend
Remarks					
Action		Date		Type	
Remarks					
Action		Date		Type	
Remarks					
Action		Date		Type	
Remarks					
Action		Date		Type	
Remarks					
Action		Date		Type	
Remarks					
*These projects are eligible for Special Match Credit if the LPA chooses to utilize					

# Mississippi Gulf Coast Metropolitan Planning Organization

## FY2025-2028 Transportation Improvement Program (TIP)



<b>County</b>	Harrison County	<b>Agency</b>	Biloxi	
<b>Improvement Type</b>	Intersection	<b>Route</b>	Pass Road	
<b>Project Termini</b>	Iberville Drive			
<b>Project Number</b>				
<b>Project Description</b>	Project replaces old hanging traffic signals with new storm resistant mast arm traffic signals. Includes new pedesrian crossings.			



FY	Source	Phase	Federal	Local/Match	Total
		PE	\$0	\$30,500	\$30,500
		ROW	\$0	\$20,000	\$20,000
2026	TMA-CRP	CON	\$430,560	\$107,640	\$538,200
<b>Total Project Cost</b>			<b>\$430,560</b>	<b>\$158,140</b>	<b>\$588,700</b>

Project Notes					
Action	Add to TIP	Date	8/4/2022	Type	Amend
Remarks	\$430,560				
Action	Funding swap	Date	6/27/2023	Type	Mod
Remarks	Change funding source from HIP to CRP - \$430,560				
Action		Date		Type	
Remarks					
Action		Date		Type	
Remarks					
Action		Date		Type	
Remarks					
Action		Date		Type	
Remarks					
Action		Date		Type	
Remarks					
*These projects are eligible for Special Match Credit if the LPA chooses to utilize					

# Mississippi Gulf Coast Metropolitan Planning Organization

## FY2023-2026 Transportation Improvement Program (TIP)



<b>County</b>	Harrison County	<b>Agency</b>	Biloxi	
<b>Improvement Type</b>	Intersection	<b>Route</b>	Pass Road	
<b>Project Termini</b>	McDonnell Avenue			
<b>Project Number</b>				
<b>Project Description</b>	Project replaces old hanging traffic signals with new storm resistant mast arm traffic signals. Includes new pedesrian crossings.			



FY	Source	Phase	Federal	Local/Match	Total
		PE	\$0	\$33,300	\$33,300
		ROW	\$0	\$40,000	\$40,000
Illustrative	N/A	CON	\$0	\$122,180	\$610,900
<b>Total Project Cost</b>			<b>\$0</b>	<b>\$195,480</b>	<b>\$684,200</b>

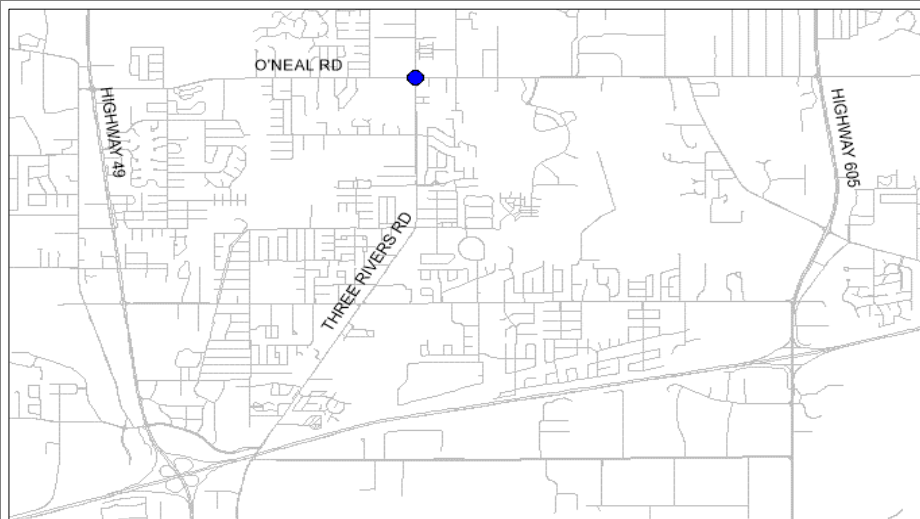
Project Notes					
Action	Add to TIP	Date	8/4/2022	Type	Amend
Remarks	\$488,720				
Action	Deallocate funding	Date	10/3/2023	Type	Amend
Remarks	At City's request, deallocate and move to illustrative				
Action		Date		Type	
Remarks					
Action		Date		Type	
Remarks					
Action		Date		Type	
Remarks					
Action		Date		Type	
Remarks					
Action		Date		Type	
Remarks					
*These projects are eligible for Special Match Credit if the LPA chooses to utilize					

# Mississippi Gulf Coast Metropolitan Planning Organization

## FY2025-2028 Transportation Improvement Program (TIP)



<b>County</b>	Harrison	<b>Agency</b>	Gulfport	
<b>Improvement Type</b>	Intersection	<b>Route</b>	Oneal Road	
<b>Project Termini</b>	Three Rivers Road			
<b>Project Description</b>	Improvements include dedicated left and right turn lanes for north and southbound lanes along Three Rivers Road and mast arm traffic signals with liminaries and Glance monitoring system.			



FY	Source	Phase	Federal	Local/Match	Total
		PE	\$0	\$155,000	\$155,000
2027	TMA-STBG	CON	\$1,240,000	\$310,000	\$1,550,000
<b>Total Project Cost</b>			<b>\$1,240,000</b>	<b>\$465,000</b>	<b>\$1,705,000</b>

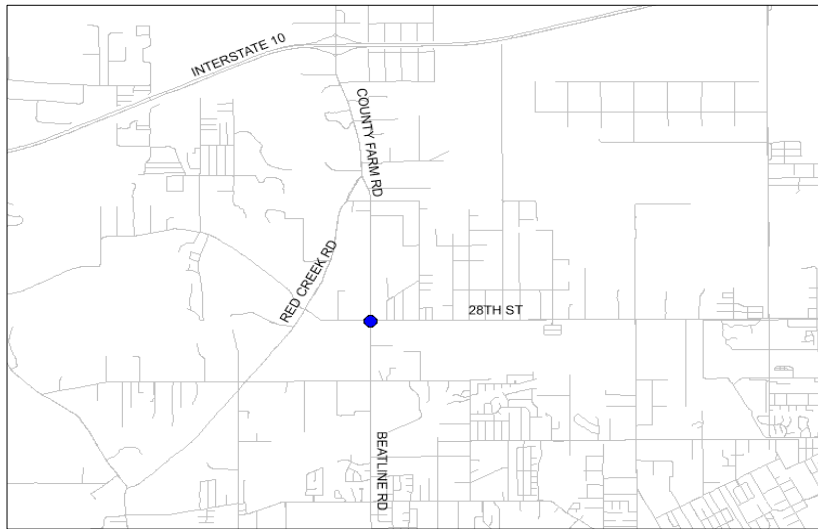
Project Notes					
Action	Add to TIP	Date	8/4/2022	Type	Amend
Remarks	\$440,000				
Action	Increase Cost	Date	8/8/2024	Type	Amend
Remarks	\$800,000				
Action		Date		Type	
Remarks					
Action		Date		Type	
Remarks					
Action		Date		Type	
Remarks					
Action		Date		Type	
Remarks					
Action		Date		Type	
Remarks					
*These projects are eligible for Special Match Credit if the LPA chooses to utilize					

# Mississippi Gulf Coast Metropolitan Planning Organization

## FY2025-2028 Transportation Improvement Program (TIP)



<b>County</b>	Harrison County	<b>Agency</b>	Long Beach	
<b>Improvement Type</b>	Intersection	<b>Route</b>	Beatline Road	
<b>Project Termini</b>	28th Street			
<b>Project Number</b>				
<b>Project Description</b>	The addition of turning lanes, striping and a flashing beacon are proposed for this intersection			



FY	Source	Phase	Federal	Local/Match	Total
		PE	\$0	\$36,365	\$36,365
		ROW	\$0	\$50,000	\$50,000
2027	TMA-STBG	CON	\$287,750	\$75,750	\$363,650
<b>Total Project Cost</b>			<b>\$287,750</b>	<b>\$162,115</b>	<b>\$450,015</b>

Project Notes					
Action	Add to TIP	Date	8/4/2022	Type	Amend
Remarks	\$287,750				
Action		Date		Type	
Remarks					
Action		Date		Type	
Remarks					
Action		Date		Type	
Remarks					
Action		Date		Type	
Remarks					
Action		Date		Type	
Remarks					
Action		Date		Type	
Remarks					
*These projects are eligible for Special Match Credit if the LPA chooses to utilize					

# Mississippi Gulf Coast Metropolitan Planning Organization

## FY2025-2028 Transportation Improvement Program (TIP)



<b>County</b>	Harrison County	<b>Agency</b>	Long Beach
<b>Improvement Type</b>	Intersection	<b>Route</b>	Jeff Davis Avenue
<b>Project Termini</b>	West Railroad Street		
<b>Project Number</b>			
<b>Project Description</b>	Additional turn lanes, striping, and miscellaneous intersection improvements at W. Railroad St. and Jeff Davis Ave.		



FY	Source	Phase	Federal	Local/Match	Total
		PE	\$0	\$80,913	\$80,913
		ROW	\$0	\$50,000	\$50,000
2027	TMA-STBG	CON	\$647,304	\$161,826	\$809,130
<b>Total Project Cost</b>			<b>\$647,304</b>	<b>\$292,739</b>	<b>\$940,043</b>

Project Notes					
Action	Add to TIP	Date	8/4/2022	Type	Amend
Remarks	\$542,800				
Action	Project description	Date	11/8/2022	Type	Mod
Remarks	Provided an improved project description				
Action	Break out project	Date	8/8/2024	Type	Amend
Remarks	3 downtown interections into seprate projects				
Action	Increase cost	Date	8/8/2024	Type	Amend
Remarks	Add \$104,504				
Action		Date		Type	
Remarks					
Action		Date		Type	
Remarks					
Action		Date		Type	
Remarks					
*These projects are eligible for Special Match Credit if the LPA chooses to utilize					

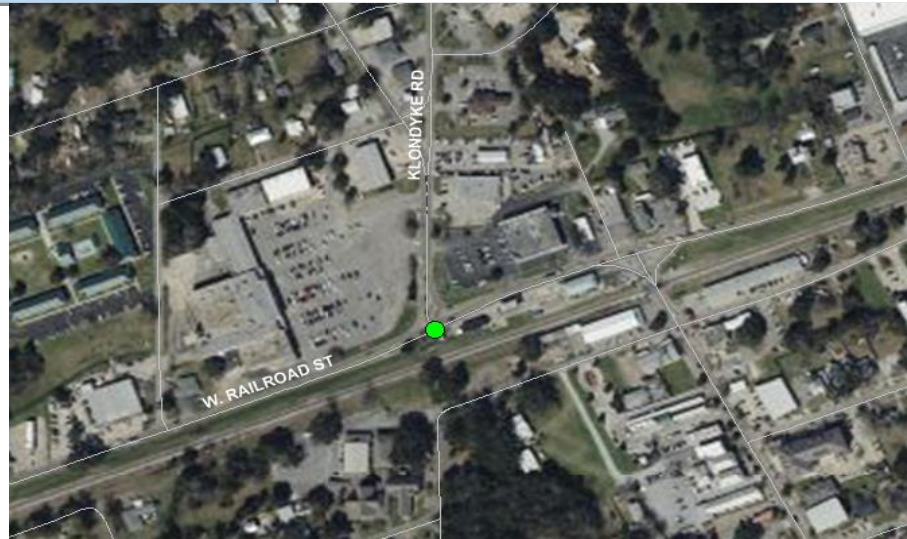


# Mississippi Gulf Coast Metropolitan Planning Organization

## FY2025-2028 Transportation Improvement Program (TIP)



<b>County</b>	Harrison County	<b>Agency</b>	Long Beach
<b>Improvement Type</b>	Intersection	<b>Route</b>	Klondyke Road
<b>Project Termini</b>	West Railroad Street		
<b>Project Number</b>			
<b>Project Description</b>	The construction of a roundabout at Klondyke Road and W. Railroad Street.		



FY	Source	Phase	Federal	Local/Match	Total
		PE	\$0	\$275,466	\$275,466
		ROW	\$0	\$50,000	\$50,000
2028	TMA-STBG	CON	\$2,203,732	\$550,933	\$2,754,665
<b>Total Project Cost</b>			<b>\$2,203,732</b>	<b>\$876,399</b>	<b>\$3,080,131</b>

Project Notes					
Action	Add to TIP	Date	8/4/2022	Type	Amend
Remarks	\$542,800				
Action	Project description	Date	11/8/2022	Type	Mod
Remarks	Provided an improved project description				
Action	Break out project	Date	8/8/2024	Type	Amend
Remarks	3 downtown interections into seprate projects				
Action	Increase cost	Date	8/8/2024	Type	Amend
Remarks	\$2,203,732				
Action		Date		Type	
Remarks					
Action		Date		Type	
Remarks					
Action		Date		Type	
Remarks					
*These projects are eligible for Special Match Credit if the LPA chooses to utilize					

# Mississippi Gulf Coast Metropolitan Planning Organization

## FY2025-2028 Transportation Improvement Program (TIP)



<b>County</b>	Harrison County	<b>Agency</b>	Long Beach
<b>Improvement Type</b>	Intersection	<b>Route</b>	Klondyke Road
<b>Project Termini</b>	Pineville Road		
<b>Project Number</b>			
<b>Project Description</b>	The addition of signalization at Klondyke and Pineville Roads.		



FY	Source	Phase	Federal	Local/Match	Total
		PE	\$0	\$122,949	\$122,949
		ROW	\$0	\$50,000	\$50,000
2027	TMA-STBG	CON	\$983,595	\$245,899	\$1,229,494
<b>Total Project Cost</b>			<b>\$983,595</b>	<b>\$418,848</b>	<b>\$1,402,443</b>

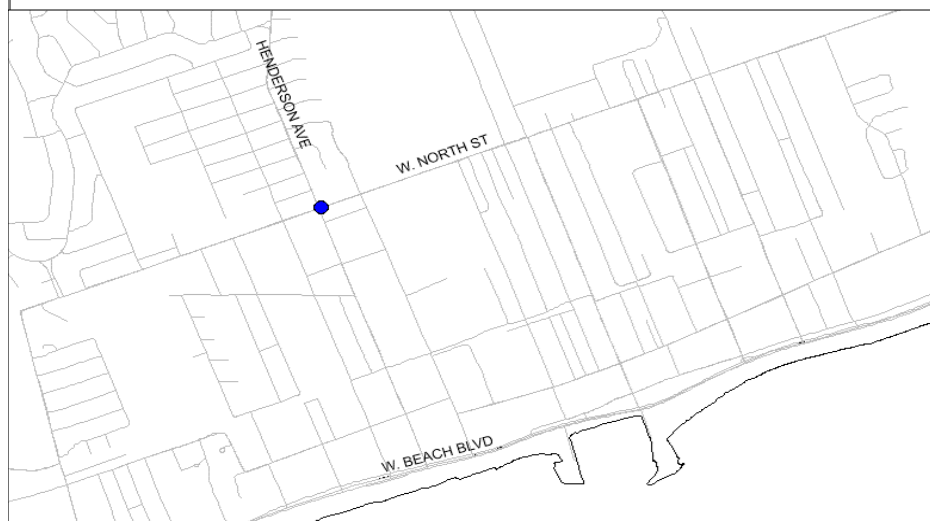
Project Notes					
Action	Add to TIP	Date	8/4/2022	Type	Amend
Remarks	\$542,800				
Action	Project description	Date	11/8/2022	Type	Mod
Remarks	Provided an improved project description				
Action	Break out project	Date	8/8/2024	Type	Amend
Remarks	3 downtown interections into seprate projects				
Action	Increase cost	Date	8/8/2024	Type	Amend
Remarks	\$983,595				
Action		Date		Type	
Remarks					
Action		Date		Type	
Remarks					
Action		Date		Type	
Remarks					
*These projects are eligible for Special Match Credit if the LPA chooses to utilize					

# Mississippi Gulf Coast Metropolitan Planning Organization

## FY2025-2028 Transportation Improvement Program (TIP)



<b>County</b>	Harrison County	<b>Agency</b>	Pass Christian
<b>Improvement Type</b>	Intersection	<b>Route</b>	North Street
<b>Project Termini</b>	Henderson Avenue		
<b>Project Number</b>			
<b>Project Description</b>	This project adds signalization, turn lanes, striping and pedestrian crossings to provide more efficient and safer travel in the area.		



FY	Source	Phase	Federal	Local/Match	Total
		PE	\$0	\$60,908	\$60,908
		ROW	\$0	\$100,000	\$100,000
2027	TMA-STBG	CON	\$487,264	\$121,816	\$609,080
<b>Total Project Cost</b>			<b>\$487,264</b>	<b>\$282,724</b>	<b>\$769,988</b>

Project Notes					
Action	Add to TIP	Date	8/4/2022	Type	Amend
Remarks	\$487,264				
Action		Date		Type	
Remarks					
Action		Date		Type	
Remarks					
Action		Date		Type	
Remarks					
Action		Date		Type	
Remarks					
Action		Date		Type	
Remarks					
*These projects are eligible for Special Match Credit if the LPA chooses to utilize					

# Mississippi Gulf Coast Metropolitan Planning Organization

## FY2025-2028 Transportation Improvement Program (TIP)



<b>County</b>	Harrison	<b>Agency</b>	Gulfport
<b>Improvement Type</b>	Multimodal	<b>Route</b>	Washington Avenue
<b>Project Termini</b>	Airport Road to South Vista Drive		
<b>Project Number</b>			
<b>Project Description</b>	Improvements include the extension of the Hewes Avenue boulevard section along Washington Avenue, street lighting, and minimal drainage improvements. This project in conjunction with the current Airport Road project will provide a 4-lane road system connecting the Airport, Air National Guard, and commuters to Highway 49, Interstate 10, and commercial development north of Interstate 10 via the BUILD Grant project.		



FY	Source	Phase	Federal	Local/Match	Total
		PE	\$0	\$350,000	\$350,000
		ROW	\$0	\$50,000	\$50,000
2027	TMA-STBG	CON	\$2,800,000	\$700,000	\$3,500,000
<b>Total Project Cost</b>			<b>\$2,800,000</b>	<b>\$1,100,000</b>	<b>\$3,900,000</b>

Project Notes					
Action	Add to TIP	Date	8/4/2022	Type	Amend
Remarks	\$2,800,000				
Action		Date		Type	
Remarks					
Action		Date		Type	
Remarks					
Action		Date		Type	
Remarks					
Action		Date		Type	
Remarks					
Action		Date		Type	
Remarks					
Action		Date		Type	
Remarks					
*These projects are eligible for Special Match Credit if the LPA chooses to utilize					

# Mississippi Gulf Coast Metropolitan Planning Organization

## FY2025-2028 Transportation Improvement Program (TIP)



<b>County</b>	Harrison	<b>Agency</b>	Diberville
<b>Improvement Type</b>	Intersection/Multimodal	<b>Route</b>	Mallet Road - Lamey Bridge Rd
<b>Project Termini</b>	Mallett/Sangani Blvd from East Wal Mart Dr to Daisy Vestry Rd and Lamey Bridge Rd from I-110 to Cypress Creek		
<b>Project Number</b>			
<b>Project Description</b>	The project includes reconfiguring the Mallet Rd/Lamey Bridge Rd intersection and widening of Mallett Road, an existing three lane roadway, from Lamey Bridge Road to Daisy Vestry Road to match the four lane sections on either end of this roadway segment.		



FY	Source	Phase	Federal	Local/Match	Total
	MS Bond Bill	PE	\$0	\$ 1,000,000	\$ 1,000,000
	MS Bond Bill	ROW	\$0	\$ 2,100,000	\$ 2,100,000
2025	MS Bond Bill	CON	\$0	\$4,650,000	\$ 4,650,000
2025	TMA-CRP	CON	\$1,500,000	\$375,000	\$1,875,000
2025	DOT-HIP	CON	\$2,000,000	\$500,000	\$2,500,000
	N/A	CON	\$0	\$2,675,000	\$2,675,000
<b>Total Project Cost</b>			<b>\$3,500,000</b>	<b>\$11,300,000</b>	<b>\$14,800,000</b>

### Project Notes

<b>Action</b>	Combine	<b>Date</b>	3/14/2024	<b>Type</b>	Amend
<b>Remarks</b>	Combine Mallet Intersection and Roadway Projects				
<b>Action</b>	Add funding	<b>Date</b>	8/8/2024	<b>Type</b>	Amend
<b>Remarks</b>	1500000 TMA-CRP - Call for projects				
<b>Action</b>	Add funding	<b>Date</b>	8/8/2024	<b>Type</b>	Amend
<b>Remarks</b>	\$2000000 THUD - DOT-HIP				
<b>Action</b>		<b>Date</b>		<b>Type</b>	
<b>Remarks</b>					
<b>Action</b>		<b>Date</b>		<b>Type</b>	
<b>Remarks</b>					
<b>Action</b>		<b>Date</b>		<b>Type</b>	
<b>Remarks</b>					
<b>Action</b>		<b>Date</b>		<b>Type</b>	
<b>Remarks</b>					

\*These projects are eligible for Special Match Credit if the LPA chooses to utilize

# Mississippi Gulf Coast Metropolitan Planning Organization

## FY2025-2028 Transportation Improvement Program (TIP)



<b>County</b>	Harrison	<b>Agency</b>	Diberville
<b>Improvement Type</b>	Bike/Ped	<b>Route</b>	New ped bridge and walking path
<b>Project Termini</b>	Gorenflo Road to new recreation area		
<b>Project Number</b>			
<b>Project Description</b>	The Bicycle and Pedestrian Bridge will parallel the Lamey Bridge Road I-10 Overpass just to the East, providing a safe alternative to the underserved neighborhoods to the south of I-10 to access the D'Iberville commercial area and recreation opportunities.		



FY	Source	Phase	Federal	Local/Match	Total
Illustrative	N/A	PE	\$0	\$ 450,000	\$ 450,000
Illustrative	N/A	ENV	\$0	\$ 450,000	\$ 450,000
Illustrative	N/A	ROW	\$0	\$ 500,000	\$ 500,000
Illustrative	N/A	CON	\$0	\$ 10,764,000	\$ 10,764,000
<b>Total Project Cost</b>			<b>\$0</b>	<b>\$12,164,000</b>	<b>\$12,164,000</b>

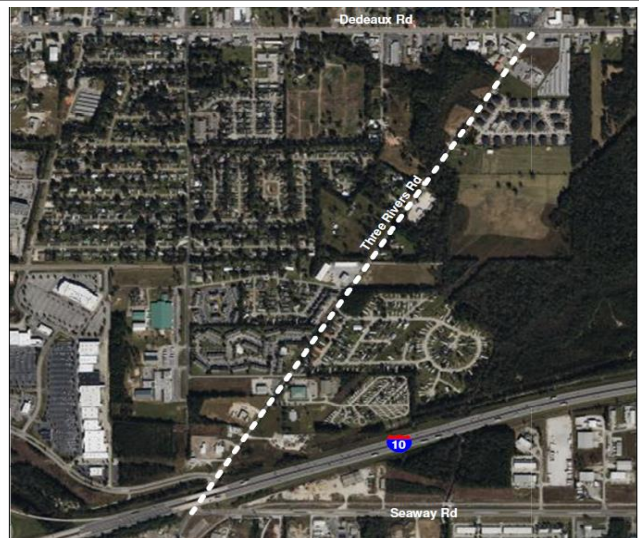
Project Notes					
Action	Add to TIP	Date	3/9/2023	Type	Amend
Remarks	No funding in place - RAISE grant requested				
Action		Date		Type	
Remarks					
Action		Date		Type	
Remarks					
Action		Date		Type	
Remarks					
Action		Date		Type	
Remarks					
Action		Date		Type	
Remarks					
Action		Date		Type	
Remarks					
*These projects are eligible for Special Match Credit if the LPA chooses to utilize					

# Mississippi Gulf Coast Metropolitan Planning Organization

## FY2025-2028 Transportation Improvement Program (TIP)



<b>County</b>	Harrison	<b>Agency</b>	Gulfport
<b>Improvement Type</b>	Multimodal	<b>Route</b>	Three Rivers Road
<b>Project Termini</b>	Seaway Road to Dedeaux Road		
<b>Project Number</b>			
<b>Project Description</b>	Widen Three Rivers Road and provide pedestrian pathways		



### Project Notes

<b>Action</b>	Add to TIP	<b>Date</b>	3/9/2023	<b>Type</b>	Amend
<b>Remarks</b>	No funding in place - RAISE grant requested				
<b>Action</b>		<b>Date</b>		<b>Type</b>	
<b>Remarks</b>					
<b>Action</b>		<b>Date</b>		<b>Type</b>	
<b>Remarks</b>					
<b>Action</b>		<b>Date</b>		<b>Type</b>	
<b>Remarks</b>					
<b>Action</b>		<b>Date</b>		<b>Type</b>	
<b>Remarks</b>					
<b>Action</b>		<b>Date</b>		<b>Type</b>	
<b>Remarks</b>					

FY	Source	Phase	Federal	Local/Match	Total
Illustrative	N/A	PE	\$0	\$ 3,292,719	\$ 3,292,719
Illustrative	N/A	ENV	\$0	\$ 1,365,416	\$ 1,365,416
Illustrative	N/A	ROW	\$0	\$ 7,601,168	\$ 7,601,168
Illustrative	N/A	CON	\$0	\$ 10,787,258	\$ 10,787,258
<b>Total Project Cost</b>			<b>\$0</b>	<b>\$23,046,561</b>	<b>\$23,046,561</b>

\*These projects are eligible for Special Match Credit if the LPA chooses to utilize

# Mississippi Gulf Coast Metropolitan Planning Organization

## FY2025-2028 Transportation Improvement Program (TIP)



<b>County</b>	Harrison	<b>Agency</b>	Coast Transit Authority
<b>Improvement Type</b>	Multimodal	<b>Route</b>	
<b>Project Termini</b>			
<b>Project Number</b>			
<b>Project Description</b>	Coast Transit Authority/Memorial Hospital Gulfport Intermodal Facility		



FY	Source	Phase	Federal	Local/Match	Total
Illustrative	N/A	CON	\$0	\$23,962,848	\$ 23,962,848
<b>Total Project Cost</b>			<b>\$0</b>	<b>\$23,962,848</b>	<b>\$23,962,848</b>

### Project Notes

<b>Action</b>	Add to TIP	<b>Date</b>	3/14/2024	<b>Type</b>	Amend
<b>Remarks</b>	No funding in place - RAISE grant requested				
<b>Action</b>		<b>Date</b>		<b>Type</b>	
<b>Remarks</b>					
<b>Action</b>		<b>Date</b>		<b>Type</b>	
<b>Remarks</b>					
<b>Action</b>		<b>Date</b>		<b>Type</b>	
<b>Remarks</b>					
<b>Action</b>		<b>Date</b>		<b>Type</b>	
<b>Remarks</b>					
<b>Action</b>		<b>Date</b>		<b>Type</b>	
<b>Remarks</b>					



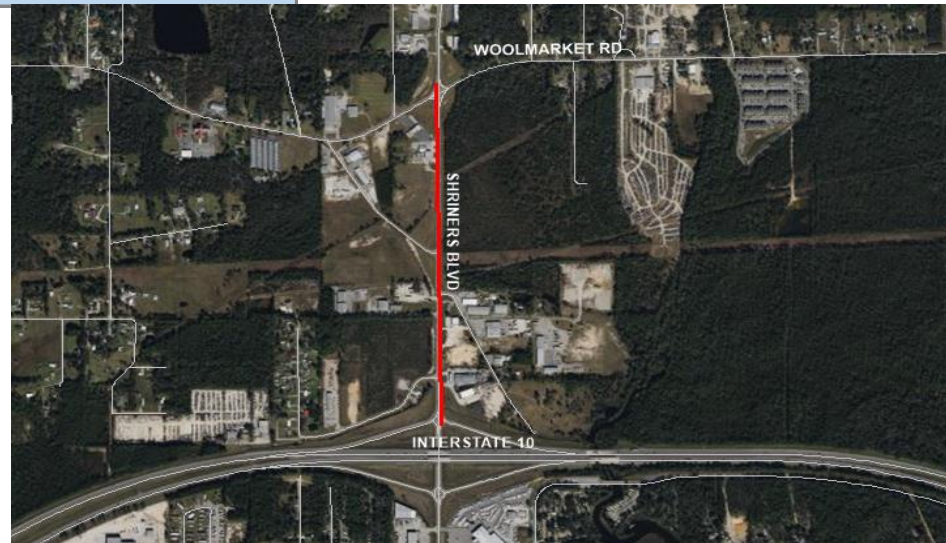


# Mississippi Gulf Coast Metropolitan Planning Organization

## FY2025-2028 Transportation Improvement Program (TIP)



<b>County</b>	Harrison	<b>Agency</b>	Biloxi
<b>Improvement Type</b>	Multimodal	<b>Route</b>	Shriners Boulevard
<b>Project Termini</b>	I-10 to Woolmarket Road		
<b>Project Number</b>			
<b>Project Description</b>	This project will upgrade Shriners Blvd. from two lanes to four lanes with a center median with turn bays. In addition to the additional lanes, this project will add multi-use pathways, drainage, striping, signage, and other associated appurtenances.		



### Project Notes

Action	New Project	Date	8/8/2024	Type	Amend
Remarks	\$2,760,000				
Action		Date		Type	
Remarks					
Action		Date		Type	
Remarks					
Action		Date		Type	
Remarks					
Action		Date		Type	
Remarks					
Action		Date		Type	
Remarks					
Action		Date		Type	
Remarks					

FY	Source	Phase	Federal	Local/Match	Total
		PE	\$0	\$345,000	\$345,000
2028	TMA-STBG	CON	\$2,760,000	\$ 690,000	\$ 3,450,000
<b>Total Project Cost</b>			<b>\$2,760,000</b>	<b>\$1,035,000</b>	<b>\$3,795,000</b>

\*These projects are eligible for Special Match Credit if the LPA chooses to utilize

# Mississippi Gulf Coast Metropolitan Planning Organization

## FY2025-2028 Transportation Improvement Program (TIP)



<b>County</b>	Harrison	<b>Agency</b>	D'Iberville
<b>Improvement Type</b>	Intesection	<b>Route</b>	Lamey Bridge Road
<b>Project Termini</b>	Big Ridge Road & Popp's Ferry Road		
<b>Project Number</b>			
<b>Project Description</b>	Project will construct northbound right turn lane from Lamey Bridge Road onto Big Ridge Road as well as the construction to complete the southbound right turn lane from Lamey Bridge Road onto Popp's Ferry Road.		



FY	Source	Phase	Federal	Local/Match	Total
		PE	\$0	\$71,311	\$71,311
		ROW	\$0	\$50,000	\$50,000
2028	TMA-CRP	CON	\$570,492	\$ 142,623	\$ 713,115
<b>Total Project Cost</b>			<b>\$570,492</b>	<b>\$263,934</b>	<b>\$834,426</b>

Project Notes					
Action	New Project	Date	8/8/2024	Type	Amend
Remarks	\$570,492				
Action		Date		Type	
Remarks					
Action		Date		Type	
Remarks					
Action		Date		Type	
Remarks					
Action		Date		Type	
Remarks					
Action		Date		Type	
Remarks					
Action		Date		Type	
Remarks					
*These projects are eligible for Special Match Credit if the LPA chooses to utilize					

# Mississippi Gulf Coast Metropolitan Planning Organization

## FY2025-2028 Transportation Improvement Program (TIP)



<b>County</b>	Harrison	<b>Agency</b>	D'Iberville
<b>Improvement Type</b>	Intersection	<b>Route</b>	Lamey Bridge Road
<b>Project Termini</b>	Lemoine Boulevard		
<b>Project Number</b>			
<b>Project Description</b>	Project will realign the lanes on the east and west sides of the intersection as well as adding a dedicated left turn lane for northbound traffic on Lamey Bridge Road into WalMart and a dedicated left turn lane for westbound traffic on Lemoine Boulevard onto Lamey Bridge Road. Project will also add pedestrian signals for protecting pedestrians crossing on the north side of intersection from Lemoine Boulevard to Walmart.		



### Project Notes

Action	New Project	Date	8/8/2024	Type	Amend
Remarks	\$888,628				
Action		Date		Type	
Remarks					
Action		Date		Type	
Remarks					
Action		Date		Type	
Remarks					
Action		Date		Type	
Remarks					
Action		Date		Type	
Remarks					

FY	Source	Phase	Federal	Local/Match	Total
		PE	\$0	\$126,078	\$126,078
		ROW	\$0	\$50,000	\$50,000
2028	TMA-CRP	CON	\$888,628	\$ 222,157	\$ 1,110,785
<b>Total Project Cost</b>			<b>\$888,628</b>	<b>\$398,235</b>	<b>\$1,286,863</b>

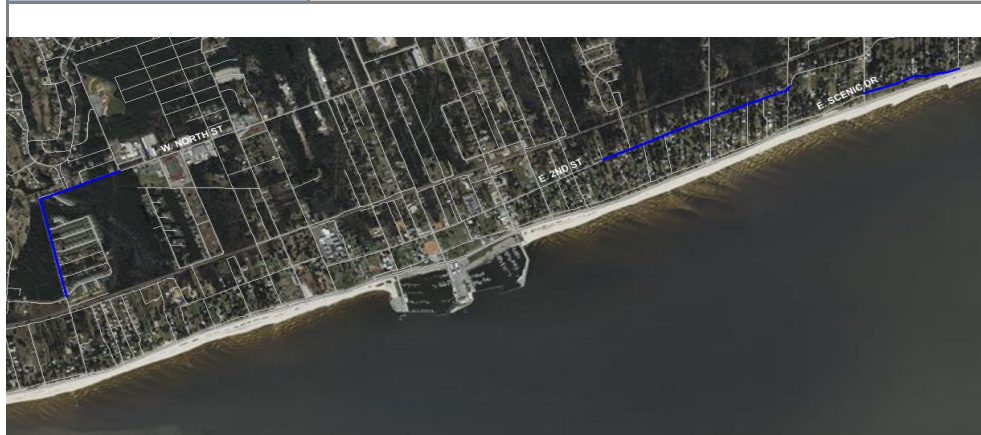
\*These projects are eligible for Special Match Credit if the LPA chooses to utilize

# Mississippi Gulf Coast Metropolitan Planning Organization

## FY2025-2028 Transportation Improvement Program (TIP)



<b>County</b>	Harrison	<b>Agency</b>	Pass Christian
<b>Improvement Type</b>	Bike/Ped	<b>Route</b>	City Wide
<b>Project Termini</b>	Cedar Ave, North St, Scenic Dr, and Second St		
<b>Project Number</b>			
<b>Project Description</b>	Along West North Street westerly and southerly on Cedar Avenue to Brill Street for 2,500 lf; Along East Second Street from Algernon to Lang Avenue for a distance of 4,277 lf; and, on East Scenic Drive from Menge Avenue to U.S. Hwy 90		



FY	Source	Phase	Federal	Local/Match	Total
		PE	\$0	\$136,568	\$136,568
2028	TMA-STBG	CON	\$1,092,548	\$ 273,137	\$ 1,365,685
<b>Total Project Cost</b>			<b>\$1,092,548</b>	<b>\$409,705</b>	<b>\$1,502,253</b>

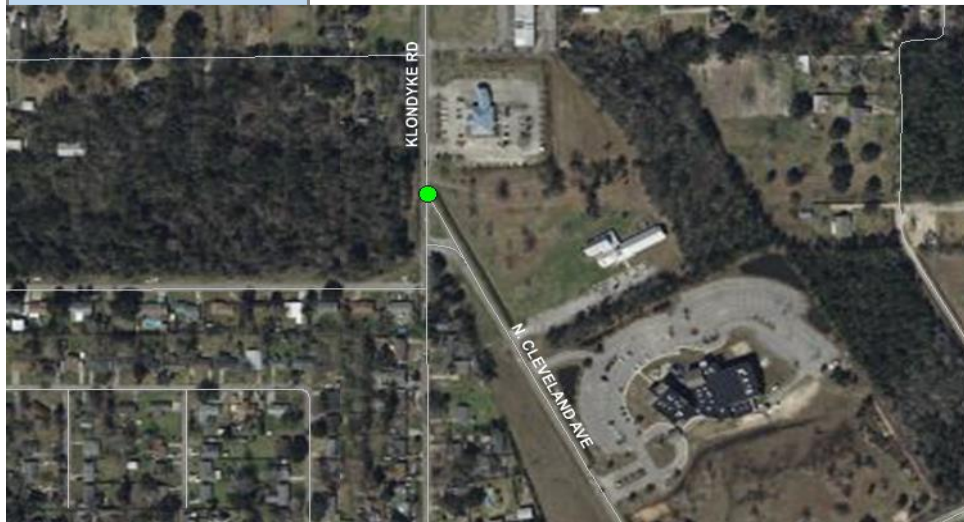
Project Notes					
Action	New Project	Date	8/8/2024	Type	Amend
Remarks	\$1,092,548 TMA-STBG				
Action		Date		Type	
Remarks					
Action		Date		Type	
Remarks					
Action		Date		Type	
Remarks					
Action		Date		Type	
Remarks					
Action		Date		Type	
Remarks					
Action		Date		Type	
Remarks					
*These projects are eligible for Special Match Credit if the LPA chooses to utilize					

# Mississippi Gulf Coast Metropolitan Planning Organization

## FY2025-2028 Transportation Improvement Program (TIP)



<b>County</b>	Harrison	<b>Agency</b>	Long Beach
<b>Improvement Type</b>	Intersection	<b>Route</b>	Klondyke Road
<b>Project Termini</b>	Cleveland Avenue		
<b>Project Number</b>			
<b>Project Description</b>	The project proposes replacing the existing abnormal alignment at Klondyke Road / Cleveland Avenue intersection with a roundabout intersection.		



FY	Source	Phase	Federal	Local/Match	Total
		PE	\$0	\$216,314	\$216,314
2028	TMA-STBG	CON	\$1,443,715	\$ 360,929	\$ 1,804,644
2028	TMA-CRP	CON	\$286,797	\$ 71,699	\$ 358,496
<b>Total Project Cost</b>			<b>\$1,730,512</b>	<b>\$648,942</b>	<b>\$2,379,454</b>

Project Notes					
Action	New Project	Date	8/8/2024	Type	Amend
Remarks	1442715 TMA-STBG, 286797 TMA-CRP				
Action		Date		Type	
Remarks					
Action		Date		Type	
Remarks					
Action		Date		Type	
Remarks					
Action		Date		Type	
Remarks					
Action		Date		Type	
Remarks					
*These projects are eligible for Special Match Credit if the LPA chooses to utilize					

# **Jackson County**

# Mississippi Gulf Coast Metropolitan Planning Organization

## FY2025-2028 Transportation Improvement Program (TIP)



<b>County</b>	Jackson	<b>Agency</b>	Moss Point
<b>Improvement Type</b>	Intersection	<b>Route</b>	I-10 Frontage
<b>Project Termini</b>	MS 613 and MS 63		
<b>Project Description</b>	I-10 Interstate Commerce District		



FY	Source	Phase	Federal	Local/Match	Total
		PE	\$0	\$562,500	\$562,500
		ROW	\$0	\$100,000	\$100,000
2028	HIP Earmark	CON	\$4,500,000	\$1,125,000	\$5,625,000
<b>Total Project Cost</b>			<b>\$4,500,000</b>	<b>\$1,787,500</b>	<b>\$6,287,500</b>

### Project Notes

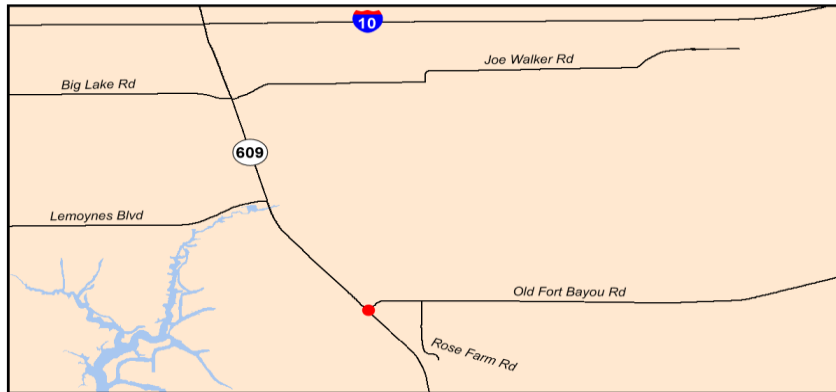
Action	Add to TIP	Date	7/12/2021	Type	Mod
Remarks	New project				
Action	Funding Source	Date	12/8/2022	Type	Amend
Remarks	Add funding source HIP Earmark				
Action		Date		Type	
Remarks					
Action		Date		Type	
Remarks					
Action		Date		Type	
Remarks					
Action		Date		Type	
Remarks					

\*These projects are eligible for Special Match Credit if the LPA chooses to utilize

# Mississippi Gulf Coast Metropolitan Planning Organization FY2025-2028 Transportation Improvement Program (TIP)



<b>County</b>	Jackson	<b>Agency</b>	Jackson County
<b>Improvement Type</b>	Intersection	<b>Route</b>	Hwy 609
<b>Project Termini</b>	Hwy 609 and Old Fort Bayou Road		
<b>Project Number</b>			
<b>Project Description</b>	Intersection realignment to alleviate congestion and improve safety. Project includes median, striping, turning lanes, pedestrian crossing and signalization.		



Project Notes					
Action	Add to TIP	Date	8/25/2016	Type	Amend
Remarks	\$1,493,640 STP				
Action	Change Year	Date	9/25/2014	Type	Mod
Remarks	Move from FY17 to FY18				
Action	Change Year	Date	12/10/2015	Type	Mod
Remarks	Move from FY18 to FY19				
Action	Change Year	Date	2/23/2017	Type	Mod
Remarks	Move from FY19 to FY20				
Action	Change Year	Date	10/3/2019	Type	Mod
Remarks	Move from FY20 to FY21				
Action	Add HIP funding	Date	10/31/2021	Type	Amend
Remarks	Add \$750,000 HIP funds				
Action	Swap funds	Date	6/26/2023	Type	Mod
Remarks	Swap \$750,000 HIP to TMA-STBG				
Action		Date		Type	
Remarks					
Action		Date		Type	
Remarks					
*These projects are eligible for Special Match Credit if the LPA chooses to utilize					

FY	Source	Phase	Federal	Local/Match	Total
		PE	\$0	\$280,455	\$280,455
		ROW	\$0	\$50,000	\$50,000
2026	TMA-STBG	CON	\$2,243,640	\$560,910	\$2,804,550
<b>Total Project Cost</b>			<b>\$2,243,640</b>	<b>\$891,365</b>	<b>\$3,135,005</b>

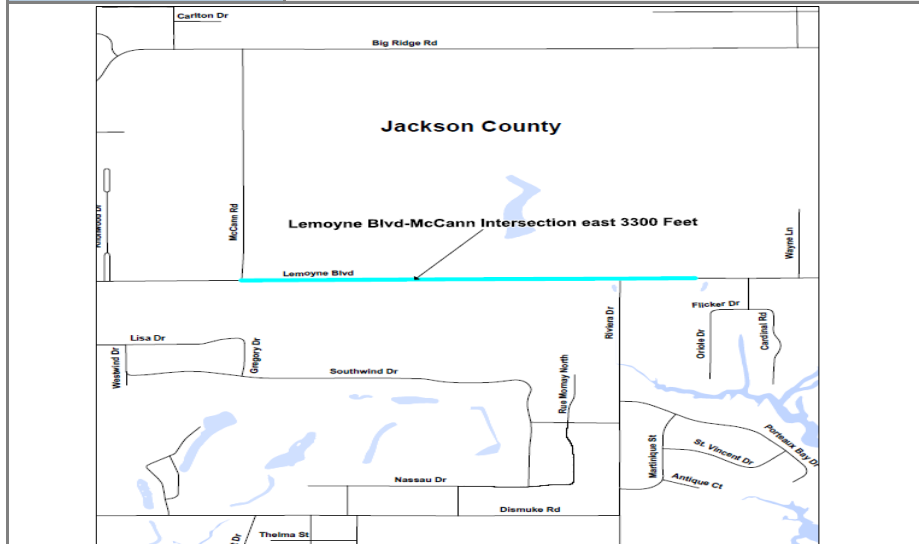


# Mississippi Gulf Coast Metropolitan Planning Organization

## FY2025-2028 Transportation Improvement Program (TIP)



<b>County</b>	Jackson	<b>Agency</b>	Jackson County
<b>Improvement Type</b>	Bike/Ped	<b>Route</b>	Lemoyne Boulevard
<b>Project Termini</b>	McCann Road to 3300 feet to the east		
<b>Project Number</b>			
<b>Project Description</b>	New sidewalks from new signalized intersection. Project Length: .64 mile		



FY	Source	Phase	Federal	Match	Total
		PE	\$0	\$50,980	\$50,980
2025	TMA-STBG	CON	\$407,845	\$101,961	\$509,806
<b>Total Project Cost</b>			<b>\$407,845</b>	<b>\$152,941</b>	<b>\$560,786</b>

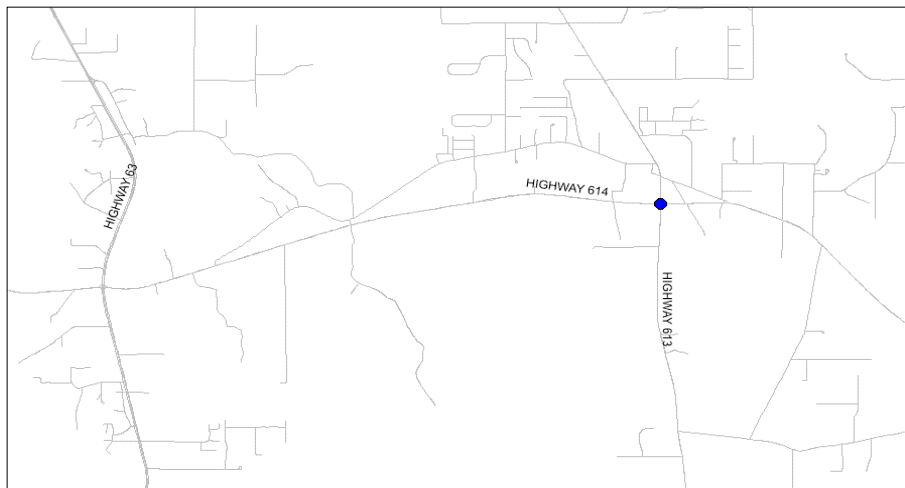
Project Notes					
Action	Add to TIP	Date	8/1/2020	Type	Amend
Remarks	\$262,151				
Action	Increase funding	Date	9/1/2023	Type	Amend
Remarks	Add \$145,694 STBG TMA - \$262,151 to \$407,845				
Action		Date		Type	
Remarks					
Action		Date		Type	
Remarks					
Action		Date		Type	
Remarks					
Action		Date		Type	
Remarks					
Action		Date		Type	
Remarks					
*These projects are eligible for Special Match Credit if the LPA chooses to utilize					

# Mississippi Gulf Coast Metropolitan Planning Organization

## FY2025-2028 Transportation Improvement Program (TIP)



<b>County</b>	Jackson County	<b>Agency</b>	Jackson County
<b>Improvement Type</b>	Intersection	<b>Route</b>	Hwy 613
<b>Project Termini</b>	Hwy 614		
<b>Project Description</b>	A roundabout will be constructed to ease traffic congestion at this major intersection of the growing East Central County area.		



FY	Source	Phase	Federal	Local/Match	Total
		PE	\$0	\$75,000	\$75,000
2025	TMA-STBG	CON	\$600,000	\$150,000	\$750,000
<b>Total Project Cost</b>			<b>\$600,000</b>	<b>\$225,000</b>	<b>\$825,000</b>

### Project Notes

Action	Add to TIP	Date	8/4/2022	Type	Amend
Remarks	\$600,000				
Action	Funding source	Date	1/29/2024	Type	Mod
Remarks	Change source from Non-urban to TMA-STBG				
Action		Date		Type	
Remarks					
Action		Date		Type	
Remarks					
Action		Date		Type	
Remarks					
Action		Date		Type	
Remarks					
Action		Date		Type	
Remarks					

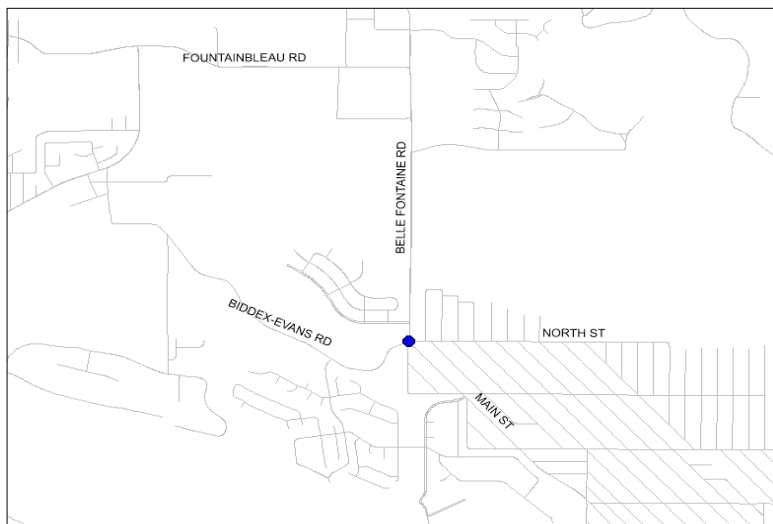
\*These projects are eligible for Special Match Credit if the LPA chooses to utilize

# Mississippi Gulf Coast Metropolitan Planning Organization

## FY2025-2028 Transportation Improvement Program (TIP)



<b>County</b>	Jackson County	<b>Agency</b>	Jackson County
<b>Improvement Type</b>	Intersection	<b>Route</b>	Biddix Evans Road
<b>Project Termini</b>	Main Street		
<b>Project Number</b>			
<b>Project Description</b>	This project will redesign the congested and dangerous 5 legged intersection		



FY	Source	Phase	Federal	Local/Match	Total
		PE	\$0	\$150,000	\$150,000
		ROW	\$0	\$100,000	\$100,000
2027	TMA-STBG	CON	\$1,200,000	\$300,000	\$1,500,000
<b>Total Project Cost</b>			<b>\$1,200,000</b>	<b>\$550,000</b>	<b>\$1,750,000</b>

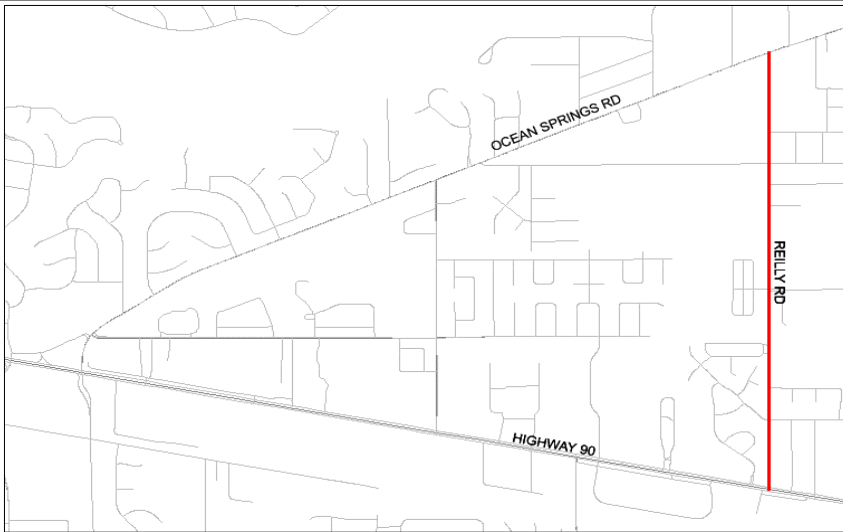
Project Notes					
Action	Add to TIP	Date	8/4/2022	Type	Amend
Remarks	\$1,200,000				
Action		Date		Type	
Remarks					
Action		Date		Type	
Remarks					
Action		Date		Type	
Remarks					
Action		Date		Type	
Remarks					
Action		Date		Type	
Remarks					
Action		Date		Type	
Remarks					
*These projects are eligible for Special Match Credit if the LPA chooses to utilize					

# Mississippi Gulf Coast Metropolitan Planning Organization

9



<b>County</b>	Jackson County	<b>Agency</b>	Ocean Springs
<b>Improvement Type</b>	Multimodal	<b>Route</b>	Reily Road
<b>Project Termini</b>	Ocean Springs Road to US 90		
<b>Project Number</b>			
<b>Project Description</b>	Widening the roadway to compliant travel lanes and adding a combination of sidewalks and multi-use pathways.		



FY	Source	Phase	Federal	Local/Match	Total
		PE	\$0	\$574,606	\$574,606
		ROW	\$0	\$100,000	\$100,000
2026	TMA-STBG	CON	\$3,346,854	\$836,714	\$4,183,568
2026	HIP THUD	CON	\$1,250,000	\$312,500	\$1,562,500
<b>Total Project Cost</b>			<b>\$4,596,854</b>	<b>\$1,823,820</b>	<b>\$6,420,674</b>

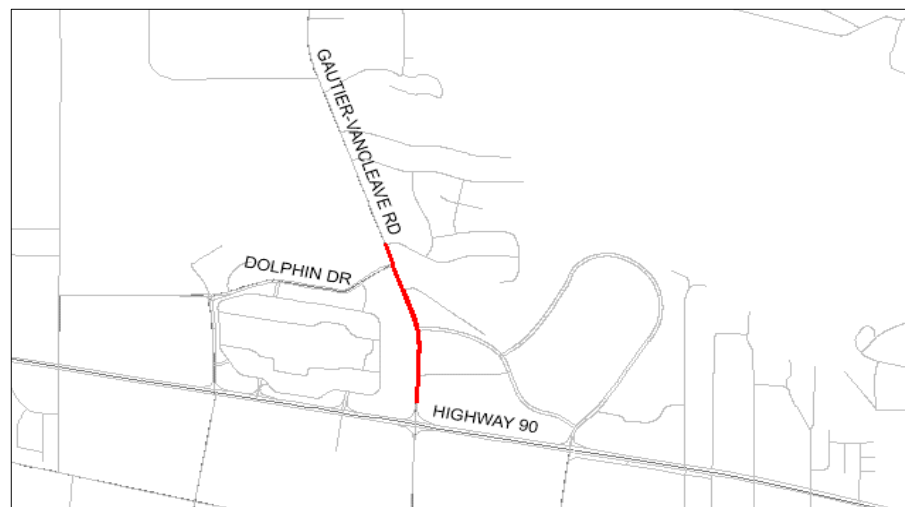
Project Notes					
Action	Add to TIP	Date	8/4/2022	Type	Amend
Remarks	\$934,054				
Action	Change funding	Date	6/29/2023	Type	Mod
Remarks	Swap HIP funding for TMA-STBG funding - \$177,681				
Action	Add PE	Date	10/6/2023	Type	Mod
Remarks	Add PE funding				
Action	Change FY	Date	10/6/2023	Type	Mod
Remarks	Move from Illustrative to FY 2026				
Action	Increase cost	Date	8/8/2024	Type	Amend
Remarks	2412800 TMA STBG				
Action	Add funds	Date	8/8/2024	Type	Amend
Remarks	1250000 HIP THUD				
Action		Date		Type	
Remarks					
Action		Date		Type	
Remarks					
Action		Date		Type	
Remarks					
*These projects are eligible for Special Match Credit if the LPA chooses to utilize					

# Mississippi Gulf Coast Metropolitan Planning Organization

## FY2025-2028 Transportation Improvement Program (TIP)



<b>County</b>	Jackson County	<b>Agency</b>	Gautier
<b>Improvement Type</b>	Bike/Ped	<b>Route</b>	Gautier-Vancleave Road
<b>Project Termini</b>	Valleywood to US 90		
<b>Project Number</b>			
<b>Project Description</b>	Sidewalks to fill gap		



FY	Source	Phase	Federal	Local/Match	Total
		PE	\$0	\$26,895	\$26,895
2026	Non Urb	CON	\$215,160	\$53,790	\$268,950
<b>Total Project Cost</b>			<b>\$215,160</b>	<b>\$80,685</b>	<b>\$295,845</b>

### Project Notes

<b>Action</b>	Add to TIP	<b>Date</b>	8/4/2022	<b>Type</b>	Amend
<b>Remarks</b>	\$215,160				
<b>Action</b>		<b>Date</b>		<b>Type</b>	
<b>Remarks</b>					
<b>Action</b>		<b>Date</b>		<b>Type</b>	
<b>Remarks</b>					
<b>Action</b>		<b>Date</b>		<b>Type</b>	
<b>Remarks</b>					
<b>Action</b>		<b>Date</b>		<b>Type</b>	
<b>Remarks</b>					
<b>Action</b>		<b>Date</b>		<b>Type</b>	
<b>Remarks</b>					
<b>Action</b>		<b>Date</b>		<b>Type</b>	
<b>Remarks</b>					

\*These projects are eligible for Special Match Credit if the LPA chooses to utilize

# Mississippi Gulf Coast Metropolitan Planning Organization

## FY2025-2028 Transportation Improvement Program (TIP)



<b>County</b>	Jackson County	<b>Agency</b>	Gautier
<b>Improvement Type</b>	Intersection	<b>Route</b>	Dolphin Drive
<b>Project Termini</b>	CSX RR		
<b>Project Number</b>			
<b>Project Description</b>	Dolphin Drive two-lane bridge over CSX Railroad- Old Spanish Trail will have to be raised to accommodate the height of the bridge, and its use will be affected; however, the citizens of Gautier have other alternatives for access during construction; especially with the extension of Guillotteville Road, which would be constructed prior to the grade separated crossing for traffic control.		



### Project Notes

<b>Action</b>	Add to TIP	<b>Date</b>	12/8/2022	<b>Type</b>	Amend
<b>Remarks</b>	No funding - App for RR Crossing Elimination Program				
<b>Action</b>		<b>Date</b>		<b>Type</b>	
<b>Remarks</b>					
<b>Action</b>		<b>Date</b>		<b>Type</b>	
<b>Remarks</b>					
<b>Action</b>		<b>Date</b>		<b>Type</b>	
<b>Remarks</b>					
<b>Action</b>		<b>Date</b>		<b>Type</b>	
<b>Remarks</b>					
<b>Action</b>		<b>Date</b>		<b>Type</b>	
<b>Remarks</b>					

FY	Source	Phase	Federal	Local/Match	Total
illustrative	Unfunded	PE	\$0	\$700,000	\$700,000
illustrative	Unfunded	ENV	\$0	\$700,000	\$700,000
illustrative	Unfunded	CON	\$0	\$13,800,000	\$13,800,000
<b>Total Project Cost</b>			<b>\$0</b>	<b>\$15,200,000</b>	<b>\$15,200,000</b>

\*These projects are eligible for Special Match Credit if the LPA chooses to utilize

# Mississippi Gulf Coast Metropolitan Planning Organization

## FY2025-2028 Transportation Improvement Program (TIP)



<b>County</b>	Jackson County	<b>Agency</b>	Moss Point
<b>Improvement Type</b>	Intersection	<b>Route</b>	Dantzler Street
<b>Project Termini</b>	Main Street		
<b>Project Number</b>			
<b>Project Description</b>	This project will realign Dantzler Street to enhance access to the Moss Point Welcome Center. The current offset driveway will be removed and replaced with parking. Parking spaces will be added at the realigned intersection as well as crosswalk improvements for pedestrians.		



FY	Source	Phase	Federal	Local/Match	Total
		PE	\$0	\$32,500	\$32,500
		ROW	\$0	\$50,000	\$50,000
2025	Non-Urb	CON	\$260,000	\$65,000	\$325,000
<b>Total Project Cost</b>			<b>\$260,000</b>	<b>\$147,500</b>	<b>\$407,500</b>

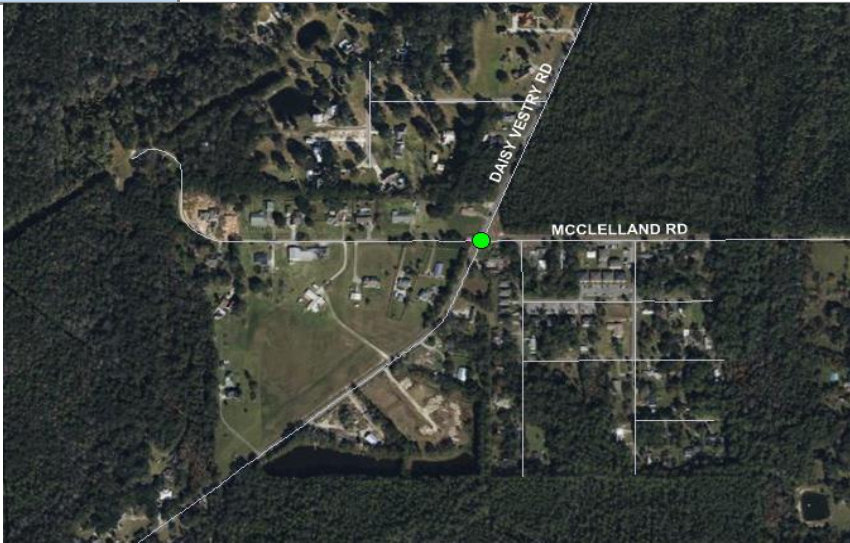
Project Notes					
Action	Add to TIP	Date	12/8/2022	Type	Amend
Remarks	\$260,000 Non-Urban STBG				
Action		Date		Type	
Remarks					
Action		Date		Type	
Remarks					
Action		Date		Type	
Remarks					
Action		Date		Type	
Remarks					
Action		Date		Type	
Remarks					
Action		Date		Type	
Remarks					
*These projects are eligible for Special Match Credit if the LPA chooses to utilize					

# Mississippi Gulf Coast Metropolitan Planning Organization

## FY2025-2028 Transportation Improvement Program (TIP)



<b>County</b>	Jackson County	<b>Agency</b>	Jackson County
<b>Improvement Type</b>	Intersection	<b>Route</b>	Daisy Vestry Rd
<b>Project Termini</b>	McClelland Rd		
<b>Project Number</b>			
<b>Project Description</b>	This intersection improvement project will provide a safer intersection with the addition of a new left turn lane and two right turn through lanes.		



FY	Source	Phase	Federal	Local/Match	Total
		PE	\$0	\$117,942	\$117,942
		ROW	\$0	\$50,000	\$50,000
2028	TMA-CRP	CON	\$943,536	\$235,884	\$1,179,420
<b>Total Project Cost</b>			<b>\$943,536</b>	<b>\$403,826</b>	<b>\$1,347,362</b>

Project Notes					
Action	Add to TIP	Date	8/8/2024	Type	Amend
Remarks	\$943,536				
Action		Date		Type	
Remarks					
Action		Date		Type	
Remarks					
Action		Date		Type	
Remarks					
Action		Date		Type	
Remarks					
Action		Date		Type	
Remarks					
Action		Date		Type	
Remarks					
*These projects are eligible for Special Match Credit if the LPA chooses to utilize					





# Mississippi Gulf Coast Metropolitan Planning Organization

## FY2025-2028 Transportation Improvement Program (TIP)



<b>County</b>	Jackson County	<b>Agency</b>	Ocean Springs
<b>Improvement Type</b>	Intersection	<b>Route</b>	US 90
<b>Project Termini</b>	MLK Jr Ave & Washington Ave		
<b>Project Number</b>			
<b>Project Description</b>	This project will support intersection improvements on Highway 90 at Washington Avenue and at MLK/Vermont. The concepts were created through a previous TIP-funded study at these location. Improvements will include crosswalks, modified timing for traffic lights, modifications to the lane configurations and patterns, and installation of channelized medians along the adjacent frontage roads.		



FY	Source	Phase	Federal	Local/Match	Total
		PE	\$0	\$97,100	\$97,100
2028	TMA-STBG	CON	\$696,800	\$174,200	\$871,000
<b>Total Project Cost</b>			<b>\$696,800</b>	<b>\$271,300</b>	<b>\$968,100</b>

Project Notes					
Action	Add to TIP	Date	8/8/2024	Type	Amend
Remarks	\$696,800				
Action		Date		Type	
Remarks					
Action		Date		Type	
Remarks					
Action		Date		Type	
Remarks					
Action		Date		Type	
Remarks					
Action		Date		Type	
Remarks					
*These projects are eligible for Special Match Credit if the LPA chooses to utilize					

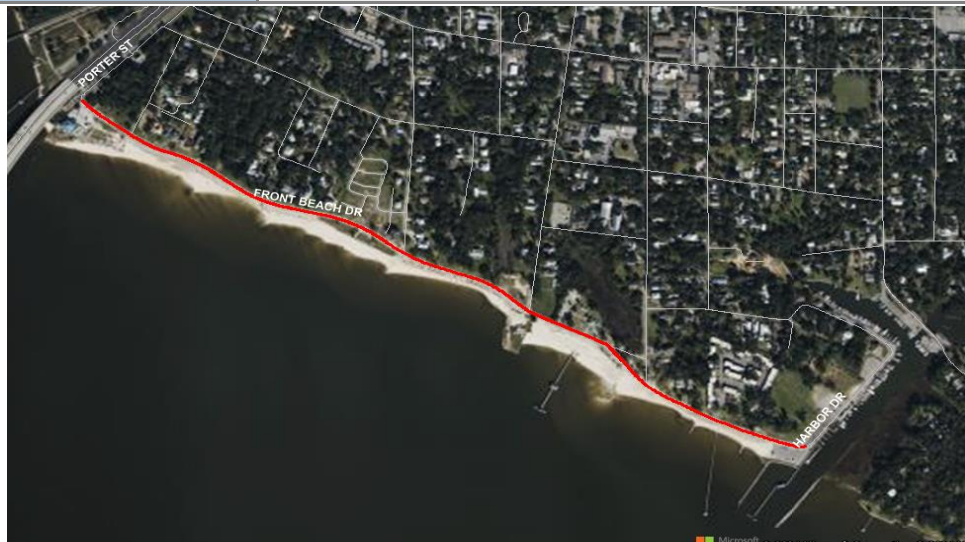


# Mississippi Gulf Coast Metropolitan Planning Organization

## FY2025-2028 Transportation Improvement Program (TIP)



<b>County</b>	Jackson County	<b>Agency</b>	Ocean Springs
<b>Improvement Type</b>	Multimodal	<b>Route</b>	Front Beach Drive
<b>Project Termini</b>	Porter Avenue to Harbor Road		
<b>Project Number</b>			
<b>Project Description</b>	The project will underseal through injection of a cementitious material beneath the existing concrete seawall to fill any voids that may have arisen over time.		



FY	Source	Phase	Federal	Local/Match	Total
		PE	\$0	\$50,000	\$50,000
III	N/A	CON	\$0	\$7,200,000	\$7,200,000
<b>Total Project Cost</b>			<b>\$0</b>	<b>\$7,250,000</b>	<b>\$7,250,000</b>

### Project Notes

Action	Add to TIP	Date	8/8/2024	Type	Amend
Remarks	Unfunded				
Action		Date		Type	
Remarks					
Action		Date		Type	
Remarks					
Action		Date		Type	
Remarks					
Action		Date		Type	
Remarks					
Action		Date		Type	
Remarks					

\*These projects are eligible for Special Match Credit if the LPA chooses to utilize



# Mississippi Gulf Coast Metropolitan Planning Organization

## FY2025-2028 Transportation Improvement Program (TIP)

### Safety Group

#### Group Description

The Safety Group is used to fund projects in the MPO’s Safety Program. Gulf Regional Planning Commission serving as staff for the MPO provides planning work described in its Unified Planning Work Program (UPWP) that is used to identify projects to be developed and funded with the Safety Group. The Mississippi Gulf Coast MPO will set aside \$500,000 of its annual allocation of STBG funds for projects to enhance the safe mobility of all modes of transportation on the Mississippi Gulf Coast. GRPC works with FHWA to develop projects that will be eligible for the Federal share payable to amount to 100 percent of the cost of construction of such projects as described in 23 U.S.C. 120 (c) and 23 CFR 652.9. Projects will be selected by GRPC for funding through this program, coordinated with the applicable local public agency and initiated as needed without the requirement of a TIP amendment.

Agency	Project Description	Source	Scope	Date added	Fed. Funds
CTA	Traffic Signal Priority - Various intersections in Gulfport and Biloxi	TMA-STBG	Intersection	7/20/2017	\$500,000
GRPC	Safety Projects PH II -- Jackson County	TMA-STBG	Safety		\$550,000
GRPC	Safety Projects PH II -- Harrison County	TMA-STBG	Safety		\$550,000
GRPC	Safety Projects PH II -- Hancock County	TMA-STBG	Safety		\$0

*\*These projects are eligible for Special Match Credit if the LPA chooses to utilize*



# Mississippi Gulf Coast Metropolitan Planning Organization

## FY2025-2028 Transportation Improvement Program (TIP)

### Studies/Projects Group

Project “Scoping” is the phase in the Project Development process that moves a recognized problem from an idea through the development of alternatives and environmental screening.

Agency	Project Description	Phase	Funding	Date added	Federal Funds
Bay St. Louis	Multiuse Pathway Study	Scoping	TMA - STBG	8/23/2018	\$8,000
Gulfport	Pavement Management	Scoping	TMA - STBG	12/5/2019	\$80,000
Bay St. Louis	City ADA Improvements	Scoping	TMA - STBG	12/5/2019	\$50,000
Long Beach	Beatline Parkway	ENV	TMA - STBG	12/5/2019	\$150,000
			HIP Congressional Earmark	12/8/2022	\$150,000
GRPC	Airport Connector Feasibility Study	Scoping	TMA - STBG	12/8/2022	\$80,000
GRPC	Moss Point Interstate Interchange Study	Scoping	HB 1413	3/9/2023	\$300,000
D'Iberville	Rodriguez Street / I-110 Traffic Study	Scoping	TMA - STBG	3/9/2023	\$78,400
Pascagoula	14th Street Road Diet	Scoping	Non-Urban STBG	11/2/2023	\$39,920
Jackson County	Slider Road	Scoping	TMA - STBG	12/11/2023	\$30,400
Jackson County	Ocean Springs Middle School	Scoping	TMA - STBG	12/11/2023	\$36,000



## Mississippi Gulf Coast Metropolitan Planning Organization FY2025-2028 Transportation Improvement Program (TIP)

### Transportation Alternatives (TA) Group

The Transportation Alternatives (TA) Set-Aside from the Surface Transportation Block Grant (STBG) Program provides funding for a variety of generally smaller-scale transportation projects such as pedestrian and bicycle facilities.

Agency	Project Description	Date added	Fed. Funds
Diamondhead	Monjoy Creek Pathway - Diamonhead Drive to Rotten Bayou	TA 8/23/2019	\$80,000
Hancock County	Washington Street ADA Beach Access	TA 8/23/2019	\$590,000
Gulfport	Old Hwy 49 Sidewalks - Robinson Road to Dedeaux Road	TA 8/23/2019	\$160,000
Gulfport	Old Hwy 49 Sidewalks - Robinson Road to Dedeaux Road	TA 8/8/2024	\$160,000
Bay St Louis	Beyer Street - Carroll Avenue to Ranch Street	TA 8/23/2019	\$280,000
Bay St Louis	Beyer Street - Carroll Avenue to Ranch Street	TMA-STBG 4/19/2024	\$116,240
Waveland	St. Joseph Street Herlihy Street and Old Spanish Trail	TA 10/22/2020	\$500,000
Waveland	St. Joseph Street Herlihy Street and Old Spanish Trail	TMA-STBG 12/5/2023	\$100,000
Diamondhead	East Aloha Drive PH II Veterans Drive and Kalani Drive	TA 10/22/2020	\$489,866
Diamondhead	East Aloha Drive PH II Veterans Drive and Kalani Drive	TMA-STBG 8/8/2024	\$339,680
Diberville	Lamey Bridge Road - School to Diberville Blvd, Lemoyne Gorenflo	TA 8/4/2022	\$558,400
Bay St Louis	Felicity Street, Seube Street, Pine Street, and Ranch Street	TA 8/4/2022	\$1,288,803
Bay St Louis	Felicity Street, Seube Street, Pine Street, and Ranch Street	TA 8/8/2024	\$581,371
Hancock County	Texas Flat Road - McLoed Park to School - Santa Rosa Pathway	TA 8/4/2022	\$755,565
Gulfport	Seaway Road - Three Rivers Road to .9 mile East	TA 8/8/2024	\$800,000
Jackson County	Walker Road - Rose Farm to Jackson Lee	TA 8/8/2024	\$408,377

#### MDOT allocations

Gautier	Martin Bluff Road - Roys Road to Little Bend Place	Sidewalks	7/22/2020	\$646,000
MGCCC	Harrison County Campus	Sidewalks	7/22/2020	\$244,356
MGCCC	Campus Pedestrian Connection Plaza	Ped	12/13/2021	\$305,446
Diberville	Lamey Bridge Road Middle School Pedestrian Improvements	Sidewalks	5/26/2022	\$402,570

*\*These projects are eligible for Special Match Credit if the LPA chooses to utilize*







# Mississippi Gulf Coast Metropolitan Planning Organization

## FY2025-2028 Transportation Improvement Program (TIP)

### Federal Transit Administration (FTA) Program of Projects (POP)

#### Coast Transit Authority FY2025 TIP

FY	Project	Fund Source	FTA	CTA	Total
2025	Operating Assistance For Period	Sec 5307	\$4,620,000	\$4,620,000	\$9,240,000
2025	Preventive Maintenance	Sec 5307, 5310	\$3,968,000	\$992,000	\$4,960,000
2025	Short Range Planning	Sec 5307	\$120,000	\$30,000	\$150,000
2025	Computer Equipment	Sec 5307	\$80,000	\$20,000	\$100,000
2025	Shop Equipment	Sec 5307	\$80,000	\$20,000	\$100,000
2025	ADA Operating Expense	Sec 5307	\$552,000	\$138,000	\$690,000
2025	Transit Enhancements	Sec 5307	\$96,000	\$24,000	\$120,000
2025	Purchase Office Equipment	Sec 5307	\$24,000	\$6,000	\$30,000
2025	Purchase Communication Equipment	Sec 5307	\$80,000	\$20,000	\$100,000
2025	Purchase Revenue Vehicles	Sec 5339 a/b/c	\$1,760,000	\$440,000	\$2,200,000
2025	Purchase Support Vehicles	Sec 5307, 5339a	\$184,000	\$46,000	\$230,000
2025	JARC Purchased Transportation	Sec 5307	\$400,000	\$0	\$400,000
2025	Mobility Manager	Sec 5307	\$64,000	\$16,000	\$80,000
2025	CTA-MHG Gulfport Intermodal Facility	RAISE	\$19,170,278	\$4,792,570	\$23,962,848
<b>Totals</b>			<b>\$31,198,278</b>	<b>\$11,164,570</b>	<b>\$42,362,848</b>



# Mississippi Gulf Coast Metropolitan Planning Organization

## FY2025-2028 Transportation Improvement Program (TIP)

### Federal Transit Administration (FTA) Program of Projects (POP)

#### Coast Transit Authority FY2026 TIP

FY	Project	Fund Source	FTA	CTA	Total
2026	Operating Assistance For Period	Sec 5307	\$4,850,000	\$4,850,000	\$9,700,000
2026	Preventive Maintenance	Sec 5307, 5310	\$4,160,000	\$1,040,000	\$5,200,000
2026	Short Range Planning	Sec 5307	\$160,000	\$40,000	\$200,000
2026	Computer Equipment	Sec 5307	\$80,000	\$20,000	\$100,000
2026	Shop Equipment	Sec 5307	\$80,000	\$20,000	\$100,000
2026	ADA Operating Expense	Sec 5307	\$580,000	\$145,000	\$725,000
2026	Transit Enhancements	Sec 5307	\$120,000	\$30,000	\$150,000
2026	Purchase Office Equipment	Sec 5307	\$32,000	\$8,000	\$40,000
2026	Purchase Communication Equipment	Sec 5307	\$80,000	\$20,000	\$100,000
2026	Purchase Revenue Vehicles	Sec 5339 a/b/c	\$1,840,000	\$460,000	\$2,300,000
2026	Purchase Support Vehicles	Sec 5307,5339a	\$184,000	\$46,000	\$230,000
2026	JARC Purchased Transportation	Sec 5307	\$430,000	\$0	\$430,000
2026	Mobility Manager	Sec 5307	\$68,000	\$17,000	\$85,000
<b>Totals</b>			<b>\$12,664,000</b>	<b>\$6,696,000</b>	<b>\$19,360,000</b>



# Mississippi Gulf Coast Metropolitan Planning Organization

## FY2025-2028 Transportation Improvement Program (TIP)

### Federal Transit Administration (FTA) Program of Projects (POP)

#### Coast Transit Authority FY2027 TIP

FY	Project	Fund Source	FTA	CTA	Total
2027	Operating Assistance For Period	Sec 5307	\$5,050,000	\$5,050,000	\$10,100,000
2027	Preventive Maintenance	Sec 5307, 5310	\$4,320,000	\$1,080,000	\$5,400,000
2027	Short Range Planning	Sec 5307	\$160,000	\$40,000	\$200,000
2027	Computer Equipment	Sec 5307	\$80,000	\$20,000	\$100,000
2027	Shop Equipment	Sec 5307	\$80,000	\$20,000	\$100,000
2027	ADA Operating Expense	Sec 5307	\$608,000	\$152,000	\$760,000
2027	Transit Enhancements	Sec 5307	\$120,000	\$30,000	\$150,000
2027	Purchase Office Equipment	Sec 5307	\$40,000	\$10,000	\$50,000
2027	Purchase Communication Equipment	Sec 5307	\$80,000	\$20,000	\$100,000
2027	Purchase Revenue Vehicles	Sec 5339 a/b/c	\$1,840,000	\$460,000	\$2,300,000
2027	Purchase Support Vehicles	Sec 5339a	\$184,000	\$46,000	\$230,000
2027	JARC Purchased Transportation	Sec 5307	\$450,000	\$0	\$450,000
2027	Mobility Manager	Sec 5307	\$72,000	\$18,000	\$90,000
<b>Totals</b>			<b>\$13,084,000</b>	<b>\$6,946,000</b>	<b>\$20,030,000</b>



# Mississippi Gulf Coast Metropolitan Planning Organization

## FY2025-2028 Transportation Improvement Program (TIP)

### Federal Transit Administration (FTA) Program of Projects (POP)

#### Coast Transit Authority FY2028 TIP

FY	Project	Fund Source	FTA	CTA	Total
2028	Operating Assistance For Period	Sec 5307	\$5,300,000	\$5,300,000	\$10,600,000
2028	Preventive Maintenance	Sec 5307, 5310	\$4,480,000	\$1,120,000	\$5,600,000
2028	Short Range Planning	Sec 5307	\$160,000	\$40,000	\$200,000
2028	Computer Equipment	Sec 5307	\$80,000	\$20,000	\$100,000
2028	Shop Equipment	Sec 5307	\$80,000	\$20,000	\$100,000
2028	ADA Operating Expense	Sec 5307	\$640,000	\$160,000	\$800,000
2028	Transit Enhancements	Sec 5307	\$120,000	\$30,000	\$150,000
2028	Purchase Office Equipment	Sec 5307	\$40,000	\$10,000	\$50,000
2028	Purchase Communication Equipment	Sec 5307	\$80,000	\$20,000	\$100,000
2028	Purchase Revenue Vehicles	Sec 5339 a/b/c	\$1,840,000	\$460,000	\$2,300,000
2028	Purchase Support Vehicles	Sec 5339a	\$184,000	\$46,000	\$230,000
2028	JARC Purchased Transportation	Sec 5307	\$470,000	\$0	\$470,000
2028	Mobility Manager	Sec 5307	\$76,000	\$19,000	\$95,000
<b>Totals</b>			<b>\$13,550,000</b>	<b>\$7,245,000</b>	<b>\$20,795,000</b>













FY2024-FY2027 Transportation Improvement Program Mid-Year Update

Federal Highway Administration
Eastern Federal Lands Highway Division

Last Printed: 6/3/2024

Table with 14 columns: PROJECT, PROGRAM FISCAL YEAR, STATE, COUNTY, PARK, REFUGE, FOREST OR OTHER PARTNER/AGENCY, DESCRIPTION, TYPE OF WORK, PRIMARY FUND SOURCE, TOTAL PROGRAMMED AMOUNT, FUNDS FROM TITLE, DELIVERED BY, STATUS, CONGRESSIONAL DISTRICT, FLMA REGION. Contains 33 rows of project data for Mississippi.

Approval signature is shown on first page packet only. The listing reflects all newly identified and programmed and/or modified projects as of May 31, 2024.



FY2024-FY2027 Transportation Improvement Program Mid-Year Update

Federal Highway Administration
Eastern Federal Lands Highway Division

Last Printed: 6/3/2024

Table with 14 columns: PROJECT, PROGRAM FISCAL YEAR, STATE, COUNTY, PARK, REFUGE, FOREST OR OTHER PARTNER/AGENCY, DESCRIPTION, TYPE OF WORK, PRIMARY FUND SOURCE, TOTAL PROGRAMMED AMOUNT, FUNDS FROM TITLE, DELIVERED BY, STATUS, CONGRESSIONAL DISTRICT, FLMA REGION. Contains 6 rows of project data for Natchez Trace Parkway.



**MISSISSIPPI DEPARTMENT OF TRANSPORTATION  
2025 - 2028 STATEWIDE TRANSPORTATION IMPROVEMENT PROGRAM  
GULF COAST URBANIZED AREA GROUPED PROJECTS**

**Bridge Replacement**

Fiscal Year	Agency	Fund Source	Federal Share	State Share	Total Funds
2025	MDOT/LPA	STBG/NHPP/EARMARK/SFP/LOCAL	\$16,000,000	\$4,000,000	\$20,000,000
2026	MDOT/LPA	STBG/NHPP/EARMARK/SFP/LOCAL	\$38,800,000	\$9,700,000	\$48,500,000
2027	MDOT/LPA	STBG/NHPP/EARMARK/SFP/LOCAL	\$38,800,000	\$9,700,000	\$48,500,000
2028	MDOT/LPA	STBG/NHPP/EARMARK/SFP/LOCAL	\$38,800,000	\$9,700,000	\$48,500,000
<b>SUB-TOTAL FOR Bridge Replacement :</b>			<b>\$132,400,000</b>	<b>\$33,100,000</b>	<b>\$165,500,000</b>

**Operation/Maintenance/Minor Reconstruction**

Fiscal Year	Agency	Fund Source	Federal Share	State Share	Total Funds
2025	MDOT/LPA	HSIP/NHPP/STBG/SFP/LOCAL	\$40,000,000	\$10,000,000	\$50,000,000
2026	MDOT/LPA	HSIP/NHPP/STBG/SFP/LOCAL	\$7,200,000	\$1,800,000	\$9,000,000
2027	MDOT/LPA	HSIP/NHPP/STBG/SFP/LOCAL	\$7,200,000	\$1,800,000	\$9,000,000
2028	MDOT/LPA	HSIP/NHPP/STBG/SFP/LOCAL	\$7,200,000	\$1,800,000	\$9,000,000
<b>SUB-TOTAL FOR Operation/Maintenance/Minor Reconstruction :</b>			<b>\$61,600,000</b>	<b>\$15,400,000</b>	<b>\$77,000,000</b>

**Safety**

Fiscal Year	Agency	Fund Source	Federal Share	State Share	Total Funds
2025	MDOT/LPA	HSIP/NHPP/STBG/SFP/LOCAL	\$1,000,000	\$111,111	\$1,111,111
2026	MDOT/LPA	HSIP/NHPP/STBG/SFP/LOCAL	\$1,000,000	\$111,111	\$1,111,111
2027	MDOT/LPA	HSIP/NHPP/STBG/SFP/LOCAL	\$1,000,000	\$111,111	\$1,111,111
2028	MDOT/LPA	HSIP/NHPP/STBG/SFP/LOCAL	\$1,000,000	\$111,111	\$1,111,111
<b>SUB-TOTAL FOR Safety :</b>			<b>\$4,000,000</b>	<b>\$444,444</b>	<b>\$4,444,444</b>

**TAP/TE/Recreational Trails/SRTS/Scenic Byways**

Fiscal Year	Agency	Fund Source	Federal Share	State Share	Total Funds
2025	MDOT/LPA	TAP/TE/STBG/SFP/EARMARK/LOCAL/Discretionary	\$1,000,000	\$250,000	\$1,250,000
2026	MDOT/LPA	TAP/TE/STBG/SFP/EARMARK/LOCAL/Discretionary	\$1,000,000	\$250,000	\$1,250,000
2027	MDOT/LPA	TAP/TE/STBG/SFP/EARMARK/LOCAL/Discretionary	\$1,000,000	\$250,000	\$1,250,000
2028	MDOT/LPA	TAP/TE/STBG/SFP/EARMARK/LOCAL/Discretionary	\$1,000,000	\$250,000	\$1,250,000
<b>SUB-TOTAL FOR TAP/TE/Recreational Trails/SRTS/Scenic Byways :</b>			<b>\$4,000,000</b>	<b>\$1,000,000</b>	<b>\$5,000,000</b>
<b>Grand Total :</b>			<b>\$202,000,000</b>	<b>\$49,944,444</b>	<b>\$251,944,444</b>

The projects contained in this "Grouped" list are not individually listed in the STIP. These projects individually or cumulatively have no significant environmental impact and therefore are deemed Categorical Exclusions. Additional grouped projects may be found in other volumes of the STIP.



**MISSISSIPPI DEPARTMENT OF TRANSPORTATION  
2025 - 2028 STATEWIDE TRANSPORTATION IMPROVEMENT PROGRAM  
MDOT ALL STIP PROJECTS**

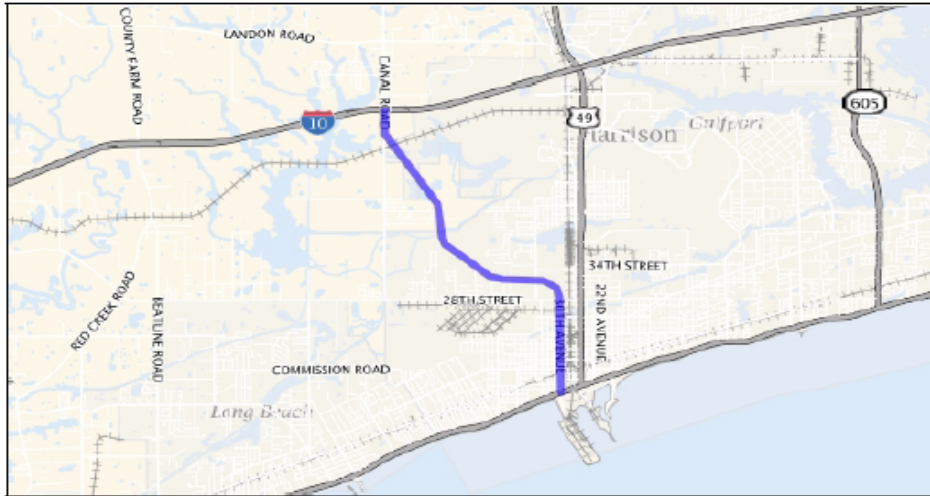
**County: Harrison**

**STIP ID: 240200**    **Project Title:** SR 601/CANAL ROAD HARRISON COUNTY - DEBT SERVICE    **Total Project Cost:** \$130,000,000

**Route:** MS 601/CANAL ROAD    **Project Length:** 5 Miles    **Fund Source:** STBG/NHPP/BOND/SFP

Project #	FY	Scope of Work	Resp Agcy	Phase	Fed	State/Local	Total Cost Est
501561/602000	2025	Grade Drain Bridge Pave	MDOT	OTH/AC	\$6,641,600	\$1,660,400	\$8,302,000
<b>Termini:</b> SR 601 (CANAL RD) BT PORT/I-10							
501561/602002	2025	Grade Drain Bridge Pave	MDOT	OTH/AC	\$2,168,664	\$542,166	\$2,710,830
<b>Termini:</b> H.E.L.P. Projects - Debt Service Harrison (B)							
501561/602000	2028	Grade Drain Bridge Pave	MDOT	OTH/AC	\$6,704,800	\$1,676,200	\$8,381,000
<b>Termini:</b> SR 601 (CANAL RD) BT PORT/I-10							
501561/602002	2026	Grade Drain Bridge Pave	MDOT	OTH/AC	\$2,168,664	\$542,166	\$2,710,830
<b>Termini:</b> H.E.L.P. Projects - Debt Service Harrison (B)							
501561/602002	2027	Grade Drain Bridge Pave	MDOT	OTH/AC	\$2,168,664	\$542,166	\$2,710,830
<b>Termini:</b> H.E.L.P. Projects - Debt Service Harrison (B)							
501561/602002	2028	Grade Drain Bridge Pave	MDOT	OTH/AC	\$2,168,664	\$542,166	\$2,710,830
<b>Termini:</b> H.E.L.P. Projects - Debt Service Harrison (B)							
<b>SUB-TOTAL FOR STIP ID 240200 :</b>					<b>\$22,021,056</b>	<b>\$5,505,264</b>	<b>\$27,526,320</b>

This project details the repayment of debt service on a \$102,000,000 HELP bond issue for the construction of Canal Road. This project uses Advance Construction. See the explanation in the Introduction for a description of this funding technique.



<b>SUB-TOTAL FOR Harrison COUNTY :</b>					<b>\$22,021,056</b>	<b>\$5,505,264</b>	<b>\$27,526,320</b>
--	--	--	--	--	---------------------	--------------------	---------------------

## APPENDIX

### MS Gulf Coast TIP: Updates, Amendments and Modifications Tracker

#### October 2013 Amendments/Modifications:

- Gulfport – Pass Road Traffic Signals/16 intersections - \$444,000 STP
- Jackson County – Hwy 609/Old Fort Bayou Rd - \$1,493,640 STP
- D'Iberville – Big Ridge Rd & D'Iberville Blvd/1-10, Dewey Lawrence, South - \$2,938,778 STP
- Jackson County – Lemoyne Blvd/Brittany Ave - \$308,000 STP
- Gulfport – Courthouse Rd/Pass Rd to US 90 - \$2,683,532 STP
- Bay St. Louis – Old Spanish Trail Lighting/Main St to City Limits - \$640,640 STP

#### Increase Funding (amendment)

- Biloxi - Popp's Ferry /Cedar Lake to D'Iberville Blvd - Add \$5,000,000 STP for a total of \$7,204,800 STP
- Pascagoula – Hospital Rd/Old Mobile Hwy to US 90 – Add \$1,798,817 STP for a total of \$2,293,217 STP
- Gautier – Martin Bluff Rd/Gautier-Vancleave Rd to Frontage Rd – Add \$2,392,005 STP for a total of \$3,328,005 STP

#### Remove Project (amendment)

- Pascagoula – Ingalls Ave/Chicot Rd. & Martin St. \$396,000 STP
- Harrison County – Hwy 605 Frontage Rd./Lorraine Rd to 2000' North - \$726,800 STP
- D'Iberville – Automall Pkwy & Rodriguez St./D'Iberville Blvd to I-110 - \$200,000 STP
- Gulfport – Seaway Rd Pedestrian Path/Three Rivers Rd to Lorraine Rd - \$788,304 STP

#### Modifications

- Biloxi - Popp's Ferry Rd/Cedar Lake Rd to D'Iberville Blvd – Move from FY 2013 to FY 2015
- Gulfport – 28<sup>th</sup> St/34<sup>th</sup> Ave to 23<sup>rd</sup> Ave – Move from FY 2012 to FY 2014
- Jackson County – Old Fort Bayou Rd/Yellow Jacket Rd - Move from FY 2014 to FY 2015
- Biloxi – Popp's Ferry Road Extension/Pass Road to US 90 – Move from FY 2012 to FY 2018
- Gulfport – Seaway Rd/Three Rivers Rd to 1 mile east – Move from FY 2013 to FY 2014
- Pascagoula – Hospital Rd/Old Mobile Hwy to US 90 – Move from FY 2015 to FY 2016
- Bay St Louis – Old Spanish Trl/City Limits to Main St – Move from FY 2013 to FY 2014
- Gautier – Martin Bluff Rd/Gautier-Vancleave Rd to Frontage Rd - Move from FY 2013 to FY 2016
- Gulfport - Deadeaux Rd/ Three Rivers rd to Hwy 605 – Move from FY 2013 to FY 2015
- Gulfport – Ship Island Terminal Project/ Bert Jones Yacht Basin – Move from FY 2013 to FY 2015
- Bay St. Louis – US 90 Pedestrian Path/BSL Bridge to Main St - Move from FY 2013 to FY 2015
- Ocean Springs – Government St/Hanley Rd to Hanshaw Rd - Move from FY 2013 to FY 2014
- D'Iberville – D'Iberville Blvd/Central Ave to Automall Pkwy - Move from FY 2013 to FY 2015
- Pass Christian – Cedar Ave/RR to US 90 - Move from FY 2015 to FY 2018

- Biloxi – Reynoir St and Jackson St/Downtown Biloxi – Move from FY 2014 to FY 2015
- Harrison County – Biloxi River Bridge/Lorraine Rd – Move from FY 2013 to FY 2014
- Gautier – Hwy 57/Brown Rd - Move from FY 2013 to FY 2015
- Moss Point – Main St/South to Jefferson - Move from FY 2013 to FY 2015
- Moss Point – Second St/East Moss Point - Move from FY 2014 to FY 2015

**March 2014 Amendments/Modifications:**

- Ocean Springs – Porter Ave/Martin Avenue to Howard Ave – Move from FY 2013 to FY 2018
- Gulfport – Deadeaux Road/Three Rivers Rd to Hwy 605 – Move from FY 2015 to FY 2016
- Bay St. Louis – US 90 Pedestrian Path/BSL Bridge to Main St – Move from FY 2015 to FY 2016
- D’Iberville – D’Iberville Blvd/Central Ave to Automall Pkwy - Move from FY 2015 to FY 2016
- Harrison County – Biloxi River Bridge/Lorraine Rd – Change from FY 2014 to FY 2015
- Gautier – Hwy 57/Brown Road - Change from FY 2015 to FY 2016
- Gulfport – Pass Road Signal System/16 intersections - Change from FY 2014 to FY 2015
- Gulfport – Courthouse Rd/Pass Rd to US 90 – Change from FY 2018 to FY 2017
- D’Iberville – D’Iberville Blvd and Big Ridge Rd/ I-10 ramps – Change from FY 2015 to FY 2016
- Bay St Louis – Old Spanish Trl/Main St to Waveland Limits - Change from FY 2015 to FY 2016

**April 2014 Amendments/Modifications:**

- Ocean Springs – Government St - Hanley to Hanshaw add funds - \$167,300

**June 2014 Amendments/Modifications:**

**Amendments**

- Ocean Springs – Porter Avenue/Martin Avenue to Howard Avenue. Remove Project.
- Jackson County – Hwy 57/Old Spanish Trl to US 90. Remove Project.
- CTA – Purchase replacement mobile surveillance equipment. \$128,000 (FTA) \$32,000 (CTA) Add Project.
- CTA – Expansion of the Gulfport Transit Center Intermodal Hub. \$6,560,000 (FTA) \$1,640,000 (CTA) Add Project.

**October 2014 Amendments/Modifications:**

**Modifications**

- Advance construction strategy was implemented

**March 2015 Amendments/Modifications:**

**Modifications**

- Added \$1,550,000 in TE funds under the TAP group in 2015

### **June 2015 Amendments/Modifications:**

#### **Modifications**

- Harrison Co.–Biloxi River Bridge. Move \$3,000,000 STP into FY14 from FY15. Leave balance of \$1,211,197 STP in FY16.
- Gautier - Martin Bluff Rd. Add ROW Phase. \$3,199,682 Fed. Earmark
- CTA – Change funding fiscal year. Expansion of Gulfport Transit Center Intermodal Hub. Move and split \$6,560,000 in FY 2015 to FY 2016 (\$3,280,000) and FY 2017(\$3,280,000).

#### Group Project Adjustments

- D'Iberville – Add project to Safety Group. D'Iberville Blvd and Boney Ave. Traffic signal. \$125,000 STP at 100%.
- D'Iberville – Remove project from Bike/Ped/Transit Group. D'Iberville Blvd/Central Ave to Automall Pkwy. \$97,002 STP
- GRPC – Adjust funding for safety projects to reflect each county's MOU.
- Long Beach – Added study. Pineville Rd. \$60,000
- Diamondhead – Added study. Circulation. \$60,000

### **Amendments**

#### Remove from TIP

- Gulfport – Ship Island Terminal Project. \$560,301 STP
- Pass Christian – Cedar Ave/ Railroad to US 90. \$163,570 STP

#### Add to TIP

- Waveland - Waveland Avenue Sidewalk Project: \$1,264,000 STP
- Gulfport - Landon Road Widening Project PH I: \$1,000,000 STP
- Gulfport - Airport Road Improvements: \$550,000 STP
- Pass Christian - North Street Sidewalks: \$452,800 STP

### **October 2015 Amendments/Modifications:**

#### Amendment: Added to TIP

- Biloxi - Poppo Ferry Road. Submarine Cable. \$749,000 STP (Request made by MDOT)

### **November 2015 Amendments/Modifications:**

- Move Moss Point Main Street sidewalks project from FY17 to FY18
- Move Jackson County Hwy 609 @ Old Fort Bayou from FY18 to FY19

- Move Pascagoula Hospital Road from FY17 & 18 to FY16 & 17
- Move Biloxi Pops Ferry Extension from FY19 to FY18
- Adjust D'Iberville Big Ridge Road project AC funding split
- Move Gulfport Courthouse Road project from FY17&18 to FY16&17
- Move Gautier Martin Bluff Road project from FY16 & 17 to FY17 &18
- Adjust Biloxi River Bridge AC funding split
- Move Jackson County Lemoyne Blvd @ Brittany Ave from FY16 to FY17

#### **June 2016 Amendments and Modifications**

- Add MDOT project: Bridge Group #107213-10100 (FY2016) I-10 Widening from Hwy 57 to the Alabama State Line. (Funding for preliminary engineering phase – total \$750,000 (\$600,000 Federal, \$150,000 State/Local))
- Increase Funds \$259,260 for Gulfport's Dedeaux Road project
- Increase Funds \$676,270 for Gulfport's Courthouse Road project
- Increase Funds \$1,208,133 for Gulfport's Landon Road project
- Remove Gautier Hwy 57 & Brown Road Signal Project at LPA request
- Remove D'Iberville Big Ridge and D'Iberville Blvd Project at LPA request
- Add Waveland, Nicholson Ave overlay and widening, \$800,000 STP
- Add Diamondhead, Golf Club Drive Roundabout, \$200,00 STP
- Add Diamondhead, I-10 interchange lighting, \$400,00 STP
- Add Long Beach, Pineville Road sidewalks, \$1,000,000 STP
- Add D'Iberville Pops Ferry Realignment, \$2,938,779 STP
- Add Jackson Co. Signal at Lemoyne and McCann, \$360,000 STP
- Add Jackson Co. Yellow Jacket Street sidewalks, \$160,000 TAP
- Add Gulfport Seaway Road Multiuse Pathway, \$788,304 TAP
- Add Bay-Waveland School District Pine street sidewalks, \$244,000 TAP

#### Coast Transit Authority (CTA) Amendment(s):

- Sec 5307 Preventive Maintenance Increase to total \$1,663,000 (federal \$1,330,400, local \$332,600)
- Sec 5307 JARC Purchased Transportation Increase to total \$380,000 (federal \$380,000, local \$0)
- Sec 5310 New Freedom Services Increase to total \$840,000 (federal \$672,000, local \$168,000)
- Sec 5307 Mobility Manager Increase to total \$75,000 (federal \$60,000, local \$15,000)
- Sec 5307 Gulfport Intermodal Hub Increase to total \$8,345,000 (federal \$6,676,000, local \$1,669,000)
- Add New Project: Sec 5339 Gulfport Hwy 90 Tram Bridge Project Total \$9,856,000 (federal \$7,884,800, local \$1,971,200)

**September 2016 Amendments/Modifications:**

- Lemoyne and Brittany (Jackson Co.) received additional funds and was moved to 2016
- Courthouse Road (Gulfport) received additional funds and was moved to 2016
- Dedeaux Road (Gulfport) received additional funds and was moved to 2016
- Main Street (Moss Point) sidewalks were moved into 2016
- Hospital Road (Pascagoula) was divided into two projects (Phase 1 in FY16, Phase 2 in FY17)

**February 2017 Amendments and Modifications****Amendments:**

- Remove Bay St Louis, Old Spanish Trail lighting (\$640,640 STP)
- Remove Bay St Louis, Hwy 90 multiuse pathway (\$164,800 STP)
- Add Diamondhead, Aloha Dr widened shoulder (\$136,400 TAP)
- Add Diamondhead, Noma Dr multiuse pathway (\$430,400 TAP)
- Add Diamondhead, Golf Club Dr sidewalk extension (\$400,000 STP)
- Add Ocean Springs, Porter Ave bike/ped improvements (\$930,000 STP)
- Add Gulfport, Ship Island Ferry program upgrades (\$1,156,913 Earmark)
- Add Gulfport, Hwy 90 and 20<sup>th</sup> Ave Improvements (\$507,169 STP)
- Funding Increase, Gulfport, Dedeaux Rd by \$1,573,635 STP in FY17
- Funding Increase, Gulfport, Courthouse Rd by \$623,598 STP in FY17

**Coast Transit Authority (CTA) Amendment(s):**

- CTA Funding Increase: Computer Equipment, Sec 5307 increase from \$16,000 to \$24,000
- CTA Additional Funds: Expand Gulfport Multimodal Hub, Sec 5307 \$8,878,408 FY18
- CTA Additional Funds: Gulfport/Hwy 90 Bike/Ped/Tram Bridge, Sec 5339 \$8,925,500 FY18

**Modifications:**

- Bay-Waveland School District, Pine Street moved FY17 to FY18
- Gulfport, Seaway Road moved from FY17 to FY18
- Gulfport, Airport Road moved FY17 to FY19
- Jackson Co, Lemoyne/McCann moved from FY17 to FY18
- Jackson Co, Hwy 609 & Old Fort Bayou moved from FY19 to FY20
- Jackson Co, St. Martin N Elementary moved from FY20 to FY18
- D'Iberville Boney/D'Iberville Blvd moved from FY17 to FY18



- D'Iberville Poppo Ferry Realignment advance construction over FY18 and FY19
- Biloxi Poppo Ferry Extension advance construction over FY18 and FY19
- Diamondhead, Golf Club Drive Roundabout moved from FY18 to FY17
- Waveland, Waveland Ave moved from FY19 to FY18
- Long Beach, Pineville Road moved from FY20 to FY17

### **May 2017 Amendments & Modifications**

#### **Amendments:**

- Long Beach, Changed Pineville Road project termini from Alexander Road to Harper-McCann School
- ~~Waveland, Changed Waveland Ave project termini from Dubuc Lane to the city park south of CSX RR tracks~~ *City elected not to change termini*
- Gulfport, Add Ship Island Ferry Terminal Improvement Project, Earmark Funds \$1,156,913

#### **Modifications:**

- Pascagoula, Decrease Hospital Road Phase 2 FY17 STP/Non-urban funds by \$142,274, total is \$1,250,943
- Pascagoula, Increase Hospital Road Phase 1 FY16 STP/Non-urban funds by \$356,766, total is \$1,256,766
- Biloxi, move Poppo Ferry Extension from FY18/19 to FY19/20
- Gulfport, Add \$383,000 STP to Courthouse Road in FY17
- Hancock Co, Change Beach Access Study termini from Buccaneer State Park to Lakeshore Drive
- GRPC, Add STP group funds to Get To B safety projects, phase 2 development \$150,000
- GRPC, Add STP group funds to Get To B professional development safety series \$12,000
- Jackson Co, Add STP group funds to the Countywide Bike Plan Study, increase from \$80,000 to \$91,463

### **August 2017 Amendments & Modifications**

#### **Amendments:**

- Removal of 3 Diamondhead projects from the TIP: Golf Cart Drive Sidewalks, Golf Cart Drive Roundabout & Noma Drive Multi-use Pathway
- Removal of Biloxi Sidewalk project on Reynoir and Jackson Streets

#### **Modifications:**

- Waveland, increase funds for FY17 Waveland Sidewalk Study from \$80,000 to \$82,641
- Biloxi, add the Biloxi Rail Corridor Study for \$150,000 FY18 STP-Study Group
- Pascagoula, Move Hospital Road Ph. 2 from FY17 to FY18
- Bay St Louis, Move Carrol Ave SRTS project from FY17 to FY18
- Diamondhead, Move I-10 lighting project to FY18 to align with MDOT reconstruction project
- Gautier, Remove Advance Construction for Martin Bluff Road, project in FY19
- D'Iberville, Remove Advance Construction for Poppo Ferry Realignment, project in FY20
- Long Beach, Termini Correction on Pineville Rd sidewalks from Royal Dr to Willow Creek Dr
- Biloxi, include TIP Page for Poppo Ferry Bridge replacement earmark funds (not programmed at this time)

## **December 2017 Amendments & Modifications**

### **Amendments:**

- Pascagoula, Increase Hospital Road Phase 1 funds by \$55,706, new total is \$1,312,472
- Pascagoula, Increase Hospital Road Phase 2 funds by \$293,852 and \$170,140 for RR costs, new total is \$1,714,935

### **Modifications:**

- D'Iberville, Increase Boney Ave Signal STP allocation by \$73,500, new total is \$198,950
- Diamondhead, increase STP allocation for I-10 lighting project by \$48,485, new total is \$448,485

## **January 2018 Amendments & Modifications**

### **Modifications:**

- Gautier, Split project between FY19 & 20, adjust Non-Urban funds allocation to reflect available balances and shift remaining funding to STP-TMA as the funding source. All totals remain the same.
- GRPC Traffic Signal Prioritization Project funding increase from \$40,000 to \$50,000 in FY2018
- Jackson County, Shift the McCann Road Overpass Study from FY17 to FY18 to reflect actual obligation year
- Biloxi, Adjust ROW phase for Popp's Ferry Road Extension. Shift from FY17 to FY18 and update earmark funds with available federal balances. ROW costs exceeded available federal funds, city is covering balance so match will exceed the original 20% match requirement.

## **March 2018 Amendments & Modifications**

### **Amendments:**

- Biloxi, Increase funds for Popp's Ferry Submarine Cable by \$429,000. Increase from \$749,000 to \$1,178,000

### **Modifications:**

- Diamondhead, Include a technical study on E. Aloha drive from Veterans to Kalani Drive in the FY18 study/projects group
- Pass Christian, include replacement of the Clark Ave. Bridge in the FY18 study/projects group

NOTE: at March 1 MPO-TPC meeting new TIP handbook policies were adopted which included a funding increase cap of 20%. This applies to project totals currently on the 2017-2020 TIP and original award totals of projects added to the TIP after March 1, 2018.

## **April 2018 Amendments & Modifications**

### **Modification:**

- Diamondhead, Increase funds for Interchange lighting project by \$89,697 STBG. Increase from \$448,485 to \$538,182 which maxes out their 20% increase capacity for this project.
- Jackson County, Move St. Martin N. Elementary sidewalk project from FY18 to FY19
- Pass Christian, Move Clark Street bridge replacement project from FY18 to FY19

## **August 2018 Amendments & Modifications**

### **Amendments:**

- Gulfport, Landon Road add \$751,867 STBG. Increase from \$2,208,133 to \$2,960,000 STBG
- Bay-Waveland School District, remove Pine St. sidewalk project from the TIP
- Gulfport, Add Dedeaux Rd (Ph. 2) Hwy 605 to Jessica Ln. to TIP Illustrative List \$3,760,000
- Bay St Louis, Add Beyer Dr. sidewalks from Carrol Ave. to Ranch St. in FY19, \$280,000 TAP
- Diamondhead, Add Montjoy Creek pathway from Diamondhead Drive to Rotten Bayou in FY 19, \$80,000 TAP
- Hancock Co., Add Washington St. Accessibility around S. Beach Blvd to FY19, \$240,000 TAP
- USM-Gulf Park, Add Gulf Park Dr. sidewalk from Bear Point to north of Hardy Hall in FY19, \$231,400 TAP
- Gulfport, Add Old Hwy 49 sidewalk from Oak Ln. to Robinson Rd. in FY20, \$160,000 TAP
- Gulfport, Add multiple school zone improvement projects to FY20, \$210,278 STBG
- Biloxi, Add Main St. and CSX rail line crossing to FY20, \$150,000 STBG
- Ocean Springs, Add East Beach Dr. from Holcomb Blvd. to Halstead Rd. to FY20, \$384,000 STBG (BPT)
- Bay St Louis, Add Washington St. sidewalks from Old Spanish Trl. To St. Francis St. in FY20, \$120,000 STBG (BPT)
- Ocean Springs, Add Ocean Springs Rd. from US 90 to Culeoka Dr. to FY21, \$2,258,400 STBG
- Moss Point, Add Jefferson St. sidewalks to include portion on Main St to 2nd St. to FY21, \$412,000 Non-urban STBG
- Harrison Co, Add Landon Rd. reconstruction from Coleman Rd. to 34th St. to FY21, \$1,360,000 STBG
- Long Beach, Add Pinville sidewalks ph. II from Harper MCCAughan to Klondyke Rd. to FY21, \$400,000 STBG (BPT)
- Long Beach, Add Klondyke and Commission Rd. intersection to FY22, \$760,000 STBG
- Biloxi, Add Woolmarket Rd. sidewalks from Airport Rd. to Lorraine Rd. in FY22, \$880,000 TAP
- Moss Point, Add Macphelah Rd. and Jefferson St. intersection to FY22, \$509,000 Non-urban STBG
- Waveland, Change termini on Nicholson Ave. from Beach Blvd. to Jeff Davis Ave.

### **Modifications:**

- Gulfport, Seaway Road add \$157,660 funds. Increase from \$788,304 to \$945,964.
- Biloxi Woolmarket Sidewalks – Changed funding source from TAP to STBG
- Gulfport, 20th Ave. move from FY18 to FY19 (obligated in FY18)
- Diamondhead, E. Aloha Dr. move from FY18 to FY19
- Biloxi, Popp's Ferry Extension. Move from FY 19 to FY22.
- Gulfport, Airport Rd. Move project to the Illustrative List

- Biloxi, move Popps Ferry bridge replacement to TIP Illustrative List, no MPO funds
- D'Iberville, move Popps Ferry Rd. from D'Iberville Blvd. to Belle St. to TIP Illustrative List \$2,938,780

#### **October 2018 Modifications and Amendments**

- Waveland - Waveland Ave Sidewalks, add \$210,560 TAP - From \$1,052,800 to \$1,263,360
- Biloxi - Cedar Lake Bridge - Move all funds for project into FY 22 \$300,000 +\$260,000

#### **November 2018 Modifications and Amendments**

- Diamondhead - Move East Aloha Study from FY18 to FY19 - **MODIFICATION**
- City of Gulfport - Approve US 49 Pedestrian Study - \$120,000 STBG \$150,000 Total - **MODIFICATION (11-29 TPC)**
- City of Gulfport - Courthouse Road - add \$192,000 from \$4,336,400 to \$4,528,400 - **MODIFICATION**

#### **February 2019 Modifications and Amendments**

- Clark Ave Bridge project LPA change from Pass Christian to Harrison County - **MODIFICATION**

#### **March 2019 Modifications and Amendments**

- Moss Point Interstate Commerce Area Study \$80,000 STP - **MODIFICATION by poll vote**
- City of Gulfport - Courthouse Road - add \$180,000 (for improvements to rough surface) **MODIFICATION**
- City of Gulfport - Landon Road - Break out RR work from approved total - **MODIFICATION**

#### **April 2019 Modifications and Amendments**

- Jackson County - St. Martin Elementary Sidewalks TAP - Increase from \$160,000 to \$192,000 **MODIFICATION**

#### **May 2019 Modifications and Amendments**

- MDOT - bridge replacement project on US 49 between O'Neal Road and School Road. \$5,000,000 TOTAL **AMENDMENT**

#### **July 2019 Modifications and Amendments**

- MDOT - add \$6,500,000 to MDOT's Gulf Coast UZA 2019 Safety Group - **MODIFICATION**
- Pascagoula - add Market Street Signalization Project. \$745,000 (HIPF) - **AMENDMENT**
- Moss Point - Combine Jefferson Ave intersection project and Jefferson Ave/Main sidewalk project. \$921,000 - **MODIFICATION**

## October 2019 Modifications

### Grouped Projects

- Harrison County. Clark Road Bridge project – Move from 2019 to 2020
- Ocean Springs. Wayfinding Study – Move from 2019 to 2020
- Gulfport. Electric Vehicle Charging Station Study – Remove from TIP
- Harrison County. Active Living Initiative – Move from 2019 to 2020
- Diamondhead. Commercial Corridor District Study – Move from 2019 to 2020
- Bay St. Louis. Multiuse Pathway Study – Move from 2019 to 2020
- Gulfport US 49. Pedestrian Safety Study – Move from 2019 to 2020
- Moss Point. Interstate Commerce Area Study – Move from 2019 to 2020
- Pass Christian. North Street Sidewalks – Move from 2019 to 2020
- GRPC/CTA. TSP project – Move from 2019 to 2020

### Other Projects

- Gulfport. Landon Road – Move from \$1,751,867 from 2019 and added it to the \$1,208,133 already in 2020.
- Jackson County. Hwy 609 @ Fort Bayou Road – Move from 2020 to 2021
  
- Gulfport. Increase funding for Courthouse Road by \$210,566
  
- Biloxi. Breakout \$20,000 from existing allocation for RR Diagnostics

## December 2019 Changes

Gulfport - Interconnecting Gulfport, BUILD Grant Award \$20,460,000 (Also add to the 2040 MTP.) **AMENDMENT**

Gautier - Martin Bluff Road (increase federal funding by \$1,442,074) **AMENDMENT**

CTA - Facility Rehab & Renovations (CTA garage renovation - increase FTA 2020 funding by \$792,989 from \$200,000 to \$992,989) **AMENDMENT**

### GRPC Safety Projects

Harrison - \$362,000 to \$318,346 , Hancock - \$350,000 to \$331,996, Jackson - \$287,000 to \$393,565 **MODIFICATION**

Diamondhead - Increase Aloha Drive by \$27,280 to \$163,680 **MODIFICATION**

Added Studies approved at the TPC meeting on December 5th to Study Group **MODIFICATION**

Gulfport - Reduced Airport Road by \$402,915 and added the same amount to Courthouse Road **MODIFICATION**

Gulfport - 28th Street. Add \$117,719.19 STBG. From \$4,500,000 to \$4,617,719 STBG

### **February 2020 Changes**

MDOT - Increased funding in the FY 2020 Bridge Group from \$125,000 to \$15,000,000

Gautier - Move RR crossing study from FY2020 to FY2021

### **March 2020 Changes**

Gulfport BUILD project modification. Separate into phases

### **March 2020 Changes**

Added funds to \$1,606 to Ocean Springs Wayfinding Study **MODIFICATION**

### **June 2020 Changes**

Gulfport - Seaway Road Pathway increase from \$945,964 to 1,105,964 **MODIFICATION**

Gulfport - 20th Avenue increase from \$507,169 to \$607,169 **MODIFICATION**

Diberville - Mallet Road Study \$80,000

### **July 2020 Changes**

Add TA funds for Martin Bluff Road in Gautier from Roy's Road to Little Bend Place for \$646,000 (federal) - \$808,000 (total) and a pedestrian connection plaza for Mississippi Gulf Coast Community College Jeff Davis Campus in Gulfport for \$244,356 (federal) and \$305,446 (total) **MODIFICATION**

I-10 Connector Road (Cook Road) between Hwy 609 and Hwy 15 near I-10 Jackson and Harrison Counties. Local funds of \$8,279,616 and federal earmark funds of \$654,289 **AMENDMENT**

### **July 2020 Changes**

Increase Gulfport School Zone Safety by \$42,056 (20%) to \$252,333 **MODIFICATION**

### **September 2020 Changes TIP UPDATE**

CTA 2023 - 2024 POP

JCCAC Bus rehab

Bay St Louis - Hwy 603 I-10 to US 90 \$180,000

Gulfport - US 49 Creosote Road to Turkey Creek \$2,162,720

D'Iberville - Brodie Road at Automall Parkway \$432,000

Long Beach - 28th Street at Klondyke Road \$800,000  
Ocean Springs - Ocean Springs Road at Groveland \$1,132,430  
D'Iberville - Suzanne Drive at Automall Parkway \$480,000  
Pass Christian - Menge Avenue to Espy Avenue \$2,591,038  
Bay St Louis - Old Spanish Trail Seube Street to Main Street \$600,000  
Gautier - Martin Bluff Gautier-Vancleave Road to Martin Bluff Elementary \$720,000  
Jackson County - Lemoyne Boulevard McCann Road to 3300 feet east \$262,151  
Long Beach - Pineville Road Seal Avenue to Railroad Street \$600,000  
Hancock County - Lakeshore Road Beach Road to Lower Bay Road \$480,000  
Harrison County - Bethel Road & Success Road to Hwy 67 \$471,200  
Port of Gulfport - US 49 signal timing plans \$200,000

#### **October 2020 Changes MODIFICATION**

GRPC/CTA TSP project - \$500,000 Move from 2020 to 2021  
Ocean Springs - Steelman Road STUDY - Move from 2020 to 2021 \$48,000  
Biloxi - Atkinson Road \$15,000 STUDY Move from 2020 to 2021  
Gulfport - Pavement Management STUDY \$80,000 Move from 2020 to 2021  
Bay St Louis - ADA Improvements STUDY Move from 2020 to 2021 \$28,000  
Jackson County - Hwy 609 STUDY Move from 2020 to 2021 \$112,000  
Long Beach - Beatline Road ENV STUDY Move from 2020 to 2021 \$150,000  
Ocean Springs - Downtown parking STUDY Move from 2020 to 2021 \$40,000  
Long Beach - 5 points intersection STUDY Move from 2020 to 2021 \$96,000  
Biloxi - Point Cadet Improvements STUDY Move from 2020 to 2021 \$30,000  
Ocean Springs - East Beach Pathway - Move from 2020 to 2021 \$384,000  
Gautier - Martin Bluff Road Move from 2020 to 2021 Multiple funding sources Non-urb, TMA, HIP  
Bay St Louis - Washington Street Sidewalks - Move from 2020 to 2021 \$120,000  
Gulfport - Landon Road \$2,960,000 - Move from 2020 to 2021

#### **October 2020 Changes AMENDMENTS**

Waveland - St Joseph Street/Herlihy St and Old Spanish Trail - \$500,000 TAP  
Diamondhead - East Aloha Drive PH 2/Veterans to Kalani Drive - \$489,866 TAP  
Ocean Springs - Hanshaw Road/Ped Signal @ Cabildo Place - \$82,680  
Bay St Louis - Ranch Street/Esplanade Street to Athletic Drive - \$120,000

Bay St Louis - Pine Street/Bay High School - \$140,000

Pascagoula - US 90 Lighting/Pascagoula Street to Industrial Road - \$1,021,913

#### **December 2020 Changes**

Jackson County - Highway 609 Gateway and Traffic Study add \$579 STBG to \$112,579 **MODIFICATION**

Gulfport - Landon Road TIP page changes - **MODIFICATION**

#### **February 2021 Changes**

Gautier - Combined the Martin Bluff Road Project with the Martin Bluff Road Pathway Project. Added \$720,000 to the original MB Rd project - **MOD**

#### **April 2021 Changes**

Ocean Springs - Government Street Improvements Hanley Road to Hanshaw Road breakout PHII \$230,000 - **Mod**

#### **May 2021 Changes**

Ocean Springs - Ocean Springs Road change termini from US 90 to Culeoka Dr to US 90 to Rod and Reel St - **Amend**

Gulfport - Interconnecting Gulfport BUILD project - add \$7,780,000 in local funds - **Amend**

Diamondhead - Add to Study Group - Wayfinding Study \$58,500 - **Mod**

#### **June 2021 Changes**

Biloxi - Woolmarket Road Sidewalks - Change terminus from Airport Road to Shriner's Blvd - **Amend**

#### **July 2021 Changes**

City of Moss Point - Add illustrative project - Interstate 10 Commercial Corridor Improvements - \$4,500,000 **Mod**

Harrison County - Add illustrative project - I-10 Menge Avenue interchange -\$10,000,000 **Mod**

City of Long Beach - Add illustrative funding to project - Beatline Road Corridor Improvements - \$150,000 **Mod**

City of Biloxi - Add illustrative funding to project - Popps Ferry Road Improvements - \$2,100,000 **Mod**

#### **September 2021 Changes**

City of Biloxi - Woolmarket Traffic Study Federal\$24,000, Local\$6,000, Total\$30,000 **Mod**

#### **October 2021 Changes**

Jackson County - Roy Cumbest Bridge \$4,700,000 **Amend**

MDOT - 2022 O&M group is being revised from \$18,200,000 total, to \$22,000,000 total **Mod**

Ocean Springs - Ocean Springs Road cost increase \$460,000 HIP **Amend**



Ocean Springs - Government Street cost increase \$285,000 HIP **Amend**  
Biloxi - Pass Road @ Rodenberg Drive added new project \$504,560 HIP **Amend**  
Biloxi - Main Street @ CSX cost increase \$200,000 HIP **Amend**  
Jackson County - Old Fort Bayou cost increase \$750,000 HIP **Amend**

#### **December 2021 Changes**

Ocean Springs - Ocean Springs Road termini change from Rod and Reel Street to Deana Drive **Amend**  
Mississippi Gulf Coast Community College - Campus Pedestrian Connection Plaza - Pedestrian Improvements. MDOT TA \$305,446.00 **Mod**  
Bay St Louis - Pine Street move from 2022 to 2023 **Mod**  
Bay St Louis - Ranch Street move from 2022 to 2023 **Mod**  
Gulfport - Pavement Management study move from 2022 to 2023 **Mod**

#### **March 2022 Changes**

Biloxi - Main Street @ CSX add \$20,000 **Mod**

#### **May 2022 changes**

Add CTA Tram Bridge Project to TIP / FTA5339(b) - \$7,606,960 (80%), FTA5307 - \$4,000,000 (80%), Local - \$7,100,000 **Amend**  
Ocean Springs – Add US 90 @ Wachington Avenue & MLK JR Avenue Study (\$120,000 federal) **Amend**  
Diberville – Add Lamey Bridge Road Sidewalks Project (\$402,570 Transportation Alternatives) **Amend**  
MDOT – Add Hwy 57 Project (\$136,000,000 federal & \$31,600,000 federal) **Amend**  
Long Beach – Railroad Corssing Grade Improvements (\$2,500,000 100% federal) **Amend**

#### **June 2022 changes**

Ocean Springs - East Beach Pathway Scope Change from 6.5 sidewalk to 10 ft multiuse pathway **Amend**

#### **August 2022 changes**

MDOT - Hwy 57 Combined the 301000 and 302000 details into just one 301000 detail - Mod

#### **August 2022 Changes Update**

Biloxi - Popp's Ferry Road Extension - Add funding \$2,100,000  
Bay St Louis - Hwy 603 - Add funding \$220,000  
Hancock - Texas Flat Road Add project \$184,0567  
Diamondhead - Weat Aloha Add project \$800,000  
Gulfport - Wasington Avenue Add project \$2,800,000

Gulfport - Airport Road Add project \$400,000  
Ocean Springs - Reily Road Add project \$934,054  
Gulfport - Oneal Road @ Three Rivers Road Add project \$440,000  
Biloxi - Pass Road @ Iberville Drive Add project \$430,560  
Biloxi - Pass Road @ McDonnell Add project \$488,720  
Jackson County - Hwy 613 @ Hwy 614 roundabout Add project \$600,000  
Long Beach - Beatline Road @ 28th Street Add project \$287,750  
Long Beach - Klondyke, RR, Jeff Davis roundabouts Add project \$542,800  
Biloxi - MGCCC add project \$480,000  
Pass Christian - Henderson Avenue @ North Street add project \$487,264  
Jackson - Biddix Evans @ Main Street add project \$1,200,000  
Diberville - Lamey Bridge Road add project \$558,400  
Gautier - Gautier-Vanceave Road add project \$215,160  
Bay St Louis - Seube Street add project \$482,126  
Bay St Louis - Felicity Street add project \$546,677  
Hancock County - Texas Flat Road (Santa Rosa Pathway) add project \$755,565  
Pass Christian - North Street Extension REMOVE PROJECT \$2,591,038  
Biloxi - Cedar Lake Road Bridge REMOVE PROJECT \$560,000

Swap \$285,000 in HIP and STBG between MPO Safety Projects and Ocean Springs Government Street Phase II - **Mod**

Ocean Springs Road - Change FY 2023 to 2022 **Mod**

#### **October 2022 changes**

Long Beach - Pineville Road PH II change funding source and increase funding by 20% - **Mod**

#### **November 2022 Modifications**

Long Beach - Klondyke, RR, Jeff Davis Intersections - Description Change

Bay St Louis - ADA study increase from \$28,000 to \$50,000 FY22 to FY23

Bay St Louis - Beyer St Sidewalks FY22 to FY23

Hancock - Lakeshore Rd FY22 to FY23

Biloxi -Woolmarket Sidewalks FY22 to FY23

Long Beach - Klondyke @ Commission FY22 to FY23

CTA - TSP project FY22 to FY23  
Pass Christian - North St FY22 to FY23  
Ocean Springs - Government Street FY22 to FY23  
Diamondhead - Montjoy Creek FY22 to FY23  
Diamondhead - Wayfinding Study FY22 to FY23

#### December 2022 Changes

Add Funding - Beatline Road Pkwy Congressional Directed Spending HIP - \$150,000 - **Amend**  
Add Study - Long Beach Transportation Master Plan - \$80,000 STBG **Amend**  
Add Study - GRPC Harrison County & Gulfport Airport Connector Master Plan - \$80,000 STBG **Amend**  
Deallocate Funding - Moss Point Macphelah Road **Amend**  
Deallocate Funding - Gulfport US 49 Pathway **Amend**  
Deallocate Funding - Ocean Springs Hanshaw Road Pedestrian Signal **Amend**  
Add Project - City of Gautier Dolphin Dr RR Overpass \$15,200,000 **Amend**  
Add Funding - City of Moss Point I-10 Interstate Commerce project HIP Earmark - \$4,500,000 **Amend**  
Add Funding - City of Biloxi Pops Ferry Extension HIP Earmark - \$2,163,000 **Amend**  
Add Project - City of Pascagoula RR Crossing Project \$1,200,000 Non-urb **Amend**  
Add Project - City of Diberville Lamey Bridge Rd @ Mallet Rd intersection **Amend**  
Add Study - GRPC Moss Point Interstate Commerce Study \$300,000 HB1413 **Amend**  
Add Project-- Moss Point Dantzler Street \$260,000 non-urb **Amend**  
Add Project - City of Diberville Mallet Rd **Amend**  
Add Project - City of Diberville Bike Ped Bridge Project **Amend**  
Add Project - City of Gulfport Three Rivers Road - **Amend**  
Split Project - City of Gulfport Dedeaux Rd Split Project - **Amend**  
Add Study - City of Diberville Rodriguez Street/I-110 Traffic Study - \$80,000 **Amend**  
Combine Projects - Bay St Louis Pine, Seube, Ranch and Felicity **Mod**  
Swap funding - Diberville Pops Ferry Rd - STBG and HIP **Mod**

Jackson Co Roy Cumbest Bridge Moved from FY 2022 to FY 2023 **Mod**  
Hancock Co Texas Flat Santa Rosa Pathway moved from Illustrative to 2026 **Mod**  
Jackson Co - Hwy 609 & Old Fort Bayou swap HIP funding - **Mod**  
Biloxi - Pass Rd & Rodenburg Ave - Swap funding to CRP - **Mod**  
Biloxi - Pass Rd & Iberville Dr - Swap funding to CRP - **Mod**  
Safety Projects - Swap HIP to STBG \$285,000 **Mod**

Ocean Springs Reilly Road - Swap out HIP funds **Mod**

Safety Projects TIP page - Break out funding to show each County **Mod**

Hancock Co Texas Flat Reconstruction - Show PE Phase **Mod**

Gulfport - Landon Road increase \$1,500,000 STBG from \$2,952,000 to \$4,452,000 **Amend**

Biloxi - Popps Ferry Ext increase \$1,488,720 STBG from \$4,263,200 to \$5,751,920 STBG **Amend**

Jac Co - Lemoyne Sidewalks increase \$145,694 from \$262,151 to \$407,845 **Amend**

DI - Popps Ferry Rd add \$261,220 STBG from \$2,264,674 to \$2,525,894 **Amend**

Long Beach - Klondyke & Commission Intersection add \$325,000 STBG from \$760,000 to \$1,085,000 **Amend**

Bay St Louis - Hwy 603 Turning Lanes add \$150,000 STBG from \$400,000 to \$550,000 **Amend**

OS - Ocean Springs Road - HIP swap **Mod**

Hancock County - Washington St ADA access add \$350,000 STBG from \$240,000 to \$590,000 **Amend**