

MISSISSIPPI GULF COAST
FY 2025-2028
TRANSPORTATION
IMPROVEMENT
PROGRAM (TIP)



Projects and programs that contribute toward a safe, efficient, and resilient Gulf Coast transportation system

Mississippi Gulf Coast Metropolitan Planning Organization Transportation Improvement Program

FY 2025- 2028

NON-DISCRIMINATION ASSURANCE

As provided by Title VI of the Civil Rights Act of 1964 as amended, the Civil Rights Restoration Act of 1987 (P.L. 100.259) and related statutes, executive orders and regulations, the Gulf Regional Planning Commission (GRPC) assures that no person shall on the grounds of race, color, national origin, sex, sexual orientation, religion, age, or disability be excluded from participating in, be denied the benefits of, or otherwise subjected to discrimination under any program or activity from GRPC.

NOTATION OF FINANCIAL ASSISTANCE:

The preparation of this document has been financed in part through grants from the United States Department of Transportation, Federal Highway Administration, the Federal Transit Administration, and the Mississippi Department of Transportation. It was prepared as tasked in the Mississippi Gulf Coast MPO's FY 23-24 Unified Planning Work Program Task A-2.

TRANSIT PROGRAM OF PROJECTS:

Also listed in this document is Coast Transit Authority's Program of Projects that are funded by the Federal Transit Administration. The public meetings/comment period will satisfy the public participation requirements for the FTA Section 5307 and 5309 POP notice.

THE GULF COAST MPO

The Metropolitan Planning Organization (MPO) is a federally mandated planning body responsible for coordinating transportation programs in US Census designated urbanized areas. The Gulf Regional Planning Commission (GRPC) serves as the MPO for the Mississippi Gulf Coast and is the lead agency responsible for developing and administering plans and activities required to maintain eligibility and receive federal funds for the transportation systems in Hancock, Harrison and Jackson counties. The primary mission of the MPO is to develop and maintain a transportation planning process that is compliant with federal and state requirements and supports the development and enhancement of sustainable multimodal facilities, programs and systems in the Mississippi Gulf Coast area. The Transportation Improvement Program (TIP) is one of the most important products of the MPO's planning process.

THE TIP

The Transportation Improvement Program (TIP) is a financially constrained program developed through an on-going planning process for addressing short-term transportation priorities that are consistent with the MS Gulf Coast's Metropolitan Transportation Plan (MTP), the long-range transportation plan for our region. The TIP is developed and approved by the MPO and is included, without modification, in the Statewide Transportation Improvement Program (STIP) following approval by the Governor. The TIP can be amended by approval of the MPO policy committee. The Gulf Coast MPO allocates Surface Transportation Block Grant (STBG) and Transportation Alternative (TA) funds through TIP policies and processes described in the *MPO Handbook and Prospectus*.

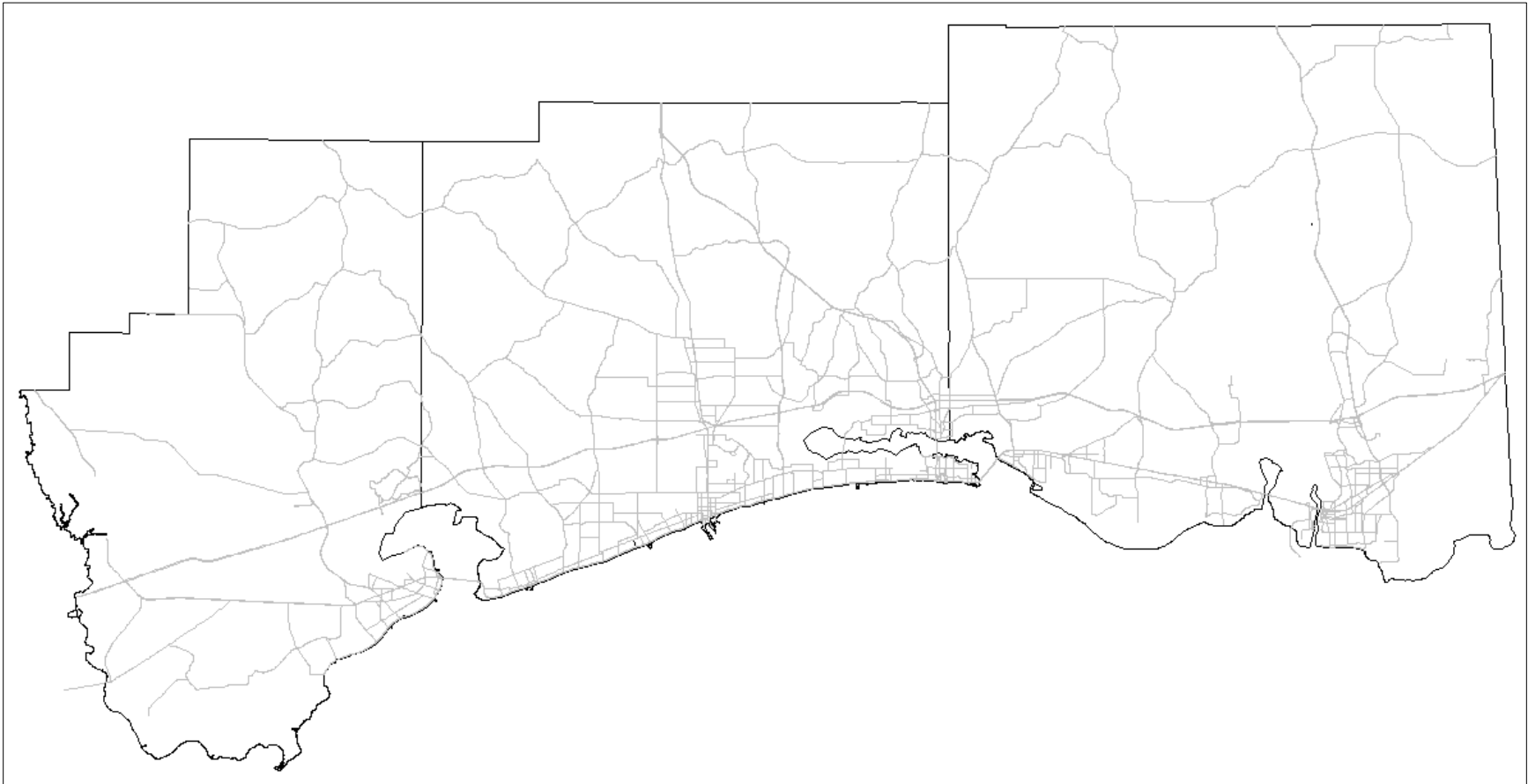
The Gulf Coast TIP identifies timing and funding of all federally funded transportation projects scheduled for implementation in the three coastal counties over a four-year period. The TIP identifies funding amounts, source of funds, project sponsor, type of project and year of funding for each project. All projects in the TIP must be consistent with goals and projects identified in the area's Metropolitan Transportation Plan. The TIP development process allows for public involvement at various points including public meetings where proposed projects are presented and discussed. Specific polices for public review are included in the MPO's *Public Participation Plan*.

The TIP development process occurs every two years, however the MPO provides opportunities to revise the projects in the TIP. Two types of changes include "amendment" and "administrative modification" depending on the level of change being made to the project. An amendment is a revision being made to the scope, termini, removal of a project or addition of a project. A modification is considered a minor revision to the TIP or STIP including the MS Gulf Coast MPO 20% maximum cost increase to a project. Specific polices for TIP changes are included in the *MPO Handbook and Prospectus*.

GULF COAST PLANNING AREA

The Mississippi Gulf Coast Planning Area encompasses three counties in which are located 12 municipalities: Waveland, Bay St. Louis and Diamondhead in Hancock County; Pass Christian, Long Beach, Gulfport, Biloxi and D’Iberville in Harrison County; and Ocean Springs, Gautier, Pascagoula and Moss Point in Jackson County. There are two distinct urbanized areas within the planning area: the Gulfport Urbanized Area (UZA) which stretches from Bay Saint Louis to Ocean Springs and includes portions of all three coastal counties; and the Pascagoula UZA located in the eastern half of Jackson County.

Figure 1: MS Gulf Coast MPO Planning Area



NATIONAL GOAL AND EMPHISIS AREAS

The TIP development process reflects the priorities and direction of the region guided by MPO Planning Factors. The MPO considers projects that will address the planning factors presented in Table 1 below.

Table 1: Planning Factors

- Economic Vitality - Support the economic vitality of the metropolitan area, especially by enabling global competitiveness, productivity, and efficiency
- Safety - Increase the safety of the transportation system for motorized and non-motorized users
- Security - Increase the security of the transportation system for motorized and non-motorized users
- Mobility & Accessibility - Increase the accessibility and mobility of people and for freight
- Environment - Protect and enhance the environment, promote energy conservation, improve the quality of life, and promote consistency between transportation improvements and State and local planned growth and economic development patterns
- Multimodal Connectivity - Enhance the integration and connectivity of the transportation system, across and between modes, for people and freight
- Operations - Promote efficient system management and operation
- Preservation - Emphasize the preservation of the existing transportation system
- Reliability & Resiliency - Improving transportation system resiliency and reliability
- Storm water - Reducing (or mitigating) the stormwater impacts of surface transportation
- Tourism - Enhancing travel and tourism

TIP INVESTMENT STRATEGY

The Gulf Coast TIP process places emphasis on the development of specific project types through project categories referred to as “groups”. The TIP groups influence how federal transportation funds are spent through earmarking a portion of these funds to support specific areas. Funding groups encourage the use of STBG funds for investment in priority focus areas, control amount of funding in an area and expedite project delivery and being more responsive to needs by not requiring a TIP amendment for each project. The current project groups are “Intersection Projects”, Bicycle and Pedestrian Projects”, and “Multimodal Projects”.

TIP PROJECT EVALUATION AND PRIORITIZATION

Given the fiscal realities of today and tomorrow with demands for budget reductions at all levels of national, state, and local government, decisions on where and how to spend the Mississippi Gulf Coast MPO’s allocation of STBG transportation funds should not be taken lightly. To ensure that the most beneficial projects are implemented, a project prioritization process is used. The criteria

used are based on federal goals, emphasis areas and performance measures for the MPO. Projects are evaluated by MPO staff and prioritized as needed to achieve performance targets and link investment decisions to goals.

PERFORMANCE MANAGEMENT

In 2012, the transportation MAP-21 was developed with the intent of creating a streamlined, performance-based, multimodal program. MAP-21 increased the accountability and transparency of Federal highway programs by improving transportation investment decision-making through performance-based planning and programming. Performance measurement provides the MPO with a better ability to identify and mitigate issues with their respective transportation networks. The Infrastructure Investment and Jobs Act (IIJA) continues MAP-21's overall performance approach and ensures that State DOT's and MPO's invest in projects that collectively make progress toward the National Goals that were established by Congress.

Table 2: Performance Goals

- Safety - To achieve a significant reduction in traffic fatalities and serious injuries on all public roads
- Infrastructure condition - To maintain the highway infrastructure asset system in a state of good repair
- Congestion reduction - To achieve a significant reduction in congestion on the National Highway System
- System reliability - To improve the efficiency of the surface transportation system
- Freight movement and economic vitality - To improve the national freight network, strengthen the ability of rural communities to access national and international trade markets, and support regional economic development
- Environmental sustainability - To enhance the transportation system while protecting and enhancing the natural environment
- Reduced project delivery delays - To reduce project costs, promote jobs and the economy, and expedite the movement of people and goods by accelerating project completion through eliminating delays in the project development and delivery process, including reducing regulatory burdens and improving agencies' work practices

The MPO, MDOT and CTA cooperatively develop and sharing information related to transportation performance data, the selection of performance targets, the reporting of performance targets, the reporting of performance to be used in tracking progress toward attainment of critical outcomes for the region of the MPO. The MPO will support CTA's State of Good Repair targets by programming capital improvement transit projects in the MTP and TIP. The MPO collaborates with MDOT on Safety, pavement and bridge, system performance and freight performance by reviewing STIP and TIP project to assess their impacts and identifying projects from MPO planning to support the measures. This TIP was developed in consideration of the established performance measures and targets. As required under current the most recent transportation act, the Gulf Coast MPO will establish performance targets, and track progress towards target achievement, for the following performance measures except as noted:

Table 3: Performance Measures

Safety (PM1)

- Number of fatalities
- Rate of fatalities per 100 million Vehicle Miles Traveled (VMT)
- Number of serious injuries
- Rate of serious injuries per 100 million Vehicle Miles Traveled (VMT)
- Number of non-motorized fatalities and serious injuries

Pavement Condition (PM2)

- Percent of pavements on the Interstate System in Good condition.
- Percent of pavements on the Interstate System in Poor condition.
- Percent of the non-interstate National Highway System in Good condition.
- Percent of the non-interstate National Highway System in Poor condition.

Bridge Condition (PM2)

- Percent of National Highway System bridges in Good condition.
- Percent of National Highway System bridges in Poor condition.

System Performance (PM3)

- Percent of the Person-Miles Traveled on the Interstate that are reliable.
- Percent of the Person Miles Traveled on the Non-Interstate National Highway System that are reliable.
- Truck Travel Time Reliability (TTTR) index on the Interstate

Traffic Congestion

- Annual hours of peak hour excessive delay per capita. *
- Percentage of Non-Single Occupancy Vehicle Travel. *

Total Emissions Reduction

- Total emissions reductions by applicable pollutants under the CMAQ program. *

Transit State of Good Repair

- Percentage of revenue vehicles exceeding their Useful Life Benchmark (ULB)
- Percentage of non-revenue service vehicles exceeding their ULB
- Percentage of facilities rated under 3.0 on the Transit Economic Requirements Model (TERM)
- Number of fatalities by mode
- Rate of fatalities per 100,000 total vehicle revenue miles by mode
- Number of injuries by mode
- Rate of injuries per 100,000 total vehicle revenue miles by mode
- Number of safety events by mode
- Rate of safety events per 100,000 total vehicle revenue miles by mode
- Mean distance between major mechanical failures by mode

**Not required for Gulf Coast MPO*

FISCAL CONSTRAINT

Federal regulations require that financial constraint of the Transportation Improvement Program (TIP) be demonstrated and maintained by year and shall include sufficient financial information to determine which projects are to be implemented using current and/or reasonably available revenues. The MPO will use the figures below to develop their fiscal constraint for the STBG and TAP funds for the planning area.

Congress passes a new *Transportation Bill* approximately every four to six years, the latest of which is entitled the *Infrastructure Investment and Jobs Act (IIJA)*. The Transportation Bill authorizes to each state a certain amount for each funding category (STBG, TAP, etc.) for the federal fiscal years it covers. These authorizations are based on the funds expected to be available in the Highway Trust Fund. Congress then passes an *Appropriation Bill* near the beginning of each year that establishes the exact amounts that the states can actually spend in their highway program. The appropriation bill establishes a certain percentage of the total authorization for the states, which is referred to as an *Obligation Limitation*. MDOT suballocates STBG funds to its urbanized areas with over 200,000 in population (Gulfport, UZA) and must make obligation limitation available based on the criteria set forth in 23 U.S.C. 133(e). MDOT makes available 100% of the Gulfport UZA suballocation obligation limitation for each fiscal year to actually spend.

TRANSIT PROGRAM OF PROJECTS

The Program of Projects (POP) reflects the Gulf Coast's federally supported transit projects over the next four fiscal years. The POP is consistent with the Metropolitan Transportation Plan (MTP) which implements regionally significant transit projects. The TIP lists each of FTA programs, the program funding sub-allocations, the government funding participation all which is identified by an ARC identification number. Notice for review of the POP is conducted by the MPO simultaneously with amendments and updates to the TIP. Public notice given is as follows: *"Also listed in this document is Coast Transit Authority's Program of Projects that are funded by the Federal Transit Administration. The public meetings/comment period will satisfy the public participation requirements for the FTA Section 5307 and 5309 POP notice. The proposed CTA Program of Projects will be final unless revised as a result of public comment."*

Satisfying the Requirement for Public Participation in Development of the POP using the Transportation Improvement Program Process. Federal transit law and joint FHWA/FTA planning regulations governing the metropolitan planning process require a locality to include the public and solicit comment when the locality develops its metropolitan long[1]range (twenty-year) transportation plan and its (four-year) metropolitan TIP. Accordingly, FTA has determined that when a recipient follows the procedures of the public involvement process outlined in the FHWA/FTA planning regulations, the recipient satisfies the public participation requirements associated with development of the POP that recipients of Section 5307 funds must meet. See 23 CFR part 450 and 49 CFR part 613 (specifically Subpart B, "Statewide Transportation Planning," and Subpart C, "Metropolitan Transportation Planning and Programming").

A recipient that chooses to integrate the two should coordinate with the MPO and make sure the public knows that the recipient is using the public participation process associated with TIP development to satisfy the public hearing requirements of Section 5307(b). The recipient must ensure the TIP document explicitly states that public notice of public involvement activities and time established for public review and comment on the TIP will satisfy the POP requirements of the Section 5307 Program. Furthermore, if recipients intend to follow such an ongoing practice, FTA encourages them to include such a reference in the metropolitan planning agreement required between public transportation operators, MPOs, and states, as called for in 23 CFR 450.314. Regulations at 23 CFR 450.316 provide a detailed description of the public participation plan.

PROJECT COST INCREASES

The Mississippi Gulf Coast MPO receives an annual distribution of STBG to be used by 15 or more Local Public Agencies. On March 1, 2018, the MPO voted to control project cost increases by allowing a maximum of 20% increase. If an LPA needs more funding for a project, MPO staff can approve additional funds up to 20% of the original project funding allocation. If more than 20% is needed for the project, the sponsoring local public agency (LPA) will have to cover the increased cost. An exception can be made for projects that were listed on the TIP prior to the update made in September 2018.

TIP MODIFICATIONS AND AMENDMENTS

| Total Project Cost of all phases shown within the approved TIP | If the proposed change is greater than or equal to the thresholds below process as an Amendment | If the proposed change is less than the thresholds below process as an Administration Modification |
|---|--|---|
| Up to \$2 Million | >/= 75% | < 75% |
| \$2 Million to \$15 Million | >/= 50% | < 50% |
| \$15 Million to \$75 Million | > / = 40% | < 40% |
| \$75 Million or above | >/= 30% | < 30% |

Note: Thresholds do not apply to grouped projects. All changes to grouped projects are processed as an Administration Modification.

SPECIAL MATCH CREDIT

The Gulf Coast MPO provides the opportunity for the use of Special Match Credit (SMC) Program. SMC is available for LPA projects and is to be requested only by those LPA's who advance fund those projects at their own cost. If requested in the project initiation process, the LPA may qualify to use actual incurred costs for Preliminary Engineering (PE), Right-of-Way (ROW), and other eligible costs as part, or all, of the required share for the construction project by obtaining Special Match Credit.

PUBLIC REVIEW

COMING SOON

Mississippi Gulf Coast TIP: Estimated Funding for FY2025-2028

| FY2025 Estimate | Funding Source | Carryover | Federal | Local | Total |
|-----------------|--------------------------------------|-----------|-------------|-------------|-------------|
| | TMA | | \$6,412,774 | \$1,603,194 | \$8,015,968 |
| | Non Urban | | \$965,333 | \$241,333 | \$1,206,666 |
| | Transportation Alternatives | | \$829,805 | \$207,451 | \$1,037,256 |
| | Safety Group | | \$500,000 | \$125,000 | \$625,000 |
| | Studies/Projects Group | | \$250,000 | \$62,500 | \$312,500 |
| | Carbon Reduction Program - TMA | | \$859,945 | \$214,986 | \$1,074,931 |
| | Carbon Reduction Program - Non Urban | | \$187,217 | \$46,804 | \$234,021 |
| FY2026 Estimate | Funding Source | Carryover | Federal | Local | Total |
| | TMA | | \$6,556,029 | \$1,639,007 | \$8,195,036 |
| | Non Urban | | \$965,333 | \$241,333 | \$1,206,666 |
| | Transportation Alternatives | | \$846,401 | \$211,600 | \$1,058,001 |
| | Safety Group | | \$500,000 | \$125,000 | \$625,000 |
| | Studies/Projects Group | | \$250,000 | \$62,500 | \$312,500 |
| | Carbon Reduction Program - TMA | | \$877,144 | \$219,286 | \$1,096,430 |
| | Carbon Reduction Program - Non Urban | | \$190,961 | \$47,740 | \$238,701 |
| FY2027 Estimate | Funding Source | Carryover | | | |
| | TMA | | \$6,702,150 | \$1,675,538 | \$8,377,688 |
| | Non Urban | | \$965,333 | \$241,333 | \$1,206,666 |
| | Transportation Alternatives | | \$863,329 | \$215,832 | \$1,079,161 |
| | Safety Group | | \$500,000 | \$125,000 | \$625,000 |
| | Studies/Projects Group | | \$250,000 | \$62,500 | \$312,500 |
| | Carbon Reduction Program - TMA | | \$894,686 | \$223,672 | \$1,118,358 |
| | Carbon Reduction Program - Non Urban | | \$194,780 | \$48,695 | \$243,475 |
| FY2028 Estimate | Funding Source | Carryover | | | |
| | TMA | | \$6,851,193 | \$1,712,798 | \$8,563,991 |
| | Non Urban | | \$965,333 | \$241,333 | \$1,206,666 |
| | Transportation Alternatives | | \$880,595 | \$220,149 | \$1,100,744 |
| | Safety Group | | \$500,000 | \$125,000 | \$625,000 |
| | Studies/Projects Group | | \$250,000 | \$62,500 | \$312,500 |
| | Carbon Reduction Program - TMA | | \$912,580 | \$228,145 | \$1,140,725 |
| | Carbon Reduction Program - Non Urban | | \$198,676 | \$49,669 | \$248,345 |

NOTE: Funding estimates are based on the reasonable expectation of continued funding for all federally supported programs.

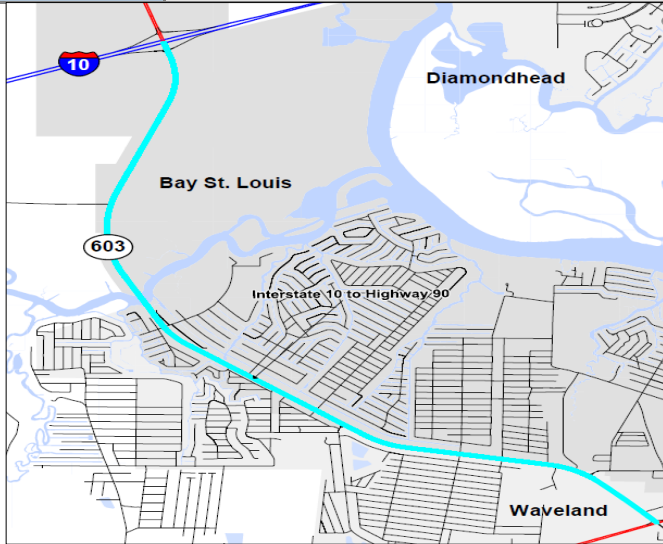
Hancock County

Mississippi Gulf Coast Metropolitan Planning Organization

FY2025-2028 Transportation Improvement Program (TIP)



| | | | |
|----------------------------|---|---------------|--------------|
| County | Hancock | Agency | Bay St Louis |
| Improvement Type | Multimodal | Route | Highway 603 |
| Project Termini | Interstate 10 to United States 90 | | |
| Project Number | | | |
| Project Description | Project will extend the length of turning lanes, improving roadway safety and traffic flow. | | |



| FY | Source | Phase | Federal | Local/Match | Total |
|---------------------------|--------|-------|------------------|------------------|------------------|
| | | PE | \$0 | \$68,750 | \$68,750 |
| 2025 | TMA | CON | \$550,000 | \$137,500 | \$687,500 |
| | | | | | |
| | | | | | |
| Total Project Cost | | | \$550,000 | \$206,250 | \$756,250 |

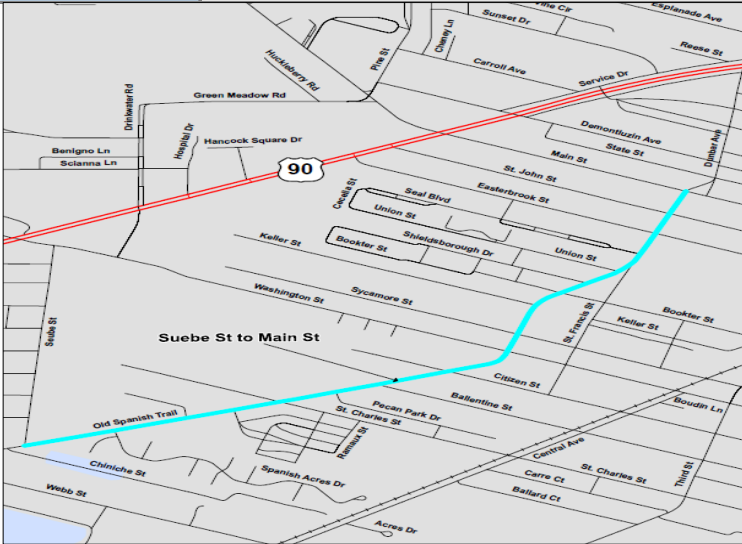
| Project Notes | | | | | |
|---|---|------|----------|------|-------|
| Action | Add to TIP | Date | 8/1/2020 | Type | Amend |
| Remarks | \$180,000 | | | | |
| Action | Cost increase | Date | 8/4/2022 | Type | Amend |
| Remarks | Add \$220K to project from 2022 call for projects | | | | |
| Action | Add funding | Date | 9/6/2023 | Type | Amend |
| Remarks | Add \$150,000 STBG. \$400,000 to \$550,000 STBG | | | | |
| Action | | Date | | Type | |
| Remarks | | | | | |
| Action | | Date | | Type | |
| Remarks | | | | | |
| Action | | Date | | Type | |
| Remarks | | | | | |
| Action | | Date | | Type | |
| Remarks | | | | | |
| *These projects are eligible for Special Match Credit if the LPA chooses to utilize | | | | | |

Mississippi Gulf Coast Metropolitan Planning Organization

FY2025-2028 Transportation Improvement Program (TIP)



| | | | |
|----------------------------|---|---------------|-------------------|
| County | Hancock | Agency | Bay St Louis |
| Improvement Type | Multimodal | Route | Old Spanish Trail |
| Project Termini | Seube Street to Main Street | | |
| Project Number | | | |
| Project Description | This project is to increase vehicular and pedestrian safety by lighting an existing sidewalk on a major transportation connection in Bay Saint Louis. | | |



| FY | Source | Phase | Federal | Local/Match | Total |
|---------------------------|----------|-------|------------------|------------------|------------------|
| | | PE | \$0 | \$72,094 | \$72,094 |
| 2028 | TMA-STBG | CON | \$483,760 | \$120,940 | \$604,700 |
| | N/A | CON | \$0 | \$116,240 | \$116,240 |
| | | | | | |
| | | | | | |
| Total Project Cost | | | \$483,760 | \$309,274 | \$793,034 |

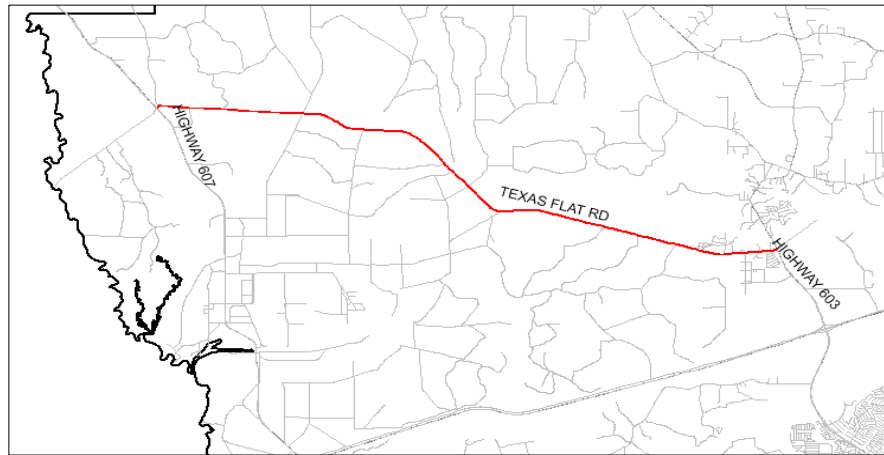
| Project Notes | | | | | |
|---|---|------|-----------|------|-------|
| Action | Add to TIP | Date | 8/1/2020 | Type | Amend |
| Remarks | \$600,000 | | | | |
| Action | Reduce funding | Date | 4/19/2024 | Type | Amend |
| Remarks | Reduce funding by \$116,240 and adding to Beyer project | | | | |
| Action | | Date | | Type | |
| Remarks | | | | | |
| Action | | Date | | Type | |
| Remarks | | | | | |
| Action | | Date | | Type | |
| Remarks | | | | | |
| Action | | Date | | Type | |
| Remarks | | | | | |
| Action | | Date | | Type | |
| Remarks | | | | | |
| *These projects are eligible for Special Match Credit if the LPA chooses to utilize | | | | | |

Mississippi Gulf Coast Metropolitan Planning Organization

FY2025-2028 Transportation Improvement Program (TIP)



| | | | |
|----------------------------|--|---------------|-----------------|
| County | Hancock County | Agency | Hancock County |
| Improvement Type | Multimodal | Route | Texas Flat Road |
| Project Termini | MS 603 to MS 607 | | |
| Project Number | | | |
| Project Description | Repair and level shoulders, installation of micro surface treatment. | | |



| FY | Source | Phase | Federal | Local/Match | Total |
|---------------------------|----------|-------|--------------------|------------------|--------------------|
| | | PE | \$0 | \$90,271 | \$90,271 |
| 2026 | TMA-STBG | CON | \$1,840,567 | \$369,870 | \$2,300,708 |
| | | | | | |
| | | | | | |
| Total Project Cost | | | \$1,840,567 | \$460,141 | \$2,390,979 |

Project Notes

| | | | | | |
|----------------|---|-------------|-----------|-------------|-------|
| Action | Add to TIP | Date | 8/4/2022 | Type | Amend |
| Remarks | \$1,840,567 | | | | |
| Action | Add PE Phase | Date | 8/11/2023 | Type | Mod |
| Remarks | Add PE phase and adjust local match for CON | | | | |
| Action | | Date | | Type | |
| Remarks | | | | | |
| Action | | Date | | Type | |
| Remarks | | | | | |
| Action | | Date | | Type | |
| Remarks | | | | | |
| Action | | Date | | Type | |
| Remarks | | | | | |

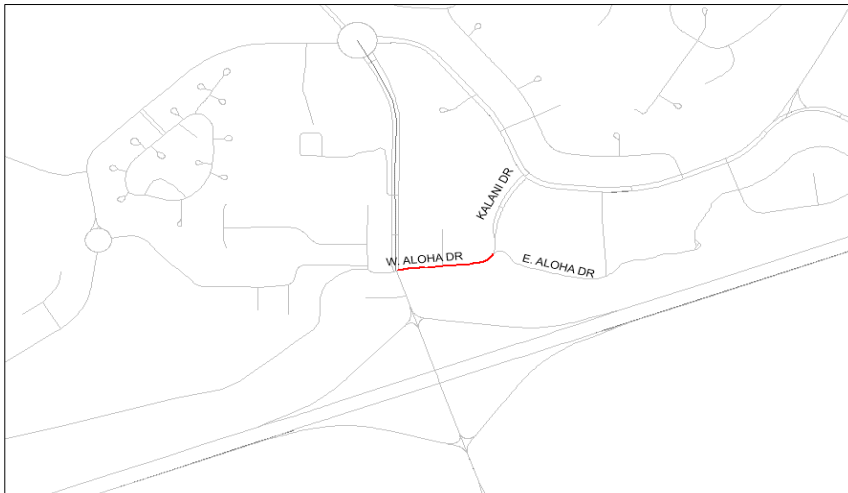
*These projects are eligible for Special Match Credit if the LPA chooses to utilize

Mississippi Gulf Coast Metropolitan Planning Organization

FY2025-2028 Transportation Improvement Program (TIP)



| | | | |
|----------------------------|--|---------------|------------------|
| County | Hancock County | Agency | Diamondhead |
| Improvement Type | Multimodal | Route | West Aloha Drive |
| Project Termini | Gex Drive to Kalani Drive | | |
| Project Number | | | |
| Project Description | Medians, curbing, pavement, sidewalks, pathways. | | |



| FY | Source | Phase | Federal | Local/Match | Total |
|---------------------------|----------|-------|------------------|------------------|--------------------|
| | | PE | \$0 | \$100,000 | \$100,000 |
| 2026 | TMA-STBG | CON | \$800,000 | \$200,000 | \$1,000,000 |
| | | | | | |
| | | | | | |
| Total Project Cost | | | \$800,000 | \$300,000 | \$1,100,000 |

Project Notes

| | | | | | |
|----------------|------------|-------------|----------|-------------|-------|
| Action | Add to TIP | Date | 8/4/2022 | Type | Amend |
| Remarks | \$800,000 | | | | |
| Action | | Date | | Type | |
| Remarks | | | | | |
| Action | | Date | | Type | |
| Remarks | | | | | |
| Action | | Date | | Type | |
| Remarks | | | | | |
| Action | | Date | | Type | |
| Remarks | | | | | |
| Action | | Date | | Type | |
| Remarks | | | | | |

*These projects are eligible for Special Match Credit if the LPA chooses to utilize

Mississippi Gulf Coast Metropolitan Planning Organization

FY2025-2028 Transportation Improvement Program (TIP)



| | | | |
|----------------------------|--|---------------|-------------------|
| County | Hancock County | Agency | Hancock County |
| Improvement Type | Multimodal | Route | Kiln-Delisle Road |
| Project Termini | Hancock County Arena | | |
| Project Number | | | |
| Project Description | Construct new turn lanes for both eastbound and westbound traffic to provide safer access into the Hancock County Arena. Also, construct a right turn lane into East Hancock Elementary School. This project will also include drainage improvements to accommodate the new roadway width. | | |



| Project Notes | | | | | |
|---|-------------|------|----------|------|-------|
| Action | Add to TIP | Date | 8/8/2024 | Type | Amend |
| Remarks | \$1,160,000 | | | | |
| Action | | Date | | Type | |
| Remarks | | | | | |
| Action | | Date | | Type | |
| Remarks | | | | | |
| Action | | Date | | Type | |
| Remarks | | | | | |
| Action | | Date | | Type | |
| Remarks | | | | | |
| Action | | Date | | Type | |
| Remarks | | | | | |
| Action | | Date | | Type | |
| Remarks | | | | | |
| *These projects are eligible for Special Match Credit if the LPA chooses to utilize | | | | | |

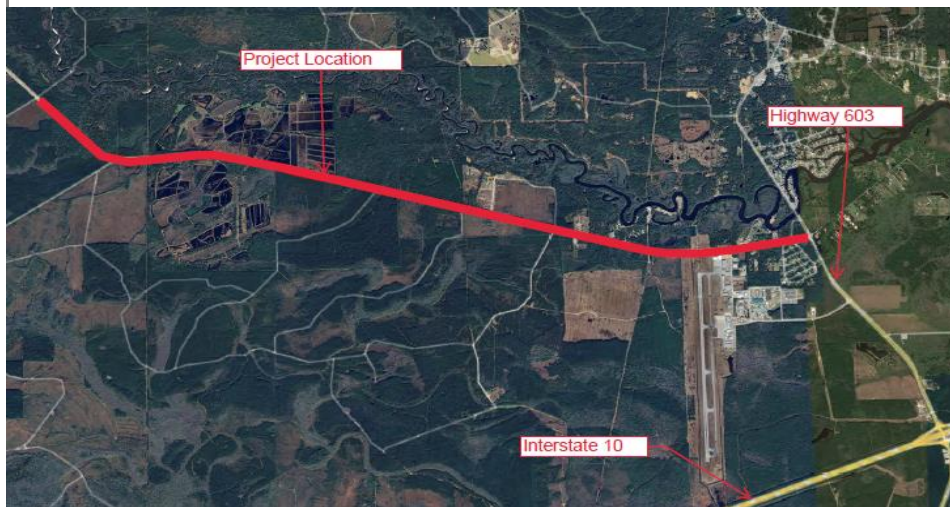
| FY | Source | Phase | Federal | Local/Match | Total |
|---------------------------|----------|-------|--------------------|------------------|--------------------|
| | | PE | \$0 | \$145,000 | \$145,000 |
| | | ROW | \$0 | \$100,000 | \$100,000 |
| 2028 | TMA-STBG | CON | \$1,160,000 | \$290,000 | \$1,450,000 |
| | | | | | |
| | | | | | |
| Total Project Cost | | | \$1,160,000 | \$535,000 | \$1,695,000 |

Mississippi Gulf Coast Metropolitan Planning Organization

FY2025-2028 Transportation Improvement Program (TIP)



| | | | |
|----------------------------|---|---------------|---------------------|
| County | Hancock County | Agency | Hancock County |
| Improvement Type | Multimodal | Route | Texas Flat Road PH2 |
| Project Termini | MS 603 to MS 607 | | |
| Project Number | | | |
| Project Description | Install rumble strips and a 2' safety shoulder in each direction to increase travel safety along this route. Provide shoulder stabilization to reduce the amount of embankment erosion. Increase the PASER rating by completing base repairs. Striping of roadway to increase lane delineation. | | |



| FY | Source | Phase | Federal | Local/Match | Total |
|---------------------------|----------|-------|--------------------|------------------|--------------------|
| | | PE | \$0 | \$187,800 | \$187,800 |
| 2028 | TMA-STBG | CON | \$1,502,400 | \$375,600 | \$1,878,000 |
| | | | | | |
| | | | | | |
| Total Project Cost | | | \$1,502,400 | \$563,400 | \$2,065,800 |

| Project Notes | | | | | |
|---|-------------|------|----------|------|-------|
| Action | Add to TIP | Date | 8/8/2024 | Type | Amend |
| Remarks | \$1,502,400 | | | | |
| Action | | Date | | Type | |
| Remarks | | | | | |
| Action | | Date | | Type | |
| Remarks | | | | | |
| Action | | Date | | Type | |
| Remarks | | | | | |
| Action | | Date | | Type | |
| Remarks | | | | | |
| Action | | Date | | Type | |
| Remarks | | | | | |
| Action | | Date | | Type | |
| Remarks | | | | | |
| *These projects are eligible for Special Match Credit if the LPA chooses to utilize | | | | | |

Mississippi Gulf Coast Metropolitan Planning Organization

FY2025-2028 Transportation Improvement Program (TIP)



| | | | |
|----------------------------|---------------------------------------|---------------|---------------------|
| County | Hancock County | Agency | Hancock County |
| Improvement Type | Multimodal | Route | Lakeshore Road PH 2 |
| Project Termini | CSX railroad to South Beach Boulevard | | |
| Project Number | | | |
| Project Description | PH2 Reconstruction | | |



| FY | Source | Phase | Federal | Local/Match | Total |
|---------------------------|----------|-------|------------------|------------------|------------------|
| | | PE | \$0 | \$50,000 | \$50,000 |
| 2028 | TMA-STBG | CON | \$715,200 | \$178,800 | \$894,000 |
| | | | | | |
| | | | | | |
| Total Project Cost | | | \$715,200 | \$228,800 | \$944,000 |

Project Notes

| | | | | | |
|----------------|------------|-------------|----------|-------------|-------|
| Action | Add to TIP | Date | 8/8/2024 | Type | Amend |
| Remarks | \$715,200 | | | | |
| Action | | Date | | Type | |
| Remarks | | | | | |
| Action | | Date | | Type | |
| Remarks | | | | | |
| Action | | Date | | Type | |
| Remarks | | | | | |
| Action | | Date | | Type | |
| Remarks | | | | | |
| Action | | Date | | Type | |
| Remarks | | | | | |

| | |
|-------------------------------|--|
| Special Match Credit ? | |
|-------------------------------|--|

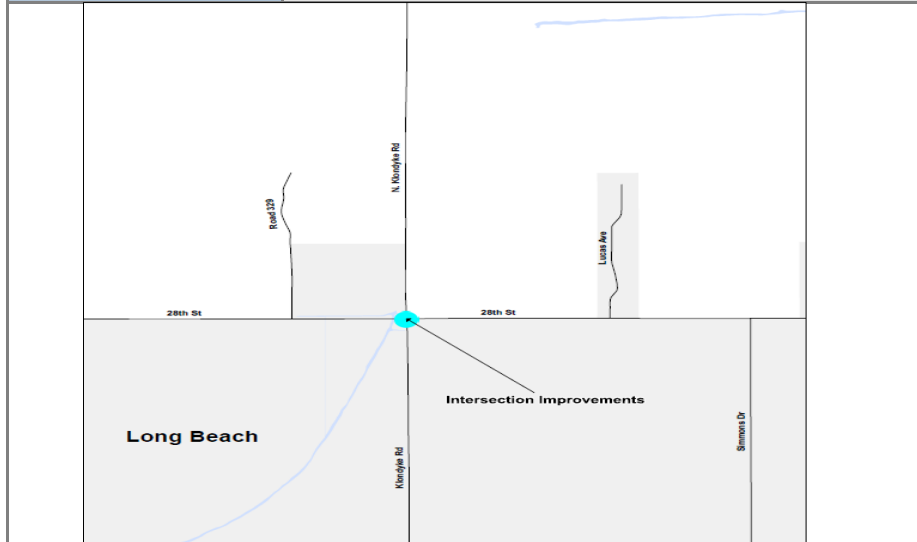
Harrison County

Mississippi Gulf Coast Metropolitan Planning Organization

FY2025-2028 Transportation Improvement Program (TIP)



| | | | |
|----------------------------|---|---------------|-------------|
| County | Harrison | Agency | Long Beach |
| Improvement Type | Intersection | Route | 28th Street |
| Project Termini | 28th Street - at Klondyke Road | | |
| Project Number | | | |
| Project Description | Project is to improve the intersection of 28th Street and Klondyke Road. A determination of improvements to signalization, additional turn lanes and the consideration of a roundabout. | | |



| FY | Source | Phase | Federal | Local/Match | Total |
|---------------------------|----------|-------|------------------|------------------|--------------------|
| 2025 | | PE | \$0 | \$100,000 | \$100,000 |
| 2025 | | ROW | \$0 | \$100,000 | \$100,000 |
| 2025 | TMA-STBG | CON | \$800,000 | \$200,000 | \$1,000,000 |
| | | | | | |
| | | | | | |
| Total Project Cost | | | \$800,000 | \$400,000 | \$1,200,000 |

Project Notes

| | | | | | |
|---------|------------|------|----------|------|-------|
| Action | Add to TIP | Date | 8/1/2020 | Type | Amend |
| Remarks | \$800,000 | | | | |
| Action | | Date | | Type | |
| Remarks | | | | | |
| Action | | Date | | Type | |
| Remarks | | | | | |
| Action | | Date | | Type | |
| Remarks | | | | | |
| Action | | Date | | Type | |
| Remarks | | | | | |
| Action | | Date | | Type | |
| Remarks | | | | | |

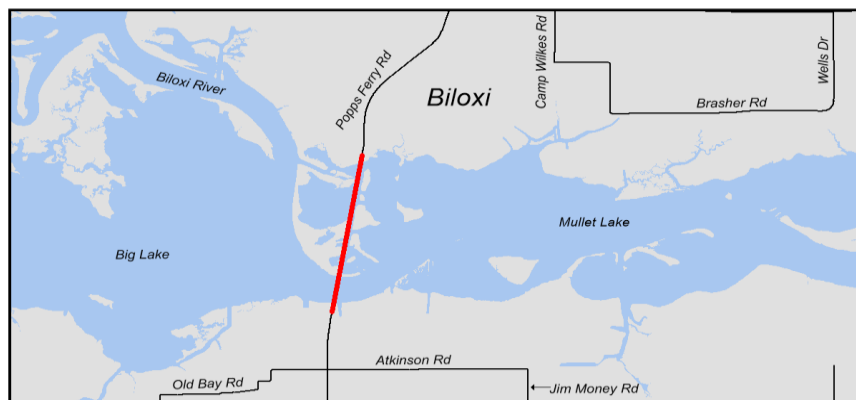
*These projects are eligible for Special Match Credit if the LPA chooses to utilize

Mississippi Gulf Coast Metropolitan Planning Organization

FY2025-2028 Transportation Improvement Program (TIP)



| | | | | |
|----------------------------|---|---------------|------------------|--|
| County | Harrison | Agency | Biloxi | |
| Improvement Type | Multimodal | Route | Poppa Ferry Road | |
| Project Termini | .3 miles of bridge | | | |
| Project Number | | | | |
| Project Description | Replace the existing Poppa Ferry bridge | | | |



| FY | Source | Phase | Federal | Local/Match | Total |
|---------------------------|---------|-------|---------------------|--------------------|---------------------|
| Illustrative | Earmark | PE | \$0 | \$100,000 | \$100,000 |
| Illustrative | Earmark | ENV | \$4,000,000 | \$1,000,000 | \$5,000,000 |
| Illustrative | Earmark | CON | \$8,000,000 | \$2,000,000 | \$10,000,000 |
| | | | | | |
| | | | | | |
| | | | | | |
| | | | | | |
| | | | | | |
| Total Project Cost | | | \$12,000,000 | \$3,100,000 | \$15,100,000 |

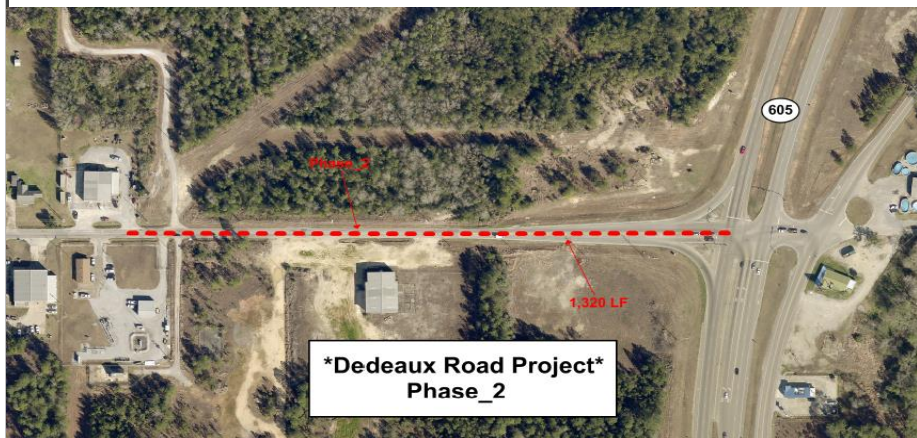
| Project Notes | | | | | |
|---------------|--|------|-----------|------|-------|
| Action | Add to TIP | Date | 5/21/2009 | Type | Amend |
| Remarks | \$4,000,000 Earmark Funds (Environmental Phase) | | | | |
| Action | Change year | Date | 10/1/2012 | Type | Mod |
| Remarks | Move ENV from FY12 to FY13 | | | | |
| Action | Add Funds | Date | 9/13/2013 | Type | Amend |
| Remarks | Add \$8,000,000 Earmark Funds (Construction Phase) | | | | |
| Action | Review | Date | 8/31/2017 | Type | N/A |
| Remarks | No CON yr assigned - MPO illustrative List | | | | |
| Action | | Date | | Type | |
| Remarks | | | | | |
| Action | | Date | | Type | |
| Remarks | | | | | |
| Action | | Date | | Type | |
| Remarks | | | | | |
| Action | | Date | | Type | |
| Remarks | | | | | |

Mississippi Gulf Coast Metropolitan Planning Organization

FY2025-2028 Transportation Improvement Program (TIP)



| | | | |
|----------------------------|---|---------------|----------------------|
| County | Harrison | Agency | Gulfport |
| Improvement Type | Multimodal | Route | Dedeaux Road Phase 2 |
| Project Termini | Hwy 605 to 1/4 mile West of Hwy 605 | | |
| Project Number | | | |
| Project Description | Widening and adding bike/ped facilities | | |



| FY | Source | Phase | Federal | Local/Match | Total |
|---------------------------|------------|-------|--------------------|------------------|--------------------|
| | | PE | \$0 | \$100,000 | \$100,000 |
| | | ENV | \$0 | \$15,000 | \$15,000 |
| | | ROW | \$0 | \$50,000 | \$50,000 |
| 2025 | TMA - STBG | CON | \$3,760,000 | \$775,000 | \$4,535,000 |
| | | | | | |
| | | | | | |
| | | | | | |
| Total Project Cost | | | \$3,760,000 | \$940,000 | \$4,700,000 |

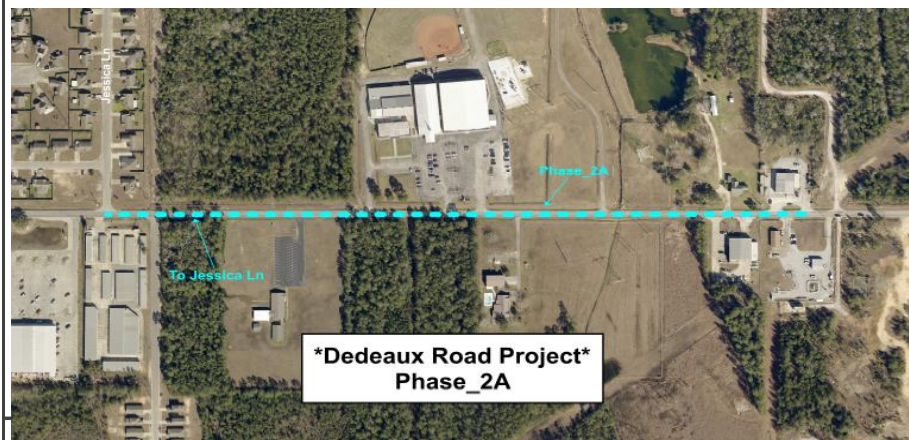
| Project Notes | | | | | |
|---|--|------|-----------|------|-------|
| Action | Add to TIP | Date | 8/23/2018 | Type | Amend |
| Remarks | \$3,760,000 added to Illustrative List | | | | |
| Action | Split project | Date | 12/8/2022 | Type | Amend |
| Remarks | Phase 2 and Phase 2a split at 1/4 mile east of Hwy 605 | | | | |
| Action | | Date | | Type | |
| Remarks | | | | | |
| Action | | Date | | Type | |
| Remarks | | | | | |
| Action | | Date | | Type | |
| Remarks | | | | | |
| Action | | Date | | Type | |
| Remarks | | | | | |
| Action | | Date | | Type | |
| Remarks | | | | | |
| Action | | Date | | Type | |
| Remarks | | | | | |
| *These projects are eligible for Special Match Credit if the LPA chooses to utilize | | | | | |

Mississippi Gulf Coast Metropolitan Planning Organization

FY2025-2028 Transportation Improvement Program (TIP)



| | | | |
|----------------------------|---|---------------|-----------------------|
| County | Harrison | Agency | Gulfport |
| Improvement Type | Multimodal | Route | Dedeaux Road Phase 2a |
| Project Termini | Jessica Drive to 1/4 mile West of Hwy 605 | | |
| Project Number | | | |
| Project Description | Widening and adding bike/ped facilities | | |



| FY | Source | Phase | Federal | Local/Match | Total |
|---------------------------|--------|-------|------------|--------------------|--------------------|
| Illustrative | | PE | \$0 | \$800,000 | \$800,000 |
| Illustrative | | ENV | \$0 | \$15,000 | \$15,000 |
| Illustrative | | ROW | \$0 | \$750,000 | \$750,000 |
| Illustrative | | CON | \$0 | \$800,000 | \$8,000,000 |
| | | | | | |
| | | | | | |
| Total Project Cost | | | \$0 | \$2,365,000 | \$9,565,000 |

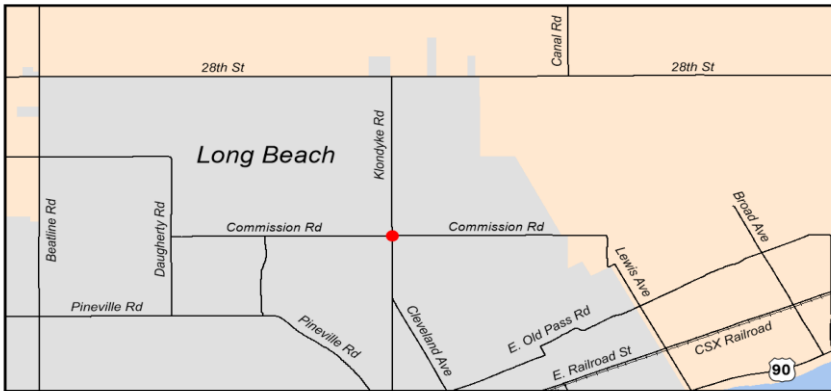
| Project Notes | | | | | |
|---|--|------|-----------|------|-------|
| Action | Add to TIP | Date | 8/23/2018 | Type | Amend |
| Remarks | \$3,760,000 added to Illustrative List | | | | |
| Action | Split project | Date | 12/8/2022 | Type | Amend |
| Remarks | Phase 2 and Phase 2a split at 1/4 mile east of Hwy 605 | | | | |
| Action | | Date | | Type | |
| Remarks | | | | | |
| Action | | Date | | Type | |
| Remarks | | | | | |
| Action | | Date | | Type | |
| Remarks | | | | | |
| Action | | Date | | Type | |
| Remarks | | | | | |
| Action | | Date | | Type | |
| Remarks | | | | | |
| *These projects are eligible for Special Match Credit if the LPA chooses to utilize | | | | | |

Mississippi Gulf Coast Metropolitan Planning Organization

FY2025-2028 Transportation Improvement Program (TIP)



| | | | |
|----------------------------|--|---------------|---------------|
| County | Harrison | Agency | Long Beach |
| Improvement Type | Intersection | Route | Klondyke Road |
| Project Termini | Commision Road | | |
| Project Number | | | |
| Project Description | Intersection improvements including sidewalk connectivity and crosswalks | | |



| Project Notes | | | | | |
|---|--|------|------------|------|-------|
| Action | Add to TIP | Date | 8/23/2018 | Type | Amend |
| Remarks | \$760,000 STBG | | | | |
| Action | | Date | 2/1/2022 | Type | MOD |
| Remarks | Modification for PE and ROW for special match credit | | | | |
| Action | Change FY | Date | 11/14/2022 | Type | MOD |
| Remarks | Move from FY 2022 to 2023 | | | | |
| Action | Increase funding | Date | 3/27/2024 | Type | Amend |
| Remarks | Add \$325,000 STBG. \$760,000 to \$1,085,000 | | | | |
| Action | Move FY | Date | 3/27/2024 | Type | Mod |
| Remarks | Move from FY 23 to FY 25 | | | | |
| Action | | Date | | Type | |
| Remarks | | | | | |
| Action | | Date | | Type | |
| Remarks | | | | | |
| Action | | Date | | Type | |
| Remarks | | | | | |
| *These projects are eligible for Special Match Credit if the LPA chooses to utilize | | | | | |

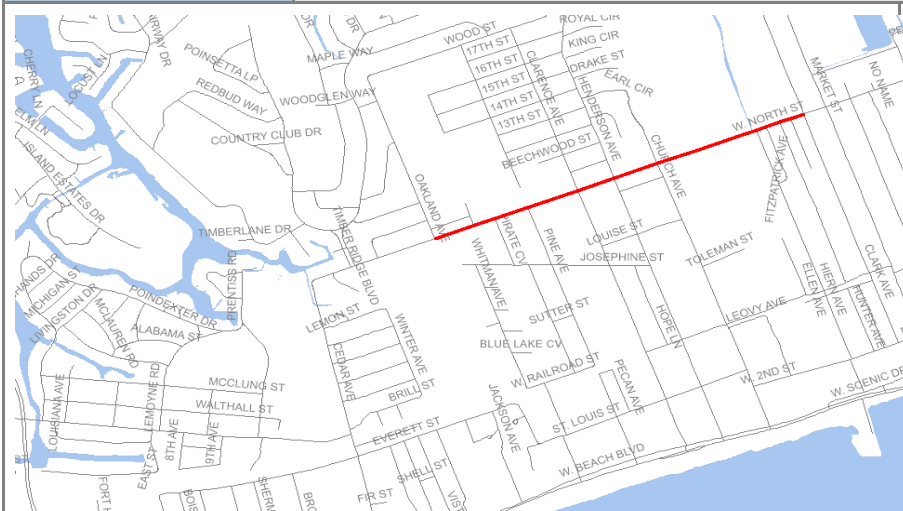
| FY | Source | Phase | Federal | Local/Match | Total |
|---------------------------|----------|-------|--------------------|------------------|--------------------|
| | | PE | \$0 | \$166,621 | \$166,621 |
| 2025 | TMA-STBG | CON | \$1,085,000 | \$271,250 | \$1,356,250 |
| 2025 | | ROW | \$0 | \$75,000 | \$75,000 |
| 2025 | | Other | \$0 | \$25,000 | \$25,000 |
| | | | | | |
| | | | | | |
| | | | | | |
| | | | | | |
| | | | | | |
| Total Project Cost | | | \$1,085,000 | \$537,871 | \$1,622,871 |

Mississippi Gulf Coast Metropolitan Planning Organization

FY2025-2028 Transportation Improvement Program (TIP)



| | | | |
|----------------------------|--|---------------|----------------|
| County | Harrison | Agency | Pass Christian |
| Improvement Type | Bike/Ped | Route | North Street |
| Project Termini | High School to Pass Estates | | |
| Project Number | | | |
| Project Description | Sidewalks providing safe access for students to school | | |

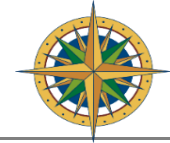


| Project Notes | | | | | |
|---|---|------|------------|------|-------|
| Action | Add to TIP | Date | 6/25/2015 | Type | Amend |
| Remarks | | | | | |
| Action | Move FY | Date | 3/30/2022 | Type | Mod |
| Remarks | Move from 2021 to 2022 | | | | |
| Action | Change FY | Date | 11/10/2022 | Type | Mod |
| Remarks | Move from FY 2022 to FY 2023 | | | | |
| Action | 20 % cost increase | Date | 11/20/2023 | Type | Mod |
| Remarks | Cost increase: Add \$90,560 from \$452,800 to \$543,360 | | | | |
| Action | Change FY | Date | 11/20/2023 | Type | Mod |
| Remarks | Move from FY 2023 to FY 2024 | | | | |
| Action | | Date | | Type | |
| Remarks | | | | | |
| Action | | Date | | Type | |
| Remarks | | | | | |
| Action | | Date | | Type | |
| Remarks | | | | | |
| *These projects are eligible for Special Match Credit if the LPA chooses to utilize | | | | | |

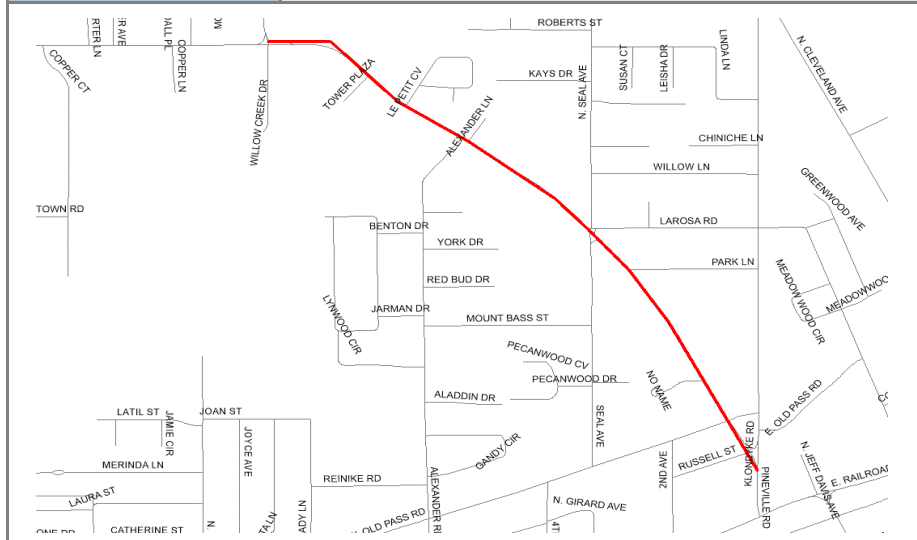
| FY | Source | Phase | Federal | Local/Match | Total |
|---------------------------|----------|-------|------------------|------------------|------------------|
| | | PE | \$0 | \$51,700 | \$51,700 |
| | | ROW | \$0 | \$100,000 | \$100,000 |
| 2025 | TMA-STBG | CON | \$543,360 | \$135,840 | \$679,200 |
| | | | | | |
| | | | | | |
| Total Project Cost | | | \$543,360 | \$287,540 | \$830,900 |

Mississippi Gulf Coast Metropolitan Planning Organization

FY2025-2028 Transportation Improvement Program (TIP)



| | | | |
|----------------------------|-----------------------------------|---------------|----------------------|
| County | Harrison | Agency | Long Beach |
| Improvement Type | Bike/Ped | Route | Pineville Road PH II |
| Project Termini | Harper McCaughan to Klondyke Road | | |
| Project Number | | | |
| Project Description | Pedestrian access and safety | | |



| FY | Source | Phase | Federal | Local/Match | Total |
|---------------------------|----------|-------|------------------|------------------|--------------------|
| | | PE | \$0 | \$97,300 | \$97,300 |
| | | ROW | \$0 | \$50,000 | \$50,000 |
| 2025 | TMA-CRP | CON | \$480,000 | \$120,000 | \$600,000 |
| 2025 | TMA-STBG | CON | \$298,400 | \$74,600 | \$373,000 |
| Total Project Cost | | | \$778,400 | \$341,900 | \$1,120,300 |

Project Notes

| Action | Add to TIP | Date | Type |
|---------|--|-----------|-------|
| | | 8/23/2020 | Amend |
| Remarks | | | |
| Action | Change funding source | Date | Type |
| | | 10/6/2022 | Mod |
| Remarks | Change from TMA-STBG to Carbon Reduction Program | | |
| Action | Increase funding | Date | Type |
| | | 10/6/2022 | Mod |
| Remarks | Increase funding by 20% | | |
| Action | Add funding | Date | Type |
| | | 8/8/2024 | Amend |
| Remarks | \$298,400 | | |
| Action | | Date | Type |
| | | | |
| Remarks | | | |
| Action | | Date | Type |
| | | | |
| Remarks | | | |
| Action | | Date | Type |
| | | | |
| Remarks | | | |

*These projects are eligible for Special Match Credit if the LPA chooses to utilize

Mississippi Gulf Coast Metropolitan Planning Organization

FY2025-2028 Transportation Improvement Program (TIP)



| | | | |
|----------------------------|---|---------------|--------------|
| County | Harrison | Agency | D' Iberville |
| Improvement Type | Intersection | Route | Brodie Road |
| Project Termini | Brodie Road – at Automall Parkway | | |
| Project Number | | | |
| Project Description | Project will improve traffic flow at the Brodie Road/Automall Parkway intersection with a roundabout. Project Purpose: Traffic flow | | |



| FY | Source | Phase | Federal | Local/Match | Total |
|---------------------------|----------|-------|------------------|------------------|------------------|
| | | PE | \$0 | \$54,000 | \$54,000 |
| | | ROW | \$0 | \$50,000 | \$50,000 |
| 2026 | TMA-STBG | CON | \$432,000 | \$108,000 | \$540,000 |
| | | | | | |
| Total Project Cost | | | \$432,000 | \$212,000 | \$644,000 |

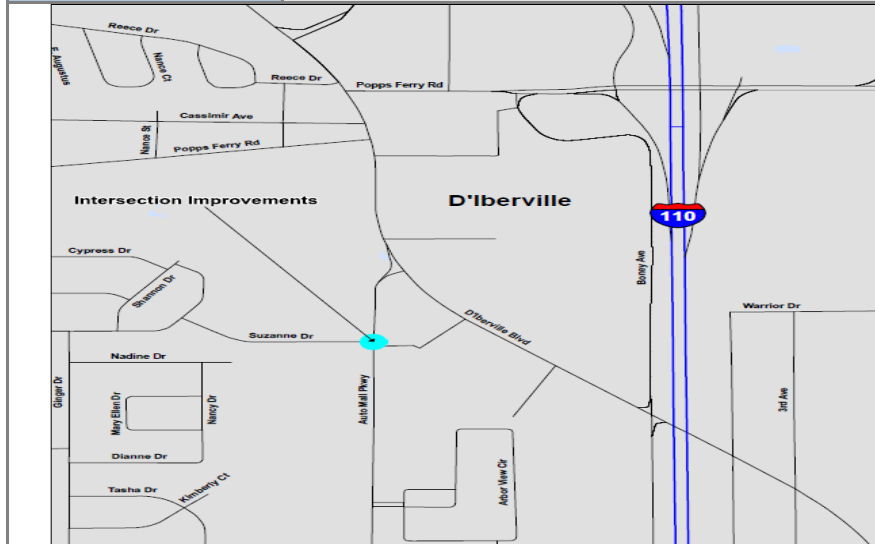
| Project Notes | | | | | |
|---|------------|------|----------|------|-------|
| Action | Add to TIP | Date | 8/1/2020 | Type | Amend |
| Remarks | \$432,000 | | | | |
| Action | | Date | | Type | |
| Remarks | | | | | |
| Action | | Date | | Type | |
| Remarks | | | | | |
| Action | | Date | | Type | |
| Remarks | | | | | |
| Action | | Date | | Type | |
| Remarks | | | | | |
| Action | | Date | | Type | |
| Remarks | | | | | |
| Action | | Date | | Type | |
| Remarks | | | | | |
| *These projects are eligible for Special Match Credit if the LPA chooses to utilize | | | | | |

Mississippi Gulf Coast Metropolitan Planning Organization

FY2025-2028 Transportation Improvement Program (TIP)



| | | | |
|----------------------------|---|---------------|---------------|
| County | Harrison | Agency | Diberville |
| Improvement Type | Intersection | Route | Suzanne Drive |
| Project Termini | Suzanne Drive – at Automall Parkway | | |
| Project Number | | | |
| Project Description | Project will realign intersection from its current offset condition allowing east and west bound traffic to flow concurrently. Project Purpose: Traffic flow | | |



| FY | Source | Phase | Federal | Local/Match | Total |
|---------------------------|----------|-------|------------------|------------------|------------------|
| | | PE | \$0 | \$108,131 | \$108,131 |
| | | ROW | \$0 | \$50,000 | \$50,000 |
| 2025 | TMA-STBG | CON | \$480,000 | \$120,000 | \$600,000 |
| | | | | | |
| Total Project Cost | | | \$480,000 | \$278,131 | \$758,131 |

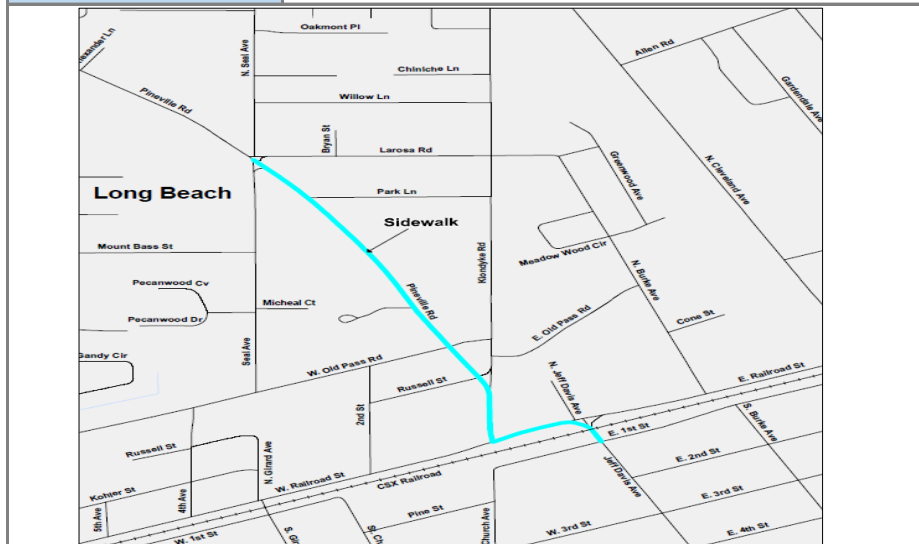
| Project Notes | | | | | |
|---|-----------------------------------|------|----------|------|-------|
| Action | Add to TIP | Date | 8/1/2020 | Type | Amend |
| Remarks | \$480,000 | | | | |
| Action | Add Phases | Date | 6/2/2023 | Type | Mod |
| Remarks | Added PE for special match credit | | | | |
| Action | | Date | | Type | |
| Remarks | | | | | |
| Action | | Date | | Type | |
| Remarks | | | | | |
| Action | | Date | | Type | |
| Remarks | | | | | |
| Action | | Date | | Type | |
| Remarks | | | | | |
| Action | | Date | | Type | |
| Remarks | | | | | |
| *These projects are eligible for Special Match Credit if the LPA chooses to utilize | | | | | |

Mississippi Gulf Coast Metropolitan Planning Organization

FY2025-2028 Transportation Improvement Program (TIP)



| | | | |
|----------------------------|---|---------------|-----------------------------|
| County | Harrison | Agency | Long Beach |
| Improvement Type | Bike/Ped | Route | Pineville Road PH III |
| Project Termini | Seal Avenue to Railroad Street | | |
| Project Number | | | |
| Project Description | Continuation of previous projects on Pineville Road to connect to sidewalks on Jeff Davis Avenue. | | Project Length: .71 mile |



| FY | Source | Phase | Federal | Local/Match | Total |
|---------------------------|----------|-------|------------------|------------------|--------------------|
| | | PE | \$0 | \$101,472 | \$101,472 |
| | | ROW | \$0 | \$100,000 | \$100,000 |
| 2027 | TMA-STBG | CON | \$811,776 | \$202,944 | \$1,014,720 |
| | | | | | |
| | | | | | |
| Total Project Cost | | | \$811,776 | \$404,416 | \$1,216,192 |

Project Notes

| | | | | | |
|---------|---------------|------|----------|------|-------|
| Action | Add to TIP | Date | 8/1/2020 | Type | Amend |
| Remarks | \$600,000 | | | | |
| Action | Cost increase | Date | 8/8/2024 | Type | Amend |
| Remarks | \$211,776 | | | | |
| Action | | Date | | Type | |
| Remarks | | | | | |
| Action | | Date | | Type | |
| Remarks | | | | | |
| Action | | Date | | Type | |
| Remarks | | | | | |
| Action | | Date | | Type | |
| Remarks | | | | | |
| Action | | Date | | Type | |
| Remarks | | | | | |

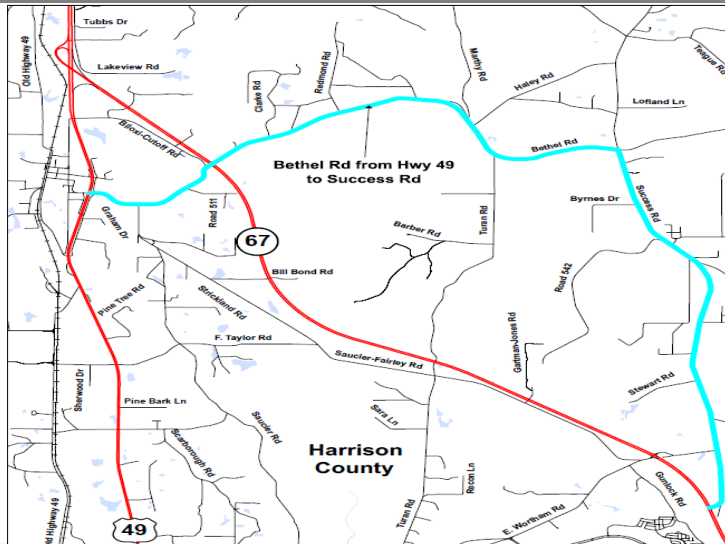
*These projects are eligible for Special Match Credit if the LPA chooses to utilize

Mississippi Gulf Coast Metropolitan Planning Organization

FY2025-2028 Transportation Improvement Program (TIP)



| | | | |
|----------------------------|---|---------------|--------------------------|
| County | Harrison | Agency | Harrison |
| Improvement Type | Multimodal | Route | Bethel Road/Success Road |
| Project Termini | Bethel Road – US 49 to Success Road /Success Road – Bethel Road to Hwy 67 | | |
| Project Number | | | |
| Project Description | Chip seal, fog seal, base and edge repairs, shoulder material, striping and pavement signs. Project Length: 9.5 miles | | |



| FY | Source | Phase | Federal | Local/Match | Total |
|---------------------------|----------|-------|------------------|------------------|------------------|
| | | PE | \$0 | \$50,000 | \$50,000 |
| 2025 | TMA-STBG | CON | \$471,200 | \$117,800 | \$589,000 |
| | | | | | |
| | | | | | |
| Total Project Cost | | | \$471,200 | \$167,800 | \$639,000 |

| Project Notes | | | | | |
|---|------------|------|----------|------|-------|
| Action | Add to TIP | Date | 8/1/2020 | Type | Amend |
| Remarks | \$471,200 | | | | |
| Action | | Date | | Type | |
| Remarks | | | | | |
| Action | | Date | | Type | |
| Remarks | | | | | |
| Action | | Date | | Type | |
| Remarks | | | | | |
| Action | | Date | | Type | |
| Remarks | | | | | |
| Action | | Date | | Type | |
| Remarks | | | | | |
| Action | | Date | | Type | |
| Remarks | | | | | |
| *These projects are eligible for Special Match Credit if the LPA chooses to utilize | | | | | |

Mississippi Gulf Coast Metropolitan Planning Organization

FY2025-2028 Transportation Improvement Program (TIP)



| | | | | |
|----------------------------|-------------------------------------|---------------|-----------|--|
| County | Harrison | Agency | Biloxi | |
| Improvement Type | Intersection | Route | Pass Road | |
| Project Termini | at Rodenburg Avenue | | | |
| Project Number | | | | |
| Project Description | Upgrade intersection, add mast arms | | | |



| FY | Source | Phase | Federal | Local/Match | Total |
|---------------------------|---------|-------|------------------|------------------|------------------|
| | | PE | \$0 | \$63,070 | \$63,070 |
| | | ROW | \$0 | \$50,000 | \$50,000 |
| 2025 | TMA-CRP | CON | \$504,560 | \$126,140 | \$630,700 |
| | | | | | |
| Total Project Cost | | | \$504,560 | \$239,210 | \$743,770 |

Project Notes

| | | | | | |
|----------------|--|-------------|------------|-------------|-------|
| Action | Add to TIP | Date | 10/31/2021 | Type | Amend |
| Remarks | New project - \$504,560 HIP | | | | |
| Action | Funding swap | Date | 6/26/2023 | Type | Mod |
| Remarks | Changed funding source from HIP to CRP \$504,560 | | | | |
| Action | | Date | | Type | |
| Remarks | | | | | |
| Action | | Date | | Type | |
| Remarks | | | | | |
| Action | | Date | | Type | |
| Remarks | | | | | |
| Action | | Date | | Type | |
| Remarks | | | | | |

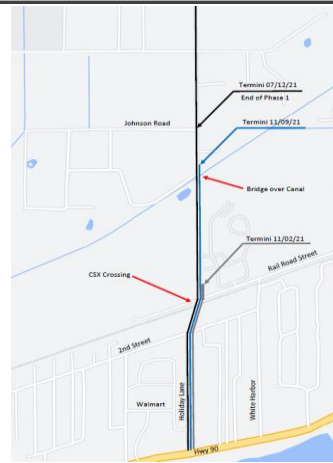
*These projects are eligible for Special Match Credit if the LPA chooses to utilize

Mississippi Gulf Coast Metropolitan Planning Organization

FY2025-2028 Transportation Improvement Program (TIP)



| | | | |
|----------------------------|--|---------------|------------------|
| County | Harrison | Agency | Long Beach |
| Improvement Type | New construction | Route | Beatline Parkway |
| Project Termini | US 90 to Johnson Road | | |
| Project Number | | | |
| Project Description | The project will connect US 90 to Beatline Road by constructing a five-lane roadway with multiuse pathway. | | |



| FY | Source | Phase | Federal | Local/Match | Total |
|---------------------------|--------|----------|---------------------|--------------------|---------------------|
| 2025 | RAISE | PE | \$2,000,808 | \$500,202 | \$2,501,010 |
| 2025 | RAISE | ROW | \$1,320,000 | \$330,000 | \$1,650,000 |
| 2025 | RAISE | Railroad | \$1,012,000 | \$253,000 | \$1,265,000 |
| 2025 | RAISE | CON | \$12,475,632 | \$3,118,908 | \$15,594,540 |
| Total Project Cost | | | \$16,808,440 | \$4,202,110 | \$21,010,550 |

| Project Notes | | | | | |
|---|------------|------|-----------|------|-------|
| Action | Add to TIP | Date | 2/24/2022 | Type | Amend |
| Remarks | | | | | |
| Action | | Date | | Type | |
| Remarks | | | | | |
| Action | | Date | | Type | |
| Remarks | | | | | |
| Action | | Date | | Type | |
| Remarks | | | | | |
| Action | | Date | | Type | |
| Remarks | | | | | |
| Action | | Date | | Type | |
| Remarks | | | | | |
| *These projects are eligible for Special Match Credit if the LPA chooses to utilize | | | | | |

Mississippi Gulf Coast Metropolitan Planning Organization

FY2025-2028 Transportation Improvement Program (TIP)



| | | | | |
|----------------------------|---|---------------|-----------|--|
| County | Harrison County | Agency | Biloxi | |
| Improvement Type | Intersection | Route | Pass Road | |
| Project Termini | Iberville Drive | | | |
| Project Number | | | | |
| Project Description | Project replaces old hanging traffic signals with new storm resistant mast arm traffic signals. Includes new pedesrian crossings. | | | |



| FY | Source | Phase | Federal | Local/Match | Total |
|---------------------------|---------|-------|------------------|------------------|------------------|
| | | PE | \$0 | \$30,500 | \$30,500 |
| | | ROW | \$0 | \$20,000 | \$20,000 |
| 2026 | TMA-CRP | CON | \$430,560 | \$107,640 | \$538,200 |
| | | | | | |
| | | | | | |
| Total Project Cost | | | \$430,560 | \$158,140 | \$588,700 |

| Project Notes | | | | | |
|---|---|------|-----------|------|-------|
| Action | Add to TIP | Date | 8/4/2022 | Type | Amend |
| Remarks | \$430,560 | | | | |
| Action | Funding swap | Date | 6/27/2023 | Type | Mod |
| Remarks | Change funding source from HIP to CRP - \$430,560 | | | | |
| Action | | Date | | Type | |
| Remarks | | | | | |
| Action | | Date | | Type | |
| Remarks | | | | | |
| Action | | Date | | Type | |
| Remarks | | | | | |
| Action | | Date | | Type | |
| Remarks | | | | | |
| Action | | Date | | Type | |
| Remarks | | | | | |
| *These projects are eligible for Special Match Credit if the LPA chooses to utilize | | | | | |

Mississippi Gulf Coast Metropolitan Planning Organization

FY2023-2026 Transportation Improvement Program (TIP)



| | | | | |
|----------------------------|---|---------------|-----------|--|
| County | Harrison County | Agency | Biloxi | |
| Improvement Type | Intersection | Route | Pass Road | |
| Project Termini | McDonnell Avenue | | | |
| Project Number | | | | |
| Project Description | Project replaces old hanging traffic signals with new storm resistant mast arm traffic signals. Includes new pedesrian crossings. | | | |



| FY | Source | Phase | Federal | Local/Match | Total |
|---------------------------|--------|-------|------------|------------------|------------------|
| | | PE | \$0 | \$33,300 | \$33,300 |
| | | ROW | \$0 | \$40,000 | \$40,000 |
| Illustrative | N/A | CON | \$0 | \$122,180 | \$610,900 |
| | | | | | |
| | | | | | |
| Total Project Cost | | | \$0 | \$195,480 | \$684,200 |

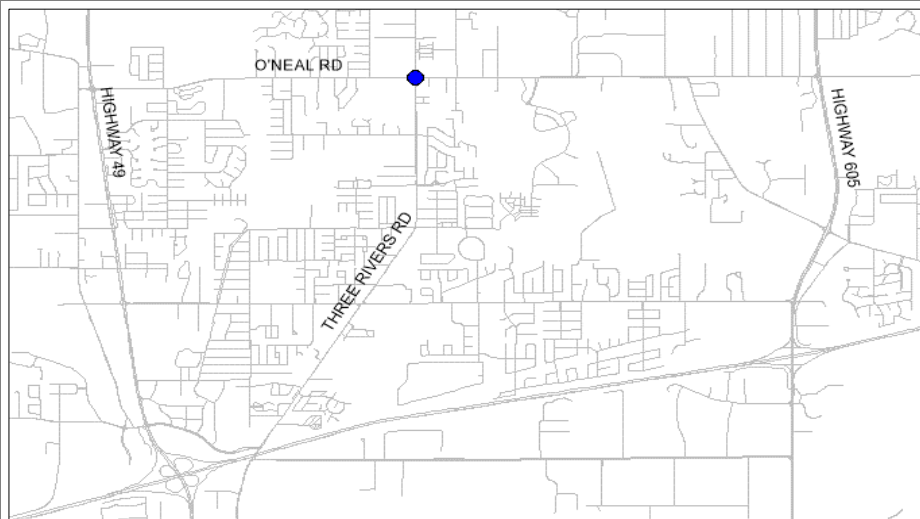
| Project Notes | | | | | |
|---|--|------|-----------|------|-------|
| Action | Add to TIP | Date | 8/4/2022 | Type | Amend |
| Remarks | \$488,720 | | | | |
| Action | Deallocate funding | Date | 10/3/2023 | Type | Amend |
| Remarks | At City's request, deallocate and move to illustrative | | | | |
| Action | | Date | | Type | |
| Remarks | | | | | |
| Action | | Date | | Type | |
| Remarks | | | | | |
| Action | | Date | | Type | |
| Remarks | | | | | |
| Action | | Date | | Type | |
| Remarks | | | | | |
| Action | | Date | | Type | |
| Remarks | | | | | |
| *These projects are eligible for Special Match Credit if the LPA chooses to utilize | | | | | |

Mississippi Gulf Coast Metropolitan Planning Organization

FY2025-2028 Transportation Improvement Program (TIP)



| | | | | |
|----------------------------|--|---------------|------------|--|
| County | Harrison | Agency | Gulfport | |
| Improvement Type | Intersection | Route | Oneal Road | |
| Project Termini | Three Rivers Road | | | |
| Project Description | Improvements include dedicated left and right turn lanes for north and southbound lanes along Three Rivers Road and mast arm traffic signals with liminaries and Glance monitoring system. | | | |



| FY | Source | Phase | Federal | Local/Match | Total |
|---------------------------|----------|-------|--------------------|------------------|--------------------|
| | | PE | \$0 | \$155,000 | \$155,000 |
| 2027 | TMA-STBG | CON | \$1,240,000 | \$310,000 | \$1,550,000 |
| | | | | | |
| | | | | | |
| Total Project Cost | | | \$1,240,000 | \$465,000 | \$1,705,000 |

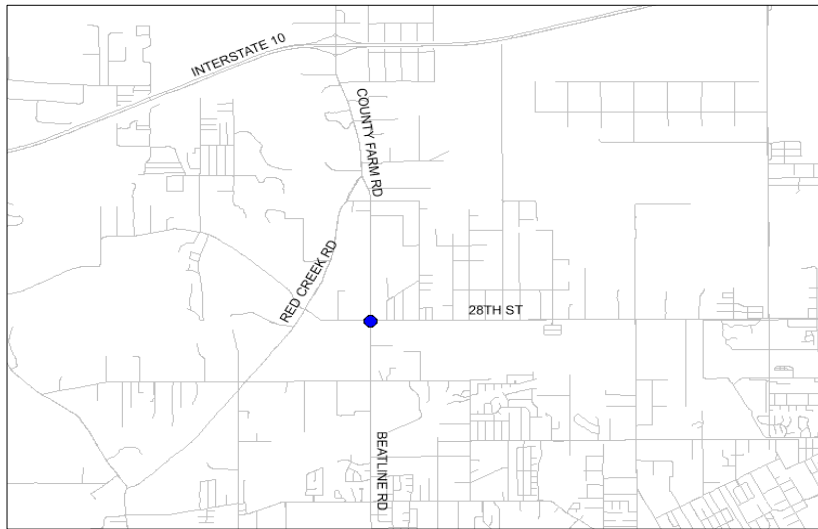
| Project Notes | | | | | |
|---|---------------|------|----------|------|-------|
| Action | Add to TIP | Date | 8/4/2022 | Type | Amend |
| Remarks | \$440,000 | | | | |
| Action | Increase Cost | Date | 8/8/2024 | Type | Amend |
| Remarks | \$800,000 | | | | |
| Action | | Date | | Type | |
| Remarks | | | | | |
| Action | | Date | | Type | |
| Remarks | | | | | |
| Action | | Date | | Type | |
| Remarks | | | | | |
| Action | | Date | | Type | |
| Remarks | | | | | |
| Action | | Date | | Type | |
| Remarks | | | | | |
| *These projects are eligible for Special Match Credit if the LPA chooses to utilize | | | | | |

Mississippi Gulf Coast Metropolitan Planning Organization

FY2025-2028 Transportation Improvement Program (TIP)



| | | | | |
|----------------------------|--|---------------|---------------|--|
| County | Harrison County | Agency | Long Beach | |
| Improvement Type | Intersection | Route | Beatline Road | |
| Project Termini | 28th Street | | | |
| Project Number | | | | |
| Project Description | The addition of turning lanes, striping and a flashing beacon are proposed for this intersection | | | |



| FY | Source | Phase | Federal | Local/Match | Total |
|---------------------------|----------|-------|------------------|------------------|------------------|
| | | PE | \$0 | \$36,365 | \$36,365 |
| | | ROW | \$0 | \$50,000 | \$50,000 |
| 2027 | TMA-STBG | CON | \$287,750 | \$75,750 | \$363,650 |
| | | | | | |
| Total Project Cost | | | \$287,750 | \$162,115 | \$450,015 |

| Project Notes | | | | | |
|---|------------|------|----------|------|-------|
| Action | Add to TIP | Date | 8/4/2022 | Type | Amend |
| Remarks | \$287,750 | | | | |
| Action | | Date | | Type | |
| Remarks | | | | | |
| Action | | Date | | Type | |
| Remarks | | | | | |
| Action | | Date | | Type | |
| Remarks | | | | | |
| Action | | Date | | Type | |
| Remarks | | | | | |
| Action | | Date | | Type | |
| Remarks | | | | | |
| Action | | Date | | Type | |
| Remarks | | | | | |
| *These projects are eligible for Special Match Credit if the LPA chooses to utilize | | | | | |

Mississippi Gulf Coast Metropolitan Planning Organization

FY2025-2028 Transportation Improvement Program (TIP)



| | | | |
|----------------------------|---|---------------|-------------------|
| County | Harrison County | Agency | Long Beach |
| Improvement Type | Intersection | Route | Jeff Davis Avenue |
| Project Termini | West Railroad Street | | |
| Project Number | | | |
| Project Description | Additional turn lanes, striping, and miscellaneous intersection improvements at W. Railroad St. and Jeff Davis Ave. | | |



| FY | Source | Phase | Federal | Local/Match | Total |
|---------------------------|----------|-------|------------------|------------------|------------------|
| | | PE | \$0 | \$80,913 | \$80,913 |
| | | ROW | \$0 | \$50,000 | \$50,000 |
| 2027 | TMA-STBG | CON | \$647,304 | \$161,826 | \$809,130 |
| | | | | | |
| Total Project Cost | | | \$647,304 | \$292,739 | \$940,043 |

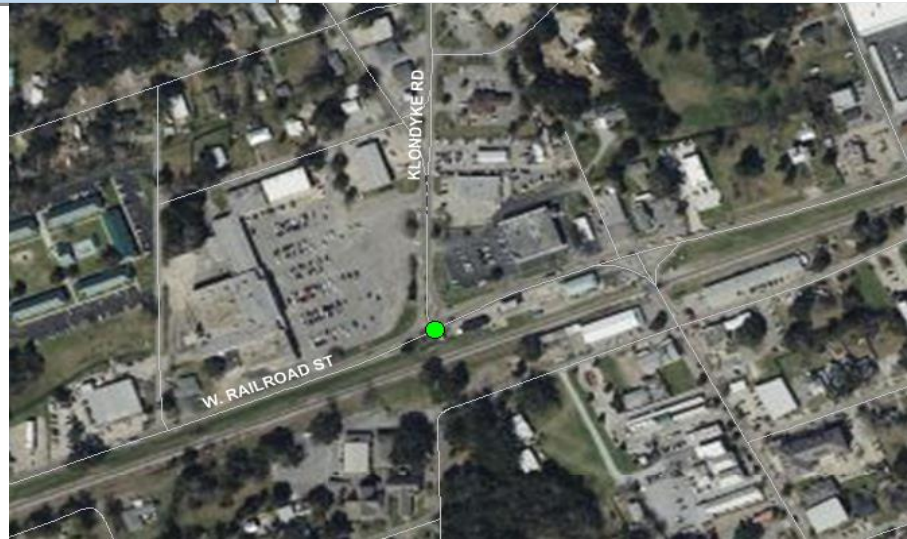
| Project Notes | | | | | |
|---|---|------|-----------|------|-------|
| Action | Add to TIP | Date | 8/4/2022 | Type | Amend |
| Remarks | \$542,800 | | | | |
| Action | Project description | Date | 11/8/2022 | Type | Mod |
| Remarks | Provided an improved project description | | | | |
| Action | Break out project | Date | 8/8/2024 | Type | Amend |
| Remarks | 3 downtown interections into seprate projects | | | | |
| Action | Increase cost | Date | 8/8/2024 | Type | Amend |
| Remarks | Add \$104,504 | | | | |
| Action | | Date | | Type | |
| Remarks | | | | | |
| Action | | Date | | Type | |
| Remarks | | | | | |
| Action | | Date | | Type | |
| Remarks | | | | | |
| *These projects are eligible for Special Match Credit if the LPA chooses to utilize | | | | | |

Mississippi Gulf Coast Metropolitan Planning Organization

FY2025-2028 Transportation Improvement Program (TIP)



| | | | |
|----------------------------|---|---------------|---------------|
| County | Harrison County | Agency | Long Beach |
| Improvement Type | Intersection | Route | Klondyke Road |
| Project Termini | West Railroad Street | | |
| Project Number | | | |
| Project Description | The construction of a roundabout at Klondyke Road and W. Railroad Street. | | |



| FY | Source | Phase | Federal | Local/Match | Total |
|---------------------------|----------|-------|--------------------|------------------|--------------------|
| | | PE | \$0 | \$275,466 | \$275,466 |
| | | ROW | \$0 | \$50,000 | \$50,000 |
| 2028 | TMA-STBG | CON | \$2,203,732 | \$550,933 | \$2,754,665 |
| | | | | | |
| Total Project Cost | | | \$2,203,732 | \$876,399 | \$3,080,131 |

| Project Notes | | | | | |
|---|---|------|-----------|------|-------|
| Action | Add to TIP | Date | 8/4/2022 | Type | Amend |
| Remarks | \$542,800 | | | | |
| Action | Project description | Date | 11/8/2022 | Type | Mod |
| Remarks | Provided an improved project description | | | | |
| Action | Break out project | Date | 8/8/2024 | Type | Amend |
| Remarks | 3 downtown interections into seprate projects | | | | |
| Action | Increase cost | Date | 8/8/2024 | Type | Amend |
| Remarks | \$2,203,732 | | | | |
| Action | | Date | | Type | |
| Remarks | | | | | |
| Action | | Date | | Type | |
| Remarks | | | | | |
| Action | | Date | | Type | |
| Remarks | | | | | |
| *These projects are eligible for Special Match Credit if the LPA chooses to utilize | | | | | |

Mississippi Gulf Coast Metropolitan Planning Organization

FY2025-2028 Transportation Improvement Program (TIP)



| | | | |
|----------------------------|--|---------------|---------------|
| County | Harrison County | Agency | Long Beach |
| Improvement Type | Intersection | Route | Klondyke Road |
| Project Termini | Pineville Road | | |
| Project Number | | | |
| Project Description | The addition of signalization at Klondyke and Pineville Roads. | | |



| FY | Source | Phase | Federal | Local/Match | Total |
|---------------------------|----------|-------|------------------|------------------|--------------------|
| | | PE | \$0 | \$122,949 | \$122,949 |
| | | ROW | \$0 | \$50,000 | \$50,000 |
| 2027 | TMA-STBG | CON | \$983,595 | \$245,899 | \$1,229,494 |
| | | | | | |
| | | | | | |
| Total Project Cost | | | \$983,595 | \$418,848 | \$1,402,443 |

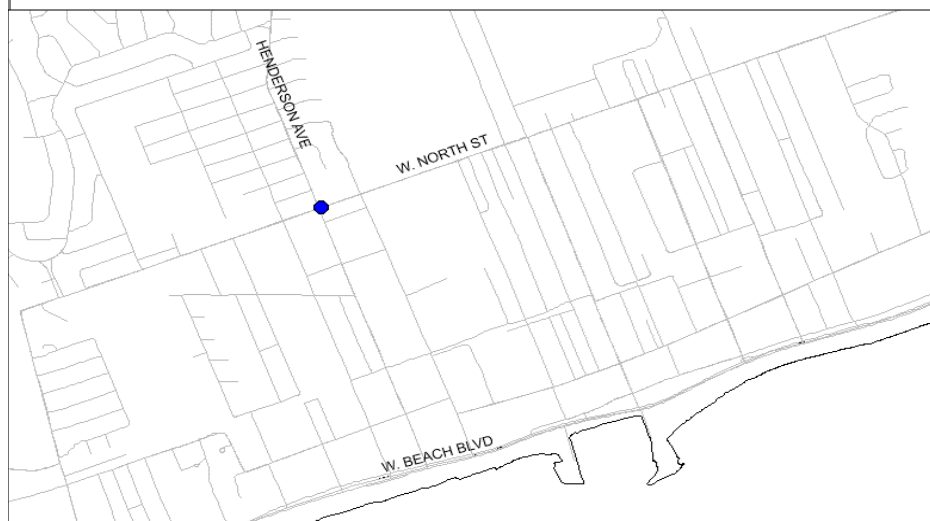
| Project Notes | | | | | |
|---|---|------|-----------|------|-------|
| Action | Add to TIP | Date | 8/4/2022 | Type | Amend |
| Remarks | \$542,800 | | | | |
| Action | Project description | Date | 11/8/2022 | Type | Mod |
| Remarks | Provided an improved project description | | | | |
| Action | Break out project | Date | 8/8/2024 | Type | Amend |
| Remarks | 3 downtown interections into seprate projects | | | | |
| Action | Increase cost | Date | 8/8/2024 | Type | Amend |
| Remarks | \$983,595 | | | | |
| Action | | Date | | Type | |
| Remarks | | | | | |
| Action | | Date | | Type | |
| Remarks | | | | | |
| Action | | Date | | Type | |
| Remarks | | | | | |
| *These projects are eligible for Special Match Credit if the LPA chooses to utilize | | | | | |

Mississippi Gulf Coast Metropolitan Planning Organization

FY2025-2028 Transportation Improvement Program (TIP)



| | | | |
|----------------------------|--|---------------|----------------|
| County | Harrison County | Agency | Pass Christian |
| Improvement Type | Intersection | Route | North Street |
| Project Termini | Henderson Avenue | | |
| Project Number | | | |
| Project Description | This project adds signalization, turn lanes, striping and pedestrian crossings to provide more efficient and safer travel in the area. | | |



| FY | Source | Phase | Federal | Local/Match | Total |
|---------------------------|----------|-------|------------------|------------------|------------------|
| | | PE | \$0 | \$60,908 | \$60,908 |
| | | ROW | \$0 | \$100,000 | \$100,000 |
| 2027 | TMA-STBG | CON | \$487,264 | \$121,816 | \$609,080 |
| | | | | | |
| | | | | | |
| Total Project Cost | | | \$487,264 | \$282,724 | \$769,988 |

| Project Notes | | | | | |
|---|------------|------|----------|------|-------|
| Action | Add to TIP | Date | 8/4/2022 | Type | Amend |
| Remarks | \$487,264 | | | | |
| Action | | Date | | Type | |
| Remarks | | | | | |
| Action | | Date | | Type | |
| Remarks | | | | | |
| Action | | Date | | Type | |
| Remarks | | | | | |
| Action | | Date | | Type | |
| Remarks | | | | | |
| Action | | Date | | Type | |
| Remarks | | | | | |
| Action | | Date | | Type | |
| Remarks | | | | | |
| *These projects are eligible for Special Match Credit if the LPA chooses to utilize | | | | | |

Mississippi Gulf Coast Metropolitan Planning Organization

FY2025-2028 Transportation Improvement Program (TIP)



| | | | |
|----------------------------|--|---------------|-------------------|
| County | Harrison | Agency | Gulfport |
| Improvement Type | Multimodal | Route | Washington Avenue |
| Project Termini | Airport Road to South Vista Drive | | |
| Project Number | | | |
| Project Description | Improvements include the extension of the Hewes Avenue boulevard section along Washington Avenue, street lighting, and minimal drainage improvements. This project in conjunction with the current Airport Road project will provide a 4-lane road system connecting the Airport, Air National Guard, and commuters to Highway 49, Interstate 10, and commercial development north of Interstate 10 via the BUILD Grant project. | | |



| FY | Source | Phase | Federal | Local/Match | Total |
|---------------------------|----------|-------|--------------------|--------------------|--------------------|
| | | PE | \$0 | \$350,000 | \$350,000 |
| | | ROW | \$0 | \$50,000 | \$50,000 |
| 2027 | TMA-STBG | CON | \$2,800,000 | \$700,000 | \$3,500,000 |
| | | | | | |
| | | | | | |
| Total Project Cost | | | \$2,800,000 | \$1,100,000 | \$3,900,000 |

| Project Notes | | | | | |
|---|-------------|------|----------|------|-------|
| Action | Add to TIP | Date | 8/4/2022 | Type | Amend |
| Remarks | \$2,800,000 | | | | |
| Action | | Date | | Type | |
| Remarks | | | | | |
| Action | | Date | | Type | |
| Remarks | | | | | |
| Action | | Date | | Type | |
| Remarks | | | | | |
| Action | | Date | | Type | |
| Remarks | | | | | |
| Action | | Date | | Type | |
| Remarks | | | | | |
| *These projects are eligible for Special Match Credit if the LPA chooses to utilize | | | | | |

Mississippi Gulf Coast Metropolitan Planning Organization

FY2025-2028 Transportation Improvement Program (TIP)



| | | | |
|----------------------------|--|---------------|-------------------------------|
| County | Harrison | Agency | Diberville |
| Improvement Type | Intersection/Multimodal | Route | Mallet Road - Lamey Bridge Rd |
| Project Termini | Mallett/Sangani Blvd from East Wal Mart Dr to Daisy Vestry Rd and Lamey Bridge Rd from I-110 to Cypress Creek | | |
| Project Number | | | |
| Project Description | The project includes reconfiguring the Mallet Rd/Lamey Bridge Rd intersection and widening of Mallett Road, an existing three lane roadway, from Lamey Bridge Road to Daisy Vestry Road to match the four lane sections on either end of this roadway segment. | | |



| FY | Source | Phase | Federal | Local/Match | Total |
|---------------------------|--------------|-------|--------------------|---------------------|---------------------|
| | MS Bond Bill | PE | \$0 | \$ 1,000,000 | \$ 1,000,000 |
| | MS Bond Bill | ROW | \$0 | \$ 2,100,000 | \$ 2,100,000 |
| 2025 | MS Bond Bill | CON | \$0 | \$4,650,000 | \$ 4,650,000 |
| 2025 | TMA-CRP | CON | \$1,500,000 | \$375,000 | \$1,875,000 |
| 2025 | DOT-HIP | CON | \$2,000,000 | \$500,000 | \$2,500,000 |
| | N/A | CON | \$0 | \$2,675,000 | \$2,675,000 |
| Total Project Cost | | | \$3,500,000 | \$11,300,000 | \$14,800,000 |

Project Notes

| | | | | | |
|----------------|--|-------------|-----------|-------------|-------|
| Action | Combine | Date | 3/14/2024 | Type | Amend |
| Remarks | Combine Mallet Intersection and Roadway Projects | | | | |
| Action | Add funding | Date | 8/8/2024 | Type | Amend |
| Remarks | 1500000 TMA-CRP - Call for projects | | | | |
| Action | Add funding | Date | 8/8/2024 | Type | Amend |
| Remarks | \$2000000 THUD - DOT-HIP | | | | |
| Action | | Date | | Type | |
| Remarks | | | | | |
| Action | | Date | | Type | |
| Remarks | | | | | |
| Action | | Date | | Type | |
| Remarks | | | | | |
| Action | | Date | | Type | |
| Remarks | | | | | |

*These projects are eligible for Special Match Credit if the LPA chooses to utilize

Mississippi Gulf Coast Metropolitan Planning Organization

FY2025-2028 Transportation Improvement Program (TIP)



| | | | |
|----------------------------|--|---------------|---------------------------------|
| County | Harrison | Agency | Diberville |
| Improvement Type | Bike/Ped | Route | New ped bridge and walking path |
| Project Termini | Gorenflo Road to new recreation area | | |
| Project Number | | | |
| Project Description | The Bicycle and Pedestrian Bridge will parallel the Lamey Bridge Road I-10 Overpass just to the East, providing a safe alternative to the underserved neighborhoods to the south of I-10 to access the D'Iberville commercial area and recreation opportunities. | | |



| FY | Source | Phase | Federal | Local/Match | Total |
|---------------------------|--------|-------|------------|---------------------|---------------------|
| Illustrative | N/A | PE | \$0 | \$ 450,000 | \$ 450,000 |
| Illustrative | N/A | ENV | \$0 | \$ 450,000 | \$ 450,000 |
| Illustrative | N/A | ROW | \$0 | \$ 500,000 | \$ 500,000 |
| Illustrative | N/A | CON | \$0 | \$ 10,764,000 | \$ 10,764,000 |
| | | | | | |
| | | | | | |
| | | | | | |
| | | | | | |
| Total Project Cost | | | \$0 | \$12,164,000 | \$12,164,000 |

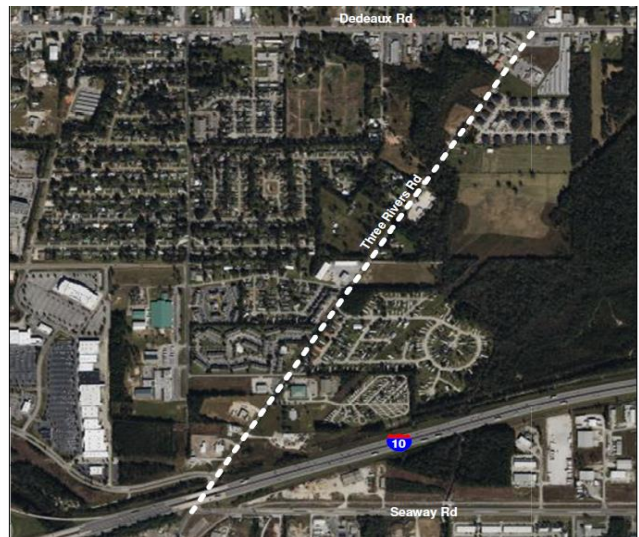
| Project Notes | | | | | |
|---|---|------|----------|------|-------|
| Action | Add to TIP | Date | 3/9/2023 | Type | Amend |
| Remarks | No funding in place - RAISE grant requested | | | | |
| Action | | Date | | Type | |
| Remarks | | | | | |
| Action | | Date | | Type | |
| Remarks | | | | | |
| Action | | Date | | Type | |
| Remarks | | | | | |
| Action | | Date | | Type | |
| Remarks | | | | | |
| Action | | Date | | Type | |
| Remarks | | | | | |
| Action | | Date | | Type | |
| Remarks | | | | | |
| *These projects are eligible for Special Match Credit if the LPA chooses to utilize | | | | | |

Mississippi Gulf Coast Metropolitan Planning Organization

FY2025-2028 Transportation Improvement Program (TIP)



| | | | |
|----------------------------|---|---------------|-------------------|
| County | Harrison | Agency | Gulfport |
| Improvement Type | Multimodal | Route | Three Rivers Road |
| Project Termini | Seaway Road to Dedeaux Road | | |
| Project Number | | | |
| Project Description | Widen Three Rivers Road and provide pedestrian pathways | | |



Project Notes

| | | | | | |
|----------------|---|-------------|----------|-------------|-------|
| Action | Add to TIP | Date | 3/9/2023 | Type | Amend |
| Remarks | No funding in place - RAISE grant requested | | | | |
| Action | | Date | | Type | |
| Remarks | | | | | |
| Action | | Date | | Type | |
| Remarks | | | | | |
| Action | | Date | | Type | |
| Remarks | | | | | |
| Action | | Date | | Type | |
| Remarks | | | | | |
| Action | | Date | | Type | |
| Remarks | | | | | |

| FY | Source | Phase | Federal | Local/Match | Total |
|---------------------------|--------|-------|------------|---------------------|---------------------|
| Illustrative | N/A | PE | \$0 | \$ 3,292,719 | \$ 3,292,719 |
| Illustrative | N/A | ENV | \$0 | \$ 1,365,416 | \$ 1,365,416 |
| Illustrative | N/A | ROW | \$0 | \$ 7,601,168 | \$ 7,601,168 |
| Illustrative | N/A | CON | \$0 | \$ 10,787,258 | \$ 10,787,258 |
| | | | | | |
| | | | | | |
| | | | | | |
| | | | | | |
| Total Project Cost | | | \$0 | \$23,046,561 | \$23,046,561 |

*These projects are eligible for Special Match Credit if the LPA chooses to utilize

Mississippi Gulf Coast Metropolitan Planning Organization

FY2025-2028 Transportation Improvement Program (TIP)



| | | | |
|----------------------------|--|---------------|-------------------------|
| County | Harrison | Agency | Coast Transit Authority |
| Improvement Type | Multimodal | Route | |
| Project Termini | | | |
| Project Number | | | |
| Project Description | Coast Transit Authority/Memorial Hospital Gulfport Intermodal Facility | | |



Project Notes

| | | | | | |
|---------|---|------|-----------|------|-------|
| Action | Add to TIP | Date | 3/14/2024 | Type | Amend |
| Remarks | No funding in place - RAISE grant requested | | | | |
| Action | | Date | | Type | |
| Remarks | | | | | |
| Action | | Date | | Type | |
| Remarks | | | | | |
| Action | | Date | | Type | |
| Remarks | | | | | |
| Action | | Date | | Type | |
| Remarks | | | | | |
| Action | | Date | | Type | |
| Remarks | | | | | |

| FY | Source | Phase | Federal | Local/Match | Total |
|---------------------------|--------|-------|------------|---------------------|---------------------|
| Illustrative | N/A | CON | \$0 | \$23,962,848 | \$ 23,962,848 |
| | | | | | |
| | | | | | |
| | | | | | |
| | | | | | |
| | | | | | |
| | | | | | |
| | | | | | |
| | | | | | |
| Total Project Cost | | | \$0 | \$23,962,848 | \$23,962,848 |

Mississippi Gulf Coast Metropolitan Planning Organization

FY2025-2028 Transportation Improvement Program (TIP)



| | | | |
|----------------------------|---|---------------|-------------------|
| County | Harrison | Agency | D'Iberville |
| Improvement Type | Intersection | Route | Lamey Bridge Road |
| Project Termini | Lemoine Boulevard | | |
| Project Number | | | |
| Project Description | Project will realign the lanes on the east and west sides of the intersection as well as adding a dedicated left turn lane for northbound traffic on Lamey Bridge Road into WalMart and a dedicated left turn lane for westbound traffic on Lemoine Boulevard onto Lamey Bridge Road. Project will also add pedestrian signals for protecting pedestrians crossing on the north side of intersection from Lemoine Boulevard to Walmart. | | |



Project Notes

| | | | | | |
|---------|-------------|------|----------|------|-------|
| Action | New Project | Date | 8/8/2024 | Type | Amend |
| Remarks | \$888,628 | | | | |
| Action | | Date | | Type | |
| Remarks | | | | | |
| Action | | Date | | Type | |
| Remarks | | | | | |
| Action | | Date | | Type | |
| Remarks | | | | | |
| Action | | Date | | Type | |
| Remarks | | | | | |
| Action | | Date | | Type | |
| Remarks | | | | | |

| FY | Source | Phase | Federal | Local/Match | Total |
|---------------------------|---------|-------|------------------|------------------|--------------------|
| | | PE | \$0 | \$126,078 | \$126,078 |
| | | ROW | \$0 | \$50,000 | \$50,000 |
| 2028 | TMA-CRP | CON | \$888,628 | \$ 222,157 | \$ 1,110,785 |
| | | | | | |
| | | | | | |
| Total Project Cost | | | \$888,628 | \$398,235 | \$1,286,863 |

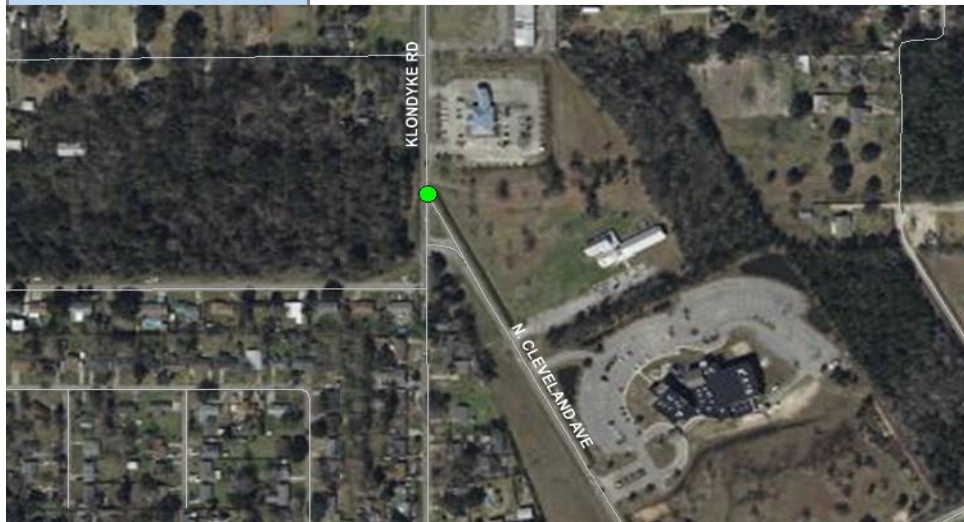
*These projects are eligible for Special Match Credit if the LPA chooses to utilize

Mississippi Gulf Coast Metropolitan Planning Organization

FY2025-2028 Transportation Improvement Program (TIP)



| | | | |
|----------------------------|---|---------------|---------------|
| County | Harrison | Agency | Long Beach |
| Improvement Type | Intersection | Route | Klondyke Road |
| Project Termini | Cleveland Avenue | | |
| Project Number | | | |
| Project Description | The project proposes replacing the existing abnormal alignment at Klondyke Road / Cleveland Avenue intersection with a roundabout intersection. | | |



| FY | Source | Phase | Federal | Local/Match | Total |
|---------------------------|----------|-------|--------------------|------------------|--------------------|
| | | PE | \$0 | \$216,314 | \$216,314 |
| 2028 | TMA-STBG | CON | \$1,443,715 | \$ 360,929 | \$ 1,804,644 |
| 2028 | TMA-CRP | CON | \$286,797 | \$ 71,699 | \$ 358,496 |
| | | | | | |
| | | | | | |
| | | | | | |
| | | | | | |
| | | | | | |
| Total Project Cost | | | \$1,730,512 | \$648,942 | \$2,379,454 |

| Project Notes | | | | | |
|---|----------------------------------|------|----------|------|-------|
| Action | New Project | Date | 8/8/2024 | Type | Amend |
| Remarks | 1442715 TMA-STBG, 286797 TMA-CRP | | | | |
| Action | | Date | | Type | |
| Remarks | | | | | |
| Action | | Date | | Type | |
| Remarks | | | | | |
| Action | | Date | | Type | |
| Remarks | | | | | |
| Action | | Date | | Type | |
| Remarks | | | | | |
| Action | | Date | | Type | |
| Remarks | | | | | |
| Action | | Date | | Type | |
| Remarks | | | | | |
| *These projects are eligible for Special Match Credit if the LPA chooses to utilize | | | | | |

Mississippi Gulf Coast Metropolitan Planning Organization

FY2025-2028 Transportation Improvement Program (TIP)



| | | | |
|----------------------------|--|---------------|--------------|
| County | Harrison | Agency | |
| Improvement Type | SEAWAY PUBLIC ACCESS INTERMODAL FACILITY | Route | Reicold Road |
| Project Termini | | | |
| Project Number | | | |
| Project Description | The project will fund the construction of a small intermodal transload site which will encompass three components of transportation, the Bernard Bayou Seaway, Rail and Trucking. This new inland port will bring more business and revenue to the MS coast area and benefit the entire surrounding public as a whole. | | |



| FY | Source | Phase | Federal | Local/Match | Total |
|---------------------------|--------|-------|--------------------|--------------------|--------------------|
| 2025 | CRISI | CON | \$2,400,000 | \$ 600,000 | \$ 3,000,000 |
| 2025 | N/A | CON | \$0 | \$ 4,664,967 | \$ 4,664,967 |
| | | | | | |
| | | | | | |
| | | | | | |
| Total Project Cost | | | \$2,400,000 | \$5,264,967 | \$7,664,967 |

Project Notes

| | | | | | |
|---------|----------------------------|------|----------|------|-------|
| Action | New Project | Date | 8/8/2024 | Type | Amend |
| Remarks | PIDP requested \$3,731,974 | | | | |
| Action | | Date | | Type | |
| Remarks | | | | | |
| Action | | Date | | Type | |
| Remarks | | | | | |
| Action | | Date | | Type | |
| Remarks | | | | | |
| Action | | Date | | Type | |
| Remarks | | | | | |
| Action | | Date | | Type | |
| Remarks | | | | | |

*These projects are eligible for Special Match Credit if the LPA chooses to utilize

Jackson County

Mississippi Gulf Coast Metropolitan Planning Organization

FY2025-2028 Transportation Improvement Program (TIP)



| | | | |
|----------------------------|-----------------------------------|---------------|---------------|
| County | Jackson | Agency | Moss Point |
| Improvement Type | Intersection | Route | I-10 Frontage |
| Project Termini | MS 613 and MS 63 | | |
| Project Description | I-10 Interstate Commerce District | | |



| FY | Source | Phase | Federal | Local/Match | Total |
|---------------------------|-------------|-------|--------------------|--------------------|--------------------|
| | | PE | \$0 | \$562,500 | \$562,500 |
| | | ROW | \$0 | \$100,000 | \$100,000 |
| 2028 | HIP Earmark | CON | \$4,500,000 | \$1,125,000 | \$5,625,000 |
| | | | | | |
| Total Project Cost | | | \$4,500,000 | \$1,787,500 | \$6,287,500 |

Project Notes

| | | | | | |
|---------|--------------------------------|------|-----------|------|-------|
| Action | Add to TIP | Date | 7/12/2021 | Type | Mod |
| Remarks | New project | | | | |
| Action | Funding Source | Date | 12/8/2022 | Type | Amend |
| Remarks | Add funding source HIP Earmark | | | | |
| Action | | Date | | Type | |
| Remarks | | | | | |
| Action | | Date | | Type | |
| Remarks | | | | | |
| Action | | Date | | Type | |
| Remarks | | | | | |
| Action | | Date | | Type | |
| Remarks | | | | | |

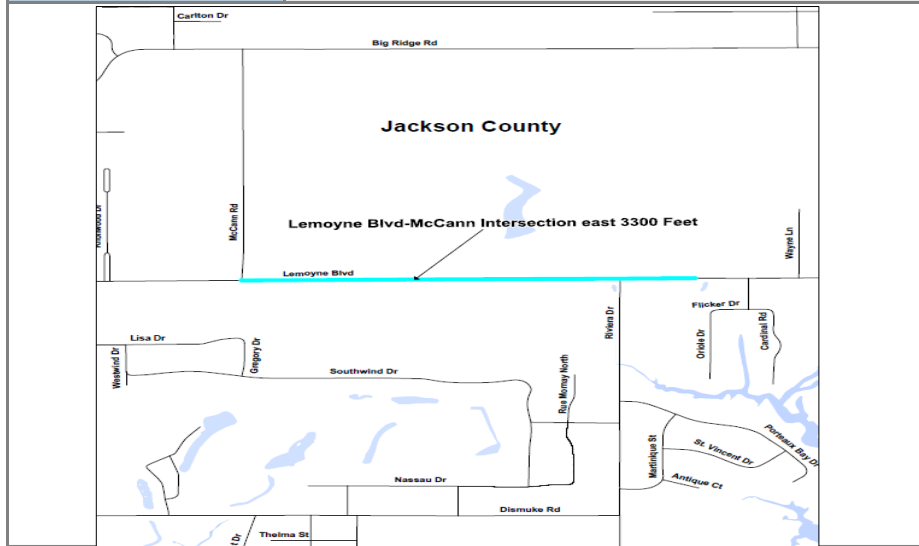
*These projects are eligible for Special Match Credit if the LPA chooses to utilize

Mississippi Gulf Coast Metropolitan Planning Organization

FY2025-2028 Transportation Improvement Program (TIP)



| | | | |
|----------------------------|--|---------------|-------------------|
| County | Jackson | Agency | Jackson County |
| Improvement Type | Bike/Ped | Route | Lemoyne Boulevard |
| Project Termini | McCann Road to 3300 feet to the east | | |
| Project Number | | | |
| Project Description | New sidewalks from new signalized intersection. Project Length: .64 mile | | |



| FY | Source | Phase | Federal | Match | Total |
|---------------------------|----------|-------|------------------|------------------|------------------|
| | | PE | \$0 | \$50,980 | \$50,980 |
| 2025 | TMA-STBG | CON | \$407,845 | \$101,961 | \$509,806 |
| | | | | | |
| | | | | | |
| | | | | | |
| | | | | | |
| | | | | | |
| | | | | | |
| Total Project Cost | | | \$407,845 | \$152,941 | \$560,786 |

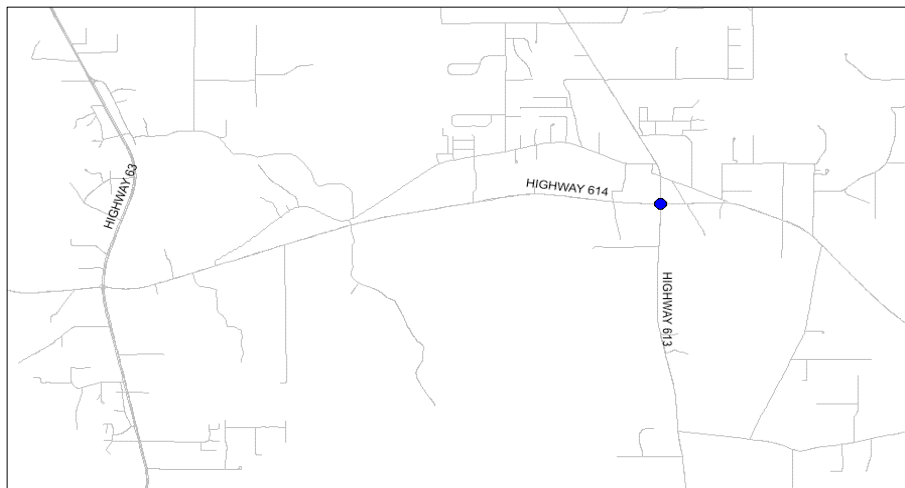
| Project Notes | | | | | |
|---|---|------|----------|------|-------|
| Action | Add to TIP | Date | 8/1/2020 | Type | Amend |
| Remarks | \$262,151 | | | | |
| Action | Increase funding | Date | 9/1/2023 | Type | Amend |
| Remarks | Add \$145,694 STBG TMA - \$262,151 to \$407,845 | | | | |
| Action | | Date | | Type | |
| Remarks | | | | | |
| Action | | Date | | Type | |
| Remarks | | | | | |
| Action | | Date | | Type | |
| Remarks | | | | | |
| Action | | Date | | Type | |
| Remarks | | | | | |
| Action | | Date | | Type | |
| Remarks | | | | | |
| *These projects are eligible for Special Match Credit if the LPA chooses to utilize | | | | | |

Mississippi Gulf Coast Metropolitan Planning Organization

FY2025-2028 Transportation Improvement Program (TIP)



| | | | |
|----------------------------|---|---------------|----------------|
| County | Jackson County | Agency | Jackson County |
| Improvement Type | Intersection | Route | Hwy 613 |
| Project Termini | Hwy 614 | | |
| Project Description | A roundabout will be constructed to ease traffic congestion at this major intersection of the growing East Central County area. | | |



| FY | Source | Phase | Federal | Local/Match | Total |
|---------------------------|----------|-------|------------------|------------------|------------------|
| | | PE | \$0 | \$75,000 | \$75,000 |
| 2025 | TMA-STBG | CON | \$600,000 | \$150,000 | \$750,000 |
| | | | | | |
| | | | | | |
| | | | | | |
| | | | | | |
| | | | | | |
| Total Project Cost | | | \$600,000 | \$225,000 | \$825,000 |

Project Notes

| | | | | | |
|---------|--|------|-----------|------|-------|
| Action | Add to TIP | Date | 8/4/2022 | Type | Amend |
| Remarks | \$600,000 | | | | |
| Action | Funding source | Date | 1/29/2024 | Type | Mod |
| Remarks | Change source from Non-urban to TMA-STBG | | | | |
| Action | | Date | | Type | |
| Remarks | | | | | |
| Action | | Date | | Type | |
| Remarks | | | | | |
| Action | | Date | | Type | |
| Remarks | | | | | |
| Action | | Date | | Type | |
| Remarks | | | | | |
| Action | | Date | | Type | |
| Remarks | | | | | |

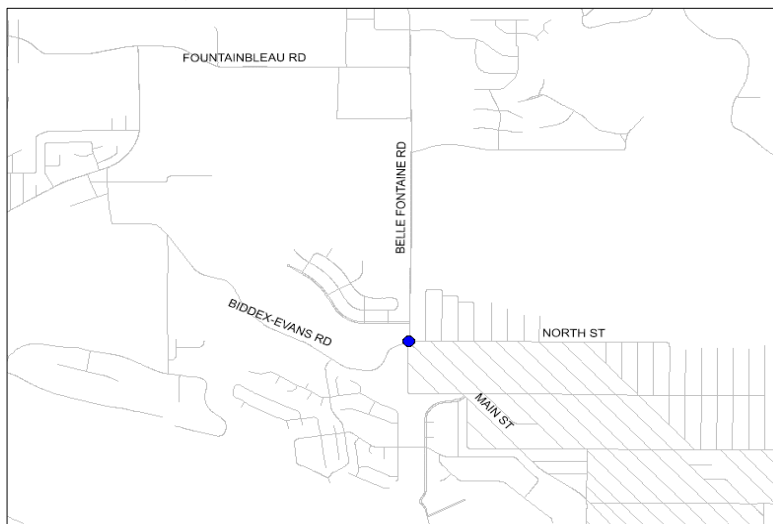
*These projects are eligible for Special Match Credit if the LPA chooses to utilize

Mississippi Gulf Coast Metropolitan Planning Organization

FY2025-2028 Transportation Improvement Program (TIP)



| | | | |
|----------------------------|--|---------------|-------------------|
| County | Jackson County | Agency | Jackson County |
| Improvement Type | Intersection | Route | Biddix Evans Road |
| Project Termini | Main Street | | |
| Project Number | | | |
| Project Description | This project will redesign the congested and dangerous 5 legged intersection | | |



| FY | Source | Phase | Federal | Local/Match | Total |
|---------------------------|----------|-------|--------------------|------------------|--------------------|
| | | PE | \$0 | \$150,000 | \$150,000 |
| | | ROW | \$0 | \$100,000 | \$100,000 |
| 2027 | TMA-STBG | CON | \$1,200,000 | \$300,000 | \$1,500,000 |
| | | | | | |
| | | | | | |
| | | | | | |
| | | | | | |
| | | | | | |
| Total Project Cost | | | \$1,200,000 | \$550,000 | \$1,750,000 |

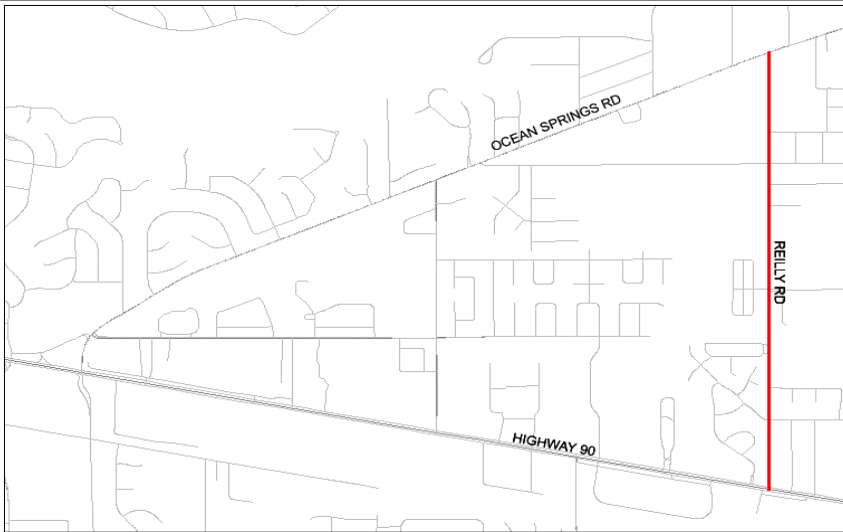
| Project Notes | | | | | |
|---|-------------|------|----------|------|-------|
| Action | Add to TIP | Date | 8/4/2022 | Type | Amend |
| Remarks | \$1,200,000 | | | | |
| Action | | Date | | Type | |
| Remarks | | | | | |
| Action | | Date | | Type | |
| Remarks | | | | | |
| Action | | Date | | Type | |
| Remarks | | | | | |
| Action | | Date | | Type | |
| Remarks | | | | | |
| Action | | Date | | Type | |
| Remarks | | | | | |
| Action | | Date | | Type | |
| Remarks | | | | | |
| *These projects are eligible for Special Match Credit if the LPA chooses to utilize | | | | | |

Mississippi Gulf Coast Metropolitan Planning Organization

9



| | | | |
|----------------------------|--|---------------|---------------|
| County | Jackson County | Agency | Ocean Springs |
| Improvement Type | Multimodal | Route | Reily Road |
| Project Termini | Ocean Springs Road to US 90 | | |
| Project Number | | | |
| Project Description | Widening the roadway to compliant travel lanes and adding a combination of sidewalks and multi-use pathways. | | |



| FY | Source | Phase | Federal | Local/Match | Total |
|---------------------------|----------|-------|--------------------|--------------------|--------------------|
| | | PE | \$0 | \$574,606 | \$574,606 |
| | | ROW | \$0 | \$100,000 | \$100,000 |
| 2026 | TMA-STBG | CON | \$3,346,854 | \$836,714 | \$4,183,568 |
| 2026 | HIP THUD | CON | \$1,250,000 | \$312,500 | \$1,562,500 |
| | | | | | |
| | | | | | |
| | | | | | |
| | | | | | |
| Total Project Cost | | | \$4,596,854 | \$1,823,820 | \$6,420,674 |

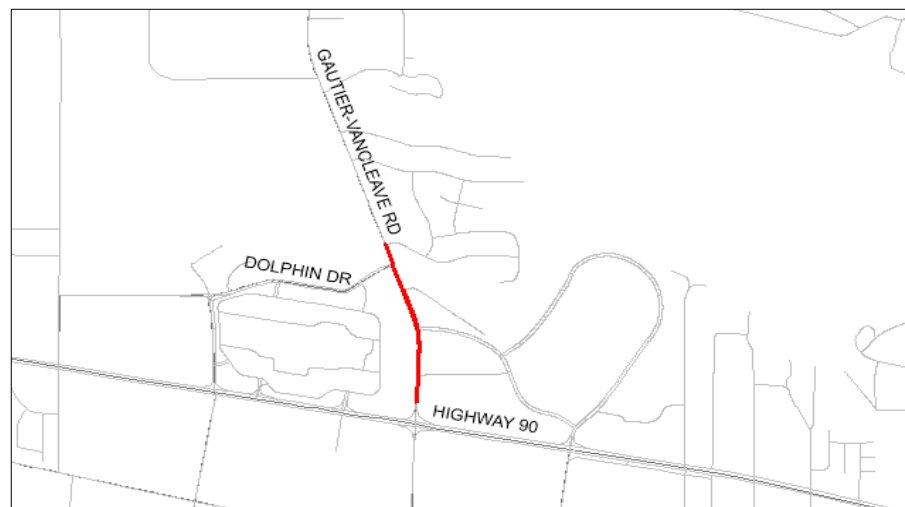
| Project Notes | | | | | |
|---|---|------|-----------|------|-------|
| Action | Add to TIP | Date | 8/4/2022 | Type | Amend |
| Remarks | \$934,054 | | | | |
| Action | Change funding | Date | 6/29/2023 | Type | Mod |
| Remarks | Swap HIP funding for TMA-STBG funding - \$177,681 | | | | |
| Action | Add PE | Date | 10/6/2023 | Type | Mod |
| Remarks | Add PE funding | | | | |
| Action | Change FY | Date | 10/6/2023 | Type | Mod |
| Remarks | Move from Illustrative to FY 2026 | | | | |
| Action | Increase cost | Date | 8/8/2024 | Type | Amend |
| Remarks | 2412800 TMA STBG | | | | |
| Action | Add funds | Date | 8/8/2024 | Type | Amend |
| Remarks | 1250000 HIP THUD | | | | |
| Action | | Date | | Type | |
| Remarks | | | | | |
| Action | | Date | | Type | |
| Remarks | | | | | |
| Action | | Date | | Type | |
| Remarks | | | | | |
| *These projects are eligible for Special Match Credit if the LPA chooses to utilize | | | | | |

Mississippi Gulf Coast Metropolitan Planning Organization

FY2025-2028 Transportation Improvement Program (TIP)



| | | | |
|----------------------------|-----------------------|---------------|------------------------|
| County | Jackson County | Agency | Gautier |
| Improvement Type | Bike/Ped | Route | Gautier-Vancleave Road |
| Project Termini | Valleywood to US 90 | | |
| Project Number | | | |
| Project Description | Sidewalks to fill gap | | |



| FY | Source | Phase | Federal | Local/Match | Total |
|---------------------------|---------|-------|------------------|-----------------|------------------|
| | | PE | \$0 | \$26,895 | \$26,895 |
| 2026 | Non Urb | CON | \$215,160 | \$53,790 | \$268,950 |
| | | | | | |
| | | | | | |
| | | | | | |
| | | | | | |
| | | | | | |
| Total Project Cost | | | \$215,160 | \$80,685 | \$295,845 |

Project Notes

| | | | | | |
|----------------|------------|-------------|----------|-------------|-------|
| Action | Add to TIP | Date | 8/4/2022 | Type | Amend |
| Remarks | \$215,160 | | | | |
| Action | | Date | | Type | |
| Remarks | | | | | |
| Action | | Date | | Type | |
| Remarks | | | | | |
| Action | | Date | | Type | |
| Remarks | | | | | |
| Action | | Date | | Type | |
| Remarks | | | | | |
| Action | | Date | | Type | |
| Remarks | | | | | |
| Action | | Date | | Type | |
| Remarks | | | | | |

*These projects are eligible for Special Match Credit if the LPA chooses to utilize

Mississippi Gulf Coast Metropolitan Planning Organization

FY2025-2028 Transportation Improvement Program (TIP)



| | | | |
|----------------------------|---|---------------|---------------|
| County | Jackson County | Agency | Gautier |
| Improvement Type | Intersection | Route | Dolphin Drive |
| Project Termini | CSX RR | | |
| Project Number | | | |
| Project Description | Dolphin Drive two-lane bridge over CSX Railroad- Old Spanish Trail will have to be raised to accommodate the height of the bridge, and its use will be affected; however, the citizens of Gautier have other alternatives for access during construction; especially with the extension of Guillotteville Road, which would be constructed prior to the grade separated crossing for traffic control. | | |



***Gautier CSX Railroad Overpass*
@ Dolphin Dr**

Project Notes

| | | | | | |
|----------------|--|-------------|-----------|-------------|-------|
| Action | Add to TIP | Date | 12/8/2022 | Type | Amend |
| Remarks | No funding - App for RR Crossing Elimination Program | | | | |
| Action | | Date | | Type | |
| Remarks | | | | | |
| Action | | Date | | Type | |
| Remarks | | | | | |
| Action | | Date | | Type | |
| Remarks | | | | | |
| Action | | Date | | Type | |
| Remarks | | | | | |
| Action | | Date | | Type | |
| Remarks | | | | | |

| FY | Source | Phase | Federal | Local/Match | Total |
|---------------------------|----------|-------|------------|---------------------|---------------------|
| illustrative | Unfunded | PE | \$0 | \$700,000 | \$700,000 |
| illustrative | Unfunded | ENV | \$0 | \$700,000 | \$700,000 |
| illustrative | Unfunded | CON | \$0 | \$13,800,000 | \$13,800,000 |
| | | | | | |
| Total Project Cost | | | \$0 | \$15,200,000 | \$15,200,000 |

*These projects are eligible for Special Match Credit if the LPA chooses to utilize

Mississippi Gulf Coast Metropolitan Planning Organization

FY2025-2028 Transportation Improvement Program (TIP)



| | | | |
|----------------------------|--|---------------|-----------------|
| County | Jackson County | Agency | Moss Point |
| Improvement Type | Intersection | Route | Dantzler Street |
| Project Termini | Main Street | | |
| Project Number | | | |
| Project Description | This project will realign Dantzler Street to enhance access to the Moss Point Welcome Center. The current offset driveway will be removed and replaced with parking. Parking spaces will be added at the realigned intersection as well as crosswalk improvements for pedestrians. | | |



| FY | Source | Phase | Federal | Local/Match | Total |
|---------------------------|---------|-------|------------------|------------------|------------------|
| | | PE | \$0 | \$32,500 | \$32,500 |
| | | ROW | \$0 | \$50,000 | \$50,000 |
| 2025 | Non-Urb | CON | \$260,000 | \$65,000 | \$325,000 |
| | | | | | |
| | | | | | |
| | | | | | |
| | | | | | |
| Total Project Cost | | | \$260,000 | \$147,500 | \$407,500 |

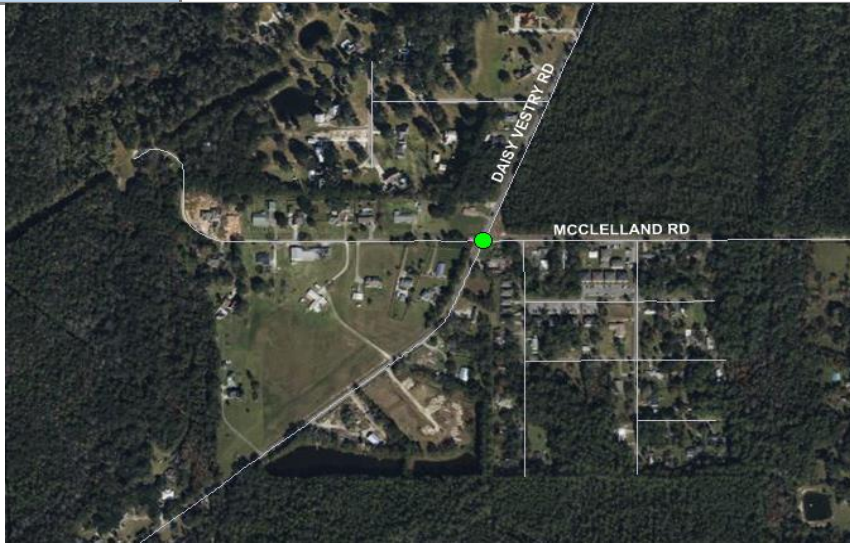
| Project Notes | | | | | |
|---|--------------------------|------|-----------|------|-------|
| Action | Add to TIP | Date | 12/8/2022 | Type | Amend |
| Remarks | \$260,000 Non-Urban STBG | | | | |
| Action | | Date | | Type | |
| Remarks | | | | | |
| Action | | Date | | Type | |
| Remarks | | | | | |
| Action | | Date | | Type | |
| Remarks | | | | | |
| Action | | Date | | Type | |
| Remarks | | | | | |
| Action | | Date | | Type | |
| Remarks | | | | | |
| Action | | Date | | Type | |
| Remarks | | | | | |
| *These projects are eligible for Special Match Credit if the LPA chooses to utilize | | | | | |

Mississippi Gulf Coast Metropolitan Planning Organization

FY2025-2028 Transportation Improvement Program (TIP)



| | | | |
|----------------------------|---|---------------|-----------------|
| County | Jackson County | Agency | Jackson County |
| Improvement Type | Intersection | Route | Daisy Vestry Rd |
| Project Termini | McClelland Rd | | |
| Project Number | | | |
| Project Description | This intersection improvement project will provide a safer intersection with the addition of a new left turn lane and two right turn through lanes. | | |



| FY | Source | Phase | Federal | Local/Match | Total |
|---------------------------|---------|-------|------------------|------------------|--------------------|
| | | PE | \$0 | \$117,942 | \$117,942 |
| | | ROW | \$0 | \$50,000 | \$50,000 |
| 2028 | TMA-CRP | CON | \$943,536 | \$235,884 | \$1,179,420 |
| | | | | | |
| | | | | | |
| | | | | | |
| | | | | | |
| Total Project Cost | | | \$943,536 | \$403,826 | \$1,347,362 |

| Project Notes | | | | | |
|---|------------|------|----------|------|-------|
| Action | Add to TIP | Date | 8/8/2024 | Type | Amend |
| Remarks | \$943,536 | | | | |
| Action | | Date | | Type | |
| Remarks | | | | | |
| Action | | Date | | Type | |
| Remarks | | | | | |
| Action | | Date | | Type | |
| Remarks | | | | | |
| Action | | Date | | Type | |
| Remarks | | | | | |
| Action | | Date | | Type | |
| Remarks | | | | | |
| Action | | Date | | Type | |
| Remarks | | | | | |
| *These projects are eligible for Special Match Credit if the LPA chooses to utilize | | | | | |

Mississippi Gulf Coast Metropolitan Planning Organization

FY2025-2028 Transportation Improvement Program (TIP)



| | | | |
|----------------------------|---|---------------|---------------|
| County | Jackson County | Agency | Ocean Springs |
| Improvement Type | Intersection | Route | US 90 |
| Project Termini | MLK Jr Ave & Washington Ave | | |
| Project Number | | | |
| Project Description | This project will support intersection improvements on Highway 90 at Washington Avenue and at MLK/Vermont. The concepts were created through a previous TIP-funded study at these location. Improvements will include crosswalks, modified timing for traffic lights, modifications to the lane configurations and patterns, and installation of channelized medians along the adjacent frontage roads. | | |



| FY | Source | Phase | Federal | Local/Match | Total |
|---------------------------|----------|-------|------------------|------------------|------------------|
| | | PE | \$0 | \$97,100 | \$97,100 |
| 2028 | TMA-STBG | CON | \$696,800 | \$174,200 | \$871,000 |
| | | | | | |
| | | | | | |
| Total Project Cost | | | \$696,800 | \$271,300 | \$968,100 |

| Project Notes | | | | | |
|---|------------|------|----------|------|-------|
| Action | Add to TIP | Date | 8/8/2024 | Type | Amend |
| Remarks | \$696,800 | | | | |
| Action | | Date | | Type | |
| Remarks | | | | | |
| Action | | Date | | Type | |
| Remarks | | | | | |
| Action | | Date | | Type | |
| Remarks | | | | | |
| Action | | Date | | Type | |
| Remarks | | | | | |
| Action | | Date | | Type | |
| Remarks | | | | | |
| *These projects are eligible for Special Match Credit if the LPA chooses to utilize | | | | | |



Mississippi Gulf Coast Metropolitan Planning Organization

FY2025-2028 Transportation Improvement Program (TIP)

Safety Group

Group Description

The Safety Group is used to fund projects in the MPO’s Safety Program. Gulf Regional Planning Commission serving as staff for the MPO provides planning work described in its Unified Planning Work Program (UPWP) that is used to identify projects to be developed and funded with the Safety Group. The Mississippi Gulf Coast MPO will set aside \$500,000 of its annual allocation of STBG funds for projects to enhance the safe mobility of all modes of transportation on the Mississippi Gulf Coast. GRPC works with FHWA to develop projects that will be eligible for the Federal share payable to amount to 100 percent of the cost of construction of such projects as described in 23 U.S.C. 120 (c) and 23 CFR 652.9. Projects will be selected by GRPC for funding through this program, coordinated with the applicable local public agency and initiated as needed without the requirement of a TIP amendment.

| Agency | Project Description | Source | Scope | Date added | Fed. Funds |
|--------|--|----------|--------------|------------|------------|
| CTA | Traffic Signal Priority - Various intersections in Gulfport and Biloxi | TMA-STBG | Intersection | 7/20/2017 | \$500,000 |
| GRPC | Safety Projects PH II -- Jackson County | TMA-STBG | Safety | | \$550,000 |
| GRPC | Safety Projects PH II -- Harrison County | TMA-STBG | Safety | | \$550,000 |
| GRPC | Safety Projects PH II -- Hancock County | TMA-STBG | Safety | | \$0 |
| | | | | | |
| | | | | | |
| | | | | | |
| | | | | | |
| | | | | | |
| | | | | | |

**These projects are eligible for Special Match Credit if the LPA chooses to utilize*



Mississippi Gulf Coast Metropolitan Planning Organization

FY2025-2028 Transportation Improvement Program (TIP)

Studies/Projects Group

Project “Scoping” is the phase in the Project Development process that moves a recognized problem from an idea through the development of alternatives and environmental screening.

| Agency | Project Description | Phase | Funding | Date added | Federal Funds |
|----------------|---|---------|---------------------------|------------|---------------|
| Bay St. Louis | Multiuse Pathway Study | Scoping | TMA - STBG | 8/23/2018 | \$8,000 |
| Gulfport | Pavement Management | Scoping | TMA - STBG | 12/5/2019 | \$80,000 |
| Bay St. Louis | City ADA Improvements | Scoping | TMA - STBG | 12/5/2019 | \$50,000 |
| Long Beach | Beatline Parkway | ENV | TMA - STBG | 12/5/2019 | \$150,000 |
| | | | HIP Congressional Earmark | 12/8/2022 | \$150,000 |
| GRPC | Airport Connector Feasibility Study | Scoping | TMA - STBG | 12/8/2022 | \$80,000 |
| GRPC | Moss Point Interstate Interchange Study | Scoping | HB 1413 | 3/9/2023 | \$300,000 |
| D'Iberville | Rodriguez Street / I-110 Traffic Study | Scoping | TMA - STBG | 3/9/2023 | \$78,400 |
| Pascagoula | 14th Street Road Diet | Scoping | Non-Urban STBG | 11/2/2023 | \$39,920 |
| Jackson County | Slider Road | Scoping | TMA - STBG | 12/11/2023 | \$30,400 |
| Jackson County | Ocean Springs Middle School | Scoping | TMA - STBG | 12/11/2023 | \$36,000 |



Mississippi Gulf Coast Metropolitan Planning Organization FY2025-2028 Transportation Improvement Program (TIP)

Transportation Alternatives (TA) Group

The Transportation Alternatives (TA) Set-Aside from the Surface Transportation Block Grant (STBG) Program provides funding for a variety of generally smaller-scale transportation projects such as pedestrian and bicycle facilities.

| Agency | Project Description | | Date added | Fed. Funds |
|----------------|---|----------|------------|-------------|
| Diamondhead | Monjoy Creek Pathway - Diamonhead Drive to Rotten Bayou | TA | 8/23/2019 | \$80,000 |
| Hancock County | Washington Street ADA Beach Access | TA | 8/23/2019 | \$590,000 |
| Gulfport | Old Hwy 49 Sidewalks - Robinson Road to Dedeaux Road | TA | 8/23/2019 | \$160,000 |
| Gulfport | Old Hwy 49 Sidewalks - Robinson Road to Dedeaux Road | TA | 8/8/2024 | \$160,000 |
| Bay St Louis | Beyer Street - Carroll Avenue to Ranch Street | TA | 8/23/2019 | \$280,000 |
| Bay St Louis | Beyer Street - Carroll Avenue to Ranch Street | TMA-STBG | 4/19/2024 | \$116,240 |
| Waveland | St. Joseph Street Herlihy Street and Old Spanish Trail | TA | 10/22/2020 | \$500,000 |
| Waveland | St. Joseph Street Herlihy Street and Old Spanish Trail | TMA-STBG | 12/5/2023 | \$100,000 |
| Diamondhead | East Aloha Drive PH II Veterans Drive and Kalani Drive | TA | 10/22/2020 | \$489,866 |
| Diamondhead | East Aloha Drive PH II Veterans Drive and Kalani Drive | TMA-STBG | 8/8/2024 | \$339,680 |
| Diberville | Lamey Bridge Road - School to Diberville Blvd, Lemoyne Gorenflo | TA | 8/4/2022 | \$558,400 |
| Bay St Louis | Felicity Street, Seube Street, Pine Street, and Ranch Street | TA | 8/4/2022 | \$1,288,803 |
| Bay St Louis | Felicity Street, Seube Street, Pine Street, and Ranch Street | TA | 8/8/2024 | \$581,371 |
| Hancock County | Texas Flat Road - McLoed Park to School - Santa Rosa Pathway | TA | 8/4/2022 | \$755,565 |
| Gulfport | Seaway Road - Three Rivers Road to .9 mile East | TA | 8/8/2024 | \$800,000 |
| Jackson County | Walker Road - Rose Farm to Jackson Lee | TA | 8/8/2024 | \$408,377 |

MDOT allocations

| | | | | |
|------------|---|-----------|------------|-----------|
| Gautier | Martin Bluff Road - Roys Road to Little Bend Place | Sidewalks | 7/22/2020 | \$646,000 |
| MGCCC | Harrison County Campus | Sidewalks | 7/22/2020 | \$244,356 |
| MGCCC | Campus Pedestrian Connection Plaza | Ped | 12/13/2021 | \$305,446 |
| Diberville | Lamey Bridge Road Middle School Pedestrian Improvements | Sidewalks | 5/26/2022 | \$402,570 |

**These projects are eligible for Special Match Credit if the LPA chooses to utilize*



Mississippi Gulf Coast Metropolitan Planning Organization

FY2025-2028 Transportation Improvement Program (TIP)

Federal Transit Administration (FTA) Program of Projects (POP)

Coast Transit Authority FY2025 TIP

| FY | Project | Fund Source | FTA | CTA | Total |
|---------------|--------------------------------------|-----------------|---------------------|---------------------|---------------------|
| 2025 | Operating Assistance For Period | Sec 5307 | \$4,620,000 | \$4,620,000 | \$9,240,000 |
| 2025 | Preventive Maintenance | Sec 5307, 5310 | \$3,968,000 | \$992,000 | \$4,960,000 |
| 2025 | Short Range Planning | Sec 5307 | \$120,000 | \$30,000 | \$150,000 |
| 2025 | Computer Equipment | Sec 5307 | \$80,000 | \$20,000 | \$100,000 |
| 2025 | Shop Equipment | Sec 5307 | \$80,000 | \$20,000 | \$100,000 |
| 2025 | ADA Operating Expense | Sec 5307 | \$552,000 | \$138,000 | \$690,000 |
| 2025 | Transit Enhancements | Sec 5307 | \$96,000 | \$24,000 | \$120,000 |
| 2025 | Purchase Office Equipment | Sec 5307 | \$24,000 | \$6,000 | \$30,000 |
| 2025 | Purchase Communication Equipment | Sec 5307 | \$80,000 | \$20,000 | \$100,000 |
| 2025 | Purchase Revenue Vehicles | Sec 5339 a/b/c | \$1,760,000 | \$440,000 | \$2,200,000 |
| 2025 | Purchase Support Vehicles | Sec 5307, 5339a | \$184,000 | \$46,000 | \$230,000 |
| 2025 | JARC Purchased Transportation | Sec 5307 | \$400,000 | \$0 | \$400,000 |
| 2025 | Mobility Manager | Sec 5307 | \$64,000 | \$16,000 | \$80,000 |
| 2025 | CTA-MHG Gulfport Intermodal Facility | RAISE | \$19,170,278 | \$4,792,570 | \$23,962,848 |
| Totals | | | \$31,198,278 | \$11,164,570 | \$42,362,848 |



Mississippi Gulf Coast Metropolitan Planning Organization

FY2025-2028 Transportation Improvement Program (TIP)

Federal Transit Administration (FTA) Program of Projects (POP)

Coast Transit Authority FY2026 TIP

| FY | Project | Fund Source | FTA | CTA | Total |
|---------------|----------------------------------|-----------------|---------------------|--------------------|---------------------|
| 2026 | Operating Assistance For Period | Sec 5307 | \$4,850,000 | \$4,850,000 | \$9,700,000 |
| 2026 | Preventive Maintenance | Sec 5307, 5310 | \$4,160,000 | \$1,040,000 | \$5,200,000 |
| 2026 | Short Range Planning | Sec 5307 | \$160,000 | \$40,000 | \$200,000 |
| 2026 | Computer Equipment | Sec 5307 | \$80,000 | \$20,000 | \$100,000 |
| 2026 | Shop Equipment | Sec 5307 | \$80,000 | \$20,000 | \$100,000 |
| 2026 | ADA Operating Expense | Sec 5307 | \$580,000 | \$145,000 | \$725,000 |
| 2026 | Transit Enhancements | Sec 5307 | \$120,000 | \$30,000 | \$150,000 |
| 2026 | Purchase Office Equipment | Sec 5307 | \$32,000 | \$8,000 | \$40,000 |
| 2026 | Purchase Communication Equipment | Sec 5307 | \$80,000 | \$20,000 | \$100,000 |
| 2026 | Purchase Revenue Vehicles | Sec 5339 a/b/c | \$1,840,000 | \$460,000 | \$2,300,000 |
| 2026 | Purchase Support Vehicles | Sec 5307, 5339a | \$184,000 | \$46,000 | \$230,000 |
| 2026 | JARC Purchased Transportation | Sec 5307 | \$430,000 | \$0 | \$430,000 |
| 2026 | Mobility Manager | Sec 5307 | \$68,000 | \$17,000 | \$85,000 |
| Totals | | | \$12,664,000 | \$6,696,000 | \$19,360,000 |



Mississippi Gulf Coast Metropolitan Planning Organization

FY2025-2028 Transportation Improvement Program (TIP)

Federal Transit Administration (FTA) Program of Projects (POP)

Coast Transit Authority FY2027 TIP

| FY | Project | Fund Source | FTA | CTA | Total |
|---------------|----------------------------------|----------------|---------------------|--------------------|---------------------|
| 2027 | Operating Assistance For Period | Sec 5307 | \$5,050,000 | \$5,050,000 | \$10,100,000 |
| 2027 | Preventive Maintenance | Sec 5307, 5310 | \$4,320,000 | \$1,080,000 | \$5,400,000 |
| 2027 | Short Range Planning | Sec 5307 | \$160,000 | \$40,000 | \$200,000 |
| 2027 | Computer Equipment | Sec 5307 | \$80,000 | \$20,000 | \$100,000 |
| 2027 | Shop Equipment | Sec 5307 | \$80,000 | \$20,000 | \$100,000 |
| 2027 | ADA Operating Expense | Sec 5307 | \$608,000 | \$152,000 | \$760,000 |
| 2027 | Transit Enhancements | Sec 5307 | \$120,000 | \$30,000 | \$150,000 |
| 2027 | Purchase Office Equipment | Sec 5307 | \$40,000 | \$10,000 | \$50,000 |
| 2027 | Purchase Communication Equipment | Sec 5307 | \$80,000 | \$20,000 | \$100,000 |
| 2027 | Purchase Revenue Vehicles | Sec 5339 a/b/c | \$1,840,000 | \$460,000 | \$2,300,000 |
| 2027 | Purchase Support Vehicles | Sec 5339a | \$184,000 | \$46,000 | \$230,000 |
| 2027 | JARC Purchased Transportation | Sec 5307 | \$450,000 | \$0 | \$450,000 |
| 2027 | Mobility Manager | Sec 5307 | \$72,000 | \$18,000 | \$90,000 |
| Totals | | | \$13,084,000 | \$6,946,000 | \$20,030,000 |



Mississippi Gulf Coast Metropolitan Planning Organization

FY2025-2028 Transportation Improvement Program (TIP)

Federal Transit Administration (FTA) Program of Projects (POP)

Coast Transit Authority FY2028 TIP

| FY | Project | Fund Source | FTA | CTA | Total |
|---------------|----------------------------------|----------------|---------------------|--------------------|---------------------|
| 2028 | Operating Assistance For Period | Sec 5307 | \$5,300,000 | \$5,300,000 | \$10,600,000 |
| 2028 | Preventive Maintenance | Sec 5307, 5310 | \$4,480,000 | \$1,120,000 | \$5,600,000 |
| 2028 | Short Range Planning | Sec 5307 | \$160,000 | \$40,000 | \$200,000 |
| 2028 | Computer Equipment | Sec 5307 | \$80,000 | \$20,000 | \$100,000 |
| 2028 | Shop Equipment | Sec 5307 | \$80,000 | \$20,000 | \$100,000 |
| 2028 | ADA Operating Expense | Sec 5307 | \$640,000 | \$160,000 | \$800,000 |
| 2028 | Transit Enhancements | Sec 5307 | \$120,000 | \$30,000 | \$150,000 |
| 2028 | Purchase Office Equipment | Sec 5307 | \$40,000 | \$10,000 | \$50,000 |
| 2028 | Purchase Communication Equipment | Sec 5307 | \$80,000 | \$20,000 | \$100,000 |
| 2028 | Purchase Revenue Vehicles | Sec 5339 a/b/c | \$1,840,000 | \$460,000 | \$2,300,000 |
| 2028 | Purchase Support Vehicles | Sec 5339a | \$184,000 | \$46,000 | \$230,000 |
| 2028 | JARC Purchased Transportation | Sec 5307 | \$470,000 | \$0 | \$470,000 |
| 2028 | Mobility Manager | Sec 5307 | \$76,000 | \$19,000 | \$95,000 |
| Totals | | | \$13,550,000 | \$7,245,000 | \$20,795,000 |



FY2024-FY2027 Transportation Improvement Program Mid-Year Update

Federal Highway Administration
Eastern Federal Lands Highway Division

Last Printed: 6/3/2024

| PROJECT | PROGRAM FISCAL YEAR | STATE | COUNTY | PARK, REFUGE, FOREST OR OTHER PARTNER/AGENCY | DESCRIPTION | TYPE OF WORK | PRIMARY FUND SOURCE | TOTAL PROGRAMMED AMOUNT | FUNDS FROM TITLE | DELIVERED BY | STATUS | CONGRESSIONAL DISTRICT | FLMA REGION |
|----------------------------|---------------------|-------|--------------------|--|---|--------------|---------------------|-------------------------|------------------|--------------|--------------|------------------------|-------------|
| Mississippi | | | | | | | | | | | | | |
| MS CE OKDA BRG(1) | 2025 | MS | Lauderdale | Okatibbee Dam | Okatibbee Dam Bridge | BR | FLTP - USACE | \$360,000.00 | Title 23 | USACE | Planned | MS-03 | USACE-SA |
| MS ERFO FW HILL 2020-1(1) | 2024 | MS | Holmes | Hillside National Wildlife Refuge | 2020 MS FWS February Flooding | Misc | ERFO | \$2,455,831.00 | Title 23 | EFL | In Design | MS-02 | FWS-2-SW |
| MS ERFO NPS VICK 2020-1(2) | 2025 | MS | Warren | Vicksburg National Military Park | 2020 MS NPS February Flooding | LSR_3RH | ERFO | \$8,835,000.00 | Title 23 | EFL | In Design | MS-02 | NPS-SER |
| MS FLAP 102 | 2024 | MS | Stone | U.S. Forest Service - Desoto National Forest | West McHenry Road Bridge Replacement | BR | FLAP - EFL | \$1,617,500.00 | Title 23 | Local | Construction | MS-04 | FS-08-South |
| MS FLAP 115 | 2025 | MS | Wilkinson | Homochitto National Forest | SA 079-087 & SA 079-088 | BR | FLAP - EFL | \$1,422,500.00 | Title 23 | State | In Design | MS-03 | FS-08-South |
| MS FLAP 116 | 2024 | MS | Lincoln | Homochitto National Forest | SA 043-223, Bridge, and Approaches | BR | FLAP - EFL | \$1,040,400.00 | Title 23 | State | Construction | MS-03 | FS-08-South |
| MS FLAP 59 | 2025 | MS | Smith | Blenville National Forest | Smith Co 330(10)B Bridge Replacement | BR | FLAP - EFL | \$390,000.00 | Title 23 | Local | In Design | MS-03 | FS-08-South |
| MS FLAP 69 | 2025 | MS | Adams | St. Catherine's Creek National Wildlife Refuge | Bourke Road Bridge Replacement | BR | FLAP - EFL | \$753,000.00 | Title 23 | Local | Planned | MS-06 | FWS-4-SE |
| MS FLAP 85 | 2024 | MS | Amite | Homochitto National Forest | EFLAP-SA03-134 | BR | FLAP - EFL | \$3,790,000.00 | Title 23 | State | Construction | MS-03 | FS-08-South |
| MS FLAP 94 | 2025 | MS | Adams | St. Catherine's Creek National Wildlife Refuge | York Road Bridge | BR | FLAP - EFL | \$606,555.00 | Title 23 | Local | In Design | MS-03 | FWS-4-SE |
| MS FLTP FW DCC(1) | 2025 | MS | Lee | Private John Allen National Fish Hatchery | Rehabilitate Routes 10, 901, and 902- Private John Allan National Fish Hatchery | 3R | FLTP - FWS | \$1,989,750.00 | Title 23 | FWS | Planned | MS-01 | FWS-4-SE |
| MS FLTP FW DHM(1) | 2025 | MS | Bolivar | Dahomey National Wildlife Refuge | Bear Road | 3R | FLTP - FWS | \$260,911.88 | Title 23 | FWS | Planned | MS-02 | FWS-4-SE |
| MS FLTP FW PNS(1) | 2026 | MS | Yazoo | Panther Swamp National Wildlife Refuge | Replace Wade Bayou Bridge | BR_New | FLTP - FWS | \$705,138.00 | Title 23 | FWS | Planned | MS-02 | FWS-4-SE |
| MS NP GUI5 15(4) | 2024 | MS | Jackson | Gulf Islands National Seashore | Reconstruct 0.5 Miles of Park Road from McGhee Road to the Visitor Center | 4R | FLTP - NPS | \$9,390,000.00 | Title 23 | EFL | Construction | MS-04 | NPS-SER |
| MS NP NATR 3F26 | 2026 | MS | Webster & Chicksaw | Natchez Trace Parkway | MS NP NATR 3F26 | 3R | FLTP - NPS | \$12,155,000.00 | Title 23 | EFL | In Design | MS-01 | NPS-SER |
| MS NP NATR 3N18 3H27 ETC | 2024 | MS | Madison | Natchez Trace Parkway | MS NP NATR 3N18 3H27 ETC | 4R | GAOA | \$40,000,000.00 | Title 54 | EFL | Construction | Various | NPS-SER |
| MS NP NATR 3N19 3H28 | 2024 | MS | Madison | Natchez Trace Parkway | MS NP NATR 3N19 3H28 | 4R | GAOA | \$67,980,237.00 | Title 54 | EFL | Construction | Various | NPS-SER |
| MS NP NATR 3P27 | 2024 | MS | Various | Natchez Trace Parkway | MS NP NATR 3P27 | Trail | FLTP - NPS | \$2,400,000.00 | Title 23 | EFL | Construction | Various | NPS-SER |
| MS NP NATR 3P28 | 2024 | MS | Madison | Natchez Trace Parkway | Reconstruct Parkway in Ridgeland MP 101-102.35 | 3R | FLTP - NPS | \$4,000,000.00 | Title 23 | EFL | Construction | MS-03 | NPS-SER |
| MS NP NATR 3P29 | 2027 | MS | Madison, Hinds | Natchez Trace Parkway | Reconstruct RI Parkway from MP86-927 | 3R | FLTP - NPS | \$15,574,000.00 | Title 23 | EFL | Planned | MS-02 | NPS-SER |
| MS NP NATR 5570-463P | 2025 | MS | Williamson | Natchez Trace Parkway | Install Suicide Deterrent Barrier for TN Route 96 Bridge | Study | FLTP - NPS | \$6,800,000.00 | Title 23 | EFL | In Design | TN-07 | NPS-SER |

Approval signature is shown on first page packet only. The listing reflects all newly identified and programmed and/or modified projects as of May 31, 2024.



FY2024-FY2027 Transportation Improvement Program Mid-Year Update

Federal Highway Administration
Eastern Federal Lands Highway Division

Last Printed: 6/3/2024

| PROJECT | PROGRAM FISCAL YEAR | STATE | COUNTY | PARK, REFUGE, FOREST OR OTHER PARTNER/AGENCY | DESCRIPTION | TYPE OF WORK | PRIMARY FUND SOURCE | TOTAL PROGRAMMED AMOUNT | FUNDS FROM TITLE | DELIVERED BY | STATUS | CONGRESSIONAL DISTRICT | FLMA REGION |
|-------------------------|---------------------|-------|-------------------|--|--|--------------|---------------------|-------------------------|------------------|--------------|--------------|------------------------|-------------|
| MS NP NATR BMS FY24(1) | 2024 | MS | Various | Natchez Trace Parkway | Bridge Preventative Maintenance Projects | BR1R | FLTP - NPS | \$550,000.00 | Title 23 | EFL | Construction | Various | NPS-SER |
| NP NATR 3Q9, 3P26, 3O23 | 2027 | MS | Hinds and Madison | Natchez Trace Parkway | Reconstruct Parkway from MP 86.8 to MP 92.7 (Old) | 4R | FLTP - NPS | \$15,574,000.00 | Title 23 | EFL | Planned | MS-03 | NPS-SER |
| NP NATR BMS FY25(1) | 2025 | MS | Various | Natchez Trace Parkway | Repair Bridge Repair Bridges - NATR BMS FY25 IDIQ | BR | FLTP - NPS | \$500,000.00 | Title 23 | EFL | In Design | MS-01 | NPS-SER |
| NP NATR BMS FY26(1) | 2026 | MS | Various | Natchez Trace Parkway | NATR Bridge Preventative Maintenance Projects FY26 | BR | FLTP - NPS | \$500,000.00 | Title 23 | EFL | In Design | Various | NPS-SER |
| NP SER BMS FY26(1) | 2026 | MS | Various | Southeast Regional Office | SER Bridge Preventative Maintenance Projects in FY26 | BR | FLTP - NPS | \$500,000.00 | Title 23 | EFL | In Design | Various | NPS-SER |



**MISSISSIPPI DEPARTMENT OF TRANSPORTATION
2025 - 2028 STATEWIDE TRANSPORTATION IMPROVEMENT PROGRAM
GULF COAST URBANIZED AREA GROUPED PROJECTS**

Bridge Replacement

| Fiscal Year | Agency | Fund Source | Federal Share | State Share | Total Funds |
|---|----------|------------------------------------|----------------------|---------------------|----------------------|
| 2025 | MDOT/LPA | State/Local/Eligible Federal Funds | \$16,000,000 | \$4,000,000 | \$20,000,000 |
| 2026 | MDOT/LPA | State/Local/Eligible Federal Funds | \$38,800,000 | \$9,700,000 | \$48,500,000 |
| 2027 | MDOT/LPA | State/Local/Eligible Federal Funds | \$38,800,000 | \$9,700,000 | \$48,500,000 |
| 2028 | MDOT/LPA | State/Local/Eligible Federal Funds | \$38,800,000 | \$9,700,000 | \$48,500,000 |
| SUB-TOTAL FOR Bridge Replacement : | | | \$132,400,000 | \$33,100,000 | \$165,500,000 |

Operation/Maintenance/Minor Reconstruction

| Fiscal Year | Agency | Fund Source | Federal Share | State Share | Total Funds |
|---|----------|------------------------------------|---------------------|---------------------|---------------------|
| 2025 | MDOT/LPA | State/Local/Eligible Federal Funds | \$40,000,000 | \$10,000,000 | \$50,000,000 |
| 2026 | MDOT/LPA | State/Local/Eligible Federal Funds | \$7,200,000 | \$1,800,000 | \$9,000,000 |
| 2027 | MDOT/LPA | State/Local/Eligible Federal Funds | \$7,200,000 | \$1,800,000 | \$9,000,000 |
| 2028 | MDOT/LPA | State/Local/Eligible Federal Funds | \$7,200,000 | \$1,800,000 | \$9,000,000 |
| SUB-TOTAL FOR Operation/Maintenance/Minor Reconstruction : | | | \$61,600,000 | \$15,400,000 | \$77,000,000 |

Safety

| Fiscal Year | Agency | Fund Source | Federal Share | State Share | Total Funds |
|-------------------------------|----------|------------------------------------|--------------------|------------------|--------------------|
| 2025 | MDOT/LPA | State/Local/Eligible Federal Funds | \$1,000,000 | \$111,111 | \$1,111,111 |
| 2026 | MDOT/LPA | State/Local/Eligible Federal Funds | \$1,000,000 | \$111,111 | \$1,111,111 |
| 2027 | MDOT/LPA | State/Local/Eligible Federal Funds | \$1,000,000 | \$111,111 | \$1,111,111 |
| 2028 | MDOT/LPA | State/Local/Eligible Federal Funds | \$1,000,000 | \$111,111 | \$1,111,111 |
| SUB-TOTAL FOR Safety : | | | \$4,000,000 | \$444,444 | \$4,444,444 |

TAP/TE/Recreational Trails/SRTS/Scenic Byways

| Fiscal Year | Agency | Fund Source | Federal Share | State Share | Total Funds |
|--|----------|------------------------------------|----------------------|---------------------|----------------------|
| 2025 | MDOT/LPA | State/Local/Eligible Federal Funds | \$1,000,000 | \$250,000 | \$1,250,000 |
| 2026 | MDOT/LPA | State/Local/Eligible Federal Funds | \$1,000,000 | \$250,000 | \$1,250,000 |
| 2027 | MDOT/LPA | State/Local/Eligible Federal Funds | \$1,000,000 | \$250,000 | \$1,250,000 |
| 2028 | MDOT/LPA | State/Local/Eligible Federal Funds | \$1,000,000 | \$250,000 | \$1,250,000 |
| SUB-TOTAL FOR TAP/TE/Recreational Trails/SRTS/Scenic Byways : | | | \$4,000,000 | \$1,000,000 | \$5,000,000 |
| Grand Total : | | | \$202,000,000 | \$49,944,444 | \$251,944,444 |

The projects contained in this "Grouped" list are not individually listed in the STIP. These projects individually or cumulatively have no significant environmental impact and therefore are deemed Categorical Exclusions. Additional grouped projects may be found in other volumes of the STIP. The fund source column above represents every FHWA Apportioned and Allocated funds, and /or non-federal funds.



**MISSISSIPPI DEPARTMENT OF TRANSPORTATION
2025 - 2028 STATEWIDE TRANSPORTATION IMPROVEMENT PROGRAM
MDOT ALL STIP PROJECTS**

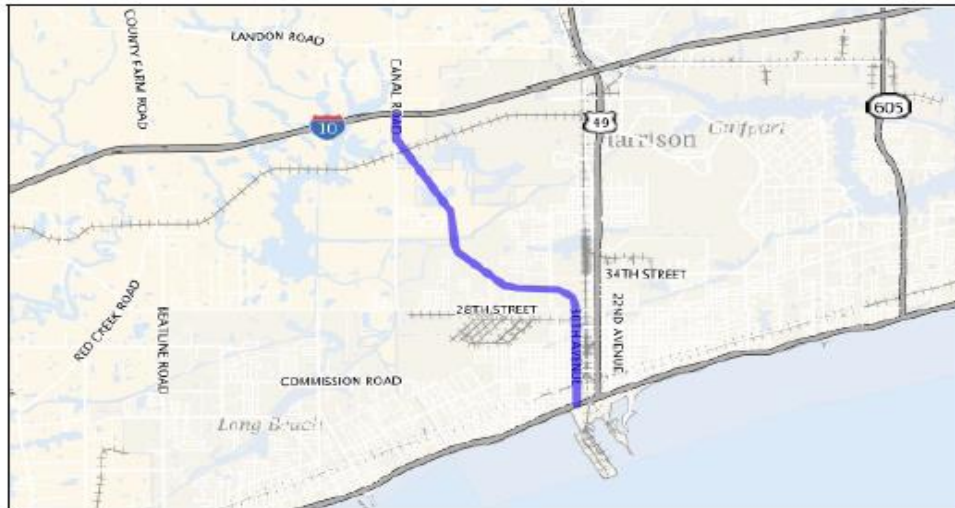
County: Harrison

STIP ID: 240200 **Project Title:** SR 601/CANAL ROAD HARRISON COUNTY - DEBT SERVICE **Total Project Cost:** \$130,000,000

Route: MS 601/CANAL ROAD **Project Length:** 5 Miles **Fund Source:** STBG/NHPP/BOND/SFP

| Project # | FY | Scope of Work | Resp Agcy | Phase | Fed | State/Local | Total Cost Est |
|---|------|-------------------------|-----------|--------|---------------------|--------------------|---------------------|
| 501561/602000 | 2025 | Grade Drain Bridge Pave | MDOT | OTH/AC | \$8,641,600 | \$1,680,400 | \$8,302,000 |
| Termini: SR 601 (CANAL RD) BT PORT/I-10 | | | | | | | |
| 501561/602002 | 2025 | Grade Drain Bridge Pave | MDOT | OTH/AC | \$2,168,664 | \$542,166 | \$2,710,830 |
| Termini: H.E.L.P. Projects - Debt Service Harrison (B) | | | | | | | |
| 501561/602000 | 2028 | Grade Drain Bridge Pave | MDOT | OTH/AC | \$6,704,800 | \$1,676,200 | \$8,381,000 |
| Termini: SR 601 (CANAL RD) BT PORT/I-10 | | | | | | | |
| 501561/602002 | 2026 | Grade Drain Bridge Pave | MDOT | OTH/AC | \$2,168,664 | \$542,166 | \$2,710,830 |
| Termini: H.E.L.P. Projects - Debt Service Harrison (B) | | | | | | | |
| 501561/602002 | 2027 | Grade Drain Bridge Pave | MDOT | OTH/AC | \$2,168,664 | \$542,166 | \$2,710,830 |
| Termini: H.E.L.P. Projects - Debt Service Harrison (B) | | | | | | | |
| 501561/602002 | 2028 | Grade Drain Bridge Pave | MDOT | OTH/AC | \$2,168,664 | \$542,166 | \$2,710,830 |
| Termini: H.E.L.P. Projects - Debt Service Harrison (B) | | | | | | | |
| SUB-TOTAL FOR STIP ID 240200 : | | | | | \$22,021,056 | \$5,505,264 | \$27,526,320 |

This project details the repayment of debt service on a \$102,000,000 HELP bond issue for the construction of Canal Road. This project uses Advance Construction. See the explanation in the Introduction for a description of this funding technique.





MISSISSIPPI DEPARTMENT OF TRANSPORTATION
2025 - 2028 STATEWIDE TRANSPORTATION IMPROVEMENT PROGRAM
MDOT ALL STIP PROJECTS

County: Jackson

STIP ID: 300082 **Project Title:** US 90 from SR 609 to DOLPHIN DRIVE **Total Project Cost:** \$200,000,000
Route: US 90 from SR 609 to DOLPHIN DRIVE **Project Length:** Miles **Fund Source:** Discretionary/Earmark/SFP/STBG/NHPP

| Project # | FY | Scope of Work | Resp Agcy | Phase | Fed | State/Local | Total Cost Est |
|---|------|---------------|-----------|-------|---------------------|----------------------|----------------------|
| 106325/301000 | 2025 | Add 2 Lanes | MDOT | CON | \$3,100,000 | \$156,900,000 | \$160,000,000 |
| Termini: US 90 from SR 609 to Dolphin Drive | | | | | | | |
| 106325/302000 | 2025 | Add 2 Lanes | MDOT | CON | \$12,000,000 | \$3,000,000 | \$15,000,000 |
| Termini: US 90 from SR 609 to Dolphin Drive - PED Path | | | | | | | |
| SUB-TOTAL FOR STIP ID 300082 : | | | | | \$15,100,000 | \$159,900,000 | \$175,000,000 |



APPENDIX

MS Gulf Coast TIP: Updates, Amendments and Modifications Tracker

October 2013 Amendments/Modifications:

- Gulfport – Pass Road Traffic Signals/16 intersections - \$444,000 STP
- Jackson County – Hwy 609/Old Fort Bayou Rd - \$1,493,640 STP
- D'Iberville – Big Ridge Rd & D'Iberville Blvd/1-10, Dewey Lawrence, South - \$2,938,778 STP
- Jackson County – Lemoyne Blvd/Brittany Ave - \$308,000 STP
- Gulfport – Courthouse Rd/Pass Rd to US 90 - \$2,683,532 STP
- Bay St. Louis – Old Spanish Trail Lighting/Main St to City Limits - \$640,640 STP

Increase Funding (amendment)

- Biloxi - Popp's Ferry /Cedar Lake to D'Iberville Blvd - Add \$5,000,000 STP for a total of \$7,204,800 STP
- Pascagoula – Hospital Rd/Old Mobile Hwy to US 90 – Add \$1,798,817 STP for a total of \$2,293,217 STP
- Gautier – Martin Bluff Rd/Gautier-Vancleave Rd to Frontage Rd – Add \$2,392,005 STP for a total of \$3,328,005 STP

Remove Project (amendment)

- Pascagoula – Ingalls Ave/Chicot Rd. & Martin St. \$396,000 STP
- Harrison County – Hwy 605 Frontage Rd./Lorraine Rd to 2000' North - \$726,800 STP
- D'Iberville – Automall Pkwy & Rodriguez St./D'Iberville Blvd to I-110 - \$200,000 STP
- Gulfport – Seaway Rd Pedestrian Path/Three Rivers Rd to Lorraine Rd - \$788,304 STP

Modifications

- Biloxi - Popp's Ferry Rd/Cedar Lake Rd to D'Iberville Blvd – Move from FY 2013 to FY 2015
- Gulfport – 28th St/34th Ave to 23rd Ave – Move from FY 2012 to FY 2014
- Jackson County – Old Fort Bayou Rd/Yellow Jacket Rd - Move from FY 2014 to FY 2015
- Biloxi – Popp's Ferry Road Extension/Pass Road to US 90 – Move from FY 2012 to FY 2018
- Gulfport – Seaway Rd/Three Rivers Rd to 1 mile east – Move from FY 2013 to FY 2014
- Pascagoula – Hospital Rd/Old Mobile Hwy to US 90 – Move from FY 2015 to FY 2016
- Bay St Louis – Old Spanish Trl/City Limits to Main St – Move from FY 2013 to FY 2014
- Gautier – Martin Bluff Rd/Gautier-Vancleave Rd to Frontage Rd - Move from FY 2013 to FY 2016
- Gulfport - Deadeaux Rd/ Three Rivers rd to Hwy 605 – Move from FY 2013 to FY 2015
- Gulfport – Ship Island Terminal Project/ Bert Jones Yacht Basin – Move from FY 2013 to FY 2015
- Bay St. Louis – US 90 Pedestrian Path/BSL Bridge to Main St - Move from FY 2013 to FY 2015
- Ocean Springs – Government St/Hanley Rd to Hanshaw Rd - Move from FY 2013 to FY 2014
- D'Iberville – D'Iberville Blvd/Central Ave to Automall Pkwy - Move from FY 2013 to FY 2015
- Pass Christian – Cedar Ave/RR to US 90 - Move from FY 2015 to FY 2018

- Biloxi – Reynoir St and Jackson St/Downtown Biloxi – Move from FY 2014 to FY 2015
- Harrison County – Biloxi River Bridge/Lorraine Rd – Move from FY 2013 to FY 2014
- Gautier – Hwy 57/Brown Rd - Move from FY 2013 to FY 2015
- Moss Point – Main St/South to Jefferson - Move from FY 2013 to FY 2015
- Moss Point – Second St/East Moss Point - Move from FY 2014 to FY 2015

March 2014 Amendments/Modifications:

- Ocean Springs – Porter Ave/Martin Avenue to Howard Ave – Move from FY 2013 to FY 2018
- Gulfport – Deadeaux Road/Three Rivers Rd to Hwy 605 – Move from FY 2015 to FY 2016
- Bay St. Louis – US 90 Pedestrian Path/BSL Bridge to Main St – Move from FY 2015 to FY 2016
- D’Iberville – D’Iberville Blvd/Central Ave to Automall Pkwy - Move from FY 2015 to FY 2016
- Harrison County – Biloxi River Bridge/Lorraine Rd – Change from FY 2014 to FY 2015
- Gautier – Hwy 57/Brown Road - Change from FY 2015 to FY 2016
- Gulfport – Pass Road Signal System/16 intersections - Change from FY 2014 to FY 2015
- Gulfport – Courthouse Rd/Pass Rd to US 90 – Change from FY 2018 to FY 2017
- D’Iberville – D’Iberville Blvd and Big Ridge Rd/ I-10 ramps – Change from FY 2015 to FY 2016
- Bay St Louis – Old Spanish Trl/Main St to Waveland Limits - Change from FY 2015 to FY 2016

April 2014 Amendments/Modifications:

- Ocean Springs – Government St - Hanley to Hanshaw add funds - \$167,300

June 2014 Amendments/Modifications:

Amendments

- Ocean Springs – Porter Avenue/Martin Avenue to Howard Avenue. Remove Project.
- Jackson County – Hwy 57/Old Spanish Trl to US 90. Remove Project.
- CTA – Purchase replacement mobile surveillance equipment. \$128,000 (FTA) \$32,000 (CTA) Add Project.
- CTA – Expansion of the Gulfport Transit Center Intermodal Hub. \$6,560,000 (FTA) \$1,640,000 (CTA) Add Project.

October 2014 Amendments/Modifications:

Modifications

- Advance construction strategy was implemented

March 2015 Amendments/Modifications:

Modifications

- Added \$1,550,000 in TE funds under the TAP group in 2015

June 2015 Amendments/Modifications:

Modifications

- Harrison Co.–Biloxi River Bridge. Move \$3,000,000 STP into FY14 from FY15. Leave balance of \$1,211,197 STP in FY16.
- Gautier - Martin Bluff Rd. Add ROW Phase. \$3,199,682 Fed. Earmark
- CTA – Change funding fiscal year. Expansion of Gulfport Transit Center Intermodal Hub. Move and split \$6,560,000 in FY 2015 to FY 2016 (\$3,280,000) and FY 2017(\$3,280,000).

Group Project Adjustments

- D'Iberville – Add project to Safety Group. D'Iberville Blvd and Boney Ave. Traffic signal. \$125,000 STP at 100%.
- D'Iberville – Remove project from Bike/Ped/Transit Group. D'Iberville Blvd/Central Ave to Automall Pkwy. \$97,002 STP
- GRPC – Adjust funding for safety projects to reflect each county's MOU.
- Long Beach – Added study. Pineville Rd. \$60,000
- Diamondhead – Added study. Circulation. \$60,000

Amendments

Remove from TIP

- Gulfport – Ship Island Terminal Project. \$560,301 STP
- Pass Christian – Cedar Ave/ Railroad to US 90. \$163,570 STP

Add to TIP

- Waveland - Waveland Avenue Sidewalk Project: \$1,264,000 STP
- Gulfport - Landon Road Widening Project PH I: \$1,000,000 STP
- Gulfport - Airport Road Improvements: \$550,000 STP
- Pass Christian - North Street Sidewalks: \$452,800 STP

October 2015 Amendments/Modifications:

Amendment: Added to TIP

- Biloxi - Poppo Ferry Road. Submarine Cable. \$749,000 STP (Request made by MDOT)

November 2015 Amendments/Modifications:

- Move Moss Point Main Street sidewalks project from FY17 to FY18
- Move Jackson County Hwy 609 @ Old Fort Bayou from FY18 to FY19

- Move Pascagoula Hospital Road from FY17 & 18 to FY16 & 17
- Move Biloxi Pops Ferry Extension from FY19 to FY18
- Adjust D'Iberville Big Ridge Road project AC funding split
- Move Gulfport Courthouse Road project from FY17&18 to FY16&17
- Move Gautier Martin Bluff Road project from FY16 & 17 to FY17 &18
- Adjust Biloxi River Bridge AC funding split
- Move Jackson County Lemoyne Blvd @ Brittany Ave from FY16 to FY17

June 2016 Amendments and Modifications

- Add MDOT project: Bridge Group #107213-10100 (FY2016) I-10 Widening from Hwy 57 to the Alabama State Line. (Funding for preliminary engineering phase – total \$750,000 (\$600,000 Federal, \$150,000 State/Local))
- Increase Funds \$259,260 for Gulfport's Dedeaux Road project
- Increase Funds \$676,270 for Gulfport's Courthouse Road project
- Increase Funds \$1,208,133 for Gulfport's Landon Road project
- Remove Gautier Hwy 57 & Brown Road Signal Project at LPA request
- Remove D'Iberville Big Ridge and D'Iberville Blvd Project at LPA request
- Add Waveland, Nicholson Ave overlay and widening, \$800,000 STP
- Add Diamondhead, Golf Club Drive Roundabout, \$200,00 STP
- Add Diamondhead, I-10 interchange lighting, \$400,00 STP
- Add Long Beach, Pineville Road sidewalks, \$1,000,000 STP
- Add D'Iberville Pops Ferry Realignment, \$2,938,779 STP
- Add Jackson Co. Signal at Lemoyne and McCann, \$360,000 STP
- Add Jackson Co. Yellow Jacket Street sidewalks, \$160,000 TAP
- Add Gulfport Seaway Road Multiuse Pathway, \$788,304 TAP
- Add Bay-Waveland School District Pine street sidewalks, \$244,000 TAP

Coast Transit Authority (CTA) Amendment(s):

- Sec 5307 Preventive Maintenance Increase to total \$1,663,000 (federal \$1,330,400, local \$332,600)
- Sec 5307 JARC Purchased Transportation Increase to total \$380,000 (federal \$380,000, local \$0)
- Sec 5310 New Freedom Services Increase to total \$840,000 (federal \$672,000, local \$168,000)
- Sec 5307 Mobility Manager Increase to total \$75,000 (federal \$60,000, local \$15,000)
- Sec 5307 Gulfport Intermodal Hub Increase to total \$8,345,000 (federal \$6,676,000, local \$1,669,000)
- Add New Project: Sec 5339 Gulfport Hwy 90 Tram Bridge Project Total \$9,856,000 (federal \$7,884,800, local \$1,971,200)

September 2016 Amendments/Modifications:

- Lemoyne and Brittany (Jackson Co.) received additional funds and was moved to 2016
- Courthouse Road (Gulfport) received additional funds and was moved to 2016
- Dedeaux Road (Gulfport) received additional funds and was moved to 2016
- Main Street (Moss Point) sidewalks were moved into 2016
- Hospital Road (Pascagoula) was divided into two projects (Phase 1 in FY16, Phase 2 in FY17)

February 2017 Amendments and Modifications**Amendments:**

- Remove Bay St Louis, Old Spanish Trail lighting (\$640,640 STP)
- Remove Bay St Louis, Hwy 90 multiuse pathway (\$164,800 STP)
- Add Diamondhead, Aloha Dr widened shoulder (\$136,400 TAP)
- Add Diamondhead, Noma Dr multiuse pathway (\$430,400 TAP)
- Add Diamondhead, Golf Club Dr sidewalk extension (\$400,000 STP)
- Add Ocean Springs, Porter Ave bike/ped improvements (\$930,000 STP)
- Add Gulfport, Ship Island Ferry program upgrades (\$1,156,913 Earmark)
- Add Gulfport, Hwy 90 and 20th Ave Improvements (\$507,169 STP)
- Funding Increase, Gulfport, Dedeaux Rd by \$1,573,635 STP in FY17
- Funding Increase, Gulfport, Courthouse Rd by \$623,598 STP in FY17

Coast Transit Authority (CTA) Amendment(s):

- CTA Funding Increase: Computer Equipment, Sec 5307 increase from \$16,000 to \$24,000
- CTA Additional Funds: Expand Gulfport Multimodal Hub, Sec 5307 \$8,878,408 FY18
- CTA Additional Funds: Gulfport/Hwy 90 Bike/Ped/Tram Bridge, Sec 5339 \$8,925,500 FY18

Modifications:

- Bay-Waveland School District, Pine Street moved FY17 to FY18
- Gulfport, Seaway Road moved from FY17 to FY18
- Gulfport, Airport Road moved FY17 to FY19
- Jackson Co, Lemoyne/McCann moved from FY17 to FY18
- Jackson Co, Hwy 609 & Old Fort Bayou moved from FY19 to FY20
- Jackson Co, St. Martin N Elementary moved from FY20 to FY18
- D'Iberville Boney/D'Iberville Blvd moved from FY17 to FY18

- D'Iberville Poppo Ferry Realignment advance construction over FY18 and FY19
- Biloxi Poppo Ferry Extension advance construction over FY18 and FY19
- Diamondhead, Golf Club Drive Roundabout moved from FY18 to FY17
- Waveland, Waveland Ave moved from FY19 to FY18
- Long Beach, Pineville Road moved from FY20 to FY17

May 2017 Amendments & Modifications

Amendments:

- Long Beach, Changed Pineville Road project termini from Alexander Road to Harper-McCann School
- ~~Waveland, Changed Waveland Ave project termini from Dubuc Lane to the city park south of CSX RR tracks~~ *City elected not to change termini*
- Gulfport, Add Ship Island Ferry Terminal Improvement Project, Earmark Funds \$1,156,913

Modifications:

- Pascagoula, Decrease Hospital Road Phase 2 FY17 STP/Non-urban funds by \$142,274, total is \$1,250,943
- Pascagoula, Increase Hospital Road Phase 1 FY16 STP/Non-urban funds by \$356,766, total is \$1,256,766
- Biloxi, move Poppo Ferry Extension from FY18/19 to FY19/20
- Gulfport, Add \$383,000 STP to Courthouse Road in FY17
- Hancock Co, Change Beach Access Study termini from Buccaneer State Park to Lakeshore Drive
- GRPC, Add STP group funds to Get To B safety projects, phase 2 development \$150,000
- GRPC, Add STP group funds to Get To B professional development safety series \$12,000
- Jackson Co, Add STP group funds to the Countywide Bike Plan Study, increase from \$80,000 to \$91,463

August 2017 Amendments & Modifications

Amendments:

- Removal of 3 Diamondhead projects from the TIP: Golf Cart Drive Sidewalks, Golf Cart Drive Roundabout & Noma Drive Multi-use Pathway
- Removal of Biloxi Sidewalk project on Reynoir and Jackson Streets

Modifications:

- Waveland, increase funds for FY17 Waveland Sidewalk Study from \$80,000 to \$82,641
- Biloxi, add the Biloxi Rail Corridor Study for \$150,000 FY18 STP-Study Group
- Pascagoula, Move Hospital Road Ph. 2 from FY17 to FY18
- Bay St Louis, Move Carrol Ave SRTS project from FY17 to FY18
- Diamondhead, Move I-10 lighting project to FY18 to align with MDOT reconstruction project
- Gautier, Remove Advance Construction for Martin Bluff Road, project in FY19
- D'Iberville, Remove Advance Construction for Poppo Ferry Realignment, project in FY20
- Long Beach, Termini Correction on Pineville Rd sidewalks from Royal Dr to Willow Creek Dr
- Biloxi, include TIP Page for Poppo Ferry Bridge replacement earmark funds (not programmed at this time)

December 2017 Amendments & Modifications

Amendments:

- Pascagoula, Increase Hospital Road Phase 1 funds by \$55,706, new total is \$1,312,472
- Pascagoula, Increase Hospital Road Phase 2 funds by \$293,852 and \$170,140 for RR costs, new total is \$1,714,935

Modifications:

- D'Iberville, Increase Boney Ave Signal STP allocation by \$73,500, new total is \$198,950
- Diamondhead, increase STP allocation for I-10 lighting project by \$48,485, new total is \$448,485

January 2018 Amendments & Modifications

Modifications:

- Gautier, Split project between FY19 & 20, adjust Non-Urban funds allocation to reflect available balances and shift remaining funding to STP-TMA as the funding source. All totals remain the same.
- GRPC Traffic Signal Prioritization Project funding increase from \$40,000 to \$50,000 in FY2018
- Jackson County, Shift the McCann Road Overpass Study from FY17 to FY18 to reflect actual obligation year
- Biloxi, Adjust ROW phase for Popp's Ferry Road Extension. Shift from FY17 to FY18 and update earmark funds with available federal balances. ROW costs exceeded available federal funds, city is covering balance so match will exceed the original 20% match requirement.

March 2018 Amendments & Modifications

Amendments:

- Biloxi, Increase funds for Popp's Ferry Submarine Cable by \$429,000. Increase from \$749,000 to \$1,178,000

Modifications:

- Diamondhead, Include a technical study on E. Aloha drive from Veterans to Kalani Drive in the FY18 study/projects group
- Pass Christian, include replacement of the Clark Ave. Bridge in the FY18 study/projects group

NOTE: at March 1 MPO-TPC meeting new TIP handbook policies were adopted which included a funding increase cap of 20%. This applies to project totals currently on the 2017-2020 TIP and original award totals of projects added to the TIP after March 1, 2018.

April 2018 Amendments & Modifications

Modification:

- Diamondhead, Increase funds for Interchange lighting project by \$89,697 STBG. Increase from \$448,485 to \$538,182 which maxes out their 20% increase capacity for this project.
- Jackson County, Move St. Martin N. Elementary sidewalk project from FY18 to FY19
- Pass Christian, Move Clark Street bridge replacement project from FY18 to FY19

August 2018 Amendments & Modifications

Amendments:

- Gulfport, Landon Road add \$751,867 STBG. Increase from \$2,208,133 to \$2,960,000 STBG
- Bay-Waveland School District, remove Pine St. sidewalk project from the TIP
- Gulfport, Add Dedeaux Rd (Ph. 2) Hwy 605 to Jessica Ln. to TIP Illustrative List \$3,760,000
- Bay St Louis, Add Beyer Dr. sidewalks from Carrol Ave. to Ranch St. in FY19, \$280,000 TAP
- Diamondhead, Add Montjoy Creek pathway from Diamondhead Drive to Rotten Bayou in FY 19, \$80,000 TAP
- Hancock Co., Add Washington St. Accessibility around S. Beach Blvd to FY19, \$240,000 TAP
- USM-Gulf Park, Add Gulf Park Dr. sidewalk from Bear Point to north of Hardy Hall in FY19, \$231,400 TAP
- Gulfport, Add Old Hwy 49 sidewalk from Oak Ln. to Robinson Rd. in FY20, \$160,000 TAP
- Gulfport, Add multiple school zone improvement projects to FY20, \$210,278 STBG
- Biloxi, Add Main St. and CSX rail line crossing to FY20, \$150,000 STBG
- Ocean Springs, Add East Beach Dr. from Holcomb Blvd. to Halstead Rd. to FY20, \$384,000 STBG (BPT)
- Bay St Louis, Add Washington St. sidewalks from Old Spanish Trl. To St. Francis St. in FY20, \$120,000 STBG (BPT)
- Ocean Springs, Add Ocean Springs Rd. from US 90 to Culeoka Dr. to FY21, \$2,258,400 STBG
- Moss Point, Add Jefferson St. sidewalks to include portion on Main St to 2nd St. to FY21, \$412,000 Non-urban STBG
- Harrison Co, Add Landon Rd. reconstruction from Coleman Rd. to 34th St. to FY21, \$1,360,000 STBG
- Long Beach, Add Pinville sidewalks ph. II from Harper MCCAughan to Klondyke Rd. to FY21, \$400,000 STBG (BPT)
- Long Beach, Add Klondyke and Commission Rd. intersection to FY22, \$760,000 STBG
- Biloxi, Add Woolmarket Rd. sidewalks from Airport Rd. to Lorraine Rd. in FY22, \$880,000 TAP
- Moss Point, Add Macphelah Rd. and Jefferson St. intersection to FY22, \$509,000 Non-urban STBG
- Waveland, Change termini on Nicholson Ave. from Beach Blvd. to Jeff Davis Ave.

Modifications:

- Gulfport, Seaway Road add \$157,660 funds. Increase from \$788,304 to \$945,964.
- Biloxi Woolmarket Sidewalks – Changed funding source from TAP to STBG
- Gulfport, 20th Ave. move from FY18 to FY19 (obligated in FY18)
- Diamondhead, E. Aloha Dr. move from FY18 to FY19
- Biloxi, Popp's Ferry Extension. Move from FY 19 to FY22.
- Gulfport, Airport Rd. Move project to the Illustrative List

- Biloxi, move Popps Ferry bridge replacement to TIP Illustrative List, no MPO funds
- D'Iberville, move Popps Ferry Rd. from D'Iberville Blvd. to Belle St. to TIP Illustrative List \$2,938,780

October 2018 Modifications and Amendments

- Waveland - Waveland Ave Sidewalks, add \$210,560 TAP - From \$1,052,800 to \$1,263,360
- Biloxi - Cedar Lake Bridge - Move all funds for project into FY 22 \$300,000 +\$260,000

November 2018 Modifications and Amendments

- Diamondhead - Move East Aloha Study from FY18 to FY19 - **MODIFICATION**
- City of Gulfport - Approve US 49 Pedestrian Study - \$120,000 STBG \$150,000 Total - **MODIFICATION (11-29 TPC)**
- City of Gulfport - Courthouse Road - add \$192,000 from \$4,336,400 to \$4,528,400 - **MODIFICATION**

February 2019 Modifications and Amendments

- Clark Ave Bridge project LPA change from Pass Christian to Harrison County - **MODIFICATION**

March 2019 Modifications and Amendments

- Moss Point Interstate Commerce Area Study \$80,000 STP - **MODIFICATION by poll vote**
- City of Gulfport - Courthouse Road - add \$180,000 (for improvements to rough surface) **MODIFICATION**
- City of Gulfport - Landon Road - Break out RR work from approved total - **MODIFICATION**

April 2019 Modifications and Amendments

- Jackson County - St. Martin Elementary Sidewalks TAP - Increase from \$160,000 to \$192,000 **MODIFICATION**

May 2019 Modifications and Amendments

- MDOT - bridge replacement project on US 49 between O'Neal Road and School Road. \$5,000,000 TOTAL **AMENDMENT**

July 2019 Modifications and Amendments

- MDOT - add \$6,500,000 to MDOT's Gulf Coast UZA 2019 Safety Group - **MODIFICATION**
- Pascagoula - add Market Street Signalization Project. \$745,000 (HIPF) - **AMENDMENT**
- Moss Point - Combine Jefferson Ave intersection project and Jefferson Ave/Main sidewalk project. \$921,000 - **MODIFICATION**

October 2019 Modifications

Grouped Projects

- Harrison County. Clark Road Bridge project – Move from 2019 to 2020
- Ocean Springs. Wayfinding Study – Move from 2019 to 2020
- Gulfport. Electric Vehicle Charging Station Study – Remove from TIP
- Harrison County. Active Living Initiative – Move from 2019 to 2020
- Diamondhead. Commercial Corridor District Study – Move from 2019 to 2020
- Bay St. Louis. Multiuse Pathway Study – Move from 2019 to 2020
- Gulfport US 49. Pedestrian Safety Study – Move from 2019 to 2020
- Moss Point. Interstate Commerce Area Study – Move from 2019 to 2020
- Pass Christian. North Street Sidewalks – Move from 2019 to 2020
- GRPC/CTA. TSP project – Move from 2019 to 2020

Other Projects

- Gulfport. Landon Road – Move from \$1,751,867 from 2019 and added it to the \$1,208,133 already in 2020.
- Jackson County. Hwy 609 @ Fort Bayou Road – Move from 2020 to 2021

- Gulfport. Increase funding for Courthouse Road by \$210,566

- Biloxi. Breakout \$20,000 from existing allocation for RR Diagnostics

December 2019 Changes

Gulfport - Interconnecting Gulfport, BUILD Grant Award \$20,460,000 (Also add to the 2040 MTP.) **AMENDMENT**

Gautier - Martin Bluff Road (increase federal funding by \$1,442,074) **AMENDMENT**

CTA - Facility Rehab & Renovations (CTA garage renovation - increase FTA 2020 funding by \$792,989 from \$200,000 to \$992,989) **AMENDMENT**

GRPC Safety Projects

Harrison - \$362,000 to \$318,346 , Hancock - \$350,000 to \$331,996, Jackson - \$287,000 to \$393,565 **MODIFICATION**

Diamondhead - Increase Aloha Drive by \$27,280 to \$163,680 **MODIFICATION**

Added Studies approved at the TPC meeting on December 5th to Study Group **MODIFICATION**

Gulfport - Reduced Airport Road by \$402,915 and added the same amount to Courthouse Road **MODIFICATION**

Gulfport - 28th Street. Add \$117,719.19 STBG. From \$4,500,000 to \$4,617,719 STBG

February 2020 Changes

MDOT - Increased funding in the FY 2020 Bridge Group from \$125,000 to \$15,000,000

Gautier - Move RR crossing study from FY2020 to FY2021

March 2020 Changes

Gulfport BUILD project modification. Separate into phases

March 2020 Changes

Added funds to \$1,606 to Ocean Springs Wayfinding Study **MODIFICATION**

June 2020 Changes

Gulfport - Seaway Road Pathway increase from \$945,964 to 1,105,964 **MODIFICATION**

Gulfport - 20th Avenue increase from \$507,169 to \$607,169 **MODIFICATION**

Diberville - Mallet Road Study \$80,000

July 2020 Changes

Add TA funds for Martin Bluff Road in Gautier from Roy's Road to Little Bend Place for \$646,000 (federal) - \$808,000 (total) and a pedestrian connection plaza for Mississippi Gulf Coast Community College Jeff Davis Campus in Gulfport for \$244,356 (federal) and \$305,446 (total) **MODIFICATION**

I-10 Connector Road (Cook Road) between Hwy 609 and Hwy 15 near I-10 Jackson and Harrison Counties. Local funds of \$8,279,616 and federal earmark funds of \$654,289 **AMENDMENT**

July 2020 Changes

Increase Gulfport School Zone Safety by \$42,056 (20%) to \$252,333 **MODIFICATION**

September 2020 Changes TIP UPDATE

CTA 2023 - 2024 POP

JCCAC Bus rehab

Bay St Louis - Hwy 603 I-10 to US 90 \$180,000

Gulfport - US 49 Creosote Road to Turkey Creek \$2,162,720

D'Iberville - Brodie Road at Automall Parkway \$432,000

Long Beach - 28th Street at Klondyke Road \$800,000
Ocean Springs - Ocean Springs Road at Groveland \$1,132,430
D'Iberville - Suzanne Drive at Automall Parkway \$480,000
Pass Christian - Menge Avenue to Espy Avenue \$2,591,038
Bay St Louis - Old Spanish Trail Seube Street to Main Street \$600,000
Gautier - Martin Bluff Gautier-Vancleave Road to Martin Bluff Elementary \$720,000
Jackson County - Lemoyne Boulevard McCann Road to 3300 feet east \$262,151
Long Beach - Pineville Road Seal Avenue to Railroad Street \$600,000
Hancock County - Lakeshore Road Beach Road to Lower Bay Road \$480,000
Harrison County - Bethel Road & Success Road to Hwy 67 \$471,200
Port of Gulfport - US 49 signal timing plans \$200,000

October 2020 Changes MODIFICATION

GRPC/CTA TSP project - \$500,000 Move from 2020 to 2021
Ocean Springs - Steelman Road STUDY - Move from 2020 to 2021 \$48,000
Biloxi - Atkinson Road \$15,000 STUDY Move from 2020 to 2021
Gulfport - Pavement Management STUDY \$80,000 Move from 2020 to 2021
Bay St Louis - ADA Improvements STUDY Move from 2020 to 2021 \$28,000
Jackson County - Hwy 609 STUDY Move from 2020 to 2021 \$112,000
Long Beach - Beatline Road ENV STUDY Move from 2020 to 2021 \$150,000
Ocean Springs - Downtown parking STUDY Move from 2020 to 2021 \$40,000
Long Beach - 5 points intersection STUDY Move from 2020 to 2021 \$96,000
Biloxi - Point Cadet Improvements STUDY Move from 2020 to 2021 \$30,000
Ocean Springs - East Beach Pathway - Move from 2020 to 2021 \$384,000
Gautier - Martin Bluff Road Move from 2020 to 2021 Multiple funding sources Non-urb, TMA, HIP
Bay St Louis - Washington Street Sidewalks - Move from 2020 to 2021 \$120,000
Gulfport - Landon Road \$2,960,000 - Move from 2020 to 2021

October 2020 Changes AMENDMENTS

Waveland - St Joseph Street/Herlihy St and Old Spanish Trail - \$500,000 TAP
Diamondhead - East Aloha Drive PH 2/Veterans to Kalani Drive - \$489,866 TAP
Ocean Springs - Hanshaw Road/Ped Signal @ Cabildo Place - \$82,680
Bay St Louis - Ranch Street/Esplanade Street to Athletic Drive - \$120,000

Bay St Louis - Pine Street/Bay High School - \$140,000

Pascagoula - US 90 Lighting/Pascagoula Street to Industrial Road - \$1,021,913

December 2020 Changes

Jackson County - Highway 609 Gateway and Traffic Study add \$579 STBG to \$112,579 **MODIFICATION**

Gulfport - Landon Road TIP page changes - **MODIFICATION**

February 2021 Changes

Gautier - Combined the Martin Bluff Road Project with the Martin Bluff Road Pathway Project. Added \$720,000 to the original MB Rd project - **MOD**

April 2021 Changes

Ocean Springs - Government Street Improvements Hanley Road to Hanshaw Road breakout PHII \$230,000 - **Mod**

May 2021 Changes

Ocean Springs - Ocean Springs Road change termini from US 90 to Culeoka Dr to US 90 to Rod and Reel St - **Amend**

Gulfport - Interconnecting Gulfport BUILD project - add \$7,780,000 in local funds - **Amend**

Diamondhead - Add to Study Group - Wayfinding Study \$58,500 - **Mod**

June 2021 Changes

Biloxi - Woolmarket Road Sidewalks - Change terminus from Airport Road to Shriner's Blvd - **Amend**

July 2021 Changes

City of Moss Point - Add illustrative project - Interstate 10 Commercial Corridor Improvements - \$4,500,000 **Mod**

Harrison County - Add illustrative project - I-10 Menge Avenue interchange -\$10,000,000 **Mod**

City of Long Beach - Add illustrative funding to project - Beatline Road Corridor Improvements - \$150,000 **Mod**

City of Biloxi - Add illustrative funding to project - Popps Ferry Road Improvements - \$2,100,000 **Mod**

September 2021 Changes

City of Biloxi - Woolmarket Traffic Study Federal\$24,000, Local\$6,000, Total\$30,000 **Mod**

October 2021 Changes

Jackson County - Roy Cumbest Bridge \$4,700,000 **Amend**

MDOT - 2022 O&M group is being revised from \$18,200,000 total, to \$22,000,000 total **Mod**

Ocean Springs - Ocean Springs Road cost increase \$460,000 HIP **Amend**

Ocean Springs - Government Street cost increase \$285,000 HIP **Amend**
Biloxi - Pass Road @ Rodenberg Drive added new project \$504,560 HIP **Amend**
Biloxi - Main Street @ CSX cost increase \$200,000 HIP **Amend**
Jackson County - Old Fort Bayou cost increase \$750,000 HIP **Amend**

December 2021 Changes

Ocean Springs - Ocean Springs Road termini change from Rod and Reel Street to Deana Drive **Amend**
Mississippi Gulf Coast Community College - Campus Pedestrian Connection Plaza - Pedestrian Improvements. MDOT TA \$305,446.00 **Mod**
Bay St Louis - Pine Street move from 2022 to 2023 **Mod**
Bay St Louis - Ranch Street move from 2022 to 2023 **Mod**
Gulfport - Pavement Management study move from 2022 to 2023 **Mod**

March 2022 Changes

Biloxi - Main Street @ CSX add \$20,000 **Mod**

May 2022 changes

Add CTA Tram Bridge Project to TIP / FTA5339(b) - \$7,606,960 (80%), FTA5307 - \$4,000,000 (80%), Local - \$7,100,000 **Amend**
Ocean Springs – Add US 90 @ Wachington Avenue & MLK JR Avenue Study (\$120,000 federal) **Amend**
Diberville – Add Lamey Bridge Road Sidewalks Project (\$402,570 Transportation Alternatives) **Amend**
MDOT – Add Hwy 57 Project (\$136,000,000 federal & \$31,600,000 federal) **Amend**
Long Beach – Railroad Corssing Grade Improvements (\$2,500,000 100% federal) **Amend**

June 2022 changes

Ocean Springs - East Beach Pathway Scope Change from 6.5 sidewalk to 10 ft multiuse pathway **Amend**

August 2022 changes

MDOT - Hwy 57 Combined the 301000 and 302000 details into just one 301000 detail - Mod

August 2022 Changes Update

Biloxi - Popp's Ferry Road Extension - Add funding \$2,100,000
Bay St Louis - Hwy 603 - Add funding \$220,000
Hancock - Texas Flat Road Add project \$184,0567
Diamondhead - Weat Aloha Add project \$800,000
Gulfport - Wasington Avenue Add project \$2,800,000

Gulfport - Airport Road Add project \$400,000
Ocean Springs - Reily Road Add project \$934,054
Gulfport - Oneal Road @ Three Rivers Road Add project \$440,000
Biloxi - Pass Road @ Iberville Drive Add project \$430,560
Biloxi - Pass Road @ McDonnell Add project \$488,720
Jackson County - Hwy 613 @ Hwy 614 roundabout Add project \$600,000
Long Beach - Beatline Road @ 28th Street Add project \$287,750
Long Beach - Klondyke, RR, Jeff Davis roundabouts Add project \$542,800
Biloxi - MGCCC add project \$480,000
Pass Christian - Henderson Avenue @ North Street add project \$487,264
Jackson - Biddix Evans @ Main Street add project \$1,200,000
Diberville - Lamey Bridge Road add project \$558,400
Gautier - Gautier-Vanceave Road add project \$215,160
Bay St Louis - Seube Street add project \$482,126
Bay St Louis - Felicity Street add project \$546,677
Hancock County - Texas Flat Road (Santa Rosa Pathway) add project \$755,565
Pass Christian - North Street Extension REMOVE PROJECT \$2,591,038
Biloxi - Cedar Lake Road Bridge REMOVE PROJECT \$560,000

Swap \$285,000 in HIP and STBG between MPO Safety Projects and Ocean Springs Government Street Phase II - **Mod**

Ocean Springs Road - Change FY 2023 to 2022 **Mod**

October 2022 changes

Long Beach - Pineville Road PH II change funding source and increase funding by 20% - **Mod**

November 2022 Modifications

Long Beach - Klondyke, RR, Jeff Davis Intersections - Description Change

Bay St Louis - ADA study increase from \$28,000 to \$50,000 FY22 to FY23

Bay St Louis - Beyer St Sidewalks FY22 to FY23

Hancock - Lakeshore Rd FY22 to FY23

Biloxi -Woolmarket Sidewalks FY22 to FY23

Long Beach - Klondyke @ Commission FY22 to FY23

CTA - TSP project FY22 to FY23
Pass Christian - North St FY22 to FY23
Ocean Springs - Government Street FY22 to FY23
Diamondhead - Montjoy Creek FY22 to FY23
Diamondhead - Wayfinding Study FY22 to FY23

December 2022 Changes

Add Funding - Beatline Road Pkwy Congressional Directed Spending HIP - \$150,000 - **Amend**
Add Study - Long Beach Transportation Master Plan - \$80,000 STBG **Amend**
Add Study - GRPC Harrison County & Gulfport Airport Connector Master Plan - \$80,000 STBG **Amend**
Deallocate Funding - Moss Point Macphelah Road **Amend**
Deallocate Funding - Gulfport US 49 Pathway **Amend**
Deallocate Funding - Ocean Springs Hanshaw Road Pedestrian Signal **Amend**
Add Project - City of Gautier Dolphin Dr RR Overpass \$15,200,000 **Amend**
Add Funding - City of Moss Point I-10 Interstate Commerce project HIP Earmark - \$4,500,000 **Amend**
Add Funding - City of Biloxi Pops Ferry Extension HIP Earmark - \$2,163,000 **Amend**
Add Project - City of Pascagoula RR Crossing Project \$1,200,000 Non-urb **Amend**
Add Project - City of Diberville Lamey Bridge Rd @ Mallet Rd intersection **Amend**
Add Study - GRPC Moss Point Interstate Commerce Study \$300,000 HB1413 **Amend**
Add Project-- Moss Point Dantzler Street \$260,000 non-urb **Amend**
Add Project - City of Diberville Mallet Rd **Amend**
Add Project - City of Diberville Bike Ped Bridge Project **Amend**
Add Project - City of Gulfport Three Rivers Road - **Amend**
Split Project - City of Gulfport Dedeaux Rd Split Project - **Amend**
Add Study - City of Diberville Rodriguez Street/I-110 Traffic Study - \$80,000 **Amend**
Combine Projects - Bay St Louis Pine, Seube, Ranch and Felicity **Mod**
Swap funding - Diberville Pops Ferry Rd - STBG and HIP **Mod**

Jackson Co Roy Cumbest Bridge Moved from FY 2022 to FY 2023 **Mod**
Hancock Co Texas Flat Santa Rosa Pathway moved from Illustrative to 2026 **Mod**
Jackson Co - Hwy 609 & Old Fort Bayou swap HIP funding - **Mod**
Biloxi - Pass Rd & Rodenburg Ave - Swap funding to CRP - **Mod**
Biloxi - Pass Rd & Iberville Dr - Swap funding to CRP - **Mod**
Safety Projects - Swap HIP to STBG \$285,000 **Mod**

Ocean Springs Reilly Road - Swap out HIP funds **Mod**

Safety Projects TIP page - Break out funding to show each County **Mod**

Hancock Co Texas Flat Reconstruction - Show PE Phase **Mod**

Gulfport - Landon Road increase \$1,500,000 STBG from \$2,952,000 to \$4,452,000 **Amend**

Biloxi - Popps Ferry Ext increase \$1,488,720 STBG from \$4,263,200 to \$5,751,920 STBG **Amend**

Jac Co - Lemoyne Sidewalks increase \$145,694 from \$262,151 to \$407,845 **Amend**

DI - Popps Ferry Rd add \$261,220 STBG from \$2,264,674 to \$2,525,894 **Amend**

Long Beach - Klondyke & Commission Intersection add \$325,000 STBG from \$760,000 to \$1,085,000 **Amend**

Bay St Louis - Hwy 603 Turning Lanes add \$150,000 STBG from \$400,000 to \$550,000 **Amend**

OS - Ocean Springs Road - HIP swap **Mod**

Hancock County - Washington St ADA access add \$350,000 STBG from \$240,000 to \$590,000 **Amend**