

MPO PRIORITY: EQUITY

ENVIRONMENTAL JUSTICE & TITLE VI

The Gulf Coast Metropolitan Planning Organizations must provide a plan for identifying Underserved Communities using the guidance in Title VI and Executive Order 12898.

■ Title VI, which states that “no person in the United States shall, on the ground of race, color, or national origin, be excluded from participation in, be denied the benefits of, or be subjected to discrimination under any program or activi-

ty receiving federal financial assistance,”

■ Executive Order 12898, “Federal Actions to Address Environmental Justice in Minority Populations and Low-Income Populations,” which amplifies the requirements of Title VI and states that federal agencies must identify and address “disproportionately high and adverse human health or environmental effects...of its programs, policies, and activities on minority populations and low-income populations.”

UNDERSERVED COMMUNITIES

Underserved Communities are geographic areas of analysis that MPOs construct to identify populations that (1) are more likely to face negative consequences from infrastructure development and/or (2) are less likely to have equitable access to transportation services. According to suggested guidance from the US Department of Transportation, the process for identifying and addressing environmental justice communities across MPOs includes the following steps:

- Creating a demographic profile of low-income residents and people of color.
- Documenting the level of community engagement.
- Conducting the analysis and subsequent mapping.
- Determining disproportionate/adverse impact on low-income residents and people of color.
- If impacts are present, demonstrating how suggested plans, programs, and projects can mitigate them.



OBJECTIVE

Provide equity and Justice40 in transportation planning.

STRATEGY

Advance support for underserved communities.

MEASURE

Provide 40% of MPO resources to underserved communities.

GRPC Mission

Provide a planning process that identifies, develops, and promotes projects and programs that contribute toward a safe, efficient, and resilient Mississippi Gulf Coast transportation system.



**GULF COAST
EQUITY
ANALYSIS**

Percent of the total number of MPO bicycle and pedestrian projects from the FY2025-2028 TIP located in underserved communities.

67%

Percent of MPO bicycle and pedestrian funding from the FY 2025-2028 TIP located in underserved communities.

66%

Percent of the total number of MPO intersection projects from the FY 2025-2028 TIP located in underserved communities.

79%

Percent of MPO intersection project funding from the FY 2025-2028 TIP located in underserved communities.

52%

Percent of total number of MPO projects from the FY 2025-2028 TIP located in underserved communities.

70%

Percent of total MPO project funding from the FY 2025-2028 TIP located in underserved communities.

56%

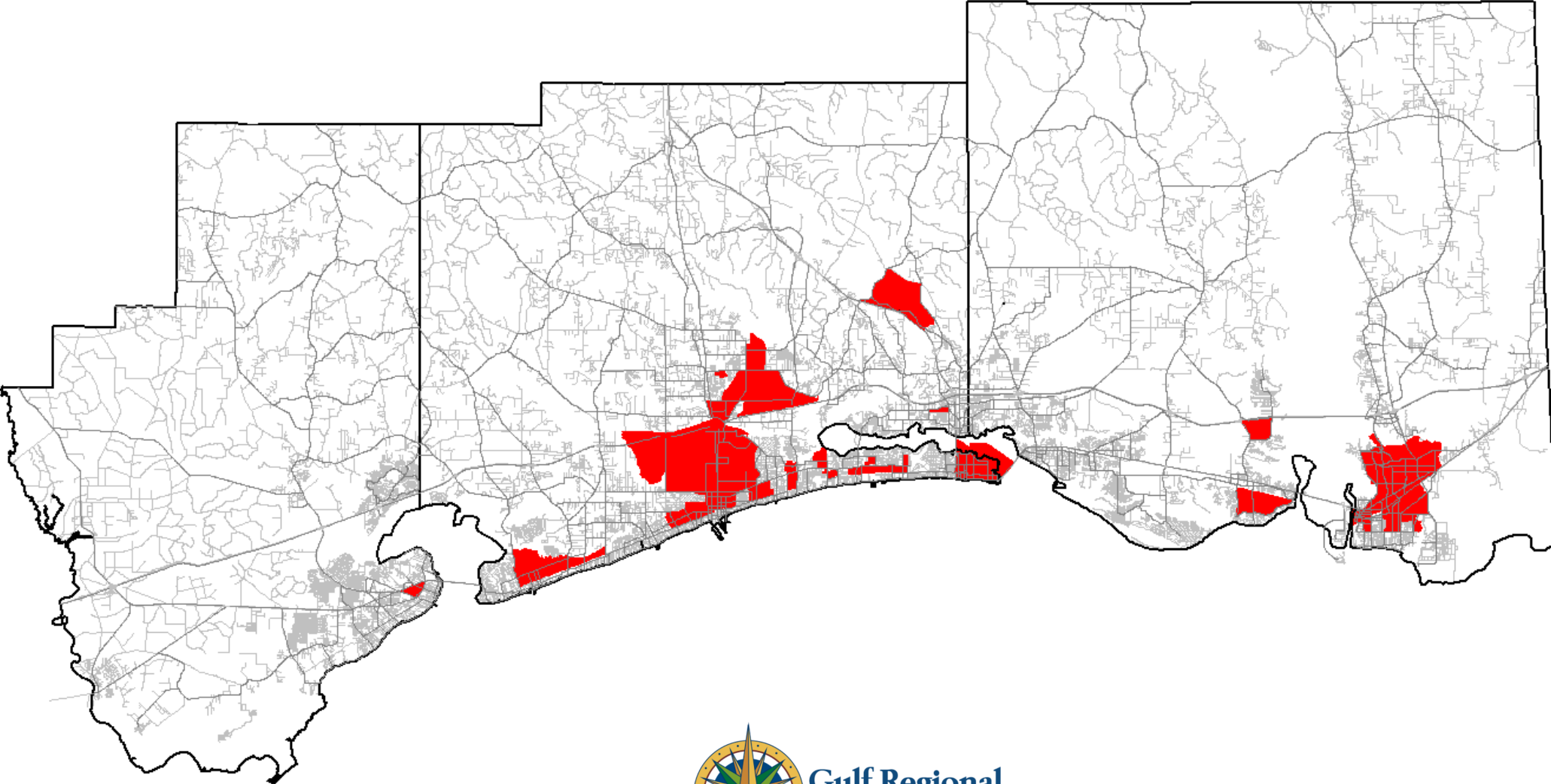
FY 2025-2028 TIP

The TIP is a document that provides a list of projects to be initiated within a four-year period. The TIP only includes projects for which funding has been identified or anticipated.

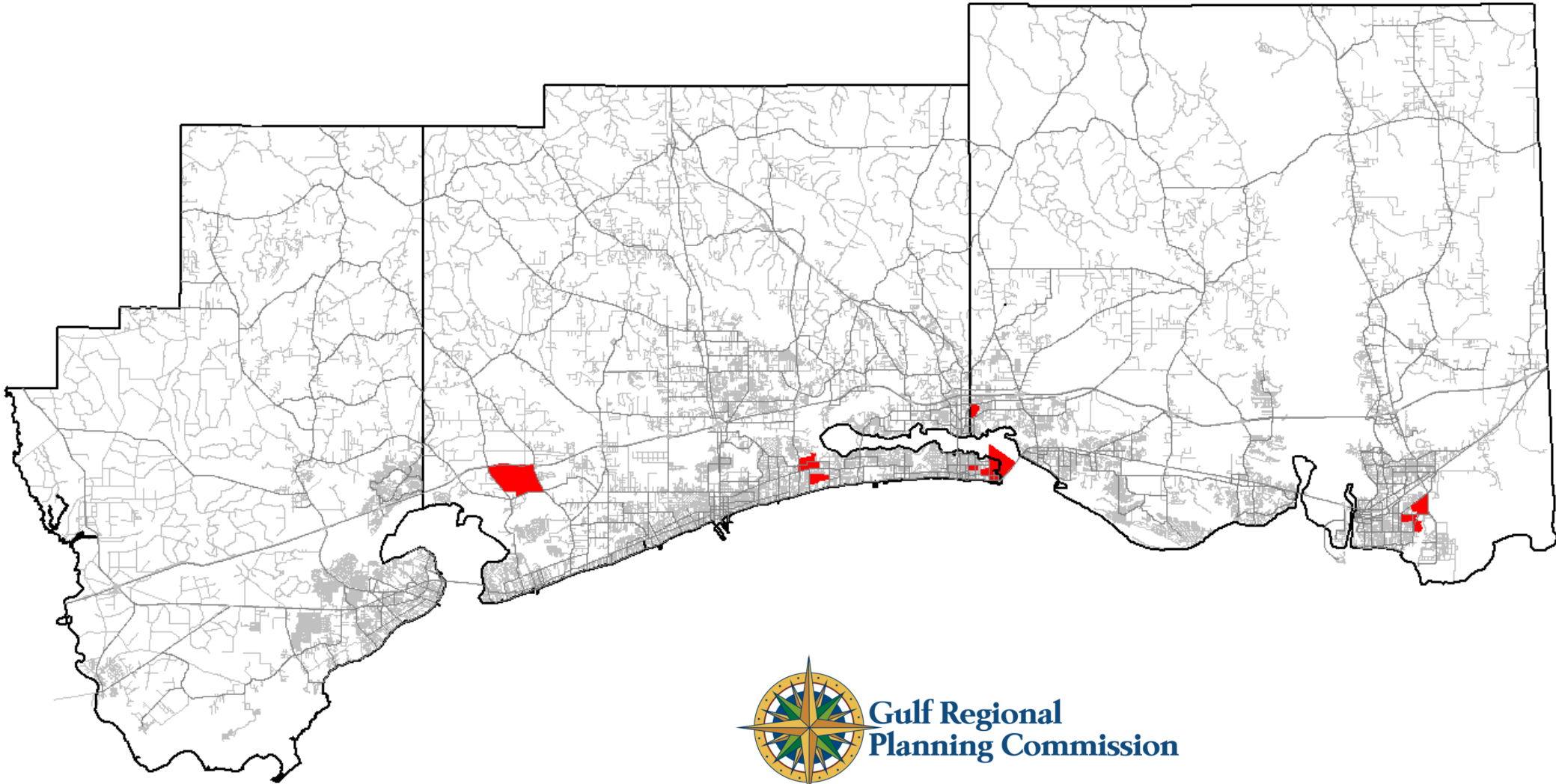
JUSTICE 40

Justice 40 is an initiative to address under-investment in disadvantaged communities. Justice40 is an opportunity to address gaps in transportation infrastructure and public services by working toward the goal that at least 40% of the benefits from grants, programs, and initiatives flow to disadvantaged communities.

GULF COAST—MINORITY



GULF COAST—LIMITED ENGLISH PROFICIENCY



**Gulf Regional
Planning Commission**

GULF COAST—LOW INCOME

