

MISSISSIPPI GULF COAST  
FY 2025-2028  
TRANSPORTATION  
IMPROVEMENT  
PROGRAM (TIP)

---



---

Projects and programs that contribute toward a safe, efficient, and resilient Gulf Coast transportation system

**Updated - December 2024**

# Mississippi Gulf Coast Metropolitan Planning Organization Transportation Improvement Program

**FY 2025- 2028**

## **NON-DISCRIMINATION ASSURANCE**

As provided by Title VI of the Civil Rights Act of 1964 as amended, the Civil Rights Restoration Act of 1987 (P.L. 100.259) and related statutes, executive orders and regulations, the Gulf Regional Planning Commission (GRPC) assures that no person shall on the grounds of race, color, national origin, sex, sexual orientation, religion, age, or disability be excluded from participating in, be denied the benefits of, or otherwise subjected to discrimination under any program or activity from GRPC.

## **NOTATION OF FINANCIAL ASSISTANCE:**

The preparation of this document has been financed in part through grants from the United States Department of Transportation, Federal Highway Administration, the Federal Transit Administration, and the Mississippi Department of Transportation. It was prepared as tasked in the Mississippi Gulf Coast MPO's FY 23-24 Unified Planning Work Program Task A-2.

## **TRANSIT PROGRAM OF PROJECTS:**

Also listed in this document is Coast Transit Authority's Program of Projects that are funded by the Federal Transit Administration. The public meetings/comment period will satisfy the public participation requirements for the FTA Section 5307 and 5309 POP notice.

## THE GULF COAST MPO

The Metropolitan Planning Organization (MPO) is a federally mandated planning body responsible for coordinating transportation programs in US Census designated urbanized areas. The Gulf Regional Planning Commission (GRPC) serves as the MPO for the Mississippi Gulf Coast and is the lead agency responsible for developing and administering plans and activities required to maintain eligibility and receive federal funds for the transportation systems in Hancock, Harrison, and Jackson counties. The primary mission of the MPO is to develop and maintain a transportation planning process compliant with federal and state requirements and supports the development and enhancement of sustainable multimodal facilities, programs and systems in the Mississippi Gulf Coast area. The Transportation Improvement Program (TIP) is one of the most important products of the MPO's planning process.

## THE TIP

The Transportation Improvement Program (TIP) is a financially constrained program developed through an on-going planning process for addressing short-term transportation priorities that are consistent with the MS Gulf Coast's Metropolitan Transportation Plan (MTP), the long-range transportation plan for our region. The TIP is developed and approved by the MPO and is included, without modification, in the Statewide Transportation Improvement Program (STIP) following approval by the Governor. The TIP can be amended by approval of the MPO policy committee. The Gulf Coast MPO allocates Surface Transportation Block Grant (STBG) and Transportation Alternative (TA) funds through TIP policies and processes described in the *MPO Handbook and Prospectus*.

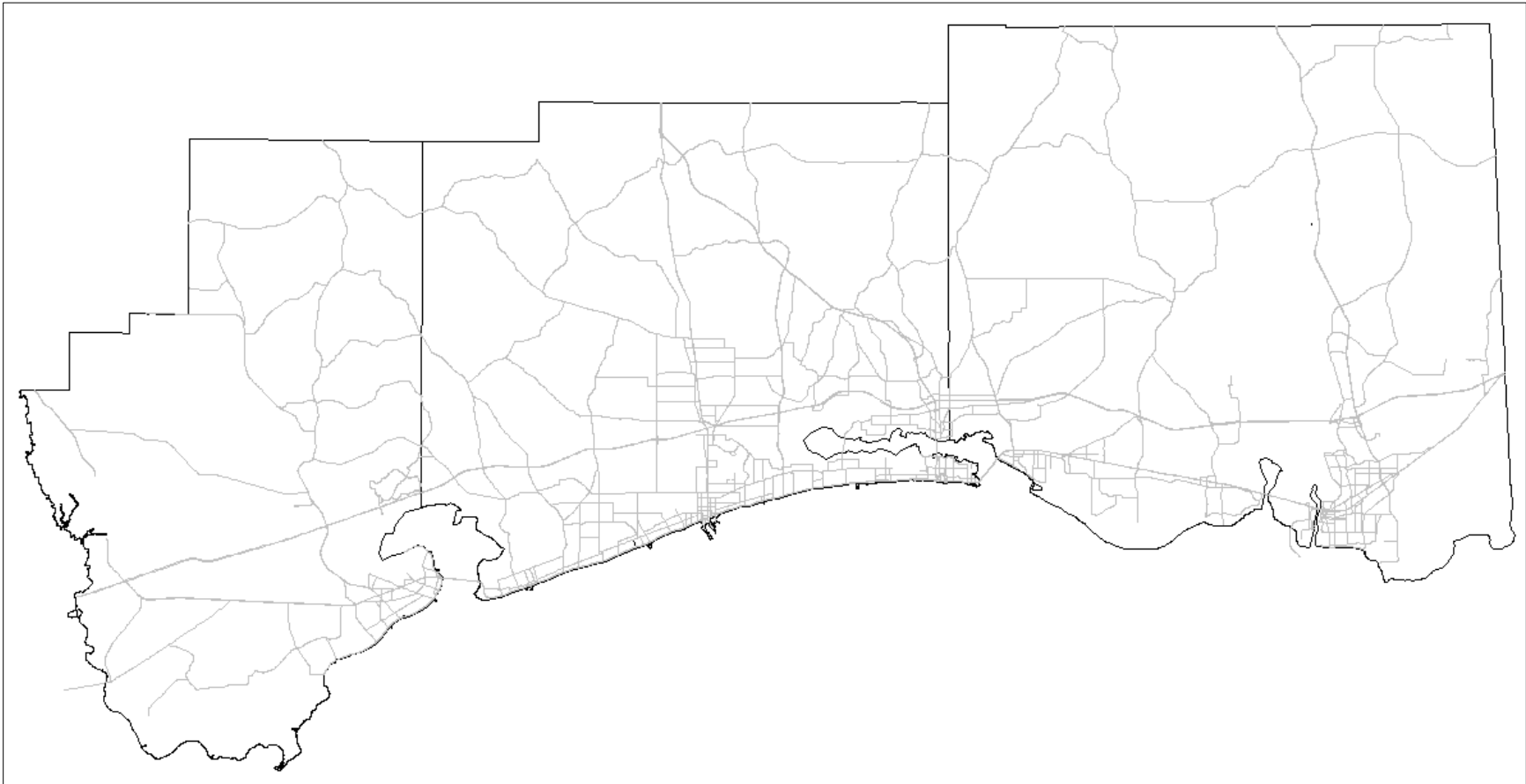
The Gulf Coast TIP identifies timing and funding of all federally funded transportation projects scheduled for implementation in the three coastal counties over a four-year period. The TIP identifies funding amounts, source of funds, project sponsor, type of project, and year of funding for each project. All projects in the TIP must be consistent with goals and projects identified in the area's Metropolitan Transportation Plan. The TIP development process allows for public involvement at various points, including public meetings where proposed projects are presented and discussed. Specific policies for public review are included in the MPO's *Public Participation Plan*.

The TIP development process occurs every two years, however the MPO provides opportunities to revise the projects in the TIP. Two types of changes include "amendment" and "administrative modification," depending on the level of change being made to the project. An amendment is a revision being made to the scope, termini, removal of a project or addition of a project. A modification is considered a minor revision to the TIP or STIP including the MS Gulf Coast MPO 20% maximum cost increase to a project. Specific policies for TIP changes are included in the *MPO Handbook and Prospectus*.

## GULF COAST PLANNING AREA

The Mississippi Gulf Coast Planning Area encompasses three counties in which are located 12 municipalities: Waveland, Bay St. Louis, and Diamondhead in Hancock County; Pass Christian, Long Beach, Gulfport, Biloxi, and D'Iberville in Harrison County; and Ocean Springs, Gautier, Pascagoula, and Moss Point in Jackson County. There are two distinct urbanized areas within the planning area: the Gulfport Urbanized Area (UZA), which stretches from Bay Saint Louis to Ocean Springs and includes portions of all three coastal counties, and the Pascagoula UZA, located in the eastern half of Jackson County.

Figure 1: MS Gulf Coast MPO Planning Area



## NATIONAL GOAL AND EMPHISIS AREAS

The TIP development process reflects the priorities and direction of the region guided by MPO Planning Factors. The MPO considers projects that will address the planning factors presented in Table 1 below.

**Table 1: Planning Factors**

- Economic Vitality - Support the economic vitality of the metropolitan area, especially by enabling global competitiveness, productivity, and efficiency
- Safety - Increase the safety of the transportation system for motorized and non-motorized users
- Security - Increase the security of the transportation system for motorized and non-motorized users
- Mobility & Accessibility - Increase the accessibility and mobility of people and for freight
- Environment - Protect and enhance the environment, promote energy conservation, improve the quality of life, and promote consistency between transportation improvements and State and local planned growth and economic development patterns
- Multimodal Connectivity - Enhance the integration and connectivity of the transportation system, across and between modes, for people and freight
- Operations - Promote efficient system management and operation
- Preservation - Emphasize the preservation of the existing transportation system
- Reliability & Resiliency - Improving transportation system resiliency and reliability
- **Stormwater** - Reducing (or mitigating) the stormwater impacts of surface transportation
- Tourism - Enhancing travel and tourism

## TIP INVESTMENT STRATEGY

The Gulf Coast TIP process places emphasis on the development of specific project types through project categories referred to as “groups.” The TIP groups influence how federal transportation funds are spent by earmarking a portion of these funds to support specific areas. Funding groups encourage the use of STBG funds for investment in priority focus areas, control the amount of funding in an area and, expedite project delivery and being more responsive to needs by not requiring a TIP amendment for each project. The current project groups are “Intersection Projects,” “Bicycle and Pedestrian Projects,” and “Multimodal Projects.”

## TIP PROJECT EVALUATION AND PRIORITIZATION

Given the fiscal realities of today and tomorrow with demands for budget reductions at all levels of national, state, and local government, decisions on where and how to spend the Mississippi Gulf Coast MPO’s allocation of STBG transportation funds should not be taken lightly. To ensure that the most beneficial projects are implemented, a project prioritization process is used. The criteria

used are based on federal goals, emphasis areas, and performance measures for the MPO. Projects are evaluated by MPO staff and prioritized as needed to achieve performance targets and link investment decisions to goals.

## PERFORMANCE MANAGEMENT

In 2012, the transportation MAP-21 was developed with the intent of creating a streamlined, performance-based, multimodal program. MAP-21 increased the accountability and transparency of Federal highway programs by improving transportation investment decision-making through performance-based planning and programming. Performance measurement provides the MPO with a better ability to identify and mitigate issues with their respective transportation networks. The Infrastructure Investment and Jobs Act (IIJA) continues MAP-21's overall performance approach and ensures that State DOT's and MPO's invest in projects that collectively make progress toward the National Goals that were established by Congress.

**Table 2: Performance Goals**

- Safety - To achieve a significant reduction in traffic fatalities and serious injuries on all public roads
- Infrastructure condition - To maintain the highway infrastructure asset system in a state of good repair
- Congestion reduction - To achieve a significant reduction in congestion on the National Highway System
- System reliability - To improve the efficiency of the surface transportation system
- Freight movement and economic vitality - To improve the national freight network, strengthen the ability of rural communities to access national and international trade markets, and support regional economic development
- Environmental sustainability - To enhance the transportation system while protecting and enhancing the natural environment
- Reduced project delivery delays - To reduce project costs, promote jobs and the economy, and expedite the movement of people and goods by accelerating project completion through eliminating delays in the project development and delivery process, including reducing regulatory burdens and improving agencies' work practices

The MPO, MDOT, and CTA cooperatively develop and share information related to transportation performance data, the selection of performance targets, the reporting of performance targets, and the reporting of performance to be used in tracking progress toward the attainment of critical outcomes for the region of the MPO. The MPO will support CTA's State of Good Repair targets by programming capital improvement transit projects in the MTP and TIP. The MPO collaborates with MDOT on Safety, pavement and bridge, system performance, and freight performance by reviewing STIP and TIP projects to assess their impacts and identifying projects from MPO planning to support the measures. This TIP was developed in consideration of the established performance measures and targets. As required under the current most recent transportation act, the Gulf Coast MPO will establish performance targets and track progress towards target achievement for the following performance measures except as noted:

**Table 3: Performance Measures**

Safety (PM1)

- Number of fatalities
- Rate of fatalities per 100 million Vehicle Miles Traveled (VMT)
- Number of serious injuries
- Rate of serious injuries per 100 million Vehicle Miles Traveled (VMT)
- Number of non-motorized fatalities and serious injuries

Pavement Condition (PM2)

- Percent of pavements on the Interstate System in Good condition.
- Percent of pavements on the Interstate System in Poor condition.
- Percent of the non-interstate National Highway System in Good condition.
- Percent of the non-interstate National Highway System in Poor condition.

Bridge Condition (PM2)

- Percent of National Highway System bridges in Good condition.
- Percent of National Highway System bridges in Poor condition.

System Performance (PM3)

- Percent of the Person-Miles Traveled on the Interstate that are reliable.
- Percent of the Person Miles Traveled on the Non-Interstate National Highway System that are reliable.
- Truck Travel Time Reliability (TTTR) index on the Interstate

Traffic Congestion

- Annual hours of peak hour excessive delay per capita. \*
- Percentage of Non-Single Occupancy Vehicle Travel. \*

Total Emissions Reduction

- Total emissions reductions by applicable pollutants under the CMAQ program. \*

Transit State of Good Repair

- Percentage of revenue vehicles exceeding their Useful Life Benchmark (ULB)
- Percentage of non-revenue service vehicles exceeding their ULB
- Percentage of facilities rated under 3.0 on the Transit Economic Requirements Model (TERM)
- Number of fatalities by mode
- Rate of fatalities per 100,000 total vehicle revenue miles by mode
- Number of injuries by mode
- Rate of injuries per 100,000 total vehicle revenue miles by mode
- Number of safety events by mode
- Rate of safety events per 100,000 total vehicle revenue miles by mode
- Mean distance between major mechanical failures by mode

*\*Not required for Gulf Coast MPO*

## FISCAL CONSTRAINT

Federal regulations require that the financial constraints of the Transportation Improvement Program (TIP) be demonstrated and maintained by year and shall include sufficient financial information to determine which projects are to be implemented using current and reasonably available revenues. The MPO will use the figures below to develop their fiscal constraint for the STBG and TAP funds for the planning area.

Congress passes a new *Transportation Bill* approximately every four to six years, the latest of which is entitled the *Infrastructure Investment and Jobs Act (IIJA)*. The Transportation Bill authorizes each state a certain amount for each funding category (STBG, TAP, etc.) for the federal fiscal years it covers. These authorizations are based on the funds expected to be available in the Highway Trust Fund. Congress then passes an *Appropriation Bill* near the beginning of each year that establishes the exact amounts that the states can actually spend in their highway program. The appropriation bill establishes a certain percentage of the total authorization for the states, which is referred to as an *Obligation Limitation*. MDOT suballocates STBG funds to its urbanized areas with over 200,000 in population (Gulfport, UZA) and must make obligation limitation available based on the criteria set forth in 23 U.S.C. 133(e). MDOT makes available 100% of the Gulfport UZA sub-allocation obligation limitation for each fiscal year to actually spend.

## TRANSIT PROGRAM OF PROJECTS

The Program of Projects (POP) reflects the Gulf Coast's federally supported transit projects over the next four fiscal years. The POP is consistent with the Metropolitan Transportation Plan (MTP), which implements regionally significant transit projects. The TIP lists each of FTA programs, the program funding sub-allocations, the government funding participation all which is identified by an ARC identification number. Notice for review of the POP is conducted by the MPO simultaneously with amendments and updates to the TIP. Public notice given is as follows: *"Also listed in this document is Coast Transit Authority's Program of Projects that are funded by the Federal Transit Administration. The public meetings/comment period will satisfy the public participation requirements for the FTA Section 5307 and 5309 POP notice. The proposed CTA Program of Projects will be final unless revised as a result of public comment."*

Satisfying the Requirement for Public Participation in the development of the POP using the Transportation Improvement Program Process. Federal transit law and joint FHWA/FTA planning regulations governing the metropolitan planning process require a locality to include the public and solicit comment when the locality develops its metropolitan long[1]range (twenty-year) transportation plan and its (four-year) metropolitan TIP. Accordingly, FTA has determined that when a recipient follows the procedures of the public involvement process outlined in the FHWA/FTA planning regulations, the recipient satisfies the public participation requirements associated with developing the POP that recipients of Section 5307 funds must meet. See 23 CFR part 450 and 49 CFR part 613 (specifically Subpart B, "Statewide Transportation Planning," and Subpart C, "Metropolitan Transportation Planning and Programming").



A recipient that chooses to integrate the two should coordinate with the MPO and make sure the public knows that the recipient is using the public participation process associated with TIP development to satisfy the public hearing requirements of Section 5307(b). The recipient must ensure the TIP document explicitly states that public notice of public involvement activities and time established for public review and comment on the TIP will satisfy the POP requirements of the Section 5307 Program. Furthermore, if recipients intend to follow such an ongoing practice, FTA encourages them to include such a reference in the metropolitan planning agreement required between public transportation operators, MPOs, and states, as called for in 23 CFR 450.314. Regulations at 23 CFR 450.316 provide a detailed description of the public participation plan.

**PROJECT COST INCREASES**

The Mississippi Gulf Coast MPO receives an annual distribution of STBG to be used by 15 or more Local Public Agencies. On March 1, 2018, the MPO voted to control project cost increases by allowing a maximum of 20% increase. If an LPA needs more funding for a project, MPO staff can approve additional funds up to 20% of the original project funding allocation. If more than 20% is needed for the project, the sponsoring local public agency (LPA) will have to cover the increased cost. An exception can be made for projects that were listed on the TIP prior to the update made in September 2018.

**TIP MODIFICATIONS AND AMENDMENTS**

<b>Total Project Cost of all phases shown within the approved TIP</b>	<b>If the proposed change is greater than or equal to the thresholds below process as an Amendment</b>	<b>If the proposed change is less than the thresholds below process as an Administration Modification</b>
<b>Up to \$2 Million</b>	<b>&gt;/= 75%</b>	<b>&lt; 75%</b>
<b>\$2 Million to \$15 Million</b>	<b>&gt;/= 50%</b>	<b>&lt; 50%</b>
<b>\$15 Million to \$75 Million</b>	<b>&gt; / = 40%</b>	<b>&lt; 40%</b>
<b>\$75 Million or above</b>	<b>&gt;/= 30%</b>	<b>&lt; 30%</b>

Note: Thresholds do not apply to grouped projects. All changes to grouped projects are processed as an Administration Modification.

**SPECIAL MATCH CREDIT**

The Gulf Coast MPO provides the opportunity for the use of Special Match Credit (SMC) Program. SMC is available for LPA projects and is to be requested only by those LPA’s who advance fund those projects at their own cost. If requested in the project initiation process, the LPA may qualify to use actual incurred costs for Preliminary Engineering (PE), Right-of-Way (ROW), and other eligible costs as part, or all, of the required share for the construction project by obtaining Special Match Credit.

**PUBLIC REVIEW**

Three public meetings were held to give the public an opportunity to review the proposed TIP and make comment. GRPC staff and MDOT were in attendance at the St. Martin Community Center and the Bay St Louis Community Center. GRPC and Coast Transit Authority staff were in attendance at the Gulfport Transit Center meeting. Ads were run for the meetings in the *Clarion Ledger* on Sunday June 16, 2024 and Sunday June 30, 2024 and in the *Sun Herald* on Sunday June 23, 2024. The TIP was also made available on GRPC’s website and at their office at 1635-G Poppa Ferry Road in Biloxi.

GRPC placed yard signs at each new project location to provide further certainty that the public would be aware of the proposed transportation projects.



*Public Meeting - St. Martin Community Center*



Public Meeting - Gulfport Transit Center



TIP project yard signs



*TIP project yard signs*



*TIP project yard signs*



Gulf Regional  
Planning Commission

[Home](#) [About GRPC](#) [GRPC Planning](#) [MPO Programs](#) [Maps & Downloads](#) [Public Information](#)

# PROPOSED NEW PROJECT FUNDING

MS GULF COAST FY2025-2028 TIP- FULL DRAFT

Send Comments to [kyarrow@grpc.com](mailto:kyarrow@grpc.com)

228-864-1167

1635-G Popp's Ferry Road, Biloxi MS 39532

*GRPC website*



## **Statewide Transportation Improvement Program Open House Meetings**

The Mississippi Department of Transportation (MDOT) in coordination with the Gulf Regional Planning Commission (GRPC) Metropolitan Planning Organization (MPO) invites you to attend open house public meetings allowing citizens to review and comment on the draft Statewide Transportation Improvement Program (STIP) and local Transportation Improvement Program (TIP). The STIP and TIP are a multi-year listing of transportation projects that have received a commitment of funding from a combination of federal, state, and/or local sources. The 45-day comment period will begin June 17, 2024 and end August 2, 2024.

During the following come-and-go meetings, individuals will be able to review the draft document(s) at their leisure. The STIP is also available for review and comment at [GoMDOT.com](http://GoMDOT.com). The public is invited to submit comments to MDOT by mail, phone, email, electronic submission, or in person at the meeting(s). Your comments, thoughts, and suggestions concerning specific transportation needs will be recorded and evaluated as part of the state planning process. No formal presentations will be made.

**BILOXI\*\***  
**Jackson County**  
Thursday, July 11, 4-6pm  
St Martin Community Center  
15008 Lemoyne Blvd

**BAY ST LOUIS\***  
**Hancock County**  
Thursday, July 18, 4-6pm  
Bay St Louis Community Hall  
301 Blaize Ave

**GULFPORT\***  
**Harrison County**  
Tuesday, July 23, 4-6pm  
Gulfport Transit Center  
1401 20th Ave

\*\* Hosted by MDOT and GRPC

\* Hosted by GRPC

Information regarding the National Electronic Vehicle Infrastructure (NEVI) Formula Program will also be provided at the meeting hosted by MDOT.

The TIP includes the FTA Program of Projects (POP) that are funded by the Federal Transit Administration. The public meetings/comment period will satisfy the public participation requirements for the FTA Section 5307 and 5309 POP notice. The proposed POP will be final unless revised as a result of public comment.

Individuals who require auxiliary aids or special accommodations should advise MDOT no later than five days prior to the meeting date. If you need assistance locating an electronic copy or making a comment, contact MDOT at (601) 359-7685 or email [planning@mdot.ms.gov](mailto:planning@mdot.ms.gov).

Mississippi Gulf Coast Metropolitan Planning Organization  
FY 2025-2028 TIP Public Meeting

Location: St. Martin Community Center  
Date: 7-11-2024

	<u>Name</u>	<u>Representing</u>
1	Sandra Seymour	Jackson County
2	Chuck STARITA	MDOT
3	Billy Owen	MDOT
4	Sammy Holson	MDOT
5	Kelsie Sullivan	MDOT
6	Christina Kemp	Garver
7	Jeff Loftus	GRPC
8	Kenneth Yarrow	GRPL
9		
10		

Mississippi Gulf Coast Metropolitan Planning Organization  
 FY 2025-2028 TIP Public Meeting

Location: Bay St. Louis  
 Date: 7-18-24 4:00-6:00

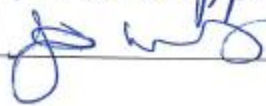
	<u>Name</u>	<u>Representing</u>
1	Ann Steenmetz	Resident
2	Bruce Campbell	"
3	Jeremy Burke	City of BSL
4	Michelle Reso	Bay St Louis
5	Mark Sam	BSL
6	Jimmy Rafferty	Pass Christian
7	Jeff Poff	GRPC
8	Billy Owen	MDOT
9	Jason Zimmer	C-NR C
10	Kodie Keenan	MDOT
11		



Mississippi Gulf Coast Metropolitan Planning Organization  
FY 2025-2028 TIP Public Meeting

Location: Gulfport Transit Center  
Date: 7-23-24

4:00 - 6:00

	<u>Name</u>	<u>Representing</u>
1	Jeff Logan	CRPC
2	Yvette Vogel	Coast Transit Authority
3	Sarah Fisher	Mississippi Aquarium
4	Jeff Cubuk	Mississippi Aquarium
5	Jessica Wernowsky	
6		
7		

On July 17, 2024, I received a call from Mr. Riggins, a retired Air Force Veteran, who lives in the Woolmarket Community. He saw the project comment sign near the Chevron on Shriners Boulevard and was curious to know what the project would entail. He was wondering if it was another roundabout.

After providing him with an overview of the Transportation Improvement Program, I informed him about the multimodal project. Biloxi is proposing increasing the road from 2 lanes to 4 lanes including a center median, turning lanes, drainage, and a multi-use pathway from the existing roundabout at I-10 to Woolmarket Road.

He was appreciative of the proposed improvement.

*Public comment - #1*

Hey Casey,

Thanks for reaching out. The project being proposed is the construction of a sidewalk and crosswalks on Walker Road from Rose Farm Road to Jackson Lee Drive. See below.

Thanks,  
Kenneth Yarrow  
GRPC



---

**From:** Casey McConnell <[jpcmtreasurer@gmail.com](mailto:jpcmtreasurer@gmail.com)>  
**Sent:** Monday, June 24, 2024 2:32 PM  
**To:** Kenneth Yarrow <[kyarrow@grpc.com](mailto:kyarrow@grpc.com)>  
**Subject:** New Project

CAUTION: This email originated from outside of the organization. Do not click links or open attachments unless you recognize the sender and know the content is safe.

Good Afternoon,

I am a board member for Jackson Place community in Ocean Springs. A sign was posted advising us of a new project that will be taking place in our area soon.

Our community is off Rose Farm Rd, Money Farm Rd. And Walker Rd. Next to St. Martin East Elementary School.

Could you please reply with information regarding the upcoming project that is taking place?

Many Thanks,

Casey McConnell  
Board Treasurer  
Jackson Place Community Association

*Public comment - #2*



## Mississippi Gulf Coast TIP: Estimated Funding for FY2025-2028

FY2025 Estimate	Funding Source	Carryover	Federal	Local	Total
	TMA		\$6,412,774	\$1,603,194	\$8,015,968
	Non Urban		\$965,333	\$241,333	\$1,206,666
	Transportation Alternatives		\$829,805	\$207,451	\$1,037,256
	Safety Group		\$500,000	\$125,000	\$625,000
	Studies/Projects Group		\$250,000	\$62,500	\$312,500
	Carbon Reduction Program - TMA		\$859,945	\$214,986	\$1,074,931
	Carbon Reduction Program - Non Urban		\$187,217	\$46,804	\$234,021
FY2026 Estimate	Funding Source	Carryover	Federal	Local	Total
	TMA		\$6,556,029	\$1,639,007	\$8,195,036
	Non Urban		\$965,333	\$241,333	\$1,206,666
	Transportation Alternatives		\$846,401	\$211,600	\$1,058,001
	Safety Group		\$500,000	\$125,000	\$625,000
	Studies/Projects Group		\$250,000	\$62,500	\$312,500
	Carbon Reduction Program - TMA		\$877,144	\$219,286	\$1,096,430
	Carbon Reduction Program - Non Urban		\$190,961	\$47,740	\$238,701
FY2027 Estimate	Funding Source	Carryover	Federal	Local	Total
	TMA		\$6,702,150	\$1,675,538	\$8,377,688
	Non Urban		\$965,333	\$241,333	\$1,206,666
	Transportation Alternatives		\$863,329	\$215,832	\$1,079,161
	Safety Group		\$500,000	\$125,000	\$625,000
	Studies/Projects Group		\$250,000	\$62,500	\$312,500
	Carbon Reduction Program - TMA		\$894,686	\$223,672	\$1,118,358
	Carbon Reduction Program - Non Urban		\$194,780	\$48,695	\$243,475
FY2028 Estimate	Funding Source	Carryover	Federal	Local	Total
	TMA		\$6,851,193	\$1,712,798	\$8,563,991
	Non Urban		\$965,333	\$241,333	\$1,206,666
	Transportation Alternatives		\$880,595	\$220,149	\$1,100,744
	Safety Group		\$500,000	\$125,000	\$625,000
	Studies/Projects Group		\$250,000	\$62,500	\$312,500
	Carbon Reduction Program - TMA		\$912,580	\$228,145	\$1,140,725
	Carbon Reduction Program - Non Urban		\$198,676	\$49,669	\$248,345

NOTE: Funding estimates are based on the reasonable expectation of continued funding for all federally supported programs.

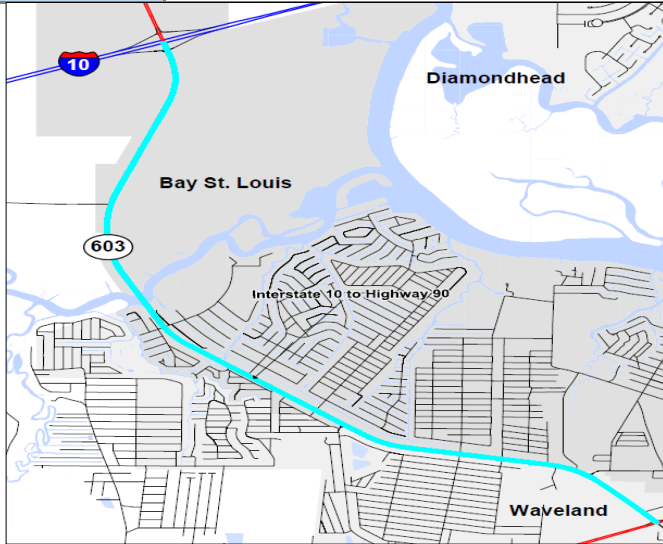
# **Hancock County**

# Mississippi Gulf Coast Metropolitan Planning Organization

## FY2025-2028 Transportation Improvement Program (TIP)



<b>County</b>	Hancock	<b>Agency</b>	Bay St Louis
<b>Improvement Type</b>	Multimodal	<b>Route</b>	Highway 603
<b>Project Termini</b>	Interstate 10 to United States 90		
<b>Project Number</b>	109128		
<b>Project Description</b>	Project will extend the length of turning lanes, improving roadway safety and traffic flow.		



FY	Source	Phase	Federal	Local/Match	Total
2025		PE	\$0	\$68,750	\$68,750
2025	TMA	CON	\$550,000	\$137,500	\$687,500
<b>Total Project Cost</b>			<b>\$550,000</b>	<b>\$206,250</b>	<b>\$756,250</b>

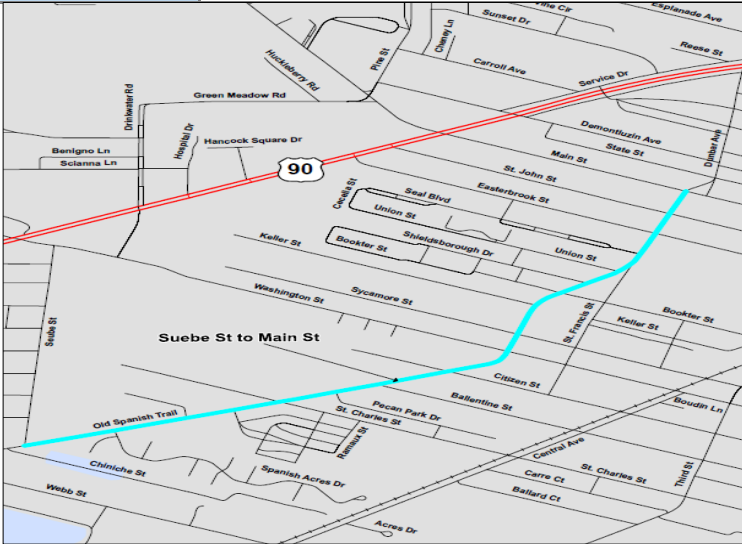
Project Notes					
Action	Add to TIP	Date	8/1/2020	Type	Amend
Remarks	\$180,000				
Action	Cost increase	Date	8/4/2022	Type	Amend
Remarks	Add \$220K to project from 2022 call for projects				
Action	Add funding	Date	9/6/2023	Type	Amend
Remarks	Add \$150,000 STBG. \$400,000 to \$550,000 STBG				
Action		Date		Type	
Remarks					
Action		Date		Type	
Remarks					
Action		Date		Type	
Remarks					
Action		Date		Type	
Remarks					
*These projects are eligible for Special Match Credit if the LPA chooses to utilize					

# Mississippi Gulf Coast Metropolitan Planning Organization

## FY2025-2028 Transportation Improvement Program (TIP)



<b>County</b>	Hancock	<b>Agency</b>	Bay St Louis
<b>Improvement Type</b>	Multimodal	<b>Route</b>	Old Spanish Trail
<b>Project Termini</b>	Seube Street to Main Street		
<b>Project Number</b>			
<b>Project Description</b>	This project is to increase vehicular and pedestrian safety by lighting an existing sidewalk on a major transportation connection in Bay Saint Louis.		



FY	Source	Phase	Federal	Local/Match	Total
2027		PE	\$0	\$72,094	\$72,094
2028	TMA-STBG	CON	\$483,760	\$120,940	\$604,700
	N/A	CON	\$0	\$116,240	\$116,240
<b>Total Project Cost</b>			<b>\$483,760</b>	<b>\$309,274</b>	<b>\$793,034</b>

Project Notes					
Action	Add to TIP	Date	8/1/2020	Type	Amend
Remarks	\$600,000				
Action	Reduce funding	Date	4/19/2024	Type	Amend
Remarks	Reduce funding by \$116,240 and adding to Beyer project				
Action		Date		Type	
Remarks					
Action		Date		Type	
Remarks					
Action		Date		Type	
Remarks					
Action		Date		Type	
Remarks					
Action		Date		Type	
Remarks					
*These projects are eligible for Special Match Credit if the LPA chooses to utilize					

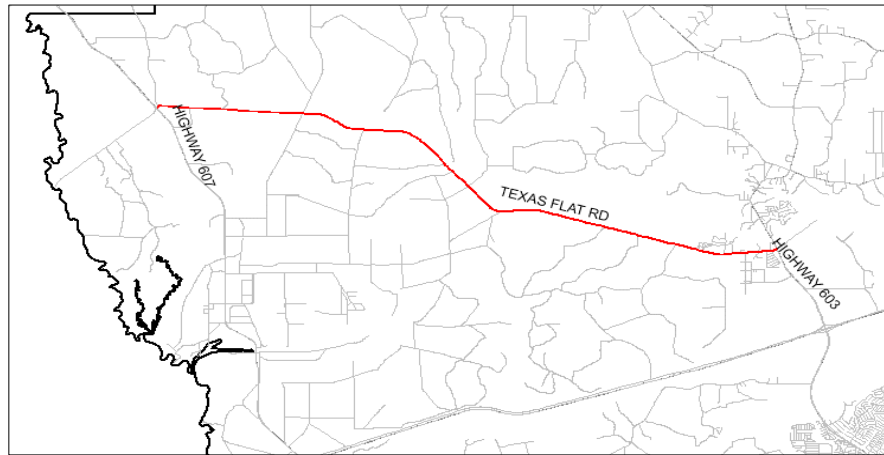


# Mississippi Gulf Coast Metropolitan Planning Organization

## FY2025-2028 Transportation Improvement Program (TIP)



<b>County</b>	Hancock County	<b>Agency</b>	Hancock County
<b>Improvement Type</b>	Multimodal	<b>Route</b>	Texas Flat Road
<b>Project Termini</b>	MS 603 to MS 607		
<b>Project Number</b>	109415		
<b>Project Description</b>	Repair and level shoulders, installation of micro surface treatment.		



FY	Source	Phase	Federal	Local/Match	Total
2023		PE	\$0	\$90,271	\$90,271
2026	TMA-STBG	CON	\$1,840,567	\$369,870	\$2,300,708
<b>Total Project Cost</b>			<b>\$1,840,567</b>	<b>\$460,141</b>	<b>\$2,390,979</b>

### Project Notes

Action	Add to TIP	Date	8/4/2022	Type	Amend
Remarks	\$1,840,567				
Action	Add PE Phase	Date	8/11/2023	Type	Mod
Remarks	Add PE phase and adjust local match for CON				
Action		Date		Type	
Remarks					
Action		Date		Type	
Remarks					
Action		Date		Type	
Remarks					
Action		Date		Type	
Remarks					

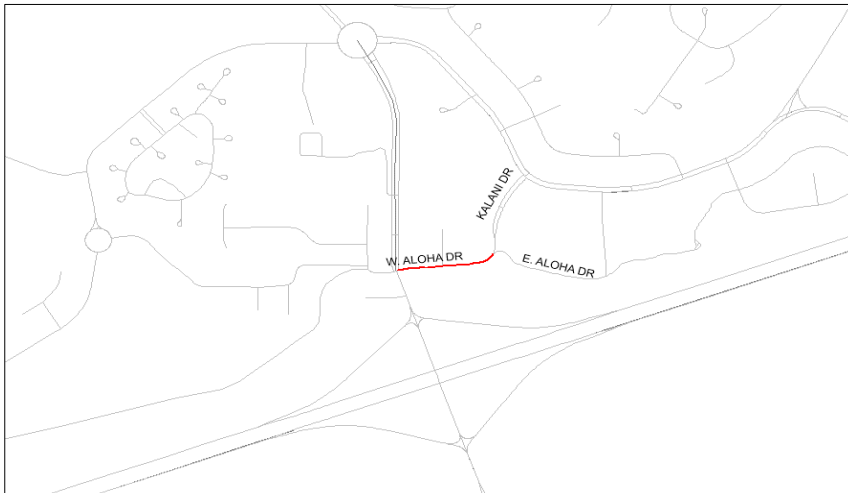
\*These projects are eligible for Special Match Credit if the LPA chooses to utilize

# Mississippi Gulf Coast Metropolitan Planning Organization

## FY2025-2028 Transportation Improvement Program (TIP)



<b>County</b>	Hancock County	<b>Agency</b>	Diamondhead
<b>Improvement Type</b>	Multimodal	<b>Route</b>	West Aloha Drive
<b>Project Termini</b>	Gex Drive to Kalani Drive		
<b>Project Number</b>			
<b>Project Description</b>	Medians, curbing, pavement, sidewalks, pathways.		



FY	Source	Phase	Federal	Local/Match	Total
2025		PE	\$0	\$100,000	\$100,000
2026	TMA-STBG	CON	\$800,000	\$200,000	\$1,000,000
<b>Total Project Cost</b>			<b>\$800,000</b>	<b>\$300,000</b>	<b>\$1,100,000</b>

### Project Notes

Action	Add to TIP	Date	8/4/2022	Type	Amend
Remarks	\$800,000				
Action		Date		Type	
Remarks					
Action		Date		Type	
Remarks					
Action		Date		Type	
Remarks					
Action		Date		Type	
Remarks					
Action		Date		Type	
Remarks					

\*These projects are eligible for Special Match Credit if the LPA chooses to utilize

# Mississippi Gulf Coast Metropolitan Planning Organization

## FY2025-2028 Transportation Improvement Program (TIP)



<b>County</b>	Hancock County	<b>Agency</b>	Hancock County
<b>Improvement Type</b>	Multimodal	<b>Route</b>	Kiln-Delisle Road
<b>Project Termini</b>	Hancock County Arena		
<b>Project Number</b>			
<b>Project Description</b>	Construct new turn lanes for both eastbound and westbound traffic to provide safer access into the Hancock County Arena. Also, construct a right turn lane into East Hancock Elementary School. This project will also include drainage improvements to accommodate the new roadway width.		



Project Notes					
Action	Add to TIP	Date	8/8/2024	Type	Amend
Remarks	\$1,160,000				
Action		Date		Type	
Remarks					
Action		Date		Type	
Remarks					
Action		Date		Type	
Remarks					
Action		Date		Type	
Remarks					
Action		Date		Type	
Remarks					
Action		Date		Type	
Remarks					
*These projects are eligible for Special Match Credit if the LPA chooses to utilize					

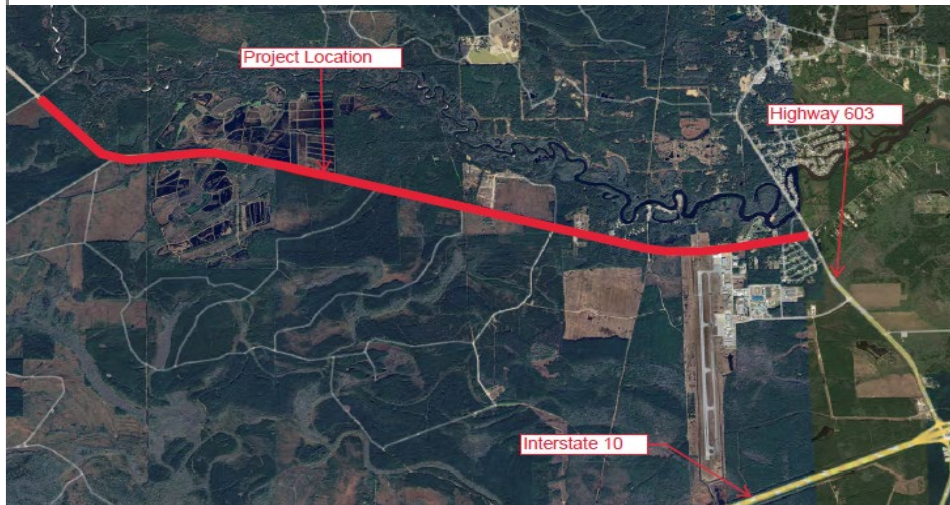
FY	Source	Phase	Federal	Local/Match	Total
2027		PE	\$0	\$145,000	\$145,000
2027		ROW	\$0	\$100,000	\$100,000
2028	TMA-STBG	CON	\$1,160,000	\$290,000	\$1,450,000
<b>Total Project Cost</b>			<b>\$1,160,000</b>	<b>\$535,000</b>	<b>\$1,695,000</b>

# Mississippi Gulf Coast Metropolitan Planning Organization

## FY2025-2028 Transportation Improvement Program (TIP)



<b>County</b>	Hancock County	<b>Agency</b>	Hancock County
<b>Improvement Type</b>	Multimodal	<b>Route</b>	Texas Flat Road PH2
<b>Project Termini</b>	MS 603 to MS 607		
<b>Project Number</b>			
<b>Project Description</b>	Install rumble strips and a 2' safety shoulder in each direction to increase travel safety along this route. Provide shoulder stabilization to reduce the amount of embankment erosion. Increase the PASER rating by completing base repairs. Striping of roadway to increase lane delineation.		



FY	Source	Phase	Federal	Local/Match	Total
2027		PE	\$0	\$187,800	\$187,800
2028	TMA-STBG	CON	\$1,502,400	\$375,600	\$1,878,000
<b>Total Project Cost</b>			<b>\$1,502,400</b>	<b>\$563,400</b>	<b>\$2,065,800</b>

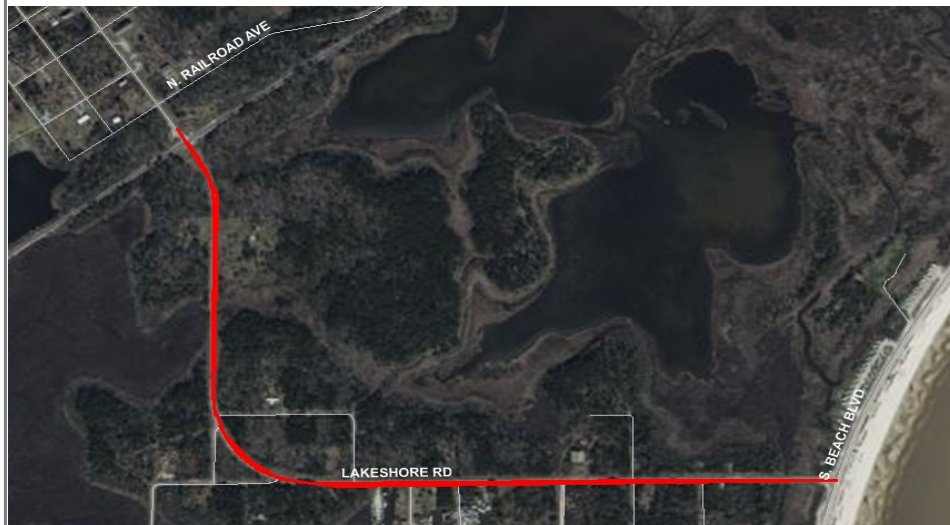
Project Notes					
Action	Add to TIP	Date	8/8/2024	Type	Amend
Remarks	\$1,502,400				
Action		Date		Type	
Remarks					
Action		Date		Type	
Remarks					
Action		Date		Type	
Remarks					
Action		Date		Type	
Remarks					
Action		Date		Type	
Remarks					
Action		Date		Type	
Remarks					
*These projects are eligible for Special Match Credit if the LPA chooses to utilize					

# Mississippi Gulf Coast Metropolitan Planning Organization

## FY2025-2028 Transportation Improvement Program (TIP)



<b>County</b>	Hancock County	<b>Agency</b>	Hancock County
<b>Improvement Type</b>	Multimodal	<b>Route</b>	Lakeshore Road PH 2
<b>Project Termini</b>	CSX railroad to South Beach Boulevard		
<b>Project Number</b>			
<b>Project Description</b>	PH2 Reconstruction		



FY	Source	Phase	Federal	Local/Match	Total
2027		PE	\$0	\$50,000	\$50,000
2028	TMA-STBG	CON	\$715,200	\$178,800	\$894,000
<b>Total Project Cost</b>			<b>\$715,200</b>	<b>\$228,800</b>	<b>\$944,000</b>

### Project Notes

Action	Add to TIP	Date	8/8/2024	Type	Amend
Remarks	\$715,200				
Action		Date		Type	
Remarks					
Action		Date		Type	
Remarks					
Action		Date		Type	
Remarks					
Action		Date		Type	
Remarks					
Action		Date		Type	
Remarks					
Action		Date		Type	
Remarks					

<b>Special Match Credit ?</b>	
-------------------------------	--

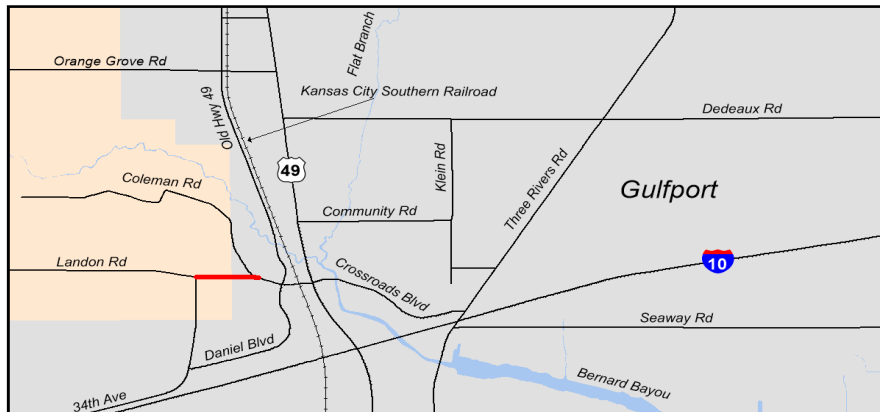
# **Harrison County**

# Mississippi Gulf Coast Metropolitan Planning Organization

## FY2025-2028 Transportation Improvement Program (TIP)



<b>County</b>	Harrison	<b>Agency</b>	Harrison County
<b>Improvement Type</b>	Multimodal	<b>Route</b>	Landon Road
<b>Project Termini</b>	Coleman Road to 34th Avenue (.25 mile)		
<b>Project Number</b>	107904		
<b>Project Description</b>	Widen Landon Road outside of the Gulfport City limits to connect with Gulfport's widening project inside the City limits and add bike/ped facilities. Gulfport's Landon Road widening project can be found in the FY 2023-2026 TIP.		



FY	Source	Phase	Federal	Local/Match	Total
2025		PE	\$0	\$170,000	\$170,000
2025		ROW	\$0	\$100,000	\$100,000
2026	TMA-STBG	CON	\$1,360,000	\$340,000	\$1,700,000
<b>Total Project Cost</b>			<b>\$1,360,000</b>	<b>\$610,000</b>	<b>\$1,970,000</b>

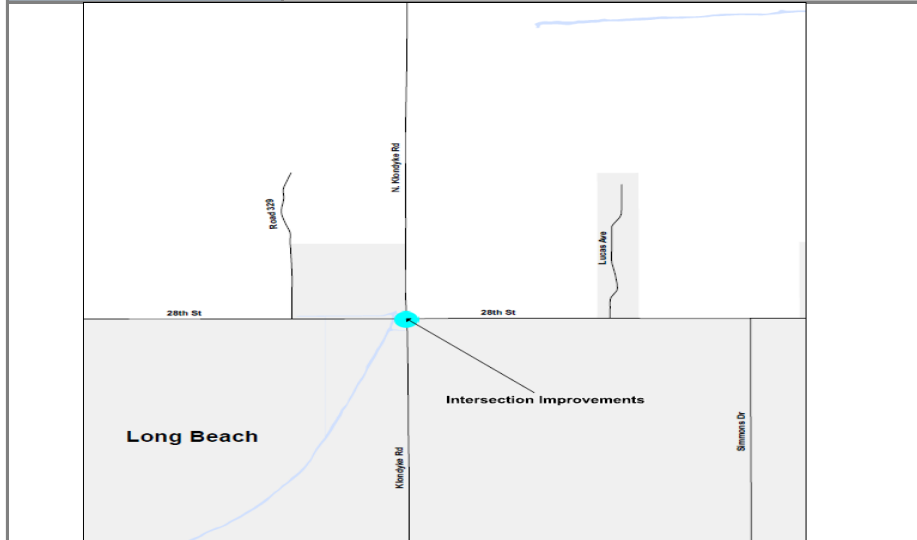
Project Notes					
Action	Add to TIP	Date	8/23/2018	Type	Amend
Remarks	\$1,360,000 STBG				
Action		Date		Type	
Remarks					
Action		Date		Type	
Remarks					
Action		Date		Type	
Remarks					
Action		Date		Type	
Remarks					
Action		Date		Type	
Remarks					
*These projects are eligible for Special Match Credit if the LPA chooses to utilize					

# Mississippi Gulf Coast Metropolitan Planning Organization

## FY2025-2028 Transportation Improvement Program (TIP)



<b>County</b>	Harrison	<b>Agency</b>	Long Beach
<b>Improvement Type</b>	Intersection	<b>Route</b>	28th Street
<b>Project Termini</b>	28th Street - at Klondyke Road		
<b>Project Number</b>	108637		
<b>Project Description</b>	Project is to improve the intersection of 28th Street and Klondyke Road. A determination of improvements to signalization, additional turn lanes and the consideration of a roundabout.		



FY	Source	Phase	Federal	Local/Match	Total
2025		PE	\$0	\$100,000	\$100,000
2025		ROW	\$0	\$100,000	\$100,000
2025	TMA-STBG	CON	\$800,000	\$200,000	\$1,000,000
<b>Total Project Cost</b>			<b>\$800,000</b>	<b>\$400,000</b>	<b>\$1,200,000</b>

### Project Notes

Action	Add to TIP	Date	8/1/2020	Type	Amend
Remarks	\$800,000				
Action		Date		Type	
Remarks					
Action		Date		Type	
Remarks					
Action		Date		Type	
Remarks					
Action		Date		Type	
Remarks					
Action		Date		Type	
Remarks					

\*These projects are eligible for Special Match Credit if the LPA chooses to utilize

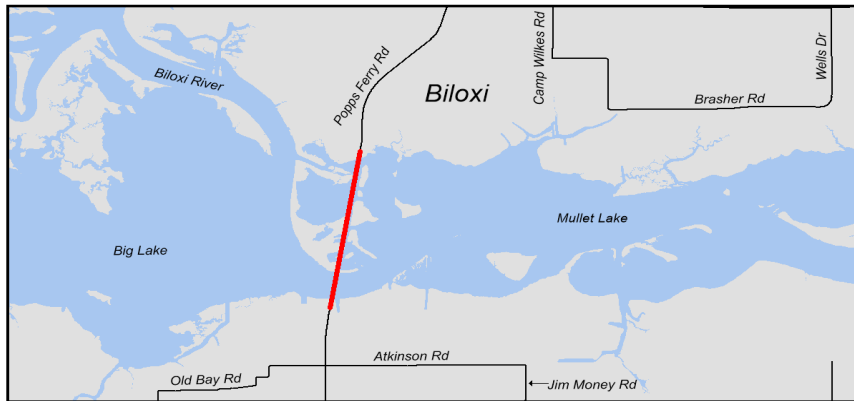


# Mississippi Gulf Coast Metropolitan Planning Organization

## FY2025-2028 Transportation Improvement Program (TIP)



<b>County</b>	Harrison	<b>Agency</b>	Biloxi	
<b>Improvement Type</b>	Multimodal	<b>Route</b>	Poppa Ferry Road	
<b>Project Termini</b>	.3 miles of bridge			
<b>Project Number</b>				
<b>Project Description</b>	Replace the existing Poppa Ferry bridge			



FY	Source	Phase	Federal	Local/Match	Total
2020	Earmark	PE	\$0	\$100,000	\$100,000
2020	Earmark	ENV	\$4,000,000	\$1,000,000	\$5,000,000
2028	Earmark	CON	\$8,000,000	\$2,000,000	\$10,000,000
<b>Total Project Cost</b>			<b>\$12,000,000</b>	<b>\$3,100,000</b>	<b>\$15,100,000</b>

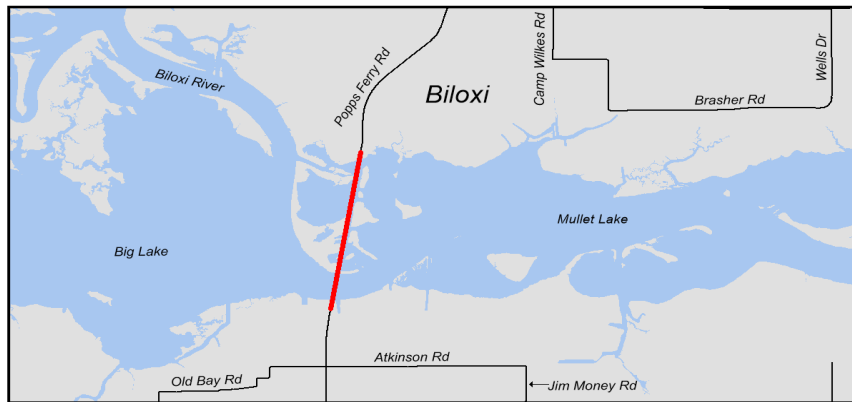
Project Notes					
Action	Add to TIP	Date	5/21/2009	Type	Amend
Remarks	\$4,000,000 Earmark Funds (Environmental Phase)				
Action	Change year	Date	10/1/2012	Type	Mod
Remarks	Move ENV from FY12 to FY13				
Action	Add Funds	Date	9/13/2013	Type	Amend
Remarks	Add \$8,000,000 Earmark Funds (Construction Phase)				
Action		Date		Type	
Remarks					
Action		Date		Type	
Remarks					
Action		Date		Type	
Remarks					
Action		Date		Type	
Remarks					

# Mississippi Gulf Coast Metropolitan Planning Organization

## FY2025-2028 Transportation Improvement Program (TIP)



<b>County</b>	Harrison	<b>Agency</b>	Biloxi
<b>Improvement Type</b>	Multimodal	<b>Route</b>	Popps Ferry Road
<b>Project Termini</b>	.3 miles of bridge		
<b>Project Number</b>			
<b>Project Description</b>	Popps Ferry Road bridge maintenance		



FY	Source	Phase	Federal	Local/Match	Total
2025	MDOT STBG	PE	\$400,000	\$100,000	\$500,000
		ENV	\$0	\$0	\$0
		ROW	\$0	\$0	\$0
2025	MDOT STBG	CON	\$11,600,000	\$2,900,000	\$14,500,000
<b>Total Project Cost</b>			<b>\$12,000,000</b>	<b>\$3,000,000</b>	<b>\$15,000,000</b>

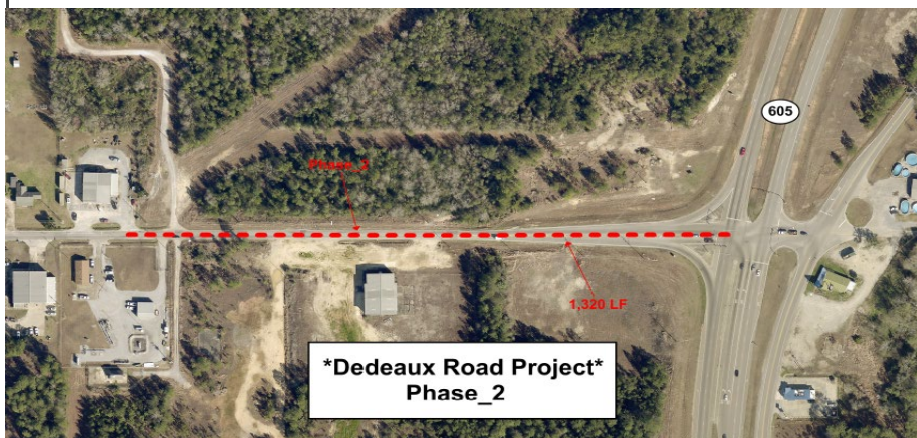
Project Notes					
Action	Add to TIP	Date	12/31/2024	Type	Amend
Remarks	Add Popps Bridge maint project \$12,000,000 MDOT STBG				
Action		Date		Type	
Remarks					
Action		Date		Type	
Remarks					
Action		Date		Type	
Remarks					
Action		Date		Type	
Remarks					
Action		Date		Type	
Remarks					

# Mississippi Gulf Coast Metropolitan Planning Organization

## FY2025-2028 Transportation Improvement Program (TIP)



<b>County</b>	Harrison	<b>Agency</b>	Gulfport
<b>Improvement Type</b>	Multimodal	<b>Route</b>	Dedeaux Road Phase 2
<b>Project Termini</b>	Hwy 605 to 1/4 mile West of Hwy 605		
<b>Project Number</b>	109524		
<b>Project Description</b>	Widening and adding bike/ped facilities		



FY	Source	Phase	Federal	Local/Match	Total
2024		PE	\$0	\$100,000	\$100,000
2025		ENV	\$0	\$15,000	\$15,000
2025		ROW	\$0	\$50,000	\$50,000
2025	TMA - STBG	CON	\$3,760,000	\$775,000	\$4,535,000
<b>Total Project Cost</b>			<b>\$3,760,000</b>	<b>\$940,000</b>	<b>\$4,700,000</b>

Project Notes					
Action	Add to TIP	Date	8/23/2018	Type	Amend
Remarks	\$3,760,000 added to Illustrative List				
Action	Split project	Date	12/8/2022	Type	Amend
Remarks	Phase 2 and Phase 2a split at 1/4 mile east of Hwy 605				
Action		Date		Type	
Remarks					
Action		Date		Type	
Remarks					
Action		Date		Type	
Remarks					
Action		Date		Type	
Remarks					
Action		Date		Type	
Remarks					
Action		Date		Type	
Remarks					

\*These projects are eligible for Special Match Credit if the LPA chooses to utilize

# Mississippi Gulf Coast Metropolitan Planning Organization

## FY2025-2028 Transportation Improvement Program (TIP)



<b>County</b>	Harrison	<b>Agency</b>	Gulfport
<b>Improvement Type</b>	Multimodal	<b>Route</b>	Dedeaux Road Phase 2a
<b>Project Termini</b>	Jessica Drive to 1/4 mile West of Hwy 605		
<b>Project Number</b>			
<b>Project Description</b>	Widening and adding bike/ped facilities		



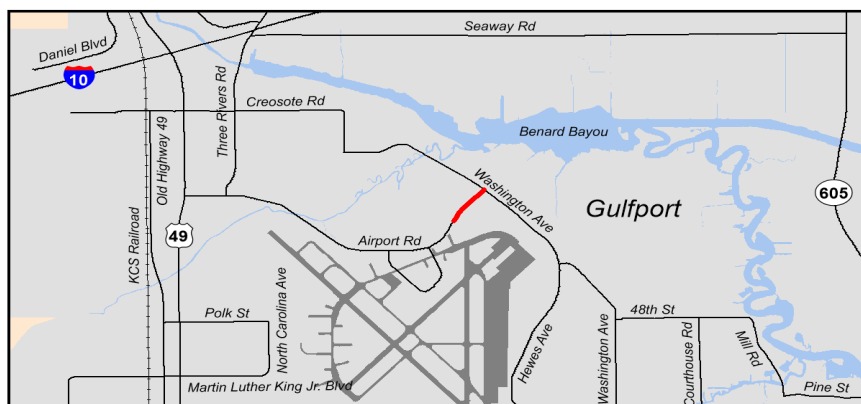
FY	Source	Phase	Federal	Local/Match	Total
Illustrative		PE	\$0	\$800,000	\$800,000
Illustrative		ENV	\$0	\$15,000	\$15,000
Illustrative		ROW	\$0	\$750,000	\$750,000
Illustrative	N/A	CON	\$0	\$800,000	\$8,000,000
<b>Total Project Cost</b>			<b>\$0</b>	<b>\$2,365,000</b>	<b>\$9,565,000</b>

Project Notes					
Action	Add to TIP	Date	8/23/2018	Type	Amend
Remarks	\$3,760,000 added to Illustrative List				
Action	Split project	Date	12/8/2022	Type	Amend
Remarks	Phase 2 and Phase 2a split at 1/4 mile east of Hwy 605				
Action		Date		Type	
Remarks					
Action		Date		Type	
Remarks					
Action		Date		Type	
Remarks					
Action		Date		Type	
Remarks					
Action		Date		Type	
Remarks					
*These projects are eligible for Special Match Credit if the LPA chooses to utilize					

# Mississippi Gulf Coast Metropolitan Planning Organization FY2025-2028 Transportation Improvement Program (TIP)



<b>County</b>	Harrison	<b>Agency</b>	Gulfport
<b>Improvement Type</b>	Intersection	<b>Route</b>	Airport Road
<b>Project Termini</b>	Washington Ave to the existing 4 lane segment (.25 mile)		
<b>Project Number</b>	107222		
<b>Project Description</b>	Build a roundabout at Washington Avenue. ROW will be donated by the Gulfport-Biloxi Airport. This project will link to Gulfport's Washington Avenue Widening Project(no project number), which can be found in this TIP document.		



Project Notes					
Action	Add to TIP	Date	6/25/2015	Type	Amend
Remarks	\$550,000 STP				
Action	Change Year	Date	2/23/2017	Type	Mod
Remarks	Move CON year from FY17 & FY19				
Action	Change Year	Date	8/23/2018	Type	Mod
Remarks	Move project to the Illustrative List				
Action	Reduce funding to \$147,085	Date	12/16/2019	Type	Mod
Remarks	Reduced to add to Courthouse Road				
Action	Add funding	Date	8/4/2022	Type	Amend
Remarks	\$3,852,915 added to project				
Action		Date		Type	
Remarks					
Action		Date		Type	
Remarks					
Action		Date		Type	
Remarks					
*These projects are eligible for Special Match Credit if the LPA chooses to utilize					

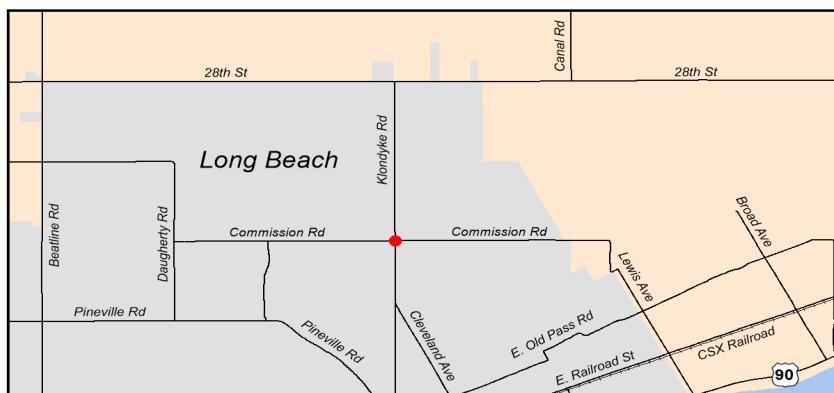
FY	Source	Phase	Federal	Local/Match	Total
2017		PE	\$0	\$500,000	\$500,000
2025		ROW	\$0	\$0	\$0
2027	TMA-STBG	CON	\$4,000,000	\$1,000,000	\$5,000,000
<b>Total Project Cost</b>			<b>\$4,000,000</b>	<b>\$1,500,000</b>	<b>\$5,500,000</b>

# Mississippi Gulf Coast Metropolitan Planning Organization

## FY2025-2028 Transportation Improvement Program (TIP)



<b>County</b>	Harrison	<b>Agency</b>	Long Beach
<b>Improvement Type</b>	Intersection	<b>Route</b>	Klondyke Road
<b>Project Termini</b>	Commision Road		
<b>Project Number</b>	107917		
<b>Project Description</b>	Intersection improvements including sidewalk connectivity and crosswalks		



Project Notes					
Action	Add to TIP	Date	8/23/2018	Type	Amend
Remarks	\$760,000 STBG				
Action		Date	2/1/2022	Type	MOD
Remarks	Modification for PE and ROW for special match credit				
Action	Change FY	Date	11/14/2022	Type	MOD
Remarks	Move from FY 2022 to 2023				
Action	Increase funding	Date	3/27/2024	Type	Amend
Remarks	Add \$325,000 STBG. \$760,000 to \$1,085,000				
Action	Move FY	Date	3/27/2024	Type	Mod
Remarks	Move from FY 23 to FY 25				
Action		Date		Type	
Remarks					
Action		Date		Type	
Remarks					
Action		Date		Type	
Remarks					
*These projects are eligible for Special Match Credit if the LPA chooses to utilize					

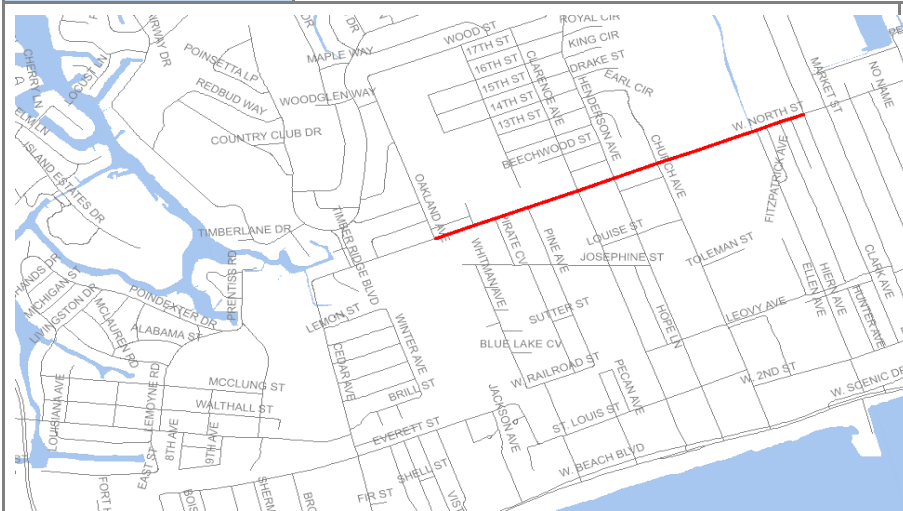
FY	Source	Phase	Federal	Local/Match	Total
		PE	\$0	\$166,621	\$166,621
2025	TMA-STBG	CON	\$1,085,000	\$271,250	\$1,356,250
2025		ROW	\$0	\$75,000	\$75,000
2025		Other	\$0	\$25,000	\$25,000
<b>Total Project Cost</b>			<b>\$1,085,000</b>	<b>\$537,871</b>	<b>\$1,622,871</b>

# Mississippi Gulf Coast Metropolitan Planning Organization

## FY2025-2028 Transportation Improvement Program (TIP)



<b>County</b>	Harrison	<b>Agency</b>	Pass Christian
<b>Improvement Type</b>	Bike/Ped	<b>Route</b>	North Street
<b>Project Termini</b>	High School to Pass Estates		
<b>Project Number</b>	107343		
<b>Project Description</b>	Sidewalks providing safe access for students to school		



### Project Notes

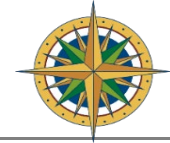
<b>Action</b>	Add to TIP	<b>Date</b>	6/25/2015	<b>Type</b>	Amend
<b>Remarks</b>					
<b>Action</b>	Move FY	<b>Date</b>	3/30/2022	<b>Type</b>	Mod
<b>Remarks</b>	Move from 2021 to 2022				
<b>Action</b>	Change FY	<b>Date</b>	11/10/2022	<b>Type</b>	Mod
<b>Remarks</b>	Move from FY 2022 to FY 2023				
<b>Action</b>	20 % cost increase	<b>Date</b>	11/20/2023	<b>Type</b>	Mod
<b>Remarks</b>	Cost increase: Add \$90,560 from \$452,800 to \$543,360				
<b>Action</b>	Change FY	<b>Date</b>	11/20/2023	<b>Type</b>	Mod
<b>Remarks</b>	Move from FY 2023 to FY 2024				
<b>Action</b>		<b>Date</b>		<b>Type</b>	
<b>Remarks</b>					
<b>Action</b>		<b>Date</b>		<b>Type</b>	
<b>Remarks</b>					
<b>Action</b>		<b>Date</b>		<b>Type</b>	
<b>Remarks</b>					

FY	Source	Phase	Federal	Local/Match	Total
2024		PE	\$0	\$51,700	\$51,700
2025		ROW	\$0	\$100,000	\$100,000
2025	TMA-STBG	CON	\$543,360	\$135,840	\$679,200
<b>Total Project Cost</b>			<b>\$543,360</b>	<b>\$287,540</b>	<b>\$830,900</b>

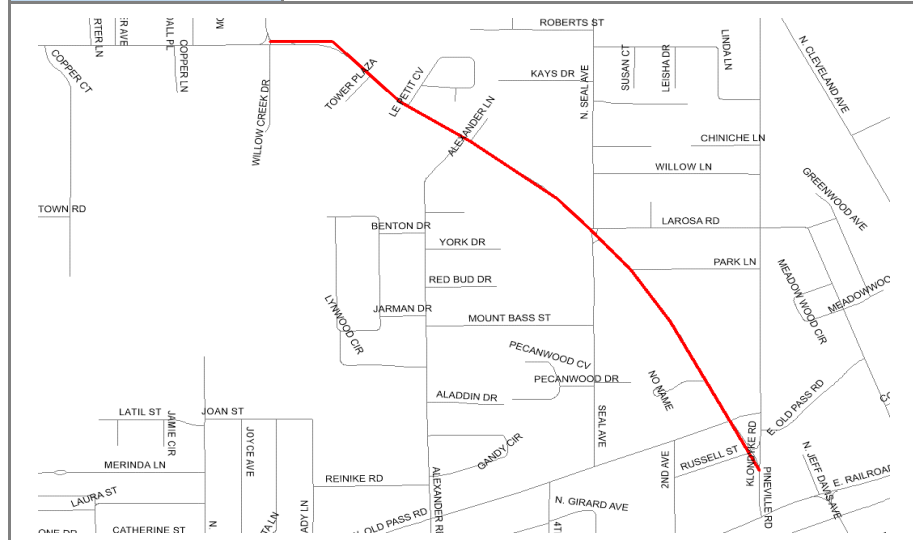
\*These projects are eligible for Special Match Credit if the LPA chooses to utilize

# Mississippi Gulf Coast Metropolitan Planning Organization

## FY2025-2028 Transportation Improvement Program (TIP)



<b>County</b>	Harrison	<b>Agency</b>	Long Beach
<b>Improvement Type</b>	Bike/Ped	<b>Route</b>	Pineville Road PH II
<b>Project Termini</b>	Harper McCaughan to Klondyke Road		
<b>Project Number</b>	107918		
<b>Project Description</b>	Pedestrian access and safety		



FY	Source	Phase	Federal	Local/Match	Total
2020		PE	\$0	\$97,300	\$97,300
2025		ROW	\$0	\$50,000	\$50,000
2025	TMA-CRP	CON	\$480,000	\$120,000	\$600,000
2025	TMA-STBG	CON	\$298,400	\$74,600	\$373,000
<b>Total Project Cost</b>			<b>\$778,400</b>	<b>\$341,900</b>	<b>\$1,120,300</b>

Project Notes					
Action	Add to TIP	Date	8/23/2020	Type	Amend
Remarks					
Action	Change funding source	Date	10/6/2022	Type	Mod
Remarks	Change from TMA-STBG to Carbon Reduction Program				
Action	Increase funding	Date	10/6/2022	Type	Mod
Remarks	Increase funding by 20%				
Action	Add fundinig	Date	8/8/2024	Type	Amend
Remarks	\$298,400				
Action		Date		Type	
Remarks					
Action		Date		Type	
Remarks					
Action		Date		Type	
Remarks					
*These projects are eligible for Special Match Credit if the LPA chooses to utilize					

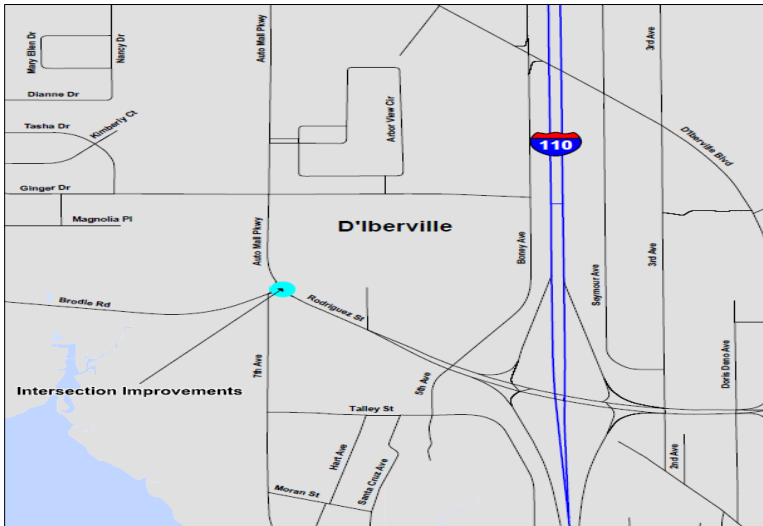


# Mississippi Gulf Coast Metropolitan Planning Organization

## FY2025-2028 Transportation Improvement Program (TIP)



<b>County</b>	Harrison	<b>Agency</b>	D' Iberville
<b>Improvement Type</b>	Intersection	<b>Route</b>	Brodie Road
<b>Project Termini</b>	Brodie Road – at Automall Parkway		
<b>Project Number</b>	108963		
<b>Project Description</b>	Project will improve traffic flow at the Brodie Road/Automall Parkway intersection with a roundabout. Project Purpose: Traffic flow		



FY	Source	Phase	Federal	Local/Match	Total
2025		PE	\$0	\$54,000	\$54,000
2025		ROW	\$0	\$50,000	\$50,000
2026	TMA-STBG	CON	\$432,000	\$108,000	\$540,000
<b>Total Project Cost</b>			<b>\$432,000</b>	<b>\$212,000</b>	<b>\$644,000</b>

Project Notes					
Action	Add to TIP	Date	8/1/2020	Type	Amend
Remarks	\$432,000				
Action		Date		Type	
Remarks					
Action		Date		Type	
Remarks					
Action		Date		Type	
Remarks					
Action		Date		Type	
Remarks					
Action		Date		Type	
Remarks					
Action		Date		Type	
Remarks					
*These projects are eligible for Special Match Credit if the LPA chooses to utilize					

# Mississippi Gulf Coast Metropolitan Planning Organization

## FY2025-2028 Transportation Improvement Program (TIP)



<b>County</b>	Harrison	<b>Agency</b>	Diberville
<b>Improvement Type</b>	Intersection	<b>Route</b>	Suzanne Drive
<b>Project Termini</b>	Suzanne Drive – at Automall Parkway		
<b>Project Number</b>	108964		
<b>Project Description</b>	Project will realign intersection from its current offset condition allowing east and west bound traffic to flow concurrently. Project Purpose: Traffic flow		



FY	Source	Phase	Federal	Local/Match	Total
2023		PE	\$0	\$108,131	\$108,131
2024		ROW	\$0	\$50,000	\$50,000
2025	TMA-STBG	CON	\$480,000	\$120,000	\$600,000
<b>Total Project Cost</b>			<b>\$480,000</b>	<b>\$278,131</b>	<b>\$758,131</b>

### Project Notes

Action	Add to TIP	Date	8/1/2020	Type	Amend
Remarks	\$480,000				
Action	Add Phases	Date	6/2/2023	Type	Mod
Remarks	Added PE for special match credit				
Action		Date		Type	
Remarks					
Action		Date		Type	
Remarks					
Action		Date		Type	
Remarks					
Action		Date		Type	
Remarks					
Action		Date		Type	
Remarks					

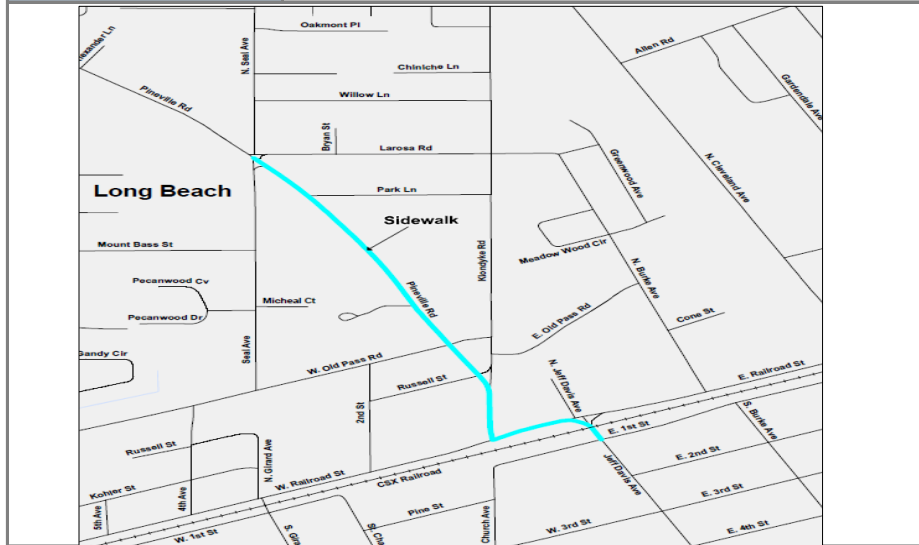
\*These projects are eligible for Special Match Credit if the LPA chooses to utilize

# Mississippi Gulf Coast Metropolitan Planning Organization

## FY2025-2028 Transportation Improvement Program (TIP)



<b>County</b>	Harrison	<b>Agency</b>	Long Beach
<b>Improvement Type</b>	Bike/Ped	<b>Route</b>	Pineville Road PH III
<b>Project Termini</b>	Seal Avenue to Railroad Street		
<b>Project Number</b>	108636		
<b>Project Description</b>	Continuation of previous projects on Pineville Road to connect to sidewalks on Jeff Davis Avenue. .71 mile		Project Length:



FY	Source	Phase	Federal	Local/Match	Total
2021		PE	\$0	\$101,472	\$101,472
2026		ROW	\$0	\$100,000	\$100,000
2027	TMA-STBG	CON	\$811,776	\$202,944	\$1,014,720
<b>Total Project Cost</b>			<b>\$811,776</b>	<b>\$404,416</b>	<b>\$1,216,192</b>

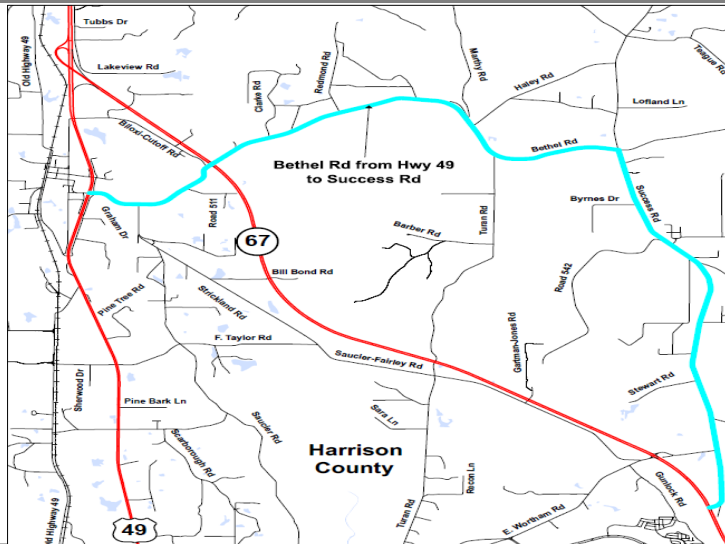
Project Notes					
Action	Add to TIP	Date	8/1/2020	Type	Amend
Remarks	\$600,000				
Action	Cost increase	Date	8/8/2024	Type	Amend
Remarks	\$211,776				
Action		Date		Type	
Remarks					
Action		Date		Type	
Remarks					
Action		Date		Type	
Remarks					
Action		Date		Type	
Remarks					
Action		Date		Type	
Remarks					
Action		Date		Type	
Remarks					
*These projects are eligible for Special Match Credit if the LPA chooses to utilize					

# Mississippi Gulf Coast Metropolitan Planning Organization

## FY2025-2028 Transportation Improvement Program (TIP)



<b>County</b>	Harrison	<b>Agency</b>	Harrison
<b>Improvement Type</b>	Multimodal	<b>Route</b>	Bethel Road/Success Road
<b>Project Termini</b>	Bethel Road – US 49 to Success Road /Success Road – Bethel Road to Hwy 67		
<b>Project Number</b>			
<b>Project Description</b>	Chip seal, fog seal, base and edge repairs, shoulder material, striping and pavement signs. Project Length: 9.5 miles		



FY	Source	Phase	Federal	Local/Match	Total
2025		PE	\$0	\$50,000	\$50,000
2025	TMA-STBG	CON	\$471,200	\$117,800	\$589,000
<b>Total Project Cost</b>			<b>\$471,200</b>	<b>\$167,800</b>	<b>\$639,000</b>

Project Notes					
Action	Add to TIP	Date	8/1/2020	Type	Amend
Remarks	\$471,200				
Action		Date		Type	
Remarks					
Action		Date		Type	
Remarks					
Action		Date		Type	
Remarks					
Action		Date		Type	
Remarks					
Action		Date		Type	
Remarks					
*These projects are eligible for Special Match Credit if the LPA chooses to utilize					

# Mississippi Gulf Coast Metropolitan Planning Organization

## FY2025-2028 Transportation Improvement Program (TIP)



<b>County</b>	Harrison	<b>Agency</b>	Biloxi	
<b>Improvement Type</b>	Intersection	<b>Route</b>	Pass Road	
<b>Project Termini</b>	at Rodenburg Avenue			
<b>Project Number</b>	109136			
<b>Project Description</b>	Upgrade intersection, add mast arms			



FY	Source	Phase	Federal	Local/Match	Total
2024		PE	\$0	\$63,070	\$63,070
2025		ROW	\$0	\$50,000	\$50,000
2025	TMA-CRP	CON	\$504,560	\$126,140	\$630,700
<b>Total Project Cost</b>			<b>\$504,560</b>	<b>\$239,210</b>	<b>\$743,770</b>

### Project Notes

<b>Action</b>	Add to TIP	<b>Date</b>	10/31/2021	<b>Type</b>	Amend
<b>Remarks</b>	New project - \$504,560 HIP				
<b>Action</b>	Funding swap	<b>Date</b>	6/26/2023	<b>Type</b>	Mod
<b>Remarks</b>	Changed funding source from HIP to CRP \$504,560				
<b>Action</b>		<b>Date</b>		<b>Type</b>	
<b>Remarks</b>					
<b>Action</b>		<b>Date</b>		<b>Type</b>	
<b>Remarks</b>					
<b>Action</b>		<b>Date</b>		<b>Type</b>	
<b>Remarks</b>					
<b>Action</b>		<b>Date</b>		<b>Type</b>	
<b>Remarks</b>					

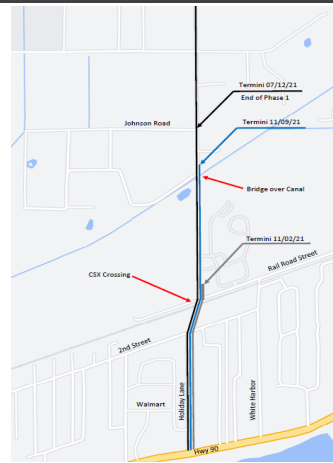
\*These projects are eligible for Special Match Credit if the LPA chooses to utilize

# Mississippi Gulf Coast Metropolitan Planning Organization

## FY2025-2028 Transportation Improvement Program (TIP)



<b>County</b>	Harrison	<b>Agency</b>	Long Beach
<b>Improvement Type</b>	New construction	<b>Route</b>	Beatline Parkway
<b>Project Termini</b>	US 90 to Johnson Road		
<b>Project Number</b>			
<b>Project Description</b>	The project will connect US 90 to Beatline Road by constructing a five-lane roadway with multiuse pathway.		



FY	Source	Phase	Federal	Local/Match	Total
2025	RAISE	PE	\$2,000,808	\$500,202	\$2,501,010
2025	RAISE	ROW	\$1,320,000	\$330,000	\$1,650,000
2025	RAISE	Railroad	\$1,012,000	\$253,000	\$1,265,000
2025	RAISE	CON	\$12,475,632	\$3,118,908	\$15,594,540
<b>Total Project Cost</b>			<b>\$16,808,440</b>	<b>\$4,202,110</b>	<b>\$21,010,550</b>

Project Notes					
Action	Add to TIP	Date	2/24/2022	Type	Amend
Remarks					
Action		Date		Type	
Remarks					
Action		Date		Type	
Remarks					
Action		Date		Type	
Remarks					
Action		Date		Type	
Remarks					
Action		Date		Type	
Remarks					
*These projects are eligible for Special Match Credit if the LPA chooses to utilize					

# Mississippi Gulf Coast Metropolitan Planning Organization

## FY2025-2028 Transportation Improvement Program (TIP)



<b>County</b>	Harrison County	<b>Agency</b>	Biloxi	
<b>Improvement Type</b>	Intersection	<b>Route</b>	Pass Road	
<b>Project Termini</b>	Iberville Drive			
<b>Project Number</b>				
<b>Project Description</b>	Project replaces old hanging traffic signals with new storm resistant mast arm traffic signals. Includes new pedesrian crossings.			



FY	Source	Phase	Federal	Local/Match	Total
Illustrative		PE	\$0	\$30,500	\$30,500
Illustrative		ROW	\$0	\$20,000	\$20,000
Illustrative		CON	\$0	\$107,640	\$538,200
<b>Total Project Cost</b>			<b>\$0</b>	<b>\$158,140</b>	<b>\$588,700</b>

### Project Notes

<b>Action</b>	Add to TIP	<b>Date</b>	8/4/2022	<b>Type</b>	Amend
<b>Remarks</b>	\$430,560				
<b>Action</b>	Funding swap	<b>Date</b>	6/27/2023	<b>Type</b>	Mod
<b>Remarks</b>	Change funding source from HIP to CRP - \$430,560				
<b>Action</b>	Remove funding	<b>Date</b>	11/12/2024	<b>Type</b>	Amend
<b>Remarks</b>	Remove \$430,560 from project to be used on Popp's Ext				
<b>Action</b>		<b>Date</b>		<b>Type</b>	
<b>Remarks</b>					
<b>Action</b>		<b>Date</b>		<b>Type</b>	
<b>Remarks</b>					
<b>Action</b>		<b>Date</b>		<b>Type</b>	
<b>Remarks</b>					
<b>Action</b>		<b>Date</b>		<b>Type</b>	
<b>Remarks</b>					
*These projects are eligible for Special Match Credit if the LPA chooses to utilize					

# Mississippi Gulf Coast Metropolitan Planning Organization

## FY2023-2026 Transportation Improvement Program (TIP)



<b>County</b>	Harrison County	<b>Agency</b>	Biloxi	
<b>Improvement Type</b>	Intersection	<b>Route</b>	Pass Road	
<b>Project Termini</b>	McDonnell Avenue			
<b>Project Number</b>				
<b>Project Description</b>	Project replaces old hanging traffic signals with new storm resistant mast arm traffic signals. Includes new pedesrian crossings.			



FY	Source	Phase	Federal	Local/Match	Total
Illustrative		PE	\$0	\$33,300	\$33,300
Illustrative		ROW	\$0	\$40,000	\$40,000
Illustrative	N/A	CON	\$0	\$122,180	\$610,900
<b>Total Project Cost</b>			<b>\$0</b>	<b>\$195,480</b>	<b>\$684,200</b>

Project Notes					
Action	Add to TIP	Date	8/4/2022	Type	Amend
Remarks	\$488,720				
Action	Deallocate funding	Date	10/3/2023	Type	Amend
Remarks	At City's request, deallocate and move to illustrative				
Action		Date		Type	
Remarks					
Action		Date		Type	
Remarks					
Action		Date		Type	
Remarks					
Action		Date		Type	
Remarks					
Action		Date		Type	
Remarks					
*These projects are eligible for Special Match Credit if the LPA chooses to utilize					

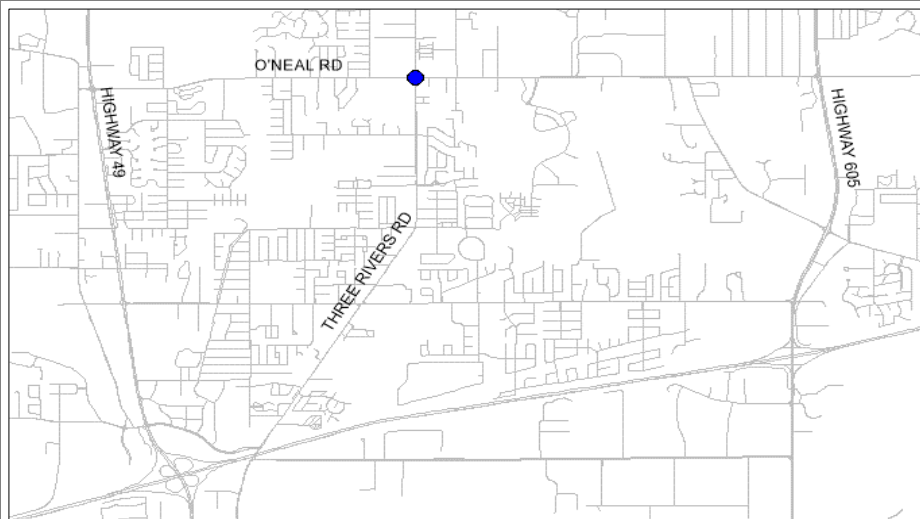


# Mississippi Gulf Coast Metropolitan Planning Organization

## FY2025-2028 Transportation Improvement Program (TIP)



<b>County</b>	Harrison	<b>Agency</b>	Gulfport	
<b>Improvement Type</b>	Intersection	<b>Route</b>	Oneal Road	
<b>Project Termini</b>	Three Rivers Road			
<b>Project Description</b>	Improvements include dedicated left and right turn lanes for north and southbound lanes along Three Rivers Road and mast arm traffic signals with liminaries and Glance monitoring system.			



FY	Source	Phase	Federal	Local/Match	Total
2026		PE	\$0	\$155,000	\$155,000
2027	TMA-STBG	CON	\$1,240,000	\$310,000	\$1,550,000
<b>Total Project Cost</b>			<b>\$1,240,000</b>	<b>\$465,000</b>	<b>\$1,705,000</b>

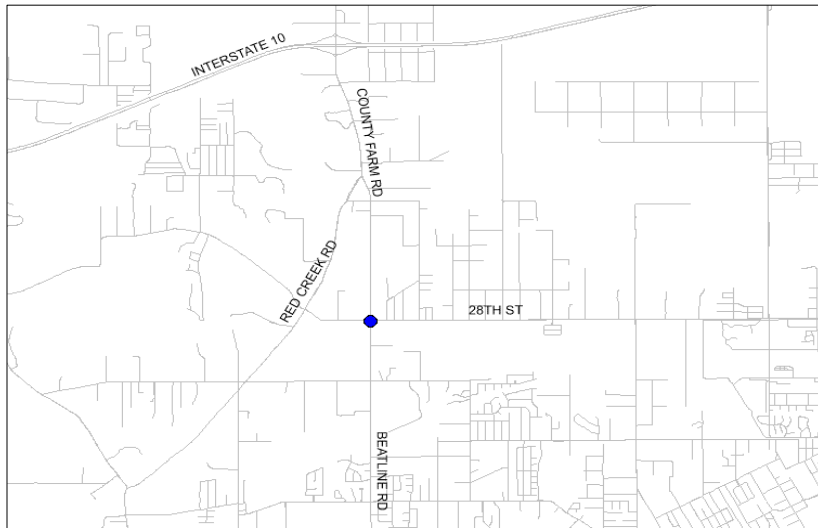
Project Notes					
Action	Add to TIP	Date	8/4/2022	Type	Amend
Remarks	\$440,000				
Action	Increase Cost	Date	8/8/2024	Type	Amend
Remarks	\$800,000				
Action		Date		Type	
Remarks					
Action		Date		Type	
Remarks					
Action		Date		Type	
Remarks					
Action		Date		Type	
Remarks					
Action		Date		Type	
Remarks					
*These projects are eligible for Special Match Credit if the LPA chooses to utilize					

# Mississippi Gulf Coast Metropolitan Planning Organization

## FY2025-2028 Transportation Improvement Program (TIP)



<b>County</b>	Harrison County	<b>Agency</b>	Long Beach	
<b>Improvement Type</b>	Intersection	<b>Route</b>	Beatline Road	
<b>Project Termini</b>	28th Street			
<b>Project Number</b>	109328			
<b>Project Description</b>	The addition of turning lanes, striping and a flashing beacon are proposed for this intersection			



### Project Notes

Action	Add to TIP	Date	8/4/2022	Type	Amend
Remarks	\$287,750				
Action		Date		Type	
Remarks					
Action		Date		Type	
Remarks					
Action		Date		Type	
Remarks					
Action		Date		Type	
Remarks					
Action		Date		Type	
Remarks					

FY	Source	Phase	Federal	Local/Match	Total
2026		PE	\$0	\$36,365	\$36,365
2026		ROW	\$0	\$50,000	\$50,000
2027	TMA-STBG	CON	\$287,750	\$75,750	\$363,650
<b>Total Project Cost</b>			<b>\$287,750</b>	<b>\$162,115</b>	<b>\$450,015</b>

\*These projects are eligible for Special Match Credit if the LPA chooses to utilize

# Mississippi Gulf Coast Metropolitan Planning Organization

## FY2025-2028 Transportation Improvement Program (TIP)



<b>County</b>	Harrison County	<b>Agency</b>	Long Beach
<b>Improvement Type</b>	Intersection	<b>Route</b>	Jeff Davis Avenue
<b>Project Termini</b>	West Railroad Street		
<b>Project Number</b>			
<b>Project Description</b>	Additional turn lanes, striping, and miscellaneous intersection improvements at W. Railroad St. and Jeff Davis Ave.		



FY	Source	Phase	Federal	Local/Match	Total
2026		PE	\$0	\$80,913	\$80,913
2026		ROW	\$0	\$50,000	\$50,000
2027	TMA-STBG	CON	\$647,304	\$161,826	\$809,130
<b>Total Project Cost</b>			<b>\$647,304</b>	<b>\$292,739</b>	<b>\$940,043</b>

Project Notes					
Action	Add to TIP	Date	8/4/2022	Type	Amend
Remarks	\$542,800				
Action	Project description	Date	11/8/2022	Type	Mod
Remarks	Provided an improved project description				
Action	Break out project	Date	8/8/2024	Type	Amend
Remarks	3 downtown interections into seprate projects				
Action	Increase cost	Date	8/8/2024	Type	Amend
Remarks	Add \$104,504				
Action		Date		Type	
Remarks					
Action		Date		Type	
Remarks					
Action		Date		Type	
Remarks					
*These projects are eligible for Special Match Credit if the LPA chooses to utilize					

# Mississippi Gulf Coast Metropolitan Planning Organization

## FY2025-2028 Transportation Improvement Program (TIP)



<b>County</b>	Harrison County	<b>Agency</b>	Long Beach
<b>Improvement Type</b>	Intersection	<b>Route</b>	Klondyke Road
<b>Project Termini</b>	West Railroad Street		
<b>Project Number</b>			
<b>Project Description</b>	The construction of a roundabout at Klondyke Road and W. Railroad Street.		



FY	Source	Phase	Federal	Local/Match	Total
2027		PE	\$0	\$275,466	\$275,466
2027		ROW	\$0	\$50,000	\$50,000
2028	TMA-STBG	CON	\$93,069	\$23,267	\$116,336
<b>Total Project Cost</b>			<b>\$93,069</b>	<b>\$348,733</b>	<b>\$441,802</b>

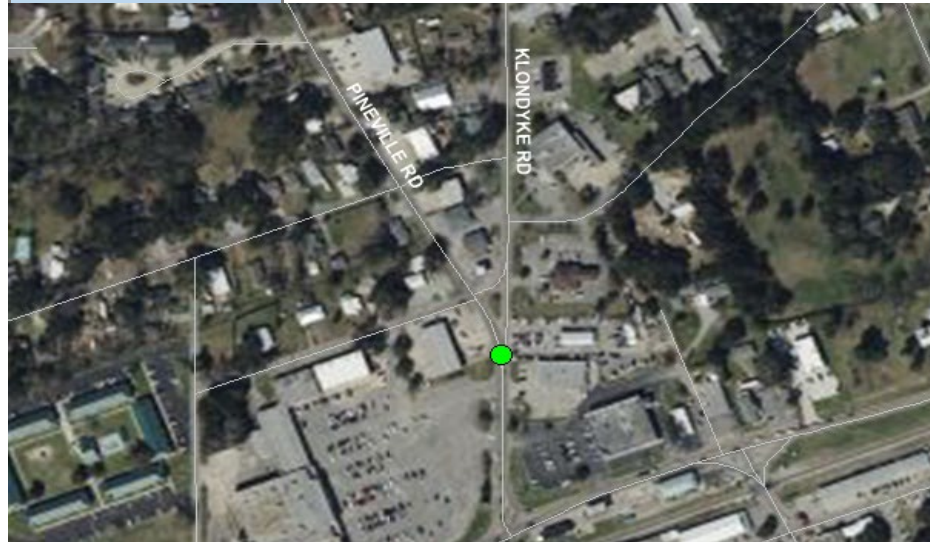
Project Notes					
Action	Add to TIP	Date	8/4/2022	Type	Amend
Remarks	\$542,800				
Action	Project description	Date	11/8/2022	Type	Mod
Remarks	Provided an improved project description				
Action	Break out project	Date	8/8/2024	Type	Amend
Remarks	3 downtown interections into seprate projects				
Action	Increase cost	Date	8/8/2024	Type	Amend
Remarks	\$2,203,732				
Action	Reduce funding	Date	11/25/2024	Type	Amend
Remarks	Move \$2,110,663 to Cleveland Ave Widening				
Action		Date		Type	
Remarks					
Action		Date		Type	
Remarks					
*These projects are eligible for Special Match Credit if the LPA chooses to utilize					

# Mississippi Gulf Coast Metropolitan Planning Organization

## FY2025-2028 Transportation Improvement Program (TIP)



<b>County</b>	Harrison County	<b>Agency</b>	Long Beach
<b>Improvement Type</b>	Intersection	<b>Route</b>	Klondyke Road
<b>Project Termini</b>	Pineville Road		
<b>Project Number</b>			
<b>Project Description</b>	The addition of signalization at Klondyke and Pineville Roads.		



FY	Source	Phase	Federal	Local/Match	Total
2026		PE	\$0	\$122,949	\$122,949
2026		ROW	\$0	\$50,000	\$50,000
2027	TMA-STBG	CON	\$983,595	\$245,899	\$1,229,494
<b>Total Project Cost</b>			<b>\$983,595</b>	<b>\$418,848</b>	<b>\$1,402,443</b>

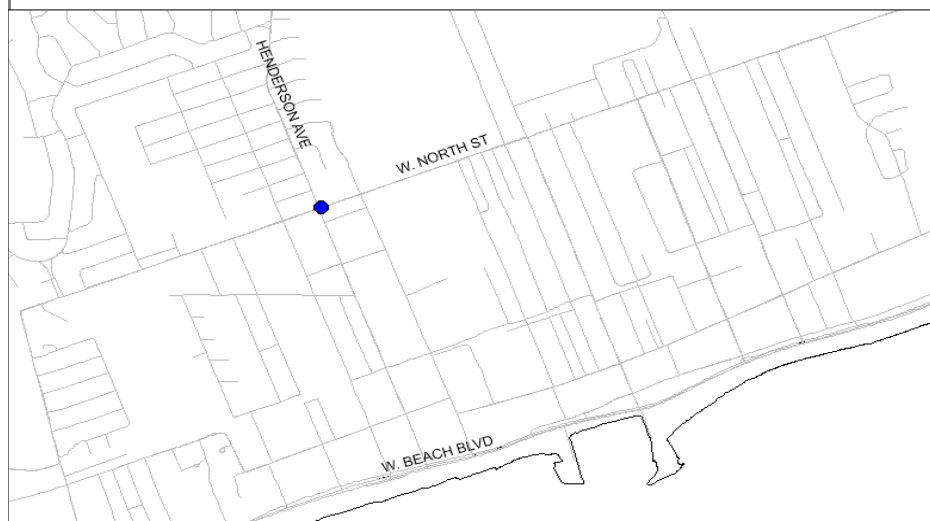
Project Notes					
Action	Add to TIP	Date	8/4/2022	Type	Amend
Remarks	\$542,800				
Action	Project description	Date	11/8/2022	Type	Mod
Remarks	Provided an improved project description				
Action	Break out project	Date	8/8/2024	Type	Amend
Remarks	3 downtown interections into seprate projects				
Action	Increase cost	Date	8/8/2024	Type	Amend
Remarks	\$983,595				
Action		Date		Type	
Remarks					
Action		Date		Type	
Remarks					
Action		Date		Type	
Remarks					
*These projects are eligible for Special Match Credit if the LPA chooses to utilize					

# Mississippi Gulf Coast Metropolitan Planning Organization

## FY2025-2028 Transportation Improvement Program (TIP)



<b>County</b>	Harrison County	<b>Agency</b>	Pass Christian
<b>Improvement Type</b>	Intersection	<b>Route</b>	North Street
<b>Project Termini</b>	Henderson Avenue		
<b>Project Number</b>			
<b>Project Description</b>	This project adds signalization, turn lanes, striping and pedestrian crossings to provide more efficient and safer travel in the area.		



FY	Source	Phase	Federal	Local/Match	Total
2026		PE	\$0	\$60,908	\$60,908
2026		ROW	\$0	\$100,000	\$100,000
2027	TMA-STBG	CON	\$487,264	\$121,816	\$609,080
<b>Total Project Cost</b>			<b>\$487,264</b>	<b>\$282,724</b>	<b>\$769,988</b>

Project Notes					
Action	Add to TIP	Date	8/4/2022	Type	Amend
Remarks	\$487,264				
Action		Date		Type	
Remarks					
Action		Date		Type	
Remarks					
Action		Date		Type	
Remarks					
Action		Date		Type	
Remarks					
Action		Date		Type	
Remarks					
*These projects are eligible for Special Match Credit if the LPA chooses to utilize					

# Mississippi Gulf Coast Metropolitan Planning Organization

## FY2025-2028 Transportation Improvement Program (TIP)



<b>County</b>	Harrison	<b>Agency</b>	Gulfport
<b>Improvement Type</b>	Multimodal	<b>Route</b>	Washington Avenue
<b>Project Termini</b>	Airport Road to South Vista Drive		
<b>Project Number</b>			
<b>Project Description</b>	Widen Washington Avenue to a divided 4-lane, add street lighting, and minimal drainage improvements. This project will connect to Gulfport's Airport Road Roundabout Project (#107222) which can be found in this TIP document.		



FY	Source	Phase	Federal	Local/Match	Total
2026		PE	\$0	\$350,000	\$350,000
2026		ROW	\$0	\$50,000	\$50,000
2027	TMA-STBG	CON	\$2,800,000	\$700,000	\$3,500,000
<b>Total Project Cost</b>			<b>\$2,800,000</b>	<b>\$1,100,000</b>	<b>\$3,900,000</b>

Project Notes					
Action	Add to TIP	Date	8/4/2022	Type	Amend
Remarks	\$2,800,000				
Action		Date		Type	
Remarks					
Action		Date		Type	
Remarks					
Action		Date		Type	
Remarks					
Action		Date		Type	
Remarks					
Action		Date		Type	
Remarks					
*These projects are eligible for Special Match Credit if the LPA chooses to utilize					

# Mississippi Gulf Coast Metropolitan Planning Organization

## FY2025-2028 Transportation Improvement Program (TIP)



<b>County</b>	Harrison	<b>Agency</b>	Diberville
<b>Improvement Type</b>	Intersection/Multimodal	<b>Route</b>	Mallet Road - Lamey Bridge Rd
<b>Project Termini</b>	Mallett/Sangani Blvd from East Wal Mart Dr to Daisy Vestry Rd and Lamey Bridge Rd from I-110 to Cypress Creek		
<b>Project Number</b>	109147		
<b>Project Description</b>	The project includes reconfiguring the Mallet Rd/Lamey Bridge Rd intersection and widening of Mallett Road, an existing three lane roadway, from Lamey Bridge Road to Daisy Vestry Road to match the four lane sections on either end of this roadway segment.		



FY	Source	Phase	Federal	Local/Match	Total
2023	MS Bond Bill	PE	\$0	\$ 1,000,000	\$ 1,000,000
2025	MS Bond Bill	ROW	\$0	\$ 2,100,000	\$ 2,100,000
2025	MS Bond Bill	CON	\$0	\$4,650,000	\$ 4,650,000
2025	TMA-CRP	CON	\$1,500,000	\$375,000	\$1,875,000
2025	DOT-HIP	CON	\$2,000,000	\$500,000	\$2,500,000
	N/A	CON	\$0	\$2,675,000	\$2,675,000
<b>Total Project Cost</b>			<b>\$3,500,000</b>	<b>\$11,300,000</b>	<b>\$14,800,000</b>

### Project Notes

<b>Action</b>	Combine	<b>Date</b>	3/14/2024	<b>Type</b>	Amend
<b>Remarks</b>	Combine Mallet Intersection and Roadway Projects				
<b>Action</b>	Add funding	<b>Date</b>	8/8/2024	<b>Type</b>	Amend
<b>Remarks</b>	1500000 TMA-CRP - Call for projects				
<b>Action</b>	Add funding	<b>Date</b>	8/8/2024	<b>Type</b>	Amend
<b>Remarks</b>	\$2000000 THUD - DOT-HIP				
<b>Action</b>		<b>Date</b>		<b>Type</b>	
<b>Remarks</b>					
<b>Action</b>		<b>Date</b>		<b>Type</b>	
<b>Remarks</b>					
<b>Action</b>		<b>Date</b>		<b>Type</b>	
<b>Remarks</b>					
<b>Action</b>		<b>Date</b>		<b>Type</b>	
<b>Remarks</b>					

\*These projects are eligible for Special Match Credit if the LPA chooses to utilize



# Mississippi Gulf Coast Metropolitan Planning Organization

## FY2025-2028 Transportation Improvement Program (TIP)



<b>County</b>	Harrison	<b>Agency</b>	Diberville
<b>Improvement Type</b>	Bike/Ped	<b>Route</b>	New ped bridge and walking path
<b>Project Termini</b>	Gorenflo Road to new recreation area		
<b>Project Number</b>			
<b>Project Description</b>	The Bicycle and Pedestrian Bridge will parallel the Lamey Bridge Road I-10 Overpass just to the East, providing a safe alternative to the underserved neighborhoods to the south of I-10 to access the D'Iberville commercial area and recreation opportunities.		



FY	Source	Phase	Federal	Local/Match	Total
Illustrative	N/A	PE	\$0	\$ 450,000	\$ 450,000
Illustrative	N/A	ENV	\$0	\$ 450,000	\$ 450,000
Illustrative	N/A	ROW	\$0	\$ 500,000	\$ 500,000
Illustrative	N/A	CON	\$0	\$ 10,764,000	\$ 10,764,000
<b>Total Project Cost</b>			<b>\$0</b>	<b>\$12,164,000</b>	<b>\$12,164,000</b>

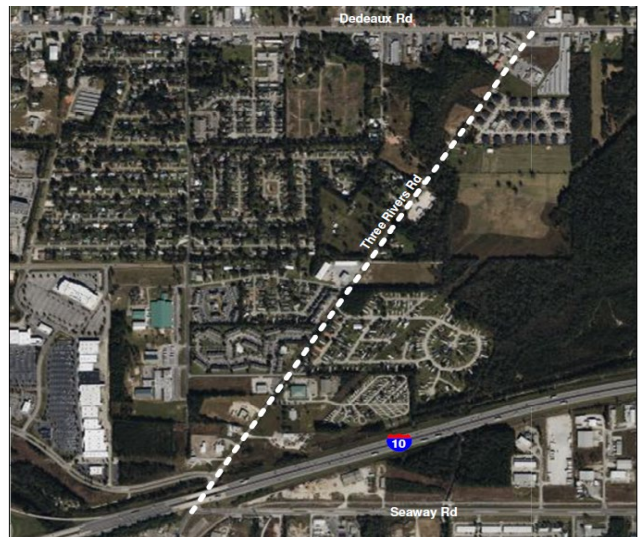
Project Notes					
Action	Add to TIP	Date	3/9/2023	Type	Amend
Remarks	No funding in place - RAISE grant requested				
Action		Date		Type	
Remarks					
Action		Date		Type	
Remarks					
Action		Date		Type	
Remarks					
Action		Date		Type	
Remarks					
Action		Date		Type	
Remarks					
Action		Date		Type	
Remarks					
*These projects are eligible for Special Match Credit if the LPA chooses to utilize					

# Mississippi Gulf Coast Metropolitan Planning Organization

## FY2025-2028 Transportation Improvement Program (TIP)



<b>County</b>	Harrison	<b>Agency</b>	Gulfport
<b>Improvement Type</b>	Multimodal	<b>Route</b>	Three Rivers Road
<b>Project Termini</b>	Seaway Road to Dedeaux Road		
<b>Project Number</b>			
<b>Project Description</b>	Widen Three Rivers Road and provide pedestrian pathways		



### Project Notes

<b>Action</b>	Add to TIP	<b>Date</b>	3/9/2023	<b>Type</b>	Amend
<b>Remarks</b>	No funding in place - RAISE grant requested				
<b>Action</b>		<b>Date</b>		<b>Type</b>	
<b>Remarks</b>					
<b>Action</b>		<b>Date</b>		<b>Type</b>	
<b>Remarks</b>					
<b>Action</b>		<b>Date</b>		<b>Type</b>	
<b>Remarks</b>					
<b>Action</b>		<b>Date</b>		<b>Type</b>	
<b>Remarks</b>					
<b>Action</b>		<b>Date</b>		<b>Type</b>	
<b>Remarks</b>					

FY	Source	Phase	Federal	Local/Match	Total
Illustrative	N/A	PE	\$0	\$ 3,292,719	\$ 3,292,719
Illustrative	N/A	ENV	\$0	\$ 1,365,416	\$ 1,365,416
Illustrative	N/A	ROW	\$0	\$ 7,601,168	\$ 7,601,168
Illustrative	N/A	CON	\$0	\$ 10,787,258	\$ 10,787,258
<b>Total Project Cost</b>			<b>\$0</b>	<b>\$23,046,561</b>	<b>\$23,046,561</b>

\*These projects are eligible for Special Match Credit if the LPA chooses to utilize

# Mississippi Gulf Coast Metropolitan Planning Organization

## FY2025-2028 Transportation Improvement Program (TIP)



<b>County</b>	Harrison	<b>Agency</b>	Coast Transit Authority
<b>Improvement Type</b>	Multimodal	<b>Route</b>	
<b>Project Termini</b>			
<b>Project Number</b>			
<b>Project Description</b>	Coast Transit Authority/Memorial Hospital Gulfport Intermodal Facility		



### Project Notes

Action	Add to TIP	Date	3/14/2024	Type	Amend
Remarks	No funding in place - RAISE grant requested				
Action		Date		Type	
Remarks					
Action		Date		Type	
Remarks					
Action		Date		Type	
Remarks					
Action		Date		Type	
Remarks					
Action		Date		Type	
Remarks					

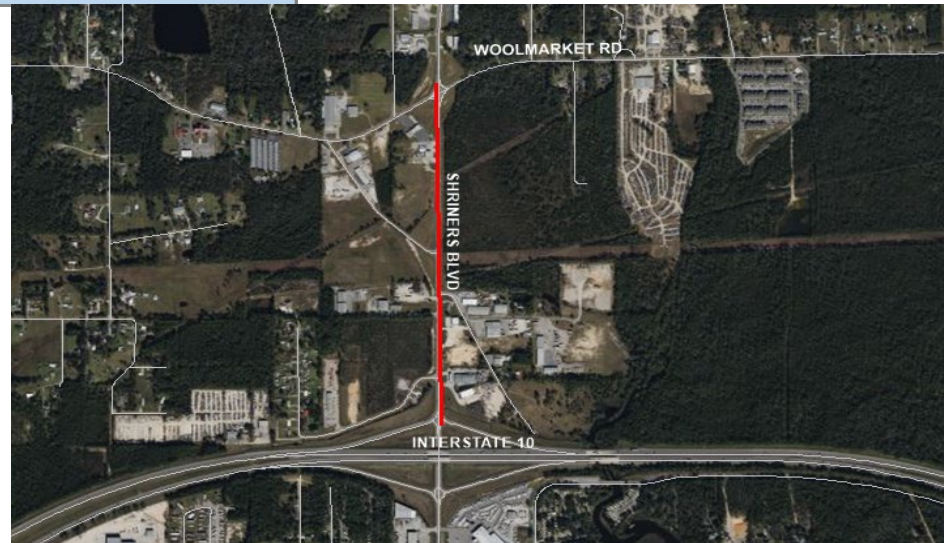
FY	Source	Phase	Federal	Local/Match	Total
Illustrative	N/A	CON	\$0	\$23,962,848	\$ 23,962,848
<b>Total Project Cost</b>			<b>\$0</b>	<b>\$23,962,848</b>	<b>\$23,962,848</b>

# Mississippi Gulf Coast Metropolitan Planning Organization

## FY2025-2028 Transportation Improvement Program (TIP)



<b>County</b>	Harrison	<b>Agency</b>	Biloxi
<b>Improvement Type</b>	Multimodal	<b>Route</b>	Shriners Boulevard
<b>Project Termini</b>	I-10 to Woolmarket Road		
<b>Project Number</b>			
<b>Project Description</b>	This project will upgrade Shriners Blvd. from two lanes to four lanes with a center median with turn bays. In addition to the additional lanes, this project will add multi-use pathways, drainage, striping, signage, and other associated appurtenances.		



### Project Notes

Action	New Project	Date	8/8/2024	Type	Amend
Remarks	\$2,760,000				
Action		Date		Type	
Remarks					
Action		Date		Type	
Remarks					
Action		Date		Type	
Remarks					
Action		Date		Type	
Remarks					
Action		Date		Type	
Remarks					
Action		Date		Type	
Remarks					

FY	Source	Phase	Federal	Local/Match	Total
2027		PE	\$0	\$345,000	\$345,000
2028	TMA-STBG	CON	\$2,760,000	\$ 690,000	\$ 3,450,000
<b>Total Project Cost</b>			<b>\$2,760,000</b>	<b>\$1,035,000</b>	<b>\$3,795,000</b>

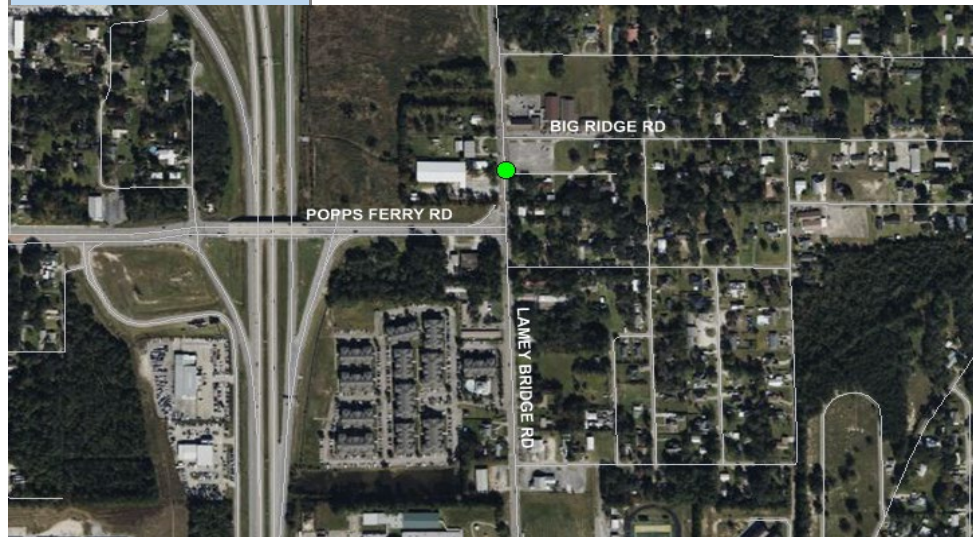
\*These projects are eligible for Special Match Credit if the LPA chooses to utilize

# Mississippi Gulf Coast Metropolitan Planning Organization

## FY2025-2028 Transportation Improvement Program (TIP)



<b>County</b>	Harrison	<b>Agency</b>	D'Iberville
<b>Improvement Type</b>	Intesection	<b>Route</b>	Lamey Bridge Road
<b>Project Termini</b>	Big Ridge Road & Popp's Ferry Road		
<b>Project Number</b>			
<b>Project Description</b>	Project will construct northbound right turn lane from Lamey Bridge Road onto Big Ridge Road as well as the construction to complete the southbound right turn lane from Lamey Bridge Road onto Popp's Ferry Road.		



FY	Source	Phase	Federal	Local/Match	Total
2027		PE	\$0	\$71,311	\$71,311
2027		ROW	\$0	\$50,000	\$50,000
2028	TMA-CRP	CON	\$570,492	\$ 142,623	\$ 713,115
<b>Total Project Cost</b>			<b>\$570,492</b>	<b>\$263,934</b>	<b>\$834,426</b>

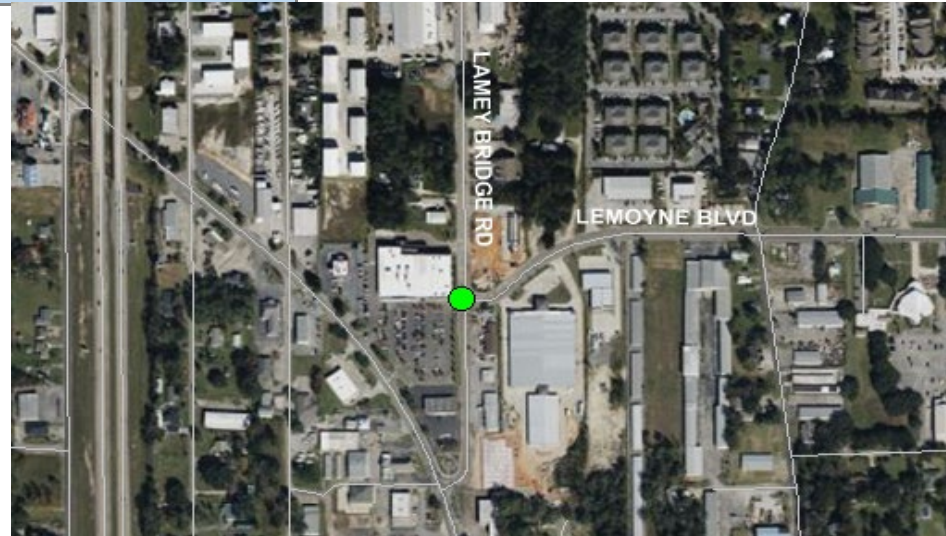
Project Notes					
Action	New Project	Date	8/8/2024	Type	Amend
Remarks	\$570,492				
Action		Date		Type	
Remarks					
Action		Date		Type	
Remarks					
Action		Date		Type	
Remarks					
Action		Date		Type	
Remarks					
Action		Date		Type	
Remarks					
Action		Date		Type	
Remarks					
*These projects are eligible for Special Match Credit if the LPA chooses to utilize					

# Mississippi Gulf Coast Metropolitan Planning Organization

## FY2025-2028 Transportation Improvement Program (TIP)



<b>County</b>	Harrison	<b>Agency</b>	D'Iberville
<b>Improvement Type</b>	Intersection	<b>Route</b>	Lamey Bridge Road
<b>Project Termini</b>	Lemoine Boulevard		
<b>Project Number</b>			
<b>Project Description</b>	Project will realign the lanes on the east and west sides of the intersection as well as adding a dedicated left turn lane for northbound traffic on Lamey Bridge Road into WalMart and a dedicated left turn lane for westbound traffic on Lemoine Boulevard onto Lamey Bridge Road. Project will also add pedestrian signals for protecting pedestrians crossing on the north side of intersection from Lemoine Boulevard to Walmart.		



FY	Source	Phase	Federal	Local/Match	Total
2027		PE	\$0	\$126,078	\$126,078
2027		ROW	\$0	\$50,000	\$50,000
2028	TMA-CRP	CON	\$888,628	\$ 222,157	\$ 1,110,785
<b>Total Project Cost</b>			<b>\$888,628</b>	<b>\$398,235</b>	<b>\$1,286,863</b>

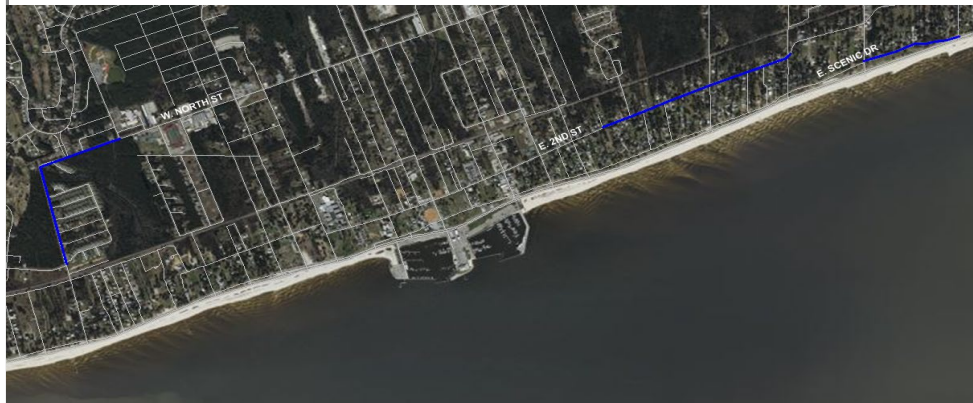
Project Notes					
Action	New Project	Date	8/8/2024	Type	Amend
Remarks	\$888,628				
Action		Date		Type	
Remarks					
Action		Date		Type	
Remarks					
Action		Date		Type	
Remarks					
Action		Date		Type	
Remarks					
Action		Date		Type	
Remarks					
Action		Date		Type	
Remarks					
*These projects are eligible for Special Match Credit if the LPA chooses to utilize					

# Mississippi Gulf Coast Metropolitan Planning Organization

## FY2025-2028 Transportation Improvement Program (TIP)



<b>County</b>	Harrison	<b>Agency</b>	Pass Christian
<b>Improvement Type</b>	Bike/Ped	<b>Route</b>	City Wide
<b>Project Termini</b>	Cedar Ave, North St, Scenic Dr, and Second St		
<b>Project Number</b>			
<b>Project Description</b>	Along West North Street westerly and southerly on Cedar Avenue to Brill Street for 2,500 lf; Along East Second Street from Algernon to Lang Avenue for a distance of 4,277 lf; and, on East Scenic Drive from Menge Avenue to U.S. Hwy 90		



FY	Source	Phase	Federal	Local/Match	Total
2027		PE	\$0	\$136,568	\$136,568
2028	TMA-STBG	CON	\$1,092,548	\$ 273,137	\$ 1,365,685
<b>Total Project Cost</b>			<b>\$1,092,548</b>	<b>\$409,705</b>	<b>\$1,502,253</b>

### Project Notes

<b>Action</b>	New Project	<b>Date</b>	8/8/2024	<b>Type</b>	Amend
<b>Remarks</b>	\$1,092,548 TMA-STBG				
<b>Action</b>		<b>Date</b>		<b>Type</b>	
<b>Remarks</b>					
<b>Action</b>		<b>Date</b>		<b>Type</b>	
<b>Remarks</b>					
<b>Action</b>		<b>Date</b>		<b>Type</b>	
<b>Remarks</b>					
<b>Action</b>		<b>Date</b>		<b>Type</b>	
<b>Remarks</b>					
<b>Action</b>		<b>Date</b>		<b>Type</b>	
<b>Remarks</b>					
<b>Action</b>		<b>Date</b>		<b>Type</b>	
<b>Remarks</b>					

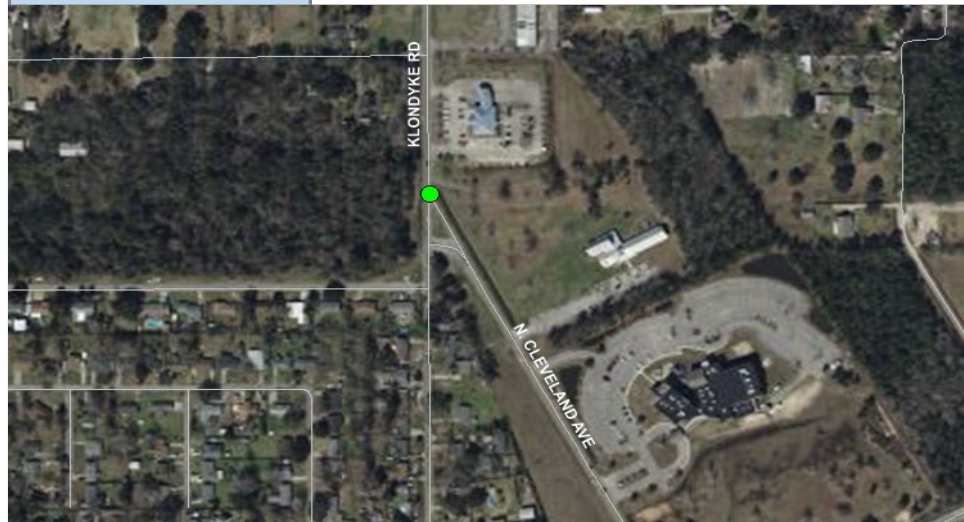
\*These projects are eligible for Special Match Credit if the LPA chooses to utilize

# Mississippi Gulf Coast Metropolitan Planning Organization

## FY2025-2028 Transportation Improvement Program (TIP)



<b>County</b>	Harrison	<b>Agency</b>	Long Beach
<b>Improvement Type</b>	Intersection	<b>Route</b>	Klondyke Road
<b>Project Termini</b>	Cleveland Avenue		
<b>Project Number</b>			
<b>Project Description</b>	The project proposes replacing the existing abnormal alignment at Klondyke Road / Cleveland Avenue intersection with a roundabout intersection.		



FY	Source	Phase	Federal	Local/Match	Total
2027		PE	\$0	\$216,314	\$216,314
2028	TMA-STBG	CON	\$1,443,715	\$ 360,929	\$ 1,804,644
2028	TMA-CRP	CON	\$286,797	\$ 71,699	\$ 358,496
<b>Total Project Cost</b>			<b>\$1,730,512</b>	<b>\$648,942</b>	<b>\$2,379,454</b>

Project Notes					
Action	New Project	Date	8/8/2024	Type	Amend
Remarks	1442715 TMA-STBG, 286797 TMA-CRP				
Action		Date		Type	
Remarks					
Action		Date		Type	
Remarks					
Action		Date		Type	
Remarks					
Action		Date		Type	
Remarks					
Action		Date		Type	
Remarks					
*These projects are eligible for Special Match Credit if the LPA chooses to utilize					



# Mississippi Gulf Coast Metropolitan Planning Organization

## FY2025-2028 Transportation Improvement Program (TIP)



<b>County</b>	Harrison	<b>Agency</b>	Harrison County Development Commission	
<b>Improvement Type</b>	SEAWAY PUBLIC ACCESS INTERMODAL FACILITY		<b>Route</b>	Reicold Road
<b>Project Termini</b>				
<b>Project Number</b>				
<b>Project Description</b>	The project will fund the construction of a small intermodal transload site which will encompass three components of transportation, the Bernard Bayou Seaway, Rail and Trucking. This new inland port will bring more business and revenue to the MS coast area and benefit the entire surrounding public as a whole.			



FY	Source	Phase	Federal	Local/Match	Total
2025	CRISI	CON	\$2,400,000	\$ 600,000	\$ 3,000,000
2025	N/A	CON	\$0	\$ 4,664,967	\$ 4,664,967
<b>Total Project Cost</b>			<b>\$2,400,000</b>	<b>\$5,264,967</b>	<b>\$7,664,967</b>

### Project Notes

Action	New Project	Date	8/8/2024	Type	Amend
Remarks	PIDP requested \$3,731,974				
Action		Date		Type	
Remarks					
Action		Date		Type	
Remarks					
Action		Date		Type	
Remarks					
Action		Date		Type	
Remarks					
Action		Date		Type	
Remarks					

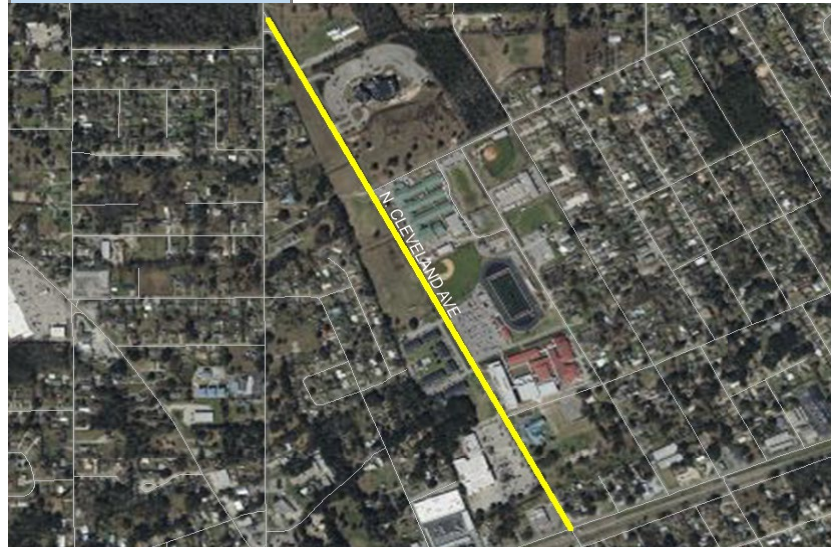
\*These projects are eligible for Special Match Credit if the LPA chooses to utilize

# Mississippi Gulf Coast Metropolitan Planning Organization

## FY2025-2028 Transportation Improvement Program (TIP)



<b>County</b>	Harrison County	<b>Agency</b>	Long Beach
<b>Improvement Type</b>	Widening	<b>Route</b>	Cleveland Ave
<b>Project Termini</b>	Klondyke Rd to West Railroad Street		
<b>Project Number</b>			
<b>Project Description</b>	A continuous left center turn lane is proposed to mitigate traffic stacking along the roadway.		



FY	Source	Phase	Federal	Local/Match	Total
2027		PE	\$0	\$300,000	\$300,000
2027		ROW	\$0	\$50,000	\$50,000
2028	TMA-STBG	CON	\$2,110,663	\$527,665	\$2,638,328
<b>Total Project Cost</b>			<b>\$2,110,663</b>	<b>\$877,665</b>	<b>\$2,988,328</b>

Project Notes					
Action	Add project	Date	11/25/2024	Type	Amend
Remarks	Funding moved from Klondyke @ RR intersection				
Action		Date		Type	
Remarks					
Action		Date		Type	
Remarks					
Action		Date		Type	
Remarks					
Action		Date		Type	
Remarks					
Action		Date		Type	
Remarks					
*These projects are eligible for Special Match Credit if the LPA chooses to utilize					

# **Jackson County**

# Mississippi Gulf Coast Metropolitan Planning Organization

## FY2025-2028 Transportation Improvement Program (TIP)



<b>County</b>	Jackson	<b>Agency</b>	Moss Point
<b>Improvement Type</b>	Intersection	<b>Route</b>	I-10 Frontage
<b>Project Termini</b>	MS 613 and MS 63		
<b>Project Number</b>	109717		
<b>Project Description</b>	I-10 Interstate Commerce District		



FY	Source	Phase	Federal	Local/Match	Total
2027		PE	\$0	\$562,500	\$562,500
2027		ROW	\$0	\$100,000	\$100,000
2028	HIP Earmark	CON	\$4,500,000	\$1,125,000	\$5,625,000
<b>Total Project Cost</b>			<b>\$4,500,000</b>	<b>\$1,787,500</b>	<b>\$6,287,500</b>

### Project Notes

Action	Add to TIP	Date	7/12/2021	Type	Mod
Remarks	New project				
Action	Funding Source	Date	12/8/2022	Type	Amend
Remarks	Add funding source HIP Earmark				
Action		Date		Type	
Remarks					
Action		Date		Type	
Remarks					
Action		Date		Type	
Remarks					
Action		Date		Type	
Remarks					

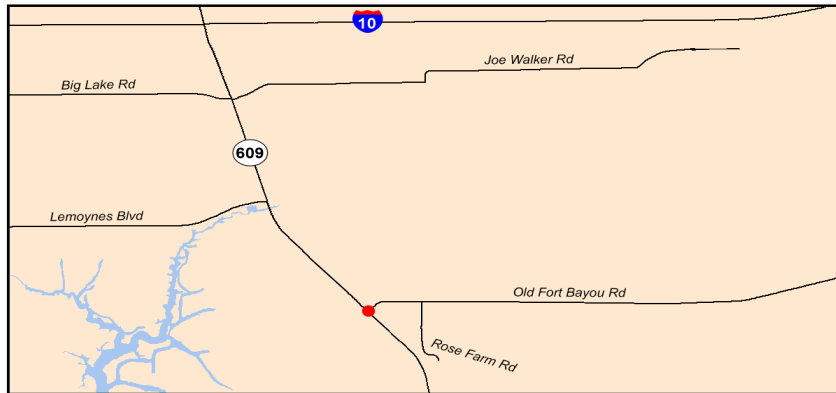
\*These projects are eligible for Special Match Credit if the LPA chooses to utilize

# Mississippi Gulf Coast Metropolitan Planning Organization

## FY2025-2028 Transportation Improvement Program (TIP)



<b>County</b>	Jackson	<b>Agency</b>	Jackson County
<b>Improvement Type</b>	Intersection	<b>Route</b>	Hwy 609
<b>Project Termini</b>	Hwy 609 and Old Fort Bayou Road		
<b>Project Number</b>	106888		
<b>Project Description</b>	Intersection realignment to alleviate congestion and improve safety. Project includes median, striping, turning lanes, pedestrian crossing and signalization.		



Project Notes					
Action	Add to TIP	Date	8/25/2016	Type	Amend
Remarks	\$1,493,640 STP				
Action	Change Year	Date	9/25/2014	Type	Mod
Remarks	Move from FY17 to FY18				
Action	Change Year	Date	12/10/2015	Type	Mod
Remarks	Move from FY18 to FY19				
Action	Change Year	Date	2/23/2017	Type	Mod
Remarks	Move from FY19 to FY20				
Action	Change Year	Date	10/3/2019	Type	Mod
Remarks	Move from FY20 to FY21				
Action	Add HIP funding	Date	10/31/2021	Type	Amend
Remarks	Add \$750,000 HIP funds				
Action	Swap funds	Date	6/26/2023	Type	Mod
Remarks	Swap \$750,000 HIP to TMA-STBG				
Action		Date		Type	
Remarks					
Action		Date		Type	
Remarks					
*These projects are eligible for Special Match Credit if the LPA chooses to utilize					

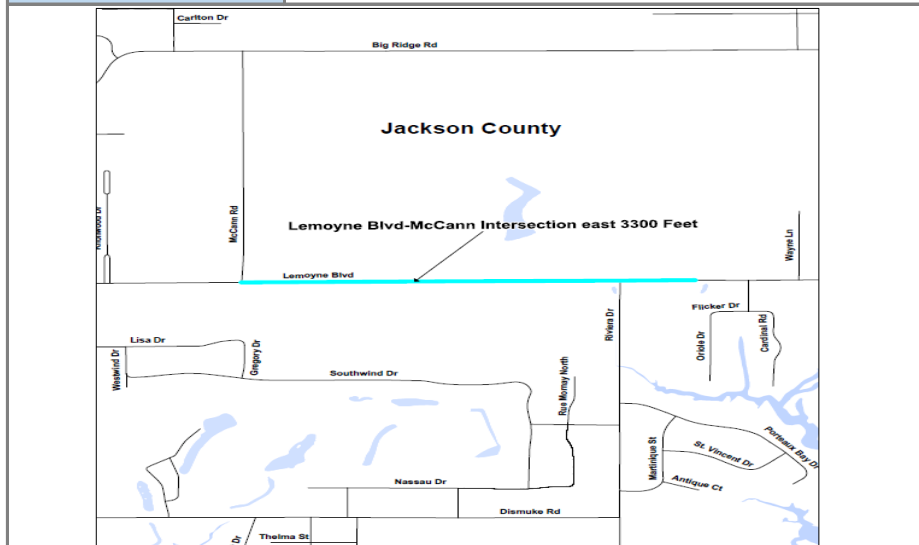
FY	Source	Phase	Federal	Local/Match	Total
2025		PE	\$0	\$280,455	\$280,455
2025		ROW	\$0	\$50,000	\$50,000
2026	TMA-STBG	CON	\$2,243,640	\$560,910	\$2,804,550
<b>Total Project Cost</b>			<b>\$2,243,640</b>	<b>\$891,365</b>	<b>\$3,135,005</b>

# Mississippi Gulf Coast Metropolitan Planning Organization

## FY2025-2028 Transportation Improvement Program (TIP)



<b>County</b>	Jackson	<b>Agency</b>	Jackson County
<b>Improvement Type</b>	Bike/Ped	<b>Route</b>	Lemoyne Boulevard
<b>Project Termini</b>	McCann Road to 3300 feet to the east		
<b>Project Number</b>			
<b>Project Description</b>	New sidewalks from new signalized intersection. Project Length: .64 mile		



FY	Source	Phase	Federal	Match	Total
2024		PE	\$0	\$50,980	\$50,980
2025	TMA-STBG	CON	\$407,845	\$101,961	\$509,806
<b>Total Project Cost</b>			<b>\$407,845</b>	<b>\$152,941</b>	<b>\$560,786</b>

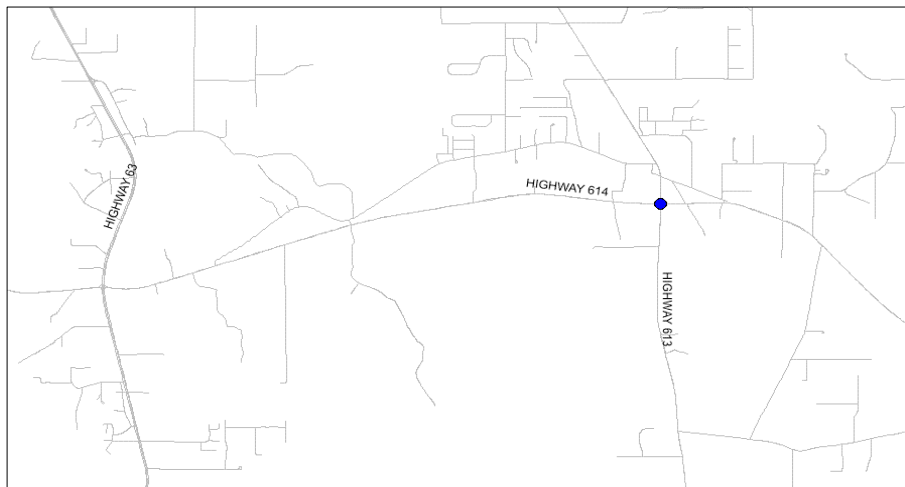
Project Notes					
Action	Add to TIP	Date	8/1/2020	Type	Amend
Remarks	\$262,151				
Action	Increase funding	Date	9/1/2023	Type	Amend
Remarks	Add \$145,694 STBG TMA - \$262,151 to \$407,845				
Action		Date		Type	
Remarks					
Action		Date		Type	
Remarks					
Action		Date		Type	
Remarks					
Action		Date		Type	
Remarks					
Action		Date		Type	
Remarks					
*These projects are eligible for Special Match Credit if the LPA chooses to utilize					

# Mississippi Gulf Coast Metropolitan Planning Organization

## FY2025-2028 Transportation Improvement Program (TIP)



<b>County</b>	Jackson County	<b>Agency</b>	Jackson County
<b>Improvement Type</b>	Intersection	<b>Route</b>	Hwy 613
<b>Project Termini</b>	Hwy 614		
<b>Project Number</b>	109547		
<b>Project Description</b>	A roundabout will be constructed to ease traffic congestion at this major intersection of the growing East Central County area.		



FY	Source	Phase	Federal	Local/Match	Total
2024		PE	\$0	\$75,000	\$75,000
2025	TMA-STBG	CON	\$600,000	\$150,000	\$750,000
<b>Total Project Cost</b>			<b>\$600,000</b>	<b>\$225,000</b>	<b>\$825,000</b>

### Project Notes

<b>Action</b>	Add to TIP	<b>Date</b>	8/4/2022	<b>Type</b>	Amend
<b>Remarks</b>	\$600,000				
<b>Action</b>	Funding source	<b>Date</b>	1/29/2024	<b>Type</b>	Mod
<b>Remarks</b>	Change source from Non-urban to TMA-STBG				
<b>Action</b>		<b>Date</b>		<b>Type</b>	
<b>Remarks</b>					
<b>Action</b>		<b>Date</b>		<b>Type</b>	
<b>Remarks</b>					
<b>Action</b>		<b>Date</b>		<b>Type</b>	
<b>Remarks</b>					
<b>Action</b>		<b>Date</b>		<b>Type</b>	
<b>Remarks</b>					
<b>Action</b>		<b>Date</b>		<b>Type</b>	
<b>Remarks</b>					

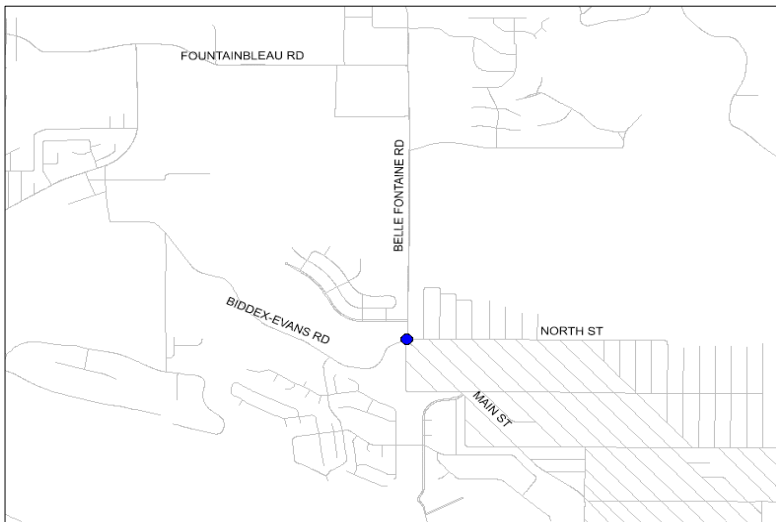
\*These projects are eligible for Special Match Credit if the LPA chooses to utilize

# Mississippi Gulf Coast Metropolitan Planning Organization

## FY2025-2028 Transportation Improvement Program (TIP)



<b>County</b>	Jackson County	<b>Agency</b>	Jackson County
<b>Improvement Type</b>	Intersection	<b>Route</b>	Biddix Evans Road
<b>Project Termini</b>	Main Street		
<b>Project Number</b>	109548		
<b>Project Description</b>	This project will redesign the congested and dangerous 5 legged intersection		



FY	Source	Phase	Federal	Local/Match	Total
2026		PE	\$0	\$150,000	\$150,000
2026		ROW	\$0	\$100,000	\$100,000
2027	TMA-STBG	CON	\$1,200,000	\$300,000	\$1,500,000
<b>Total Project Cost</b>			<b>\$1,200,000</b>	<b>\$550,000</b>	<b>\$1,750,000</b>

### Project Notes

<b>Action</b>	Add to TIP	<b>Date</b>	8/4/2022	<b>Type</b>	Amend
<b>Remarks</b>	\$1,200,000				
<b>Action</b>		<b>Date</b>		<b>Type</b>	
<b>Remarks</b>					
<b>Action</b>		<b>Date</b>		<b>Type</b>	
<b>Remarks</b>					
<b>Action</b>		<b>Date</b>		<b>Type</b>	
<b>Remarks</b>					
<b>Action</b>		<b>Date</b>		<b>Type</b>	
<b>Remarks</b>					
<b>Action</b>		<b>Date</b>		<b>Type</b>	
<b>Remarks</b>					
<b>Action</b>		<b>Date</b>		<b>Type</b>	
<b>Remarks</b>					

\*These projects are eligible for Special Match Credit if the LPA chooses to utilize

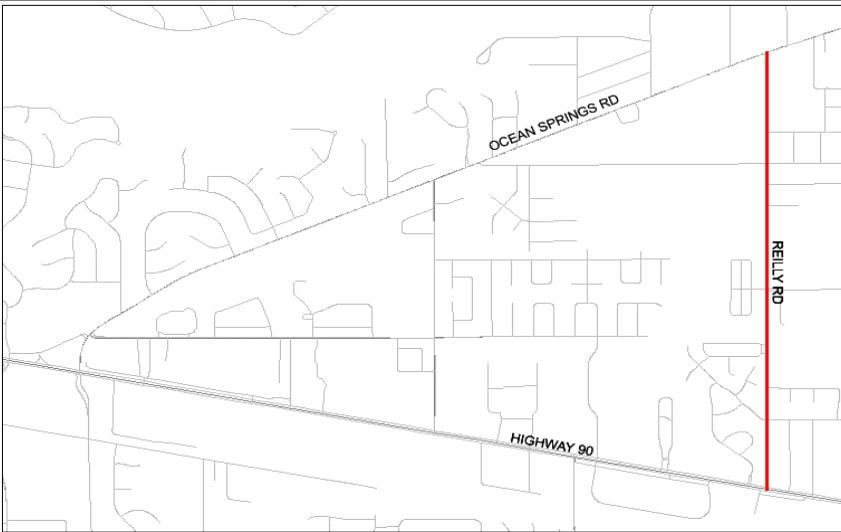


# Mississippi Gulf Coast Metropolitan Planning Organization

## FY2025-2028 Transportation Improvement Program (TIP)



<b>County</b>	Jackson County	<b>Agency</b>	Ocean Springs
<b>Improvement Type</b>	Multimodal	<b>Route</b>	Riley Road
<b>Project Termini</b>	Ocean Springs Road to US 90		
<b>Project Number</b>	109329		
<b>Project Description</b>	Widening the roadway to compliant travel lanes and adding a combination of sidewalks and multi-use pathways.		



FY	Source	Phase	Federal	Local/Match	Total
2024		PE	\$0	\$574,606	\$574,606
2025		ROW	\$0	\$100,000	\$100,000
2025	TMA-STBG	CON	\$3,346,854	\$836,714	\$4,183,568
2025	HIP THUD	CON	\$1,250,000	\$312,500	\$1,562,500
<b>Total Project Cost</b>			<b>\$4,596,854</b>	<b>\$1,823,820</b>	<b>\$6,420,674</b>

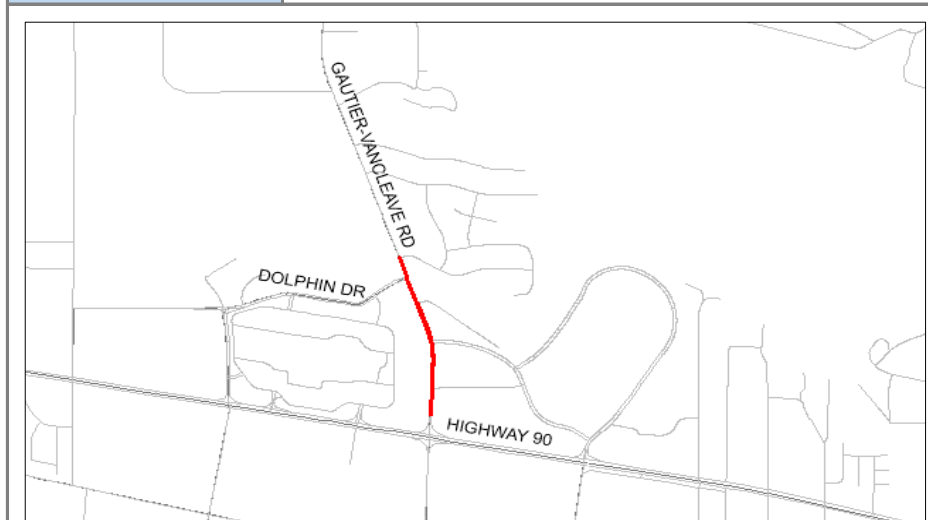
Project Notes					
Action	Add to TIP	Date	8/4/2022	Type	Amend
Remarks	\$934,054				
Action	Change funding	Date	6/29/2023	Type	Mod
Remarks	Swap HIP funding for TMA-STBG funding - \$177,681				
Action	Add PE	Date	10/6/2023	Type	Mod
Remarks	Add PE funding				
Action	Change FY	Date	10/6/2023	Type	Mod
Remarks	Move from Illustrative to FY 2026				
Action	Increase cost	Date	8/8/2024	Type	Amend
Remarks	2412800 TMA STBG				
Action	Add funds	Date	8/8/2024	Type	Amend
Remarks	1250000 HIP THUD				
Action		Date		Type	
Remarks					
Action		Date		Type	
Remarks					
*These projects are eligible for Special Match Credit if the LPA chooses to utilize					

# Mississippi Gulf Coast Metropolitan Planning Organization

## FY2025-2028 Transportation Improvement Program (TIP)



<b>County</b>	Jackson County	<b>Agency</b>	Gautier
<b>Improvement Type</b>	Bike/Ped	<b>Route</b>	Gautier-Vancleave Road
<b>Project Termini</b>	Valleywood to US 90		
<b>Project Number</b>			
<b>Project Description</b>	Sidewalks to fill gap		



FY	Source	Phase	Federal	Local/Match	Total
2025		PE	\$0	\$26,895	\$26,895
2026	Non Urb	CON	\$215,160	\$53,790	\$268,950
<b>Total Project Cost</b>			<b>\$215,160</b>	<b>\$80,685</b>	<b>\$295,845</b>

Project Notes					
Action	Add to TIP	Date	8/4/2022	Type	Amend
Remarks	\$215,160				
Action		Date		Type	
Remarks					
Action		Date		Type	
Remarks					
Action		Date		Type	
Remarks					
Action		Date		Type	
Remarks					
Action		Date		Type	
Remarks					
Action		Date		Type	
Remarks					
*These projects are eligible for Special Match Credit if the LPA chooses to utilize					

# Mississippi Gulf Coast Metropolitan Planning Organization

## FY2025-2028 Transportation Improvement Program (TIP)



<b>County</b>	Jackson County	<b>Agency</b>	Gautier
<b>Improvement Type</b>	Intersection	<b>Route</b>	Dolphin Drive
<b>Project Termini</b>	CSX RR		
<b>Project Number</b>			
<b>Project Description</b>	Dolphin Drive two-lane bridge over CSX Railroad- Old Spanish Trail will have to be raised to accommodate the height of the bridge, and its use will be affected; however, the citizens of Gautier have other alternatives for access during construction; especially with the extension of Guillotteville Road, which would be constructed prior to the grade separated crossing for traffic control.		



### Project Notes

<b>Action</b>	Add to TIP	<b>Date</b>	12/8/2022	<b>Type</b>	Amend
<b>Remarks</b>	No funding - App for RR Crossing Elimination Program				
<b>Action</b>		<b>Date</b>		<b>Type</b>	
<b>Remarks</b>					
<b>Action</b>		<b>Date</b>		<b>Type</b>	
<b>Remarks</b>					
<b>Action</b>		<b>Date</b>		<b>Type</b>	
<b>Remarks</b>					
<b>Action</b>		<b>Date</b>		<b>Type</b>	
<b>Remarks</b>					
<b>Action</b>		<b>Date</b>		<b>Type</b>	
<b>Remarks</b>					

FY	Source	Phase	Federal	Local/Match	Total
illustrative	Unfunded	PE	\$0	\$700,000	\$700,000
illustrative	Unfunded	ENV	\$0	\$700,000	\$700,000
illustrative	Unfunded	CON	\$0	\$13,800,000	\$13,800,000
<b>Total Project Cost</b>			<b>\$0</b>	<b>\$15,200,000</b>	<b>\$15,200,000</b>

\*These projects are eligible for Special Match Credit if the LPA chooses to utilize

# Mississippi Gulf Coast Metropolitan Planning Organization

## FY2025-2028 Transportation Improvement Program (TIP)



<b>County</b>	Jackson County	<b>Agency</b>	Moss Point
<b>Improvement Type</b>	Intersection	<b>Route</b>	Dantzler Street
<b>Project Termini</b>	Main Street		
<b>Project Number</b>			
<b>Project Description</b>	This project will realign Dantzler Street to enhance access to the Moss Point Welcome Center. The current offset driveway will be removed and replaced with parking. Parking spaces will be added at the realigned intersection as well as crosswalk improvements for pedestrians.		



FY	Source	Phase	Federal	Local/Match	Total
2025		PE	\$0	\$32,500	\$32,500
2025		ROW	\$0	\$50,000	\$50,000
2025	Non-Urb	CON	\$260,000	\$65,000	\$325,000
<b>Total Project Cost</b>			<b>\$260,000</b>	<b>\$147,500</b>	<b>\$407,500</b>

### Project Notes

<b>Action</b>	Add to TIP	<b>Date</b>	12/8/2022	<b>Type</b>	Amend
<b>Remarks</b>	\$260,000 Non-Urban STBG				
<b>Action</b>		<b>Date</b>		<b>Type</b>	
<b>Remarks</b>					
<b>Action</b>		<b>Date</b>		<b>Type</b>	
<b>Remarks</b>					
<b>Action</b>		<b>Date</b>		<b>Type</b>	
<b>Remarks</b>					
<b>Action</b>		<b>Date</b>		<b>Type</b>	
<b>Remarks</b>					
<b>Action</b>		<b>Date</b>		<b>Type</b>	
<b>Remarks</b>					

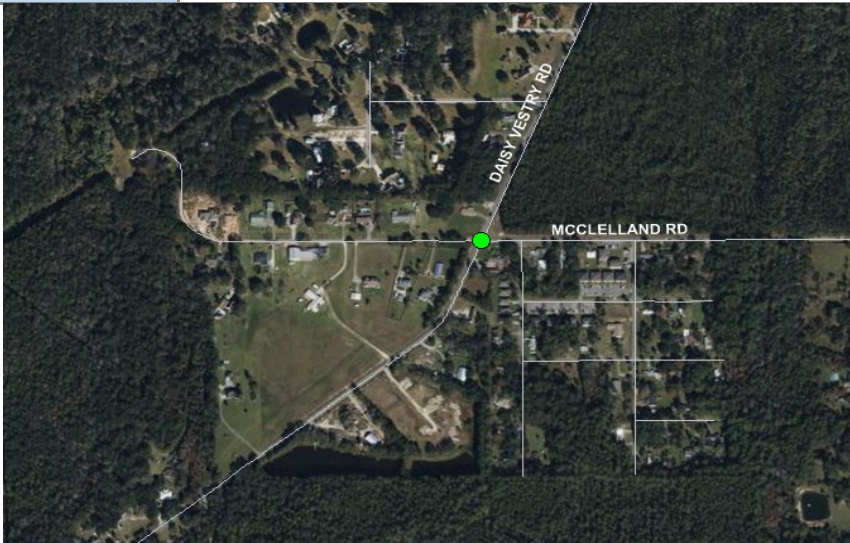
\*These projects are eligible for Special Match Credit if the LPA chooses to utilize

# Mississippi Gulf Coast Metropolitan Planning Organization

## FY2025-2028 Transportation Improvement Program (TIP)



<b>County</b>	Jackson County	<b>Agency</b>	Jackson County
<b>Improvement Type</b>	Intersection	<b>Route</b>	Daisy Vestry Rd
<b>Project Termini</b>	McClelland Rd		
<b>Project Number</b>			
<b>Project Description</b>	This intersection improvement project will provide a safer intersection with the addition of a new left turn lane and two right turn through lanes.		



FY	Source	Phase	Federal	Local/Match	Total
2027		PE	\$0	\$117,942	\$117,942
2027		ROW	\$0	\$50,000	\$50,000
2028	TMA-CRP	CON	\$943,536	\$235,884	\$1,179,420
<b>Total Project Cost</b>			<b>\$943,536</b>	<b>\$403,826</b>	<b>\$1,347,362</b>

Project Notes					
Action	Add to TIP	Date	8/8/2024	Type	Amend
Remarks	\$943,536				
Action		Date		Type	
Remarks					
Action		Date		Type	
Remarks					
Action		Date		Type	
Remarks					
Action		Date		Type	
Remarks					
Action		Date		Type	
Remarks					
Action		Date		Type	
Remarks					
*These projects are eligible for Special Match Credit if the LPA chooses to utilize					

# Mississippi Gulf Coast Metropolitan Planning Organization

## FY2025-2028 Transportation Improvement Program (TIP)



<b>County</b>	Jackson County	<b>Agency</b>	Ocean Springs
<b>Improvement Type</b>	Intersection	<b>Route</b>	US 90
<b>Project Termini</b>	MLK Jr Ave & Washington Ave		
<b>Project Number</b>			
<b>Project Description</b>	This project will support intersection improvements on Highway 90 at Washington Avenue and at MLK/Vermont. The concepts were created through a previous TIP-funded study at these location. Improvements will include crosswalks, modified timing for traffic lights, modifications to the lane configurations and patterns, and installation of channelized medians along the adjacent frontage roads.		



FY	Source	Phase	Federal	Local/Match	Total
2027		PE	\$0	\$97,100	\$97,100
2028	TMA-STBG	CON	\$696,800	\$174,200	\$871,000
<b>Total Project Cost</b>			<b>\$696,800</b>	<b>\$271,300</b>	<b>\$968,100</b>

Project Notes					
Action	Add to TIP	Date	8/8/2024	Type	Amend
Remarks	\$696,800				
Action		Date		Type	
Remarks					
Action		Date		Type	
Remarks					
Action		Date		Type	
Remarks					
Action		Date		Type	
Remarks					
Action		Date		Type	
Remarks					
*These projects are eligible for Special Match Credit if the LPA chooses to utilize					

# Mississippi Gulf Coast Metropolitan Planning Organization

## FY2025-2028 Transportation Improvement Program (TIP)



<b>County</b>	Jackson County	<b>Agency</b>	Pascagoula
<b>Improvement Type</b>	Planning Study	<b>Route</b>	Complete Streets Approaches
<b>Project Termini</b>	Market St, 14th St, Old Mobile Hwy, Ingalls Ave		
<b>Project Number</b>			
<b>Project Description</b>	This project will plan for the addition of bike lanes, sidewalk network improvements, and other pedestrian amenities. Additionally, the project will plan for access management improvements and upgrades to water, wastewater, and broadband infrastructure.		



FY	Source	Phase	Federal	Local/Match	Total
2025	RAISE	Planning	\$1,000,000	\$0	\$1,000,000
<b>Total Project Cost</b>			<b>\$1,000,000</b>	<b>\$0</b>	<b>\$1,000,000</b>

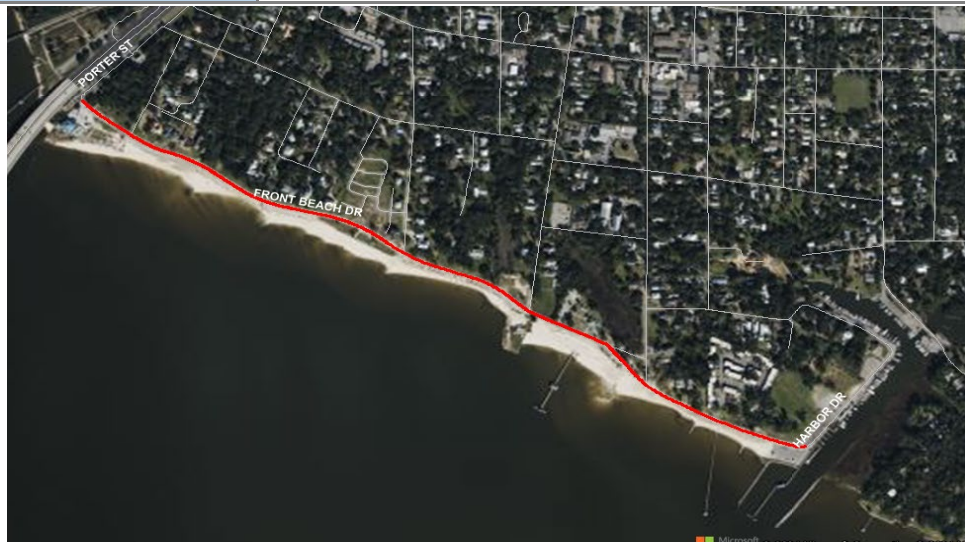
Project Notes					
Action	Add to TIP	Date	11/15/2024	Type	Amend
Remarks	\$1,000,000				
Action		Date		Type	
Remarks					
Action		Date		Type	
Remarks					
Action		Date		Type	
Remarks					
Action		Date		Type	
Remarks					
Action		Date		Type	
Remarks					
*These projects are eligible for Special Match Credit if the LPA chooses to utilize					

# Mississippi Gulf Coast Metropolitan Planning Organization

## FY2025-2028 Transportation Improvement Program (TIP)



<b>County</b>	Jackson County	<b>Agency</b>	Ocean Springs
<b>Improvement Type</b>	Multimodal	<b>Route</b>	Front Beach Drive
<b>Project Termini</b>	Porter Avenue to Harbor Road		
<b>Project Number</b>			
<b>Project Description</b>	The project will underseal through injection of a cementitious material beneath the existing concrete seawall to fill any voids that may have arisen over time.		



### Project Notes

Action	Add to TIP	Date	8/8/2024	Type	Amend
Remarks	Unfunded				
Action		Date		Type	
Remarks					
Action		Date		Type	
Remarks					
Action		Date		Type	
Remarks					
Action		Date		Type	
Remarks					
Action		Date		Type	
Remarks					

FY	Source	Phase	Federal	Local/Match	Total
		PE	\$0	\$50,000	\$50,000
III	N/A	CON	\$0	\$7,200,000	\$7,200,000
<b>Total Project Cost</b>			<b>\$0</b>	<b>\$7,250,000</b>	<b>\$7,250,000</b>

\*These projects are eligible for Special Match Credit if the LPA chooses to utilize





# Mississippi Gulf Coast Metropolitan Planning Organization

## FY2025-2028 Transportation Improvement Program (TIP)

### Safety Group

#### Group Description

The Safety Group is used to fund projects in the MPO’s Safety Program. Gulf Regional Planning Commission serving as staff for the MPO provides planning work described in its Unified Planning Work Program (UPWP) that is used to identify projects to be developed and funded with the Safety Group. The Mississippi Gulf Coast MPO will set aside \$500,000 of its annual allocation of STBG funds for projects to enhance the safe mobility of all modes of transportation on the Mississippi Gulf Coast. GRPC works with FHWA to develop projects that will be eligible for the Federal share payable to amount to 100 percent of the cost of construction of such projects as described in 23 U.S.C. 120 (c) and 23 CFR 652.9. Projects will be selected by GRPC for funding through this program, coordinated with the applicable local public agency and initiated as needed without the requirement of a TIP amendment.

Agency	Number	Project Description	Source	Scope	Date added	Fed. Funds
CTA	107661	Traffic Signal Priority - Various intersections in Gulfport and Biloxi	TMA-STBG	Intersection	7/20/2017	\$571,618
GRPC	106744	Safety Projects PH II -- Jackson County	TMA-STBG	Safety		\$550,000
GRPC	106742	Safety Projects PH II -- Harrison County	TMA-STBG	Safety		\$550,000
GRPC	106743	Safety Projects PH II -- Hancock County	TMA-STBG	Safety		\$510,000

*\*These projects are eligible for Special Match Credit if the LPA chooses to utilize*



# Mississippi Gulf Coast Metropolitan Planning Organization

## FY2025-2028 Transportation Improvement Program (TIP)

### Studies/Projects Group

Project “Scoping” is the phase in the Project Development process that moves a recognized problem from an idea through the development of alternatives and environmental screening.

Agency	Number	Project Description	Phase	Funding	Date added	Federal Funds
Bay St. Louis	107956	Multiuse Pathway Study	Scoping	TMA - STBG	8/23/2018	\$8,000
Gulfport		Pavement Management	Scoping	TMA - STBG	12/5/2019	\$80,000
Bay St. Louis	108452	City ADA Improvements	Scoping	TMA - STBG	12/5/2019	\$50,000
Long Beach	108517	Beatline Parkway	ENV	TMA - STBG	12/5/2019	\$150,000
				HIP Congressional Earmark	12/8/2022	\$150,000
GRPC	109397	Airport Connector Feasibility Study	Scoping	TMA - STBG	12/8/2022	\$80,000
GRPC	109330	Moss Point Interstate Interchange Study	Scoping	HB 1413	3/9/2023	\$300,000
D'Iberville	109542	Rodriguez Street / I-110 Traffic Study	Scoping	TMA - STBG	3/9/2023	\$78,400
Pascagoula	109553	14th Street Road Diet	Scoping	Non-Urban STBG	11/2/2023	\$39,920
Jackson County	109585	Slider Road	Scoping	TMA - STBG	12/11/2023	\$30,400
Jackson County		Ocean Springs Middle School	Scoping	TMA - STBG	12/11/2023	\$36,000



## Mississippi Gulf Coast Metropolitan Planning Organization FY2025-2028 Transportation Improvement Program (TIP)

### Transportation Alternatives (TA) Group

The Transportation Alternatives (TA) Set-Aside from the Surface Transportation Block Grant (STBG) Program provides funding for a variety of generally smaller-scale transportation projects such as pedestrian and bicycle facilities.

Agency	Project Description		Date added	Fed. Funds
Diamondhead	Monjoy Creek Pathway - Diamonhead Drive to Rotten Bayou	TA	8/23/2019	\$80,000
Hancock County	Washington Street ADA Beach Access	TA	8/23/2019	\$590,000
Gulfport	Old Hwy 49 Sidewalks - Robinson Road to Dedeaux Road	TA	8/23/2019	\$160,000
Gulfport	Old Hwy 49 Sidewalks - Robinson Road to Dedeaux Road	TA	8/8/2024	\$160,000
Bay St Louis	Beyer Street - Carroll Avenue to Ranch Street	TA	8/23/2019	\$280,000
Bay St Louis	Beyer Street - Carroll Avenue to Ranch Street	TMA-STBG	4/19/2024	\$116,240
Waveland	St. Joseph Street Herlihy Street and Old Spanish Trail	TA	10/22/2020	\$500,000
Waveland	St. Joseph Street Herlihy Street and Old Spanish Trail	TMA-STBG	12/5/2023	\$100,000
Diamondhead	East Aloha Drive PH II Veterans Drive and Kalani Drive	TA	10/22/2020	\$489,866
Diamondhead	East Aloha Drive PH II Veterans Drive and Kalani Drive	TMA-STBG	8/8/2024	\$339,680
Diberville	Lamey Bridge Road - School to Diberville Blvd, Lemoyne Gorenflo	TA	8/4/2022	\$558,400
Bay St Louis	Felicity Street, Seube Street, Pine Street, and Ranch Street	TA	8/4/2022	\$1,288,803
Bay St Louis	Felicity Street, Seube Street, Pine Street, and Ranch Street	TA	8/8/2024	\$581,371
Hancock County	Texas Flat Road - McLoed Park to School - Santa Rosa Pathway	TA	8/4/2022	\$755,565
Gulfport	Seaway Road - Three Rivers Road to .9 mile East	TA	8/8/2024	\$800,000
Jackson County	Walker Road - Rose Farm to Jackson Lee	TA	8/8/2024	\$408,377

#### MDOT allocations

Gautier	Martin Bluff Road - Roys Road to Little Bend Place	Sidewalks	7/22/2020	\$646,000
MGCCC	Harrison County Campus	Sidewalks	7/22/2020	\$244,356
MGCCC	Campus Pedestrian Connection Plaza	Ped	12/13/2021	\$305,446
Diberville	Lamey Bridge Road Middle School Pedestrian Improvements	Sidewalks	5/26/2022	\$402,570

*\*These projects are eligible for Special Match Credit if the LPA chooses to utilize*



# Mississippi Gulf Coast Metropolitan Planning Organization

## FY2025-2028 Transportation Improvement Program (TIP)

### Federal Transit Administration (FTA) Program of Projects (POP)

#### Coast Transit Authority FY2025 TIP

FY	Project	Fund Source	FTA	CTA	Total
2025	Operating Assistance For Period	Sec 5307	\$4,620,000	\$4,620,000	\$9,240,000
2025	Preventive Maintenance	Sec 5307, 5310	\$3,968,000	\$992,000	\$4,960,000
2025	Short Range Planning	Sec 5307	\$120,000	\$30,000	\$150,000
2025	Computer Equipment	Sec 5307	\$80,000	\$20,000	\$100,000
2025	Shop Equipment	Sec 5307	\$80,000	\$20,000	\$100,000
2025	ADA Operating Expense	Sec 5307	\$552,000	\$138,000	\$690,000
2025	Transit Enhancements	Sec 5307	\$96,000	\$24,000	\$120,000
2025	Purchase Office Equipment	Sec 5307	\$24,000	\$6,000	\$30,000
2025	Purchase Communication Equipment	Sec 5307	\$80,000	\$20,000	\$100,000
2025	Purchase Revenue Vehicles	Sec 5339 a/b/c	\$1,760,000	\$440,000	\$2,200,000
2025	Purchase Support Vehicles	Sec 5307, 5339a	\$184,000	\$46,000	\$230,000
2025	JARC Purchased Transportation	Sec 5307	\$400,000	\$0	\$400,000
2025	Mobility Manager	Sec 5307	\$64,000	\$16,000	\$80,000
2025	CTA-MHG Gulfport Intermodal Facility	RAISE	\$19,170,278	\$4,792,570	\$23,962,848
<b>Totals</b>			<b>\$31,198,278</b>	<b>\$11,164,570</b>	<b>\$42,362,848</b>



# Mississippi Gulf Coast Metropolitan Planning Organization

## FY2025-2028 Transportation Improvement Program (TIP)

### Federal Transit Administration (FTA) Program of Projects (POP)

#### Coast Transit Authority FY2026 TIP

FY	Project	Fund Source	FTA	CTA	Total
2026	Operating Assistance For Period	Sec 5307	\$4,850,000	\$4,850,000	\$9,700,000
2026	Preventive Maintenance	Sec 5307, 5310	\$4,160,000	\$1,040,000	\$5,200,000
2026	Short Range Planning	Sec 5307	\$160,000	\$40,000	\$200,000
2026	Computer Equipment	Sec 5307	\$80,000	\$20,000	\$100,000
2026	Shop Equipment	Sec 5307	\$80,000	\$20,000	\$100,000
2026	ADA Operating Expense	Sec 5307	\$580,000	\$145,000	\$725,000
2026	Transit Enhancements	Sec 5307	\$120,000	\$30,000	\$150,000
2026	Purchase Office Equipment	Sec 5307	\$32,000	\$8,000	\$40,000
2026	Purchase Communication Equipment	Sec 5307	\$80,000	\$20,000	\$100,000
2026	Purchase Revenue Vehicles	Sec 5339 a/b/c	\$1,840,000	\$460,000	\$2,300,000
2026	Purchase Support Vehicles	Sec 5307, 5339a	\$184,000	\$46,000	\$230,000
2026	JARC Purchased Transportation	Sec 5307	\$430,000	\$0	\$430,000
2026	Mobility Manager	Sec 5307	\$68,000	\$17,000	\$85,000
<b>Totals</b>			<b>\$12,664,000</b>	<b>\$6,696,000</b>	<b>\$19,360,000</b>



# Mississippi Gulf Coast Metropolitan Planning Organization

## FY2025-2028 Transportation Improvement Program (TIP)

### Federal Transit Administration (FTA) Program of Projects (POP)

#### Coast Transit Authority FY2027 TIP

FY	Project	Fund Source	FTA	CTA	Total
2027	Operating Assistance For Period	Sec 5307	\$5,050,000	\$5,050,000	\$10,100,000
2027	Preventive Maintenance	Sec 5307, 5310	\$4,320,000	\$1,080,000	\$5,400,000
2027	Short Range Planning	Sec 5307	\$160,000	\$40,000	\$200,000
2027	Computer Equipment	Sec 5307	\$80,000	\$20,000	\$100,000
2027	Shop Equipment	Sec 5307	\$80,000	\$20,000	\$100,000
2027	ADA Operating Expense	Sec 5307	\$608,000	\$152,000	\$760,000
2027	Transit Enhancements	Sec 5307	\$120,000	\$30,000	\$150,000
2027	Purchase Office Equipment	Sec 5307	\$40,000	\$10,000	\$50,000
2027	Purchase Communication Equipment	Sec 5307	\$80,000	\$20,000	\$100,000
2027	Purchase Revenue Vehicles	Sec 5339 a/b/c	\$1,840,000	\$460,000	\$2,300,000
2027	Purchase Support Vehicles	Sec 5339a	\$184,000	\$46,000	\$230,000
2027	JARC Purchased Transportation	Sec 5307	\$450,000	\$0	\$450,000
2027	Mobility Manager	Sec 5307	\$72,000	\$18,000	\$90,000
<b>Totals</b>			<b>\$13,084,000</b>	<b>\$6,946,000</b>	<b>\$20,030,000</b>



# Mississippi Gulf Coast Metropolitan Planning Organization

## FY2025-2028 Transportation Improvement Program (TIP)

### Federal Transit Administration (FTA) Program of Projects (POP)

#### Coast Transit Authority FY2028 TIP

FY	Project	Fund Source	FTA	CTA	Total
2028	Operating Assistance For Period	Sec 5307	\$5,300,000	\$5,300,000	\$10,600,000
2028	Preventive Maintenance	Sec 5307, 5310	\$4,480,000	\$1,120,000	\$5,600,000
2028	Short Range Planning	Sec 5307	\$160,000	\$40,000	\$200,000
2028	Computer Equipment	Sec 5307	\$80,000	\$20,000	\$100,000
2028	Shop Equipment	Sec 5307	\$80,000	\$20,000	\$100,000
2028	ADA Operating Expense	Sec 5307	\$640,000	\$160,000	\$800,000
2028	Transit Enhancements	Sec 5307	\$120,000	\$30,000	\$150,000
2028	Purchase Office Equipment	Sec 5307	\$40,000	\$10,000	\$50,000
2028	Purchase Communication Equipment	Sec 5307	\$80,000	\$20,000	\$100,000
2028	Purchase Revenue Vehicles	Sec 5339 a/b/c	\$1,840,000	\$460,000	\$2,300,000
2028	Purchase Support Vehicles	Sec 5339a	\$184,000	\$46,000	\$230,000
2028	JARC Purchased Transportation	Sec 5307	\$470,000	\$0	\$470,000
2028	Mobility Manager	Sec 5307	\$76,000	\$19,000	\$95,000
<b>Totals</b>			<b>\$13,550,000</b>	<b>\$7,245,000</b>	<b>\$20,795,000</b>



**FY2024-FY2027 Transportation Improvement Program Mid-Year Update**

Federal Highway Administration  
Eastern Federal Lands Highway Division

Last Printed: 6/3/2024

PROJECT	PROGRAM FISCAL YEAR	STATE	COUNTY	PARK, REFUGE, FOREST OR OTHER PARTNER/AGENCY	DESCRIPTION	TYPE OF WORK	PRIMARY FUND SOURCE	TOTAL PROGRAMMED AMOUNT	FUNDS FROM TITLE	DELIVERED BY	STATUS	CONGRESSIONAL DISTRICT	FLMA REGION
<b>Mississippi</b>													
MS CE OKDA BRG(1)	2025	MS	Lauderdale	Okatibbee Dam	Okatibbee Dam Bridge	BR	FLTP - USACE	\$360,000.00	Title 23	USACE	Planned	MS-03	USACE-SA
MS ERFO FW HILL 2020-1(1)	2024	MS	Holmes	Hillside National Wildlife Refuge	2020 MS FWS February Flooding	Misc	ERFO	\$2,455,831.00	Title 23	EFL	In Design	MS-02	FWS-2-SW
MS ERFO NPS VICK 2020-1(2)	2025	MS	Warren	Vicksburg National Military Park	2020 MS NPS February Flooding	LSR_3RH	ERFO	\$8,835,000.00	Title 23	EFL	In Design	MS-02	NPS-SER
MS FLAP 102	2024	MS	Stone	U.S. Forest Service - Desoto National Forest	West McHenry Road Bridge Replacement	BR	FLAP - EFL	\$1,617,500.00	Title 23	Local	Construction	MS-04	FS-08-South
MS FLAP 115	2025	MS	Wilkinson	Homochitto National Forest	SA 079-087 & SA 079-088	BR	FLAP - EFL	\$1,422,500.00	Title 23	State	In Design	MS-03	FS-08-South
MS FLAP 116	2024	MS	Lincoln	Homochitto National Forest	SA 043-223, Bridge, and Approaches	BR	FLAP - EFL	\$1,040,400.00	Title 23	State	Construction	MS-03	FS-08-South
MS FLAP 59	2025	MS	Smith	Blenville National Forest	Smith Co 330(10)B Bridge Replacement	BR	FLAP - EFL	\$390,000.00	Title 23	Local	In Design	MS-03	FS-08-South
MS FLAP 69	2025	MS	Adams	St. Catherine's Creek National Wildlife Refuge	Bourke Road Bridge Replacement	BR	FLAP - EFL	\$753,000.00	Title 23	Local	Planned	MS-06	FWS-4-SE
MS FLAP 85	2024	MS	Amite	Homochitto National Forest	EFLAP-SA03-134	BR	FLAP - EFL	\$3,790,000.00	Title 23	State	Construction	MS-03	FS-08-South
MS FLAP 94	2025	MS	Adams	St. Catherine's Creek National Wildlife Refuge	York Road Bridge	BR	FLAP - EFL	\$606,555.00	Title 23	Local	In Design	MS-03	FWS-4-SE
MS FLTP FW DCC(1)	2025	MS	Lee	Private John Allen National Fish Hatchery	Rehabilitate Routes 10, 901, and 902- Private John Allan National Fish Hatchery	3R	FLTP - FWS	\$1,989,750.00	Title 23	FWS	Planned	MS-01	FWS-4-SE
MS FLTP FW DHM(1)	2025	MS	Bolivar	Dahomey National Wildlife Refuge	Bear Road	3R	FLTP - FWS	\$260,911.88	Title 23	FWS	Planned	MS-02	FWS-4-SE
MS FLTP FW PNS(1)	2026	MS	Yazoo	Panther Swamp National Wildlife Refuge	Replace Wade Bayou Bridge	BR_New	FLTP - FWS	\$705,138.00	Title 23	FWS	Planned	MS-02	FWS-4-SE
MS NP GUI5 15(4)	2024	MS	Jackson	Gulf Islands National Seashore	Reconstruct 0.5 Miles of Park Road from McGhee Road to the Visitor Center	4R	FLTP - NPS	\$9,390,000.00	Title 23	EFL	Construction	MS-04	NPS-SER
MS NP NATR 3F26	2026	MS	Webster & Chicksaw	Natchez Trace Parkway	MS NP NATR 3F26	3R	FLTP - NPS	\$12,155,000.00	Title 23	EFL	In Design	MS-01	NPS-SER
MS NP NATR 3N18 3H27 ETC	2024	MS	Madison	Natchez Trace Parkway	MS NP NATR 3N18 3H27 ETC	4R	GAOA	\$40,000,000.00	Title 54	EFL	Construction	Various	NPS-SER
MS NP NATR 3N19 3H28	2024	MS	Madison	Natchez Trace Parkway	MS NP NATR 3N19 3H28	4R	GAOA	\$67,980,237.00	Title 54	EFL	Construction	Various	NPS-SER
MS NP NATR 3P27	2024	MS	Various	Natchez Trace Parkway	MS NP NATR 3P27	Trail	FLTP - NPS	\$2,400,000.00	Title 23	EFL	Construction	Various	NPS-SER
MS NP NATR 3P28	2024	MS	Madison	Natchez Trace Parkway	Reconstruct Parkway in Ridgeland MP 101-102.35	3R	FLTP - NPS	\$4,000,000.00	Title 23	EFL	Construction	MS-03	NPS-SER
MS NP NATR 3P29	2027	MS	Madison, Hinds	Natchez Trace Parkway	Reconstruct RI Parkway from MP86-927	3R	FLTP - NPS	\$15,574,000.00	Title 23	EFL	Planned	MS-02	NPS-SER
MS NP NATR 5570-463P	2025	MS	Williamson	Natchez Trace Parkway	Install Suicide Deterrent Barrier for TN Route 96 Bridge	Study	FLTP - NPS	\$6,800,000.00	Title 23	EFL	In Design	TN-07	NPS-SER

Approval signature is shown on first page packet only. The listing reflects all newly identified and programmed and/or modified projects as of May 31, 2024.



**FY2024-FY2027 Transportation Improvement Program Mid-Year Update**

Federal Highway Administration  
Eastern Federal Lands Highway Division

Last Printed: 6/3/2024

PROJECT	PROGRAM FISCAL YEAR	STATE	COUNTY	PARK, REFUGE, FOREST OR OTHER PARTNER/AGENCY	DESCRIPTION	TYPE OF WORK	PRIMARY FUND SOURCE	TOTAL PROGRAMMED AMOUNT	FUNDS FROM TITLE	DELIVERED BY	STATUS	CONGRESSIONAL DISTRICT	FLMA REGION
MS NP NATR BMS FY24(1)	2024	MS	Various	Natchez Trace Parkway	Bridge Preventative Maintenance Projects	BR1R	FLTP - NPS	\$550,000.00	Title 23	EFL	Construction	Various	NPS-SER
NP NATR 3Q9, 3P26, 3O23	2027	MS	Hinds and Madison	Natchez Trace Parkway	Reconstruct Parkway from MP 86.8 to MP 92.7 (Old)	4R	FLTP - NPS	\$15,574,000.00	Title 23	EFL	Planned	MS-03	NPS-SER
NP NATR BMS FY25(1)	2025	MS	Various	Natchez Trace Parkway	Repair Bridge Repair Bridges - NATR BMS FY25 IDIQ	BR	FLTP - NPS	\$500,000.00	Title 23	EFL	In Design	MS-01	NPS-SER
NP NATR BMS FY26(1)	2026	MS	Various	Natchez Trace Parkway	NATR Bridge Preventative Maintenance Projects FY26	BR	FLTP - NPS	\$500,000.00	Title 23	EFL	In Design	Various	NPS-SER
NP SER BMS FY26(1)	2026	MS	Various	Southeast Regional Office	SER Bridge Preventative Maintenance Projects in FY26	BR	FLTP - NPS	\$500,000.00	Title 23	EFL	In Design	Various	NPS-SER





**MISSISSIPPI DEPARTMENT OF TRANSPORTATION  
2025 - 2028 STATEWIDE TRANSPORTATION IMPROVEMENT PROGRAM  
GULF COAST URBANIZED AREA GROUPED PROJECTS**

**Bridge Replacement**

Fiscal Year	Agency	Fund Source	Federal Share	State Share	Total Funds
2025	MDOT/LPA	State/Local/Eligible Federal Funds	\$16,000,000	\$4,000,000	\$20,000,000
2026	MDOT/LPA	State/Local/Eligible Federal Funds	\$38,800,000	\$9,700,000	\$48,500,000
2027	MDOT/LPA	State/Local/Eligible Federal Funds	\$38,800,000	\$9,700,000	\$48,500,000
2028	MDOT/LPA	State/Local/Eligible Federal Funds	\$38,800,000	\$9,700,000	\$48,500,000
<b>SUB-TOTAL FOR Bridge Replacement :</b>			<b>\$132,400,000</b>	<b>\$33,100,000</b>	<b>\$165,500,000</b>

**Operation/Maintenance/Minor Reconstruction**

Fiscal Year	Agency	Fund Source	Federal Share	State Share	Total Funds
2025	MDOT/LPA	State/Local/Eligible Federal Funds	\$40,000,000	\$10,000,000	\$50,000,000
2026	MDOT/LPA	State/Local/Eligible Federal Funds	\$7,200,000	\$1,800,000	\$9,000,000
2027	MDOT/LPA	State/Local/Eligible Federal Funds	\$7,200,000	\$1,800,000	\$9,000,000
2028	MDOT/LPA	State/Local/Eligible Federal Funds	\$7,200,000	\$1,800,000	\$9,000,000
<b>SUB-TOTAL FOR Operation/Maintenance/Minor Reconstruction :</b>			<b>\$61,600,000</b>	<b>\$15,400,000</b>	<b>\$77,000,000</b>

**Safety**

Fiscal Year	Agency	Fund Source	Federal Share	State Share	Total Funds
2025	MDOT/LPA	State/Local/Eligible Federal Funds	\$1,000,000	\$111,111	\$1,111,111
2026	MDOT/LPA	State/Local/Eligible Federal Funds	\$1,000,000	\$111,111	\$1,111,111
2027	MDOT/LPA	State/Local/Eligible Federal Funds	\$1,000,000	\$111,111	\$1,111,111
2028	MDOT/LPA	State/Local/Eligible Federal Funds	\$1,000,000	\$111,111	\$1,111,111
<b>SUB-TOTAL FOR Safety :</b>			<b>\$4,000,000</b>	<b>\$444,444</b>	<b>\$4,444,444</b>

**TAP/TE/Recreational Trails/SRTS/Scenic Byways**

Fiscal Year	Agency	Fund Source	Federal Share	State Share	Total Funds
2025	MDOT/LPA	State/Local/Eligible Federal Funds	\$1,000,000	\$250,000	\$1,250,000
2026	MDOT/LPA	State/Local/Eligible Federal Funds	\$1,000,000	\$250,000	\$1,250,000
2027	MDOT/LPA	State/Local/Eligible Federal Funds	\$1,000,000	\$250,000	\$1,250,000
2028	MDOT/LPA	State/Local/Eligible Federal Funds	\$1,000,000	\$250,000	\$1,250,000
<b>SUB-TOTAL FOR TAP/TE/Recreational Trails/SRTS/Scenic Byways :</b>			<b>\$4,000,000</b>	<b>\$1,000,000</b>	<b>\$5,000,000</b>
<b>Grand Total :</b>			<b>\$202,000,000</b>	<b>\$49,944,444</b>	<b>\$251,944,444</b>

The projects contained in this "Grouped" list are not individually listed in the STIP. These projects individually or cumulatively have no significant environmental impact and therefore are deemed Categorical Exclusions. Additional grouped projects may be found in other volumes of the STIP. The fund source column above represents every FHWA Apportioned and Allocated funds, and /or non-federal funds.



**MISSISSIPPI DEPARTMENT OF TRANSPORTATION  
2025 - 2028 STATEWIDE TRANSPORTATION IMPROVEMENT PROGRAM  
MDOT ALL STIP PROJECTS**

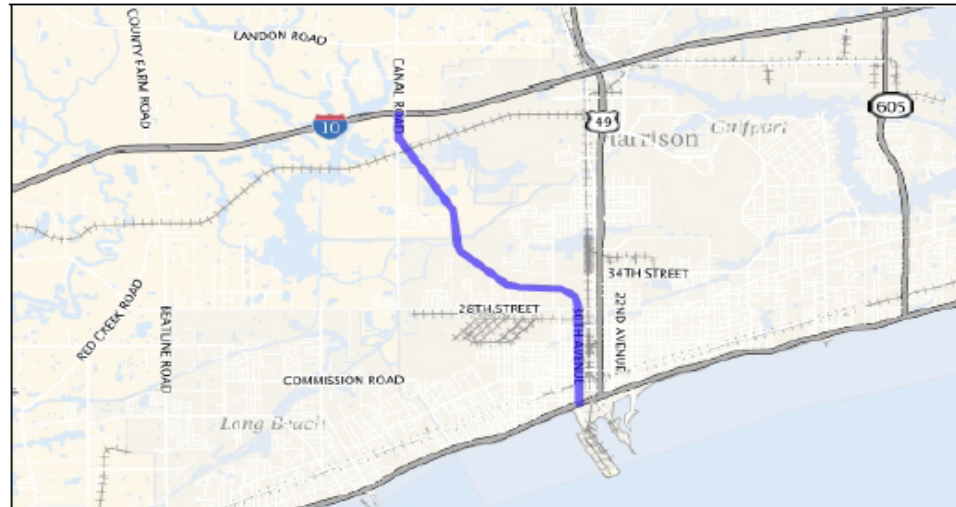
**County: Harrison**

**STIP ID: 240200**      **Project Title:** SR 601/CANAL ROAD HARRISON COUNTY - DEBT SERVICE      **Total Project Cost:** \$130,000,000

**Route:** MS 601/CANAL ROAD      **Project Length:** 5 Miles      **Fund Source:** STBG/NHPP/BOND/SFP

Project #	FY	Scope of Work	Resp Agcy	Phase	Fed	State/Local	Total Cost Est
501561/602000	2025	Grade Drain Bridge Pave	MDOT	OTH/AC	\$6,641,600	\$1,660,400	\$8,302,000
<b>Termini:</b> SR 601 (CANAL RD) BT PORT/I-10							
501561/602002	2025	Grade Drain Bridge Pave	MDOT	OTH/AC	\$2,168,664	\$542,166	\$2,710,830
<b>Termini:</b> H.E.L.P. Projects - Debt Service Harrison (B)							
501561/602000	2026	Grade Drain Bridge Pave	MDOT	OTH/AC	\$6,704,800	\$1,676,200	\$8,381,000
<b>Termini:</b> SR 601 (CANAL RD) BT PORT/I-10							
501561/602002	2026	Grade Drain Bridge Pave	MDOT	OTH/AC	\$2,168,664	\$542,166	\$2,710,830
<b>Termini:</b> H.E.L.P. Projects - Debt Service Harrison (B)							
501561/602002	2027	Grade Drain Bridge Pave	MDOT	OTH/AC	\$2,168,664	\$542,166	\$2,710,830
<b>Termini:</b> H.E.L.P. Projects - Debt Service Harrison (B)							
501561/602002	2028	Grade Drain Bridge Pave	MDOT	OTH/AC	\$2,168,664	\$542,166	\$2,710,830
<b>Termini:</b> H.E.L.P. Projects - Debt Service Harrison (B)							
<b>SUB-TOTAL FOR STIP ID 240200 :</b>					<b>\$22,021,056</b>	<b>\$5,505,264</b>	<b>\$27,526,320</b>

This project details the repayment of debt service on a \$102,000,000 HELP bond issue for the construction of Canal Road. This project uses Advance Construction. See the explanation in the Introduction for a description of this funding technique.





**MISSISSIPPI DEPARTMENT OF TRANSPORTATION  
2025 - 2028 STATEWIDE TRANSPORTATION IMPROVEMENT PROGRAM  
MDOT ALL STIP PROJECTS**

**County: Jackson**

**STIP ID: 300082**    **Project Title:** US 90 from SR 609 to DOLPHIN DRIVE    **Total Project Cost:** \$200,000,000  
**Route:** US 90 from SR 609 to DOLPHIN DRIVE    **Project Length:** Miles    **Fund Source:** Discretionary/Earmark/SFP/STBG/NHPP

Project #	FY	Scope of Work	Resp Agcy	Phase	Fed	State/Local	Total Cost Est
106325/301000	2025	Add 2 Lanes	MDOT	CON	\$3,100,000	\$156,900,000	\$160,000,000
<b>Termini:</b> US 90 from SR 609 to Dolphin Drive							
106325/302000	2025	Add 2 Lanes	MDOT	CON	\$12,000,000	\$3,000,000	\$15,000,000
<b>Termini:</b> US 90 from SR 609 to Dolphin Drive - PED Path							
<b>SUB-TOTAL FOR STIP ID 300082 :</b>					<b>\$15,100,000</b>	<b>\$159,900,000</b>	<b>\$175,000,000</b>



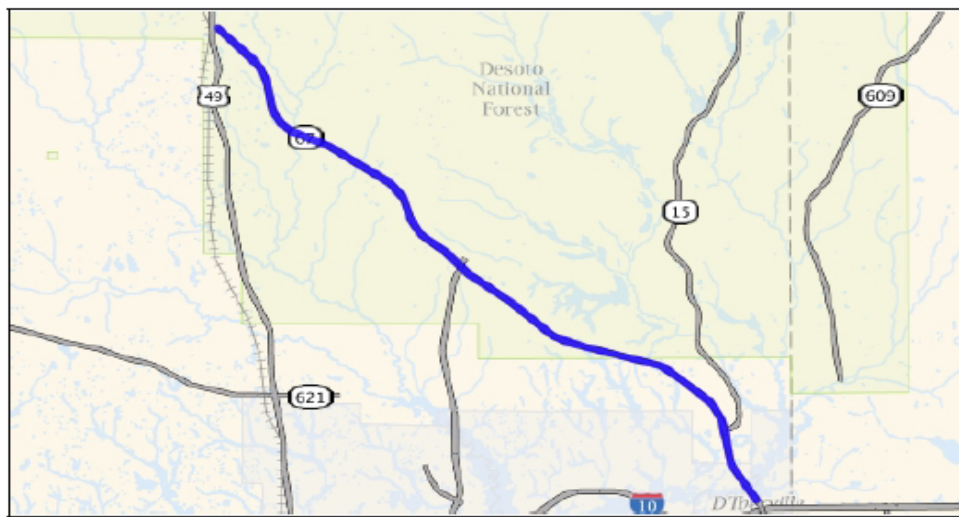


**MISSISSIPPI DEPARTMENT OF TRANSPORTATION  
2025 - 2028 STATEWIDE TRANSPORTATION IMPROVEMENT PROGRAM  
ALL STIP PROJECTS FOR GULF COAST MPO**

**County: Harrison**

**STIP ID: 450706**      **Project Title:** SR 67 Superstreet      **Total Project Cost:** \$92,000,000  
**Route:** SR 67      **Project Length:** Miles      **Fund Source:** Discretionary, Earmark, STBG, NHPP, HSP, State

Project #	FY	Scope of Work	Resp Agcy	Phase	Fed	State/Local	Total Cost Est
108634/301000	2025	Safety	MDOT	CON	\$13,500,000	\$1,500,000	\$15,000,000
<b>Termini:</b> MS 67 from US 49 to I-10 "Superstreets" corridor. RCUTs at crossovers and Signalized RCUT(at existing traffic signals)							
108634/301100	2025	Safety	MDOT	CON	\$61,600,000	\$15,400,000	\$77,000,000
<b>Termini:</b> MS 67 from US 49 to I-10 "Superstreets" corridor. RCUTs at crossovers and Signalized RCUT(at existing traffic signals)							
<b>SUB-TOTAL FOR STIP ID 450706 :</b>					<b>\$75,100,000</b>	<b>\$16,900,000</b>	<b>\$92,000,000</b>





**Gulf Coast Metropolitan Planning Organization (MPO)  
Resolution approving the  
FY 2025 – FY 2028 Transportation Improvement Program (TIP)**

**Whereas** the Gulf Regional Planning Commission (GRPC) is the designated Metropolitan Planning Organization (MPO) for the Gulfport, MS and Pascagoula, MS urbanized areas;

**Whereas** as required by 23 CFR 450.326, the MPO in cooperation with the State and affected public transportation operator, developed a TIP for the metropolitan planning area. The TIP reflects the investment priorities established in the current metropolitan transportation plan and covers a period of four years.

**Whereas** the MPO provided all interested parties with a reasonable opportunity to comment on the proposed TIP as required by 450.316(a). The MPO provided three formal public meetings during the TIP development process. In addition, the MPO made the TIP readily available for public review in electronic format at [www.grpc.com](http://www.grpc.com).

**Whereas** GRPC carried out a poll vote of the MPO requesting approval of the FY 2025 – FY 2028 TIP; and now, therefore, be it

**Resolved**, that on August 13, 2024, the Gulf Coast Metropolitan Planning Organization approved the FY 2025 – FY 2028 TIP.

  
\_\_\_\_\_  
Mayor Billy Hewes, City of Gulfport  
MPO Chairman