

UNIFIED PLANNING WORK PROGRAM FOR THE
MISSISSIPPI GULF COAST METROPOLITAN PLANNING ORGANIZATION

FY 2025 – 2026

October 1, 2024 to September 30, 2025

Prepared by the
GULF REGIONAL PLANNING COMMISSION
August 2024

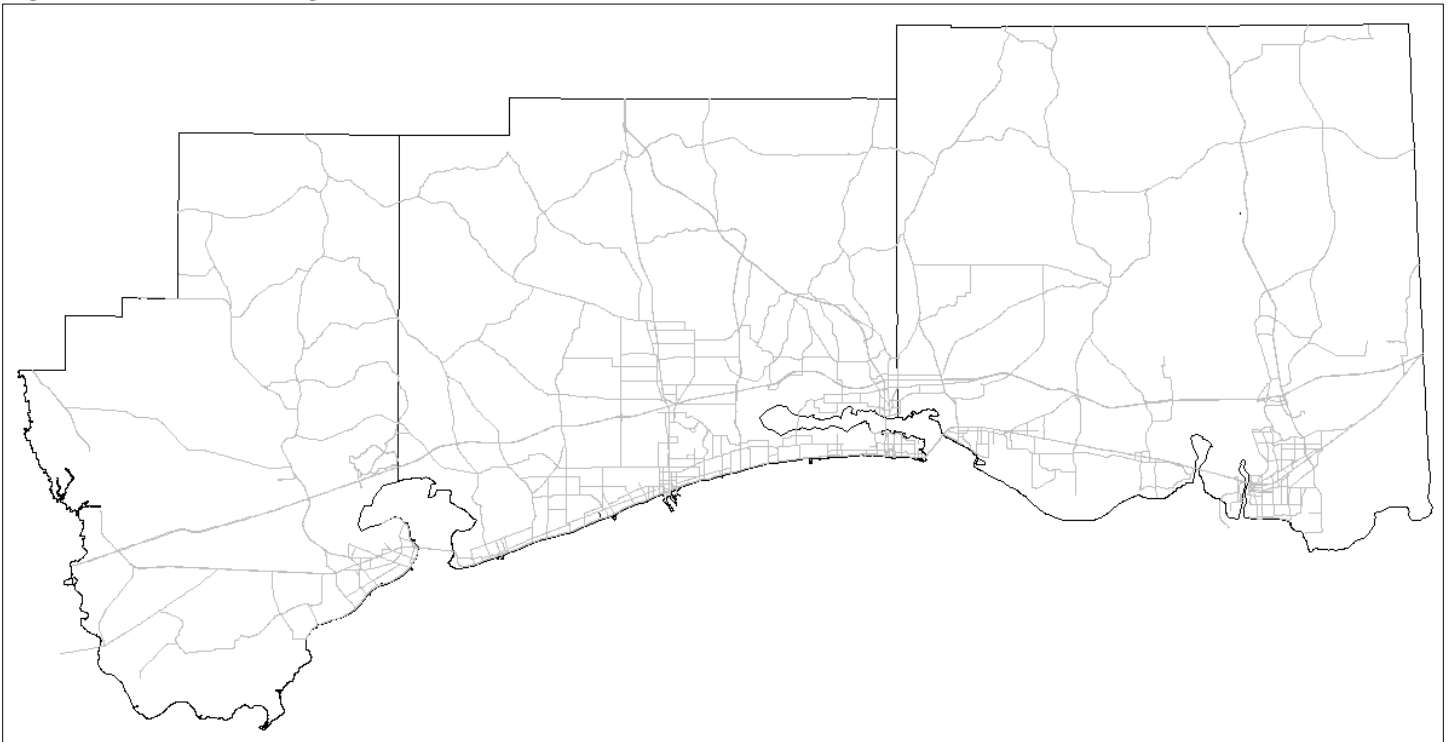
Adopted by the Mississippi Gulf Coast Metropolitan Planning Organization on

Introduction

The Governor of Mississippi designated Gulf Regional Planning Commission (GRPC) as the Mississippi Gulf Coast MPO on December 20, 1973. GRPC serves as administrative and planning staff for the Mississippi Gulf Coast Metropolitan Planning Organization. GRPC performs the principal planning and programming functions of the MPO under the direction of a Transportation Policy Committee (TPC) advised by a Technical Coordinating Committee (TCC). The TPC, as the designated policy-making body of the MPO, holds the ultimate responsibility for making decisions regarding the regional transportation system in accordance with federal legislation (23 USC 134(b) and 49 USC 5303(c)). The TCC provides technical input to the decision-making process.

The Mississippi Gulf Coast Planning Area encompasses three counties in, which are located 12 municipalities: Waveland, Bay Saint Louis, and Diamondhead in Hancock County; Pass Christian, Long Beach, Gulfport, Biloxi, and D'Iberville in Harrison County; and Ocean Springs, Gautier, Pascagoula, and Moss Point in Jackson County. There are actually two distinct urbanized areas within the planning area: the Gulfport Urbanized Area (UZA), which stretches from Bay Saint Louis to Ocean Springs and includes portions of all three coastal counties, and the Pascagoula UZA, located in the eastern half of Jackson County.

Figure 1: MPO Planning Area



UPWP

The UPWP lists the transportation studies and tasks that MPO staff and consultants will perform to support the metropolitan transportation planning process. It must identify each project's funding source, the activities' schedule, and the agency or agencies responsible for each task or study. MPO staff facilitates the collaboration of governments, interested parties, and residents to elicit the Region's vision for transportation using data and planning methods described in the Unified Planning Work Program (UPWP) to generate and evaluate alternatives, policies, and processes in providing direction for the allocation of limited resources.

Changes to the UPWP can be made as needed. However, the following types of amendments require federal approval: An increase in federal funds, cumulative transfer among already approved work program line items greater than 10% of the total federal funds or \$100,000 (whichever is greater), change in scope or objectives of activities, the extension of the time period of the approved work program, transfer of substantive program work to a third party, and capital expenditures, including the purchase of equipment.

MPO PRIORITIES

MPO staff facilitates the production of planning products that include analyses, studies, and other documented information to provide direction for the allocation of limited resources. MPO planning programs, studies, policies, and collaboration activities presented in the UPWP are used to generate lists of priority projects for roughly mirroring transportation funding sources, including regionally significant projects, local federal-aid projects, safety projects, congestion management projects, bicycle and pedestrian projects, and transit/demand management projects.

Guide/Support Transportation Decision Making - The MPO guides transportation decision-making by performing the planning and public administrative work necessary to develop and maintain the Region's long-range plans, short-range plans, and Transportation Improvement Program (TIP). GRPC will maintain its certification as the MPO to ensure that the Region is eligible to apply and receive federal transportation dollars. The MPO will continue to carry out metropolitan transportation planning in cooperation with the State and with operators of publicly owned transit services.

Facilitation, Education & Outreach - The MPO uses various techniques to engage the public and other affected people in the MPO planning process by actively reaching out to the public to create new channels of communication that will make the transportation system more responsive to the users' needs. The MPO also educates stakeholders and promotes innovative measures to enhance the safety of the transportation system through tasks described in this document.

Project Development/Delivery - MPO staff uses planning tasks identified in the UPWP to monitor transportation conditions, leading to the identification and development of transportation projects that specifically address MPO objectives. The MPO has become a steward of project readiness by working closely with the LPAs to maintain the project development schedule.

MPO GUIDANCE

Congress passes a new Transportation Bill approximately every four to six years. Planning factors may change as new bills are passed. The current Transportation Bill is the *Infrastructure Investment and Jobs Act (IIJA)*, which was signed into law by the president on November 15, 2021.

The new bill continues most of the standards and regulations from the previous bill, Fixing America's Surface Transportation Act (FAST). However, the IIJA, which is a portion of the Bipartisan Infrastructure Law (BIL), features new guidance for transportation planning prepared by the U.S. Department of Transportation for all MPOs. This guidance includes the new Planning Emphasis Areas, which will determine the scheduled work tasks for the GRPC's 2023-2024 Unified Planning Work Program (UPWP).

THE PLANNING EMPHASIS AREAS

Tackling the Climate Crisis-Transition to Clean Energy

MPOs and public transportation providers are following the national goal of reducing greenhouse gas emissions to 50-52% below the 2005 levels by 2030. The emissions reduction strategies include accelerating the transition towards electric and other alternative fuels and increasing access to public transportation and non-motorized transportation.

Equity and Justice⁴⁰ in Transportation Planning

MPOs and public transportation providers will work to advance racial equity and support for underserved and disadvantaged communities (Executive Order 13985) by utilizing the following strategies: Improve infrastructure for non-motorized travel and increase public transportation in underserved communities; Plan for the safety of all road users, particularly for those on arterials. Target demand-response transportation services towards communities with higher concentrations of older adults and those with poor access to essential services. Include linking affordable housing and environmental justice communities when planning transit-oriented development.

Complete Streets

MPOs and public transportation providers will work to include provisions for safety in future transportation infrastructure, particularly for those who are using the road outside of automobiles. Complete Streets is the description of the new national inclusive standard for road safety. A complete street is safe and feels safe for everyone using the street. Federally-funded transportation operations and planning should prioritize safety and access to the network for travelers of all ages and abilities.

Public Involvement

MPOs and public transportation providers will work to integrate Virtual Public Involvement (VPI) tools into the overall public involvement approach while ensuring continued public participation by individuals without access to computers and mobile devices.

Strategic Highway Network (STRAHNET)/U.S. Department of Defense (DOD) Coordination

MPOs and public transportation providers will work to coordinate with representatives from the DOD in the transportation planning process and the project programming process on infrastructure and connectivity needs for STRAHNET routes and other public roads that connect to DOD facilities [23 U.S.C. 101 (b)(1)].

Federal Land Management Agency (FLMA) Coordination

MPOs and public transportation providers will work to coordinate with FLMA representatives in the transportation planning process and the project programming process on infrastructure for access routes and transportation services that connect to Federal Lands.

Planning and Environment Linkages (PEL)

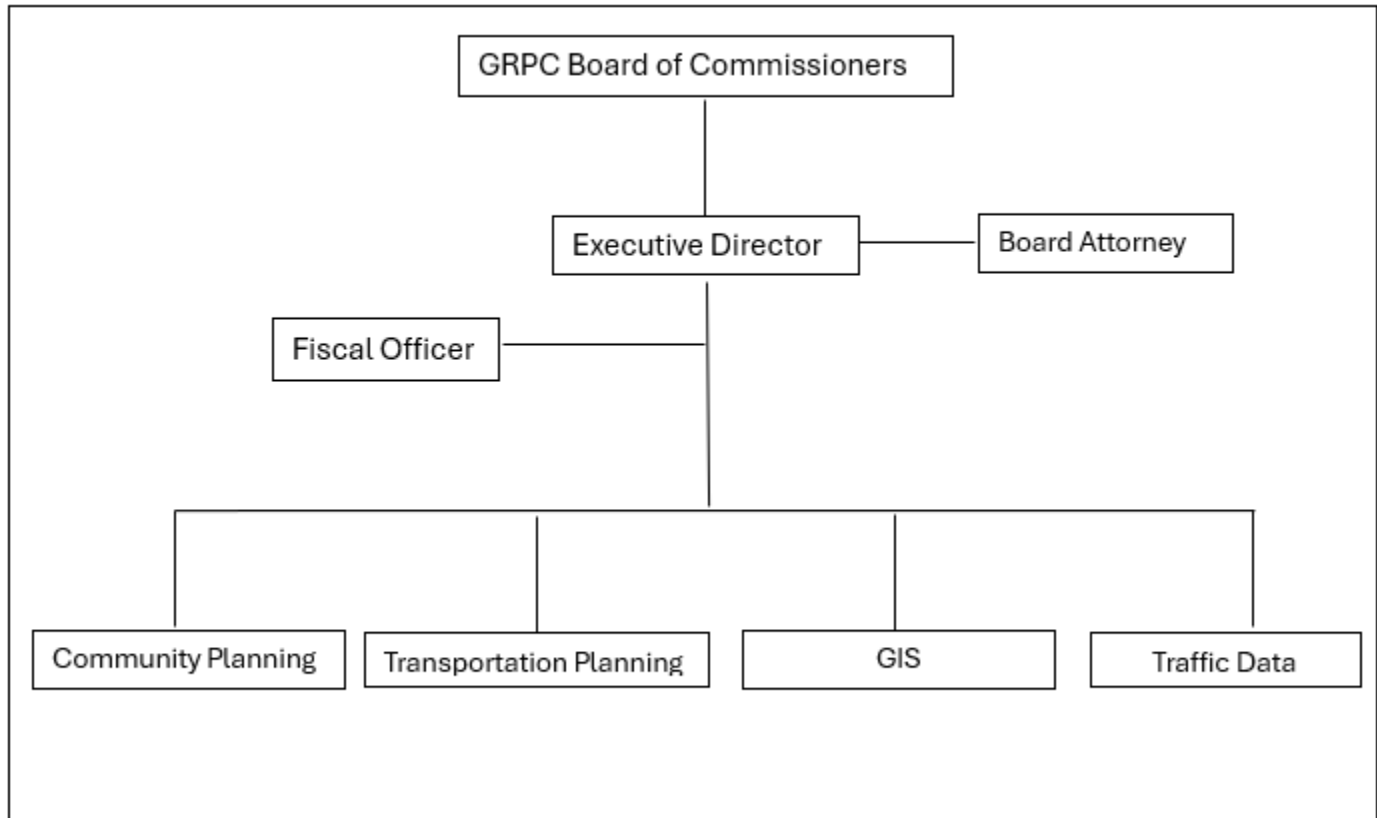
MPOs will implement the Planning and Environment Linkages (PEL) process for transportation planning projects of significant complexity to improve project delivery timeframes.

Data in Transportation Planning

MPOs and public transportation providers will work to incorporate data sharing and data management considerations into the transportation planning process. Data sharing principles and data management will be used for a variety of concerns, such as freight planning, bike and pedestrian planning, equity analyses, safety performance measurements, and travel time reliability.

ORGANIZATIONAL CHART

GRPC – August 2024



FINANCIAL SUMMARY

In accordance with 23 U.S.C. 104 generally, Metropolitan Planning funds are made available from FHWA and FTA through the Consolidated Planning Grant Agreement to each Metropolitan Planning Organization (MPO) designated for an urbanized area with a population of more than 50,000 individuals and responsible for carrying out the 3-C Metropolitan Planning Process.

Metropolitan Planning (PL) Funds

Metropolitan Planning funds aim to carry out the requirements of 23 U.S.C. 134 and provide for a continuing, comprehensive, and cooperative (3-C) Metropolitan Transportation Planning process. As required by 23 CFR 450.308(b), the MPO shall document planning activities in a Unified Planning Work Program (UPWP). Funds are apportioned annually to MDOT according to a statutory formula. MDOT makes funds available to the MPOs in the State based on an approved distribution formula.

State Planning and Research (SP&R)

The State Planning and Research Program funds statewide planning and research activities. The funds are used to establish a cooperative, continuous, and comprehensive framework for making transportation investment decisions and to carry out transportation research activities throughout the State. Funding is provided for SP&R by a 2% set aside from each State's apportionments of four programs: The National Highway Performance Program (NHPP), the Surface Transportation Program (STP), the Highway Safety Improvement Program (HSIP), and the Congestion Mitigation Air Quality Improvement Program (CMAQ) Program. The MPO uses these funds for its traffic count program.

Metropolitan Planning Program (MPP)

MPP (Section 5305) or FTA-flex funds are a significant source of Federal financial assistance to help urbanized areas (UZAs) plan for the development, improvement, and effective management of their multimodal transportation systems. MPP funds are available to carry out the metropolitan transportation planning process and meet the transportation planning requirements of the joint Federal Transit Administration (FTA)/Federal Highway Administration (FHWA) planning regulations. In general, MPP grants are available to assist States, Metropolitan Planning Organizations (MPOs), and local governmental authorities with preparing transportation plans and programs; planning, engineering, designing, and evaluating a public transportation project; and conducting technical studies related to public transportation. FTA distributes these funds to the states based on urbanized area populations. These funds, in turn, are sub-allocated by states to MPOs by a formula that considers each MPO's urbanized area population, their individual planning needs, and a minimum distribution.

Increasing Safe and Accessible Transportation Options (PL-SATO)

The non-Federal match is waived PL-SATO funds for Complete Streets planning activities to assist the MPO in their Unified Planning Work Programs (UPWPs) an activit[ies] “to increase safe and accessible options for multiple travel modes for people of all ages and abilities” such as:

- (1) Adoption of Complete Streets standards or policies;
- (2) Development of a Complete Streets prioritization plan that identifies a specific list of Complete Streets projects to improve the safety, mobility, or accessibility of a street;
- (3) Development of transportation plans to...
 - (A) Create a network of active transportation facilities, including sidewalks, bikeways, or pedestrian and bicycle trails, to connect neighborhoods with destinations such as workplaces, schools, residences, businesses, recreation areas, healthcare and childcare services, or other community activity centers;
 - (B) Integrate active transportation facilities with public transportation service or improve access to public transportation;
 - (C) Create multiuse active transportation infrastructure facilities (including bikeways or pedestrian and bicycle trails) that make connections within or between communities;
 - (D) Increase public transportation ridership; and
 - (E) Improve the safety of bicyclists and pedestrians.
- (4) Regional and megaregional planning (i.e., multi-jurisdictional transportation planning that extends beyond MPO and/or State boundaries) that address travel demand and capacity constraints through alternatives to new highway capacity, including through intercity passenger rail and
- (5) Development of transportation plans and policies that support transit-oriented development.

109639-101000 PL

109639-102000 Flex

109639-103000 PL-SATO

2025 – 2026 ANTICIPATED REVENUE

Item	PL	Local	Total PL
Carryover	\$1,252,480	\$313,120	\$1,565,600
FY 2025	\$792,528	\$198,132	\$990,660
FY 2026	\$808,378	\$202,094	\$1,010,472
Total	\$2,853,386	\$713,346	\$3,566,732

Item	FTA	MDOT	Total FTA
Carryover	\$478,585	\$119,647	\$598,232
FY 2025	\$280,708	\$70,177	\$350,885
FY 2026	\$286,322	\$71,581	\$357,903
Total	\$1,045,615	\$261,404	\$1,307,019

Item	PL-SATO	Local	Total SATO
Carryover	\$25,364	\$0	\$25,364
FY 2025	\$19,893	\$0	\$19,893
FY 2026	\$20,291	\$0	\$20,291
Total	\$65,548	\$0	\$65,548

Item	SPR	MDOT	Total SPR
FY 2025	\$120,000	\$30,000	\$150,000
FY 2026	\$120,000	\$30,000	\$150,000
Total	\$240,000	\$60,000	\$300,000

2023 – 2024 ANTICIPATED EXPENDITURES

Task	PL	Local	PL TOTAL	FTA-flex	MDOT	FTA TOTAL	PL-SATO	Local	PL-SATO TOTAL
A-1	\$172,343	\$43,086	\$215,429	\$172,343	\$43,086	\$215,429	\$0	\$0	\$0
A-2	\$56,066	\$14,017	\$70,083	\$56,066	\$14,017	\$70,083	\$0	\$0	\$0
A-3	\$64,247	\$16,062	\$80,309	\$64,247	\$16,062	\$80,309	\$0	\$0	\$0
B-1	\$178,358	\$44,589	\$222,947	\$0	\$0	\$0	\$0	\$0	\$0
B-2	\$0	\$0	\$0	\$293,674	\$73,418	\$367,092	\$0	\$0	\$0
C-1	\$48,104	\$12,026	\$60,130	\$48,104	\$12,026	\$60,130	\$0	\$0	\$0
E-1	\$2,334,267	\$583,567	\$2,917,834	\$411,181	\$102,795	\$513,976	\$0	\$0	\$0
E-2	\$0	\$0	\$0	\$0	\$0	\$0	\$65,548	\$0	\$65,548
TOTAL	\$2,853,386	\$713,346	\$3,566,732	\$1,045,615	\$261,404	\$1,307,019	\$65,548	\$0	\$65,548

Task		SPR funds	MDOT match	SPR TOTAL
D-1	Traffic Counting Program	\$240,000	\$60,000	\$300,000

*Projected revenue estimates were provided by MDOT for the UPWP. PL funds and FTA flex funding used for planning activities described in the UPWP are sub-allocated to each task based on the staff working on that task.

WORK PROGRAM TASKS

A.1 MPO ADMINISTRATION

A.2 TRANSPORTATION IMPROVEMENT PROGRAM

A.3 PROJECT ADMINISTRATION

B.1 MPO PLANNING

B.2 TRANSIT PLANNING PROGRAM

C.1 PLANNING TOOLS AND DATA DEVELOPMENT

D.1 TRAFFIC DATA COLLECTION PROGRAM

E.1 SPECIAL PROJECTS, SUPPORT, AND DEVELOPMENT

A.1 MPO ADMINISTRATION

Responsible Party and Contact Information:

Name/Title: Kenneth Yarrow, Executive Director
Telephone Number: 228-864-1167
Email: kyarrow@grpc.com

Purpose and Scope:

This task includes the management of a regional decision-making body called the Transportation Policy Committee (TPC). The TPC comprises executive officials from the 15 Gulf Coast jurisdictions, ports, and Coast Transit Authority. The completion of activities in the Unified Planning Work Program (UPWP), transportation planning process, providing opportunities for involvement in transportation planning programs and processes, and administrative/operational activities required to function as an MPO are performed here.

Accomplishments during the Previous Work Program Period:

MPO newsletters, MPO meetings, conferences.

Planned Activities for this Work Program:

1. Program administration. Manage the day-to-day activities of the MPO, ensuring proper staffing, technical resources, and office infrastructure are available to complete activities identified in the UPWP. Maintain continued federal and State transportation aid eligibility by maintaining a certified “3-C” urban transportation planning process. Maintain MPO designations and mailing lists for each MPO member.
 2. Professional development. Staff will participate in workshops, meetings, training, education, and webinars to develop new skills and expertise in transportation planning. In-state and out-of-state travel may be required.
 3. Unified Planning Work Program (UPWP). Staff will maintain the MPO’s UPWP and prepare reports about MPO activities for the GRPC Board and MDOT.
 4. MPO meetings. GRPC will host Technical Coordinating Committee (TCC) and Transportation Policy Committee (TPC) meetings. Staff will prepare presentations, agendas, and minutes for meetings. Staff will represent the MPO in State, regional, and local meetings. Staff will participate in discussions with MPO collaborators, including but not limited to MDOT, FHWA, FTA, and the LPAs.
 5. Community meetings. GRPC staff represents the MPO at various meetings in the Region. Meetings may include County Board meetings, City Council meetings, project meetings, and collaboration meetings.
 6. Public participation. (Planning Emphasis Area: Public Involvement) This task implements the MPO’s Public Participation Plan (PPP). Provide outreach and review opportunities for updates and amendments to MPO documents. Review the effectiveness of the procedures and strategies in the participation plan to ensure a complete and open participation process.
-

7. MPO newsletter. (Planning Emphasis Area: Public Involvement) GRPC will maintain communication with MPO members, stakeholders, and the general public. The newsletter will be sent out to email lists. GRPC will build and maintain email lists to improve our communication about GRPC planning activities, funding announcements, and program review opportunities. The newsletter will link to the website for more information on the subject.
8. Social media. (Planning Emphasis Area: Public Involvement) Maintain social media accounts and the GRPC website to share and discuss current events related to transportation. Format planning documents, develop website information, develop other printed materials, and facilitate public meetings as needed.
9. Environmental Justice and Title VI Program. (Planning Emphasis Area: Equity and Justice40). Staff will monitor, evaluate, and implement Title VI and Environmental Justice compliance, guidance, and requirements for plans and programs. Targeted outreach to disadvantaged communities will be used to solicit input on plans and programs.
 - GRPC staff will conduct an Equity Impact Analysis to examine the amount of transportation funding resources invested in disadvantaged communities. The effort will ensure equity in accordance with the Justice40 standards.
 - GRPC will develop new transportation advisory groups with an emphasis on the recruitment of group members whose demographics include diversity in income level, race, age, and preferred mode of transportation.
10. Department of Defense coordination: (Strategic Highway Network (STRAHNET)) GRPC will coordinate with representatives from Keesler Air Force Base and Naval Construction Battalion Center in the transportation planning and project programming process on infrastructure and connectivity needs.

Deliverables: UPWP, MDOT quarterly reports, GRPC Board reports, MPO meeting minutes, MPO newsletter

Projected Cost:

Task	PL funds	Local match	PL TOTAL	FTA-flex	MDOT match	FTA TOTAL
A-1	\$172,343	\$43,086	\$215,429	\$172,343	\$43,086	\$215,429

A.2 TRANSPORTATION IMPROVEMENT PROGRAM

Responsible Party and Contact Information:

Name/Title: Kenneth Yarrow, Executive Director
Telephone Number: 228-864-1167
Email: kyarow@grpc.com

Purpose and Scope:

GRPC works with local public agencies (LPAs) of all modes to update the TIP. The MPO coordinates with FHWA, MDOT, and local LPAs to keep the TIP updated with current project timelines, project descriptions, and funding allocations. GRPC performs TIP modifications, amendments, and updates as needed.

Accomplishments during the Previous Work Program Period:

2022 Call for Projects process, 2025-2028 TIP development, TIP prioritization process, and policy update.

Planned Activities for this Work Program:

1. TIP document. (Planning Emphasis Area: FLMA Coordination) Staff develops the TIP document, manage TIP updates, amendments, and modifications. Work with transit agencies to build the transit Program of Projects (POP). Manage funding balances and obligation authority.
2. TIP project tracking. Communicate with the Gulf Coast Local Public Agencies and host project meetings to gather information required to track project status and reduce project delivery delays. Attend TIP project kickoff meetings, field reviews, and office reviews to represent MPO interests.
3. 2026 call for projects. Staff will work with the MPO to develop an investment strategy for the Gulf Coast MPO STBG and TAP funds. A TIP call for projects will be administered by GRPC. Staff will update the TIP investment strategy and evaluation process for the proposed TIP projects.
4. Public outreach. (Planning Emphasis Area: Public Involvement/Equity and Justice40) Staff will perform public review periods, public meetings, and other outreach for TIP review. Targeted outreach to identify potential impacts from transportation projects to low-income and minority areas will provide specific opportunities for comment.
5. List of obligated projects. Staff will work with MDOT to manage a list of obligated projects and make it available to the public and stakeholders on the GRPC website.

Deliverables

TIP document, prioritization process, investment strategy, list of obligated projects

Projected Cost

Task	PL funds	Local match	PL TOTAL	FTA-flex	MDOT match	FTA TOTAL
A-2	\$56,066	\$14,017	\$70,083	\$56,066	\$14,017	\$70,083

A.3 PROJECT ADMINISTRATION

Responsible Party and Contact Information:

Name/Title: Jeff Loftus, Community Planning Manager
Telephone Number: 228-864-1167
Email: jol@grpc.com

Purpose and Scope:

Provide contract administration services to GRPC and local LPA projects.

Accomplishments during the Previous Work Program Period:

GRPC administered contracts and served as LPA for the Port of Gulfport for signal timing study.

Planned Activities for this Work Program:

1. Contract administration. Provide contract administration and status updates for GRPC studies. Provide oversight for the procurement process to select consultants for GRPC lead projects.
2. GRPC as LPA. GRPC will serve as LPA For regional projects and studies as needed. Staff will maintain certification for the MDOT's Local Public Agency (LPA) process.
3. Project liaison. GRPC will assist local public agencies with TIP projects. Staff will work to help local agencies overcome project hurdles, and GRPC will assist LPAs in activating projects.
4. Grant writing. GRPC will monitor grant opportunities for implementing transportation projects and programs, develop its own grant applications, and support LPAs.
5. Technical assistance. GRPC will assist LPAs with various transportation related tasks.
6. List of qualified consultants. GRPC's list of qualified consultants will be evaluated to select consultants for transportation planning. Committees and selection criteria will be used.
7. Planning and Environmental Linkages (PEL) study support. (Planning Emphasis Area: PEL) Support for studies such as the Biloxi Beach Connector, the Fort Bayou Interchange and Connector.
8. GRPC project development. Develop projects from previously completed GRPC planning. GRPC will use prioritization methods to decide which projects to pursue. Selection criteria will include but are not limited to right-of-way availability and equity considerations.

Deliverables

Procurement for GRPC consultants, contract administration, project development

Projected Cost

Task	PL funds	Local match	PL TOTAL	FTA-flex	MDOT match	FTA TOTAL
A-3	\$64,247	\$16,062	\$80,309	\$64,247	\$16,062	\$80,309

B.1 MPO PLANNING

Responsible Party and Contact Information:

Name/Title: Kenneth Yarrow, Executive Director
Telephone Number: 228-864-1167
Email: kyarrow@grpc.com

Purpose and Scope:

This section contains activities related to transportation planning. Consultants may be used for various tasks.

Accomplishments during the Previous Work Program Period:

The Gulf Coast Vision Zero Action Plan was updated to meet the requirements of the SS4A grant program.

Planned Activities for this Work Program:

1. Performance and asset management. (Planning Emphasis Area: Data in Transportation Planning) GRPC will continue to use performance measures to guide the transportation planning process. Strategies and measures will be reported using GRPC Analysis Reports. GRPC will monitor federal performance measures and GRPC performance measures to show advancements in reaching stated goals. GRPC will continue to develop additional performance measures in support of the GRPC planning goals and strategies from the GRPC's Performance and Asset Management Program. GRPC Analysis Reports will be completed based on the Performance and Asset Management Program..
 2. Vision Zero Action Plan updates. (Planning Emphasis Area: Complete Streets). The Gulf Coast Vision Zero Action Plan was completed in FY 2023. The Plan analyzed existing conditions and historical trends of crashes involving fatalities and serious injuries across the Gulf Coast. The Plan addresses intersections, lane departures, and bicycle and pedestrian concerns. The Plan will be updated as new data becomes available and will support the Safe Streets and Road For All (SS4A) Grant Program's applications for the Gulf Coast communities. GRPC staff or consultants will be used to accomplish this task.
 3. Intersection traffic flow. Improve traffic flow by identifying intersections in need of improved operations. Consider innovative design changes such as roundabouts.
 4. Speed Management Program. (Planning Emphasis Area: Data in Transportation Planning) Address aggressive driving by implementing speed management strategies. Recommendations will be made based on engineering studies to carry out speed management strategies such as road design changes, setting appropriate speed limits, and strategically using speed safety cameras. GRPC staff or consultants will be used to accomplish this task.
 5. Regional Freight Mobility Study. Identify and address freight impediments to the network, such as traffic delay, roadway geometric challenges, bridge condition, bridge clearance, crash rates, rail crossing safety, road weight class, and pavement conditions. GRPC staff or consultants will be used to accomplish this task.
-

6. Critical linkages planning. Identify critical linkages in the Gulf Coast transportation system to improve travel. Frontage roads will be used near the interstate to reduce the need for trips taken on I-10.
7. Regional resilience planning. Hurricane evacuation routes and roads accessing shelters will be examined to identify existing and potential impediments to mobility. Opportunities for transportation redundancy will be identified. GRPC staff or consultants will be used to accomplish this task.
8. 2050 Long-Range Transportation Plan. (Planning Emphasis Area: Data in Transportation Planning) GRPC will begin work on the 2050 LRTP. The planning effort will not be completed during the FY 2023 and FY 2024 UPWP, but meetings and preparation will begin.
9. GRPC Transportation Analysis Reports. Planning summary reports from GRPC planning.
10. Pedestrian and bike plan. (Planning Emphasis Area: Complete Streets) This study will evaluate existing conditions in and around many pedestrian hot spots on the Gulf Coast. GRPC staff or consultants will be used to accomplish this task.
 - Recommendations will be made to improve conditions for safe crossings. Mitigation measures, including accessible public transportation stops, safe and accommodating crossing options, median islands, curb extensions, narrower travel lanes, crosswalk striping, pedestrian signals, closing network gaps, and ADA considerations, will improve the safety of both walking tourists and locals.
 - Transform US 90 and other mobility corridors into a Complete Street with infrastructure to improve safety for non-motorized users.
 - Mapping and data collection to identify suitable facilities for bicycles and pedestrians.
11. Roadway lighting management plan. Streetlight planning, design, construction, and maintenance responsibilities are split between MDOT, cities, and counties. This Plan would develop a comprehensive streetlight capital improvement plan for each LPA that includes the inventory of existing lighting, replacement of incandescent lighting, repair of existing street lights, and the installation of new lighting in areas without suitable lighting. Consultants may be used for this task.
12. Gulf Coast Crash Data Annual Report (*Data in Transportation Planning*) Crash data will be analyzed and reported on for data such as urban vs. rural fatalities, crash type fatalities, fatalities by the posted speed limit, daytime vs. nighttime fatalities, intersection vs non-intersection fatalities, cost of crashes (BCA Guidance – US DOT).

Deliverables - GRPC Analysis Reports

Projected Cost

Task	PL funds	Local match	PL TOTAL	FTA-flex	MDOT match	FTA TOTAL
B-1	\$178,358	\$44,589	\$222,947	\$0	\$0	\$0

B.2 TRANSIT PLANNING PROGRAM

Responsible Party and Contact Information:

Name/Title: Kenneth Yarrow, Executive Director
Telephone Number: 228-864-1167
Email: kyarrow@grpc.com

Purpose and Scope:

Provide transit planning assistance to Coast Transit Authority. Consultants may be used for various tasks.

Accomplishments during the Previous Work Program Period:

Service review plans, fare increase public review, and Transit Stops Access Plan.

Planned Activities for this Work Program:

- FY 2026 NTD Survey Process
MPO staff will conduct the FY 2026 NTD Sampling process for the fixed route and demand response systems. Final data analyses and reports will be submitted to CTA.
- Plan updates. (Planning Emphasis: *Equity and Justice40 in Transportation Planning*) GRPC will work with CTA on updates to various plans required by FTA, including the Coordinated Transportation Plan, Title VI plan, CTA's Public Transportation Agency Safety Plan, and Asset Management Plan.
- Public review. (Planning Emphasis: Public Involvement) Perform equity analyses and public review for major changes proposed to the system. GRPC will work with CTA on all required public review and outreach efforts
- Transit service review. (Planning Emphasis Area: Data in Transportation Planning) Service review which takes place as needed, provides for a general evaluation of all transit services considering changes in the local environment (funding, population, development). The task identifies new transit services or significant changes to existing services for the following year. The task identifies changes that are designed to achieve specific service goals and opportunities for service expansion and improvement. GRPC will work with CTA on a plan to establish a 30-minute/60-minute system. This Plan consists of formalizing stop locations, eliminating the hail system, implementing transit signal preemption, and route adjustments. Microtransit services will be considered to supplement fixed-route services. The evaluation process guidelines considered will include but are not limited to:

Deliverables

Service review plans, impact analyses, NTD survey

Projected Cost

Task	PL funds	Local match	PL TOTAL	FTA-flex	MDOT match	FTA TOTAL
B-2	\$0	\$0	\$0	\$293,674	\$73,418	\$367,092

C.1 PLANNING TOOLS AND DATA DEVELOPMENT

Responsible Party and Contact Information:

Name/Title: Kenneth Yarrow, Executive Director
Telephone Number: 228-864-1167
Email: kyarrow@grpc.com

Purpose and Scope:

This section contains activities needed to maintain data used in MPO planning and project development.

Accomplishments during the Previous Work Program Period:

CTA mapping support, land use data, mapping support, GIS support, street centerline file, modeling support.

Planned Activities for this Work Program:

1. GIS support. (Planning Emphasis Area: Data Utilization in Planning) GIS staff will provide support to the transportation planning process through activities such as the development of data related to the 2020 census, maintaining demographic data, mapping of planned and programmed transportation projects and services, and updating and developing new GIS data layers. GRPC provides GIS support to MPO members. GRPC provides mapping support to CTA, including updates to their rider's guide.
2. MPO modeling activities. (Planning Emphasis Area: Data Utilization in Planning) GRPC will perform transportation modeling activities to forecast future demand on the Region's transportation system. This includes GRPC planning, local project traffic forecasts for LPAs, and transportation needs assessments.
3. Stormwater inventory. (Planning Emphasis Area: Data Utilization in Planning) Staff will continually map locations on roadways that experience stormwater inundation. This inventory is used by transportation planners to address stormwater issues on roadways throughout the Region.
4. Gulf Coast street centerline. Maintain GIS coverage of centerline streets and roadway classifications.
5. MPO member maps. GRPC will utilize in-house mapping programs, GIS data, and the Agency's plotter to develop maps for MPO member cities and counties for display as they see fit.
6. Land use GIS updates. GRPC will maintain GIS files for land uses such as apartments, schools, recreation, major employers, etc. These files will support GRPC planning tasks.

Deliverables

Street centerline file, CTA maps, GIS data files

Projected Cost

Task	PL funds	Local match	PL TOTAL	FTA-flex	MDOT match	FTA TOTAL
C-1	\$48,104	\$12,026	\$60,130	\$48,104	\$12,026	\$60,130

D.1 TRAFFIC DATA COLLECTION PROGRAM

Responsible Party and Contact Information:

Name/Title: Ryan Frazier, Traffic Data Technician
Telephone Number: 228-864-1167
Email: rfrazier@grpc.com

Purpose and Scope:

Provide a traffic counting program to meet MDOT requirements and Local Public Agency needs.

Accomplishments during the Previous Work Program Period:

2021 and 2022 traffic counting program, 2019 AADTs

Planned Activities for this Work Program:

1. Traffic count program. (Planning Emphasis Area: Data in Transportation Planning) Perform traffic volume counts according to an annual and monthly schedule. The schedule will be determined on an alternating cycle between 1 and 3 years. Submit raw numbers to MDOT.
2. Quality control. Download and review traffic counts to determine accuracy. Maintain a spreadsheet reflecting historical and current data for all traffic data locations. Reschedule counts if needed.
3. Equipment. Maintain equipment and traffic count van. Research and purchase new equipment to advance the capabilities of the traffic count program. Miovision Scout equipment will provide much needed turning movement counts, pedestrian counts, and vehicle class counts.
4. Annual Average Daily Traffic (AADT) Coordinate with MDOT on AADT development. Update the AADT on an annual basis in the aforementioned spreadsheet.
5. Website. (Planning Emphasis Area: Public Involvement) Place traffic counts on the GRPC website.
6. Special counts. Perform special volume, speed, and classification counts as well as turning count movements and travel time studies as needed to support needs in the Region.
7. Speed surveys. Take regular speed counts on functionally classified roadways. This will be coordinated through the scheduled volume counts. Radar equipment will be purchased to help with this effort. This data will be used in the GRPC Speed Management Program.

Deliverables – 2025 & 2026 traffic counts

Projected Cost

Task	SPR funds	MDOT match	TOTAL
D-1	\$240,000	\$60,000	\$300,000

E.1, E.2 SPECIAL PROJECTS, SUPPORT, AND DEVELOPMENT

Responsible Party and Contact Information:

Name/Title: Kenneth Yarrow, Executive Director
Telephone Number: 228-864-1167
Email: kyarrow@grpc.com

Purpose and Scope:

Development of MPO projects, outreach, and studies. Consultants will be used for various tasks.

Accomplishments during the Previous Work Program Period:

West Wortham Road study, Kapalama Study, DIBerville High Sidewalks, Pass Road Sidewalks, Pass Christian Sidewalk Plan, website updates.

Planned Activities for this Work Program:

1. Staff travel. Staff travel expenses for workshops, statewide MPO meetings, and training.
 2. Memberships. Staff membership fees for planning and engineering organizations.
 3. Technical support. Consultants will be used to maintain and update office IT infrastructure, including server, phone systems, employee workstations, and software packages.
 4. Local plans. GRPC may provide the resources necessary for Local Public Agencies to perform Apartment Survey, Comprehensive Plans, ADA Transition Plans, and Health Impact Analyses. Consultants may be used for this task. Retroreflectivity of a sign is measured with a handheld or mobile retroreflectometer and directly compared to the minimum level appropriate for that sign. GRPC may purchase this tool and provide services to local public agencies. Consultants may be used for this task.
 5. Transportation Planning. Consultants may be used to accomplish some of the planning tasks identified in B-1.
 6. Translation services. The use of services to translate GRPC documents.
 7. MPO expense. Costs associated with food, rentals, speakers, advertisements, and other materials for the MPO planning program, meetings, and training. Office supplies, computer, and printer expenses.
 8. Project support tools. GRPC may purchase or subscribe to programs such as Grammarly, GIS, desktop publishing, email marketing, and virtual meeting platforms for project support. Spanish and Vietnamese translation services for GRPC planning documents. Deaf interpretive services as required.
 9. GRPC technical studies. GRPC will use consultants for small studies. Studies may include traffic circulation studies, traffic impact analyses, intersection studies, traffic studies, conceptual engineering, and roadway safety audits. This is an effort to develop more ready projects for implementation. These studies may be done for MPO members or to support GRPC project development. Pre-construction activities for projects and strategies will be undertaken and then implemented.
-

10. GRPC technical studies – SATO (E-2). (Planning Emphasis: Complete Streets) GRPC will use consultants for small studies for conceptual engineering, and roadway safety audits for bicycle and pedestrian projects. This is an effort to develop more ready projects for implementation. These studies may be done for MPO members or to support GRPC project development. Pre-construction activities for projects and strategies will be undertaken and then implemented.
11. Data purchase. Transportation data may be purchased from various sources. Data such as turning movements, hard stopping, origination-destination, etc. will support transportation planning.
12. MPO promotion. Consultants will maintain and update the website, social media, and develop promotional campaigns to disseminate information and reach the public and stakeholders. Subscription services may be used to provide enhanced public outreach. This may include a virtual meeting platform.

Deliverables

Traffic studies, planning studies, conceptual engineering, GRPC website, etc.

Projected Cost

Task	PL funds	Local match	PL TOTAL	FTA-flex	MDOT match	FTA TOTAL
E-1	\$2,334,267	\$583,567	\$2,917,834	\$411,181	\$102,795	\$513,976

Item	PL-SATO	Local	Total SATO
E-2	\$65,548	\$0	\$65,548

APPENDIX

Schedule for tasks and products	FY 2025				FY 2026			
	Qtr1	Qtr2	Qtr3	Qtr4	Qtr1	Qtr2	Qtr3	Qtr4
A-1 MPO Administration								
Program administration	X	X	X	X	X	X	X	X
Professional development	X	X	X	X	X	X	X	X
Unified Planning Work Program	X	X	X	X	X	X	X	X
MPO meetings	X	X	X	X	X	X	X	X
Community meetings	X	X	X	X	X	X	X	X
Public participation	X	X	X	X	X	X	X	X
MPO newsletter	X	X	X	X	X	X	X	X
Social media	X	X	X	X	X	X	X	X
Environmental Justice & Title VI program	X	X	X	X	X	X	X	X
Department of Defense coordination	X	X	X	X	X	X	X	X
A-2 Transportation Improvement Program								
TIP document	X	X	X	X	X	X	X	X
TIP project tracking	X	X	X	X	X	X	X	X
2026 call for projects				X	X	X	X	X
Public Outreach	X	X	X	X	X	X	X	X
List of obligated projects	X	X	X	X	X	X	X	X
A-3 Project Administration								
Contract administration	X	X	X	X	X	X	X	X
GRPC as LPA	X	X	X	X	X	X	X	X
Project Liaison	X	X	X	X	X	X	X	X
Grant writing	X	X	X	X	X	X	X	X
Technical assistance	X	X	X	X	X	X	X	X
List of qualified consultants	X	X						
PEL study support								
GRPC project development	X	X	X	X	X	X	X	X
B-1 MPO Planning								
Performance and asset management	X	X	X	X	X	X	X	X
Vision Zero Action Plan updates	X	X	X	X	X	X	X	X
Speed management program	X	X	X	X	X	X	X	X
Regional freight mobility study	X	X	X	X	X	X	X	X
Critical linkages planning	X	X	X	X	X	X	X	X
Regional resilience planning	X	X	X	X	X	X	X	X
2050 Long Range Transportation Plan	X	X	X	X	X	X	X	X
GRPC transportation analysis reports	X	X	X	X	X	X	X	X
Pedestrian and bike plan	X	X	X	X	X	X	X	X
Roadway lighting management plan	X	X	X	X	X	X	X	X
Gulf Coast Crash Data Report	X	X	X	X	X	X	X	X
B-2 Transit Planning Program								

FY 2026 NTD Survey Process	X	X	X	X	X	X	X	X
Plan updates	X	X	X	X	X	X	X	X
Public review	X	X	X	X	X	X	X	X
Transit service review		X				X		
C-1 Planning Tools and Data Development								
GIS support	X	X	X	X	X	X	X	X
MPO modeling activities	X	X	X	X	X	X	X	X
Stormwater inventory	X	X	X	X	X	X	X	X
Gulf Coast street centerline	X	X	X	X	X	X	X	X
Land use GIS updates	X	X	X	X	X	X	X	X
D-1 Traffic Count Program								
Traffic count program	X	X	X	X	X	X	X	X
Quality control	X	X	X	X	X	X	X	X
Equipment	X	X	X	X	X	X	X	X
Annual Average Daily Traffic	X	X	X	X	X	X	X	X
Website	X	X	X	X	X	X	X	X
Special counts	X	X	X	X	X	X	X	X
Speed surveys	X	X	X	X	X	X	X	X
E-1 Special Projects, Support, and Develop								
Staff Travel	X	X	X	X	X	X	X	X
Memberships	X	X	X	X	X	X	X	X
Technical support	X	X	X	X	X	X	X	X
Local plans	X	X	X	X	X	X	X	X
Transportation planning	X	X	X	X	X	X	X	X
Translation services	X	X	X	X	X	X	X	X
MPO expense	X	X	X	X	X	X	X	X
Project support tools	X	X	X	X	X	X	X	X
GRPC technical studies	X	X	X	X	X	X	X	X
GRPC technical studies – SATO (E-2)	X	X	X	X	X	X	X	X
Data purchase			X	X	X			
MPO promotion			X	X	X			



**Gulf Coast Metropolitan Planning Organization (MPO) Resolution approving the
FY 2025 – FY 2026 Unified Planning Work Program (UPWP)**

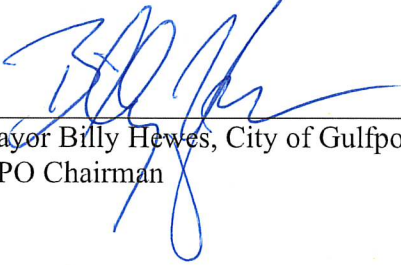
Whereas the Gulf Regional Planning Commission (GRPC) is the designated Metropolitan Planning Organization (MPO) for the Gulfport, MS and Pascagoula, MS urbanized areas;

Whereas the MPO is required by 23 CFR 450.308 to develop a Unified Planning Work Program (UPWP).

Whereas a UPWP is a biennial statement of work identifying the planning priorities and activities to be carried out within a metropolitan planning area. At a minimum, a UPWP includes a description of the planning work and resulting products, who will perform the work, time frames for completing the work, the cost of the work, and the source(s) of funds;

Whereas GRPC carried out a poll vote of the MPO requesting approval of the FY 2025 – FY 2026 UPWP; and now, therefore, be it

Resolved, that on August 13, 2024, the Gulf Coast Metropolitan Planning Organization approved the FY 2025 – FY 2026 UPWP.



Mayor Billy Hewes, City of Gulfport
MPO Chairman