

MPO PRIORITY: EQUITY

TITLE VI

The Gulf Coast Metropolitan Planning Organizations must provide a plan for identifying Underserved Communities using the guidance in Title VI and Executive Order 12898.

■ Title VI, which states that “no person in the United States shall, on the ground of race, color, or national origin, be excluded from participation in, be denied the benefits of, or be subjected to discrimination under any program or activity receiving federal financial assistance,”

ENGAGEMENT

Target communities are geographic areas of analysis that MPOs construct to identify populations that (1) are more likely to face negative consequences from infrastructure development and/or (2) are less likely to have equitable access to transportation services. According to suggested guidance from the US Department of Transportation, the process for identifying and addressing communities across MPOs includes the following steps:

- Creating a demographic profile of low-income residents and people of color.
- Documenting the level of community engagement.
- Conducting the analysis and subsequent mapping.
- Determining disproportionate/adverse impact on low-income residents and people of color.
- If impacts are present, demonstrating how suggested plans, programs, and projects can mitigate them.

GRPC Mission

Provide a planning process that identifies, develops, and promotes projects and programs that contribute toward a safe, efficient, and resilient Mississippi Gulf Coast transportation system.

OBJECTIVE

Provide equity in transportation planning.

STRATEGY

Advance support for all communities.

MEASURE

Provide MPO resources to all communities.

GULF COAST
EQUITY
ANALYSIS

Percent of the total number of MPO bicycle and pedestrian projects from the FY2025-2028 TIP located in target communities.

67%

Percent of MPO bicycle and pedestrian funding from the FY 2025-2028 TIP located in target communities.

66%

Percent of the total number of MPO intersection projects from the FY 2025-2028 TIP located in target communities.

79%

Percent of MPO intersection project funding from the FY 2025-2028 TIP located in target communities.

52%

Percent of total number of MPO projects from the FY 2025-2028 TIP located in target communities.

70%

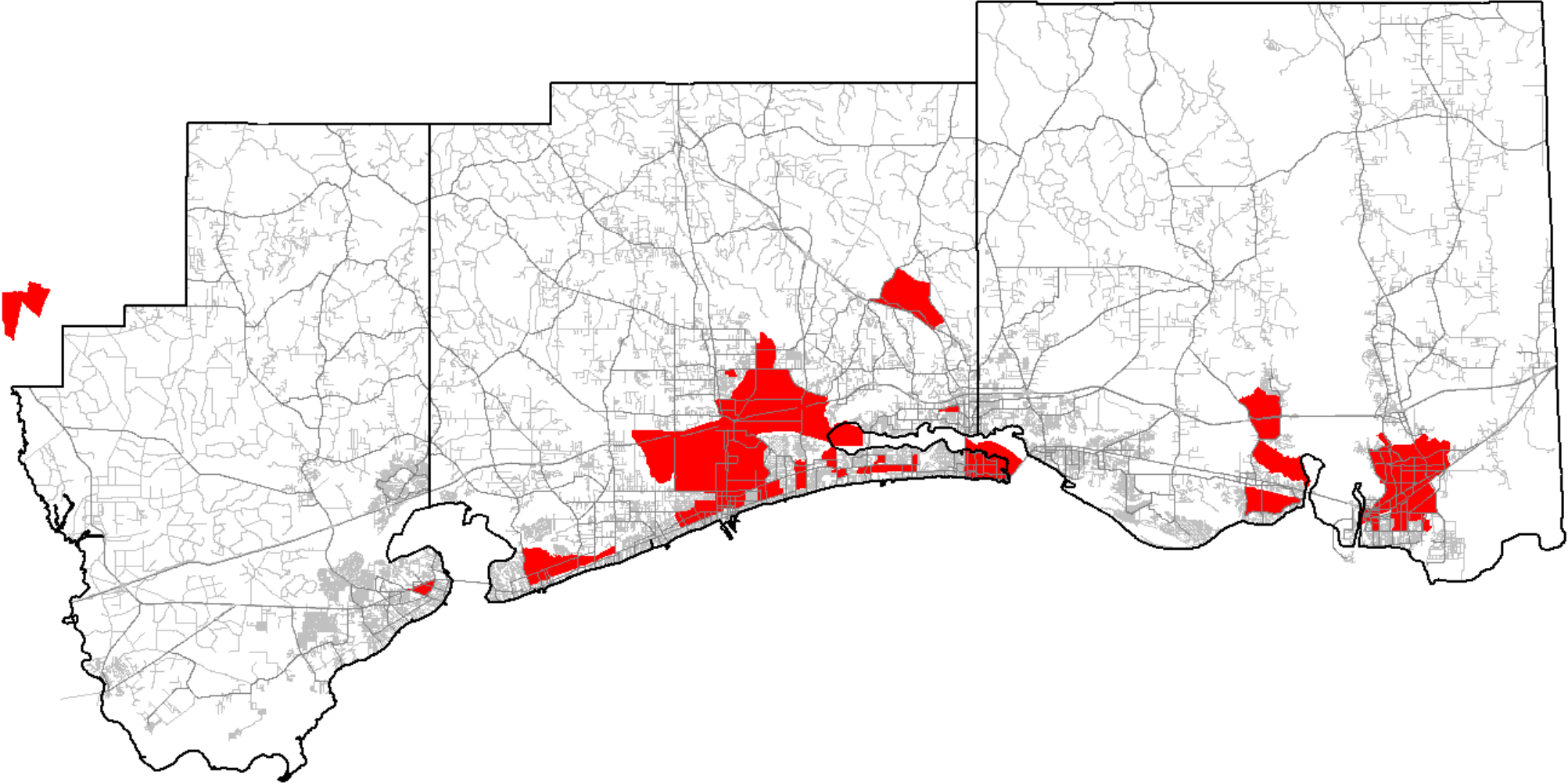
Percent of total MPO project funding from the FY 2025-2028 TIP located in target communities.

56%

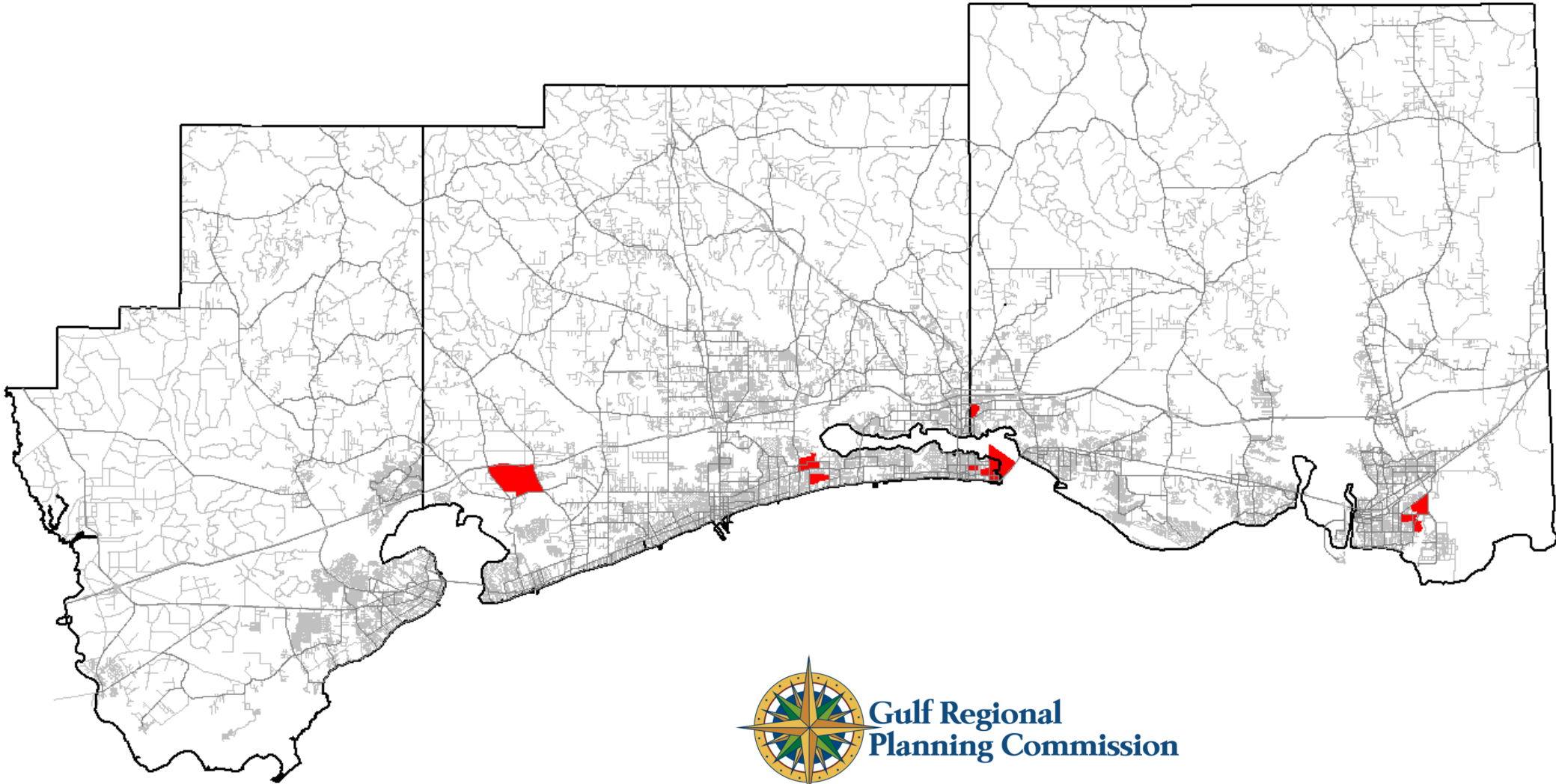
FY 2025-2028 TIP

The TIP is a document that provides a list of projects to be initiated within a four-year period. The TIP only includes projects for which funding has been identified or anticipated.

GULF COAST—MINORITY



GULF COAST—LIMITED ENGLISH PROFICIENCY



**Gulf Regional
Planning Commission**

GULF COAST—LOW INCOME

